

# Storm<sup>®</sup>

herbicide

ACCEPTED  
JUL 1 1995  
Under the Federal Insecticide, Fungicide, and Rodenticide Act, as amended, for the pesticide registered under EPA Reg. No. 7969-76

## Tank mix with Poast<sup>®</sup> herbicide for postemergence use in soybeans

EPA Reg. No 7969-76

All applicable directions, restrictions, precautions and Conditions of Sale and Warranty on the EPA-registered label are to be followed. This labeling must be in the possession of the user at the time of herbicide application.

### Directions For Use

It is a violation of federal law to use this product in a manner inconsistent with its labeling. Do not apply this product in a way that will contact workers or other persons, either directly or through drift. Only protected handlers may be in the area during application. For any requirements specific to your State or Tribe, consult the agency responsible for pesticide regulation.

### General Information

A tank mix of **Poast** and **Storm** is intended for the early postemergence control of a wide spectrum of broadleaf weeds and annual grasses in soybeans (See **Table 1**).

#### General Use Area

Use only in the following states: AL, AR, DE, GA, IL, IN, KS, KY, LA, MD, MI, MO, MS, NC, NM, OH, OK, SC, TN, TX, VA, and WI.

#### Storage and Disposal

Keep from freezing. Store above 32°F.

Do not contaminate water, food or feed by storage or disposal.

Pesticide wastes are acutely hazardous. Improper disposal of excess pesticide, spray mixture, or rinsate is a violation of federal law.

If these wastes cannot be disposed of by use according to label instructions, contact your State Pesticide or Environmental Control Agency, or the Hazardous Waste representative at the nearest EPA Regional Office for guidance.

Triple rinse container (or equivalent). Then offer for recycling or reconditioning, or puncture and dispose of in a sanitary landfill, or by incineration, or if allowed by state and local authorities, by burning. If burned, stay out of smoke.

### In Case of Emergency

In case of large-scale spillage regarding this product, call:

CHEMTREC 800-424-9300

BASF Corporation 800-832-HELP

In case of medical emergency regarding this product, call:

1. Your local doctor for immediate treatment
2. Your local poison control center (hospital)
3. BASF Corporation 800-832-HELP

### Mode of Action:

A tank mix of **Poast** and **Storm** is effective through postemergence contact and systemic activity. Weeds must be thoroughly covered with spray. Large crop-and-weed-leaf canopies shelter smaller weeds and prevent adequate spray coverage.

### Crop Tolerance:

All soybean varieties are tolerant to **Poast** and **Storm** at all stages of growth. Leaf speckling may occur but plants generally outgrow this condition within 10 days.

### Cultivation:

Do not cultivate before or during application or within five days after application of **Poast** and **Storm**. Cultivation may put weeds under stress and reduce control obtained. A timely cultivation 5-7 days after applying **Poast** and **Storm** may assist weed control in soybeans grown in rows more than 10 inches apart.

### Prodigy System<sup>™</sup>

**Poast** and **Storm** is supplied in the **Prodigy System**, a unique, 120-gallon mini-bulk closed delivery system. It consists of a self-discharging tank that does not require any pumping mechanism, and has a dry lock connector which protects the user from exposure to tank contents.

Do not refill **Prodigy System**.

Return **Prodigy System** to BASF for cleaning and refilling.

**Poast** and **Storm** in a dedicated, returnable **Prodigy System** can only be used with the closed **Prodigy System** in which it comes packaged.

The **Prodigy System**, when operated according to directions, will discharge **Poast** and **Storm** in a 1:1 ratio. See **Prodigy System Operating Procedure** below.

## Prodigy System Operating Procedure

- 1) Install a male dry lock connector to the spray tank.
- 2) Connect the female dry lock connector (at the end of the hose attached to the tank) with the male dry lock connector installed on the spray tank.
- 3) Turn on the nitrogen gas supply.
- 4) Set measuring meter to zero.
- 5) Turn on the tank manifold until the desired amount of product, as indicated on the measuring meter, has been discharged into the spray tank.
- 6) Turn off the tank manifold to stop the discharge of product into the sprayer tank.
- 7) Disconnect the female dry lock connector on the tank hose from the male dry lock connector on the spray tank.
- 8) Turn off the nitrogen gas supply when the **Prodigy System™** is empty, operation is completed or tank is ready to be returned to the point of purchase.

### Application Rate and Timing

Apply **Poast** and **Storm** at the rate of 1.5 pints each per acre at early postemergence when weeds are small and actively growing (generally when soybeans are in the 2nd to 3rd trifoliate leaf stage of growth). When using the **Prodigy System**, after **Poast** and **Storm** have been added to the spray tank, add the oil concentrate at a rate of 1 pint per

acre. Maintain constant agitation during application. Under excessively dry, wet, or cold conditions, which may reduce herbicidal activity, add oil concentrate at the rate of 2 pints per acre.

### Rhizome Johnsongrass

Rhizome johnsongrass is best controlled when **Poast** and **Storm** is followed by **Poast Plus®** herbicide when johnsongrass is 6-8 inches tall. The timing of **Poast** and **Storm** should follow label directions for control of the annual grasses and broadleaf weeds. This timing will usually not be optimum for controlling rhizome johnsongrass, however, the **Poast** and **Storm** will provide effective control of the johnsongrass vegetation and some rhizomes.

The sequential application of **Poast Plus** (1.5 pints per acre) will control the newly emerging vegetation as well as deplete the rhizome reserves when the following rates are used:

**Poast and Storm:** 3.0 pints per acre based on the annual grass labelled directions.

**Poast Plus:** 1.5 pints per acre on 6-8" rhizome johnsongrass

Use 2 pints of oil concentrate per acre in each spray mix

### Yellow Nutsedge

At the optimum application time of **Poast** and **Storm** for most pests, yellow nutsedge may not be at the correct growth stage for optimum control. The best nutsedge control

will be achieved by applying **Poast** and **Storm** and a sequential application of **Basagran** at 1.5-2.0 pints per acre.

For optimum results with **Poast** and **Storm** in a total postemergence, one-pass weed control system for soybeans, the following recommendations should be followed:

- plant rows 15" wide or less
- eliminate all vegetative weed growth prior to soybean planting
- apply a tank mix of **Poast** and **Storm** according to weed sizes stated on this label (about 21 days after soybean planting).

### Ground Application

Use a minimum of 10-20 gallons of water per broadcast acre at a minimum of 40 psi pressure (measured at the boom, not at the pump or in the line) to ensure adequate spray coverage. Use standard high pressure pesticide hollow cone or flat fan nozzles spaced 18-20 inches apart. Do not use flood, whirl chamber, or controlled droplet applicator nozzles.

### Aerial Application

Use a minimum of 5 gallons of water per acre and a maximum of 40 psi pressure. To obtain uniform coverage and to avoid drift hazards, the following application equipment and practices should be used:

**Nozzle Type:** Use only diaphragm-type nozzles producing cone or fan spray patterns.

**Table 1: Maximum Weed Heights Controlled by Tank Mixing Storm (1.5 pints per acre) and Poast (1.5 pints per acre) with Crop Oil Concentrate (1 pint per acre)**

Broadleaves*	Maximum Weed Height	Grasses*	Maximum Weed Height
Bristly Starbur	3"	Barnyardgrass	4"
Carpetweed	2"	Broadleaf Signalgrass	4"
Cocklebur	6"	Crabgrass, Large	4"
Common Lambsquarters <sup>b</sup>	2"	Crabgrass, Smooth	4"
Common Ragweed	3"	Foxtail, Giant	4"
Crotalaria	6"	Foxtail, Green	4"
Croton, Tropic	<2"	Foxtail, Yellow	4"
, Woolly	<2"	Goosegrass	4"
Eclipta	2"	Johnsongrass (seedling)	4"
Giant Ragweed	6"	Junglegrass	4"
Jimsonweed	6"	Panicum, Browntop	4"
Ladysthumb	6"	Panicum, Fall	4"
Morningglories	2"	Panicum, Texas	4"
Nightshade, Black	2"	Red Sprangletop	4"
Pigweed, Redroot	2"	Witchgrass	4"
, Smooth	3"	Woolly Cupgrass	4"
Prickly Sida/Teaweed <sup>b</sup>	2"		
Redweed	3"		
Sesbania	6"		
Smartweed, Pennsylvania	4"		
Spurred Anoda <sup>b</sup>	2"		
Texasweed	3"		
Velvetleaf <sup>b</sup>	2"		
Vernice Mallow	2"		
Wild Mustard	4"		
		<b>Perennials:</b> (top growth suppression)	<b>Maximum Weed Height</b>
		Johnsongrass (Rhizome)	Based on application timing of annual grasses
		Yellow Nutsedge	

\* For new germination or perennial regrowth, follow up no sooner than 15 days later with **Basagran®** herbicide, **Poast Plus®** herbicide, **Storm®** herbicide, or **Blazer®** herbicide. Refer to the respective labels for **Directions For Use**.

<sup>b</sup> Control may be inconsistent. A later application of **Basagran** may be necessary. (See **Basagran** label.)

**BEST AVAILABLE COPY**

**Nozzle Height:** 6-10 feet above crop.

**Nozzle Orientation:** Nozzles must be oriented so as to discharge straight back with the air stream (opposite the direction of travel of the aircraft) and not more than 20° downwind.

Nozzles must be located no farther out than  $\frac{3}{4}$  the distance from the center of the aircraft to the end of the wing or rotor.

Do not apply **Poast** and **Storm** by aircraft when wind is blowing at a velocity above 10 mph. Coarse sprays (larger droplets) are less likely to drift.

Do not apply **Poast** and **Storm** by air if ornamental or sensitive non-target crops such as cotton, sugar beets, sunflowers, or okra are within 200 feet downwind.

Applicator must follow the most restrictive use cautions to avoid drift hazard and must follow labeling as well as applicable state and local regulations and ordinances.

#### **Procedure For Cleaning Spray Equipment**

Clean sprayer thoroughly before and after application of **Poast** and **Storm**, particularly if a herbicide with the potential to injure crops was previously used. Consult the label of the previously used herbicide for cleaning instructions. If no instructions are available, the steps listed below are suggested for thorough cleaning of spray equipment prior to or following application of **Poast** and **Storm**.

**Step 1:** Hose down thoroughly the inside as well as the outside of equipment while filling the spray tank half full of water. Flush by operating sprayer until the system is purged of this rinse water.

**Step 2:** Refill tank with water while adding 1 gallon household ammonia or 1 pint household dishwashing detergent or 1 pound of dishwasher detergent per 100 gallons of water. Or add a commercial sprayer cleaner according to the manufacturer's directions. Operate the pump to circulate the detergent solution through the sprayer system for 5-10 minutes and discharge a small amount of solution through the boom and nozzles. Let the solution stand for 24 hours.

**Step 3:** Flush the detergent solution out of the spray tank through the boom.

**Step 4:** Remove the nozzles and screens and flush the system with two tankfuls of water.

#### **Restrictions and Limitations**

Always read and follow all label directions when using any pesticide alone or in tank mix combinations. The most restrictive label applies when using tank mixes.

Only one application of the tank mix of **Poast** and **Storm** per acre per season should be made.

Do not apply to weeds under stress, such as stress due to lack of moisture, previous herbicide injury, mechanical injury or cold temperatures, as unsatisfactory weed control could result.

Do not apply if rainfall is expected soon after application. Overhead irrigation within 8 hours

Physical incompatibility, reduced weed control, or crop injury may result from mixing **Poast** and **Storm** with other pesticides (fungicides, herbicides, insecticides or miticides) additives or fertilizers not recommended on the label. BASF does not recommend the use of **Poast** and **Storm** in tank mixes other than those listed on BASF labels, supplemental labels, or technical bulletins. Local agricultural authorities may be a source of information when using other BASF recommended combinations.

Do not apply **Poast** and **Storm** to soybeans that show injury, leaf phytotoxicity, and/or plant stunting caused by any other prior herbicide applications because this injury may be enhanced or prolonged.

Do not apply **Poast** and **Storm** through any type of irrigation system.

Do not apply to soybeans within 75 days of harvest.

Do not use treated plants for feed or forage.

Avoid drift to all other crops and non-target areas.

This product cannot be used to formulate or reformulate any other pesticide product.

In case of crop failure, only soybeans or peanuts may be immediately replanted.

**Crop rotation restriction:** Root crops (such as carrots, turnips, sweet potatoes, etc.) must not be planted in field treated with **Poast** and **Storm** for 18 months following treatment.

Do not apply more than 2 pints of **Basagran** or 1 pint of **Blazer** following an application of **Poast** and **Storm**.

Do not apply more than 1.5 pints of **Storm** following an application of **Poast** and **Storm**.

Do not apply sequential applications of **Blazer**, **Basagran**, or **Poast Plus** within 15 days following the application of **Poast** and **Storm**.

After application of **Poast** and **Storm**, do not apply more than 3.5 pints of **Poast** per acre, per season.

Do not use selective application equipment such as recirculating sprayers, wiper applicators, or shielded applicators when applying **Poast** and **Storm**.

**BEST AVAILABLE COPY**

**BEST AVAILABLE COPY**

40430  
**Conditions of Sale and Warranty**  
The **Directions For Use** of this product reflect the opinion of experts based on field use and tests. The directions are believed to be reliable and should be followed carefully. However, it is impossible to eliminate all risks inherently associated with use of this product. Crop injury, ineffectiveness or other unintended consequences may result, because of such factors as weather conditions, presence of other materials, or use of the product in a manner inconsistent with its labeling, all of which are beyond the control of BASF CORPORATION ("BASF") or the Seller. All such risks shall be assumed by the Buyer.

BASF warrants that this product conforms to the chemical description on the label and is reasonably fit for the purposes referred to in the **Directions For Use**, subject to the inherent risks, referred to above.

BASF MAKES NO OTHER EXPRESS OR IMPLIED WARRANTY OF FITNESS OR MERCHANTABILITY OR ANY OTHER EXPRESS OR IMPLIED WARRANTY. IN NO CASE SHALL BASF OR THE SELLER BE LIABLE FOR CONSEQUENTIAL, SPECIAL OR INDIRECT DAMAGES RESULTING FROM THE USE OR HANDLING OF THIS PRODUCT.

BASF and the Seller offer this product, and the Buyer and User accept it, subject to the foregoing

**Conditions of Sale and Warranty** which may be varied only by agreement in writing signed by a duly authorized representative of BASF.

*Storm and Blazer are registered trademarks of BASF Corporation.*

*Basagran and Poast are registered trademarks of BASF AG.*

*Duplex II and Prodigy system are trademarks of BASF Corporation.*

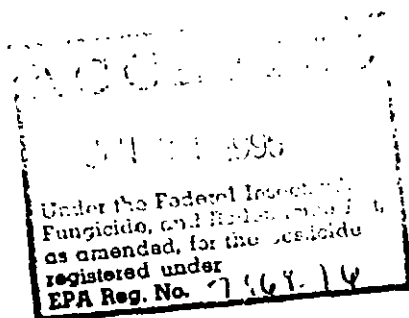
© 1994 BASF Corporation

**BASF Corporation**  
P.O. Box 13528  
Research Triangle Park, NC 27709

**BASF**

**BASF**

50700



# Conclude<sup>TM</sup> B

## herbicide

### Postemergence Herbicide

#### Active Ingredients\*:

Sodium salt of bentazon: sodium (3-isopropyl-1H-2,1,3-benzothiadiazin-4(3H)-one-2,2-dioxide).....	29.2%
Sodium salt of acifluorfen: sodium 5-[2-chloro-4-(trifluoromethyl)phenoxy]-2-nitrobenzoate .....	13.4%
<b>Inert ingredients</b> .....	<b>57.4%</b>
<b>Total</b> .....	<b>100.0%</b>

\*Equivalent to 2.67 pounds per gallon bentazon: 3-isopropyl-(1 H-2,1,3-benzothiadiazin-4-(3H)-one-2,2-dioxide; and 1.33 pounds per gallon of sodium acifluorfen, sodium 5-[2-chloro-4-(trifluoromethyl) phenoxy]-2-nitrobenzoate.

EPA Reg. No. 7969-76.

**KEEP OUT OF REACH OF CHILDREN.**

### DANGER/PELIGRO

Si usted no entiende la etiqueta, busque a alguien para que se la explique a usted en detalle. (If you do not understand the label, find someone to explain it to you in detail.)

### Statement of Practical Treatment

**If in eyes:** Flush with large amounts of water for at least 15 minutes. Get medical attention. **If on skin:** Wash with plenty of soap and water. Consult a physician if irritation persists. **If swallowed:** Call a physician or Poison Control Center. Drink 1 or 2 glasses of water and induce vomiting by touching back of throat with finger. Do not induce vomiting or give anything by mouth to an unconscious person. **Note to physician:** Emesis is recommended.

See inside booklet for complete **Directions For Use** and **Conditions of Sale and Warranty**.

#### Agricultural Use Requirements

Use this product only in accordance with its labeling and with the Worker Protection Standard, 40 CFR part 170. Refer to supplemental labeling under "Agricultural Use Requirements" in the **Directions For Use** for information about this standard.

### Net contents

BASF Corporation  
P.O. Box 13528, Research Triangle Park, NC, 27709

**BEST AVAILABLE COPY**

Specimen Label

### Precautionary Statements Hazards to Humans (And Domestic Animals):

**DANGER.** Causes irreversible eye damage. Harmful if swallowed, inhaled or absorbed through the skin. Do not get in eyes. Avoid breathing vapor or spray mist and contact with skin or clothing. This product may cause an allergic skin response.

### Personal Protective Equipment (PPE)

**Applicators and other handlers must wear:**

- Long-sleeved shirt and long pants
- Waterproof gloves
- Shoes plus socks
- Protective eyewear

Discard clothing and other absorbent materials that have been drenched or heavily contaminated with this product's concentrate. Do not re-use them. Follow manufacturer's instructions for cleaning/maintaining PPE. If no such instructions for washables, use detergent and hot water. Keep and wash PPE separately from other laundry.

### Engineering Controls

**Statement:** When handlers use closed systems, enclosed cabs, or aircraft in a manner that meets the requirements listed in the Worker Protection Standard (WPS) for agricultural pesticides [40 CFR 170.240(d)(4-6)], the handler PPE requirements may be reduced or modified as specified in the WPS.

### User Safety Recommendations User should:

- Wash hands before eating, drinking, chewing gum, using tobacco, or using the toilet.
- Remove clothing immediately if pesticide gets inside. Then wash thoroughly and put on clean clothing.
- Remove PPE immediately after handling this product. Wash the outside of gloves before removing. As soon as possible, wash thoroughly and change into clean clothing.

### Environmental Hazards

For terrestrial uses, do not apply directly to water or to areas where surface water is present or to intertidal areas below the mean high water mark. Do not contaminate water when disposing of equipment wash waters. Do not apply when weather conditions favor drift from target areas.

### Directions For Use — Tank Mix of Conclude B and Conclude G

(Hereafter referred to as **Conclude**) It is a violation of federal law to use this product in a manner inconsistent with its labeling. Do not apply this product in a way that will contact workers or other persons, either directly or through drift. Only protected handlers may be in the area during application. For any requirements specific to your State or Tribe, consult the agency responsible for pesticide regulation.

### Agricultural Use Requirements

Use this product only in accordance with its labeling and with the Worker Protection Standard, 40 CFR part 170. This standard contains requirements for the protection of agricultural workers on farms, forests, nurseries, and greenhouses, and handlers of agricultural pesticides. It contains requirements for training, decontamination, notification, and emergency assistance. It also contains specific instructions and exceptions pertaining to the statements on this label about personal protective equipment (PPE), and restricted entry interval (REI). The requirements in this box only apply to uses of this product that are covered by the Worker Protection Standard.

Do not enter or allow worker entry to treated areas during the REI of 48 hours.

PPE required for early entry to treated areas that is permitted under the Worker Protection Standard and that involves contact with anything that has been treated, such as plants, soil, or water, is:

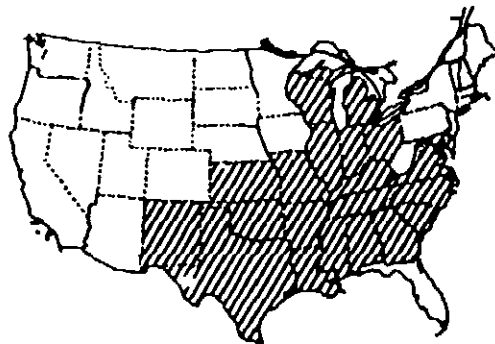
- Coveralls over short-sleeved shirt and short pants
- Chemical-resistant gloves such as barrier laminate or viton  $\geq$  14 mils
- Chemical-resistant footwear plus socks
- Protective eyewear
- Chemical-resistant headgear for overhead exposure

### General Information

**Conclude** is intended for the early postemergence control of a wide spectrum of broadleaf weeds and annual grasses in soybeans (See Table 1).

### General Use Area

Use only in the following states (see map): AL, AR, DE, GA, IL, IN, KS, KY, LA, MD, MI, MO, MS, NC, NM, OH, OK, SC, TN, TX, VA, and WI.



### Storage and Disposal

Keep from freezing. Store above 32°F.

Do not contaminate water, food or feed by storage or disposal.

Pesticide wastes are acutely hazardous. Improper disposal of excess pesticide, spray mixture, or rinsate is a violation of federal law.

If these wastes cannot be disposed of by use according to label instructions, contact your State Pesticide or Environmental Control Agency, or the Hazardous Waste representative at the nearest EPA Regional Office for guidance.

### In Case of Emergency

In case of large-scale spillage regarding this product, call:

CHEMTREC 800-424-9300

BASF Corporation 800-832-HELP

In case of medical emergency regarding this product, call:

1. Your local doctor for immediate treatment

2. Your local poison control center (hospital)

3. BASF Corporation 800-832-HELP

### Mode of Action:

**Conclude** is effective through postemergence contact and systemic activity. Weeds must be thoroughly covered with spray. Large crop-and-weed-leaf canopies shelter smaller weeds and prevent adequate spray coverage.

### Crop Tolerance:

All soybean varieties are tolerant to **Conclude** at all stages of growth. Leaf speckling may occur but plants generally outgrow this condition within 10 days.

**BEST AVAILABLE COPY**

### Cultivation:

Do not cultivate before or during application or within five days after application of **Conclude**. Cultivation may put weeds under stress and reduce control obtained. A timely cultivation 5-7 days after applying **Conclude** may assist weed control in soybeans grown in rows more than 10 inches apart.

### Prodigy System™

**Conclude** is supplied in the **Prodigy System**, a unique, 120-gallon mini-bulk closed delivery system. It consists of a self-discharging tank that does not require any pumping mechanism, and has a dry lock connector which protects the user from exposure to tank contents.

Do not refill **Prodigy System**.

Return **Prodigy System** to BASF for cleaning and refilling.

**Conclude** in a dedicated, returnable **Prodigy System** can only be used with the closed **Prodigy System** in which it comes packaged.

The **Prodigy System**, when operated according to directions, will discharge **Conclude B** and **G** in a 1:1 ratio. See **Prodigy System Operating Procedure** below.

### Prodigy System Operating Procedure

- 1) Install a male dry lock connector to the spray tank.
- 2) Connect the female dry lock connector (at the end of the hose attached to the tank) with the male dry lock connector installed on the spray tank.
- 3) Turn on the nitrogen gas supply.
- 4) Set measuring meter to zero.
- 5) Turn on the tank manifold until the desired amount of product, as indicated on the measuring meter, has been discharged into the spray tank.
- 6) Turn off the tank manifold to stop the discharge of product into the sprayer tank.
- 7) Disconnect the female dry lock connector on the tank hose from the male dry lock connector on the spray tank.
- 8) Turn off the nitrogen gas supply when the **Prodigy System™** is empty, operation is completed or tank is ready to be returned to the point of purchase.

### Application Rate and Timing

Apply **Conclude** at the rate of 3.0 pints per acre at early postemergence when weeds are small and actively growing (generally when soybeans are in the 2nd to 3rd trifoliate leaf stage of growth). After **Conclude** has been added to the spray tank, add the oil concentrate at a rate of 1 pint per acre. Maintain constant agitation during application. Under excessively dry, wet, or cold conditions, which may reduce herbicidal activity, add oil concentrate at the rate of 2 pints per acre.

### Rhizome Johnsongrass

Rhizome johnsongrass is best controlled when **Conclude** is followed by **Poast Plus®** herbicide when johnsongrass is 6-8 inches tall. The timing of **Conclude** should follow label directions for control of the annual grasses and broadleaf weeds. This timing will usually not be optimum for controlling rhizome johnsongrass, however, the **Conclude** will provide effective control of the johnsongrass vegetation and some rhizomes.

The sequential application of **Poast Plus** (1.5 pints per acre) will control the newly emerging vegetation as well as deplete the rhizome reserves when the following rates are used:

**Conclude:** 3.0 pints per acre based on the annual grass labelled directions.

**Poast Plus:** 1.5 pints per acre on 6-8" rhizome johnsongrass  
Use 2 pints of oil concentrate per acre in each spray mix

### Yellow Nutsedge

At the optimum application time of **Conclude** for most pests, yellow nutsedge may not be at the correct growth stage for optimum control. The best nutsedge control will be achieved by applying **Conclude** and a sequential application of **Basagran** at 1.5-2.0 pints per acre.

For optimum results with **Conclude** in a total postemergence, one-pass weed control system for soybeans, the following recommendations should be followed:

- plant rows 15" wide or less
- eliminate all vegetative weed growth prior to soybean planting
- apply **Conclude** according to weed sizes stated on this label (about 21 days after soybean planting).

### Ground Application

Use a minimum of 10-20 gallons of water per broadcast acre at a minimum of 40 psi pressure (measured at the boom, not at the pump or in the line) to ensure adequate spray coverage. Use standard high pressure pesticide hollow cone or flat fan nozzles spaced 18-20 inches apart. Do not use flood, whirl chamber, or controlled droplet applicator nozzles.

### Aerial Application

Use a minimum of 5 gallons of water per acre and a maximum of 40 psi pressure. To obtain uniform coverage and to avoid drift hazards, the following application equipment and practices should be used:

**Nozzle Type:** Use only diaphragm-type nozzles producing cone or fan spray patterns.

**Nozzle Height:** 6-10 feet above crop.

**Nozzle Orientation:** Nozzles must be oriented so as to discharge straight back with the air stream (opposite the direction of travel of the aircraft) and not more than 20° downwind.

Nozzles must be located no farther out than 3/4 the distance from the center of the aircraft to the end of the wing or rotor.

Do not apply **Conclude** by aircraft when wind is blowing at a velocity above 10 mph. Coarse sprays (larger droplets) are less likely to drift.

Do not apply **Conclude** by air if ornamental or sensitive nontarget crops such as cotton, sugar beets, sunflowers, or okra are within 200 feet downwind.

Applicator must follow the most restrictive use cautions to avoid drift hazard and must follow labeling as well as applicable state and local regulations and ordinances.

BEST AVAILABLE COPY

**Table 1. Maximum Weed Heights Controlled by Conclude (3.0 pints per acre) with Crop Oil Concentrate (1 pint per acre)**

Broadleaves*	Maximum Weed Height	Grasses*	Maximum Weed Height
Bristly Starbur	3"	Barnyardgrass	4"
Carpetweed	2"	Broadleaf Signalgrass	4"
Cocklebur	6"	Crabgrass, Large	4"
Common Lambsquarters <sup>a</sup>	2"	Crabgrass, Smooth	4"
Common Ragweed	3"	Foxtail, Giant	4"
Crotalaria	6"	Foxtail, Green	4"
Croton, Tropic	<2"	Foxtail, Yellow	4"
Woolly	<2"	Goosegrass	4"
Eclipta	2"	Johnsongrass (seedling)	4"
Giant Ragweed	6"	Junglegrass	4"
Jimsonweed	6"	Panicum, Browntop	4"
Ladysthumb	6"	Panicum, Fall	4"
Morningglories	2"	Panicum, Texas	4"
Nightshade, Black	2"	Red Sprangletop	4"
Pigweed, Redroot	2"	Witchgrass	4"
Smooth	3"	Woolly Cupgrass	4"
Prickly Sida/Teaweed <sup>a</sup>	2"		
Redweed	3"		
Sesbania	6"		
Smartweed, Pennsylvania	4"		
Spurred Anoda <sup>a</sup>	2"	<b>Perennials:</b>	<b>Maximum</b>
Texasweed <sup>a</sup>	3"	<b>(top growth suppression)</b>	<b>Weed Height</b>
Velvetleaf <sup>a</sup>	2"	Johnsongrass (Rhizome)	Based on application timing of annual grasses
Venice Mallow	2"	Yellow Nutsedge	
Wild Mustard	4"		

\* For new germination or perennial regrowth, follow up no sooner than 15 days later with **Basagran<sup>®</sup> herbicide, Poast<sup>®</sup> herbicide, Storm<sup>®</sup> herbicide, or Blazer<sup>®</sup> herbicide**. Refer to the respective labels for **Directions For Use**.

<sup>a</sup> Control may be inconsistent. A later application of **Basagran** may be necessary. (See **Basagran** label.)

### Procedure For Cleaning Spray Equipment

Clean sprayer thoroughly before and after application of **Conclude**, particularly if a herbicide with the potential to injure crops was previously used. Consult the label of the previously used herbicide for cleaning instructions. If no instructions are available, the steps listed below are suggested for thorough cleaning of spray equipment prior to or following application of **Conclude**.

**Step 1:** Hose down thoroughly the inside as well as the outside of equipment while filling the spray tank half full of water. Flush by operating sprayer until the system is purged of this rinse water.

**Step 2:** Refill tank with water while adding 1 gallon household ammonia or 1 pint household dishwashing detergent or 1 pound of dishwasher detergent per 100 gallons of water. Or add a commercial sprayer cleaner according to the manufacturer's directions. Operate the pump to circulate the detergent solution through the sprayer system for 5-10 minutes and discharge a small amount of solution through the boom and nozzles. Let the solution stand for 24 hours.

**Step 3:** Flush the detergent solution out of the spray tank through the boom.

**Step 4:** Remove the nozzles and screens and flush the system with two tankfuls of water.

**BEST AVAILABLE COPY**



### Restrictions and Limitations

Always read and follow all label directions when using any pesticide alone or in tank mix combinations. The most restrictive label applies when using tank mixes. Only one application of **Conclude** per acre per season should be made.

Do not apply to weeds under stress, such as stress due to lack of moisture, previous herbicide injury, mechanical injury or cold temperatures, as unsatisfactory weed control could result.

Do not apply if rainfall is expected soon after application. Overhead irrigation within 8 hours

Physical incompatibility, reduced weed control, or crop injury may result from mixing **Conclude** with other pesticides (fungicides, herbicides, insecticides or miticides) additives or fertilizers not recommended on the label. BASF does not recommend the use of **Conclude** in tank mixes other than those listed on BASF labels, supplemental labels, or technical bulletins. Local agricultural authorities may be a source of information when using other BASF recommended combinations.

Do not apply **Conclude** to soybeans that show injury, leaf phytotoxicity, and/or plant stunting caused by any other prior herbicide applications because this injury may be enhanced or prolonged.

Do not apply **Conclude** through any type of irrigation system.

Do not apply to soybeans within 75 days of harvest.

Do not use treated plants for feed or forage.

Avoid drift to all other crops and non-target areas.

This product cannot be used to formulate or reformulate any other pesticide product.

In case of crop failure, only soybeans or peanuts may be immediately replanted.

**Crop rotation restriction:** Root crops (such as carrots, turnips, sweet potatoes, etc.) must not be planted in field treated with **Conclude** for 18 months following treatment.

Do not apply more than 2 pints of **Basagran** or 1 pint of **Blazer** following an application of **Conclude**.

Do not apply more than 1.5 pints of **Storm** following an application of **Conclude**.

Do not apply sequential applications of **Blazer**, **Basagran**, or **Poast Plus** within 15 days following the application of **Conclude**.

After application of **Conclude**, do not apply more than 3.5 pints of **Poast** per acre, per season.

Do not use selective application equipment such as recirculating sprayers, wiper applicators, or shielded applicators when applying **Conclude**.

### Conditions of Sale and Warranty

The **Directions For Use** of this product reflect the opinion of experts based on field use and tests. The directions are believed to be reliable and should be followed carefully. However, it is impossible to eliminate all risks inherently associated with use of this product. Crop injury, ineffectiveness or other unintended consequences may result, because of such factors as weather conditions, presence of other materials, or use of the product in a manner inconsistent with its labeling, all of which are beyond the control of BASF CORPORATION ("BASF") or the Seller. All such risks shall be assumed by the Buyer.

BASF warrants that this product conforms to the chemical description on the label and is reasonably fit for the purposes referred to in the **Directions For Use**, subject to the inherent risks, referred to above. BASF MAKES NO OTHER EXPRESS OR IMPLIED WARRANTY OF FITNESS OR MERCHANTABILITY OR ANY OTHER EXPRESS OR IMPLIED WARRANTY. IN NO CASE SHALL BASF OR THE SELLER BE LIABLE FOR CONSEQUENTIAL, SPECIAL OR INDIRECT DAMAGES RESULTING FROM THE USE OR HANDLING OF THIS PRODUCT. BASF and the Seller offer this product, and the Buyer and User accept it, subject to the foregoing **Conditions of Sale and Warranty** which may be varied only by agreement in writing signed by a duly authorized representative of BASF.

*Basagran and Poast are registered trademarks of BASF AG.*

*Conclude B and Conclude G are trademarks of BASF Corporation.*

*Storm, Poast Plus, and Blazer are registered trademarks of BASF Corporation.*

© 1994 BASF Corporation

NVA ...

**BEST AVAILABLE COPY**

**BEST AVAILABLE COPY**

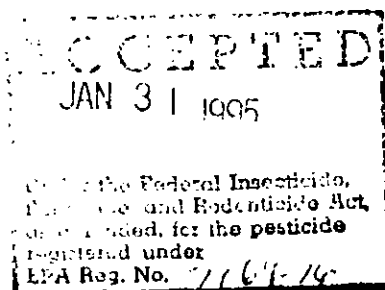
**BASF Corporation**  
P.O. Box 13528  
Research Triangle Park, NC 27709

**BASF**

Agricultural Products

# Storm<sup>®</sup>

herbicide



## Tank mix with Poast<sup>®</sup> herbicide for postemergence use in soybeans

EPA Reg. No 7969-76

All applicable directions, restrictions, precautions and Conditions of Sale and Warranty on the EPA-registered label are to be followed. This labeling must be in the possession of the user at the time of herbicide application.

### Directions For Use

It is a violation of federal law to use this product in a manner inconsistent with its labeling. Do not apply this product in a way that will contact workers or other persons, either directly or through drift. Only protected handlers may be in the area during application. For any requirements specific to your State or Tribe, consult the agency responsible for pesticide regulation.

### General Information

A tank mix of **Poast** and **Storm** is intended for the early postemergence control of a wide spectrum of broadleaf weeds and annual grasses in soybeans. (See Table 1).

### General Use Area

Use only in the following states: AL, AR, DE, GA, IL, IN, KS, KY, LA, MD, MI, MO, MS, NC, NM, OH, OK, SC, TN, TX, VA, and WI.

### Storage and Disposal

Keep from freezing. Store above 32°F.

Do not contaminate water, food or feed by storage or disposal.

Pesticide wastes are acutely hazardous. Improper disposal of excess pesticide, spray mixture, or rinsate is a violation of federal law.

If these wastes cannot be disposed of by use according to label instructions, contact your State Pesticide or Environmental Control Agency, or the Hazardous Waste representative at the nearest EPA Regional Office for guidance.

Triple rinse container (or equivalent). Then offer for recycling or reconditioning, or puncture and dispose of in a sanitary landfill, or by incineration, or if allowed by state and local authorities, by burning. If burned, stay out of smoke.

### In Case of Emergency

In case of large-scale spillage regarding this product, call:

CHEMTREC 800-424-9300  
BASF Corporation 800-832-HELP

In case of medical emergency regarding this product, call:

1. Your local doctor for immediate treatment
2. Your local poison control center (hospital)
3. BASF Corporation 800-832-HELP

### Mode of Action:

A tank mix of **Poast** and **Storm** is effective through postemergence contact and systemic activity. Weeds must be thoroughly covered with spray. Large crop-and-weed-leaf canopies shelter smaller weeds and prevent adequate spray coverage.

### Crop Tolerance:

All soybean varieties are tolerant to **Poast** and **Storm** at all stages of growth. Leaf speckling may occur but plants generally outgrow this condition within 10 days.

### Cultivation:

Do not cultivate before or during application or within five days after application of **Poast** and **Storm**. Cultivation may put weeds under stress and reduce control obtained. A timely cultivation 5-7 days after applying **Poast** and **Storm** may assist weed control in soybeans grown in rows more than 10 inches apart.

### Duplex<sup>™</sup> II System

**Poast** and **Storm** is provided in a molded jug pack that contains enough **Poast** and **Storm** to treat 5 acres.

### Mixing

Fill tank of a thoroughly clean sprayer half to two-thirds full with clean water. Start agitation and add the recommended amounts of product in the following order: **Storm**, oil concentrate, and **Poast**. Then add the remaining quantity of water. Do not attempt to pour the contents of the **Duplex** container system (**Poast** and **Storm**) into the tank simultaneously or poor mixing will result. Maintain constant agitation during application.

### Application Rate and Timing

Apply **Poast** and **Storm** at the rate of 1.5 pints each per acre at early postemergence when weeds are small and actively growing (usually when soybeans are in the 2nd to 3rd trifoliate leaf stage of growth). After **Poast** and **Storm** have been added to the spray tank, add the oil concentrate at a rate of 1 pint per acre. Maintain constant agitation during application. Under excessively dry, wet, or cold conditions, which may reduce herbicidal activity, add oil concentrate at the rate of 2 pints per acre.

### Rhizome Johnsongrass

Rhizome johnsongrass is best controlled when **Poast** and **Storm** is followed by **Poast Plus<sup>®</sup>** herbicide when johnsongrass is 6-8 inches tall. The timing of **Poast** and **Storm** should follow label directions for control of the annual grasses and broadleaf weeds. This timing will usually not be optimum for controlling rhizome johnsongrass, however, the **Poast** and **Storm** will provide effective control of the johnsongrass vegetation and some rhizomes.

BEST AVAILABLE COPY

Agricultural Products

BASF

The sequential application of **Poast Plus** (1.5 pints per acre) will control the newly emerging vegetation as well as deplete the rhizome reserves when the following rates are used:

**Poast and Storm:** 3.0 pints per acre based on the annual grass labelled directions.

**Poast Plus:** 1.5 pints per acre on 6-8" rhizome johnsongrass

Use 2 pints of oil concentrate per acre in each spray mix

#### **Yellow Nutsedge**

At the optimum application time of **Poast and Storm** for most pests, yellow nutsedge may not be at the correct growth stage for optimum control. The best nutsedge control will be achieved by applying **Poast and Storm** and a sequential application of **Basagran** at 1.5-2.0 pints per acre.

For optimum results with **Poast and Storm** in a total postemergence, one-pass weed control system for soybeans, the following recommendations should be followed:

- plant rows 15" wide or less
- eliminate all vegetative weed growth prior to soybean planting
- apply a tank mix of **Poast and Storm** according to weed sizes stated on this label (about 21 days after soybean planting).

#### **Ground Application**

Use a minimum of 10-20 gallons of water per broadcast acre at a minimum of 40 psi pressure (measured at the boom, not at the pump or in the line) to ensure adequate spray coverage. Use standard high pressure pesticide hollow cone or flat fan nozzles spaced 18-20 inches apart. Do not use flood, whirl chamber, or controlled droplet applicator nozzles.

#### **Aerial Application**

Use a minimum of 5 gallons of water per acre and a maximum of 40 psi pressure. To obtain uniform coverage and to avoid drift hazards, the following application equipment and practices should be used:

**Nozzle Type:** Use only diaphragm-type nozzles producing cone or fan spray patterns.

**Nozzle Height:** 6-10 feet above crop.

**Nozzle Orientation:** Nozzles must be oriented so as to discharge straight back with the air stream (opposite the direction of travel of the aircraft) and not more than 20° downwind.

Nozzles must be located no farther out than  $\frac{3}{4}$  the distance from the center of the aircraft to the end of the wing or rotor.

Do not apply **Poast and Storm** by aircraft when wind is blowing at a velocity above 10 mph. Coarse sprays (larger droplets) are less likely to drift.

Do not apply **Poast and Storm** by air if ornamental or sensitive nontarget crops such as cotton, sugar beets sunflowers, or okra are within 200 feet downwind.

Applicator must follow the most restrictive use cautions to avoid drift hazard and must follow labeling as well as applicable state and local regulations and ordinances.

**Table 1: Maximum Weed Heights Controlled by Tank Mixing Storm (1.5 pints per acre) and Poast (1.5 pints per acre) with Crop Oil Concentrate (1 pint per acre)**

Broadleaves*	Maximum Weed Height	Grasses*	Maximum Weed Height
Bristly Starbur	3"	Barnyardgrass	4"
Carpetweed	2"	Broadleaf Signalgrass	4"
Cocklebur	6"	Crabgrass, Large	4"
Common Lambsquarters <sup>b</sup>	2"	Crabgrass, Smooth	4"
Common Ragweed	3"	Foxtail, Giant	4"
Crotalaria	6"	Foxtail, Green	4"
Croton, Tropic	<2"	Foxtail, Yellow	4"
Woolly	<2"	Goosegrass	4"
Eclipta	2"	Johnsongrass (seedling)	4"
Giant Ragweed	6"	Junglegrass	4"
Jimsonweed	6"	Panicum, Browntop	4"
Ladysthumb	6"	Panicum, Fall	4"
Morningglories	2"	Panicum, Texas	4"
Nightshade, Black	2"	Red Sprangletop	4"
Pigweed, Redroot	2"	Witchgrass	4"
Smooth	3"	Woolly Cupgrass	4"
Prickly Sida/Teaweed <sup>b</sup>	2"		
Redweed	3"		
Sesbania	6"		
Smartweed, Pennsylvania	4"		
Spurred Anoda <sup>b</sup>	2"		
Texasweed	3"		
Velvetleaf <sup>b</sup>	2"		
Vernice Mallow	2"		
Wild Mustard	4"		
		<b>Perennials:</b> (top growth suppression)	<b>Maximum Weed Height</b>
		Johnsongrass (Rhizome)	Based on application timing of annual grasses
		Yellow Nutsedge	

\* For new germination or perennial regrowth, follow up no sooner than 15 days later with **Basagran**<sup>®</sup> herbicide, **Poast Plus**<sup>®</sup> herbicide, **Storm**<sup>®</sup> herbicide, or **Blazer**<sup>®</sup> herbicide. Refer to the respective labels for **Directions For Use**.

<sup>b</sup> Control may be inconsistent. A later application of **Basagran** may be necessary. (See **Basagran** label.)

**BEST AVAILABLE COPY**

### Procedure For Cleaning Spray Equipment

Clean sprayer thoroughly before and after application of **Poast** and **Storm**, particularly if a herbicide with the potential to injure crops was previously used. Consult the label of the previously used herbicide for cleaning instructions. If no instructions are available, the steps listed below are suggested for thorough cleaning of spray equipment prior to or following application of **Poast** and **Storm**.

- Step 1:** Hose down thoroughly the inside as well as the outside of equipment while filling the spray tank half full of water. Flush by operating sprayer until the system is purged of this rinse water.
- Step 2:** Refill tank with water while adding 1 gallon household ammonia or 1 pint household dishwashing detergent or 1 pound of dishwasher detergent per 100 gallons of water. Or add a commercial sprayer cleaner according to the manufacturer's directions. Operate the pump to circulate the detergent solution through the sprayer system for 5-10 minutes and discharge a small amount of solution through the boom and nozzles. Let the solution stand for 24 hours.
- Step 3:** Flush the detergent solution out of the spray tank through the boom.
- Step 4:** Remove the nozzles and screens and flush the system with two tankfuls of water.

### Restrictions and Limitations

Always read and follow all label directions when using any pesticide alone or in tank mix combinations. The most restrictive label applies when using tank mixes.

Only one application of the tank mix of **Poast** and **Storm** per acre per season should be made.

Do not apply to weeds under stress, such as stress due to lack of moisture, previous herbicide injury, mechanical injury or cold temperatures, as unsatisfactory weed control could result.

Do not apply if rainfall is expected soon after application. Overhead irrigation within 8 hours

Physical incompatibility, reduced weed control, or crop injury may result from mixing **Poast** and **Storm** with other pesticides (fungicides, herbicides, insecticides or miticides) additives or fertilizers not recommended on the label. BASF does not recommend the use of **Poast** and **Storm** in tank mixes other than those listed on BASF labels, supplemental labels, or technical bulletins. Local agricultural authorities may be a source of information when using other BASF recommended combinations.

Do not apply **Poast** and **Storm** to soybeans that show injury, leaf phytotoxicity, and/or plant stunting caused by any other prior herbicide applications because this injury may be enhanced or prolonged.

Do not apply **Poast** and **Storm** through any type of irrigation system.

Do not apply to soybeans within 75 days of harvest.

Do not use treated plants for feed or forage.

Avoid drift to all other crops and non-target areas.

This product cannot be used to formulate or reformulate any other pesticide product.

In case of crop failure, only soybeans or peanuts may be immediately replanted.

**Crop rotation restriction:** Root crops (such as carrots, turnips, sweet potatoes, etc.) must not be planted in field treated with **Poast** and **Storm** for 18 months following treatment.

Do not apply more than 2 pints of **Basagran** or 1 pint of **Blazer** following an application of **Poast** and **Storm**.

Do not apply more than 1.5 pints of **Storm** following an application of **Poast** and **Storm**.

Do not apply sequential applications of **Blazer**, **Basagran**, or **Poast Plus** within 15 days following the application of **Poast** and **Storm**.

After application of **Poast** and **Storm**, do not apply more than 3.5 pints of **Poast** per acre, per season.

Do not use selective application equipment such as recirculating sprayers, wiper applicators, or shielded applicators when applying **Poast** and **Storm**.

**BEST AVAILABLE COPY**

14 of 20  
**Conditions of Sale and Warranty**

The **Directions For Use** of this product reflect the opinion of experts based on field use and tests. The directions are believed to be reliable and should be followed carefully. However, it is impossible to eliminate all risks inherently associated with use of this product. Crop injury, ineffectiveness or other unintended consequences may result, because of such factors as weather conditions, presence of other materials, or use of the product in a manner inconsistent with its labeling, all of which are beyond the control of BASF CORPORATION ("BASF") or the Seller. All such risks shall be assumed by the Buyer.

BASF warrants that this product conforms to the chemical description on the label and is reasonably fit for the purposes referred to in the **Directions For Use**, subject to the inherent risks, referred to above.

BASF MAKES NO OTHER EXPRESS OR IMPLIED WARRANTY OF FITNESS OR MERCHANTABILITY OR ANY OTHER EXPRESS OR IMPLIED WARRANTY. IN NO CASE SHALL BASF OR THE SELLER BE LIABLE FOR CONSEQUENTIAL, SPECIAL, OR INDIRECT DAMAGES RESULTING FROM THE USE OR HANDLING OF THIS PRODUCT. BASF and the Seller offer this product, and the Buyer and User accept it, subject to the foregoing

**Conditions of Sale and Warranty** which may be varied only by agreement in writing signed by a duly authorized representative of BASF.

*Storm and Blazer are registered trademarks of BASF Corporation.*

*Basagran and Pcasr are registered trademarks of BASF AG.*

*Duplex II and Prodigy system are trademarks of BASF Corporation.*

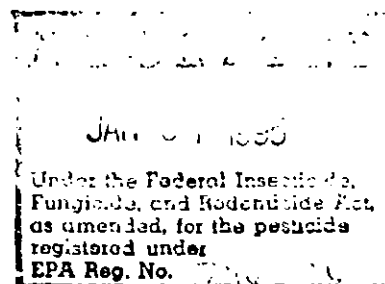
© 1994 BASF Corporation

**BEST AVAILABLE COPY**

**BASF Corporation**  
P.O. Box 13528  
Research Triangle Park, NC 27709

**BASF**

159/100



# Conclude™ B

## herbicide

### Postemergence Herbicide

#### Active Ingredients\*:

Sodium salt of bentazon: sodium (3-isopropyl-1H-2,1,3-benzothiadiazin-4(3H)-one-2,2-dioxide).....29.2%

Sodium salt of acifluorfen: sodium 5-[2-chloro-4-(trifluoromethyl)phenoxy]-2-nitrobenzoate .....13.4%

Inert ingredients .....57.4%

Total .....100.0%

\*Equivalent to 2.67 pounds per gallon bentazon: 3-isopropyl-(1 H-2,1,3-benzothiadiazin-4-(3H)-one-2,2-dioxide; and 1.33 pounds per gallon of sodium acifluorfen, sodium 5-[2-chloro-4-(trifluoromethyl) phenoxy]-2-nitrobenzoate.

EPA Reg. No. 7969-76

**KEEP OUT OF REACH OF CHILDREN.**

### DANGER/PELIGRO

Si usted no entiende la etiqueta, busque a alguien para que se la explique a usted en detalle. (If you do not understand the label, find someone to explain it to you in detail.)

### Statement of Practical Treatment

**If in eyes:** Flush with large amounts of water for at least 15 minutes. Get medical attention. **If on skin:** Wash with plenty of soap and water. Consult a physician if irritation persists. **If swallowed:** Call a physician or Poison Control Center. Drink 1 or 2 glasses of water and induce vomiting by touching back of throat with finger. Do not induce vomiting or give anything by mouth to an unconscious person. **Note to physician:** Emesis is recommended.

See inside booklet for complete **Directions For Use** and **Conditions of Sale and Warranty**.

#### Agricultural Use Requirements

Use this product only in accordance with its labeling and with the Worker Protection Standard, 40 CFR part 170. Refer to supplemental labeling under "Agricultural Use Requirements" in the **Directions For Use** for information about this standard.

### Net contents

BASF Corporation  
P.O. Box 13528, Research Triangle Park, NC, 27709

Specimen Label

**BEST AVAILABLE COPY**

**Precautionary Statements  
Hazards to Humans (And  
Domestic Animals):**

**DANGER.** Causes irreversible eye damage. Harmful if swallowed, inhaled or absorbed through the skin. Do not get in eyes. Avoid breathing vapor or spray mist and contact with skin or clothing. This product may cause an allergic skin response.

**Personal Protective Equipment (PPE)**

**Applicators and other handlers must wear:**

- Long-sleeved shirt and long pants
- Waterproof gloves
- Shoes plus socks
- Protective eyewear

Discard clothing and other absorbent materials that have been drenched or heavily contaminated with this product's concentrate. Do not re-use them. Follow manufacturer's instructions for cleaning/maintaining PPE. If no such instructions for washables, use detergent and hot water. Keep and wash PPE separately from other laundry.

**Engineering Controls**

**Statement:** When handlers use closed systems, enclosed cabs, or aircraft in a manner that meets the requirements listed in the Worker Protection Standard (WPS) for agricultural pesticides [40 CFR 170.240(d)(4-6)], the handler PPE requirements may be reduced or modified as specified in the WPS.

**User Safety Recommendations  
User should:**

- Wash hands before eating, drinking, chewing gum, using tobacco, or using the toilet.
- Remove clothing immediately if pesticide gets inside. Then wash thoroughly and put on clean clothing.
- Remove PPE immediately after handling this product. Wash the outside of gloves before removing. As soon as possible, wash thoroughly and change into clean clothing.

**Environmental Hazards**

For terrestrial uses, do not apply directly to water or to areas where surface water is present or to intertidal areas below the mean high water mark. Do not contaminate water when disposing of equipment wash waters. Do not apply when weather conditions favor drift from target areas.

**Directions For Use —  
Tank Mix of Conclude B and  
Conclude G**

(Hereafter referred to as **Conclude**)

It is a violation of federal law to use this product in a manner inconsistent with its labeling. Do not apply this product in a way that will contact workers or other persons, either directly or through drift. Only protected handlers may be in the area during application. For any requirements specific to your State or Tribe, consult the agency responsible for pesticide regulation.

**General Information**

**Conclude** is intended for the early postemergence control of a wide spectrum of broadleaf weeds and annual grasses in soybeans (See **Table 1**).

**Agricultural Use Requirements**

Use this product only in accordance with its labeling and with the Worker Protection Standard, 40 CFR part 170. This standard contains requirements for the protection of agricultural workers on farms, forests, nurseries, and greenhouses, and handlers of agricultural pesticides. It contains requirements for training, decontamination, notification, and emergency assistance. It also contains specific instructions and exceptions pertaining to the statements on this label about personal protective equipment (PPE), and restricted entry interval (REI). The requirements in this box only apply to uses of this product that are covered by the Worker Protection Standard.

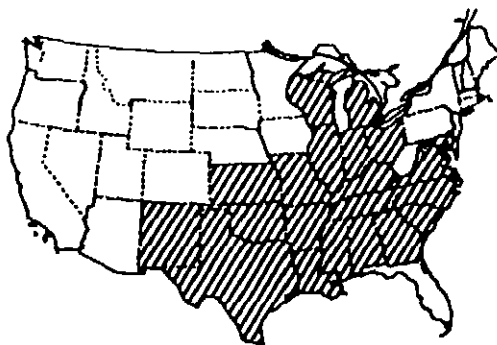
Do not enter or allow worker entry to treated areas during the REI of 48 hours.

PPE required for early entry to treated areas that is permitted under the Worker Protection Standard and that involves contact with anything that has been treated, such as plants, soil, or water, is:

- Coveralls over short-sleeved shirt and short pants
- Chemical-resistant gloves such as barrier laminate or viton  $\geq$  14 mils
- Chemical-resistant footwear plus socks
- Protective eyewear
- Chemical-resistant headgear for overhead exposure

**General Use Area**

Use only in the following states (see map): AL, AR, DE, GA, IL, IN, KS, KY, LA, MD, MI, MO, MS, NC, NM, OH, OK, SC, TN, TX, VA, and WI.



**Storage and Disposal**

Keep from freezing. Store above 32°F.

Do not contaminate water, food or feed by storage or disposal.

Pesticide wastes are acutely hazardous. Improper disposal of excess pesticide, spray mixture, or rinsate is a violation of federal law.

If these wastes cannot be disposed of by use according to label instructions, contact your State Pesticide or Environmental Control Agency, or the Hazardous Waste representative at the nearest EPA Regional Office for guidance.

Triple rinse container (or equivalent). Then offer for recycling or reconditioning, or puncture and dispose of in a sanitary landfill, or by incineration, or if allowed by state and local authorities, by burning. If burned, stay out of smoke.

**In Case of Emergency**

In case of large-scale spillage regarding this product, call:

CHEMTREC 800-424-9300

BASF Corporation 800-832-HELP

In case of medical emergency regarding this product, call:

1. Your local doctor for immediate treatment
2. Your local poison control center (hospital)
3. BASF Corporation 800-832-HELP

**BEST AVAILABLE COPY**



#### Mode of Action:

**Conclude** is effective through postemergence contact and systemic activity. Weeds must be thoroughly covered with spray. Large crop-and-weed-leaf canopies shelter smaller weeds and prevent adequate spray coverage.

#### Crop Tolerance:

All soybean varieties are tolerant to **Conclude** at all stages of growth. Leaf speckling may occur but plants generally outgrow this condition within 10 days.

#### Cultivation:

Do not cultivate before or during application or within five days after application of **Conclude**.

Cultivation may put weeds under stress and reduce control obtained. A timely cultivation 5-7 days after applying **Conclude** may assist weed control in soybeans grown in rows more than 10 inches apart.

#### Application Rate and Timing

Apply **Conclude B** and **Conclude G** at the rate of 1.5 pints each per acre at early postemergence when weeds are small and actively growing (generally when soybeans are in the 2nd to 3rd trifoliate leaf stage of growth). Add oil concentrate at a rate of 1 pint per acre. Under excessively dry, wet, or cold conditions, which may reduce herbicidal activity, add oil concentrate at the rate of 2 pints per acre.

#### Rhizome Johnsongrass

Rhizome johnsongrass is best controlled when **Conclude** is followed by **Poast Plus** herbicide when johnsongrass is 6-8 inches tall. The timing of **Conclude** should follow label directions for control of the annual grasses and broadleaf weeds. This timing will usually not be optimum for controlling rhizome johnsongrass, however, the **Conclude** will provide effective control of the johnsongrass vegetation and some rhizomes.

The sequential application of **Poast Plus** (1.5 pints per acre) will control the newly emerging vegetation as well as deplete the rhizome reserves when the following rates are used:

**Conclude**: 3.0 pints per acre based on the annual grass labelled directions (1.5 pints of **Conclude B** + 1.5 pints of **Conclude G**).

**Poast Plus**: 1.5 pints per acre on 6-8" rhizome johnsongrass  
Use 2 pints of oil concentrate per acre in each spray mix

#### Yellow Nutsedge

At the optimum application time of **Conclude** for most pests, yellow nutsedge may not be at the correct growth stage for optimum control. The best nutsedge control will be achieved by applying **Conclude** and a sequential application of **Basagran** at 1.5-2.0 pints per acre.

#### Duplex™ II System

**Conclude** is provided in a molded jug pack that contains enough **Conclude B** and **Conclude G** to treat 5 acres.

#### Mixing

Fill tank of a thoroughly clean sprayer half to two-thirds full with clean water. Start agitation and add the recommended amounts of product in the following order:

**Conclude B**, oil concentrate, and **Conclude G**. Then add the remaining quantity of water. Do not attempt to pour the contents of the **Duplex II** container system (**Conclude B** and **G**) into the tank simultaneously or poor mixing will result. Maintain constant agitation during application.

For optimum results with **Conclude** in a total postemergence, one-pass weed control system for soybeans, the following recommendations should be followed:

- plant rows 15" wide or less
- eliminate all vegetative weed growth prior to soybean planting
- apply **Conclude** according to weed sizes stated on this label (about 21 days after soybean planting).

#### Ground Application

Use a minimum of 10-20 gallons of water per broadcast acre at a minimum of 40 psi pressure (measured at the boom, not at the pump or in the line) to ensure adequate spray coverage. Use standard high pressure pesticide hollow cone or flat fan nozzles spaced 18-20 inches apart. Do not use flood, whirl chamber, or controlled droplet applicator nozzles.

#### Aerial Application

Use a minimum of 5 gallons of water per acre and a maximum of 40 psi pressure. To obtain uniform coverage and to avoid drift hazards, the following application equipment and practices should be used:

**Nozzle Type**: Use only diaphragm-type nozzles producing cone or fan spray patterns.

**Nozzle Height**: 6-10 feet above crop.

**Nozzle Orientation**: Nozzles must be oriented so as to discharge straight back with the air stream (opposite the direction of travel of the aircraft) and not more than 20° downwind.

Nozzles must be located no farther out than  $\frac{3}{4}$  the distance from the center of the aircraft to the end of the wing or rotor.

Do not apply **Conclude** by aircraft when wind is blowing at a velocity above 10 mph. Coarse sprays (larger droplets) are less likely to drift.

Do not apply **Conclude** by air if ornamental or sensitive nontarget crops such as cotton, sugar beets, sunflowers, or okra are within 200 feet downwind.

Applicator must follow the most restrictive use cautions to avoid drift hazard and must follow labeling as well as applicable state and local regulations and ordinances.

**BEST AVAILABLE COPY**

Table 1. Maximum Weed Heights Controlled by Tank Mixing Conclude B (1.5 pints per acre) and Conclude G (1.5 pints per acre) with Crop Oil Concentrate (1 pint per acre)

Broadleaves*	Maximum Weed Height	Grasses*	Maximum Weed Height
Bristly Starbur	3"	Barnyardgrass	4"
Carpetweed	2"	Broadleaf Signalgrass	4"
Cocklebur	6"	Crabgrass, Large	4"
Common Lambsquarters <sup>b</sup>	2"	Crabgrass, Smooth	4"
Common Ragweed	3"	Foxtail, Giant	4"
Crotalaria	6"	Foxtail, Green	4"
Croton, Tropic	<2"	Foxtail, Yellow	4"
, Woolly	<2"	Goosegrass	4"
Eclipta	2"	Johnsongrass (seedling)	4"
Giant Ragweed	6"	Junglegrass	4"
Jimsonweed	6"	Panicum, Browntop	4"
Ladysthumb	6"	Panicum, Fall	4"
Morningglories	2"	Panicum, Texas	4"
Nightshade, Black	2"	Red Sprangletop	4"
Pigweed, Redroot	2"	Witchgrass	4"
, Smooth	3"	Woolly Cupgrass	4"
Prickly Sida/Teaweed <sup>b</sup>	2"		
Redweed	3"		
Sesbania	6"		
Smartweed, Pennsylvania	4"		
Spurred Anoda <sup>b</sup>	2"		
Texasweed <sup>b</sup>	3"		
Velvetleaf <sup>b</sup>	2"		
Verice Mallow	2"		
Wild Mustard	4"		
		<b>Perennials:</b> (top growth suppression)	<b>Maximum Weed Height</b>
		Johnsongrass (Rhizome)	Based on application timing of annual grasses
		Yellow Nutsedge	

\* For new germination or perennial regrowth, follow up no sooner than 15 days later with Basagran<sup>®</sup> herbicide, Poast Plus<sup>®</sup> herbicide, Storm<sup>®</sup> herbicide, or Blazer<sup>®</sup> herbicide. Refer to the respective labels for Directions For Use.

<sup>b</sup> Control may be inconsistent. A later application of Basagran may be necessary. (See Basagran label.)

#### Procedure For Cleaning Spray Equipment

Clean sprayer thoroughly before and after application of **Conclude**, particularly if a herbicide with the potential to injure crops was previously used. Consult the label of the previously used herbicide for cleaning instructions. If no instructions are available, the steps listed below are suggested for thorough cleaning of spray equipment prior to or following application of **Conclude**.

**Step 1:** Hose down thoroughly the inside as well as the outside of equipment while filling the spray tank half full of water.  
Flush by operating sprayer until the system is purged of this rinse water.

**Step 2:** Refill tank with water while adding 1 gallon household ammonia or 1 pint household dishwashing detergent or 1 pound of dishwasher detergent per 100 gallons of water. Or add a commercial sprayer cleaner according to the manufacturer's directions.  
Operate the pump to circulate the detergent solution through the sprayer system for 5-10 minutes and discharge a small amount of solution through the boom and nozzles. Let the solution stand for 24 hours.

**Step 3:** Flush the detergent solution out of the spray tank through the boom.

**Step 4:** Remove the nozzles and screens and flush the system with two tankfuls of water.

**BEST AVAILABLE COPY**

### Restrictions and Limitations

Always read and follow all label directions when using any pesticide alone or in tank mix combinations. The most restrictive label applies when using tank mixes. Only one application of **Conclude** per acre per season should be made.

Do not apply to weeds under stress, such as stress due to lack of moisture, previous herbicide injury, mechanical injury or cold temperatures, as unsatisfactory weed control could result.

Do not apply if rainfall is expected soon after application. Overhead irrigation within 8 hours

Physical incompatibility, reduced weed control, or crop injury may result from mixing **Conclude** with other pesticides (fungicides, herbicides, insecticides or miticides) additives or fertilizers not recommended on the label. BASF does not recommend the use of **Conclude** in tank mixes other than those listed on BASF labels, supplemental labels, or technical bulletins. Local agricultural authorities may be a source of information when using other BASF recommended combinations.

Do not apply **Conclude** to soybeans that show injury, leaf phytotoxicity, and/or plant stunting caused by any other prior herbicide applications because this injury may be enhanced or prolonged.

Do not apply **Conclude** through any type of irrigation system.

Do not apply to soybeans within 75 days of harvest.

Do not use treated plants for feed or forage.

Avoid drift to all other crops and non-target areas.

This product cannot be used to formulate or reformulate any other pesticide product.

In case of crop failure, only soybeans or peanuts may be immediately replanted.

**Crop rotation restriction:** Root crops (such as carrots, turnips, sweet potatoes, etc.) must not be planted in field treated with **Conclude** for 18 months following treatment.

Do not apply more than 2 pints of **Basagran** or 1 pint of **Blazer** following an application of **Conclude**.

Do not apply more than 1.5 pints of **Storm** following an application of **Conclude**.

Do not apply sequential applications of **Blazer**, **Basagran**, or **Poast Plus** within 15 days following the application of **Conclude**.

After application of **Conclude**, do not apply more than 3.5 pints of **Poast** per acre, per season.

Do not use selective application equipment such as recirculating sprayers, wiper applicators, or shielded applicators when applying **Conclude**.

### Conditions of Sale and Warranty

The **Directions For Use** of this product reflect the opinion of experts based on field use and tests. The directions are believed to be reliable and should be followed carefully. However, it is impossible to eliminate all risks inherently associated with use of this product. Crop injury, ineffectiveness or other unintended consequences may result, because of such factors as weather conditions, presence of other materials, or use of the product in a manner inconsistent with its labeling, all of which are beyond the control of BASF CORPORATION ("BASF") or the Seller. All such risks shall be assumed by the Buyer.

BASF warrants that this product conforms to the chemical description on the label and is reasonably fit for the purposes referred to in the **Directions For Use**, subject to the inherent risks, referred to above. BASF MAKES NO OTHER EXPRESS OR IMPLIED WARRANTY OF FITNESS OR MERCHANTABILITY OR ANY OTHER EXPRESS OR IMPLIED WARRANTY. IN NO CASE SHALL BASF OR THE SELLER BE LIABLE FOR CONSEQUENTIAL, SPECIAL OR INDIRECT DAMAGES RESULTING FROM THE USE OR HANDLING OF THIS PRODUCT. BASF and the Seller offer this product, and the Buyer and User accept it, subject to the foregoing **Conditions of Sale and Warranty** which may be varied only by agreement in writing signed by a duly authorized representative of BASF.

*Basagran and Poast are registered trademarks of BASF AG.*

*Conclude B and Conclude G are trademarks of BASF Corporation.*

*Storm, Poast Plus, and Blazer are registered trademarks of BASF Corporation.*

© 1994 BASF Corporation

NVA ...

**BEST AVAILABLE COPY**

2000

BASF Corporation  
P.O. Box 13528  
Research Triangle Park, NC 27709

**BASF**

Agricultural Products