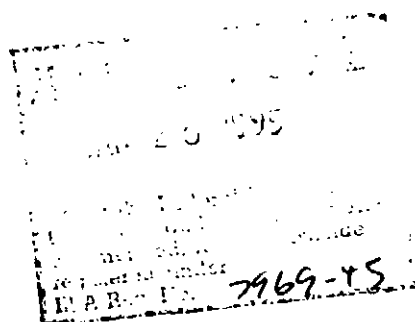


7969-45
BASF



ResultTM A

herbicide

Postemergence Herbicide For Soybeans

Active Ingredient:

Sodium [3-(1-methylethyl)-1H,2,1,3-benzothiadiazin-4(3H)-one-2,2-dioxide]*42%

Inert Ingredients:58%

TOTAL100%

*Equivalent to 4 pounds per gallon [3-(1-methylethyl)-1H,2,1,3-benzothiadiazin-4(3H)-one-2,2-dioxide]

EPA Reg. No. 7969-45

KEEP OUT OF REACH OF CHILDREN.
CAUTION

Statement of practical treatment

Avoid contact with eyes or skin. **In case of contact**, immediately flush eyes or skin with plenty of water. Get medical attention if irritation persists. May cause allergic skin response.

First aid: If contacted, flush eyes immediately with water for at least 15 minutes. Call a physician.

See inside booklet for complete **Directions For Use** and **Conditions of Sale and Warranty**.

Agricultural Use Requirements

Use this product only in accordance with its labeling and with the Worker Protection Standard, 40 CFR part 170. Refer to supplemental labeling under "Agricultural Use Requirements" in the **Directions For Use** section for information about this standard.

Net contents

BASF Corporation
P.O. Box 13528, Research Triangle Park, NC, 27709

Specimen Label

**Precautionary Statements
Hazards to Humans (and
Domestic Animals)**

CAUTION:

Avoid contact with eyes or skin. In case of contact, immediately flush eyes or skin with plenty of water. Get medical attention if irritation persists. May cause allergic skin response.

Personal Protective Equipment (PPE)

Applicators and other handlers must wear:

- Long-sleeved shirt and long pants
- Waterproof gloves
- Shoes plus socks

Follow manufacturer's instructions for cleaning and maintaining PPE. If no such instructions for washables, use detergent and hot water. Keep and wash PPE separately from other laundry.

**Engineering Controls
Statement:**

When handlers use closed systems, enclosed cabs, or aircraft in a manner that meets the requirements listed in the Worker Protection Standard (WPS) for agricultural pesticides [40 CFR 170.240(d)(4-6)], the handler PPE requirements may be reduced or modified as specified in the WPS.

**User Safety Recommendations
Users should:**

- Wash hands before eating, drinking, chewing gum, using tobacco, or using the toilet.
- Remove clothing immediately if pesticide gets inside. Then wash thoroughly and put on clean clothing.
- Remove PPE immediately after handling this product. Wash the outside of gloves before removing. As soon as possible, wash thoroughly and change into clean clothing.

Environmental Hazards

For terrestrial uses, do not apply directly to water or to areas where surface water is present or to intertidal areas below the mean high water mark. Do not contaminate water when disposing of equipment wash waters.

Notice: It is a violation of Federal law to use any pesticide in a manner that results in the death of an endangered species or an adverse modification of their habitat.

The use of this product may pose a hazard to certain federally designated endangered species known to occur in specific areas within the California counties of Merced, Sacramento, and Solano.

Before using this product in these

counties, you must obtain the EPA Endangered Species Bulletin specific for these areas. The bulletin (EPA/ES-85-8) is available from: either your County Agricultural Extension Agent, the Endangered Species Specialist in your State Wildlife Agency Headquarters, or the Regional Office of the U.S. Fish and Wildlife Service (Portland, Oregon). **The use of this product is prohibited in these counties unless specified otherwise in the bulletin.**

1. Case of Emergency

In case of large-scale spillage regarding this product, call:

CHEMTREC 800-424-9300

BASF Corporation 800-832-HELP

In case of medical emergency regarding this product, call:

1. Your local doctor for immediate treatment

2. Your local poison control center (hospital)

3. BASF Corporation 800-832-HELP

BEST AVAILABLE COPY

Directions For Use — Rezult A And B

(Hereafter referred to as **Rezult**)

It is a violation of Federal law to use this product in a manner inconsistent with its labeling. Do not apply this product in a way that will contact workers or other persons, either directly or through drift. Only protected handlers may be in the area during application. For any requirements specific to your State or Tribe, consult the agency responsible for pesticide regulation.

Rezult A must be used in combination with Rezult B.

Agricultural Use Requirements

Use this product only in accordance with its labeling and with the Worker Protection Standard, 40 CFR part 170. This Standard contains requirements for the protection of agricultural workers on farms, forests, nurseries, and greenhouses, and handlers of agricultural pesticides. It contains requirements for training, decontamination, notification, and emergency assistance. It also contains specific instructions and exceptions pertaining to the statements on this label about personal protective equipment (PPE), and restricted-entry interval. The requirements in this box only apply to uses of this product that are covered by the Worker Protection Standard.

Do not enter or allow worker entry into treated areas during the restricted entry interval (REI) of 48 hours.

PPE required for early entry to treated areas that is permitted under the Worker Protection Standard and that involves contact with anything that has been treated, such as plants, soil, or water, is:

- Coveralls
- Chemical-resistant gloves such as barrier laminate, nitrile rubber ≥ 14 mils, neoprene rubber ≥ 14 mils, or viton ≥ 14 mils
- Shoes plus socks

General Information

Rezult is intended for the post-emergence control of a wide spectrum of broadleaf and grass weeds in soybeans.

Prodigy™ System:

The **Prodigy System** is a unique, 120-gallon closed returnable delivery system. It consists of a self-discharging tank that does not require any pumping mechanism, and has a dry lock connector which protects the user from exposure to system contents.

Do not refill **Prodigy System**.

Return **Prodigy System** to BASF for cleaning and refilling.

Rezult in a dedicated, returnable **Prodigy System** can only be used with the closed **Prodigy System** in which it comes packaged.

The **Prodigy System**, when operated according to directions, will discharge **Rezult A** and **B** in a 1:1 ratio. See **Prodigy System Operating Procedure**.

Always read and follow all label directions when using any pesticide alone or in tank mix combinations. The most restrictive labeling applies when using a tank mix.

Mode of Action:

Rezult is effective through post-emergence contact and systemic activity. Weeds must be thoroughly covered with spray. Large crop-and-weed-leaf canopies shelter smaller weeds and prevent adequate spray coverage.

Crop Tolerance:

All soybean varieties are tolerant to **Rezult** at all stages of growth. Leaf speckling may occur, but plants generally outgrow this condition within 10 days.

Rotational Crops:

Rezult has no crop rotation restrictions. If treated crop is destroyed due to weather conditions such as hail, flooding, freezing, etc., allow 14 days before replanting with corn, sorghum, or small grain crops. If tank mixing with **Blazer**®, **Classic**®, **Concert**®, or **Reflex**® herbicide, refer to respective label for crop rotation restrictions.

Cultivation:

Do not cultivate before application or within five days after application of **Rezult**. Cultivation may put weeds under stress and reduce control.

A timely cultivation 5-7 days after applying **Rezult** may assist weed control in soybeans grown in rows greater than 10 inches apart.

Application Rate and Timing

Apply **Rezult** at 3.25 pints per acre early postemergence when weeds are small and actively growing (generally when soybeans are in the 1st to 3rd trifoliate leaf stage of growth). See **Table 1** for recommended size. **Rezult** can be applied at a maximum rate of 4.0 pints per acre. Always add 2 quarts of UAN solution per acre (see **Nitrogen Solution**) except when a silicone adjuvant is recommended for use with **Blazer** and **Reflex** tank mixes (see **Table 2**).

Nitrogen Solution

UAN solution is commonly referred to as 28%, 30%, or 32% nitrogen, and is a water solution of urea and ammonium nitrate. Because most nitrogen solutions are corrosive to galvanized steel and brass spray equipment, rinse the entire spray system with water after use. Ammonium sulfate (AMS) can be substituted at 2 pounds per acre.

Note about ammonium sulfate (AMS):

Use high-quality ammonium sulfate to avoid plugging of spray nozzles. The ammonium sulfate must be readily soluble in water and contain no insoluble materials. Local sources of high-quality, spray-grade ammonium sulfate are recommended. Low-quality ammonium sulfate may contain material that will not readily dissolve which could result in nozzle tip plugging. To determine quality, perform a jar test adding $\frac{1}{3}$ cup ammonium sulfate to 1 gallon of water and agitate for 1 minute. If undissolved sediment is observed, predissolve the ammonium sulfate in water and filter prior to addition to the spray tank. If ammonium sulfate can be added directly to the spray tank, add slowly with agitation. Adding too quickly may clog outlet lines. Ensure that ammonium sulfate is completely dissolved in the spray tank before adding other products.

BEST AVAILABLE COPY

Table 1: Maximum Weed Heights Controlled by Rezult at 3.25* pints per acre + Nitrogen Solution at 2 quarts per acre^b

Broadleaves	Maximum Weed Height	Grasses	Maximum Weed Height	Perennials (top growth suppression)	Maximum Weed Height
Balloonvine	2*	Barleygrass	4*	Canada Thistle ^c	6*
Beggarticks	5*	Broadleaf Signal Grass	4*	Johnsongrass ^c	4*
Bristly Starbur	2*	Crabgrass, Large	2*	(Rhizome)	
Cocklebur	5*	, Smooth	2*	Quackgrass ^c	4*
Dayflower	4*	Foxtail, Giant	6*	Wirestem Muhly ^c	4*
Jimsonweed	5*	, Green	6*	Yellow Nutsedge ^c	6*
Ladysthumb	5*	, Yellow	6*		
Lambsquarters, Common	1*	Goosegrass	4*		
Marshelder	2*	Johnsongrass	4*		
Purslane, Common	1*	(seedling)			
Prickly Sida/Tea Weed	3*	Junglerice	4*		
Ragweed, Common	1*	Panicum, Browntop	4*		
, Giant	2*	, Fall	4*		
Redweed	5*	, Texas	4*		
Shepherdspurse	4*	Red Sprangletop	4*		
Smartweed, Pennsylvania	5*	Ryegrass, Annual	4*		
Spurred Anoda	3*	Shattercane	4*		
Tropic Croton	2*	Volunteer Corn	12*		
Velvetleaf	5*	Wild Oats	2*		
Vernice Mallow	2*	Wild Proso Millet	8*		
Wild Buckwheat	3*	Witchgrass	4*		
Wild Mustard	4*	Woolly Cupgrass	4*		
Wild Sunflower	4*				
Wild Poinsettia	4*				

* Rezult can be applied at a maximum rate of 4.0 pints per acre.

^b AMS can be substituted at 2 pounds per acre.

^c For regrowth or new germination follow up 10-14 days later with Basagran. Refer to Basagran label.

^d For regrowth or new germination follow up 10-14 days later with Poast Plus. Refer to Poast Plus label.

Rezult Prodigy™ System Operating Procedure

- 1) Install a male dry lock connector to the spray tank.
- 2) Connect the female dry lock connector (at the end of the hose attached to the **Prodigy System**) with the male dry lock connector installed on the spray tank.
- 3) Turn on the nitrogen gas supply.
- 4) Set measuring meter to zero.
- 5) Turn on the **Prodigy System** manifold until the desired amount of product, as indicated on the measuring meter, has been discharged into the spray tank.
- 6) Turn off the **Prodigy System** manifold to stop the discharge of product into the sprayer tank.
- 7) Disconnect the female dry lock connector on the **Prodigy System** hose from the male dry lock connector on the spray tank.
- 8) Turn off the nitrogen gas supply when the **Prodigy System** is empty, operation is completed or tank is ready to be returned to the point of purchase.

Mixing

- 1) Fill tank of a thoroughly clean sprayer one half to two-thirds full with clean water. Start agitation.
- 2) Add nitrogen solution or silicone adjuvant.
- 3) Add tank mix partner (if applicable).
- 4) Add **Rezult** and remaining volume of water.
- 5) Allow to mix thoroughly.
- 6) Maintain constant agitation during application.
- 7) After dispensing **Rezult** from the **Prodigy System**, spray within 48 hours.

Ground Application

Use a minimum of 10 gallons of water per acre at a minimum of 40 psi pressure (measured at the boom, not at the pump or in the line) to ensure adequate spray coverage. When crop and weed foliage is dense, use up to 20 gallons of water at a minimum of 60 psi pressure. Use standard high pressure pesticide hollow cone or flat fan nozzles spaced 20 inches apart. Do not use flood or whirl chamber nozzles. Brass nozzles are not recommended due to the corrosive effects of nitrogen additives.

Aerial Application

Use a minimum of 5 gallons of water per acre and a maximum of 40 psi pressure. To obtain uniform coverage and to avoid drift hazards, the following application equipment and practices should be used:

Nozzle Type: Use only diaphragm-type nozzles producing cone or fan spray patterns.

Nozzle Height: Maximum of 10 feet above crop.

Nozzle Orientation: Nozzles must be oriented so as to discharge straight back with the air stream (opposite the direction of travel of the aircraft) or at some angle between straight back and straight down.

Nozzles must be located no farther out than $\frac{3}{4}$ the distance from the center of the aircraft to the end of the wing or rotor.

Do not apply **Rezult** by aircraft within 200 feet upwind of ornamental or sensitive nontarget crops such as corn, cotton, small grains, sugar beets, or sunflowers.

Applicator must follow the most restrictive use cautions to avoid drift hazard and must follow labeling as well as applicable state and local regulations and ordinances.

BEST AVAILABLE COPY

Table 2: Tank Mixes with Rezult:

Rezult at 3.25 pints per acre can be tank mixed with the following products for improved control of the weed species listed:

Tank Mix Partner ^a Rate per acre	Concert ^b 1/5 oz.	Classic ^b 1/4 oz.	Blazer ^c 10 fl. oz.	Blazer ^c 5 fl. oz.	Reflex ^b 10 fl. oz.	Reflex ^b 5 fl. oz.	2,4-DB ^b 1 fl. oz.
Adjuvant Rate per acre	UAN 2 quarts	UAN 2 quarts	Silicone ^c 0.125-0.25% v/v	Silicone ^c 0.125-0.25% v/v	Silicone 0.125-0.25% v/v	Silicone 0.125-0.25% v/v	UAN 2 quarts
Lambsquarters, Common	2*	—	2*	—	2*	—	—
Morningglories	—	—	1*	—	1*	—	1*
Nightshade	—	—	<2*	—	<2*	—	—
Pigweed, Redroot	2*	1*	2*	1*	2*	1*	—
Smooth	2*	1*	2*	1*	2*	1*	—
Ragweed, Common	—	—	3*	2*	3*	2*	—
Giant	—	—	6*	4*	6*	4*	—
Sunflower, Wild	5*	5*	—	—	—	—	—
Waterhemp, Tall	2*	1*	2*	1*	2*	1*	—

Tank Mix Information:

- * Potential crop symptoms such as leafburn (**Blazer** or **Reflex**) or stunting (**Concert** or **Classic**) are most likely to occur under hot/humid or stress conditions. Any injury which may occur is generally outgrown in 10-14 days with no significant crop effects.
- ^a Refer to each respective label for restrictions and limitations. The most restrictive labeling applies to all **Rezult** tank mixes.
- ^c For best results with **Blazer** when velvetleaf is present, use a silicone adjuvant at 0.125-0.25% v/v and 1 pint per acre of 28% UAN or AMS can be substituted at 0.5 pound per acre.

Procedure For Cleaning Spray Equipment

Clean sprayer thoroughly before and after application of **Rezult**, particularly if a herbicide with the potential to injure crops was used. Consult the label of the previously used herbicide for cleaning instructions. If no instructions are available, the steps listed below are suggested for thorough cleaning of spray equipment prior to or following application of **Rezult**.

Step 1: Hose down thoroughly the inside as well as the outside of equipment while filling the spray tank half full of water. Flush by operating sprayer until the system is purged of this rinse water.

Step 2: Refill tank with water while adding 1 gallon household ammonia or 1 pint household dishwashing detergent or 1 pound of dishwasher detergent per 100 gallons of water. Or add a commercial sprayer cleaner according to the manufacturer's directions. Operate the pump to circulate the detergent solution through the sprayer system for 5-10 minutes and discharge a small amount of solution through the boom and nozzles. Let the solution stand for 24 hours.

Step 3: Flush the detergent solution out of the spray tank through the boom.

Step 4: Remove the nozzles and screens and flush the system with a minimum of 50 gallons of water twice.

Storage and Disposal

Do not allow this product to freeze. Do not contaminate water, food, or feed by storage or disposal. Wastes resulting from the use of this product may be disposed of on site or at an approved waste disposal facility. Do not re-use empty container. **Prodigy™ System** must be returned to the point of purchase for cleaning and refilling.

Restrictions and Limitations

Always read and follow all label directions when using any pesticide alone or in tank mix combinations. The most restrictive labeling applies when using a tank mix.

Do not apply **Rezult** to soybeans under stress due to lack of moisture, previous herbicide injury, mechanical injury, or cold temperatures, as crop injury may result.

Do not apply to weeds under stress, such as stress due to lack of moisture, previous herbicide injury, mechanical injury or cold temperatures, as unsatisfactory control could result.

Do not apply if rainfall or irrigation is expected within one hour following application.

Physical incompatibility, reduced weed control, or crop injury may result from mixing **Rezult** with other pesticides (fungicides, herbicides, insecticides or miticides), additives or fertilizers not recommended on the label.

BASF does not recommend the use of **Rezult** in tank mixes other than those listed on BASF labels, supplemental labels, or technical bulletins. Local agricultural authorities may be a source of information when using other than BASF recommended combinations.

Do not apply **Rezult** as a preplant or preemergent treatment prior to corn, millet, sorghum, or small grain crops.

Do not apply **Rezult** through any type of irrigation system.

Do not apply to soybeans within 75 days of harvest.

Do not graze treated soybean fields and do not feed treated soybean forage (green succulent) or ensilage to livestock.

Do not graze or cut treated soybean fields for hay for at least 30 days after the last treatment of **Rezult**.

Do not apply more than a total of 4 pints of **Rezult** per acre in one season.

BEST AVAILABLE COPY

BEST AVAILABLE COPY

Conditions of Sale and Warranty
The **Directions For Use** of this product reflect the opinion of experts based on field use and tests. The directions are believed to be reliable and should be followed carefully. However, it is impossible to eliminate all risks inherently associated with use of this product. Crop injury, ineffectiveness or other unintended consequences may result, because of such factors as weather conditions, presence of other materials, or use of the product in a manner inconsistent with its labeling, all of which are beyond the control of BASF CORPORATION ("BASF") or the Seller. All such risks shall be assumed by the Buyer.

BASF warrants that this product conforms to the chemical description on the label and is reasonably fit for the purposes referred to in the **Directions For Use**, subject to the inherent risks, referred to above. BASF MAKES NO OTHER EXPRESS OR IMPLIED WARRANTY OF FITNESS OR MERCHANTABILITY OR ANY OTHER EXPRESS OR IMPLIED WARRANTY. IN NO CASE SHALL BASF OR THE SELLER BE LIABLE FOR CONSEQUENTIAL, SPECIAL OR INDIRECT DAMAGES RESULTING FROM THE USE OR HANDLING OF THIS PRODUCT. BASF and the Seller offer this product, and the Buyer and User accept it, subject to the foregoing **Conditions of Sale and Warranty** which may be varied only by agreement in writing signed by a duly authorized representative of BASF.

Prodigy is a trademark of BASF Corporation.

Patent pending on container.

Basagran is a registered trademark of BASF AG.

Blazer and Poast Plus are registered trademarks and Rezult is a trademark of BASF Corporation.

Classic and Concert are registered trademarks of E.I. DuPont de Nemours and Company.

Reflex is a registered trademark c/ Imperial Chemicals Industries PLC.

© 1994 BASF Corporation

NVA

BASF Corporation
P.O. Box 13528
Research Triangle Park, NC 27709

BASF