

Mauget®
MYCOJECT™

**SYSTEMIC ANTIBACTERIAL
 IN READY TO USE CAPSULES**

**FOR TREE INJECTION USE FOR SEASONAL SUPPRESSION
 OF CERTAIN DISEASES OF ORNAMENTAL TREES**

ACTIVE INGREDIENT:
 Oxytetracycline Calcium Complex..... 4.22%
INERT INGREDIENTS..... 95.78%
TOTAL 100.0%

**KEEP OUT OF REACH OF CHILDREN
 CAUTION**

FIRST AID	
IF INHALED	<ul style="list-style-type: none"> • Move person to fresh air. • If person is not breathing, call 911 or an ambulance, then give artificial respiration, preferably by mouth-to-mouth, if possible. • Call a poison control center or doctor for further treatment advice.
IF ON THE SKIN OR CLOTHING	<ul style="list-style-type: none"> • Take off contaminated clothing. • Rinse skin immediately with plenty of water for 15-20 minutes. • Call a poison control center or doctor for treatment advice.
IF IN EYES	<ul style="list-style-type: none"> • Hold eye open and rinse slowly and gently with water for 15-20 minutes. • Remove contact lenses, if present, after the first 5 minutes, then continue rinsing eye. • Call a poison control center or doctor for treatment advice.
IF SWALLOWED	<ul style="list-style-type: none"> • Call a poison control center or doctor immediately for treatment advice. • Have person sip a glass of water if able to swallow. • Do not induce vomiting unless told to do so by a poison control center or doctor. • Do not give anything by mouth to an unconscious person.
HOT LINE NUMBER	
Have the product container or label with you when calling a poison control center or doctor, or going for treatment. You may also contact 1-800-535-5053 for emergency treatment information.	
NOTE TO PHYSICIAN	
There is no specific antidote available. Treat Patient symptomatically.	

MFG. BY: J.J. MAUGET CO.
 TOWN, STATE: Arcadia, CA 90065
 EPA REGISTRATION NO: 7946-18
 EPA ESTABLISHMENT NO: 7946-CA-1

Net Contents: 25 capsules plus 25 feeder tubes per carton
 _____ 25 capsules @ 6 mL, 100mL net
 _____ Shipping box: 12 cartons as above.

**PRECAUTIONARY STATEMENTS
 HAZARDS TO HUMANS AND DOMESTIC ANIMALS
 CAUTION**

Causes moderate eye irritation. Avoid contact with eyes or clothing. Wash thoroughly with soap and water after handling.

Personal Protective Equipment:

Some materials that are chemical resistant to this product are listed below. If you want more options, follow the instructions for category C on an EPA chemical resistance category selection chart.

Applicators and other handlers must wear:

- Long-sleeved shirt and pants
- Chemical resistant gloves, such as polyethylene or butyl rubber or neoprene rubber or viton.
- Protective eyewear.

User Safety Recommendations:

Users should:

- Wash hands before eating, drinking, chewing gum, using tobacco or using the toilet.
- Remove clothing immediately if pesticide gets inside. Then wash thoroughly and put on clean clothing.
- Remove PPE immediately after handling this product. Wash the outside of gloves before removing. As soon as possible, wash thoroughly and change into clean clothing.

ENVIRONMENTAL HAZARDS:

Do not apply directly to water. Do not contaminate water when disposing of equipment washwater or rinsate.

PHYSICAL OR CHEMICAL HAZARDS:

Do not use or store near heat or open flame.

DIRECTIONS FOR USE

IT IS A VIOLATION OF FEDERAL LAW TO USE THIS PRODUCT IN ANY MANNER INCONSISTENT WITH ITS LABELING.

Do not apply this product in a way that will contact workers or other persons, either directly or through drift. Only protected handlers may be in the area during application. For any requirements specific to your state or tribe, consult the agency responsible for pesticide regulation.

AGRICULTURAL USE REQUIREMENTS

Use this product only in accordance with labeling and Workers Protection Standard, 40 CFR part 170. This Standard contains requirements for the protection of agricultural workers on farms, forests, nurseries, and greenhouses, and handlers of agricultural pesticides. It contains requirements for training, decontamination, notification, and emergency assistance. It also contains specific instructions and exceptions pertaining to the statements on this label about personal protective equipment (PPE). The requirements in this box only apply to uses of this product that are covered by the Worker Protection Standard.

STORAGE AND DISPOSAL

Do not contaminate water, food or feed by storage or disposal of microinjection capsules. Do not reuse micro-injection capsules.

STORAGE: Store in a cool, dry place with capsules in an upright position.

DISPOSAL: Dispose of empty capsule in a sanitary landfill or by incineration if approved by State and local authorities.

GENERAL DIRECTIONS

Measure the tree at chest height in inches. If measuring the circumference of the tree, divide this number by six (6) to determine the number of capsules needed. If measuring the diameter of the tree, divide this number by two (2) to determine the number of capsules needed. Apply the injector units around the tree at the root flare. Consult the enclosed pamphlet "Directions for the use and application of Mauget Injector Units" for additional instructions. Applicators shall remove capsules promptly after treatment.

Important: Trees in advanced stages of disease development may not respond to treatment. Infected trees will absorb the material more slowly due to the vascular plugging caused by the disease. If Mycoject is not absorbed within 24 hours, the tree is considered high risk and has a poor chance of survival.

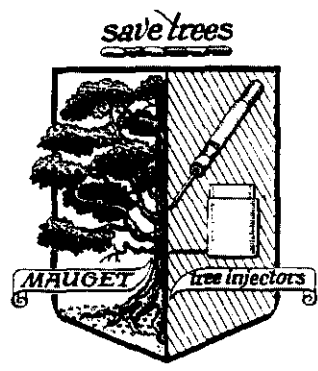
RESTRICTIONS

Do not inject trees that are less than two inches in diameter.
Do not inject trees within 60 days of harvest.

CROP/USE	DISEASE
Ash	Ash Yellows
Elm	Bacterial Leaf Scorch Phloem Necrosis
Oak (Red)	Bacterial Leaf Scorch
Palm	Palm Lethal Yellows
Peach	X Disease
Pear	Fire Blight
Pecan (Non Bearing)*	Bunch Disease
Plum (Non Bearing)*	Leaf Scald

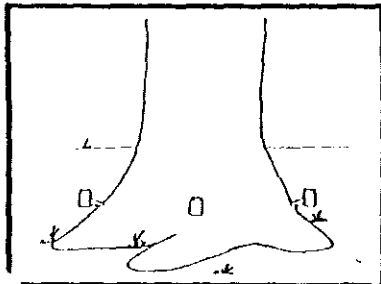
ACCEPTED
 JUL 30 2002
 Under the Federal Insecticide, Fungicide, and Rodenticide Act, as amended, for the pesticide registered under EPA Reg. No. 1940-15

*Trees which will not bear harvestable fruit within one year of application



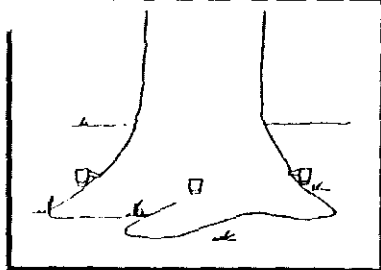
NOTICE OF WARRANTY

J.J. Mauget Co. makes no warranty of merchantability, fitness for any purpose or otherwise expressed or implied concerning this product or its uses which extends beyond the use of the product under normal conditions in accord with the statements made on this label.



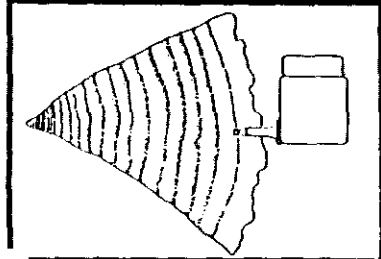
9. CAPSULE POSITION

Turn the capsule right side up to allow the material to flow through the tube into the xylem and phloem tissue in the tree.



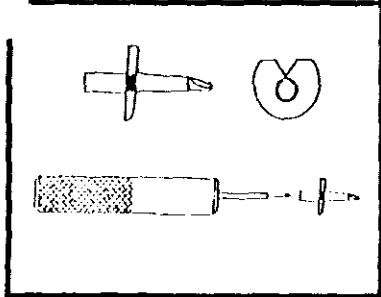
10. REMOVAL & DISPOSAL

Allow time for the tree to absorb all the liquid material. Turn the capsule upside down for a minute before removal. Applicators shall remove capsules promptly after treatment. Follow instructions on product label for capsule disposal.



11. MICRO MINI-FEEDER TUBE

For established trees with thin bark (less than 3/8" thickness). Use a 7/64" drill bit to produce a micro-injection site.



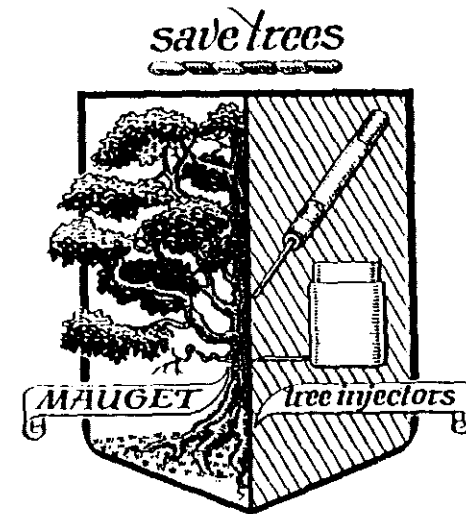
12. MICRO MINI-INSERTION TOOL

Because the 7/64" micro-injection site is so small, it is recommended that the Micro mini insertion tool (316-NAM) be used to prevent plugging of the feeder tube & insure a clear pathway to the cambium tissue. Be sure to place the tube with the notch up.

DIRECTIONS
for use and application of

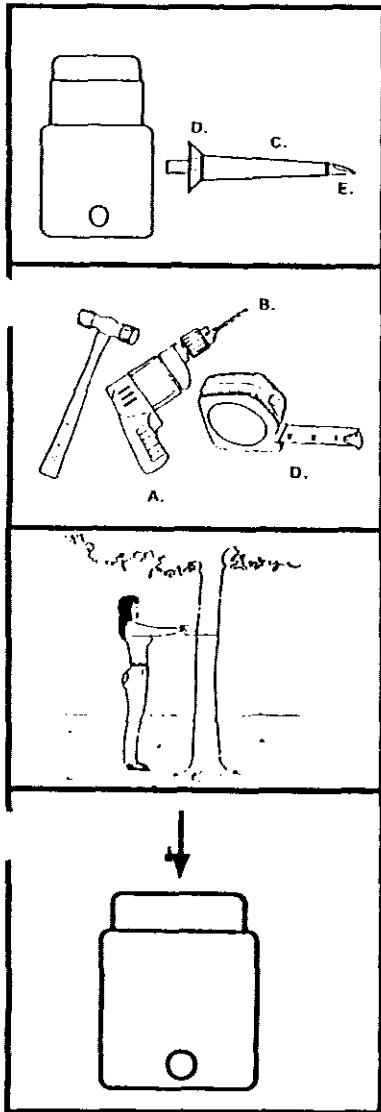
Mauget

Micro-Injection system



REFER TO PRODUCT LABEL FOR ADDITIONAL
PRECAUTIONS AND LIMITATIONS ON THE
USE OF THIS PRODUCT

3/4



1. WHAT'S THE SYSTEM?

- A)...The Mauget two piece capsule.
- B)...Insert hole.
- C)...Feeder tube.
- D)...Flanged gun-site end.
- E)...Tapered beveled end.

2. WHAT TOOLS ARE NEEDED?

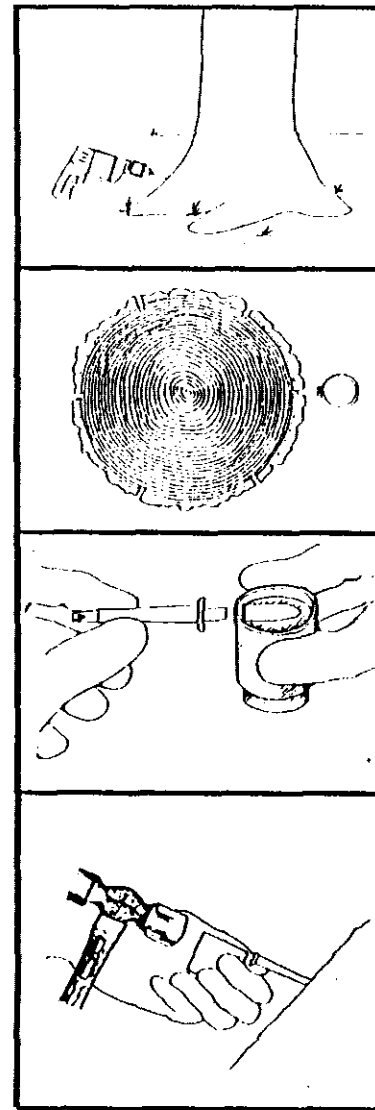
- A)... Electric Drill.
- B)... 11/64" Drill bit.
- C)... Plastic Mallet (I hammer).
- D)... Tape Measure
- E)... Consult product label for specific Personal Protective Equipment (PPE) required.

3. HOW MANY CAPSULES?

Measure the tree at chest height. If measuring the circumference, divide this number by 6 (six) to determine the number of capsules needed. If measuring the diameter, divide this number by two (2) to determine the number of capsules needed.

4. PRESSURIZING CAPSULE

Place capsule on firm flat surface and compress by pressing with bottom of foot, heel of hand or under some conditions with a plastic or rubber mallet.



5. HOW DO I DRILL?

Pre-Drill the injection site at a slight downward angle at the root flare (approximately 6" above ground level) using a clean 11/64" drill bit. Drill to a depth of 3/8" (into the healthy xylem tissue). For the Micro-mini feeder tube, see #'s 11 & 12. Disinfect drill bit and Micro mini-insertion tool prior to use on each tree.

6. HOW DEEP?

It is important that the feeder tube be set to the proper depth into the xylem. If set too deeply, flow is restricted by blockage in the heartwood; if set too shallow, leaks may occur. The feeder tubes are "beveled" cut to allow for 1/4" +/- error.

7. COMBINING CAPSULE & TUBE

Place by hand, the feeder tube's flange end with flange notch upwards into a compressed inverted capsule. Push the end of the tube flush with the internal capsule seal.

8. PLACING UNIT IN TREE

Firmly seat the beveled end of feeder tube with the attached inverted capsule into the pre-drilled injection hole. Tap the top corner of the capsule directly behind the feeder tube with a plastic mallet while supporting the capsule with the other hand. This action will simultaneously seat the feeder tube into the tree while breaking the capsule seal and releasing the material into the tree.

4/4