

7946-16

4/1/2002

1/5

# Mauget IMICIDE®

SYSTEMIC INSECTICIDE  
IN READY TO USE CAPSULES

FOR TREE INJECTION USE FOR SEASONAL CONTROL OF  
CERTAIN INSECTS ON ORNAMENTAL TREES

**ACTIVE INGREDIENT:**

Imidacloprid (110.7 mg/mL)  
1-[(6-Chloro-3-pyridinyl)methyl]-N-nitro-2-imidazolidinimine ..... 10.0%

**INERT INGREDIENTS** ..... 90.0%  
100.0%

## KEEP OUT OF REACH OF CHILDREN CAUTION

FIRST AID	
IF INHALED	<ul style="list-style-type: none"> <li>• Move person to fresh air.</li> <li>• If person is not breathing, call 911 for an ambulance. Then give artificial respiration, preferably by mouth-to-mouth if possible.</li> <li>• Call a poison control center or doctor for further treatment advice.</li> </ul>
IF ON THE SKIN OR CLOTHING	<ul style="list-style-type: none"> <li>• Take off contaminated clothing.</li> <li>• Rinse skin immediately with plenty of water for 15-20 minutes.</li> <li>• Call a poison control center or doctor for treatment advice.</li> </ul>
IF IN EYES	<ul style="list-style-type: none"> <li>• Hold eye open and rinse slowly and gently with water for 15-20 minutes.</li> <li>• Remove contact lenses, if present, after the first 5 minutes, then continue rinsing eye.</li> <li>• Call a poison control center or doctor for treatment advice.</li> </ul>
IF SWALLOWED	<ul style="list-style-type: none"> <li>• Call a poison control center or doctor immediately for treatment advice.</li> <li>• Have person sip a glass of water if able to swallow.</li> <li>• Do not induce vomiting unless told to do so by a poison control center or doctor.</li> <li>• Do not give anything by mouth to an unconscious person.</li> </ul>

**HOT LINE NUMBER**

Have the product container or label with you when calling a poison control center or doctor, or going for treatment. You may also contact 1-800-335-5053 for emergency treatment information.

**NOTE TO PHYSICIAN**

There is no specific antidote available. Treat Patient symptomatically.

Mfg. By: J.J. Mauget Co.  
Town, State: Arcadia, CA 91006  
EPA Reg. No.: 7946-16  
EPA Est. No.: 7946-CA-1

Net Contents: 25 capsules plus 25 feeder tubes per carton.  
\_\_\_\_\_ 25 capsules @ 2mL, 50 mL net, or  
\_\_\_\_\_ 25 capsules @ 3mL, 75 mL net, or  
\_\_\_\_\_ 25 capsules @ 4 mL, 100 mL net  
\_\_\_\_\_ Shipping box: 12 Cartons as above.

### PRECAUTIONARY STATEMENTS HAZARDS TO HUMANS AND DOMESTIC ANIMALS

## CAUTION

Harmful if swallowed or absorbed through the skin. Avoid contact with skin, eyes or clothing. Causes eye irritation. Wash thoroughly with soap and water after handling. Avoid breathing vapors. Remove contaminated clothing and wash before reuse.

**PERSONAL PROTECTIVE EQUIPMENT:**

Some Materials that are chemical-resistant to this product are listed below. If you want more options, follow the instructions for category C on an EPA chemical resistance category selection chart.

**APPLICATOR AND OTHER HANDLERS MUST WEAR:**

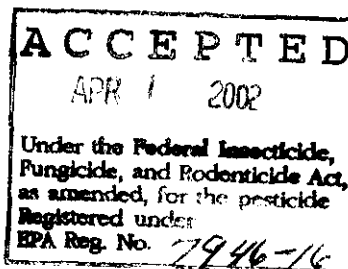
- Long-sleeved shirt and long pants
- Shoes plus socks
- Chemical resistant gloves, such as polyethylene or butyl rubber or neoprene rubber or viton
- Protective eyewear

### ENVIRONMENTAL HAZARDS:

This pesticide is highly toxic to aquatic invertebrates. Do not apply directly to water, or to areas below the mean high water mark. Do not contaminate water when disposing of equipment washwaters.

### PHYSICAL OR CHEMICAL HAZARDS:

Do not use or store near heat or open flame.



### GENERAL DIRECTIONS

Measure the tree at chest height in inches. If measuring the circumference of the tree, divide this number by six (6) to determine the number of capsules needed. If measuring the diameter of the tree (DBH), divide this number by two (2) to determine the number of capsules needed. It is preferred to apply the injector units around the tree at the root flare.

The following dosage, per capsule, is generally recommended depending on tree diameter;

- 2 ml capsules - 2 to 10 inches DBH
- 3 ml capsules - 10 to 36 inches DBH; or
- 4 ml capsules - 36 inches DBH and above

For heavier infestation and / or more resistant insects, it is recommended that 3 mL capsules or 4 mL capsules be used on trees having a DBH of 2 inches and above.

Consult the enclosed pamphlet "Directions for use and application of Mauget Micro-Injection System" for additional instructions. Applicators shall remove capsules promptly after treatment. Trees in advanced stages of insect infestations may not respond to treatment. The health of the tree and the environmental conditions will determine the rate of uptake.

### STORAGE AND DISPOSAL

Do not contaminate water, food or feed by storage or disposal.

**STORAGE:** Store capsules in an upright position, above 45°F, in a cool, dry place.

**PESTICIDE DISPOSAL:** Waste resulting from the use of this product may be disposed of on site or at an approved waste disposal facility.

**CONTAINER DISPOSAL:** Dispose of empty capsules in a sanitary landfill or by incineration if approved by State and local authorities.

### RESTRICTIONS

Do not inject trees that are less than two inches in diameter.

This product is not to be used on trees which will produce food within the year following treatment.

### RECOMMENDED TARGET INSECTS ON ORNAMENTAL TREES

- ADELGIDS
- APHIDS
- BLACK VINE WEEVIL LARVAE
- BRONZE BIRCH BORER
- COTTONWOOD LONGHORNED BORER \*
- ELM LEAF BEETLE
- EUCALYPTUS LONGHORNED BORER
- FLATHEADED BORER (including Alder Birch Borer)
- JAPANESE BEETLE
- LACEBUGS
- LEAFHOPPERS
- LEAFMINERS
- MEALYBUGS
- PINE TIP MOTH LARVAE
- PSYLLIDS (INCLUDING LERP PSYLLID)
- ROYAL PALM BUGS
- SCALE INSECTS
- THRIPS
- WHITEFLIES

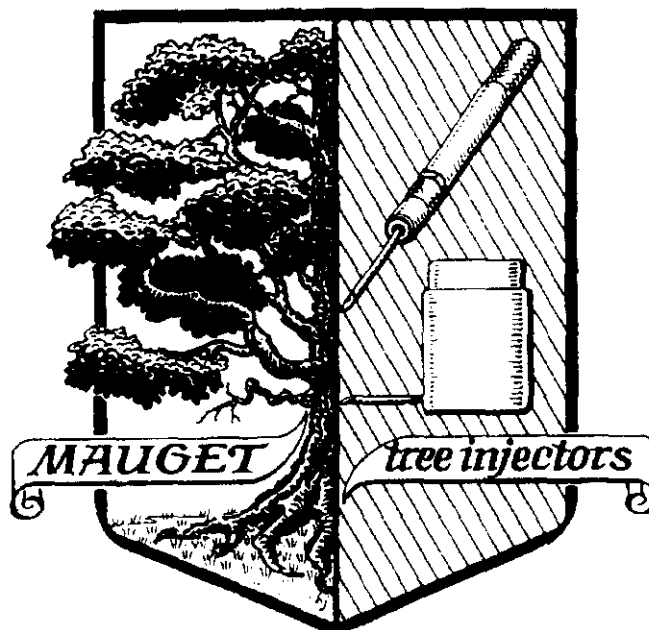
- ASIAN LONGHORNED BEETLE
- CITRUS LONGHORNED BEETLE

For use under USDA supervision.  
4 mL capsules recommended on all trees 2 inches DBH and above. See General Directions.

### NOTICE OF WARRANTY

J.J. MAUGET CO. MAKES NO WARRANTY OF MERCHANTABILITY, FITNESS FOR ANY PURPOSE OR OTHERWISE. EXPRESSED OR IMPLIED CONCERNING THIS PRODUCT OR ITS USE WHICH EXTEND BEYOND THE USE OF THE PRODUCT UNDER NORMAL CONDITIONS IN ACCORD WITH THE STATEMENTS MADE ON THIS LABEL.

*save trees*



\* Imicide is not registered in California for controlling this insect

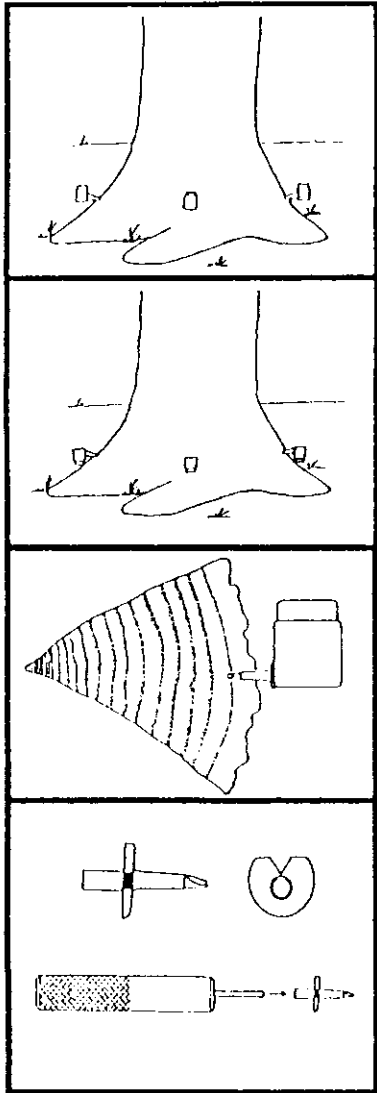
## DIRECTIONS FOR USE

IT IS A VIOLATION OF FEDERAL LAW TO USE THIS PRODUCT IN A MANNER INCONSISTENT WITH ITS LABELING.

Do not apply this product in a way that will contact workers or other persons, either directly or through drift. Only protected handlers may be in the area during application. For any requirement specific to your State or Tribe, consult the agency responsible for pesticide regulation.

### AGRICULTURAL USE REQUIREMENTS

Use this product only in accordance with its labeling and the Worker Protection Standard, 40 CFR 170. This standard contains requirements for the protection of agricultural workers on farms, forest, nurseries and greenhouses, and the handlers of agricultural pesticides. It contains requirements for training, decontamination, notification, and emergency assistance. It also contains specific instructions and exceptions pertaining to the statements on this label about personal protective equipment ( PPE ). The requirements in this box only apply to uses of this product that are covered by the Worker Protection Standard.



**9. CAPSULE POSITION**

Turn the capsule right side up to allow the material to flow through the tube into the xylem and phloem tissue in the tree

**10. REMOVAL & DISPOSAL**

Allow time for the tree to absorb all the liquid material. Turn the capsule upside down for a minute before removal. Applicators shall remove capsules promptly after treatment. Follow instructions on product label for capsule disposal.

**11. MICRO MINI-FEEDER TUBE**

For established trees with thin bark (less than 3/8" thickness) Use a 7/64" drill bit to produce a micro injection site.

**12. MICRO MINI-INSERTION TOOL**

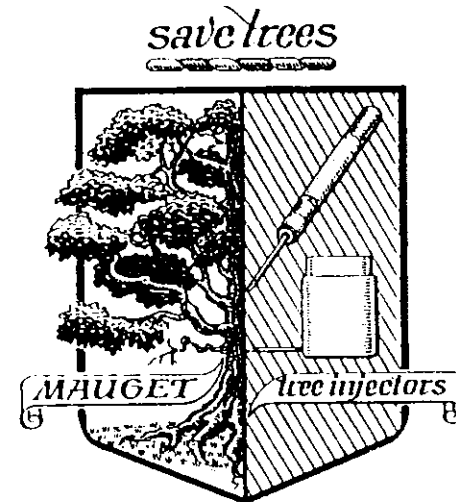
Because the 7/64" micro-injection site is so small, it is recommended that the Micro mini insertion tool (316-NAM) be used to prevent plugging of the feeder tube & insure a clear pathway to the cambium tissue. Be sure to place the tube with the notch up.

**DIRECTIONS**

for use and application of

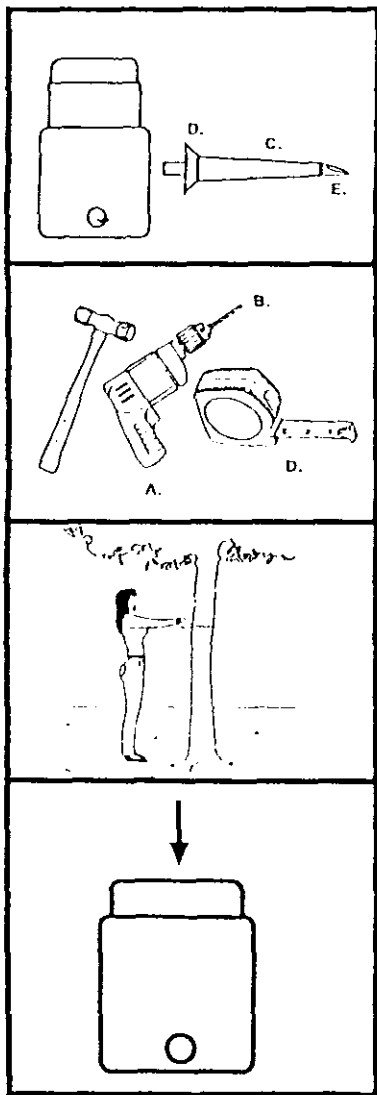
**Mauget**

**Micro-Injection system**



REFER TO PRODUCT LABEL FOR ADDITIONAL PRECAUTIONS AND LIMITATIONS ON THE USE OF THIS PRODUCT

4/5



### 1. WHAT'S THE SYSTEM?

- A)...The Maugel two piece capsule.
- B)...Insert hole.
- C)...Feeder tube.
- D)... Flanged gun-site end.
- E)... Tapered beveled end.

### 2. WHAT TOOLS ARE NEEDED?

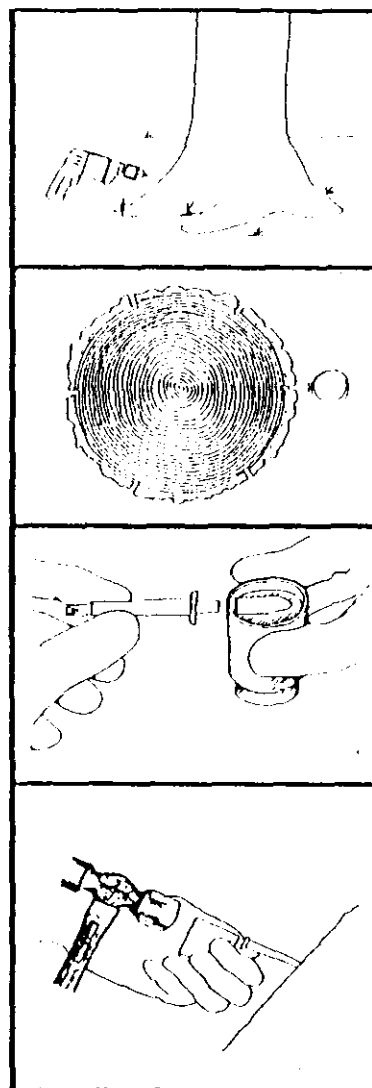
- A)... Electric Drill.
- B)... 11/64" Drill bit.
- C)... Plastic Mallet (Hammer).
- D)... Tape Measure
- E)... Consult product label for specific Personal Protective Equipment (PPE) required.

### 3. HOW MANY CAPSULES?

Measure the tree at chest height. If measuring the circumference, divide this number by 6 (six) to determine the number of capsules needed. If measuring the diameter, divide this number by two (2) to determine the number of capsules needed.

### 4. PRESSURIZING CAPSULE

Place capsule on firm flat surface and compress by pressing with bottom of foot, heel of hand or under some conditions with a plastic or rubber mallet.



### 5. HOW DO I DRILL?

Pre-Drill the injection site at a slight downward angle at the root flare (approximately 6" above ground level) using a clean 11/64" drill bit. Drill to a depth of 3/8" (into the healthy xylem tissue) For the Micro-mini feeder tube, see #'s 11 & 12. Disinfect drill bit and Micro mini-insertion tool prior to use on each tree.

### 6. HOW DEEP?

It is important that the feeder tube be set to the proper depth into the xylem. If set too deeply, flow is restricted by blockage in the heartwood ; if set too shallow, leaks may occur. The feeder tubes are "beveled" cut to allow for 1/4" +/- error.

### 7. COMBINING CAPSULE & TUBE

Place by hand, the feeder tube's flange end with flange notch upwards into a compressed inverted capsule. Push the end of the tube flush with the internal capsule seal.

### 8. PLACING UNIT IN TREE

Firmly seal the beveled end of feeder tube with the attached inverted capsule into the pre-drilled injection hole. Tap the top corner of the capsule directly behind the feeder tube with a plastic mallet while supporting the capsule with the other hand. This action will simultaneously seat the feeder tube into the tree while breaking the capsule seal and releasing the material into the tree.