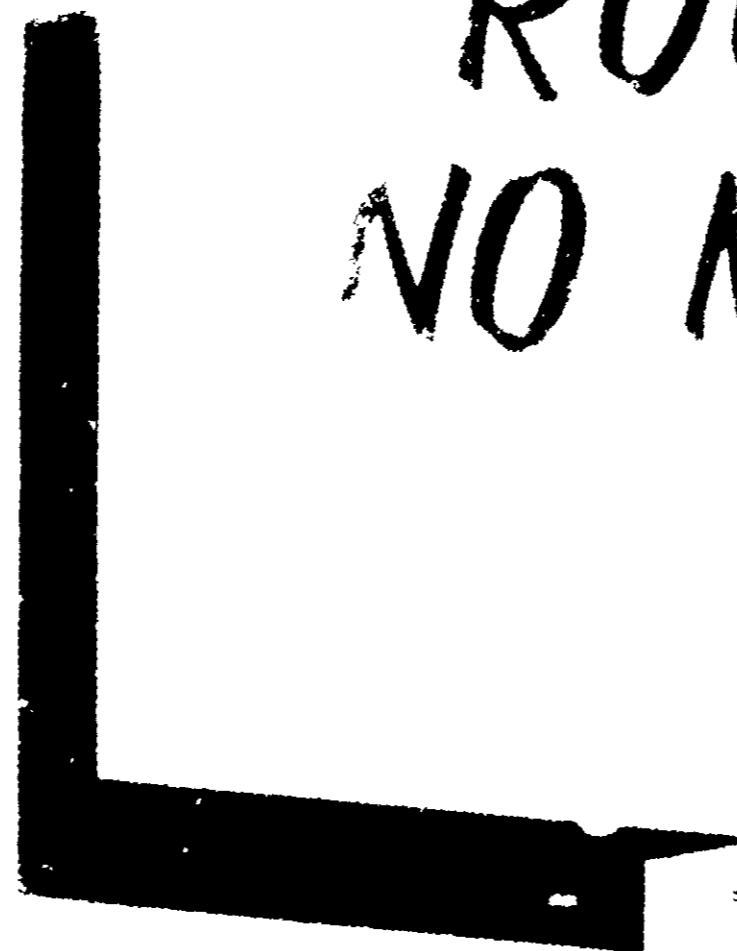


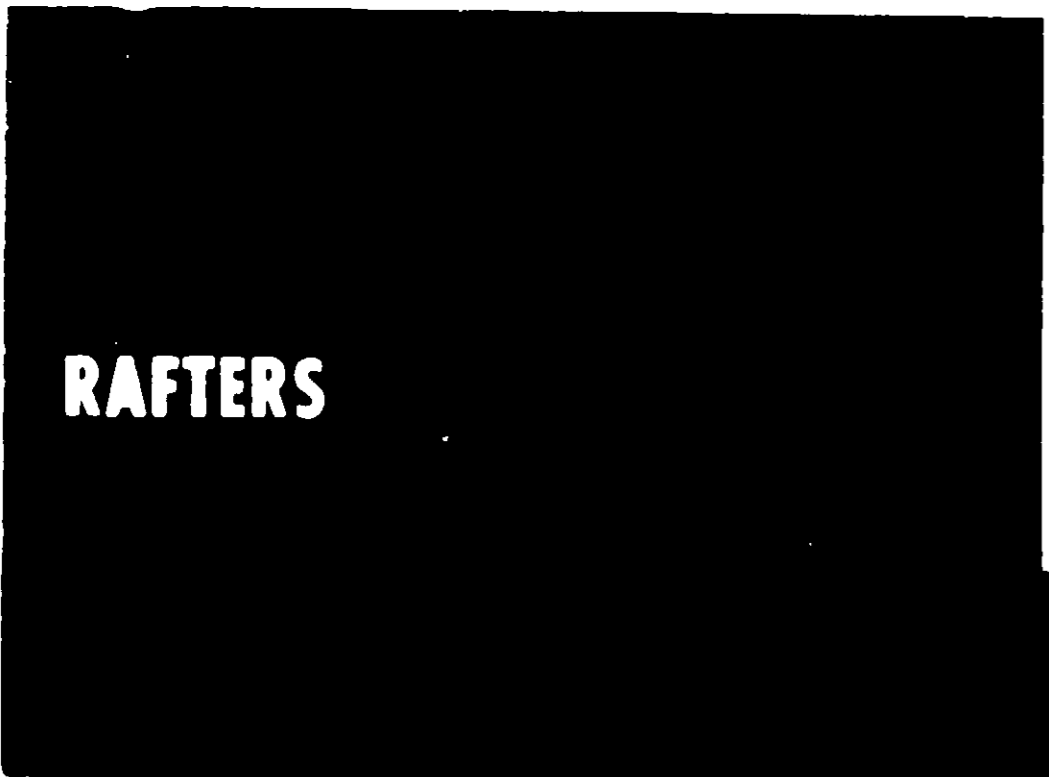
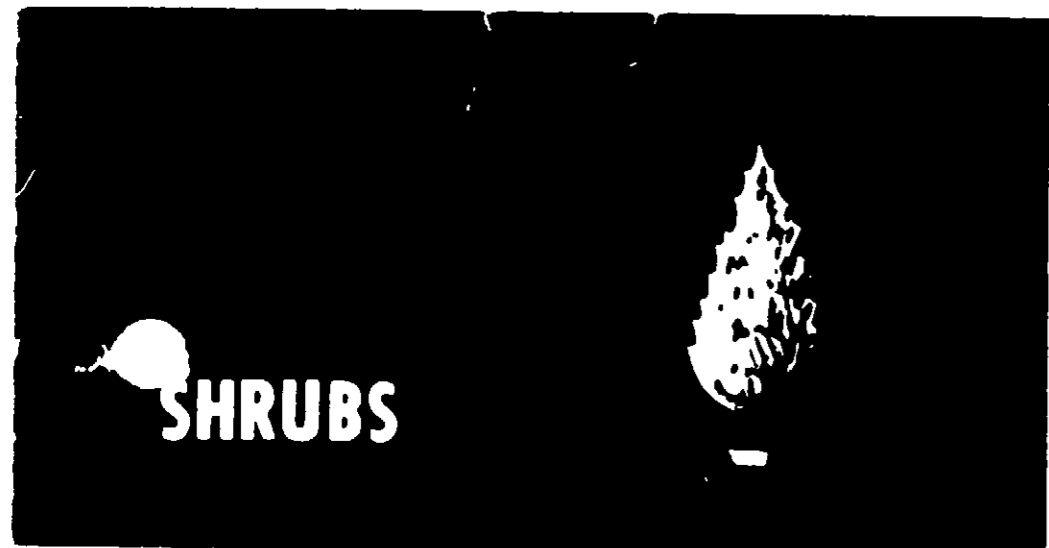
# ROOST NO MORE



ROOST NO MORE - LIQUID is not recommended for use on the exterior of buildings as it might leave a slight stain or residue.

CONTAINERS: Quart, gallon, five and fifty-five gallon.

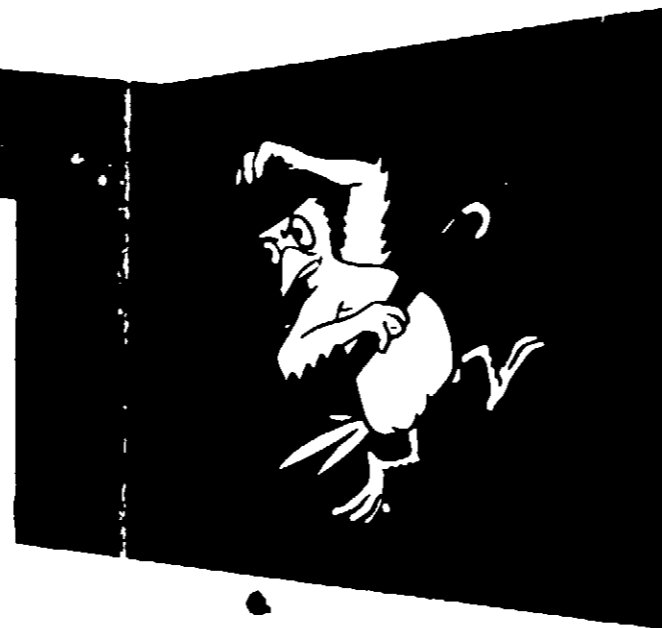
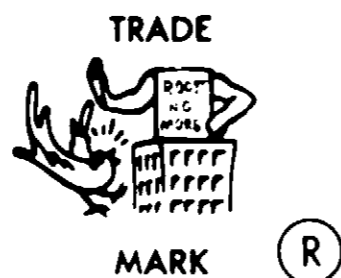
ROOST NO MORE is also available in 14 ounce Aerosol Cans and in 10 inch Cartridges.



1 GALLON

ROOST NO MORE

Bird Repellent LIQUID



STOPS BIRDS FROM LANDING AND NESTING IN TREES, SHRUBS, VINES AND ORNAMENTAL PLANTINGS.

ACTIVE INGREDIENTS:	Polyisobutylene	50.54
INERT INGREDIENTS:	Water	42.56
	Kerosene	7.90
		100.00

SHAKE WELL BEFORE USING!

CAUTION: KEEP OUT OF THE REACH OF CHILDREN

National Bird Control Laboratories

5315 WEST TOUCHY AVENUE • SKOKIE, ILLINOIS

ACCEPTED  
APR 21 1967  
7765-1  
UNITED STATES FEDERAL BUREAU OF INVESTIGATION  
FEDERAL BUREAU OF INVESTIGATION  
FEDERAL BUREAU OF INVESTIGATION  
FEDERAL BUREAU OF INVESTIGATION  
FEDERAL BUREAU OF INVESTIGATION

FOR APPLY

1. CLEAN the surface
2. BRUSH PORTS. Unless it is UNTR
3. After we suggest at a distance about 1 foot of no to double back to a
4. Spray will be position
5. On the ing our ma
6. TARP
7. IF NE
8. ALSO water has short peri

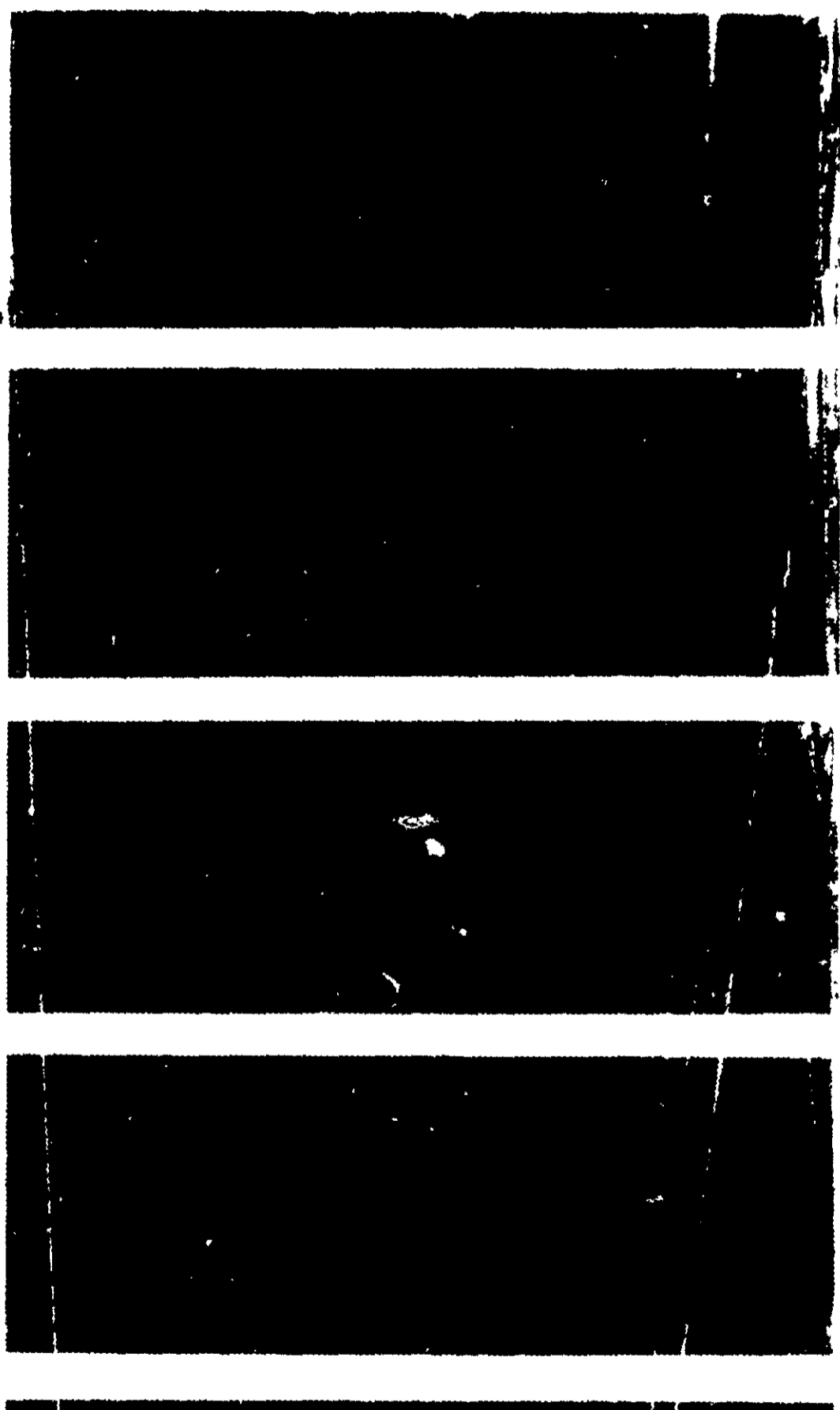
FOR

1. Can't vegetatio 40 and 10 P.S.L. at to form a branches
2. SHOU THICKEN!
3. The r Bushes, early Spr CAUTION WHILE B FLOWER
4. WEAT of outdoor r above.
5. SPRA GENSE NC AND SP LARGER what it is to cover. to extend the
6. CLEA
7. COVE

# ROOST NO MORE

## Bird Repellent LIQUID

ACCEPTED  
 APR 21 1967  
 DEPT. OF AGRICULTURE  
 DIVISION OF PEST CONTROL  
 WASHINGTON, D.C.  
 7765-1

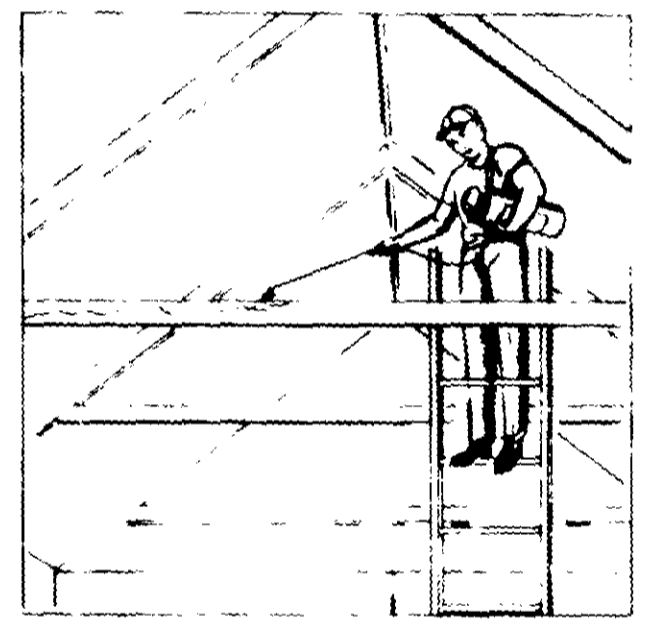


## DIRECTIONS

### FOR INTERIOR USE

#### APPLY AS TAKEN FROM THE CAN

1. CLEAN AND REMOVE ALL DIRT, NESTS, etc. from the surfaces to be treated so that a CLEAN, DRY SURFACE receives the Liquid.
2. BRUSH OR SPRAY ALL GIRDERS, STRUTS, SUPPORTS, EDGES, etc. where birds can sit or roost. Unless this procedure is followed, birds may just move to UNTREATED PARTS of the building.
3. After these areas have been cleaned, as suggested, we suggest that in the spray head gun you use a 5/16" or 3/8" nozzle at a distance of about 3 feet. We suggest a thickness of about 1/16 of an inch. In the areas that had a concentration of nests, we suggest that the thickness be increased to double (1/8"), because the birds may attempt to come back to a nest that was there.
4. Spray in such a way that the top of the beams, etc. will be coated as the applicator should be in such a position above or on a level with the spots being treated.
5. On the areas where the steel rods are a problem, we suggest that these particular areas be treated by brushing our material into crevices, versus and the areas where you find lighting fixtures be cleaned with a mild solvent.
6. TARPS should be spread to prevent materials from falling on machinery, floors, etc.
7. IF NECESSARY TO CLEAN, we suggest the use of Mineral Spirits.
8. ALSO cleaning any residue that may be left with the wood or stone areas such as sidewalks or walkways, water hosed-on will remove the tars that had fallen from the spray. However, this should be done within a very short period after the area has been treated.



### FOR EXTERIOR USE

1. Can be applied to any TREE, BUSH, SHRUB, VINE with a pump or sprayer. Will kill the tree or burn vegetation. Can be applied with any Hand or Pressure Spray Gun with a 1/2" or 3/4" nozzle. Pressure should be 40 and less than 150 P.S.I. NOTE: On tall trees, 100 to 150 feet, it is suggested that pressure be at or below 250 P.S.I. and that an advance pressure be used to report on the material that is being applied. It should be applied to form a coating to the top side of the tree, bushes or vines or light spray if it is not. NOT NECESSARY to coat branches on the bottom or sides, since these are the landing, roosting or nesting spots for the birds.
  2. SHOULD BE APPLIED TO APPROXIMATELY 1/2" THICKNESS.
  3. The most economical time to treat the Trees, Shrubs, Bushes, is in the Fall after the large majority of early Spring when the birds are easily accessible.
- CAUTION: DO NOT APPLY MATERIAL ON TREES WHILE BEARING FRUIT, FLOWERING BY BLOSSOMS OR FLOWERING VINES.**



January 1, 1977

As a result of the study of the mill in  
1975 to 1976, the results of the study  
are as follows. The mill is in a  
state of disrepair and the  
operations have been discontinued.  
The mill is in a state of  
disrepair and the operations  
have been discontinued.