

The carrier in this product is ORGANIC—dry corn cob granules saturated with insecticide solutions.

*Patented

Each Corn Cob granule has been impregnated with the proper ingredients. Result—a uniform, lightweight product that releases the ingredients evenly as the corn cob granule decomposes due to moisture and temperature.

Because of its organic nature, the corn cob granule is subject to decay when in contact with the soil and decomposes into Humus—a desirable benefit.

*Patented Process under U.S. Pat. 2,552,745

CONTAINS: Two of the most effective controls for a wide spectrum of lawn insect pests. Chlordane and Sevin are proven controls for chinch bug, sod webworm or lawn moths, ants, millipedes and beetle grubs. By removing food supply discourages moles, skunks, etc.

DIRECTIONS: For Chinch Bugs and other surface insects (above) on lawns.

1. Cut lawn close, remove clippings and water to bring chinch bugs to the surface.
2. Treat entire lawn at rate of 20 lbs. /2500 sq. ft.
3. Work material in with a coarse water spray after treatment.
4. Repeat 2 to 3 weeks later if necessary.

For Beetle Grubs and Ants

1. Best results are obtained when applied in Spring or Fall.
2. Treat entire lawn at rate of 20 lbs. /2500 sq. ft.

Medina, O. 4

HERITAGE HOUSE PRODUCTS, _____

SPREADER SETTINGS

HERITAGE HOUSE 20"	6 1/4
HERITAGE HOUSE Cyclone	6
HERITAGE HOUSE Broadcast	5
Lawn Beauty	10
Scott	6 1/2
True Temper	5

NOTE

The settings for spreaders other than HERITAGE HOUSE can only be taken as approximations. Our products have been thoroughly tested on new spreaders only. Age and condition of spreaders, speed of pushing, roughness of lawn, all effect application. Operator should carefully observe rate of application at beginning of job and make corrective adjustments of spreader openings if necessary.

WARRANTY AND LIMITATION OF DAMAGES

SEIHER warrants that this material conforms to its chemical description and is reasonably fit for the purposes stated on the label used in accordance with directions under normal conditions of use and SEIHER assumes the risk of any loss or damage which may result from such directions. SEIHER makes no other express or implied warranty, including any other express or implied warranty, of MERCHANTABILITY and no agent, distributor or retailer is authorized to make any other warranty or representation. SEIHER's liability is limited to the amount of the purchase price of the product.

CONTROL*

AUG 29

UNDER THE FEDERAL
FUNGICIDE AND
FOR ECONOMIC
DO UNDER NO.
IS ATTACHED

- * Controls Chinch Bugs, Sod Webworms, Fall Armyworms, and Leaf Hoppers with ** Sevin
- * Controls Beetle Grubs, and Ants with Chlordane

MINIMUM GUARANTEED ANALYSIS

Net Weight 20 lbs.

U.S.O.A. REG. NO. 7764-7

ACTIVE INGREDIENTS

Carbaryl (1-naphthyl N-methylcarbamate)**	2.3%
Technical Chlordane=	1.5%

INERT INGREDIENTS

Inert Ingredients	96.2%
Total	100.0%

= Equivalent to 0.9% Octa-chloro-4,7 Methanotetrahydroindane and 0.6% related compounds.

* Process patented under U. S. No. 3,252,785

** Sevin is a registered trademark of Union Carbide Corp.

CAUTION: KEEP OUT OF REACH OF CHILDREN. Harmful if swallowed. Can be irritating to eyes or skin. Avoid contact with skin, eyes, or clothing. Wash thoroughly with soap and warm water after handling. Keep children and animals off treated areas. DO NOT contaminate feed or foodstuffs.

This product is toxic to fish. DO NOT contaminate ornamental fish ponds. Keep out of lakes, streams or ponds. DO NOT contaminate water by cleaning of equipment or disposal of wastes.

Birds feeding in treated areas may be harmed.

DO NOT reuse container — destroy when empty.

HERITAGE HOUSE PRODUCTS, Diamond Shamrock Chemical Company, a unit of Diamond Shamrock Corporation — CLEVELAND, OHIO 44115

COVERS

D BAG
 CORPORATION
 11-5106
 DATED BAG

pectrum of lawn in-
bug, sod webworm
supply discourages

on lawns.
to the surface.

INSECT CONTROL

CONTROL

- * Controls Chinch Bugs, Sod Webworms, Fall Armyworms, and Leaf Hoppers with ** Sevin
- * Controls Beetle Grubs, and Ants

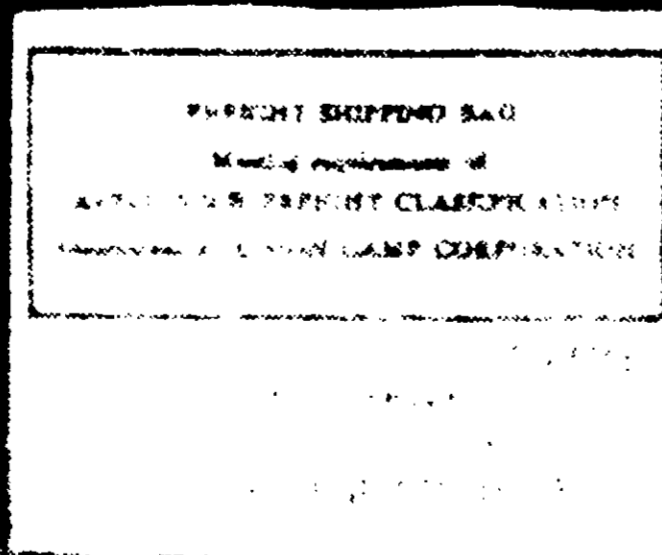
44256

na, O.

TE

is other than HERITAGE
ten as approximations
to be only stated on
Age
ing, roughness of lawn,
operate should be
on of 20 square feet
just

**COVERS
2500
SQ. FT.**



MINIMUM GUARANTEED ANALYSIS

Net Weight 20 lbs.

ACTIVE INGREDIENTS

Carbaryl (1-naphthyl N-methylcarbamate)**

Technical Chlordane =

INERT INGREDIENTS

Total

= Equivalent to 0.9% Octa-chloro-4,7 Methanoctahydroindane and 0.6% related compounds

* Process patented under U. S. No. 3,252,705

** Sevin is a registered trademark of Union Carbide Corp.

CAUTION: KEEP OUT OF REACH OF CHILDREN. Harmful if applied to eyes or skin. Avoid contact with skin, eyes, or clothing. Wash thoroughly with warm water after handling. Keep children and animals off treated areas, feed or foodstuffs.

This product is toxic to fish. DO NOT contaminate ornamental fish ponds, streams or ponds. DO NOT contaminate water by cleaning of equipment.

Birds feeding in treated areas may be harmed.

DO NOT reuse container — destroy when empty.

HERITAGE HOUSE PRODUCTS, Diamond Starrock Chemical Company, a unit of Diamond Starrock