

ACCEPTED
 1742-1
 JAN 25 1972
 UNDER THE FEDERAL INSECTICIDE
 FUNGICIDE AND RODENTICIDE ACT
 FOR ECONOMIC POISON REGISTERED
 UNDER NO. 7742-1 SUBJECT
 TO ATTACHED COMMENTS.

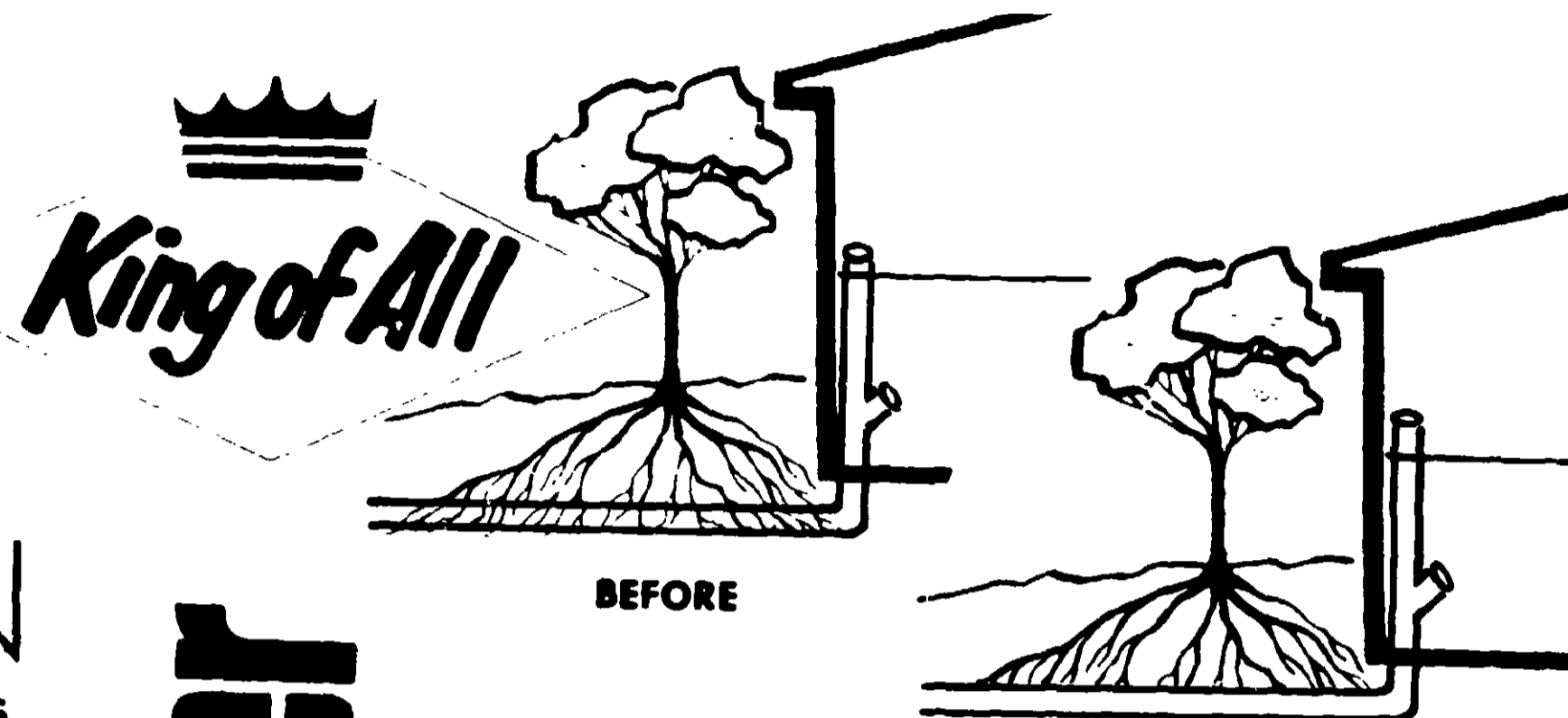
POISON

CAUSTIC SODA CAUSES BURNS
 Sodium Hydroxide 83%
 Sodium Chloride 17%

antidote: If taken internally, give vinegar, cider or lemon juice, followed by lard, olive oil or cottonseed oil; FOR EXTERNAL BURNS: Wash freely with vinegar. If vinegar is not available, wash with lots of water. Apply dressing of lard, olive oil, or cottonseed oil; FOR EYES: Wash out with 5% Boric Acid solution. CALL A PHYSICIAN.

caution: Follow instructions carefully. King-of-All Sewer Kleener forms a highly caustic solution which will burn flesh, damage linoleum, destroy clothing, aluminum, paint, and similar items. Also avoid contact with skin, eyes, mucous membrane and clothing as well. Keep your hands and face away from point of entrance. Do not, under any circumstances, dissolve the cleaner with water in a container. Dissolve it in the sewer as described in the directions.

U.S.D.A. Reg. 7742-1



BEFORE

AFTER

King of All

SEWER KLEENER

directions:

KEEPS SEWERS WORKING: King-of-All Sewer Kleener is tops for destroying fibrous roots of trees, shrubs, organic materials such as grease, lint, and hair. These are the materials that cause your sewer to run slowly or to become completely clogged.

HOW IT WORKS: King-of-All Sewer Kleener dissolves in water. The solution is highly caustic. It destroys fibrous tree roots and other organic substances. The caustic solution must, however, come in contact with the obstruction. If water is backing up on the floor, let it drain off before using King-of-All Sewer Kleener.

AMOUNT TO USE: Use 6 lbs (one can) of King-of-All Sewer Kleener for each 75 feet of sewer line (The distance between your basement drain and the point where your house sewer enters the main sewer). If your sewer is completely clogged double the above amount.

HOW TO USE IT: Pour 1/4 can of cleaner into the clean out plug (usually located at the base of the stack pipe). Next pour one gallon of hot (not boiling) water into the sewer. Repeat this process until the correct amount of King-of-All Sewer Kleener has been applied. Do not, under any circumstances, dissolve the cleaner in a container.

If you are unable to locate the clean out plug, or to open it, apply King-of-All Sewer Kleener, as described above, through the basement drain, or the breather pipe in the lawn.

King-of-All Sewer Kleener may be applied through the toilet bowl. If you must use this method DO NOT permit the cleaner to stand in the bowl. The heat, generated by the cleaner, may crack the bowl. Flush the toilet and immediately pour 1/4 can of the cleaner into the bowl while the water is running. Repeat the process until the correct amount of cleaner has been applied. Do not use the sewer for six (6) hours. It is best to apply King-of-All Sewer Kleener just before retiring.

quick, easy way
 to keep sewers
 free-running

King of All

Sewer Kleener
 with
ROOT DESTROYER

ACTIVE INGREDIENTS Sodium Hydroxide Caustic Soda 83%
 INERT INGREDIENTS 17%
 NET WEIGHT 6 LBS

KEEP OUT OF REACH
DANGER
 Causes severe burns—may be fatal
 statement and other required warn.
 CALL A PHYSICIAN
READ DIRECTIONS CAREFULLY

quick, easy way
to keep sewers
free-running

King of All

Sewer Kleener
with

ROOT DESTROYER

ACTIVE INGREDIENTS Sodium Hydroxide Caustic Soda 83%

INERT INGREDIENTS 17

NET WEIGHT 6 LBS.

KEEP OUT OF REACH OF CHILDREN

DANGER  **POISON**

Causes severe burns—may be fatal if swallowed. See antidote statement and other required warning statements on back panel. CALL A PHYSICIAN AT ONCE.

READ DIRECTIONS CAREFULLY BEFORE USING



A FAMOUS ROYAL FAMILY OF SUPERIOR
QUALITY HOUSEHOLD CLEANERS

We invite you to try our other KING-of-ALL
Kleeners. You won't be sorry.

Since 1930, KING-of-ALL KLEENERS
have met the exacting requirements of home
owners who buy superior quality cleaners.
And, remember, KING-of-ALL KLEENERS
are sold on a money back guarantee. They
are sold by leading stores everywhere.

KING-OF-ALL ENZYME ACTIVATOR — Restores
nature's bacterial activity of decomposition in your septic
tank or cesspool.

KING-OF-ALL DRAIN KLEENER — Dissolves hair and
lint, liquefies grease up to 10 times faster. Use regularly
in sink, laundry and lavatory drains. Odorless. Harmless
to septic tanks.

KING-OF-ALL SEPTIC TANK KLEENER — Easy to
apply—just pour the cleaner into your toilet bowl—
contains a chemical that dissolves septic tank sludge
and aids bacterial action all in one package—there's
nothing else to buy.

NU-BOL, KING-OF-ALL BOWL KLEENER — A neces-
sity for fastidious homemakers. Helps toilets keep them-
selves clean. Protects, cleans, deodorizes in minutes.
Light rose scent.

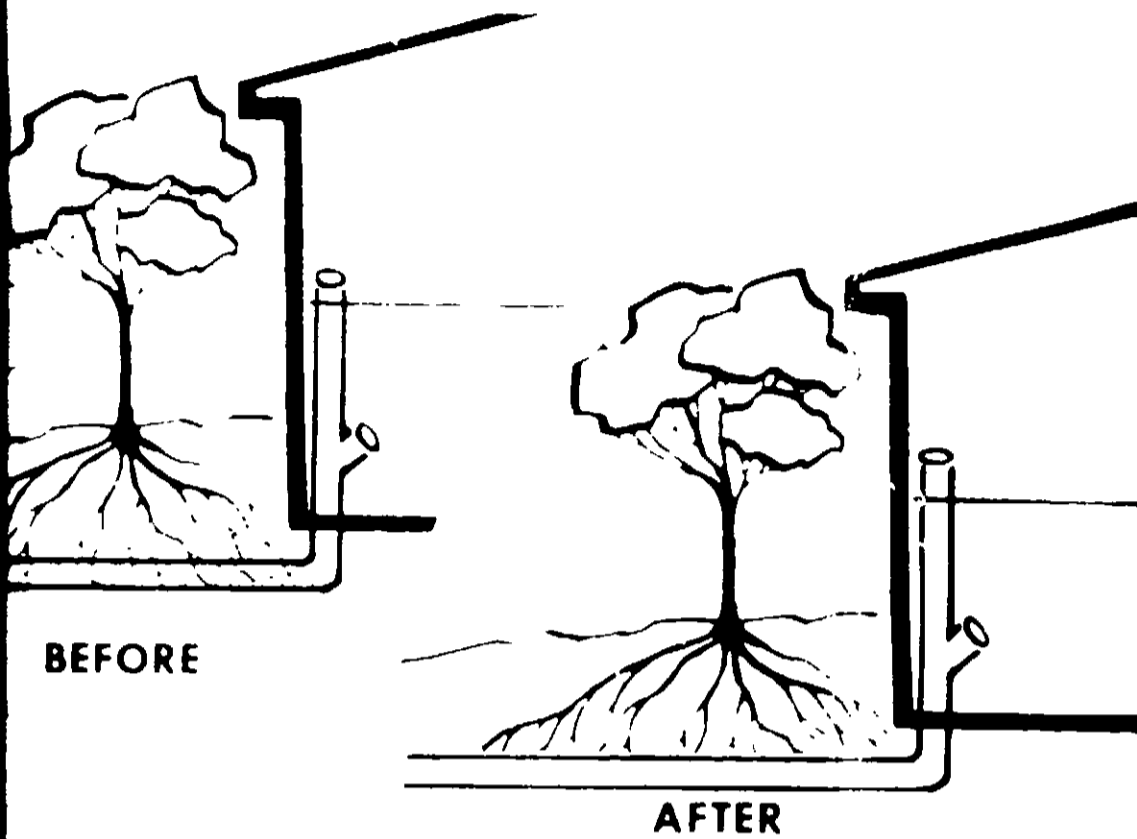
KING-OF-ALL COMMERCIAL DRAIN KLEENER —
Specifically designed and developed to liquefy grease in
quantity. Dissolves hair, lint and other organic ma-
terials. For restaurants, shops and homes. Regular ap-
plication is recommended.

MANUFACTURED BY

KING MANUFACTURING COMPANY

FLINT, MICHIGAN 48508

Manufacturers of King-of-All: Septic Tank, Sewer, Drain
Pipe, Bowl, and Commercial Drain Kleeners since 1930



BEFORE

AFTER

Directions:

SEWERS WORKING - If a sewer is blocked, it is necessary to call a plumber. However, if the sewer is only partially blocked, it may be possible to clear it with King of All. This is done by pouring a cupful of King of All into the sewer opening. The product will travel down the pipe and destroy the roots. The sewer will then be clear and working again.

WORKS - King of All works on all types of roots, including those of trees, shrubs, and weeds. It also works on the roots of the sewer pipe itself. It is safe for the pipe and will not damage it. It is also safe for the surrounding soil and vegetation.

HOW TO USE - King of All is used by pouring a cupful of the product into the sewer opening. The product will travel down the pipe and destroy the roots. The sewer will then be clear and working again.

USE IT - King of All is used by pouring a cupful of the product into the sewer opening. The product will travel down the pipe and destroy the roots. The sewer will then be clear and working again.

**quick, easy way
to keep sewers
free-running**

King of All

**Sewer Kleener
with
ROOT DESTROYER**

**ACTIVE INGREDIENTS: Sodium Hydroxide (Caustic Soda) 83%,
INERT INGREDIENTS 17%
NET WEIGHT 6 LBS.**

**KEEP OUT OF REACH OF CHILDREN
DANGER POISON**
Causes severe burns may be fatal if swallowed. See antidote
statement and other required warning statements on back panel.
CALL A PHYSICIAN AT ONCE
READ DIRECTIONS CAREFULLY BEFORE USING



A FAMOUS ROYAL
QUALITY PRODUCT

We invite you to try
Kleeners. You won't

Since 1930, KING
have met the exact
owners who buy s
And remember, KI
are sold on a mon
are sold by leading

KING-OF-ALL ENZY -
nature's softener of dirt
tank or cesspool

KING-OF-ALL DRAIN -
antifoulant, grease up
rinsing laundry or filling
reservoir tanks

KING-OF-ALL SEPTIC -
applies to all types of
septic tanks, cesspools,
and holds that not only
nothing is lost, but

NU-BOL, KING-OF-ALL -
antifoulant, grease up
sewer lines. For more
information, see

KING-OF-ALL COMME -
Specialty product for
cleaning up grease, oil,
tar, and other stubborn
deposits. For more
information, see

MANU
KING MANUFAC
FLINT M