

Reg no: 7627-26

PM-15

193

US ENVIRONMENTAL PROTECTION AGENCY OFFICE OF PESTICIDES PROGRAMS REGISTRATION DIVISION (TS-767) WASHINGTON, DC 20460  <b>NOTICE OF PESTICIDE:</b> <input type="checkbox"/> REGISTRATION <input type="checkbox"/> REREГИSTRATION <i>(Under the Federal Insecticide, Fungicide,          and Rodenticide Act, as amended)</i>	EPA REGISTRATION NO. 7627	DATE OF ISSUANCE JUN 27 1990
	TERM OF ISSUANCE	
	NAME OF PESTICIDE PRODUCT	

NAME AND ADDRESS OF REGISTRANT (Include ZIP code)

*160/242752  
18/2*

**NOTE:** Changes in labeling formula differing in substance from that accepted in connection with this registration must be submitted to and accepted by the Registration Division prior to use of the label in commerce. In any correspondence on this product always refer to the above U.S. EPA registration number.

On the basis of information furnished by the registrant, the above named pesticide is hereby Registered/Reregistered under the Federal Insecticide, Fungicide, and Rodenticide Act.

A copy of the labeling accepted in connection with this Registration/Reregistration is returned herewith.

Registration is in no way to be construed as an indorsement or approval of this product by this Agency. In order to protect health and the environment, the Administrator, on his motion, may at any time suspend or cancel the registration of a pesticide in accordance with the Act. The acceptance of any name in connection with the registration of a product under this Act is not to be construed as giving the registrant a right to exclusive use of the name or to its use if it has been covered by others.

*The product is...*  
*provided that you...*

**BEST AVAILABLE COPY**

ATTACHMENT IS APPLICABLE

SIGNATURE OF APPROVING OFFICIAL	DATE
---------------------------------	------

*Hetero 6-18-90*

3. Please provide the following Product Chemistry Data:

- a. Discussion of Formation of (Unintentional) Ingredients - brief description of impurities formed during the manufacturing/formulation process, in packaging, or during storage. If you do not expect any impurities during these stages, please so state.
- c. On the Data Requirement Listing for the Owner Submission Method of Support you must report all series 63 data. For any data not applicable, please so state and provide reasons.

4. Submit five (5) copies of your final printed labeling before you release the product for shipment. Refer to the A-79 Enclosure for a further description of final printed labeling.

If these conditions are not complied with, the registration will be subject to cancellation in accordance with FIFRA sec. 6(e). Your release for shipment of the product constitutes acceptance of these conditions.

A stamped copy of the label is enclosed for your records.

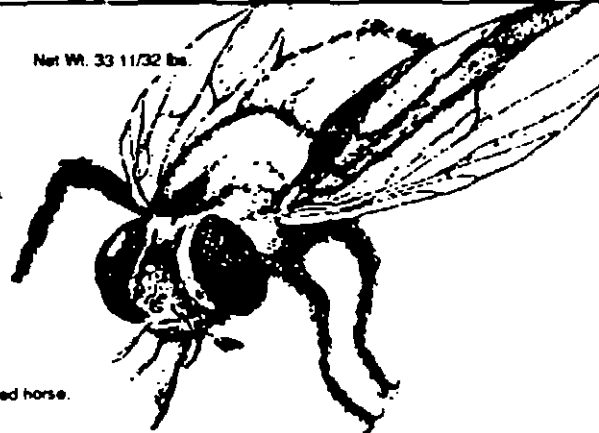
George T. LaRocca  
Product Manager 15  
Insecticide-Rodenticide Branch  
Registration Division (H7505C)

**BEST AVAILABLE COPY**

**STOCKADE  
STOCKADE  
STOCKADE  
STOCKADE**

Net Wt. 33 11/32 lbs.

# Fly Control for Horses Block with Rabon® Oral Larvicide



To prevent the development of horn flies, face flies, house flies and stable flies in the manure of the treated horse.

**ACTIVE INGREDIENT**

Tetrachlorophos..... 2-chloro-1-(2,4,5-trichlorophenyl) vinyl dimethyl phosphate..... 0.632%

**INERT INGREDIENTS\***

..... 99.368%

\*Refers only to ingredients which are not larvicidal

Total..... 100.00%

**GUARANTEED ANALYSIS**

Crude protein, minimum .....	8.00%
Crude fat, minimum .....	0.50%
Crude fiber, maximum .....	5.00%
Calcium (Ca), minimum .....	7.50%
Calcium (Ca), maximum .....	8.50%
Phosphorus (P), minimum .....	5.00%
Salt (NaCl), minimum .....	10.00%
Salt (NaCl), maximum .....	12.00%
Magnesium (Mg), minimum .....	0.50%
Iodine (I), minimum .....	0.0015%
Selenium (Se), minimum .....	0.0005%
Vitamin A, minimum IU units/lb. ....	30,000
Vitamin D3, minimum IU units/lb. ....	7,500
Vitamin E, minimum IU units/lb. ....	75

**FEED INGREDIENTS**

Soybean meal, dried cane molasses, meat & bone meal, corn distillers dried grains with solubles, soybean mill feed, yeast culture, monocalcium phosphate, dicalcium phosphate, defluorinated phosphate, soft rock phosphate, salt, magnesium mica, calcium carbonate, iron oxide, calcium iodate, sodium selenite, zinc oxide, magnesium oxide, copper sulfate, cobalt carbonate, manganous oxide, ferrous carbonate, vitamin A supplement, d-activated animal sterol (source of vitamin D<sub>3</sub>), vitamin E supplement, lignin sulfonate, cane molasses, natural and artificial flavor.

**KEEP OUT OF REACH OF CHILDREN  
CAUTION**

**PRECAUTIONARY STATEMENTS  
HAZARDS TO HUMANS**

CAUTION: Keep out of reach of children. Harmful if swallowed. Avoid contact with skin and eyes. Avoid breathing dust. Wash thoroughly with soap and water after handling and before eating or smoking. If in eyes, wash with plenty of water. If irritation persists, get medical attention. Wear long-sleeved shirt and pants; chemical resistant gloves; shoes and socks for protection when handling.

**ENVIRONMENTAL HAZARDS**

This product is toxic to fish. Do not apply directly to water. Do not contaminate water by cleaning of equipment or disposal of wastes.

**STORAGE & DISPOSAL**

STORAGE: Do not store next to herbicides. Do not contaminate water, food, or feed by storage or disposal. Store in a dry place in original container.

CONTAINER DISPOSAL: Completely empty bag by shaking and tapping sides and bottom to loosen clinging particles.

Empty residue into mineral feed bins. Then dispose of bags in a sanitary landfill or by incineration if allowed by State and local authorities, by burning. If burned stay out of smoke. Wastes resulting from the use of this product may be disposed of on site or at an approved waste disposal facility.

**DIRECTIONS FOR USE:**

It is violation of Federal Law to use this product in a manner inconsistent with this labeling.

Allow free choice to horses. They should consume an average of 1.0 ounce of Fly Control Block for horses per 250 pounds of body weight per day, which is the equivalent of 4 ounces for a 1000 lb horse daily. This will supply the recommended average daily intake of 70 mgs. RABON Oral Larvicide per 100 pounds of body weight. Horses should not be starved for minerals before initiation of the Fly Control Block, omit all salt from other feed after starting the use of this block. Do not feed other free choice salt or mineral containing salt. One block should last a horse for approximately 130 days, or 4 to 5 horses for 1 month.

If consumption of STOCKADE Fly Control Block for horses is above 1.0 ounce per 250 lbs. of body weight per day, reduce the number of feed locations or relocate. If consumption is below 1.0 ounces per 250 lbs. of body weight per day, increase the number of feed locations. Start feeding STOCKADE Fly Control for horses early in the spring before flies begin to appear, and continue feeding throughout the summer and into the fall.

This block prevents the development of horn flies, face flies, house flies and stable flies in the manure of treated horse, but is not effective against existing adult flies. When starting a feeding program during the fly season, it may be necessary to use other control measures to reduce the population of existing adult flies. Supplemental fly control measures may be needed in and around horse lots and buildings to control adult house flies and stable flies which can breed not only in horse manure but in other decaying vegetable matter or sludge on the premises.

In order to achieve optimum fly control, Fly Control for horses should be used in conjunction with other good management and sanitation practices.



RABON® is the registered trademark of Shell Oil Company. Patent 3,102,842

**HARVEST BRANDS, INC. Pittsburg, Kansas 66762**

EPA Reg. No. 7627

EPA Est. No. 07627-KC-01

614

**HARVEST**

REGISTERED  
with COMMENTS  
in EPA Letter Dated

Under the Federal Insecticide,  
Fungicide and Rodenticide Act,  
attended, for the reasons  
specified on the label.  
Registered under EPA Act No. 7627-26