

7627-22

01/05/2000

1 of 3



U.S. ENVIRONMENTAL PROTECTION AGENCY
Office of Pesticide Programs
Registration Division (H7505C)
401 M St., S.W.
Washington, D.C. 20460

EPA Reg Number:
7627-22

Date of Issuance:
JAN 5 2000

**NOTICE OF PESTICIDE
Reregistration**

Term of Issuance:
Reregistration

Name of Pesticide Product:
Stockade Fly Control Block

(under FIFRA, as amended)

Name and Address of Registrant (include ZIP Code):

**Mr. Dick Kelly
Harvest Brands, Inc.
P.O. Box 46
Pittsburg, Kansas 66762**

Note: Changes in labeling differing in substance from that accepted in connection with this registration must be submitted to and accepted by the Registration Division prior to use of the label in commerce. In any correspondence on this product always refer to the above EPA registration number.

On the basis of information furnished by the registrant, the above named pesticide is hereby registered/reregistered under the Federal Insecticide, Fungicide and Rodenticide Act.

Registration is in no way to be construed as an endorsement or recommendation of this product by the Agency. In order to protect health and the environment, the Administrator, on his motion, may at any time suspend or cancel the registration of a pesticide in accordance with the Act. The acceptance of any name in connection with the registration of a product under this Act is not to be construed as giving the registrant a right to exclusive use of the name or to its use if it has been covered by others.

Based on your response to the Reregistration eligibility Documents, EPA has reregistered the product listed above. This action is taken under the authority of section 4 (g)(2)(c) of the Federal Insecticide, Fungicide, and Rodenticide Act, as amended. Registration under this section does not eliminate the need for control reassessment of pesticides. EPA may require submission of data at anytime to maintain the registration of your product. with regards to labeling, you must make the labeling changes listed below:

1. Based on the Acute Toxicology profile for this product you must include a heading of "First Aid" or "Statements of Practical Treatment" and the First Aid statements should read as follows:

FIRST AID

"IF SWALLOWED: Call a physician or Poison Control Center immediately for treatment advice. Have person sip a glass of water if able to swallow. Do not induce vomiting unless told by poison control center or doctor.

IF ON SKIN: Take off contaminated clothing. Rinse skin immediately with plenty of water for 15-20 minutes. Call a poison control center or doctor for treatment

IF ON EYES: Hold eye open and rinse slowly and gently with water for 15-20 minutes. Remove contact lenses, if present, after the first five minutes, then continue rinsing. Call a poison control center or a doctor for treatment advice."

2. The following statements should be placed near the First Aid Statements:

"In case of emergency call (insert toll-free emergency number)."

Signature of Approving Official:

Date:

JAN 5 2000

"Have the product container or label with you when calling a poison control center or doctor or going for treatment."

- 3. The human precautionary statements must be revised to read as follows:
 "Harmful if swallowed or absorbed through skin. Causes moderate eye irritation. Avoid contact with eyes, skin or clothing. Prolonged or frequently repeated skin contact may cause allergic reaction to some individuals.

Personal Protective Equipment (PPE)

Mixers and Handlers must wear:

- long-sleeved shirt and long pants
- shoes and socks
- chemical resistant gloves."

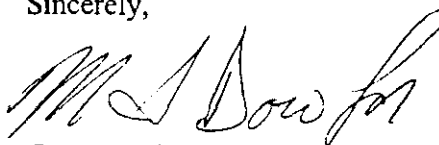
- 4. A "User Safety Requirements" statement must be added to the label and should read as follows:
 "Follow manufacturer's instructions for cleaning/maintaining PPE. If no such instructions for washables, use detergent and hot water. Keep and wash PPE separately from other laundry."

- 5. A "User Safety Recommendations" statement must be added to the label and should read as follows:
 Users should wash hands before eating, drinking, chewing gum, using tobacco or using the toilet. Users should remove clothing immediately if pesticide gets inside. Then wash thoroughly and put on clean clothing. Users should remove PPE immediately after handling this product. Wash the outside of gloves before removing. As soon as possible, wash thoroughly and change into clean clothing."

- 6. While this product is toxic to fish, it is not necessary to maintain the statements: "Do not apply directly to water. Do not contaminate water by cleaning of equipment or disposal of wastes."

Enclosed, please find a copy of your most recently submitted label stamped "Accepted with Comments." Please submit two (2) copies of your final printed label before you release the product for shipment. I'll be happy to answer any questions you may have regarding this issue.

Sincerely,



George LaRocca
Product Manager 13
Insecticide Branch
Registration Division (7505C)

enclosure
md:a:7627-22

Signature of Approving Official:	Date: JAN 5 2000
----------------------------------	-------------------------

Best Available Copy

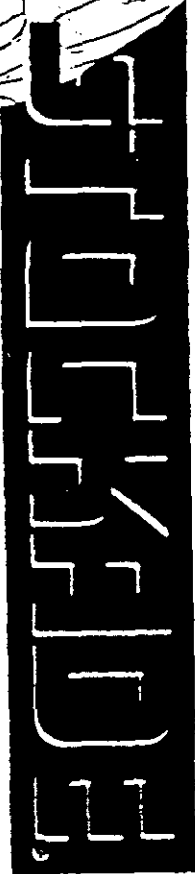
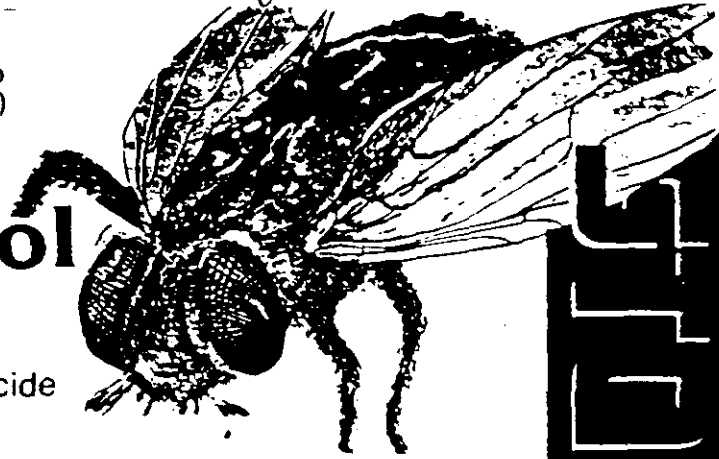
3 of 3

STOCKADE
STOCKADE
STOCKADE
STOCKADE

Net Wt. 33.33 lb
(15.12kg)

Fly Control Block

with Rabon[®] Oral Larvicide



To prevent the development of horn flies, face flies, house flies and stable flies in the manure of the treated cattle

ACTIVE INGREDIENT		
Tetrachlorvinphos	(Z) 2-chloro-1-(2,4,5-trichlorophenyl) vinyl dimethyl phosphate	0.30%
INERT INGREDIENTS*		99.70%
*Refers only to ingredients which are not larvicidal		Total 100.00%

GUARANTEED ANALYSIS

Crude protein	minimum	14.00%	Magnesium (Mg)	minimum	1.50%
Crude fat	minimum	0.50%	Copper (Cu)	minimum	800ppm
Crude fiber	maximum	5.00%	Selenium (Se)	minimum	200ppm
Calcium (Ca)	minimum	4.50%	Zinc (Zn)	minimum	2700ppm
Calcium (Ca)	maximum	5.50%	Iodine (I)	minimum	2500ppm
Phosphorus (P)	minimum	1.00%	Vitamin A	minimum IU units/lb	30,000
Salt (NaCl)	minimum	18.00%	Vitamin D3	minimum IU units/lb	7,500
Salt (NaCl)	maximum	21.00%			

FEED INGREDIENTS

Soybean meal, cottonseed meal, dried cane molasses, corn distillers dried grains with solubles, magnesium limestone, salt, calcium carbonate, monocalcium phosphate, dicalcium phosphate, soft rock phosphate, grain sorghum, magnesium oxide, iron oxide, manganese oxide, zinc oxide, ferrous carbonate, calcium iodate, cobalt carbonate, sodium selenite, copper sulfate, vitamin A supplement, vitamin D3 supplement, mineral oil, artificial and natural flavors, and cane molasses.

KEEP OUT OF REACH OF CHILDREN CAUTION

PRECAUTIONARY STATEMENTS HAZARDS TO HUMANS

CAUTION: Keep out of reach of children. Harmful if swallowed. Avoid contact with skin and eyes. Avoid breathing dust. Wash thoroughly with soap and water after handling and before eating or smoking. If in eyes, wash with plenty of water. If irritation persists, get medical attention. Wear long-sleeved shirt and pants, chemical resistant gloves, shoes and socks for protection when handling. This product may cause skin sensitization in certain individuals.

ENVIRONMENTAL HAZARDS

This product is toxic to fish. Do not apply directly to water. Do not contaminate water by cleaning of equipment or disposal of wastes.

STORAGE & DISPOSAL

STORAGE: Do not store next to herbicides. Do not contaminate water, food, or feed by storage or disposal. Store in a dry place in original container.
CONTAINER DISPOSAL: Completely empty bag by shaking and tapping sides and bottom to loosen clinging particles. Empty residue into mineral feeders. Then dispose of bags in a sanitary landfill or by incineration if allowed by State and local authorities, by burning, if burned stay out of smoke. Wastes resulting from the use of this product may be disposed of on site or at an approved waste disposal facility.

DIRECTIONS FOR USE:

It is violation of Federal Law to use this product in a manner inconsistent with this labeling.

Allow free choice to cattle. Cattle should consume an average of 0.8 ounces of the Fly Block per 100 pounds of body weight per day, which is equivalent to 8 ounces for a 1000 lb. animal daily. This will supply the recommended average daily intake of 70 mgs. RABON[®] Oral Larvicide per hundred pounds of body weight. Animals should not be starved for minerals before initiation of the Stockade Fly Block with RABON[®] program but omit all salt from other feed after the program is started. Do not feed other free choice sources of salt or mineral containing salt in any form. Allow one block for each 10 head of cattle and place near watering and loafing areas. Put out no more than two weeks supply at a time. If consumption of Stockade Fly Control Block with RABON[®] is above 0.8 ounce per 100 lbs. of body weight per day, reduce the number of feed locations or relocate. If consumption is below 0.8 ounces per 100 lbs. of body weight per day, increase the number of feed locations. Start feeding Stockade Fly Control Block with RABON[®] early in the spring before flies begin to appear, and continue feeding throughout the summer and into the fall.

Stockade Fly Control with RABON[®] may be fed up to slaughter and to lactating dairy cows. Stockade Fly Control Block with RABON[®] prevents the development of horn flies, face flies, house flies and stable flies in the manure of treated cattle, but is not effective against existing adult flies. When starting a feeding program during the fly season, it may be necessary to use other control measures to reduce the population of existing adult flies.

Supplements: fly control measures may be needed in and around cattle lots and buildings to control adult house flies and stable flies which can breed not only in cattle manure but in other decaying vegetable matter or silage on the premises. In order to achieve optimum fly control Stockade Fly Control Block with RABON[®] should be used in conjunction with other good management and sanitation practices.

Net Wt. 33.33 lb
(15.12kg)

ACCEPTED
with COMMENTS
in EPA Letter Dated

EPA Reg. No. 1627-22
EPA Est. No. 07520-KS-01

JAN 5 2000

Under the Federal Insecticide,
Fungicide, and Rodenticide Act
as amended, for the pesticide
registered under EPA Reg. No.

7627-22



613