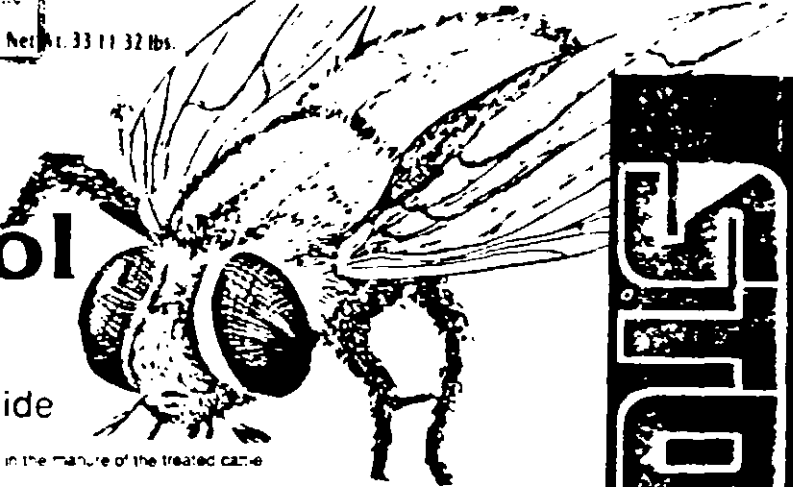


STOCKADE
STOCKADE
STOCKADE
STOCKADE

Fly Control Block

with Rabon[®] Oral Larvicide



STOCKADE

To prevent the development of horn flies, face flies, house flies and stable flies in the manure of the treated cattle

ACTIVE INGREDIENT

Tetrahydrophosphos 2-chloro-1-(2,4,5-trichlorophenyl) vinyl dimethyl phosphite.....0.30%

INERT INGREDIENTS*.....99.70%

*Refers only to ingredients which are not toxic

Total.....100.00%

GUARANTEED ANALYSIS

Crude protein, minimum.....	14.00%
Crude fat, minimum.....	0.50%
Crude fiber, maximum.....	5.00%
Calcium (Ca), minimum.....	4.50%
Calcium (Ca), maximum.....	5.50%
Phosphorus (P), minimum.....	1.00%
Salt (NaCl), minimum.....	16.00%
Salt (NaCl), maximum.....	21.00%
Magnesium (Mg), minimum.....	1.50%
Iodine (I), minimum.....	0.002%
Vitamin A, minimum IU units.....	31,000
Vitamin D3, minimum IU units.....	7,500

FEED INGREDIENTS

Soybean meal, cottonseed meal, dried cane molasses, meat and bone meal, corn distillers dried grains with solubles, dehydrated alfalfa meal (preserved with ethoxyquin), magnesium limestone, salt, calcium carbonate, monocalcium phosphate and dicalcium phosphate, soft rock phosphate, grain sorghum, magnesium oxide, iron oxide, ferrous sulfate, manganese oxide, zinc oxide, ferrous carbonate, calcium iodate, cobalt carbonate, sodium selenite, copper sulfate, cobalt sulfate, vitamin A supplement, d-activated animal steroid (source of vitamin D3), mineral oil, sulfuric acid and natural flavors, and cane molasses

KEEP OUT OF REACH OF CHILDREN CAUTION

PRECAUTIONARY STATEMENTS HAZARDS TO HUMANS

CAUTION: Keep out of reach of children. Harmful if swallowed. Avoid contact with skin and eyes. Avoid breathing dust. Wash thoroughly with soap and water after handling and before eating or smoking. If in eyes, wash with plenty of water. If irritation persists, get medical attention. Wear long sleeved shirt and pants, chemical resistant gloves, shoes and socks for protection when handling.

ENVIRONMENTAL HAZARDS

This product is toxic to fish. Do not apply directly to water. Do not contaminate water by cleaning of equipment or disposal of wastes. Do not use manure droppings on land where food crops are to be grown during the current growing season.

STORAGE & DISPOSAL

STORAGE: Do not store next to herbicides. Do not contaminate water, food, or feed by storage or disposal. Store in a dry place in original container.
CONTAINER DISPOSAL: Completely empty bag by shaking and tapping sides and bottom to loosen clinging particles. Empty residue into mineral feeders. Then dispose of bags in a sanitary landfill or by incineration if allowed by State and local authorities, by burning. If burned stay out of smoke. Wastes resulting from the use of this product may be disposed of on site or at an approved waste disposal facility.

DIRECTIONS FOR USE:

It is violation of Federal Law to use this product in a manner inconsistent with this labeling.
Allow free choice to cattle. Cattle should consume an average of 0.8 ounces of the Fly Block per 100 pounds of body weight per day, which is equivalent to 8 ounces for a 1000 lb. animal daily. This will supply the recommended average daily intake of 70 mgs. RABON Oral Larvicide per hundred pounds of body weight. Animals should not be starved for minerals before initiation of the Stockade Fly Block with RABON program but OMIT all salt from other feed after the program is started. Do not feed other free choice sources of salt or minerals containing salt in any form. Allow one block for each 10 head of cattle and place near watering and loafing areas. Put out no more than two weeks supply at a time.
If consumption of Stockade Fly Control Block with RABON is above 0.8 ounce per 100 lbs. of body weight per day, reduce the number of feed locations or relocate. If consumption is below 0.8 ounces per 100 lbs. of body weight per day, increase the number of feed locations. Start feeding Stockade Fly Control Block with RABON early in the spring before flies begin to appear, and continue feeding throughout the summer and into the fall.
Stockade Fly Control with RABON may be fed up to slaughter and to lactating dairy cows.
Stockade Fly Control Block with RABON prevents the development of horn flies, face flies, house flies and stable flies in the manure of treated cattle, but is not effective against existing adult flies. When starting a feeding program during the fly season, it may be necessary to use other control measures to reduce the population of existing adult flies.
Supplemental fly control measures may be needed in and around cattle lots and buildings to control adult house flies and stable flies which can breed not only in cattle manure but in other decaying vegetable matter or silage on the premises.
In order to achieve optimum fly control Stockade Fly Control Block with RABON should be used in conjunction with other good management and sanitation practices.

HB Manufactured by **HARVEST BRANDS, INC.** Pittsburg, Kansas 65702 **HARVEST.**

EPA Reg. No. 7627-22
EPA Est. No. 07627-KS-01

613

BEST AVAILABLE COPY