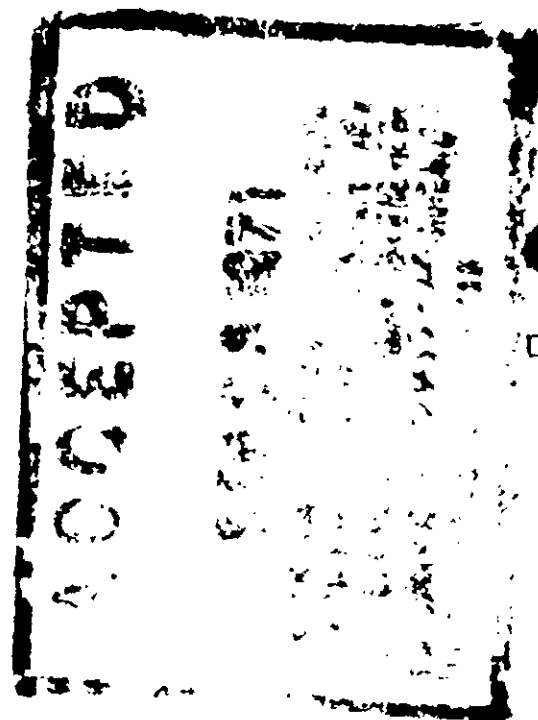


SUPERSWEET RODENT RID PELLETS contain Warfarin, an anticoagulant chemical that reduces blood clotting and upon repeated feedings causes fatal hemorrhage in rats and mice. It also contains an anti-bacterial agent which inhibits bacteria that produce vitamin K, an antidote for Warfarin.

* Trade mark of the Wisconsin Alumni Research Foundation for a rodenticide.

U.S.D.A. Reg. No. 7455-12



Supersweet FEEDS 

DIVISION OF INTERNATIONAL MULTIFOODS CORPORATION
MINNEAPOLIS, MINNESOTA 55415

CONTENT : FIVE POUNDS

FOR HARD-TO-KILL RATS AND MICE

ACTIVE INGREDIENTS

Warfarin [3-(α -acetylbenzyl)-4-hydroxycoumarin]	0.025%
N1-(2-quinoxaliny) sulfanilamide (sulfaquinoxaline)	0.025%

INERT INGREDIENTS

99.950%

TOTAL 100.000%

CAUTION: Keep Out of Reach of Children, Domestic Animals and Pets.

See other precautions on the back/side panel.



DIRECTIONS FOR USE

RATS: (Bait generously.) Place four to six ounces of SUPERSWEET Rodent Rid pellets in dry containers next to burrows, or where rats are accustomed to feeding. Assure an uninterrupted supply of bait for a period of not less than 12 days and continue baiting until all signs of feeding have stopped. Replace stale damp or moldy baits with fresh bait.

MICE: Place tablespoonful amounts of SUPERSWEET Rodent Rid pellets in shallow containers where mice or signs of mice have been seen. Bait stations at 8 to 12 feet are recommended. Assure an uninterrupted supply of bait for a period of not less than 15 days. (Mice are "nibblers" so make plenty of bait placements to assure continuous feeding.)



CAUTION:

