

DIRECTIONS FOR USE

PENN-KIL Granular is specifically designed for quick knock-down and control of general mixed vegetation and such perennial grasses as Johnson grass, Dallis grass and Bermuda grass on noncropped land and industrial sites. PENN-KIL Granular may provide season-long control of seedlings on treated areas. Soil type, rainfall and length of growing season will influence the residual control of seedlings. Apply on parking lots, storage yards, fence lines, highway and railroad sites and other similar areas.

APPLICATION – For all uses, uniform application is essential. PENN-KIL Granular may be applied either as a dry granular material or as a water spray. Both spray and dry applications become effective as soil treatments following rainfall or irrigation.

For DRY application, conventional herbicide spreaders may be used. The hand operated P CB Spreader is especially recommended for use where power equipment is not desired.

For SPRAY application use equipment with mechanical agitation. Add up to 3 pounds PENN-KIL Granular per gallon of water. Continue agitation until the herbicide is completely dissolved and during spraying operation. Treatment while weeds are small is suggested to minimize the amount of dry vegetation remaining after treatment.

GENERAL VEGETATION CONTROL – For DRY granular treatment, apply $\frac{1}{2}$ to 2 pounds per 100 square feet. The lighter rates should be used only at time of weed emergence on moist soil or when precipitation is anticipated while weeds are still young. For SPRAY applications, add $\frac{1}{2}$ to 2 pounds of PENN-KIL Granular to sufficient water to cover 100 sq. feet and tips - $\frac{1}{2}$ to 1 gallon per 100 square feet is usually adequate for young growth up to 6 inches high. The higher rates may be necessary to insure thorough coverage of heavy vegetation or to provide extended residual control.

PERENNIAL WEED CONTROL – Persistent perennial weeds are most effectively treated when nearing maturity or during dormant stages in the fall. Spring applications may also be made under moderate rainfall conditions. Summer applications are recommended only where rainfall is dependable for leaching the herbicide into the soil. Apply 1 to 3 pounds per 100 square feet in the dry granular form or as a spray. On deep-rooted perennials such as bindweed, Canada thistle, Bermuda grass and quack grass the heavier rates may be required.

JOHNSON GRASS CONTROL – PENN-KIL Granular is particularly effective on deep-rooted perennial grasses such as Johnson grass, Bermuda grass and Dallis grass on industrial sites, roadsides, fence lines and storage yards. Apply dry at 2 to 3 pounds per 100 square feet or add 2 to 3 pounds to 1 or 2 gallons of water to adequately cover 100 square feet for the control of established perennial grasses. Seedlings can be controlled with 1 to 2 pounds per 100 square feet. Maximum efficiency on Johnson grass is obtained by treating after heading until late fall.

IMPORTANT

This material is not selective in action and may be toxic to all types of vegetation and may render the entire treated area totally or partially unproductive for one or more years. Care should be taken to confine the use or application to the particular area intended to be treated and to avoid its contact with lawns, trees, shrubs, crops and other desirable plants which are not intended to be destroyed or injured. This includes precautions in treating areas which may be overlaid by roots of adjacent valuable growths. Careless application of this material, or washing by water run-off, to areas where desirable plants are growing or which will be used for later planting may result in injury to desirable plants. Do not drain or flush equipment on or near such areas.

Do not contaminate domestic or irrigation waters or waters used by fish and wildlife. Wash clothing and equipment after application. Keep animals off treated areas until rainfall has leached all the herbicide into the soil. Mechanical equipment should be thoroughly cleaned after use.

NOTICE

PENN-KIL GRANULAR

NONSELECTIVE WEED AND GRASS KILLER

APPLY DRY OR AS WATER SPRAY

U.S. Patents 2,700,604 & 3,227,541
Other Patents Pending USDA Reg. 1624-79

For General Vegetation and Perennial Grasses on
Noncropped Land and Industrial Sites Where Long
Residual Control of Seedlings is Desired

ACTIVE INGREDIENTS:

Sodium Metaborate Tetrahydrate ($\text{Na}_2\text{B}_2\text{O}_4 \cdot 4\text{H}_2\text{O}$)	66.5 %
Boron Trioxide (B_2O_3) equivalent	22.6 %
Sodium Chlorate (NaClO_3)	30.00 %
Bromacil (5-bromo-3-sec-butyl-6-methyluracil)	1.5 %

INERT INGREDIENTS: 2.0 %

CAUTION— Keep out of reach of children

Avoid contamination of feed and feedstuffs.
Do not store in direct contact with ground
or concrete floors.

Do not leave container where children or
animals may take internally. Harmful if
swallowed. Avoid contact with skin and
clothing.

See back panel for other cautions
and directions for use.

PENN-KIL GRANULAR

NONSELECTIVE WEED AND GRASS KILLER

APPLY DRY OR AS WATER SPRAY

U.S. Patents 2,700,604 & 3,227,541
Other Patents Pending USDA Reg. 1624-79

For General Vegetation and Perennial Grasses on
Noncropped Land and Industrial Sites Where Long
Residual Control of Seedlings is Desired

ACTIVE INGREDIENTS:

Sodium Metaborate Tetrahydrate ($\text{Na}_2\text{B}_2\text{O}_4 \cdot 4\text{H}_2\text{O}$)	66.5 %
Boron Trioxide (B_2O_3) equivalent	22.6%
Sodium Chlorate (NaClO_3)	30.00%
Bromacil (5-bromo-3-sec-butyl-6-methyluracil)	1.5 %

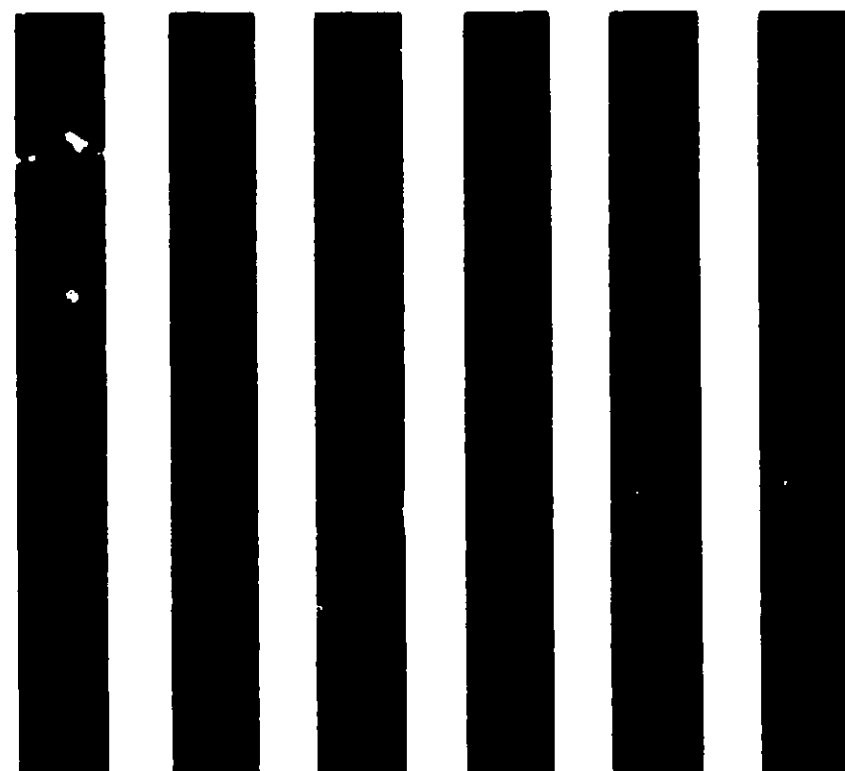
INERT INGREDIENTS: 2.0 %

CAUTION— Keep out of reach of children

Avoid contamination of feed and feedstuffs.
Do not store in direct contact with ground
or concrete floors.

Do not leave container where children or
animals may take internally. Harmful if
swallowed. Avoid contact with skin and
clothing.

See back panel for other cautions
and directions for use.



APPLICATION— For all uses, uniform application is essential. PENN-KIL Granular may be applied either as a dry granular material or as a water spray. Both spray and dry applications become effective as soil treatments following rainfall or irrigation.

For DRY application, conventional herbicide spreaders may be used. The hand operated P CB Spreader is especially recommended for use where power equipment is not desired.

For SPRAY application use equipment with mechanical agitation. Add up to 3 pounds PENN-KIL Granular per gallon of water. Continue agitation until the herbicide is completely dissolved and during spraying operation. Treatment while weeds are small is suggested to minimize the amount of dry vegetation remaining after treatment.

GENERAL VEGETATION CONTROL— For DRY granular treatment, apply $\frac{1}{2}$ to 2 pounds per 100 square feet. The lighter rates should be used only at time of weed emergence on moist soil or when precipitation is anticipated while weeds are still young. For SPRAY applications, add $\frac{1}{2}$ to 2 pounds of PENN-KIL Granular to sufficient water to cover 100 sq. feet and tips - $\frac{1}{2}$ to 1 gallon per 100 square feet is usually adequate for young growth up to 6 inches high. The higher rates may be necessary to insure thorough coverage of heavy vegetation or to provide extended residual control.

PERENNIAL WEED CONTROL— Persistent perennial weeds are most effectively treated when nearing maturity or during dormant stages in the fall. Spring applications may also be made under moderate rainfall conditions. Summer applications are recommended only where rainfall is dependable for leaching the herbicide into the soil. Apply 1 to 3 pounds per 100 square feet in the dry granular form or as a spray. On deep-rooted perennials such as bindweed, Canada thistle, Bermuda grass and quack grass the heavier rates may be required.

JOHNSON GRASS CONTROL— PENN-KIL Granular is particularly effective on deep-rooted perennial grasses such as Johnson grass, Bermuda grass and Dallis grass on industrial sites, roadsides, fence lines and storage yards. Apply dry at 2 to 3 pounds per 100 square feet or add 2 to 3 pounds to 1 or 2 gallons of water to adequately cover 100 square feet for the control of established perennial grasses. Seedlings can be controlled with 1 to 2 pounds per 100 square feet. Maximum efficiency on Johnson grass is obtained by treating after heading until late fall.

IMPORTANT

This material is not selective in action and may be toxic to all types of vegetation and may render the entire treated area totally or partially unproductive for one or more years. Care should be taken to confine the use or application to the particular area intended to be treated and to avoid its contact with lawns, trees, shrubs, crops and other desirable plants which are not intended to be destroyed or injured. This includes precautions in treating areas which may be underlaid by roots of adjacent valuable growths. Careless application of this material, or washing by water run-off, to areas where desirable plants are growing or which will be used for later planting may result in injury to desirable plants. Do not drain or flush equipment on or near such areas.

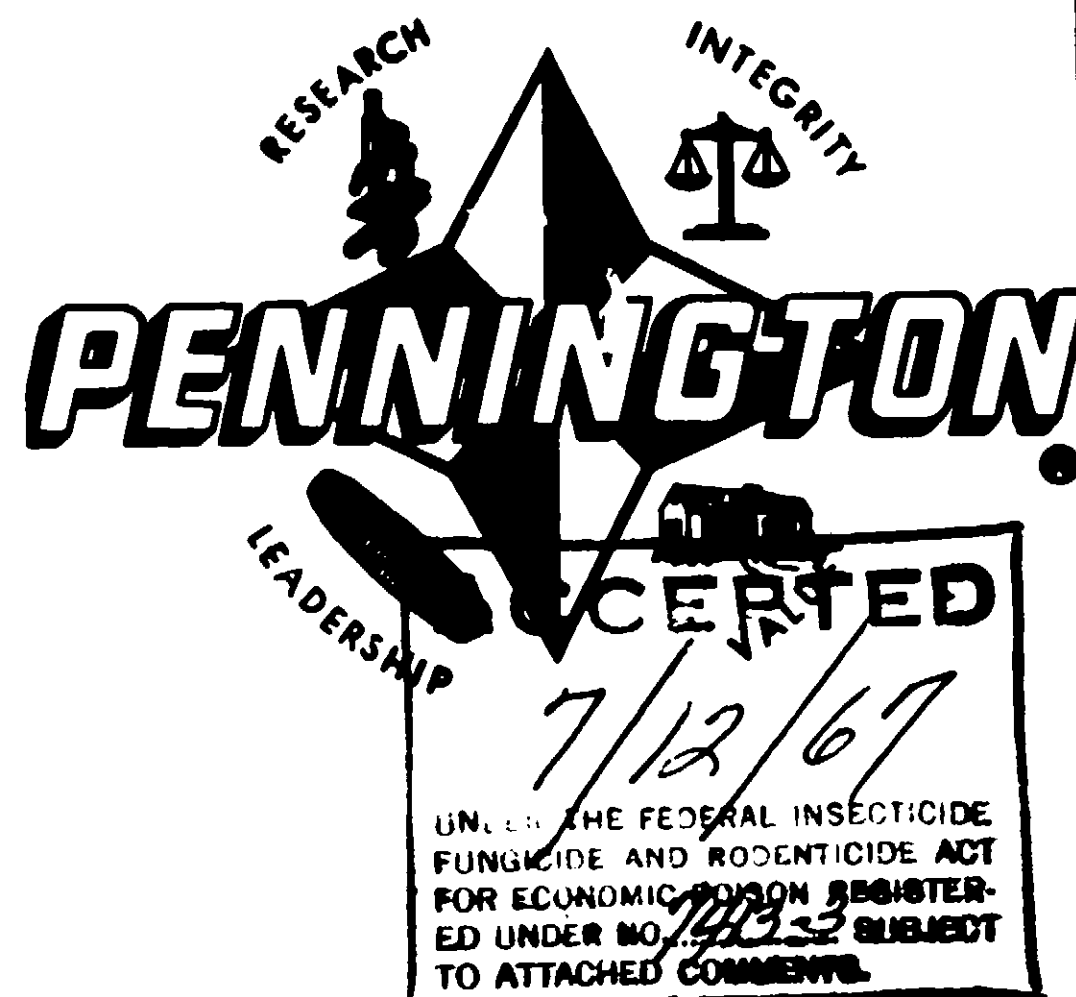
Do not contaminate domestic or irrigation waters or waters used by fish and wildlife. Wash clothing and equipment after application. Keep animals off treated areas until rainfall has leached all the herbicide into the soil. Mechanical equipment should be thoroughly cleaned after use.

NOTICE

Because of the many varying conditions affecting use and application, such as location, seasonal weather, soil composition and type of vegetation, manufacturer warns buyer that these and other conditions may impair or vary the results or effects of the use of this product. In any event, complete elimination of weeds is not guaranteed. It is advisable to consult your State Extension Service or Agricultural Experimental Station weed specialists on specific problems. Neither manufacturer nor seller shall be liable in respect to any injury or damage suffered by reason of the use of this product for a purpose not indicated by the label or when used contrary to the directions or instructions hereon nor with respect to breach of any warranty not expressly specified herein. Buyer accepts this material subject to these terms, and assumes all risk of usage and handling except when used or handled in accordance with this label. Neither manufacturer nor seller makes, and their employees and agents are not permitted to make, any representations or warranties, express or implied by law, not specifically set forth herein.

MANUFACTURED FOR
PENNINGTON GRAIN & SEED, INC.

MADISON, GA. - ATLANTA, GA.
VIDALIA, GA. - ORLANDO, FLA.
COLUMBIA, S.C. - GREENSBORO, N.C.



PENN-KIL GRANULAR

PENN-KIL Granular is a nonselective weed and grass killer. It is specifically designed for effective control of perennial grasses such as Johnson grass, quack grass, Bermuda grass and Dallis grass on industrial sites and noncropped land.

PENN-KIL Granular has a wide range of efficiency in controlling general vegetation. Apply dry by use of a PCB Spreader or use as a water spray.

PENN-KIL Granular is especially effective in eliminating established vegetation. The borate-chlorate gives quick knock-down of weeds and grasses — the bromacil assures long residual control.

PENN-KIL Granular provides control of vegetation for a season or longer.

PENN-KIL Granular is easy to use. Apply dry in granular form, straight from sack to soil with a handy PCB Spreader or apply as a water spray. PENN-KIL Granular is completely soluble in water.

PENN-KIL Granular is economical to use. Application rates may be from 1/2 to 3 pounds per 100 square feet, depending on vegetation and residual control desired.

FOR ECONOMIC POISON REGISTERED UNDER NO. 70933 SUBJECT TO ATTACHED COMMENTS.

PENN-KIL Granular is a nonselective weed and grass killer. It is specifically designed for effective control of perennial grasses such as Johnson grass, quack grass, Bermuda grass and Dallis grass on industrial sites and noncropped land.

PENN-KIL Granular has a wide range of efficiency in controlling general vegetation. Apply dry by use of a PCB Spreader or use as a water spray.

PENN-KIL Granular is especially effective in eliminating established vegetation. The borate-chlorate gives quick knock-down of weeds and grasses – the bromacil assures long residual control.

PENN-KIL Granular provides control of vegetation for a season or longer.

PENN-KIL Granular is easy to use. Apply dry in granular form, straight from sack to soil with a handy PCB Spreader or apply as a water spray. PENN-KIL Granular is completely soluble in water.

PENN-KIL Granular is economical to use. Application rates may be from ½ to 3 pounds per 100 square feet, depending on vegetation and residual control desired.

PENN-KIL Granular is packaged in 50 pound multiwall paper bags.

REFER TO DIRECTIONS ON REVERSE SIDE FOR THE MOST EFFICIENT USE OF THIS OUTSTANDING PRODUCT.

MANUFACTURED FOR
PENNINGTON GRAIN & SEED, INC.

MADISON, GA. - ATLANTA, GA.
VIDALIA, GA. - ORLANDO, FLA.
COLUMBIA, S.C. - GREENSBORO, N.C.