

3. HERE ARE THE RESULTS YOU SHOULD EXPECT!
Economic and effective control of Ants, Cockroaches and other listed insects can be obtained when ferti-lome Ant & Roach Powder is applied.

DISPOSAL

Do not reuse empty container. Wrap container and put in trash collection.

**PRECAUTIONARY STATEMENTS
HAZARDS TO HUMANS
AND DOMESTIC ANIMALS**

CAUTION: May be harmful if swallowed, inhaled or absorbed through skin. Avoid breathing of dust. Avoid contact with skin, eyes and clothing. Wash hands and exposed skin before eating, drinking or smoking and after handling. Wash all contaminated clothing thoroughly before reuse. Keep children and pets off treated areas.

STATEMENT OF PRACTICAL TREATMENT:
IF SWALLOWED - Call a physician or Poison Control Center immediately. Drink one or two glasses of water and induce vomiting by touching back of throat with finger. Do not induce vomiting or give anything by mouth to an unconscious person.
IF INHALED - Remove victim to fresh air. Apply artificial respiration if indicated.
IF ON SKIN - Remove contaminated clothing. Wash affected areas with soap and water.
IF IN EYES - Rinse thoroughly with clean water.
NOTE TO PHYSICIAN: Contains anticholinesterase carbamate insecticide. In case of overexposure, atropine sulfate 2 mg (Equivalent to 1/30 grain adult dose) should be given and repeated as necessary until fully atropinized.

ENVIRONMENTAL HAZARDS

This product is toxic to fish, birds and other wildlife. Do not apply directly to water. Do not contaminate water by cleaning of equipment or disposal of wastes. Apply this product only as specified on this label.

This product is highly toxic to bees exposed to direct treatment or to residues on plants.

IMPORTANT: Do not use on or contaminate fruit, vegetables or other food crops. Do not apply to humans and animals, clothing or bedding. Do not contaminate feed or food products or food preparation surfaces, dishes, kitchen utensils and food containers.

Buyer assumes all risks of use, storage or handling of this material not in strict accordance with directions given herewith.

Voluntary Purchasing Groups, Inc.
Bonham, Texas 75418

EPA Est. No. 7401 TX 1
EPA Reg. No. 7401 346

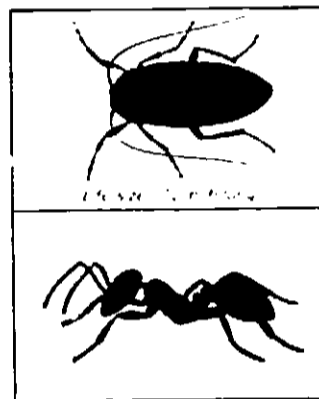
Net Contents 10 ozs



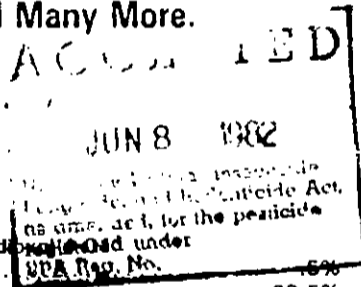
ferti-lome



Ant & Roach Powder



- * Kills Ants & Cockroaches, Fleas, Ticks, Crickets, Silverfish, Spiders, Wasps, Sowbugs, Ground Beetles, Earwigs, Centipedes, Millipedes, Firebrats, Scorpions and Many More.
- * Easy-to-Use Shaker Can.



ACTIVE INGREDIENT:
Bendiocarb: (2,2-dimethyl-1, 3-benzodioxane-5-ylmethyl) carbamate) 0.5%

INERT INGREDIENTS: 99.5%

KEEP OUT OF REACH OF CHILDREN
CAUTION
SEE BACK PANEL FOR
ADDITIONAL PRECAUTIONARY STATEMENTS

DIRECTIONS FOR USE

It is a violation of Federal law to use this product in a manner inconsistent with its labeling.

1. WHAT IS THIS PACKAGE FOR?

ferti-lome Ant & Roach Powder is a economical, easy to use, and effective means of killing Ants & Cockroaches, Fleas, Ticks, Spiders, Silverfish, Crickets, Wasps, Scorpions, Centipedes, Millipedes, Ground Beetles, Sowbugs, Pillbugs, Earwigs, Firebrats and other insects. This product is ideal for use in houses, garages, trailers, campers, storage sheds, apartment buildings, stores, warehouses, industrial buildings, schools, nursing homes, hospitals, restaurants, hotels, and other areas where pests appear.

2. HOW DO YOU USE IT?

Thoroughly dust all areas where pests crawl and hide.

FOR ANTS, COCKROACHES, CRICKETS, SILVERFISH, SPIDERS, CENTIPEDES, MILLIPEDES, SCORPIONS, GROUND BEETLES, SOWBUGS, PILLBUGS, EARWIGS & FIREBRATS: Thoroughly dust around doors and windows, in cracks, crevices, attics, storage localities, basements, and crawl spaces, around sinks, stoves, trash cans, refrigerators, cabinets and behind base boards. **FOR ANTS,** apply to ant trails and around doors and windows where they may enter premises.

CARPENTER ANTS: Dust around doors and windows and other places where these pests enter premises. When possible, locate and dust nests and surrounding areas.

BROWN DOG TICKS & FLEAS IN BUILDINGS: Dust in infested areas such as pet beds and resting quarters, near by cracks and crevices, under the edge of rugs and floor coverings, between and under cushions of upholstered furniture and other places where these pests may hide. Old bedding of pets should be removed after treatment of pet areas and replaced with clean fresh bedding. Do not treat animals or their bedding with this product. To control source of your flea infestations, treat pets with a product registered for animal application.

WASPS: It is best to treat wasp nests at night when insects are less active and have returned to the nest. For best results, carefully dust near nests, and check one or two days after treatment to ensure complete kill. Repeat if necessary. If possible, remove and destroy nest to prevent hatching of new insects. For ground nests, carefully dust entrance and surrounding areas. Repeat in one or two days if wasp activity is still present. Do not use this product to treat nests overhead.

OUTDOOR USE: Use as a residual treatment for control of ants, brown dog ticks, fleas, centipedes, cockroaches, crickets, earwigs, firebrats, ground beetles, millipedes, pillbugs, scorpions, silverfish, sowbugs, spiders, and wasps. Make a residual treatment around windows and doors, porches, screens, eaves, patios, garages, under stairways and in crawl spaces and other areas where pests hide. To help prevent invasion of buildings and structures by the above pests, treat a band of soil and vegetation 6 to 10 feet wide around and adjacent to the building or structure. Also treat the building foundation and crawl spaces where pests are active and may find entrance. Apply thoroughly and uniformly to the band area. Pay particular attention to ant hills and wasp nests in the band area. Wasp nests in trees and shrubs may be treated as above.

UNAPPROVED CAP