



ferti-lome



1. WHAT IS THIS PACKAGE FOR?

This formulation gives you an effective and economical means of killing snails, slugs, pillbugs (sowbugs), earwigs, ants and cutworms in your shrub and flower beds, vegetable garden, around building foundations, patios, stone and sidewalks.

2. HOW DO YOU USE IT?

Shrub and Flower Beds, Around Buildings, Patios and Sidewalks: Apply bait to soil around plants but not directly on stems, trunks or foliage. Sprinkle bait lightly on ground in areas to be treated, preferably in late evening, because these pests are mostly late evening and night feeders. Also apply bait where pests hide during the day. Do not apply in pHes. Make application in early spring and repeat as necessary to maintain control. For best results areas to be treated should be damp; if necessary water prior to application of bait.

Snails and slugs migrate extensively! Migration from infested areas may be prevented by baiting a barrier from the adjacent infested areas.

VEGETABLES: To kill Armyworms, Cutworms, Grasshoppers, Crickets, Darkling ground Beetles and Pillbugs (Sowbugs) apply 1/4 lb. to 220 sq. ft. of garden area using same directions as above. Do not apply to edible parts. Carefully follow day between final application and harvest as listed in chart below.

Subsequent planting of food and feed crops in treated soil must be made with crops on this and other carbaryl labels.

CROP	DAYS BETWEEN FINAL APPLICATION & HARVEST
Tomatoes, Peppers, Potatoes, Corn, Eggplant, Carrots, Beans, Okra	0
Broccoli, Brussels Sprouts, Cabbage, Cauliflower, Lettuce, Beets (roots), Parsnips, Rutabaga, Turnips (roots), Radishes, Horseradish	3
Collards, Endive, Kale, Spinach, Swiss Chard	14
Strawberries	6

3. HERE ARE THE RESULTS YOU MAY EXPECT!

Protection from listed, damaging bugs in Home Gardens... Control of snails and slugs; removes the unsightly slime trail left by these pests.

WARNING: Keep out of reach of children. May be fatal if swallowed. Avoid breathing of dust. Avoid contact with skin, eyes and clothing. Wear regular long-sleeved work clothing. Change to clean clothing daily. Wash hands and face before eating. Wash thoroughly after handling.

Do not store near or contaminate food or feedstuffs. Keep children and pets off treated areas. Protect dogs from treated areas, since they may be attracted to this product when applied.

STORAGE: Store in original container and place in a locked storage area. **DISPOSAL:** Do not reuse container. Rinse thoroughly before discarding in trash. Securely wrap original container in several layers of newspaper and discard in trash.

Environmental Caution: This product is toxic to birds and wildlife. Birds feeding on treated areas may be killed. Keep out of lakes, streams or ponds. Do not contaminate water by cleaning of equipment or disposal of wastes. Apply this product only as specified on this label.

Bayer assumes all risks of use, storage or handling of this material not in strict accordance with directions given herewith.

*SEVIN is the registered trademark of Union Carbide Corp. for carbaryl insecticide.

VOLUNTARY PURCHASING GROUPS, INC.
Bonham, Texas

NET WEIGHT 13 OZS.

1608-14-247 EPA Est. No. 7401-TX-1 EPA Reg. No. 7401-265

Home Garden

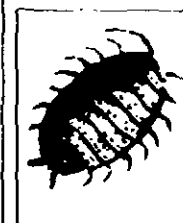
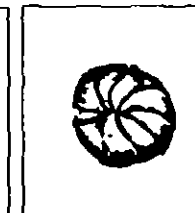
\$3.98

ACCEPT

JUN 5 1985

Bug Bait

- Kills Snails, Slugs, Pillbugs (Sowbugs) Earwigs, Ants, Grasshoppers, and Cutworms Around Ornamental Shrubs, Flowers, and Certain Vegetables.
- Contains Attractant to Lure Snails and Slugs to Bait



Active Ingredients:
 Carbaryl (1-Naphthyl N-Methylcarbamate)* 4%
 Metaldohyde 1%
 Inert Ingredients: 95%
 Total 100%

This pesticide may be fatal to children, and dogs or other pets, if eaten. Keep children and pets out of treated area.

**KEEP OUT OF REACH OF CHILDREN
WARNING**

SEE BACK PANEL FOR ADDITIONAL WARNINGS