

### 1. WHAT IS THIS PACKAGE FOR?

This package makes insect and disease control easier. It contains insecticides, miticide and fungicide that will fill most of your rose and flower garden needs.

### 2. HOW DO YOU USE IT?

Shake well before using. Remove protective cap. Hold container in an upright position. Point nozzle in direction indicated by arrow. Press nozzle and spray infested surfaces until wet, moving the spray stream rapidly to prevent excessive wetting of surfaces and waste of material. Point spray away from people and pets. For best results apply before insects or diseases appear. Apply preferably in evening or early morning when air is still. Do not apply during heat of day or in direct sunlight. Apply at 7-10 day intervals throughout growing season. Do not use indoors or in confined areas. Do not attempt to spray against the wind.

**ROSES:** For Aphids; Leafhoppers; Red Spider; White Flies; Japanese, May and Cucumber Beetle; Rose Chafer; Rose Slug; Powdery Mildew and Black Spot.

**FLOWERS: (Insect Control)** For control of Aphids; Leafhoppers; Spider Mites; Birch and Holly Leaf Miners; Fall Armyworms; Cutworms; White Flies and Thrips on Asters, Phlox, Carnations, Chrysanthemums, Iris, Marigolds, Zinnias, Dahlia and Snapdragons.

**FLOWERS: (Disease Control)** For Powdery Mildew on Asters and Phlox, for Altheneria Leaf Spot and Rust on Carnations, for Powdery Mildew and Septoria Leaf Spot on Chrysanthemums, for Didymellina Leaf Spot on Iris, for Altheneria Leaf Spot on Marigold and Zinnias and for Anthracnose, Powdery Mildew and Rust on Snapdragons. Use 3-7 day interval for disease control on Marigolds, Zinnias and Snapdragons.

### 3. HERE ARE THE RESULTS YOU MAY EXPECT!

By providing fast, economical insect and disease control ferti-lome Systemic ROSE & FLOWER SPRAY makes it easy and pleasant to grow more beautiful roses and flowers.

**CAUTION:** May be fatal if swallowed, inhaled or absorbed through the skin. Do not breathe fumes or spray mist. Do not get in eyes, on skin, or on clothing. Wash thoroughly with soap and warm water after handling. Wash clothing with soap and hot water before reuse.

Keep children and pets away from treated areas until spray deposit has dried on treated areas. Do not handle treated plants until thoroughly dry. Do not contaminate feed or foodstuffs.

This product is toxic to fish and wildlife. Birds feeding on treated area may be killed. Keep out of any body of water. Do not contaminate water by cleaning of equipment, or disposal of waste. Do not use on plants used for food or forage.

This product is toxic to bees and should not be applied when bees are actively visiting the area.

Do not re-use container for **any** purpose.

If poisoning occurs, obtain prompt medical aid.

**NOTE TO PHYSICIAN:** Atropine sulfate is antidotal. 2-PAM is also antidotal and may be administered in conjunction with atropine.

**WARNING:** Flammable! Contents under pressure. Do not use near fire, sparks, or flame. Do not puncture or incinerate container. Exposure to temperatures above 130° F. may cause bursting.

Buyer assumes all risks of use, storage or handling of this material not in strict accordance with directions given herewith.

†U.S. Patent No. 2,791,599. Canadian Patent No. 534,370.

manufactured for  
VOLUNTARY PURCHASING GROUPS, INC.  
BONHAM, TEXAS

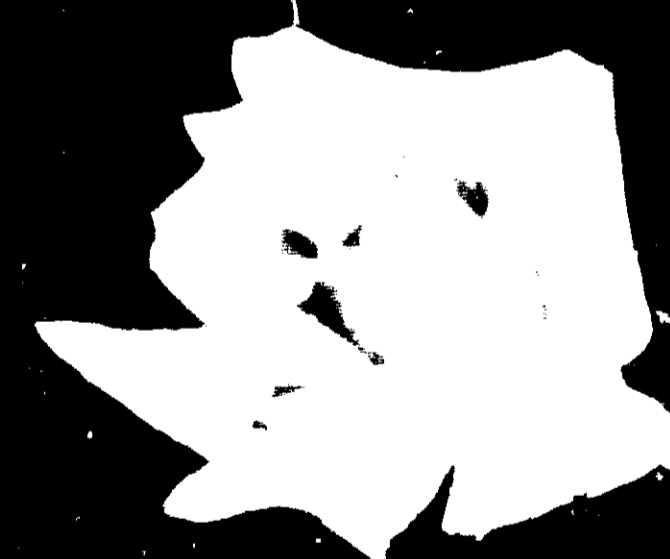


ferti-lome



Systemic

# ROSE & FLOWER GARDEN SPRAY



**CAUTION KEEP OUT OF REACH OF CHILDREN**

1. WHAT IS THIS PACKAGE FOR?

This package contains insect and disease control powder. It contains 18 ounces, or 510 grams, of powder that will kill or control insects and diseases you need.

2. HOW DO YOU USE IT?

Shake well before using. Remove protective cap. Hold container in an upright position. Point nozzle in a direction indicated by arrow. Press nozzle and spray infested surfaces until wet, moving the spray stream rapidly to prevent excessive wetting of surfaces and waste of material. Point spray away from people and pets. For best results, apply before insects or diseases appear. Apply preferably in evening or early morning when air is still. Do not apply during heat of day or in direct sunlight. Apply at 7-10 day intervals through out growing season. Do not use in bloom on fruiting plants. Do not attempt to spray against the wind.

**ROSES:** For Aphids, Leafhoppers, Flea Beetles, White Flies, Japanese Beetles and Spider Beetles, Fire Blight, Rose Ring Borer, Mildew and Black Spot.

**FLOWERS: (Insect Control)** For control of Aphids, Leafhoppers, Spider Mites, Beetles and Holly Leaf Miner. For Armyworms, Cutworms, White Flies and Trips on Asters, Anemones, Chrysanthemums, Iris, Marigolds, Zinnias, Dahlias and Snapdragons.

**FLOWERS: (Disease Control)** For Powdery Mildew on Asters and Holly, for Alternaria Leaf Spot and Fusarium Blight on Asters, for Powdery Mildew and Septoria Leaf Spot on Chrysanthemums, for Didymella Leaf Spot on Iris, for Alternaria Leaf Spot on Marigold and Zinnias and for Anthracnose, Powdery Mildew and Fusarium Snapdragons. Use 2-3 day interval for disease control on Marigolds, Zinnias and Snapdragons.

3. HERE ARE THE RESULTS YOU MAY EXPECT!

By growing your plants in a disease and insect free zone, you can expect to grow more beautiful plants.

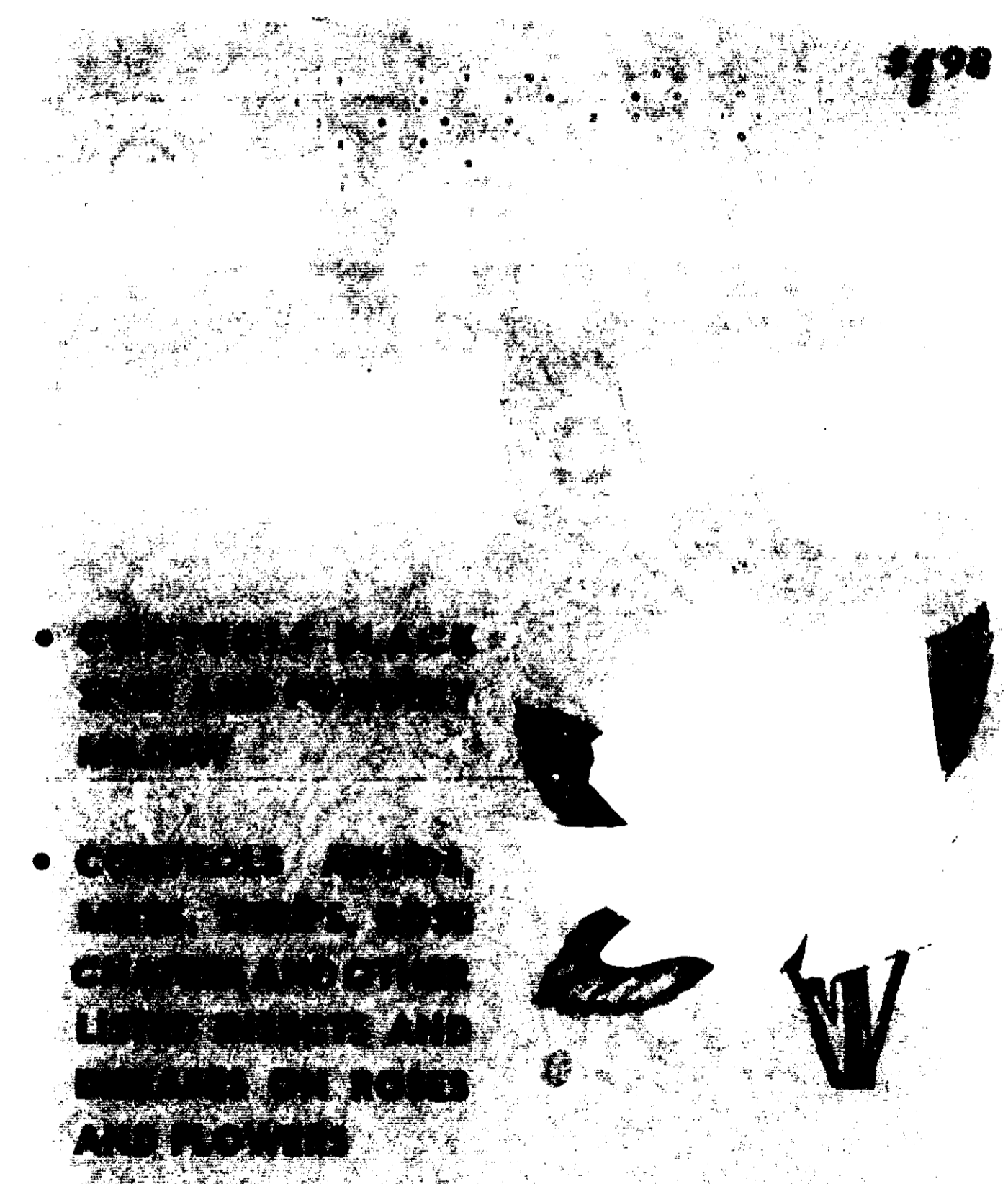
**CAUTION:** Do not use on plants with white flowers. Do not use on plants with white flowers. Do not use on plants with white flowers. Do not use on plants with white flowers.

Do not use on plants with white flowers. Do not use on plants with white flowers. Do not use on plants with white flowers. Do not use on plants with white flowers.

Do not use on plants with white flowers. Do not use on plants with white flowers. Do not use on plants with white flowers. Do not use on plants with white flowers.

**WARNING:** Do not use on plants with white flowers. Do not use on plants with white flowers. Do not use on plants with white flowers. Do not use on plants with white flowers.

manufactured for  
VOLUNTARY PURCHASING GROUPS, INC.  
BONHAM, TEXAS



**Active Ingredients:**  
Methoxyfenozide, Technical ..... 0.50%  
S-(2,4-Dichlorophenyl) O,O-dimethyl phosphorothioate ..... 0.25%  
Imidacloprid ..... 0.50%  
**Inert Ingredients:** ..... 98.75%

\*Equivalent to 0.25% 2,4-Dichlorophenyl-1,1,1-trichloroethane  
and 0.25% 2,4-Dichlorophenyl-1,1,1-trichloroethane  
\*\*Equivalent to 0.25% 2,4-Dichlorophenyl-1,1,1-trichloroethane  
**NET WEIGHT 18 OUNCES**