

7401



**1. WHAT IS THIS PACKAGE FOR?**

This package of ferti lome MOSQUITO SPRAY was especially formulated to provide you with a fast, effective, economical means of killing mosquitoes. Mosquitoes are nocturnal insects, hiding during the heat of the day in the dense foliage of shrubs, trees, flowers, under houses and in other similar shaded areas. For best control spray in mid morning or in mid afternoon in order to kill mosquitoes in their hiding places.

**2. HOW DO YOU USE IT?**

Mix 10 tablespoons in 1 gallon of water (a hose on sprayer is ideal for this application). Apply as a thorough cover spray. Penetrate dense foliage of shrubs, trees and flowers. Spray under houses, sheds, around foundations and in similar shaded areas where mosquitoes hide. Repeat at 10-14 day intervals or as necessary to maintain control.

**NOTE:** Do not use on ferns. Injury may occur on some species of Crassula and Camphor Junipers. May be injurious to petunias, small leaf spirea, Chinese Elm, Japanese Maples, Japanese Barberry, Privet, Red Maple and Red Bud. Do not apply during periods of high humidity or severe drought.

**3. HERE ARE THE RESULTS YOU MAY EXPECT!**

More pleasant out-of-door living and gardening may be expected with the use of ferti lome MOSQUITO SPRAY.

**CAUTION:** May be harmful if swallowed, inhaled or absorbed through the skin. Do not take internally. Do not breathe fumes or spray mist. Avoid contact with skin, eyes and clothing. Wash thoroughly after handling. Avoid contamination of feed and foodstuffs.

**DO NOT USE, POUR, SPILL OR STORE NEAR HEAT OR OPEN FLAME.**

This product is toxic to fish. Keep out of lakes, streams or ponds. Do not contaminate water by cleaning of equipment, or disposal of wastes. Apply this product only as specified on this label.

This product is highly toxic to bees exposed to direct treatment or residues on crops. Protective information may be obtained from your Cooperative Agricultural Extension Service.

Do not reuse container for any purpose. Destroy empty container.

Buyer assumes all risks of use, storage or handling of this material not in strict accordance with directions given here with.

**VOLUNTARY PURCHASING GROUPS, INC  
BONHAM, TEXAS**

28M 1 72

EPA Reg. No. 7401-175

# MOSQUO SPRAY

- KILLS MOSQUITOES IN (
- KILLS MOSQUITOES HID  
SHRUBS, TREES AND SIM
- 10 TABLESPOONS MAKE

**Active Ingredients:**  
 Malathion\* .....  
**Inert Ingredients:** .....  
 Total .....  
 \*0,0-dimethyl phosphorodithioate of d  
**NET CONTENTS**

**CAUTION KEEP OU  
SEE BACK PANEL FOI**

**3. HERE ARE THE RESULTS YOU MAY EXPECT!**

More pleasant out of door living and gardening may be expected with the use of ferti-lome MOSQUITO SPRAY.

**CAUTION:** May be harmful if swallowed, inhaled or absorbed through the skin. Do not take internally. Do not breathe fumes or spray mist. Avoid contact with skin, eyes and clothing. Wash thoroughly after handling. Avoid contamination of feed and foodstuffs.

**DO NOT USE, POUR, SPILL OR STORE NEAR HEAT OR OPEN FLAME.**

This product is toxic to fish. Keep out of lakes, streams or ponds. Do not contaminate water by cleaning of equipment or disposal of wastes. Apply this product only as specified on this label.

This product is highly toxic to bees exposed to direct treatment or residues on crops. Protective information may be obtained from your Cooperative Agricultural Extension Service.

Do not reuse container for any purpose. Destroy empty container.

Buyer assumes all risks of use, storage or handling of this material not in strict accordance with directions given herewith.

ASING GROUPS, INC  
M, TEXAS

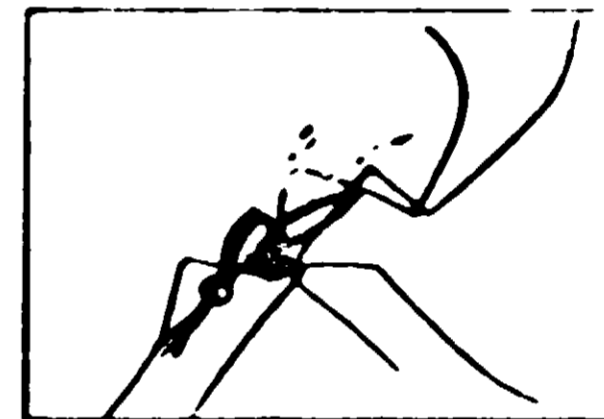
EPA Reg. No. 7401-175



**ferti-lome**



# MOSQUITO SPRAY



- KILLS MOSQUITOES IN OUTDOOR LIVING AREAS
- KILLS MOSQUITOES HIDING IN DENSE FOLIAGE OF SHRUBS, TREES AND SIMILAR AREAS.
- 10 TABLESPOONS MAKE 1 GALLON OF SPRAY

<b>Active Ingredients:</b>	
Malathion*	56%
<b>Inert Ingredients:</b>	
Total	100%

\*0,0-dimethyl phosphorodithioate of diethyl mercaptosuccinate.

NET CONTENTS 16 FL. OZS. (ONE PINT)

**CAUTION KEEP OUT OF REACH OF CHILDREN  
SEE BACK PANEL FOR ADDITIONAL CAUTIONS**