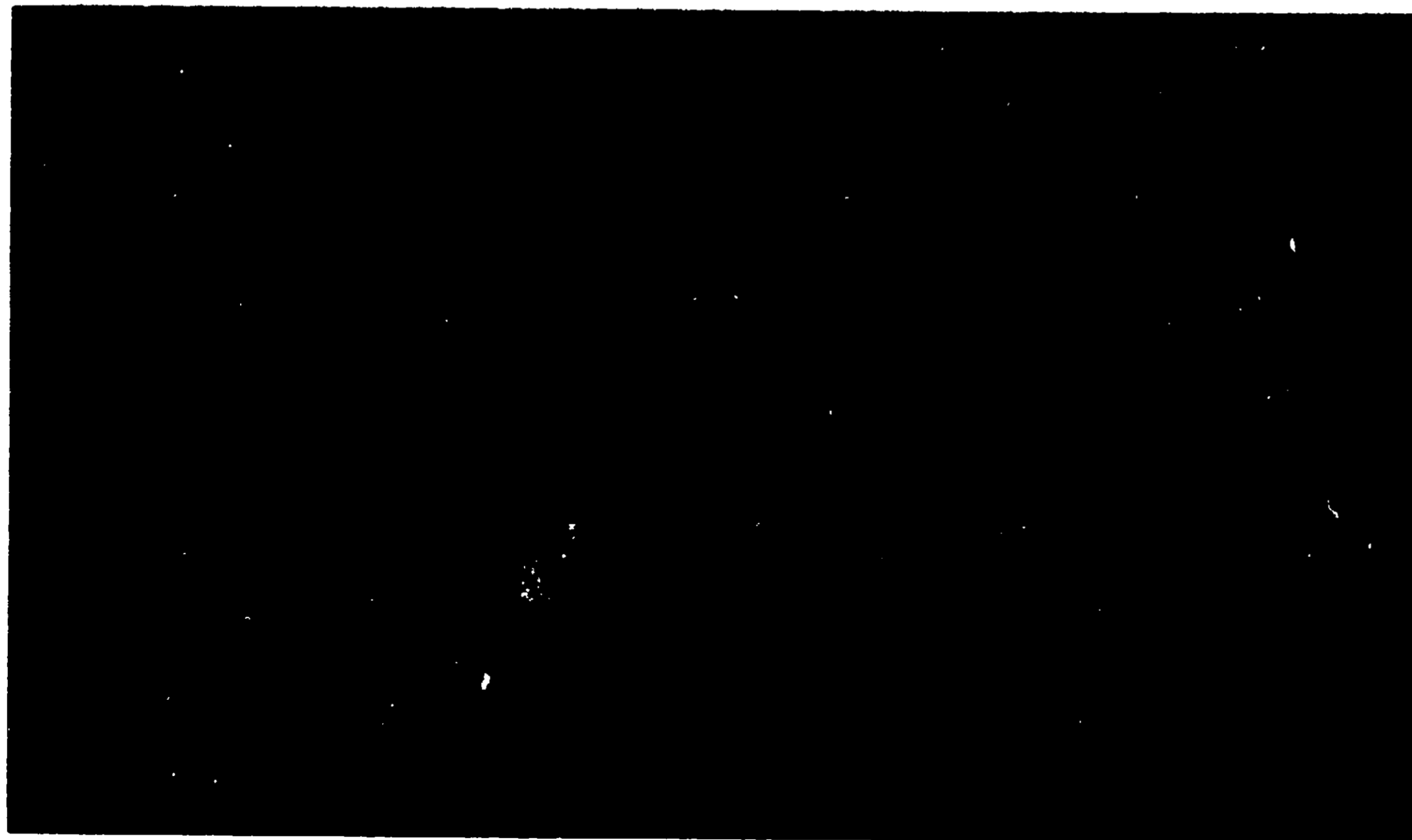


# Hi-Yield®

## 2 Lb. Methoxychlor Emulsifiable Concentrate



### GENERAL DIRECTIONS

#### MIXING

Add the recommended amount to about one-half the required volume of water and agitate well. When completely mixed, add the rest of the water and mix until spray emulsion is uniform.

#### APPLICATION

Apply at the rates given, using low gallonage or conventional spray equipment. Start applications at the first sign of insect infestation and repeat at 7 to 14 day intervals, as needed. Use enough water consistent with crop growth and adequate coverage. For aircraft application use 3 to 10 gallons per acre. For ground application use 20 to 125 gallons per acre.

#### FORAGE CROPS

##### ALFALFA, CLOVER, GRASS, SOYBEANS, COWPEAS, AND PEANUT FORAGE

For Spittlebugs, Leafhoppers and Alfalfa Caterpillars, use 2 quarts per acre; for Flea Beetles use 1 1/2 to 2 quarts per acre; for Alfalfa Weevil larvae, Fall Armyworm, Pea Weevil, Mexican Bean Beetle, Soybean Caterpillar, and Velvet Bean Caterpillar use 2 to 3 quarts per acre; for Cowpea Curculio and Japanese Beetle use 3 quarts per acre; for Armyworm use 3 to 4 quarts per acre.

**NOTE:** Apply no later than 7 days before harvest or grazing. DO NOT exceed 6 quarts per acre per application.

#### POTATOES

For Colorado Potato Beetle, Leafhoppers, and Flea Beetles use 2 quarts per acre, as needed. DO NOT exceed 4 1/2 quarts per acre per application.

#### LIVESTOCK

**CATTLE (Other than Dairy Animals):** As a spray for Red, Short-Nosed and Long-Nosed Lice, and Hornflies, use 1 quart in 12 1/2 gallons of water. Use 2 quarts of spray mixture for each average size animal. The spray should drench the entire animal until the skin is wet. If Tail Louse is present, use 2 quarts in 12 1/2 gallons of water. Spray the entire animal, especially the switch of the tail. Do not use on dairy animals.

On "BACK RUBBERS" for Horn Flies, dilute 1 gallon with 4 gallons of Diesel fuel or furnace type oil. DO NOT use any other type of oil. Use one gallon of solution to saturate burlap on "back rubber"; soak burlap every 2 to 3 weeks.

**HOGS:** As a spray for Lice, use 1 quart in 12 1/2 gallons of water. Wet the animals thoroughly with the spray mixture.

**NOTE:** Do Not use this material as a dip treatment. Use only as a spray.

#### MOSQUITOS

For Prehatch, Winter treatment of "Spring Brood" Larvae. Make a single application during winter months. Use two quarts (one pound actual methoxychlor) per acre. Apply undiluted or in enough water to give good coverage to the area. Apply only to intermittently flooded areas, stagnant water and temporary flood pools.

#### FLIES

To help reduce populations of house and stable flies in and around farm buildings, dumps and other outdoor locations, use 1 quart in 5 gallons of water. Apply in space with mist blower, or directly to flies with hydraulic spray equipment.

DO NOT per...  
equipment o...  
while sprayi...

**ELM BARK**...  
**HOW TO US**...  
**HYDRAULIC**...

spray to tho...  
gallons of sp...  
**MIST BLOWE**...  
surfaces. (2...  
**WHEN TO US**...  
when temper...  
spray dries.

**EMPTY GRA**...  
To help cont...  
toothed Gra...  
stored grain...  
in 10 gallons...  
stored, at the...  
to bin for at...

**COMPATIBIL**...  
DO NOT use...  
with oil. DO...

containing su...  
**NOTE: DO N**...  
allow to war...  
cautions cond...  
temperatures.

**CAUTION —**...  
DO NOT GET...  
DO NOT BRE...  
DO NOT US...  
EMPTY. DO

This product...  
will be killed...  
important res...  
ing will cont...  
Do not contac...  
sal of waste...  
Follow direct...  
conditions, m...  
influencing f...  
Buyer assume...  
accordance w

## GENERAL DIRECTIONS

### MIXING

Add the recommended amount to about one-half the required volume of water and agitate well. When completely mixed, add the rest of the water and mix until spray emulsion is uniform.

### APPLICATION

Apply at the rates given, using low gallonage or conventional spray equipment. Start applications at the first sign of insect infestation and repeat at 7 to 14 day intervals, as needed. Use enough water consistent with crop growth and adequate coverage. For aircraft application use 3 to 10 gallons per acre. For ground application use 20 to 125 gallons per acre.

### FORAGE CROPS

#### ALFALFA, CLOVER, GRASS, SOYBEANS, COWPEAS, AND PEANUT FORAGE

For Spittlebugs, Leafhoppers and Alfalfa Caterpillars, use 2 quarts per acre; for Flea Beetles use 1 1/2 to 2 quarts per acre; for Alfalfa Weevil larvae, Fall Armyworm, Pea Weevil, Mexican Bean Beetle, Soybean Caterpillar, and Velvet Bean Caterpillar use 2 to 3 quarts per acre; for Cowpea Curculio and Japanese Beetle use 3 quarts per acre; for Armyworm use 3 to 4 quarts per acre.

**NOTE:** Apply no later than 7 days before harvest or grazing. DO NOT exceed 6 quarts per acre per application.

### POTATOES

For Colorado Potato Beetle, Leafhoppers, and Flea Beetles use 2 quarts per acre, as needed. DO NOT exceed 4 1/2 quarts per acre per application.

### LIVESTOCK

**CATTLE (Other than Dairy Animals):** As a spray for Red, Short-Nosed and Long-Nosed Lice, and Hornflies, use 1 quart in 12 1/2 gallons of water. Use 2 quarts of spray mixture for each average size animal. The spray should drench the entire animal until the skin is wet. If Tail Louse is present, use 2 quarts in 12 1/2 gallons of water. Spray the entire animal, especially the switch of the tail. Do not use on dairy animals.

On "BACK RUBBERS" for Horn Flies, dilute 1 gallon with 4 gallons of Diesel fuel or furnace type oil. DO NOT use any other type of oil. Use one gallon of solution to saturate burlap on "back rubber"; soak burlap every 2 to 3 weeks.

**HOGS:** As a spray for Lice, use 1 quart in 12 1/2 gallons of water. Wet the animals thoroughly with the spray mixture.

**NOTE:** Do Not use this material as a dip treatment. Use only as a spray.

### MOSQUITOS

For Prehatch, Winter treatment of "Spring Brood" Larvae. Make a single application during winter months. Use two quarts (one pound actual methoxychlor) per acre. Apply undiluted or in enough water to give good coverage to the area. Apply only to intermittently flooded areas, stagnant water and temporary flood pools.

### FLIES

To help reduce populations of house and stable flies in and around farm buildings, dumps and other outdoor locations, use 1 quart in 5 gallons of water. Apply in space with mist blower, or directly to flies with hydraulic spray equipment.

DO NOT permit spray or spray mist to contact foodstuffs, livestock feed, watering equipment or milk handling equipment. Dairy animals should not be present while spraying. DO NOT use in poultry houses.

### ELM BARK BEETLES

#### HOW TO USE:

**HYDRAULIC SPRAYERS:** Mix 8 gallons per 100 gallons of spray. Apply enough spray to thoroughly cover all bark on trunk, limbs, and twigs (about 20 to 30 gallons of spray should cover a 50-foot elm tree.)

**MIST BLOWERS:** Mix 5 gallons per 10 gallons of spray. Thoroughly cover all bark surfaces. (2 to 3 gallons of spray should cover a 50-foot elm tree.)

**WHEN TO USE:** Apply as a dormant treatment in the spring before leaves appear, when temperature is above 40°F. and there is no danger of freezing before spray dries.

### EMPTY GRAIN BINS

To help control Rice Weevil, Granary Weevil, Lesser Grain Borer, Cadelle, Saw-toothed Grain Beetle, Confused Flour Beetle, and several other insect pests of stored grain, and help prevent infestations of newly stored grain use one gallon in 10 gallons of water. Apply during accessible or exposed stages, before grain is stored, at the rate of 2 gallons of spray per 1000 square feet. DO NOT add grain to bin for at least 24 hours or until sprayed surfaces have dried thoroughly.

### COMPATIBILITY

DO NOT use with materials containing sulfur or other substances incompatible with oil. DO NOT use on crops within 14 days of application of any material containing sulfur.

**NOTE:** DO NOT store at temperatures below 20° F. If exposed to prolonged cold, allow to warm to 50°. and agitate well before using. Observe the usual precautions concerning application of oil-containing products to crops during high temperatures, since many crops are then more susceptible to oil injury.

### CAUTION — HARMFUL IF SWALLOWED — MAY CAUSE SKIN IRRITATION.

DO NOT GET ON SKIN. IN CASE OF CONTACT, WASH WITH SOAP AND WATER. DO NOT BREATHE SPRAY MIST. DO NOT CONTAMINATE FEED OR FOODSTUFFS. DO NOT USE ON HUMANS. DO NOT RE-USE CONTAINER, DESTROY WHEN EMPTY. DO NOT STORE OR USE NEAR FIRE OR OPEN FLAME.

This product is toxic to fish. Keep out of lakes, streams or ponds. Shrimp and crab will be killed at application rate recommended. Do not apply where these are important resources. Do not apply to water drainage areas where runoff or flooding will contaminate ponds, lakes or streams.

Do not contaminate water by direct application, cleaning of equipment, or disposal of waste and containers. Apply this product only as specified on this label. Follow directions carefully. Timing and method of application, weather and crop conditions, mixtures with other chemicals not specifically recommended, and other influencing factors in the use of this product are beyond the control of the seller. Buyer assumes all risks of use, storage or handling of this material not in strict accordance with directions given herewith.

VOLUNTARY PURCHASING GROUPS, INC.

Bonham, Texas

14M-1-46

EPA Reg. No. 7401-118-AA