

1. WHAT IS THIS PACKAGE FOR?

This new and improved formulation gives you an effective and economical way to kill snails, slugs, pillbugs, sowbugs, earwigs and ants in your flower beds, shrub beds, around building foundations, patio stones and sidewalks.

2. HOW DO YOU USE IT?

Punch out holes in top of can and sprinkle bait lightly on ground in areas to be treated. Apply in late evening as these bugs are mostly late evening and night feeders. Apply around, but not against the stems of desirable plants. Place bait where these pests stay during daylight hours.

Bait areas thoroughly at the beginning of the spring planting season. Repeat at 7-10 day intervals or as necessary to maintain control. For best results areas to be treated should be damp. In dry weather water well before baiting.

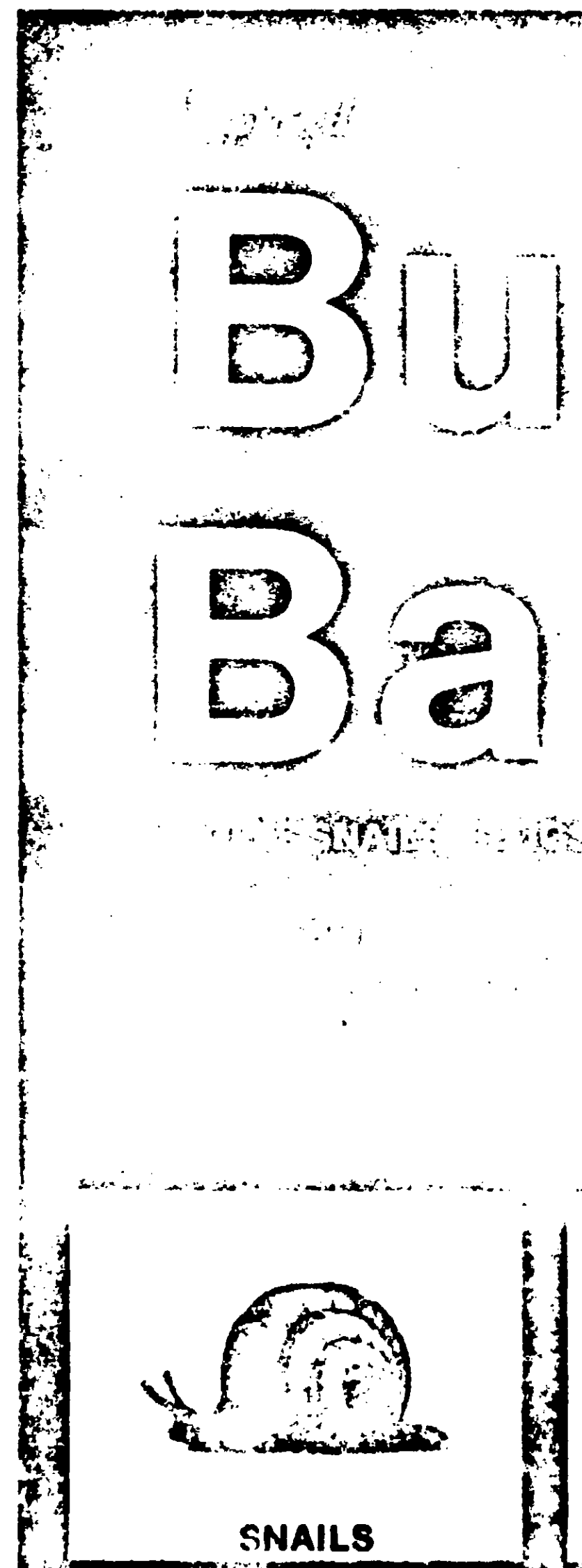
Snails and slugs migrate extensively. When invasions from adjacent areas are anticipated, a barrier of the bait will aid in control.

3. HERE ARE THE RESULTS YOU MAY EXPECT!

ferti-lome *Improved* BUG BAIT, used according to directions, protects your plants from damage by the listed bugs. By controlling these unsightly bugs you remove their messy appearance and the unsightly slime trails of snails and slugs.

WARNING: KEEP OUT OF REACH OF CHILDREN AND DOMESTIC ANIMALS. MAY BE FATAL IF SWALLOWED, ABSORBED THROUGH THE SKIN OR INHALED. Do not take internally. Avoid contact with skin, eyes and clothing. Harmful dust. Avoid inhalation of dust.

In case of contact, wash immediately with soap and water. Wash thoroughly after using. Wash hands and face before eating or smoking. Wash counter tops, floors and work clothes. Change to clean clothing daily.



Snails and slugs migrate extensively. When invasions from adjacent areas are anticipated, a barrier of the bait will aid in control.

3. HERE ARE THE RESULTS YOU MAY EXPECT!

ferti-lome *Improved* BUG BAIT, used according to directions, protects your plants from damage by the listed bugs. By controlling these unsightly bugs you remove their messy appearance and the unsightly slime trails of snails and slugs.

WARNING: KEEP OUT OF REACH OF CHILDREN AND DOMESTIC ANIMALS. MAY BE FATAL IF SWALLOWED, ABSORBED THROUGH THE SKIN OR INHALED. Do not take internally. Avoid contact with skin, eyes and clothing. Harmful dust. Avoid inhalation of dust.

In case of contact, wash immediately with soap and water. Wash thoroughly after using. Wash hands and face before eating or smoking. Wear regular long sleeved work clothing. Change to clean clothing daily. Wash contaminated clothing with soap and hot water before reuse. Avoid contamination of feed and foodstuffs.

Should poisoning occur, get prompt medical aid.

TO PHYSICIAN: Carbaryl is a moderate, reversible cholinesterase inhibitor. Atropine is antidotal.

Birds feeding on treated area may be killed.

This product is toxic to bees and should not be applied when bees are actively visiting area.

Do not reuse container for any purpose. Destroy empty container.

*Carbaryl Insecticide, SEVIN Reg. Trademark of Union Carbide Corp.

Buyer assumes all risks of use, storage or handling of this material not in strict accordance with directions given herewith.

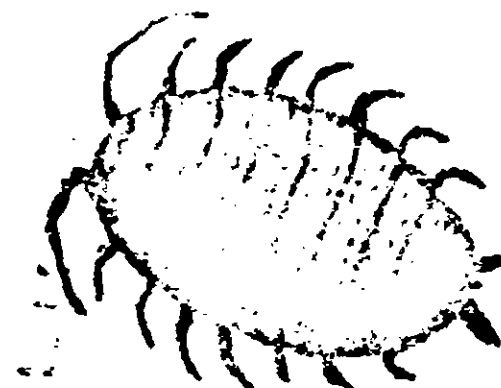
VOLUNTARY PURCHASING GROUPS, INC.,
BONHAM, TEXAS

42M-4-101

EPA Reg. No. 7401-72



SNAILS



SOWBUGS

DIRECTIONS FOR USE

Put about a cup of water in a watering can or other container. Add one fluid ounce (2 tablespoonsful) of SLUGIT. Then add one gallon water and stir thoroughly. Apply this quantity of solution by spraying through a coarse nozzle or with a water can to an area of 100 square feet. Make sure the entire area, including plants, is covered. A second application about 10 days later is recommended.

SLUGIT is not known to be harmful to plants when used as directed, but as an added precaution, a test should be made before applying it to valuable specimens of unusual plants. SLUGIT is harmless to earthworms and beneficial insects when used as directed. For best results, apply when slugs are active and when rain is not immediately expected. SLUGIT remains effective for about one week or until it is washed off by rain or other means.

Do not take internally. If swallowed, give an emetic of a tablespoonful of salt in a glass of warm water.

Do not use on or around food plants.

DO NOT REUSE CONTAINER. DESTROY WHEN EMPTY.

THIS PRODUCT IS TOXIC TO WILDLIFE. BIRDS FEEDING ON TREATED AREAS MAY BE KILLED.

**SHAKE CONTAINER WELL BEFORE USE
PROTECT FROM FROST
KEEP SOLUTION WELL STIRRED**

CONDITIONS OF SUPPLY

All goods supplied by us are of high grade and we believe them to be suitable but, as we cannot exercise control over their storage, handling, mixing or use or the weather conditions before, during and after application which may affect the performance of the goods, all conditions and warranties, statutory or otherwise, as to the quality or fitness for any purpose of our goods are excluded, and no responsibility will be accepted by us or re-sellers for any failure in performance, damage or injury whatsoever arising from their storage, handling, application or use. These conditions cannot be varied by our staff or agents whether or not they supervise or assist in the use of such goods.

'Murphy' is a registered trade mark.

HSDA Registration No. 7782-1

Made in England by



Murphy Chemical Ltd

Wheathampstead, St Albans, Hertfordshire, England

USA0285A/372/T

Murphy
Slugit
Liquid

Murphy
Slugit
Liquid

Active ingredient: Metaldehyde 20%
Inert ingredient: 80%