

7401-72

09/10/1971

1/3



ferti·lome

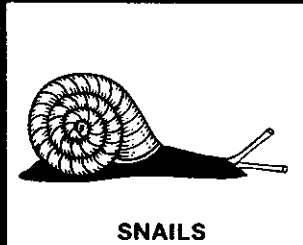


\$1.29

Improved

BUG BAIT

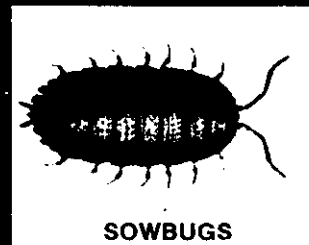
- KILLS SNAILS, SLUGS, PILLBUGS, SOWBUGS, EARWIGS AND ANTS.
- EFFECTIVE NEW FORMULATION AIDS YOU IN SNAIL AND SLUG CONTROL.
- CONTAINS ATTRACTANT TO LURE SNAILS AND SLUGS TO BAIT.



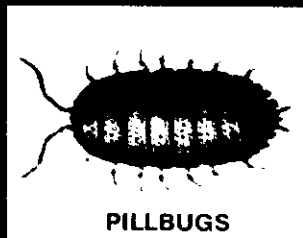
SNAILS



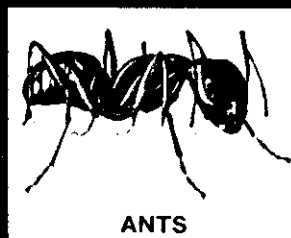
SLUGS



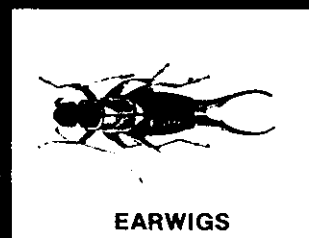
SOWBUGS



PILLBUGS



ANTS



EARWIGS

Active Ingredients:	
Carbaryl (1-Naphthyl N-Methylcarbamate)*	4%
Metaldehyde	1%
Inert Ingredients	95%
Total	100%

NET WEIGHT ONE POUND

WARNING: Keep Out of Reach of Children
See Back Panel for Additional Warnings

2/3

1. WHAT IS THIS PACKAGE FOR?

This new and improved formulation gives you an effective and economical way to kill snails, slugs, pillbugs, sowbugs, earwigs and ants in your flower beds, shrub beds, around building foundations, patio stones and sidewalks.

2. HOW DO YOU USE IT?

Punch out holes in top of can and sprinkle bait lightly on ground in areas to be treated. Apply in late evening as these bugs are mostly late evening and night feeders. Apply around, but not against the stems of desirable plants. Place bait where these pests stay during daylight hours.

Bait areas thoroughly at the beginning of the spring planting season. Repeat at 7-10 day intervals or as necessary to maintain control. For best results areas to be treated should be damp. In dry weather water well before baiting.

Snails and slugs migrate extensively. When invasions from adjacent areas are anticipated, a barrier of the bait will aid in control.

3. HERE ARE THE RESULTS YOU MAY EXPECT!

ferti-lome *Improved* BUG BAIT, used according to directions, protects your plants from damage by the listed bugs. By controlling these unsightly bugs you remove their messy appearance and the unsightly slime trails of snails and slugs.

WARNING: KEEP OUT OF REACH OF CHILDREN AND DOMESTIC ANIMALS. MAY BE FATAL IF SWALLOWED, ABSORBED THROUGH THE SKIN OR INHALED. Do not take internally. Avoid contact with skin, eyes and clothing. Harmful dust. Avoid inhalation of dust.

In case of contact, wash immediately with soap and water. Wash thoroughly after using. Wash hands and face before eating or smoking. Wear regular long sleeved work clothing. Change to clean clothing daily. Wash contaminated clothing with soap and hot water before reuse. Avoid contamination of feed and foodstuffs.

Should poisoning occur, get prompt medical aid.

TO PHYSICIAN: Carbaryl is a moderate, reversible cholinesterase inhibitor. Atropine is antidotal.

Birds feeding on treated area may be killed.

This product is toxic to bees and should not be applied when bees are actively visiting area.

Do not reuse container for any purpose. Destroy empty container.

*Carbaryl Insecticide, SEVIN Reg. Trademark of Union Carbide Corp.

Buyer assumes all risks of use, storage or handling of this material not in strict accordance with directions given herewith.

**VOLUNTARY PURCHASING GROUPS, INC.,
BONHAM, TEXAS**

