



**WHAT IS THIS PACKAGE FOR?**  
 Ferti-lome Wasp & Hornet Jet Spray is a powerful insecticide that kills a wide variety of insects. It is designed for use on outdoor surfaces and is effective against a wide variety of insects including wasps, hornets, roaches, spiders, scorpions, earwigs, fleas, flies, mosquitoes, and ticks. It is also effective against brown dog ticks, millipedes, and ants.

WASPS	MOSQUITOES	CRICKETS
HORNETS	SPIDERS	CLOVER MITES
ROACHES	SCORPIONS	EARWIGS
FLIES	FLEAS	SCOWBUGS, MILLIBUGS
ANTS	BROWN DOG TICKS	MILLIPEDES

**HOW DO YOU USE IT?**  
 Remove protective cap. Hold container in upright position to spray. Press nozzle directly at nests, cracks, crevices or hard to reach locations that usually require bending, crawling or climbing. Spray infested surfaces until wet, moving the spray stream rapidly to prevent excessive wetting of surfaces and waste of material. Direct spray away from people, pets and plants.

**OUTDOOR DIRECTIONS:**  
**WASPS AND HORNETS:** Make application in early morning or evening when pests are at rest or congregating around nests. Aim directly at nests and apply until wet. Wasps and hornets are aggressive insects, especially when disturbed. Spray when they are at rest to assure direct hits.

**ANTS, CRICKETS, EARWIGS, CLOVER MITES, FLEAS, FLIES, MOSQUITOES, ROACHES, SPIDERS, SCOWBUGS, BROWN DOG TICKS, SCORPIONS, MILLIPEDES:** Spray infested areas thoroughly including outside surfaces of screens, doors, window frames, foundations, patios or other places where insects may enter. For ants, spray hills and runways. Repeat as necessary. Do not spray vegetation.

**PET SLEEPING QUARTERS:** Spray quarters thoroughly as needed. Fresh bedding should be placed in quarters after spraying. Do not spray animals.

**HERE ARE THE RESULTS YOU MAY EXPECT!**  
 Ferti-lome Wasp & Hornet Jet Spray makes it easy, convenient and economical to kill nuisance insects, thus permitting you to enjoy your home and outdoor areas to the fullest extent.

**WARNING:** Harmful if swallowed, inhaled, or absorbed through the skin. Avoid breathing spray mist. Contact with skin, eyes or clothing should be avoided. In case of contact, wash immediately with soap and water. Wash thoroughly after use. Keep children off treated areas until thoroughly dry. Avoid contamination of food and foodstuffs. Ground illness, seek prompt medical aid.

**PRECAUTION:** Avoid inhalation of dust.  
 Do not spray humans, livestock or pets.  
 Flammable. Do not use or store near heat or open flame.

**CAUTION:** Contains under pressure. Do not puncture. Exp. Do not use near open flame, fire, heat, or hot surfaces. Keep at room temperature away from direct sunlight, stoves, hot water and other heat. Never use inside, and never use in enclosed areas.

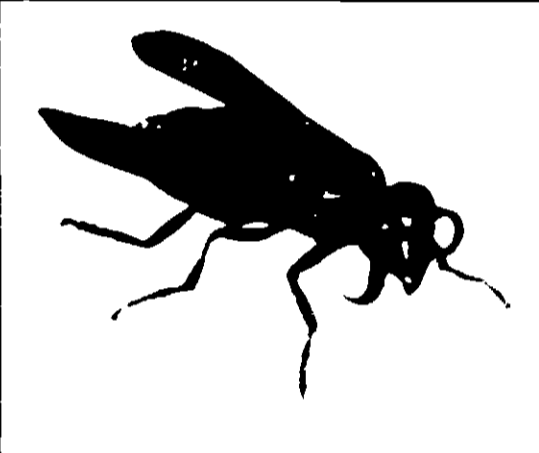
Buy this insecticide only from a licensed dealer or distributor. Do not use if you are allergic to any of the ingredients.

Active ingredient:	
Permethrin (0.5%)	0.5%
Pyrethrin (0.5%)	0.5%
Other ingredients:	99.0%
Total:	100.0%

Manufactured for VOLUNTARY PURCHASING GROUPS, INC.  
 Bonham, Texas

# WASP & HORNET JET SPRAY

\$1.98



- JET STREAM SPRAYS INTO NESTS, CREVICES, HOLES, ETC. FROM UP TO 12 FEET AWAY
- KILLS WASPS AND HORNETS
- KILLS ROACHES, FLIES, ANTS, MOSQUITOES AND SPIDERS

SEE BACK PANEL FOR COMPLETE LIST OF INSECTS  
 DO NOT USE AS A SPACE SPRAY—  
 SPRAY ONLY ON OUTDOOR SURFACES

NET WEIGHT ONE POUND (16 OUNCES)

**WARNING:**  
 Keep Out of Reach of Children  
 See Back Panel for Additional Warnings



**ferti-lome**



# WASP & HORNET JET SPRAY

**\$1.98**



- JET STREAM SPRAYS INTO NESTS, CREVICES, HOLES, ETC. FROM UP TO 12 FEET AWAY
- KILLS WASPS AND HORNETS
- KILLS ROACHES, FLIES, ANTS, MOSQUITOES AND SPIDERS

**SEE BACK PANEL  
FOR COMPLETE LIST OF INSECTS  
DO NOT USE AS A SPACE SPRAY—  
SPRAY ONLY ON OUTDOOR SURFACES**

**NET WEIGHT ONE POUND (16 OUNCES)**

**WARNING:**  
Keep Out of Reach of Children  
See Back Panel for Additional Warnings

**OUTDOOR DIRECTIONS  
WASPS AND HORNETS**

**WARNING:**