

**1. WHAT IS THIS PACKAGE FOR?**

This package of Ierti-Iome **ANT AND ROACH KILLER** may be used as a surface spray or, when fitted with the attached adapter, may be used to spray into cracks, crevices, holes, etc. This highly effective new formulation provides rapid kill of certain crawling and certain flying insects listed below, including those resistant to certain chlorinated hydrocarbons and phosphate insecticides.

**INSECTS THIS PRODUCT KILLS:**

- |            |                 |            |
|------------|-----------------|------------|
| ANTS       | SPIDERS         | MILLIPEDES |
| ROACHES    | CLOVER MITES    | SCORPIONS  |
| FLIES      | CRICKETS        | SILVERFISH |
| MOSQUITOES | SOWBUGS         | EARWIGS    |
| FLEAS      | BROWN DOG TICKS | WATERBUGS  |

**2. HOW TO USE EFFECTIVELY**

Shake well before use. Remove protective cap. Hold container in an upright position. Point nozzle in direction indicated by arrow. Press nozzle. Spray infested surfaces until wet, keeping the spray stream rapidly to prevent excessive wetting of surfaces, and avoid contact with people, plants and pets.

**TO KILL ANTS, MOSQUITOES, CRICKETS, SILVERFISH, SPIDERS, SCORPIONS and WATERBUGS:**

**GENERAL SPRAY:** Spray around baseboards, behind and beneath cabinets, refrigerators, wall areas, in and around waste containers and other places where these insects hide. Repeat as needed.

**NESTS, CRACKS, CREVICES, HOLES, ETC.:** Insert plastic tube found on side of can into nozzle, insert tube into nests, cracks, crevices, holes and spray. Repeat as needed.

**DIRECTIONS FOR USE OUTDOORS:**

To kill ANTS, CRICKETS, SILVERFISH, FLIES, FLEAS, SOWBUGS, MOSQUITOES, CLOVER MITES, SCORPIONS AND WATERBUGS:

Spray lawn, garden, flower beds, porch or other places where insects may enter. For ants, spray hills and runways. Repeat as necessary. Do not spray vegetation.

**NESTS, CRACKS, CREVICES, HOLES, ETC.:** Insert plastic tube found on side of can into nozzle, insert tube into nests, cracks, crevices, holes and spray. Repeat as necessary.

To kill FLEAS AND BROWN DOG TICKS: Spray sleeping quarters of pets, around baseboards, window and door frames, wall cracks and local areas of floor. Repeat as needed. Fresh bedding should be placed in animal quarters after spraying. Do not spray animals.

**3. HERE ARE THE RESULTS YOU MAY EXPECT!**

This new and unique package of Ierti-Iome **ANT AND ROACH KILLER** with its removable plastic nozzle makes it easy, convenient and economical to control ANTS AND ROACHES in their hiding and nesting places. These dual purpose features permit you to enjoy your home and outdoor areas to the fullest extent.

**WARNING:** Harmful if swallowed, inhaled or absorbed through the skin. Avoid breathing spray mist. May be absorbed through skin. Contact with skin, eyes or clothing should be avoided. In case of contact, wash immediately with soap and water. Avoid contamination of feed and foodstuffs. If poisoning should occur, get prompt medical aid.

Do not allow children in treated areas until surfaces are dry. Provide adequate ventilation of treated area. Wash thoroughly after using.

Contents under pressure. Do not puncture. Exposure to high temperature may cause bursting. Keep at room temperature away from direct sunlight, radiators, stoves, hot water and other heat. Never dispose of container in fire or incinerator.

**TO PHYSICIAN:** Atropine sulfate is antidotal.

Do not use in commercial food preparation areas or in edible products areas of food processing plants.

Remove pets and cover fish bowls before spraying. Do not spray humans, livestock or pets.

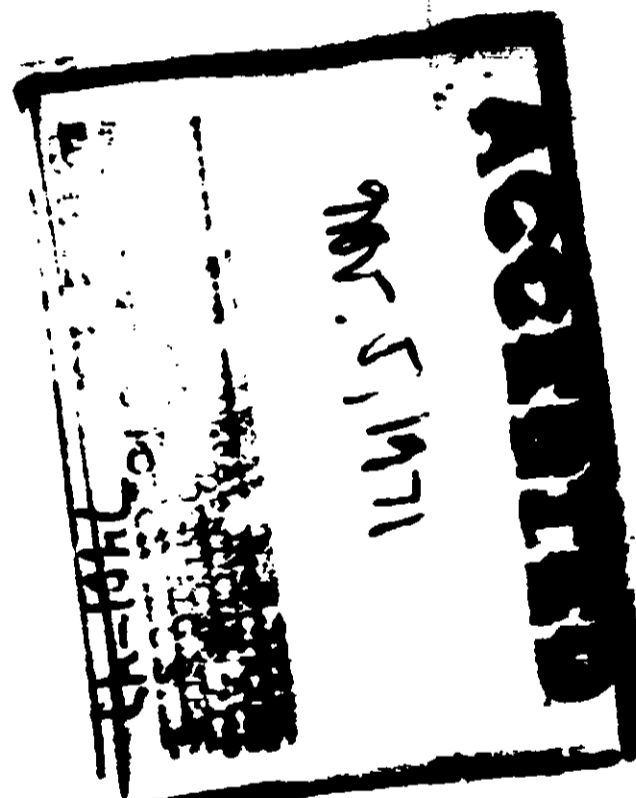
**RESTRICTIONS:** Do not apply to rugs, carpets, draperies, wall paper, or similar materials that may be stained. Avoid excessive wetting of plastic, rubber and asphalt surfaces such as tiles and floor coverings.

**FLAMMABLE:** Do not use or store near heat or open flame.

**NON-WARRANTY:** Follow directions carefully. Timing and method of application, weather and crop conditions, mixtures with other chemicals not specifically recommended, and other influencing factors in the use of this product are beyond the control of the seller. Buyer assumes all risks of use, storage or handling of this material not in strict accordance with directions given herewith.

|                                     |        |
|-------------------------------------|--------|
| Active Ingredients:                 |        |
| o-Isopropoxyphenyl methylcarbamate* | 0.5%   |
| Petroleum Distillate                | 69.0%  |
| Inert Ingredients:                  | 30.5%  |
| Total                               | 100.0% |

EPA Reg. No. 7401-47      \*U.S. PATENT NO. 3,111,539      14M-4-101  
**MANUFACTURED FOR VOLUNTARY PURCHASING GROUPS, INC. BONHAM, TEXAS**



**KILLER**

- KILLS COMMON HOUSEHOLD PESTS: ANTS AND ROACHES
- KILLS RESISTANT STRAINS: GERMAN AND CRACK DOGS
- RAPID INSECT KILLING POWER: WORKS IN WEEKS
- MAY BE USED IN DOGS AND CATS QUARTERS
- UNIQUE ADAPTER PERMITS SPRAYING INTO NESTS, CRACKS, CREVICES, HOLES, ETC.

SPRAY ONLY ON SURFACES

NET WEIGHT ONE POUND (16 OUNCES)

**WARNING: KEEP OUT OF REACH OF CHILDREN. SEE BACK PANEL FOR ADDITIONAL WARNINGS.**





ferti-lome



1. WHAT IS THIS PACKAGE FOR?

This package of ferti-lome ANT AND ROACH KILLER may be used as a surface spray or, when fitted with the attached adapter, may be used to spray into cracks, crevices, holes, etc. This highly effective new formulation provides rapid kill of certain crawling and certain flying insects listed below, including those resistant to certain chlorinated hydrocarbons and phosphate insecticides.

INSECTS THIS PRODUCT KILLS:

|            |                 |            |
|------------|-----------------|------------|
| ANTS       | SPIDERS         | MILLIPEDES |
| ROACHES    | CLOVER MITES    | SCORPIONS  |
| FLIES      | CRICKETS        | SILVERFISH |
| MOSQUITOES | SOWBUGS         | EARWIGS    |
| FLEAS      | BROWN DOG TICKS | WATERBUGS  |

2. HOW DO YOU USE IT?

Shake well before use. Remove protective cap. Hold container in an upright position. Point nozzle in direction indicated by arrow. Press nozzle. Spray infested surfaces until wet, moving the spray stream rapidly to prevent excessive wetting of surfaces and waste of material. Point spray away from people, plants and pets.

DIRECTIONS FOR USE INDOORS:

To kill ANTS, COCKROACHES, CRICKETS, SILVERFISH, SPIDERS, SCORPIONS and WATERBUGS

**SURFACE SPRAY** — Spray around baseboards, behind and beneath cabinets, refrigerators, sinks, stoves, in and around waste containers and other places where these insects hide. Repeat as needed.

**NESTS, CRACKS, CREVICES, HOLES, ETC.** Insert plastic tube found on side of can into nozzle, insert tube into nests, cracks, crevices, holes and spray. Repeat as needed.

DIRECTIONS FOR USE OUTDOORS:

To kill ANTS, CRICKETS, EARWIGS, FLIES, FLEAS, SOWBUGS, MOSQUITOES, CLOVER MITES, SCORPIONS AND MILLIPEDES

**SURFACE SPRAY** — Spray treated areas thoroughly including outside surfaces of screens, doors, window frames, foundations, patios or other places where insects may enter. For ants, spray hills and runways. Repeat as necessary. Do not spray vegetation.

**NESTS, CRACKS, CREVICES, HOLES, ETC.** Insert plastic tube found on side of can into nozzle, insert tube into nests, cracks, crevices, holes and spray. Repeat as necessary.

To kill FLEAS AND BROWN DOG TICKS. Spray sleeping quarters of pets, around baseboards, window and door frames, wall cracks and local areas of floor. Repeat as needed. Fresh bedding should be placed in animal quarters after spraying. Do not spray animals.

3. HERE ARE THE RESULTS YOU MAY EXPECT:

This new and unique package of ferti-lome ANT AND ROACH KILLER with its removable plastic nozzle makes it easy, convenient and economical to control ANTS AND ROACHES in their hiding and nesting places. These dual purpose features permit you to enjoy your home and outdoor areas to the fullest extent.

**WARNING:** Harmful if swallowed, inhaled or absorbed through the skin. Avoid breathing spray mist. May be absorbed through skin. Contact with skin, eyes or clothing should be avoided. In case of contact wash immediately with soap and water. Avoid contamination of feed and foodstuffs. If poisoning should occur, get prompt medical aid.

Do not allow children in treated areas until surfaces are dry. Provide adequate ventilation of treated area. Wash thoroughly after using.

Contents under pressure. Do not puncture. Exposure to high temperature may cause bursting. Keep at room temperature away from direct sunlight, radiators, stoves, hot water and other heat. Never dispose of container in fire or incinerator.

**TO PHYSICIAN:** Atropine sulfate is antidotal.

Do not use in commercial food preparation areas or in edible products areas of food processing plants.

Remove pets and cover fish bowls before spraying. Do not spray humans, livestock or pets.

**RESTRICTIONS:** Do not apply to rugs, carpets, draperies, wall paper, or similar materials that may be stained. Avoid excessive wetting of plastic, rubber and asphalt surfaces such as tiles and floor coverings.

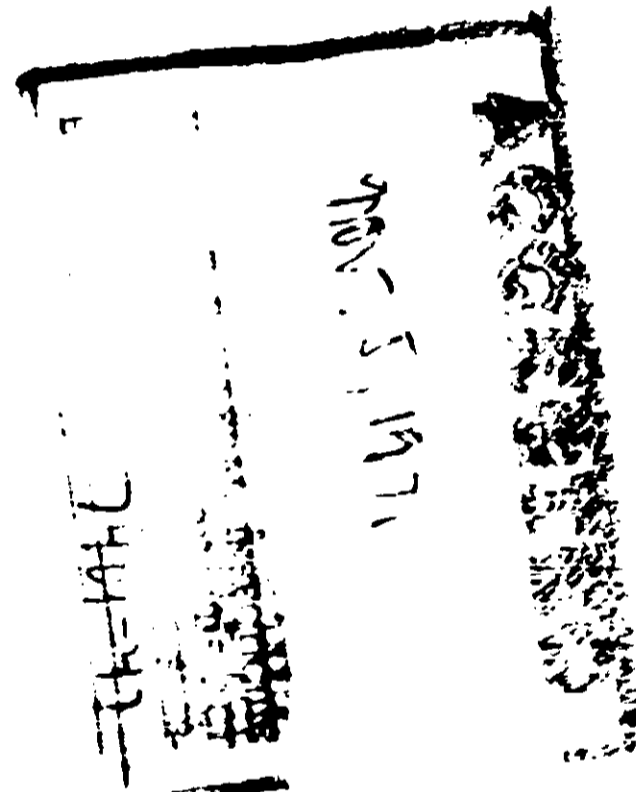
**FLAMMABLE:** Do not use or store near heat or open flame.

**NON-WARRANTY:** Follow directions carefully. Timing and method of application, weather and crop conditions, mixtures with other chemicals, not specifically recommended, and other influencing factors in the use of this product are beyond the control of the seller. Buyer assumes all risks of use, storage or handling of this material not in strict accordance with directions given herewith.

|                                    |       |
|------------------------------------|-------|
| Active Ingredients                 |       |
| o-Isopropoxyphenyl methylcarbamate | 0.5   |
| Petroleum Distillate               | 64.0  |
| Inert Ingredients                  | 31.5  |
| Total                              | 100.0 |

EPA Reg. No. 7401-11      U.S. PATENT NO. 3,111,549      14M 117

MANUFACTURED FOR VOLUNTARY PURCHASING GROUPS, INC. BONHAM, TEXAS



# ANT & ROACH KILLER



\$1.98

- KILLS COMMON HOUSE ANTS, PAVEMENT ANTS AND LITTLE BLACK ANTS
- KILLS RESISTANT STRAINS OF ROACHES (GERMAN AND BROWN BANDED)
- RAPID INSECT-KILLING POWER LASTS FOR WEEKS
- MAY BE USED INDOORS AND OUT-DOORS
- UNIQUE ADAPTER PERMITS SPRAYING INTO NESTS, CRACKS, CREVICES, HOLES, ETC.

SPRAY ONLY ON SURFACES — DO NOT USE AS A SPACE SPRAY

NET WEIGHT ONE POUND (16 OUNCES)

**WARNING: KEEP OUT OF REACH OF CHILDREN. SEE BACK PANEL FOR ADDITIONAL WARNINGS.**

