

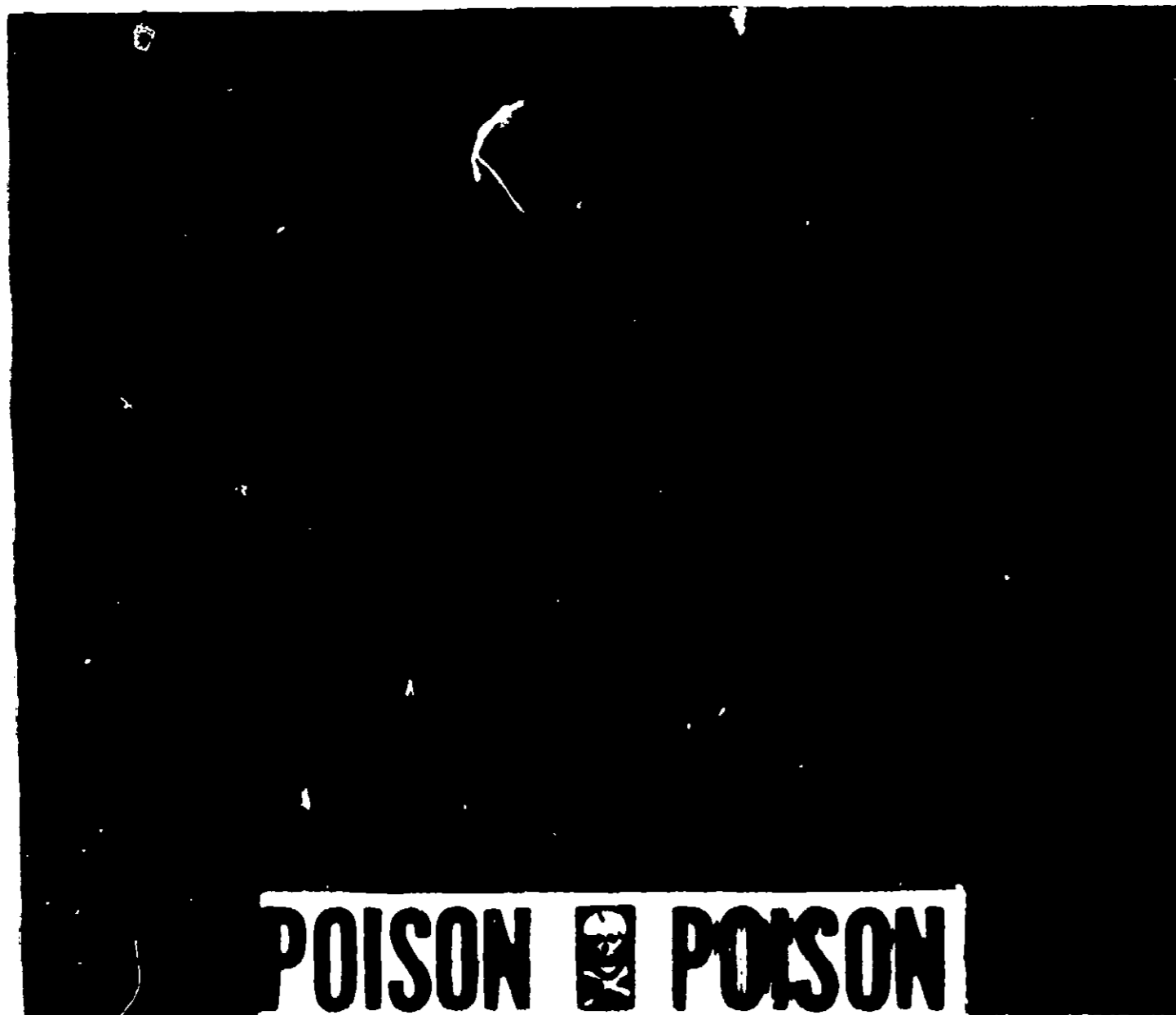
and other
similar areas

Large area
dead weeds in
cracks and
places, spray
killed. This
is desirable
desirable wild
in grass as
Bermuda, which
wild grass

erson grass,
also Winter
don't have to
test and most



ferti·lome



POISON  **POISON**

WARNING: ferti-lome WEED & WILD GRASS KILLER is a poisonous chemical and should be handled carefully. It may be fatal if swallowed. Avoid breathing spray mist. Avoid contact with skin, eyes or clothing. Wash thoroughly after using. Keep spray away from evergreens, shrubs and flowers. Don't use on new Bermuda grass lawns with less than 3 months growth. Keep away from children and domestic animals. Keep children and animals off treated areas. Do not use ferti-lome WEED & WILD GRASS KILLER on creeping bent lawns.

DO NOT contaminate water used by wildlife, or aquatic life, or water used for domestic or irrigation purposes.

DO NOT Reuse container. Destroy when empty.

ANTIDOTE: Call a physician immediately. Give a tablespoonful of salt in a glass of warm water and repeat until vomit is clear. Then 2 tablespoonsful of Epsom Salts or Milk of Magnesia in water and plenty of milk and water. Have patient lie down and keep quiet.

NON-WARRANTY: Follow directions carefully. Timing and method of application, weather and crop conditions, mixtures with other chemicals not specifically recommended, and other influencing factors in the use of this product are beyond the control of the seller. Buyer assumes all risks of use, storage or handling of this material not in strict accordance with directions given herewith.

USDA REG. NO. 7401-5

1. WHAT IS THIS PACKAGE FOR?

This is a newer and more effective selective post-emergence weedkiller developed to kill Crabgrass, Dallis Grass, Johnson Grass, Sandbur (sandspur), Nutgrass, Chickweed, Bur Clover, Barnyard Grass, Water Grass, Goose Grass, Nutsedge, Ragweed, Foxtail and Puncture Vine.

2. HOW DO YOU USE IT?

Be sure soil is moist before treatments. During dry spells, water thoroughly before making applications. Normal rainfall following application will not adversely affect results. Resume keeping soil moist day after application, especially during hot dry weather.

LAWNS: Best results are obtained on young, actively growing weeds at temperatures above 70° F. Mix 4 teaspoons in 1 gallon of water and apply to 100 sq. ft. (or 1 pint in 30 gallons of water applied to 3000 sq. ft.) Spray thoroughly to wet all undesirable weeds. Use twice the above specified rate if temperature remains below 70° F. as in spring and fall. Two treatments are needed at 5 to 7 day intervals.

To control new growth later in season, repeat as necessary. Lawn may be reseeded when crabgrass is dead. Do not over-spray in spots. New turf should not be treated until after the third mowing.

NOTE: Do not use on St. Augustine, Carpet, Centipede or Dichondra grass lawns.

3. HERE ARE THE RESULTS YOU MAY EXPECT!

Lawns free of Crabgrass, Dallis Grass and other listed weeds may be obtained with this effective and economical weed killer.

CAUTION: Keep out of reach of children. Harmful if swallowed. Avoid contact with skin. Avoid breathing spray mist. Wash hands after using. Do not contaminate feed or food-stuffs. Keep children and domestic animals off treated areas until this material has been washed into the soil.

Do not spray or allow to drift onto desirable vegetation.

Do not store near fertilizers, fungicides, insecticides or seeds.

Do not contaminate waters used for domestic consumption, or by animals, wildlife and aquatic life, or for irrigation purposes.

ANTIDOTE: If taken internally, induce vomiting and call a physician at once.

Food utensils such as teaspoons or measuring cups should not be used for food purposes after use with pesticides.

Do not reuse container for any purpose. Destroy empty container.

Buyer assumes all risks of use, storage or handling of this material not in strict accordance with directions given here-with.

14M 2-22

EPA Reg. No. 7401-23

VOLUNTARY PURCHASING GROUPS, INC.
BONHAM, TEXAS



ferti·lome



CRABGRASS & DALLIS GRASS KILLER

- KILLS CRABGRASS, DALLIS GRASS, JOHNSON GRASS, SANDBUR, NUTGRASS, BUR CLOVER, CHICKWEED, BARNYARD GRASS AND CERTAIN OTHER NUISANCE GRASSES IN BERMUDA, BLUEGRASS AND ZOYSIA GRASS LAWNS
- 4 TEASPOONS MAKE 1 GALLON OF SPRAY



NET CONTENTS 16 FL. OZ. (ONE PINT)

CAUTION KEEP OUT OF REACH OF CHILDREN
SEE BACK PANEL FOR ADDITIONAL CAUTIONS

7401-23

