

7430 1075-64 16

FRONT PANEL

ACCEPTED
MAY 11 1980
Under the Federal Insecticide
Fungicide, and Rodenticide Act
as amended, for the pesticide
registered under
EPA Reg. No. 7368-67

AQUA CHEM™
Balanced for Clean Pools

GRANULAR CHLORINIZOR

FOR EVERYDAY USE

ACTIVE INGREDIENT: *Calcium Hypochlorite65%
INERT INGREDIENTS:35%
***Available Chlorine 65%**

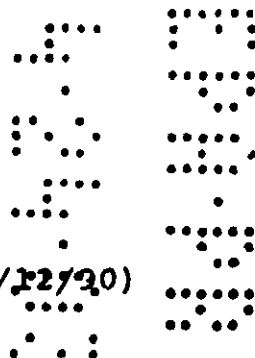
KEEP OUT OF REACH OF CHILDREN

DANGER: Highly Corrosive.
Read Additional Precautions on Back and Side Panel.

NET WT *

ROUTINE CHLORINATOR

NOTE:	* WTS.	LABEL CODE	
	25 LB	60-L2525	9/90
	50 LB	60-L2526	9/90
	75 LB	60-L2527	9/90
	100 LB	60-L2528	9/90


 (4/22/90)

BACK PANEL (Column 1)

PRODUCT DESCRIPTION: Aqua ChemTM Granular Chlorinizer is a convenient and economical source of chlorine for routine sanitizing or for periodic superchlorinating of your pool. When used regularly as part of a complete maintenance program, it will help prevent the growth of harmful algae and micro-organisms. These directions cover routine chlorinating and shock treatment of your pool under normal conditions. Sunlight, rainfall, temperature, number of swimmers and frequency of pool use all affect the rate at which unsanitary pool water conditions develop. Adjust the frequency of applications accordingly.

DIRECTIONS FOR USE

It is a violation of Federal Law to use this product in any manner inconsistent with its labeling.

IMPORTANT NOTES

1. When using other Aqua Chem products, as outlined in directions for Aqua Chem Granular Chlorinizer always follow label directions for those products.
2. Aqua Chem Granular Chlorinizer may cause damage to pool finish or materials such as colored plaster, vinyl, wood or fiberglass pool surfaces. This product also may cause discoloration due to its effect on mineral deposit, especially copper. If you are uncertain of the materials composing your pool, check with the manufacturer.

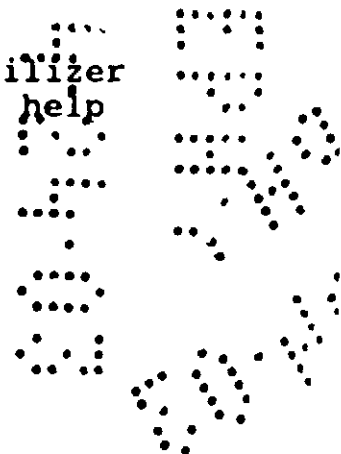
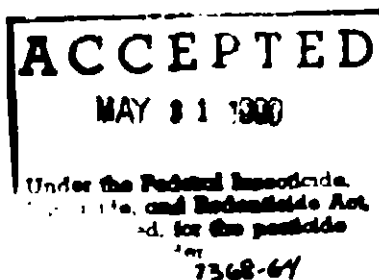
BEFORE YOU BEGIN

1. Make sure all pool equipment is working properly, including pump, filter, skimmer and heater. Backwash pool filter following manufacturer's directions.
2. Check pH (acidity/alkalinity balance) with an Aqua Chem Test Kit following kit directions. Adjust pH to 7.2-7.6, if necessary, by adding Aqua Chem pH Decreaser to lower pH, or by adding Aqua Chem pH Add to raise pH. Be sure to follow label directions.

NOW USE AQUA CHEM GRANULAR CHLORINIZER

FOR ROUTINE SANITIZING

1. If your pool water is not stabilized, add Aqua Chem Stabilizer following label directions. Addition once a season will help reduce chlorine loss from sunlight and other factors.

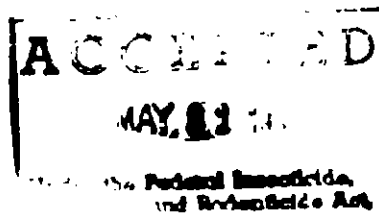


BACK PANEL (Column 1) (Cont.)

2. Check residual chlorine level with an Aqua Chem Test Kit, following kit directions. Desirable range is 1.0-1.5 parts per million (ppm) for stabilized pools.
3. To raise residual chlorine level, add Aqua Chem Granular Chlorinizer at a rate of 2-3 ounces per 10,000 gallons of water by spreading granules over pool surface at the deep end of pool. As an alternate application method, mix 2-3 ounces of Granular Chlorinizer per gallon of water in a plastic container. Wait until all granules dissolve before pouring mixture into deep end of pool.
4. Avoid spilling either granules or concentrated liquid mixture on colored plaster, vinyl, wood or fiberglass pool surfaces. Discoloration or damage result. If you are unsure of the materials composing your pool, check with the manufacturer.
5. Operate recirculating pump while adding product and for at least one hour afterward to ensure even distribution of chemical in water.
6. Recheck residual chlorine with a test kit. If level is below 1.0 ppm, repeat application until desired chlorine level of 1.0-1.5 ppm is achieved.
7. Do not allow swimmers in pool until residual chlorine level is no more than 3.0 ppm as measured by a test kit.
8. To maintain desirable chlorine levels, add Aqua Chem Granular Chlorinizer at a rate of 2-3 ounces per 10,000 gallons of water every other day or whenever residual chlorine level drop below 1.0-1.5 ppm as measured by a test kit. NOTE: Sunlight, rainfall, temperature, number of swimmers and frequency of pool use all affect the rate of chlorine loss. Adjust sanitizing applications accordingly.

FOR SUPERCHLORINATION

1. For maximum effectiveness, superchlorination (shock treatment) should be done in the evening. For pools not treated with stabilizer, add Aqua Chem Granular Chlorinizer at a rate of 20 ounces per 10,000 gallons of water by spreading granules over pool surface at the deep end. Wear goggles or face shield and rubber gloves. Avoid contact with skin, eyes and clothing. Resume regular chlorine treatments when residual chlorine drops to 0.6-1.0 ppm as measured with a test kit.



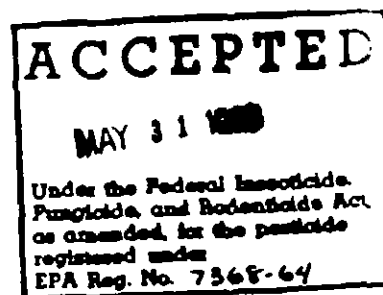
BEST AVAILABLE COPY

7368-64

BACK PANEL (Column 2)

2. To shock treat pools treated with stabilizer, add 10 ounces of Aqua Chem Granular Chlorinizer per 10,000 gallons of water as directed above. Resume regular chlorine treatments when residual chlorine drops to 1.0-1.5 ppm, as measured with a test kit.
3. Operate recirculating pump while adding product and for at least one hour afterward to ensure even distribution of chemical in water.
4. One day after the shock treatment, brush pool walls and bottom to dislodge dead algae, then vacuum to remove debris.
5. Do not allow swimmers in pool until residual chlorine level is no more than 3.0 ppm as measured by at test kit.

If you have any questions or comments about Aqua Chem Products or their use, please call us toll free. In the continental U.S. Call 1-800-252-POOL. Ask for your free pool care booklet.



STATEMENT OF PRACTICAL TREATMENT (FIRST AID)

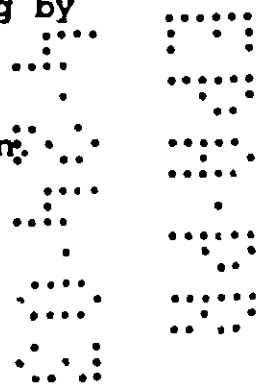
IF CONTACT WITH EYES: Flush with cold water for at least 15 minutes. Get medical attention.

IF CONTACT WITH SKIN: Brush off excess chemical and flush skin with cold water for at least 15 minutes. If irritation persists, get medical attention.

IF SWALLOWED: Feed victim bread soaked in milk, followed by olive oil or cooking oil. Do not induce vomiting. Take immediately to a hospital or physician. If vomiting occurs, administer additional water. If unconscious, or in convulsions, take immediately to a hospital. Do not attempt to induce vomiting or give anything by mouth to an unconscious person.

IF INHALED: Remove to fresh air. If signs of irritation or discomfort occur, take immediately to a hospital or physician.

IN THE EVENT OF A MEDICAL EMERGENCY
CALL COLLECT: 1-303-623-5716



BACK PANEL (Column 2) (Cont.)

PRECAUTIONARY STATEMENTS: HAZARDS TO HUMANS AND DOMESTIC ANIMALS

DANGER: Highly corrosive. Causes skin and eye damage. May be fatal if swallowed. Irritating to nose and throat. Wear goggles or face shield and rubber gloves when handling. Avoid breathing dust. Remove and wash contaminated clothing and shoes before reuse.

ENVIRONMENTAL HAZARDS: This product is toxic to fish. Do not discharge into lakes, streams, ponds or public waters unless in accordance with NPDES permit. For guidance, contact the regional office of the EPA.

PHYSICAL AND CHEMICAL HAZARDS/STRONG OXIDIZING AGENT: Mix only with water. Use only a clean, dry utensil made of metal or plastic each time Aqua Chem Granular Chlorinizer is taken from the container. Do not add this product to any dispensing device containing remnants of any other product. Such use may cause violent reaction leading to fire or explosion. Contamination with moisture, acids, organic matter, other chemicals or easily combustible materials such as petroleum or paint products may start a chemical reaction with generation of heat, liberation of hazardous gases and possible generation of a fire or explosion. In case of contamination or decomposition, do not reseal container. If possible, isolate container in open air or well-ventilated area. Flood with large volumes of water, if necessary.

NOTE: This product is sold by weight. Settling of contents during storage and handling will occur.

EPA REG NO 7368-64 EPA EST NO 748-WV-1

STORAGE AND DISPOSAL/READ BEFORE USING

Keep in original container in a cool, dry place.

Keep container closed when not use.

Keep away from heat sources, sparks, open flames and lighted tobacco products.

Use only a clean, dry utensil made of metal or plastic each time Aqua Chem Granular Chlorinizer is taken from the container.

Do not reuse container. Residual material remaining in empty drum can react to cause fire. Thoroughly flush empty container with water then destroy by placing in trash collection.

Wastes resulting from the use of this product may be disposed of on site or at an approved hazardous waste facility. Do not contaminate water, food, or feed by storage or disposal.

ACCEPTED

MAY 8 1964

Under the Federal Insecticide, Fungicide, and Rodenticide Act or amended for the pesticide registered under EPA Reg. No. 7368-64

BEST AVAILABLE COPY

BACK PANEL (Column 3)

IN CASE OF FIRE - Drench with water. Aqua Chem Granular Chlorinizer supplies oxygen; therefore, attempts to smother fire with a wet blanket, carbon dioxide, or a dry chemical extinguisher are ineffective.

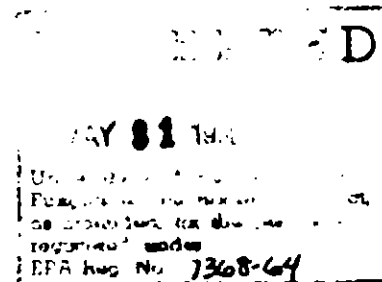
IN CASE OF SPILL OR LEAK - Use extreme caution. Contamination may cause fire or violent reaction. If fire or reaction occurs in area of spill, douse with plenty of water. Otherwise, sweep up spilled material, using a clean, dry shovel and broom and dissolve spilled material in water. Then immediately use solution as directed.

**Emergency Telephone Number
Natrium, WV. (304) 843-1300**

(UPC CODE)

**Distributed By:
GROW GROUP, INC.
2501 Malt Avenue
City of Commerce, CA 90040**

(LABEL CODE)



NOTE: Need panel with

- o DOT oxidizer symbol
- o Calcium Hypochlorite, Hydrated
UN 2880 RQ