

# TECHNICAL DATA

-2-

INTEXSAN LB - MB

## SUBSTANTIVITY

INTEXSANS LB and MB are absorbed from solution by many ordinary materials including the natural and synthetic textile fibers, certain metals, wood, and plastic. These coated surfaces, even after washing and drying, often possess some resistance to the growth of micro-organisms.

## STABILITY

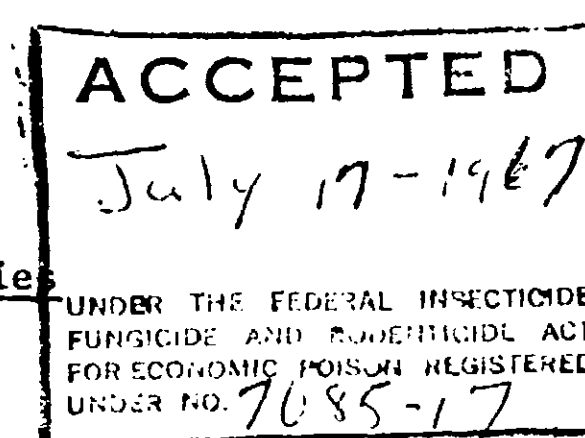
In concentrated solutions, use-solutions, and in formulations, these materials are stable under normal storage conditions. They retain their chemical, physical, and bacteriological properties for several years.

## SURFACE ACTIVITY

INTEXSANS LB and MB are surface-active agents which reduce the surface tension and interfacial tension of aqueous solutions. They also possess good wetting and penetrating properties.

### SURFACE TENSION REDUCTION (dynes/cm)

% concentration (100% active basis)	LB series	MB series
0.1	37	39
0.01	39	42

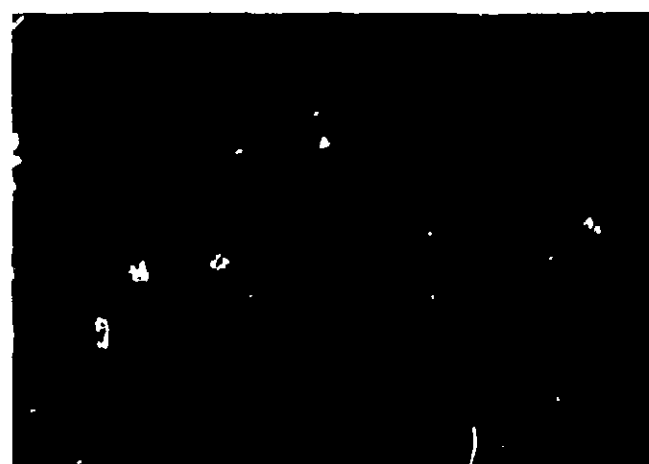


*Comment*

## BACTERIOLOGY

The germicidal activity of INTEXSANS LB and MB is relatively non-selective being effective against most classes and groups of micro-organisms, including bacteria, fungi, yeasts and algae. This activity is not affected by pH and usually is enhanced by its increase. Also, elevated temperatures will increase the rate of activity.

INTEXSAN LB and MB will maintain their bacteriological activity in the presence of high concentrations of Ca and Mg ions. This desirable characteristic accounts for their extreme germicidal effectiveness in hard water, where the action of many other quaternaries is reduced.



## Butcher's Clockwork Disinfectant Deodorizer Sanitizer

### USE DIRECTIONS:

**HOUSEHOLD** For sanitizing and disinfecting previously cleaned floors, walls and inanimate hard surfaces. For Schools, Homes, Locker Rooms, Garbage Pails, Sink Tops, Corridors, Classrooms, Offices and Shower Stalls. Apply solution with mop or cloth. Sanitize with 1 ounce of Clockwork to 4 gallons of water. Disinfect with 3 ounces of Clockwork to 5 gallons of water. Kills Staphylococcus aureus and Salmonella choleraesuis at 3 ounces of Clockwork to 5 gallons of water.

**HOSPITALS — DISINFECTING** For floors, walls and other hard surfaces. In Nursing Homes, Institutions, as well as Sink Tops, Garbage Pails, Telephones and Restrooms, use Clockwork at 3½ ounces per 5 gallons of water. At this level Clockwork will be effective against Pseudomonas aeruginosa PRD-10.

**FOOD PROCESSING EQUIPMENT** For sanitization of previously cleaned food processing equipment and food utensils dilute 1 ounce of Clockwork per 4 gallons of water to provide 200 ppm of active quaternary. Apply with cloth or brush or immerse articles completely in sanitizing solution. At this level, no potable water rinse is required.

**DAIRIES** To sanitize previously cleaned dairy equipment such as tanks, pails, sinks, and milk cans, apply sanitizing solution containing 1 ounce of Clockwork to 4 gallons of water (200 ppm). At this level, no potable water rinse is required. Follow recommendations of local health board.

**COLD DISINFECTION** For disinfection of previously cleaned surgical instruments, barber tools and dental equipment, simply submerge instruments into solution containing 1½ ounces of Clockwork per gallon of water for 10 minutes.

**RESTAURANT AND BAR RINSE** Dishes, glassware, silverware, cooking utensils; wash with soap or synthetic detergent; rinse thoroughly and immerse in a sanitizing solution containing 1 ounce of Clockwork to 4 gallons of water. No terminal potable water rinse is required.

Rinse empty container thoroughly with water and discard.

**THE BUTCHER POLISH CO.** Boston, Mass. 02148

