

7173-287

8/1/2013

1/12



UNITED STATES ENVIRONMENTAL PROTECTION AGENCY  
WASHINGTON, D.C. 20460

OFFICE OF CHEMICAL SAFETY  
AND POLLUTION PREVENTION

Mr. Thomas Schmit  
Liphatech, Inc.  
3600 W. Elm St.  
Milwaukee, WI 53209

AUG 01 2013

Dear Mr. Schmit:

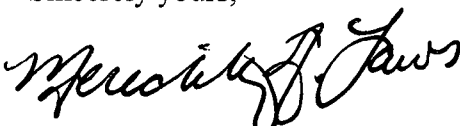
Subject: Labeling amendment to Chlorophacinone Bait Station to add  
6 optional graphics.  
EPA Registration No. 7173-287  
Submission Date: May 9, 2013

The labeling referred to above, submitted in connection with registration under the Federal Insecticide, Fungicide, and Rodenticide Act (FIFRA), as amended, is acceptable.

**Note:** Should you wish to add a reference to the company's website on your label, please be aware that the website becomes labeling under the Federal Insecticide Fungicide and Rodenticide Act and is subject to review by the Agency. If the website is false or misleading, the product would be misbranded and unlawful to sell or distribute under FIFRA section 12(a)(1)(E). 40 CFR 156.10(a)(5) list examples of statements EPA may consider false or misleading. In addition, **regardless of whether a website is referenced on your product's label**, claims made on the website may not substantially differ from those claims approved through the registration process. Therefore should the Agency find or if it is brought to our attention that a website contains false or misleading statements or claims substantially differing from the EPA approved registration, the website will be referred to the EPA's Office of Enforcement and Compliance Assurance.

A stamped copy is enclosed for your records. Please submit one (1) final printed copy for the above mentioned label before releasing the product for shipment. If you have any questions regarding this label, please contact Jennifer Gaines at (703) 305-5967.

Sincerely yours,

*for*   
for John Hebert  
Product Manager (07)  
Insecticide-Rodenticide Branch  
Registration Division (7505P)

# Chlorophacinone Bait Station

**THIS BAIT STATION IS NOT TAMPER RESISTANT.**  
Use indoors only in areas inaccessible to  
children and pets.

**ACCEPTED**  
**AUG 01 2013**  
Under the Federal Insecticide,  
Fungicide, and Rodenticide Act,  
as amended, for the pesticide  
Registered under  
EPA Reg. No. **7173-287**

**KILLS HOUSE MICE**

Active Ingredient: chlorophacinone .....	0.005%
Other Ingredients .....	<u>99.995%</u>
Total .....	100.000%

EPA Reg. No. 7173-287

EPA Est. No. 7173-WI-1

**KEEP OUT OF REACH OF CHILDREN**

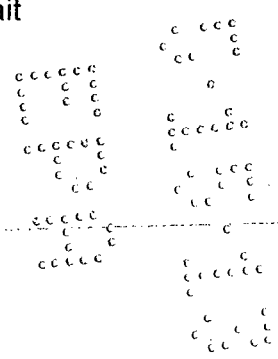
## **CAUTION:**

See side panel for additional precautionary statements.

### **Net Weight:**

- 1 disposable bait station containing 0.7 oz. (20 g) bait  
up to
- 22 disposable bait stations containing 15.5 oz. (440 g) bait

(Liphatech Logo)  
Liphatech, Inc.  
3600 West Elm Street  
Milwaukee, WI 53209  
414-351-1476



3/12

**PRECAUTIONARY STATEMENTS**

Hazard to Humans and Domestic Animals

**CAUTION:** Keep away from children, domestic animals and pets. Harmful if swallowed or absorbed through the skin because it may reduce the clotting ability of blood and cause bleeding. Avoid contact with eyes, skin or clothing. Wear gloves when retrieving dead animals. Wash arms, hands and face with soap and water after applying and before eating and smoking.

**FIRST AID:** Have this label with you when obtaining treatment advice.

**If swallowed:** Call a poison control center or doctor immediately for treatment advice. Have person sip a glass of water if able to swallow. Do not induce vomiting unless told to do so by the poison control center or doctor. Do not give anything by mouth to an unconscious person.

**If in eyes:** Hold eye open and rinse slowly and gently with water for 15-20 minutes. Remove contact lenses, if present, after first 5 minutes, then continue rinsing eye. Call a poison control center or doctor for treatment advice.

**If on skin or clothing:** Take off contaminated clothing. Rinse skin immediately with plenty of water for 15-20 minutes. Call a poison control center or doctor for treatment advice.

**Note to Physician or Veterinarian:** Contains chlorophacinone, an anticoagulant. For humans or dogs that have ingested this product, or have obvious poisoning symptoms (bleeding) or prolonged prothrombin times, give Vitamin K1 by intramuscular or oral administration. Check prothrombin time every 3 days until values return to normal.

**ENVIRONMENTAL HAZARDS:** This product is extremely toxic to fish and wildlife. Predatory and scavenging mammals and birds might be poisoned if they feed upon animals that have eaten the bait. Do not apply directly to water.

**STORAGE AND DISPOSAL**

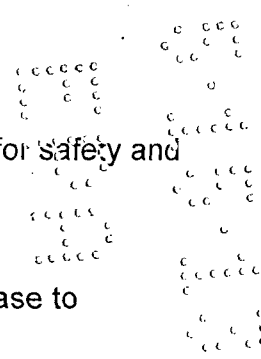
This is a nonrefillable container. Pesticide storage: Store in original container in a cool, dry place inaccessible to children and pets. Pesticide disposal and container handling: If empty: Do not reuse or refill this container. Place in trash or offer for recycling if available. If partly filled: Call your local solid waste agency for disposal instructions. Never place unused product down any indoor or outdoor drain.

**WARRANTY:** To the extent consistent with applicable law, seller makes no warranty, expressed or implied, concerning the use of this product other than indicated on the label. Buyer assumes all risk of use and/or handling of this material when such use and/or handling is contrary to label instructions.

**ALTERNATE WARRANTY STATEMENTS:**

To the extent consistent with applicable law, buyer assumes all responsibility for safety and use not in accordance with directions.

If for any reason you are not satisfied with this product, mail us proof of purchase to obtain full refund of your purchase.



4/12

**DIRECTIONS FOR USE:** It is a violation of Federal law to use this product in a manner inconsistent with its labeling.

**READ THIS LABEL** and follow all use directions and use precautions.

**USE RESTRICTIONS: THIS BAIT STATION IS NOT TAMPER-RESISTANT. DO NOT USE THIS PRODUCT OUTDOORS, OR IN AREAS ACCESSIBLE TO CHILDREN, PETS, DOMESTIC ANIMALS, OR NONTARGET WILDLIFE.** This product may only be used to control house mice inside homes, industrial, commercial, agricultural and public buildings. For use in non-food/non-feed areas. Do not contaminate human or pet food preparation items or areas. Do not place near or inside ventilation duct openings.

**Selection of Treatment Areas:** Determine areas where mice will most likely find and consume bait. Generally, these are along walls, by gnawed openings, in corners and concealed places, between floors or walls, or in locations where house mice or their signs have been seen. Remove as much alternative food as possible.

**APPLICATION DIRECTIONS:**

Remove bait station from package and place in horizontal position with side against wall, exposing entrance. Space stations 8 to 12 feet apart along walls or in corners where mice or their signs have been seen. Move placements not touched after three days to new locations where mouse activity is evident. Maintain a constant supply of fresh bait for 15 days or until signs of house mouse activity cease. Replace bait stations if contents are consumed or contaminated. Wearing gloves, collect and dispose of all visible dead animals and leftover bait properly. To discourage reinfestation, limit sources of rodent food, water and harborage as much as possible. If reinfestation occurs, repeat treatment.

**ALTERNATE PRESENTATION OF APPLICATION DIRECTIONS:**

**APPLICATION DIRECTIONS:**

1. **Clean up:** Eliminate possible rodent food sources. Store food in sealed containers and sweep up food spills.
2. **Select Areas for Placement:** Focus on areas where rodents have been active - generally along walls, between floors or wall, inside cabinets, under appliances, in basements, attics or garages. Be sure to place out of reach of children and pets.
3. **Bait Station:** Remove bait station from package and place in horizontal positions with side against wall, exposing entrance. Space stations 8 to 12 feet apart along walls or in corners where mice or their signs have been seen.
4. **Dispose:** Maintain a constant supply of fresh bait for 15 days or until signs of mouse activity cease. When rodents are eliminated, wear gloves to collect and dispose of all visible dead animals and remaining bait.
5. **Prevent:** To prevent another infestation, limit sources of rodent food and water as much as possible.

Label on Bait Station:

**Chlorophacinone Bait Station**

**THIS BAIT STATION IS NOT TAMPER-RESISTANT. USE INDOORS ONLY IN AREAS INACCESSIBLE TO CHILDREN AND PETS.**

**KEEP OUT OF REACH OF CHILDREN**

**CAUTION:** See outer package label for precautionary statements, first aid information and directions for use.

Active Ingredient: chlorophacinone . . . . .	0.005%	(Liphatech Logo) Liphatech, Inc.
Inert Ingredients . . . . .	99.995%	3600 West Elm Street, Milwaukee, Wisconsin 53209
Total . . . . .	100.000%	414 351 1476

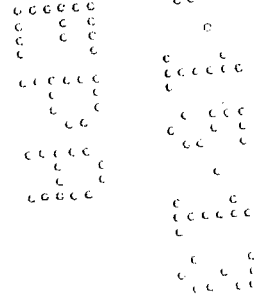
EPA Reg. No. 7173-287 EPA Est. No. 7173-WI-1  
Net Weight: 0.7 oz (20g)

**OPTIONAL MARKETING STATEMENTS:**

- (Covered) No Touch Design
- No Touch Bait Station
- No Touch
- Less Mess
- No Need to Touch the Bait When Placing Bait Station
- No Touch, Reduced (Less) Mess
- Concealed Bait
- Ready to use
- Easy to use
- Simple
- Simple, easy to use
- Covered design
- X Pre-Filled Stations [*where X = the number of stations in the package.*]
- Can use in (Designed for) (Perfect for) Kitchens (Bathrooms) (Basements) (living rooms) (Laundry rooms) in strict accordance with the Directions for Use
- Use inside cabinets, in closets, garages, attics and behind or under stoves and refrigerators in strict accordance with the Directions for Use
- Use in (Perfect for) Tight Spaces (in areas inaccessible to children and pets)
- Use in tight spaces where traps cannot reach (in areas inaccessible to children and pets)
- Kill with Ortho
- Ortho killing baits
- Kill House Mice 100% dead
- Kills House Mice
- Kills House mice – Dead!
- No set-up (No Assemble)
- Pre-filled bait station(s)
- No set-up (No Assemble) Pre-filled bait station(s)
- No loose pellets to spill or scatter
- No loose bait
- Proven formula
- Questions, Comments or Medical Information/[www.orthohomedefense.com](http://www.orthohomedefense.com)/1-800-225-2883

**OPTIONAL MARKETING STATEMENTS TO BE BY ORTHO-SCOTTS ONLY IN CONJUNCTION WITH THE ALTERNATE WARRANTY STATEMENT** "If for any reason you are not satisfied with this product, mail us proof of purchase to obtain full refund of your purchase."

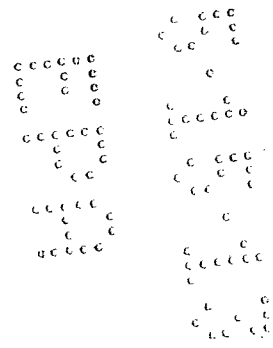
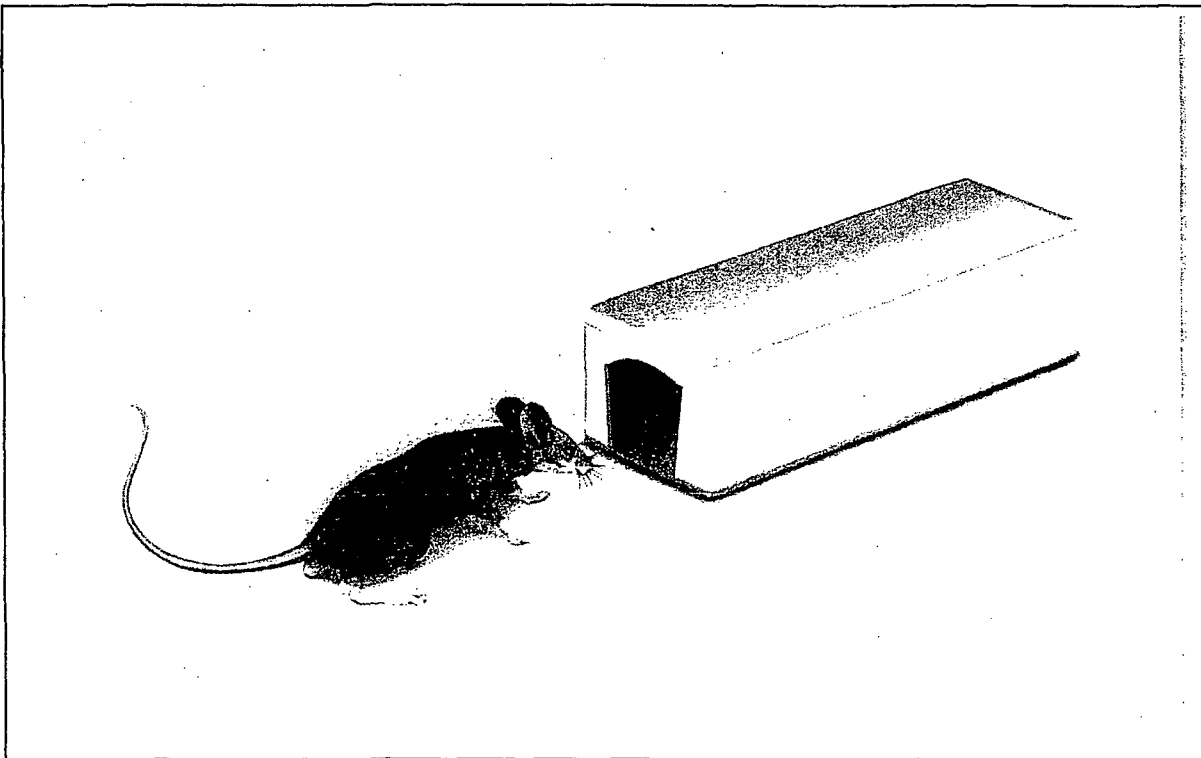
- (Ortho) Guaranteed
- (Ortho) Guaranteed kill!
- Guaranteed Ortho Kill!
- Guaranteed to Kill House Mice!
- Kills House Mice, Guaranteed!
- Satisfaction guaranteed or your money back



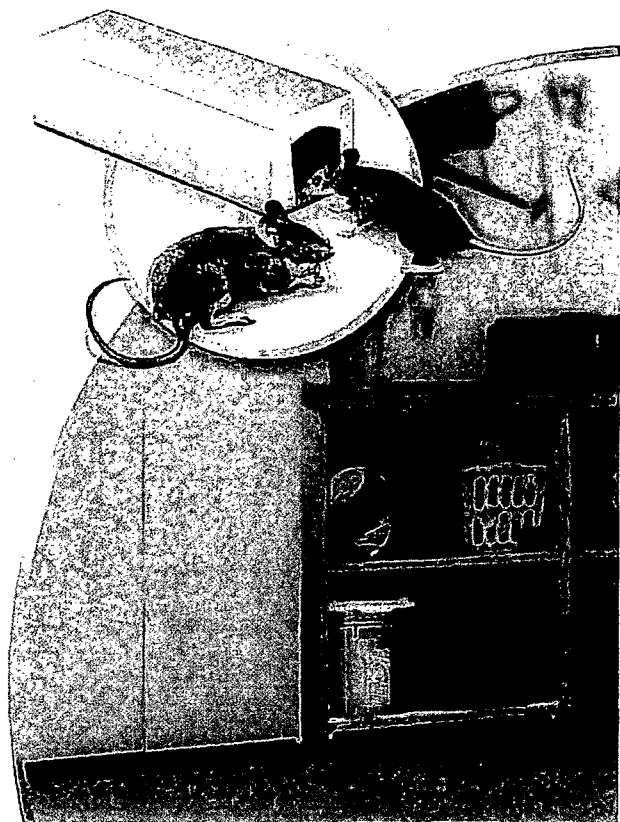
**OPTIONAL GRAPHICS-**

Graphic s (shown on the following pages) will be used on front and/or back retail packaging for The Ortho Group

6/12



7/12



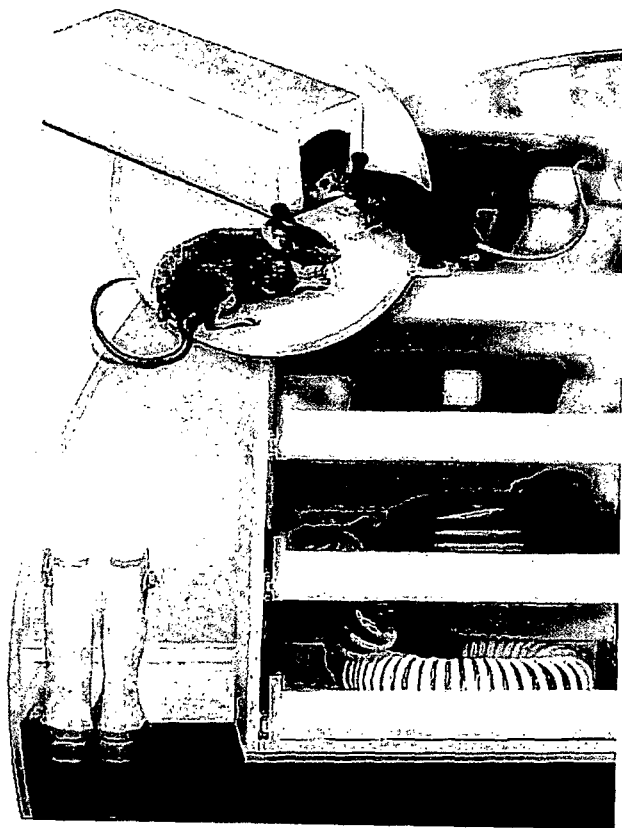
**This bait station is not tamper resistant.**  
**Use indoors only in areas inaccessible to children and pets.**  
(This text must appear on the same label panel as this graphic element)

1173-287  
~~0513~~ 051311a  
page 6 of 11

no touch | a  
bait station

8021 Phase 12 | 05.02.15  
017070 | www.cbx.com





**This bait station is not tamper resistant.**  
**Use indoors only in areas inaccessible to children and pets.**  
(This text must appear on the same label panel as this graphic element)

7173-287  
0513119  
page 7 of 11

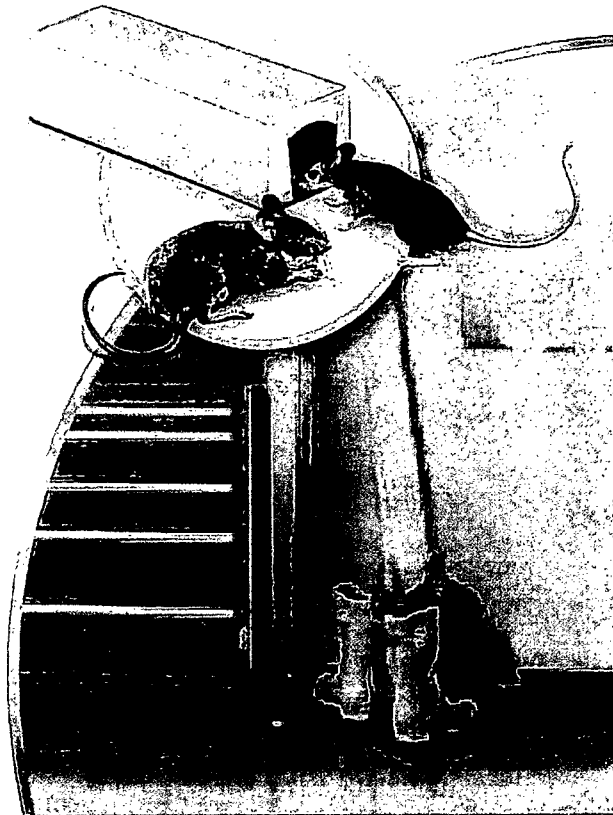
no touch | b  
bait station

570-202 Phase 12 | 05-02-12  
212-404-7970 | www.bx.com





9/12



**This bait station is not tamper resistant.**  
**Use indoors only in areas inaccessible to children and pets.**  
(This text must appear on the same label panel as this graphic element)

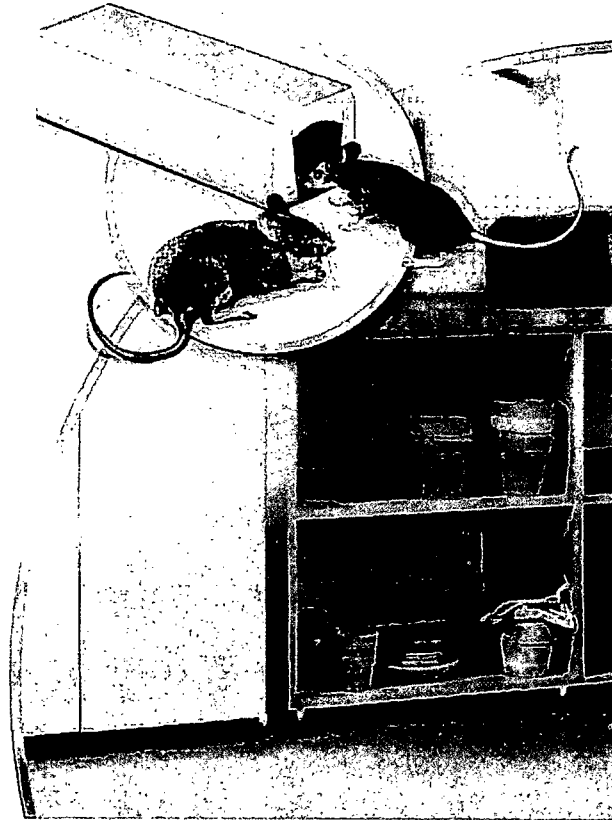
7173-287  
051311 9  
page 8 of 11

no touch | c  
bait station

SL0-267 Phase 12 | 05.02.13  
212 404 7970 | www.cbx.com



10/12



**This bait station is not tamper resistant.**  
**Use indoors only in areas inaccessible to children and pets.**  
(This text must appear on the same label panel as this graphic element)

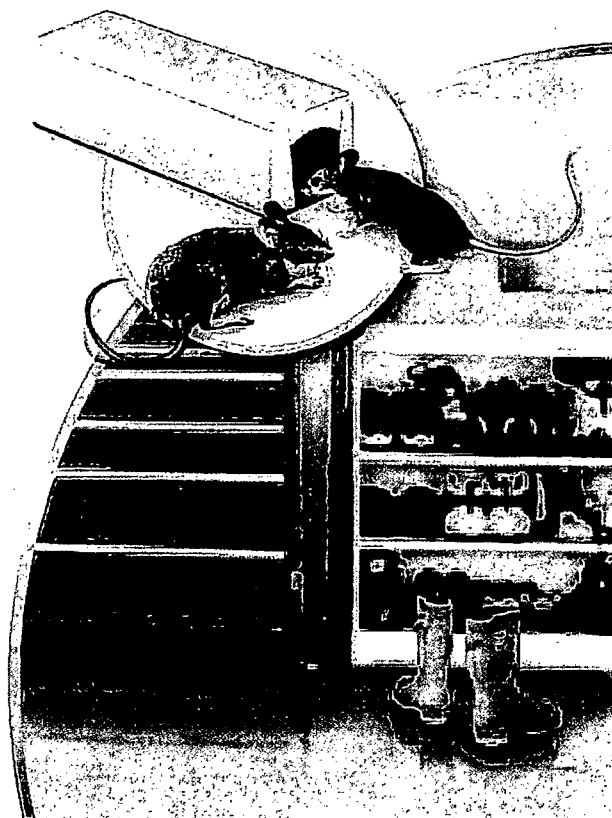
7173-287  
0513119  
p. 9 of 11

no touch | c1  
bait station

810-930-1144 | 05.02.13  
212-647-7970 | www.cbx.com



11/12



**This bait station is not tamper resistant.**  
**Use indoors only in areas inaccessible to children and pets.**  
(This text must appear on the same label panel as this graphic element)

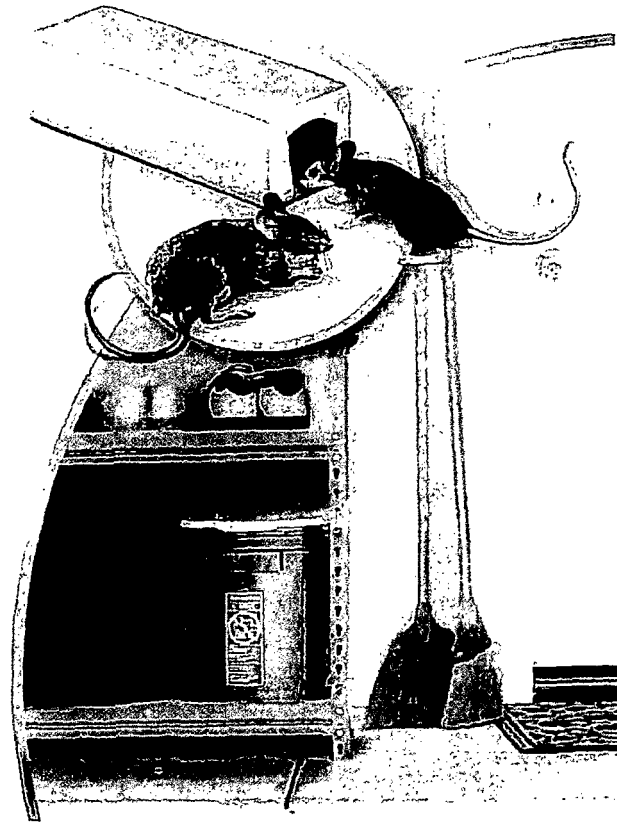
7173-287  
0513119  
p 10 of 11

no touch | d  
bait station

S10-202 Phase 12 | 05.02.13  
212 404 7070 | www.cbx.com



12/12



**This bait station is not tamper resistant.**  
**Use indoors only in areas inaccessible to children and pets.**  
(This text must appear on the same label panel as this graphic element)

7173-287  
0513119  
p 11 of 11

no touch | e  
bait station

SC20-282 Phase 1P | 05.02.13  
212-404-7970 | www.civx.com

