

7173-252

02/05/2007

117



U.S. ENVIRONMENTAL PROTECTION AGENCY

Office of Pesticide Programs  
Registration Division (7505C)  
1200 Pennsylvania Ave., N.W.  
Washington, D.C. 20460

EPA Reg. Number:

7173-252

Date of Issuance:

February 5,  
2007

NOTICE OF PESTICIDE:

Registration  
 Reregistration  
(under FIFRA, as amended)

Term of Issuance:

Conditional

Name of Pesticide Product:

Rozol Pellets Place Packs

Name and Address of Registrant (include ZIP Code):

LiphaTech Inc.  
3600 W. Elm Street  
Milwaukee, WI 53209

Attention: Mr. Thomas J. Schmit

800347 R30  
160

Note: Changes in labeling differing in substance from that accepted in connection with this registration must be submitted to and accepted by the Registration Division prior to use of the label in commerce. In any correspondence on this product always refer to the above EPA registration number.

On the basis of information furnished by the registrant, the above named pesticide is hereby registered/reregistered under the Federal Insecticide, Fungicide and Rodenticide Act.

Registration is in no way to be construed as an endorsement or recommendation of this product by the Agency. In order to protect health and the environment, the Administrator, on his motion, may at any time suspend or cancel the registration of a pesticide in accordance with the Act. The acceptance of any name in connection with the registration of a product under this Act is not to be construed as giving the registrant a right to exclusive use of the name or to its use if it has been covered by others.

This product is conditionally registered in accordance with FIFRA section 3(c)(7)(A) provided that you:

A) submit one (1) copy of final printed labeling to us, with the following labeling changes, before you release the product for shipment.

1. Modify your "Qualifier statements" to show the following combinations of package sizes and number of rats killed: 4.5 oz (1 to 2 rats); 6 oz (1 to 3 rats); 7.5 oz (2 to 4 rats); 9 oz (2 to 5 rats); 12 oz (3 to 6 rats); and 15 oz (4 to 8 rats).
2. Delete "Two packs may be placed at points of very high mouse activity." as this figure is 50% more than the maximum amount allowed for mice.

Daniel B. Peacock, Biologist  
Insecticide-Rodenticide Branch  
Registration Division (7505C)

Date:

February 5, 2007

3. Under "CAUTION", add the following as a 2<sup>nd</sup> Sentence: "May be harmful if swallowed or absorbed through the skin."
4. On the "Full label" place pack label, add the following after the misuse statement ("It is ... with its labeling."): "It is illegal to sell these placepacks individually."
5. Under "WARRANTY", add the following text at the beginning of this section: "To the extent consistent with applicable law, ..."
6. As required by the 1998 Rodenticide Cluster Reregistration Eligibility Decision (RED) document, the Agency may shortly require products such as this Chlorophacinone product, which contains field uses, to be a "Restricted Use Pesticide". EPA will send you a separate letter to you on this subject.

If these conditions are not complied with, the registration will be subject to cancellation in accordance with FIFRA section 6(e). Your release for shipment of the product constitutes acceptance of these conditions.

A stamped copy of the label is enclosed. If you have any questions, please contact Dan Peacock by phone (703-305-5407), fax (703-305-6596), or E-Mail ([peacock.dan@epa.gov](mailto:peacock.dan@epa.gov)).

Enclosures: 1. Stamped Label  
2. Minimum Type Size Requirements for Final Printed Labels

Dan Peacock, Flash Drive 1gb, E:\Chlorophacinone\7173-252, 2-3-2007, Notice of Reg.doc

3/7

**PRECAUTIONARY STATEMENTS**

Hazard to Humans and Domestic Animals

**CAUTION:** Keep away from children, domestic animals and pets. If swallowed, this product reduces the clotting ability of blood and causes bleeding. Avoid contact with eyes, skin or clothing. Wear gloves when handling bait or animals. Wash arms, hands and face with soap and water after applying and before eating and smoking.

**FIRST AID**

Have this label with you when obtaining treatment advice.

If swallowed: Call a poison control center or doctor immediately for treatment advice. Have person sip a glass of water if able to swallow. Do not induce vomiting unless told to do so by the poison control center or doctor. Do not give anything by mouth to an unconscious person.

If in eyes: Hold eye open and rinse slowly and gently with water for 15-20 minutes. Remove contact lenses, if present, after the first 5 minutes, then continue rinsing eye. Call a poison control center or doctor for treatment advice.

If on skin or clothing: Take off contaminated clothing. Rinse skin with plenty of cool water for 15-20 minutes. Call a poison control center or doctor for treatment advice.

Note to Physician or Veterinarian: Contains chlorophacinone, an anticoagulant. For humans or dogs that have ingested this product, or have obvious poisoning symptoms (bleeding) or prolonged prothrombin times, give Vitamin K<sub>1</sub> by intramuscular or oral administration. Check prothrombin time every 3 days until values return to normal.

**ENVIRONMENTAL HAZARDS:** This product is toxic to fish and wildlife. Predatory and scavenging mammals and birds might be poisoned if they feed upon animals that have eaten the bait. Do not apply directly to water, or to areas where surface water is present or to intertidal areas below the mean high water mark.

**STORAGE AND DISPOSAL**

Do not contaminate water, food or feed by storage or disposal. This is a nonrefillable container.

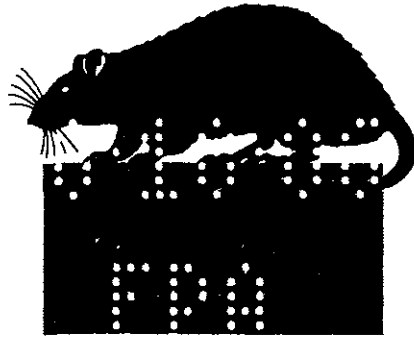
Storage: Store in original container in a cool, dry place inaccessible to children and pets.

Pesticide Disposal: Wastes resulting from the use of this product may be disposed of on site or at an approved waste disposal facility.

Container Disposal: Do not reuse or refill this container. Offer for recycling if available or dispose of empty container in a sanitary landfill, or by incineration, or if allowed by state and local authorities, by burning. If burned, stay out of smoke.

**WARRANTY:** Seller makes no warranty, expressed or implied, concerning the use of this product other than indicated on the label. Buyer assumes all risk of use and/or handling of this material when such use and/or handling is contrary to label instructions.

EPA Reg. No. 7173-XXX Product No. Label  
EPA Est. No. 7173-WI-1



# PELLETS PLACE PACKS

**FOR INDOOR AND OUTDOOR USE**

**KILLS HOUSE MICE,  
NORWAY RATS, AND ROOF RATS**

Active Ingredient: chlorophacinone ..... 0.005%  
Inert Ingredients ..... 99.995%  
Total ..... 100.000%

**KEEP OUT OF REACH OF CHILDREN  
CAUTION**  
See side panel for additional precautionary statements.

## LIPHA<sup>®</sup>TECH<sup>®</sup>

Liphatech, Inc.  
3600 W. Elm Street  
Milwaukee, WI 53209  
414-351-1476

**Net Weight:**

- 4.5 ounces (3 x 1.5 oz. bait packs), or
- 6 ounces (4 x 1.5 oz. bait packs), or
- 7.5 ounces (5 x 1.5 oz. bait packs), or
- 9 ounces (6 x 1.5 oz. bait packs), or
- 12 ounces (8 x 1.5 oz. bait packs), or
- 15 ounces (10 x 1.5 oz. bait packs), or
- 1 pound up to 50 pounds

**Optional marketing statements:**

Do not tear open the pack - rats and mice will chew through the wrapper to get at the bait.

**Alternate "Storage and Disposal" statement for packaging intended solely for household use:**

**STORAGE AND DISPOSAL**  
This is a nonrefillable container.  
Storage: Store in original container in a dry place inaccessible to children and pets.  
Disposal: If empty: Do not reuse or refill this container. Place in trash or offer for recycling if available. If partly filled: Call your local solid waste agency or 1-800-CLEANUP for disposal instructions. Never place unused product down any indoor or outdoor drain.

**ACCEPTED**

**Alternate warranty statements:** Satisfaction guaranteed or your money back.

Page 1 of 5  
Product label for EPA Reg. No. 7173-XXX  
Submitted 10/4/06

Under the Federal Insecticide, Fungicide, and Rodenticide Act as amended, this pesticide registered under EPA Reg. No. 7173-252

**DIRECTIONS FOR USE**

It is a violation of Federal law to use this product in a manner inconsistent with its labeling.

**READ THIS LABEL** and follow all use directions and precautions.

**IMPORTANT:** Do not expose children, pets or other nontarget animals to rodenticides. To help prevent accidents:

1. Store product not in use in a location out of reach of children and pets.
2. Apply bait in locations out of reach of children, pets, domestic animals, and nontarget wildlife, or in tamper-resistant bait stations. These stations must be resistant to destruction by dogs and children under six years of age, and must be used in a manner that prevents such children from reaching into bait compartments and obtaining bait. If bait can be shaken from stations when they are lifted, units must be secured or otherwise immobilized. Even stronger bait stations are needed in areas open to hooved livestock, raccoons, bears, other potentially destructive animals, or in areas prone to vandalism.
3. Dispose of product container, unused, spoiled, and unconsumed bait as specified on this label.

**USE RESTRICTIONS:** This product may be used to control Norway rats, roof rats and house mice. Do not place near or inside ventilation duct openings. Do not contaminate water, food, feedstuffs, food or feed handling equipment, or milk or meat handling equipment.

May be used in and around homes, industrial, commercial, agricultural and public buildings. It may also be used in transport vehicles (ships, trains, aircraft) and in and around related port or terminal buildings. This product is especially well suited for use in wet or damp areas, including river banks, gullies, irrigation ditches, railroad tracks, loading areas, under granaries, along fence lines and buffer strips, garbage dumps and landfills. Do not apply bait directly to ground surface or in grass or other ground cover. Where necessary, apply in tamper-resistant bait stations to prevent non-target animals from accessing the bait. Do not broadcast bait.

**Selection of Treatment Areas:** Determine areas where rats or mice are likely to find and consume bait, such as along walls, by gnawed openings, or in beside burrows, in corners and concealed places, between floors or walls, or locations where rodents or their signs are seen. Remove as much alternative food as possible.

**APPLICATION DIRECTIONS:**

- (Qualifier statement for 3 x 1.5 oz package only) This package contain enough bait (4.5 oz.) to kill 1 to 4 rats.
- (Qualifier statement for 4 x 1.5 oz package only) This package contain enough bait (6 oz.) to kill 1 to 5 rats.
- (Qualifier statement for 5 x 1.5 oz package only) This package contain enough bait (7.5 oz.) to kill 2 to 7 rats.
- (Qualifier statement for 6 x 1.5 oz package only) This package contain enough bait (9 oz.) to kill 3 to 9 rats.
- (Qualifier statement for 8 x 1.5 oz package only) This package contain enough bait (12 oz.) to kill 3 to 12 rats.
- (Qualifier statement for 10 x 1.5 oz package only) This package contain enough bait (15 oz.) to kill 4 to 13 rats.

**Mice:** Apply 1 pack per placement, usually spaced 8 to 12 feet apart. Two packs may be placed at points of very high mouse activity. Maintain a constant supply of fresh bait for 15 days or until signs of mouse activity cease.

**Rats:** Apply 3 to 10 packs per placement, usually spaced 15 to 30 feet apart. Maintain a constant supply of fresh bait for 10 days or until signs of rat activity cease.

**For rat burrows,** insert 1 to 2 packs deep into each active burrow. Check treated burrows each morning and evening to make sure that bait has not been pushed out of burrows.

**Follow-up:** Replace contaminated or spoiled bait immediately. Collect and dispose of all dead animals and leftover bait, as well as any bait that has become accessible to non-target animals. To discourage reinfestation, limit sources of rodent food, water and harborage as much as possible. If reinfestation does occur, repeat treatment. For a continuous infestation, set up permanent bait stations and replenish bait as needed. (27706)

FEB 5 2007

"Full label" place pack option. For retail or commercial sale in outer package containing 3 or more place packs, with size-specific qualifier statements on outer package label:

4/7

(27706)

# ROZOL

## PELLETS PLACE PACKS

### FOR INDOOR AND OUTDOOR USE

#### KILLS HOUSE MICE, NORWAY RATS, AND ROOF RATS

Active Ingredient: chlorophacinone ..... 0.0005%  
Inert Ingredients ..... 99.995%  
Total ..... 100.000%

EPA Reg No. 7173-XXX

EPA Est. No. 7173-WI-1

**KEEP OUT OF REACH OF CHILDREN**  
**PRECAUTIONARY STATEMENTS:** Hazard to Humans & Domestic Animals

**CAUTION:** Keep away from children, domestic animals and pets. If swallowed, this product reduces the clotting ability of blood and causes bleeding. Avoid contact with eyes, skin or clothing. Wear gloves when handling bait or animals. Wash arms, hands and face with soap and water after applying and before eating and smoking.

#### FIRST AID

Have this label with you when obtaining treatment advice. If swallowed: Call a poison control center or doctor immediately for treatment advice. Have person sip a glass of water if able to swallow. Do not induce vomiting unless told to do so by the poison control center or doctor. Do not give anything by mouth to an unconscious person.

If in eyes: Hold eye open and rinse slowly and gently with water for 15-20 minutes. Remove contact lenses, if present, after the first 5 minutes, then continue rinsing eye. Call a poison control center or doctor for treatment advice.

If on skin or clothing: Take off contaminated clothing. Rinse skin with plenty of cool water for 15-20 minutes. Call a poison control center or doctor for treatment advice.

**Note to Physician or Veterinarian:** Contains chlorophacinone, an anticoagulant. For humans or dogs that have ingested this product, or have obvious poisoning symptoms (bleeding) or prolonged prothrombin times, give Vitamin K1 by intramuscular or oral administration. Check prothrombin time every 3 days until values return to normal.

**ENVIRONMENTAL HAZARDS:** This product is toxic to fish and wildlife. Predatory and scavenging mammals and birds might be poisoned if they feed upon animals that have eaten the bait. Do not apply directly to water, or to areas where surface water is present or to intertidal areas below the mean high water mark.

**WARRANTY:** Seller makes no warranty, expressed or implied, concerning the use of this product other than indicated on the label. Buyer assumes all risk of use and/or handling of this material when such use and/or handling is contrary to label instructions.

**Net Weight: 1.5 oz. (43 grams)**

#### DIRECTIONS FOR USE

It is a violation of Federal law to use this product in a manner inconsistent with its labeling.

**READ THIS LABEL** and follow all use directions and precautions.

**IMPORTANT:** Do not expose children, pets or other nontarget animals to rodenticides. To help prevent accidents:

1. Store product not in use in a location out of reach of children and pets.
2. Apply bait in locations out of reach of children, pets, domestic animals, and nontarget wildlife, or in tamper-resistant bait stations. These stations must be resistant to destruction by dogs and children under six years of age, and must be used in a manner that prevents such children from reaching into bait compartments and obtaining bait. If bait can be shaken from stations when they are lifted, units must be secured or otherwise immobilized. Even stronger bait stations are needed in areas open to hoofed livestock, raccoons, bears, other potentially destructive animals, or in areas prone to vandalism.
3. Dispose of product container, unused, spoiled, and unconsumed bait as specified on this label.

**USE RESTRICTIONS:** This product may be used to control Norway rats, roof rats and house mice. Do not place near or inside ventilation duct openings. Do not contaminate water, food, feedstuffs, food or feed handling equipment, or milk or meat handling equipment. May be used in and around homes, industrial, commercial, agricultural and public buildings. It may also be used in transport vehicles (ships, trains, aircraft) and in and around related port or terminal buildings. This product is especially well suited for use in wet or damp areas, including river banks, gullies, irrigation ditches, railroad tracks, loading areas, under granaries, along fence lines and buffer strips, garbage dumps and landfills. Do not apply bait directly to ground surface or in grass or other ground cover. Where necessary, apply in tamper-resistant bait stations to prevent non-target animals from accessing the bait. Do not broadcast bait.

**Selection of Treatment Areas:** Determine areas where rats or mice are likely to find and consume bait, such as along walls, by gnawed openings, in or beside burrows, in corners and concealed places, between floors or walls, or locations where rodents or their signs are seen. Remove as much alternative food as possible.

#### APPLICATION DIRECTIONS:

**Mice:** Apply 1 pack per placement, usually spaced 8 to 12 feet apart. Two packs may be placed at point of high mouse activity. Maintain a constant supply of fresh bait for 15 days or until signs of mouse activity cease.

**Rats:** Apply 3 to 10 packs per placement, usually spaced 15 to 30 feet apart. Maintain a constant supply of fresh bait for 10 days or until signs of rat activity cease. **For rat burrows,** insert 1 to 2 packs deep into each active burrow. Check treated burrows each morning and evening to make sure that bait has not been pushed out of burrows.

**Follow-up:** Replace contaminated or spoiled bait immediately. Collect and dispose of all dead animals and leftover bait, as well as any bait that has become accessible to non-target animals. To discourage reinfestation, limit sources of rodent food, water and harborage as much as possible. If reinfestation does occur, repeat treatment. For a continuous infestation, set up permanent bait stations and replenish bait as needed.

Film No. 115-

#### STORAGE AND DISPOSAL

Do not contaminate water, food or feed by storage or disposal. This is a nonrefillable container.

**Storage:** Store in original container in a cool, dry place inaccessible to children and pets.

**Pesticide Disposal:** Wastes resulting from the use of this product may be disposed of on site or at an approved waste disposal facility.

**Container Disposal:** Do not reuse or refill this container. Offer for recycling if available or dispose of empty container in a sanitary landfill, or by incineration, or if allowed by state and local authorities, by burning. If burned, stay out of smoke.

Manufactured by: Liphatech, Inc., 3600 W. Elm Street, Milwaukee, WI 53209, 414-351-1476

Alternate "Storage and Disposal" statement for packaging intended solely for household use:

#### STORAGE AND DISPOSAL

This is a nonrefillable container. **Storage:** Store in original container in a dry place inaccessible to children and pets. **Disposal:** If empty, Do not reuse or refill this container. Place in trash or offer for recycling if available. If partly filled: Call your local solid waste agency or 1-800-CLEANUP for disposal instructions. Never place unused product down any indoor or outdoor drain.

Alternate warranty statements: Satisfaction guaranteed or your money back.

Optional marketing statements: Do not tear open the pack - rats and mice will chew through the wrapper to get at the bait.

Page 2 of 5  
Product label for EPA Reg. No. 7173-XXX  
Submitted 10/4/06

"Abbreviated" place pack label option: For retail or commercial sale in outer package containing 3 or more place packs, with size-specific qualifier statements on outer package label:

5/7

DIRECTIONS FOR USE

It is a violation of Federal law to use this product in a manner inconsistent with its labeling. Read the entire label on the outer package before using this product. It is illegal to sell these placepacks individually.

**WARRANTY:** Seller makes no warranty, expressed or implied, concerning use of this product other than indicated on the label. Buyer assumes all risk of use and/or handling of product when such use and/or handling is contrary to label instructions. Film No. 115- (27706)

STORAGE AND DISPOSAL

Do not contaminate water, food or feed by storage or disposal. This is a nonrefillable container.  
Storage: Store in original container in a cool, dry place inaccessible to children and pets.  
Pesticide Disposal: Wastes resulting from the use of this product may be disposed of on site or at an approved waste disposal facility.  
Container Disposal: Do not reuse or refill this container. Offer for recycling if available or dispose of empty container in a sanitary landfill, or by incineration, or if allowed by state and local authorities, by burning. If burned, stay out of smoke.

# ROZOL

## PELLETS PLACE PACKS

FOR INDOOR AND OUTDOOR USE

### KILLS HOUSE MICE, NORWAY RATS, AND ROOF RATS

Active ingredient: chlorophacinone ..... 0.005%  
Inert ingredients ..... 99.995%  
Total ..... 100.000%

EPA Reg No. 7173-XXX

EPA Est. No. 7173-WI-1

**KEEP OUT OF REACH OF CHILDREN**  
**CAUTION:**  
See side panel for additional precautionary statements.

# LIPHA<sup>TM</sup>TECH<sup>®</sup>

LiphaTech, Inc.  
3600 W. Elm Street  
Milwaukee, WI 53209  
414-351-1476

Net Weight: 1.5 oz. (43 grams)

PRECAUTIONARY STATEMENTS: Hazard to Humans & Domestic Animals

**CAUTION:** Keep away from children, domestic animals and pets. If swallowed, this product reduces the clotting ability of blood and causes bleeding. Avoid contact with eyes, skin or clothing. Wear gloves when handling bait or animals. Wash arms, hands and face with soap and water after applying and before eating and smoking.

FIRST AID

Have this label with you when obtaining treatment advice.  
If swallowed: Call a poison control center or doctor immediately for treatment advice. Have person sip a glass of water if able to swallow. Do not induce vomiting unless told to do so by the poison control center or doctor. Do not give anything by mouth to an unconscious person.

If in eyes: Hold eye open and rinse slowly and gently with water for 15-20 minutes. Remove contact lenses, if present, after the first 5 minutes, then continue rinsing eye. Call a poison control center or doctor for treatment advice.

If on skin or clothing: Take off contaminated clothing. Rinse skin with plenty of cool water for 15-20 minutes. Call a poison control center or doctor for treatment advice.

Note to Physician or Veterinarian: Contains chlorophacinone, an anticoagulant. For humans or dogs that have ingested this product, or have obvious poisoning symptoms (bleeding) or prolonged prothrombin times, give Vitamin K1 by intramuscular or oral administration. Check prothrombin time every 3 days until values return to normal.

**ENVIRONMENTAL HAZARDS:** This product is toxic to fish and wildlife. Predatory and scavenging mammals and birds might be poisoned if they feed upon animals that have eaten the bait. Do not apply directly to water, or to areas where surface water is present or to intertidal areas below the mean high water mark.

Alternate "Storage and Disposal" statement for packaging intended solely for household use:

**STORAGE AND DISPOSAL**

This is a nonrefillable container.  
Storage: Store in original container in a dry place inaccessible to children and pets.  
Disposal: If empty: Do not reuse or refill this container. Place in trash or offer for recycling if available. If partly filled: Call your local solid waste agency or 1-800-CLEANUP for disposal instructions. Never place unused product down any indoor or outdoor drain.

Alternate warranty statements:

Satisfaction guaranteed or your money back.

Optional marketing statements:

Do not tear open the pack - rats and mice will chew through the wrapper to get at the bait.

Page 3 of 5  
Product label for EPA Reg. No. 7173-XXX  
Submitted 10/4/05

6/7

"Mouse only" place pack label option: For retail or commercial sale as individual place packs, or in outer package containing 1 or more place packs:

**APPLICATION DIRECTIONS:**

**Mice:** Apply 1 pack per placement, usually spaced 8 to 12 feet apart. Two packs may be placed in points of very high mouse activity. Maintain a constant supply of fresh bait for 15 days or until signs of mouse activity cease. Replace contaminated or spoiled bait immediately. Collect and dispose of all dead animals and leftover bait, as well as any bait that has become accessible to non-target animals. To discourage reinfestation, limit sources of rodent food, water and harborage as much as possible. If reinfestation does occur, repeat treatment. For a continuous infestation, set up permanent bait stations and replenish bait as needed. (27706) Film No. 115.

**STORAGE AND DISPOSAL**

Do not contaminate water, food or feed by storage or disposal. This is a nonrefillable container. Storage: Store in original container in a cool, dry place inaccessible to children and pets. Pesticide Disposal: Wastes resulting from the use of this product may be disposed of on site or at an approved waste disposal facility. Container Disposal: Do not reuse or refill this container. Offer for recycling if available or dispose of empty container in a sanitary landfill, or by incineration, or if allowed by state and local authorities, by burning. If burned, stay out of smoke.

Manufactured by: Liphatech, Inc., 3600 W. Elm Street, Milwaukee, WI 53209, 414-351-1476

# ROZOL

## PELLETS PLACE PACKS

### FOR INDOOR AND OUTDOOR USE

### KILLS HOUSE MICE

Active Ingredient: chlorophacinone ..... 0.005%  
Inert Ingredients ..... 99.995%  
Total ..... 100.000%

EPA Reg No. 7173-XXX

EPA Est. No. 7173-WI-1

KEEP OUT OF REACH OF CHILDREN  
PRECAUTIONARY STATEMENTS: Hazard to Humans & Domestic Animals

**CAUTION:** Keep away from children, domestic animals and pets. If swallowed, this product reduces the clotting ability of blood and causes bleeding. Avoid contact with eyes, skin or clothing. Wear gloves when handling bait or animals. Wash arms, hands and face with soap and water after applying and before eating and smoking.

**FIRST AID**

Have this label with you when obtaining treatment advice. If swallowed: Call a poison control center or doctor immediately for treatment advice. Have person sip a glass of water if able to swallow. Do not induce vomiting unless told to do so by the poison control center or doctor. Do not give anything by mouth to an unconscious person.

If in eyes: Hold eye open and rinse slowly and gently with water for 15-20 minutes. Remove contact lenses, if present, after the first 5 minutes, then continue rinsing eye. Call a poison control center or doctor for treatment advice.

If on skin or clothing: Take off contaminated clothing. Rinse skin with plenty of cool water for 15-20 minutes. Call a poison control center or doctor for treatment advice.

Note to Physician or Veterinarian: Contains chlorophacinone, an anticoagulant. For humans or dogs that have ingested this product, or have obvious poisoning symptoms (bleeding) or prolonged prothrombin times, give Vitamin K1 by intramuscular or oral administration. Check prothrombin time every 3 days until values return to normal.

**ENVIRONMENTAL HAZARDS:** This product is toxic to fish and wildlife. Predatory and scavenging mammals and birds might be poisoned if they feed upon animals that have eaten the bait. Do not apply directly to water, or to areas where surface water is present or to intertidal areas below the mean high water mark.

**WARRANTY:** Seller makes no warranty, expressed or implied, concerning the use of this product other than indicated on the label. Buyer assumes all risk of use and/or handling of this material when such use and/or handling is contrary to label instructions.

Net Weight: 1.5 oz. (43 grams)

**DIRECTIONS FOR USE**

It is a violation of Federal law to use this product in a manner inconsistent with its labeling.

**READ THIS LABEL** and follow all use directions and precautions.

**IMPORTANT:** Do not expose children, pets or other nontarget animals to rodenticides. To help prevent accidents:

1. Store product not in use in a location out of reach of children and pets.
2. Apply bait in locations out of reach of children, pets, domestic animals, and nontarget wildlife, or in tamper-resistant bait stations. These stations must be resistant to destruction by dogs and children under six years of age, and must be used in a manner that prevents such children from reaching into bait compartments and obtaining bait. If bait can be shaken from stations when they are lifted, units must be secured or otherwise immobilized. Even stronger bait stations are needed in areas open to feral livestock, raccoons, bears, other potentially destructive animals, or in areas prone to vandalism.
3. Dispose of product container, unused, spoiled, and unconsumed bait as specified on this label.

**USE RESTRICTIONS:** This product may be used to control house mice. Do not place near or inside ventilation duct openings. Do not contaminate water, food, feedstuffs, food or feed handling equipment, or milk or meat handling equipment. May be used in and around homes, industrial, commercial, agricultural and public buildings. It may also be used in transport vehicles (ships, trains, aircraft) and in and around related port or terminal buildings. This product is especially well suited for use in wet or damp areas, including river banks, gullies, irrigation ditches, railroad tracks, loading areas, under granaries, along fence lines and buffer strips, garbage dumps and landfills. Do not apply bait directly to ground surface or in grass or other ground cover. Where necessary, apply in tamper-resistant bait stations to prevent non-target animals from accessing the bait. Do not broadcast bait. **Selection of Treatment Areas:** Determine areas where mice are likely to find and consume bait, such as along walls, by gnawed openings, in or beside burrows, in corners and concealed places; between floors or walls, or locations where rodents or their signs are seen. Remove as much alternative food as possible.

Alternate "Storage and Disposal" statement for packaging intended solely for household use:

**STORAGE AND DISPOSAL**

This is a nonrefillable container. Storage: Store in original container in a dry place inaccessible to children and pets. Disposal: If empty: Do not reuse or refill this container. Place in trash or offer for recycling if available. If partly filled: Call your local solid waste agency or 1-800-CLEANUP for disposal instructions. Never place unused product down any indoor or outdoor drain.

Alternate warranty statements:

Satisfaction guaranteed or your money back.

Optional marketing statements:

Do not tear open the pack - mice will chew through the wrapper to get at the bait.

Page 4 of 5  
Product label for EPA Reg. No. 7173-XXX  
Submitted 10/4/06

"Mouse only" outer carton label:

**PRECAUTIONARY STATEMENTS**  
 Hazard to Humans and Domestic Animals

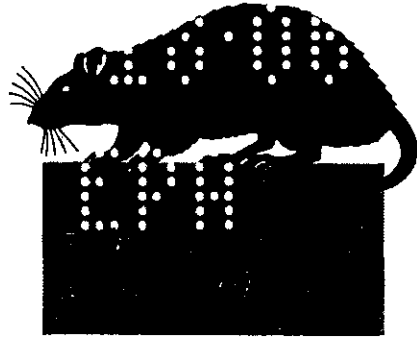
**CAUTION:** Keep away from children, domestic animals and pets. If swallowed, this product reduces the clotting ability of blood and causes bleeding. Avoid contact with eyes, skin or clothing. Wear gloves when handling bait or animals. Wash arms, hands and face with soap and water after applying and before eating and smoking.

**FIRST AID**  
 Have this label with you when obtaining treatment advice.  
 If swallowed: Call a poison control center or doctor immediately for treatment advice. Have person sip a glass of water if able to swallow. Do not induce vomiting unless told to do so by the poison control center or doctor. Do not give anything by mouth to an unconscious person.  
 If in eyes: Hold eye open and rinse slowly and gently with water for 15-20 minutes. Remove contact lenses, if present, after the first 5 minutes, then continue rinsing eye. Call a poison control center or doctor for treatment advice.  
 If on skin or clothing: Take off contaminated clothing. Rinse skin with plenty of cool water for 15-20 minutes. Call a poison control center or doctor for treatment advice.  
 Note to Physician or Veterinarian: Contains chlorophacinone, an anticoagulant. For humans or dogs that have ingested this product, or have obvious poisoning symptoms (bleeding) or prolonged prothrombin times, give Vitamin K<sub>1</sub> by intramuscular or oral administration. Check prothrombin time every 3 days until values return to normal.

**ENVIRONMENTAL HAZARDS:** This product is toxic to fish and wildlife. Predatory and scavenging mammals and birds might be poisoned if they feed upon animals that have eaten the bait. Do not apply directly to water, or to areas where surface water is present or to intertidal areas below the mean high water mark.

**STORAGE AND DISPOSAL**  
 Do not contaminate water, food or feed by storage or disposal. This is a nonrefillable container.  
 Storage: Store in original container in a cool, dry place inaccessible to children and pets.  
 Pesticide Disposal: Wastes resulting from the use of this product may be disposed of on site or at an approved waste disposal facility.  
 Container Disposal: Do not reuse or refill this container. Offer for recycling if available or dispose of empty container in a sanitary landfill, or by incineration, or if allowed by state and local authorities, by burning. If burned, stay out of smoke.

**WARRANTY:** Seller makes no warranty, expressed or implied, concerning the use of this product other than indicated on the label. Buyer assumes all risk of use and/or handling of this material when such use and/or handling is contrary to label instructions.



# PELLETS PLACE PACKS

**FOR INDOOR AND OUTDOOR USE**  
**KILLS HOUSE MICE,  
 NORWAY RATS, AND ROOF RATS**

|  |          |
|--|----------|
| Active Ingredient: chlorophacinone ..... | 0.005%   |
| Inert Ingredients .....                  | 99.995%  |
| Total .....                              | 100.000% |

**KEEP OUT OF REACH OF CHILDREN  
 CAUTION**  
 See side panel for additional precautionary statements.

**LIPHA/TECH**  
 Liphatech, Inc.  
 3600 W. Elm Street  
 Milwaukee, WI 53209  
 414-351-1476

**Net Weight:**  
 4.5 ounces (3 x 1.5 oz. bait packs), or  
 6 ounces (4 x 1.5 oz. bait packs), or  
 7.5 ounces (5 x 1.5 oz. bait packs), or  
 9 ounces (6 x 1.5 oz. bait packs), or  
 12 ounces (8 x 1.5 oz. bait packs), or  
 15 ounces (10 x 1.5 oz. bait packs), or  
 1 pound up to 50 pounds

*Alternate "Storage and Disposal" statement for packaging intended solely for household use:*

**STORAGE AND DISPOSAL**  
 This is a nonrefillable container.  
 Storage: Store in original container in a dry place inaccessible to children and pets.  
 Disposal: If empty: Do not reuse or refill this container. Place in trash or offer for recycling if available. If partly filled: Call your local solid waste agency or 1-800-CLEANUP for disposal instructions. Never place unused product down any indoor or outdoor drain.

*Optional marketing statements:*

Do not tear open the pack - mice will chew through the wrapper to get at the bait.

*Alternate warranty statements:*  
 Satisfaction guaranteed or your money back.

**DIRECTIONS FOR USE**

It is a violation of Federal law to use this product in a manner inconsistent with its labeling.

**READ THIS LABEL** and follow all use directions and precautions.

**IMPORTANT:** Do not expose children, pets or other nontarget animals to rodenticides. To help prevent accidents:

1. Store product not in use in a location out of reach of children and pets.
2. Apply bait in locations out of reach of children, pets, domestic animals, and nontarget wildlife, or in tamper-resistant bait stations. These stations must be resistant to destruction by dogs and children under six years of age, and must be used in a manner that prevents such children from reaching into bait compartments and obtaining bait. If bait can be shaken from stations when they are lifted, units must be secured or otherwise immobilized. Even stronger bait stations are needed in areas open to hoofed livestock, raccoons, bears, other potentially destructive animals, or in areas prone to vandalism.
3. Dispose of product container, unused, spoiled, and unconsumed bait as specified on this label.

**USE RESTRICTIONS:** This product may be used to control house mice. Do not place near or inside ventilation duct openings. Do not contaminate water, food, feedstuffs, food or feed handling equipment, or milk or meat handling equipment.

May be used in and around homes, industrial, commercial, agricultural and public buildings. It may also be used in transport vehicles (ships, trains, aircraft) and in and around related port or terminal buildings. This product is especially well suited for use in wet or damp areas, including river banks, gullies, irrigation ditches, railroad tracks, loading areas, under granaries, along fence lines and buffer strips, garbage dumps and landfills.

Do not apply bait directly to ground surface or in grass or other ground cover. Where necessary, apply in tamper-resistant bait stations to prevent non-target animals from accessing the bait. Do not broadcast bait.

**Selection of Treatment Areas:** Determine areas where mice are likely to find and consume bait, such as along walls, by gnawed openings, in or beside burrows, in corners and concealed places, between floors or walls, or locations where rodents or their signs are seen. Remove as much alternative food as possible.

**APPLICATION DIRECTIONS:**

**Mice:** Apply 1 pack per placement, usually spaced 8 to 12 feet apart. Two packs may be placed at points of very high mouse activity. Maintain a constant supply of fresh bait for 15 days or until signs of mouse activity cease.

Replace contaminated or spoiled bait immediately. Collect and dispose of all dead animals and leftover bait, as well as any bait that has become accessible to non-target animals. To discourage reinfestation, limit sources of rodent food, water and harborage as much as possible. If reinfestation does occur, repeat treatment. For a continuous infestation, set up permanent bait stations and replenish bait as needed. (27706)