

7173-151

01/11/2006

1/3

UNITED STATES ENVIRONMENTAL PROTECTION AGENCY
WASHINGTON, D.C. 20460



OFFICE OF
PREVENTION, PESTICIDES
AND TOXIC SUBSTANCES

January 11, 2006

LiphaTech, Inc.
3600 W. Elm Street
Milwaukee, WI 53209

R 34 5-781871
18

Attention: Mr. Thomas J. Schmit

Subject **Rozol Pellets**
EPA Reg. No. 7173-151
Your amended application of July 14, 2005

Purpose This amends the label of this product under sec 3 of the Federal Insecticide, Fungicide, and Rodenticide Act (FIFRA), including the First Aid, Note to Physician, Use Restrictions, and Storage and Disposal texts.

Labeling The labeling submitted with the above letter is acceptable, provided that you submit one (1) copy of final printed labeling to us, with the following change, before you ship the product.

1. Revise the "USE RESTRICTIONS" to read:

USE RESTRICTIONS: This product may be ... public buildings. It may also ... port or terminal buildings (including loading areas associated with such buildings) and under granaries. Within these sites, this product is especially well suited for use in wet or damp areas. Do not place bait ... contact with food. Do not broadcast bait. Do not use in sewers.

Adding "field use" sites to your label, such as "river banks, gullies, irrigation ditches, railroad tracks, along fencelines and buffer strips, garbage dumps and landfills", would make this product a "Restricted Use Pesticide". See p112 of the Rodenticide Cluster RED.

Existing stocks Stocks of product with existing labels may be used for eighteen (18) months.

Consequence for non-compliance If this condition is not complied with, the registration will be subject to cancellation in accordance with FIFRA section 6(e). Your release for shipment of the product constitutes acceptance of these conditions.

Questions If you have questions about this letter, please contact me at 703-305-5407 (phone); 703-305-6596 (fax); or peacock.dan@epa.gov (E-Mail).

Sincerely,



Daniel B. Peacock, Biologist
Insecticide-Rodenticide Branch
Registration Division (7504C)

Attachment Stamped Label

File Location Dan Peacock, Flash Drive 1, 512 mb, E:\1-7-2005 Backup\Dan's Office Work\A Flash Drive 1\Chlorophacinone\7173-151, revised label, 1-6-2006.doc

PRECAUTIONARY STATEMENTS
 Hazard to Humans and Domestic Animals

CAUTION: Keep away from children, domestic animals and pets. May be harmful if swallowed or absorbed through the skin because it may reduce the clotting ability of blood and cause bleeding. Do not get in eyes, on skin or on clothing. Wear gloves when handling bait or retrieving dead animals. Wash arms, hands and face with soap and water after applying and before eating and smoking.

FIRST AID
 Have this label with you when obtaining treatment advice.
 If swallowed: Call a poison control center or doctor immediately for treatment advice.
 If in eyes: Hold eye open and rinse slowly and gently with water for 15-20 minutes. Remove contact lenses, if present, after the first 5 minutes, then continue rinsing eye. Call a poison control center or doctor for treatment advice.
 If on skin or clothing: Take off contaminated clothing. Rinse skin with plenty of cool water for 15-20 minutes. Call a poison control center or doctor for treatment advice.
Note to Physician or Veterinarian: Contains chlorophacinone, an anticoagulant. For humans or dogs that have ingested this product, or have obvious poisoning symptoms (bleeding) or prolonged prothrombin times, give Vitamin K₁ by intramuscular or oral administration. Check prothrombin time every 3 days until values return to normal.

ENVIRONMENTAL HAZARDS: This product is toxic to fish and wildlife. Do not apply directly to water, or to areas where surface water is present or to intertidal areas below the mean high water mark.

STORAGE AND DISPOSAL
 Do not contaminate water, food or feed by storage or disposal.
Storage: Store in original container in a cool, dry place inaccessible to children and pets.
Pesticide Disposal: Wastes resulting from the use of this product may be disposed of on site or at an approved waste disposal facility.
Container Disposal: Dispose of empty container in a sanitary landfill, or by incineration, or if allowed by state and local authorities, by burning. If burned, stay out of smoke.

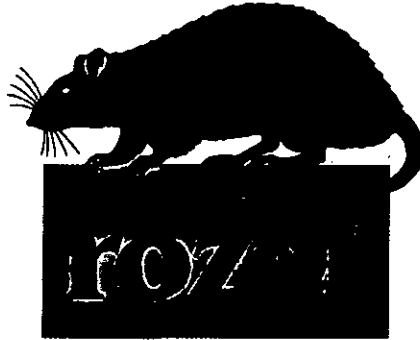
WARRANTY: Seller makes no warranty, expressed or implied, concerning the use of this product other than indicated on the label. Buyer assumes all risk of use and/or handling of this material when such use and/or handling is contrary to label instructions.

EPA Reg. No. 7173-151 Product No.
 EPA Est. No. 7173-WI-1 Label No.

Alternate "Storage and Disposal" statement for packaging intended solely for household use:

STORAGE AND DISPOSAL
Storage: Store in original container in a dry place inaccessible to children and pets.
Disposal: If empty: Do not reuse this container. Place in trash or offer for recycling if available. If partly filled: Call your local solid waste agency or 1-800-CLEANUP for disposal instructions. Never place unused product down any indoor or outdoor drain.

Alternate warranty statements:
 Satisfaction guaranteed or your money back.



PELLETS

FOR INDOOR AND OUTDOOR USE
KILLS HOUSE MICE,
NORWAY RATS, AND ROOF RATS

Active Ingredient: chlorophacinone	0.005%
Inert Ingredients	99.995%
Total	100.000%

KEEP OUT OF REACH OF CHILDREN
CAUTION: See side panel for additional precautionary statements.

LIPHATECH
 Liphatech, Inc.
 3600 W. Elm Street
 Milwaukee, WI 53209
 (414) 351-1476

Net Weight:
12 ounces
or bulk package containing
1 pound up to 50 pounds
 with **COMMENTS**
 in EPA Letter Dated:

JAN 11 2006

Under the Federal Insecticide,
 Fungicide, and Rodenticide Act
 as amended, for the pesticide
 registered under EPA Reg. No.

7173-151

DIRECTIONS FOR USE

It is a violation of Federal law to use this product in a manner inconsistent with its labeling.

READ THIS LABEL and follow all use directions and precautions.
IMPORTANT: Do not expose children, pets or other nontarget animals to rodenticides. To help prevent accidents:
 1. Store product not in use in a location out of reach of children and pets.
 2. Apply bait in locations out of reach of children, pets, domestic animals, and nontarget wildlife, or in tamper-resistant bait stations. These stations must be resistant to destruction by dogs and children under six years of age, and must be used in a manner that prevents such children from reaching into bait compartments and obtaining bait. If bait can be shaken from stations when they are filled, units must be secured or otherwise immobilized. Even stronger bait stations are needed in areas open to hooved livestock, raccoons, bears, other potentially destructive animals, or in areas prone to vandalism.
 3. Dispose of product container, unused, spoiled, and unconsumed bait as specified on this label.

USE RESTRICTIONS: This product may be used to control Norway rats, roof rats and house mice in and around homes, industrial, commercial, agricultural and public buildings. It may also be used in transport vehicles (ships, trains, aircraft) and in and around related port or terminal buildings. This product is especially well suited for use in wet or damp areas, including river banks, gutters, irrigation ditches, railroad tracks, loading areas, under granaries, along fence lines and buffer strips, garbage dumps and landfills.
 Do not place bait where it may contaminate food or surfaces that come in direct contact with food. Do not apply bait directly to ground surface or in grass or other ground cover. Where necessary, apply in tamper-resistant bait stations to prevent non-target animals from accessing the bait. Do not broadcast bait.
Selection of Treatment Areas: Determine areas where rats or mice are likely to find and consume bait, such as along walls, by gnawed openings, in or beside burrows, in corners and concealed places, between floors or walls, or locations where rodents or their signs are seen. Remove as much alternative food as possible.

APPLICATION DIRECTIONS:
 (Qualifier statement only for 12 ounce package.)
 This package contains enough bait (12 oz.) to kill 3 to 12 rats.

Mice: Apply 1/4 to 1/2 ounce of bait (1-2 level tablespoons) per placement. Larger amounts (up to 2 ounces) may be needed at points of extremely high mouse activity. Space placements 8 to 12 feet apart. Maintain an uninterrupted supply of fresh bait for 15 days or until signs of mouse activity cease.
Rats: Apply 4 to 16 ounces of bait per placement, usually spaced 15 to 30 feet apart. Maintain a constant supply of fresh bait for 10 days or until fresh signs of rat activity cease.
For rat burrows, insert 1/2 to 1 ounce of bait deep into each active burrow. Check treated burrows each morning and evening to make sure that bait has not been pushed out of burrows.
Follow-up: Replace contaminated or spoiled bait immediately. Collect and dispose of all visible dead animals and leftover bait properly. To discourage reinfestation, limit sources of rodent food, water and harborage as much as possible. If reinfestation does occur, repeat treatment. For a continuous infestation, set up permanent bait stations and replenish bait as needed. (2005)

