

CENTER PANEL

SLIME CURE
CONCENTRATED
SWIMMING POOL ALGAECIDE

Keeps pool water clear and free of visible algae.

Active Ingredients:

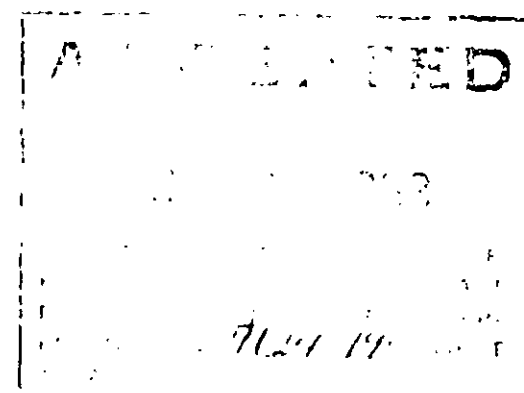
N-Alkyl (60% C14, 30% C16, 5% C12, 5% C18) Dimethyl
benzyl ammonium chlorides. ~~42.0%~~
Ni-di-alkyl (60% C14, 30% C16, 5% C12, 5% C18,
Methyl benzyl ammonium chlorides 8.0%

Total:	50%	50%
Inert Ingredient:		<u>50%</u>
		100%

Slime Cure is a concentrate and should be diluted before
using.

Caution: Keep out of reach of Children. See the warnings on
side panel.

Sold By: Key Builders, Gilsonia, Pa.



RIGHT PANEL

When Slime Cure is used as directed it will kill and prevent development of Chlorella Pyrenoidosa (Green), Phormidium Inundatum (Black Algae), Phormidium Retzii (Square D Algae), Lynoba Versicolor (Blue-Green) and other swimming pool algae.

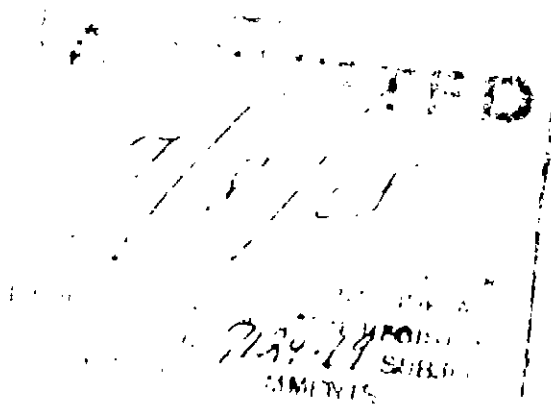
Slime Cure is compatible with most commonly used swimming pool chemicals but should not be mixed with soap or other cleaners or pre-mixed with other water treating chemicals. Slime Cure works best when added by itself directly to pool water.

CAUTION:

Harmful if swallowed from container.

Slime Cure is concentrated. Avoid contact with skin and eyes. It should be flushed from skin and eyes with water upon contact. Get medical attention should irritation persist. Slime Cure Algaecide should not come in contact with food.

Net Contents: 1 Quart



LEFT PANEL

DIRECTIONS FOR USE

Initial Dose: 6 ounces of Slime Cure Algaecide to 10,000
gallons of water.
Maintenance Dose: $1\frac{1}{2}$ ounces of Slime Cure Algaecide to 10,000
gallons of water.

Initial dose is used when filling pool at beginning of swimming season. If pool has visible algae growth, the initial dose should be repeated within 48 hours after the killed algae are removed from the pool.

Maintenance dose should be added at least once every 7 days. If high temperatures prevail or pool has unusually heavy use add maintenance dose more frequently.

If makeup water is added at the rate of more than 10% per week of pool capacity, add $1\frac{1}{2}$ ounces of Slim Cure Algaecide for each 10,000 gallons of fresh makeup water added per week.

When the swimming season is over add 6 ounces of Slime Cure Algaecide to each 10,000 gallons left in pool. This dose helps provide a measure of control of algae growth during the winter months. This treatment will also help the servicing of the pool before it is returned to use the following season.

U.S.D.A. Reg. No. 7124-17

