

7001-341

07/14/1994

1/4

Industrial Use Label



ACCEPTED
JUL 14 1994

Under the Federal Insecticide, Fungicide, and Rodenticide Act, as amended, for the pesticide registered under EPA Reg. No. 7001-341

ACTIVE INGREDIENTS:	BY WEIGHT:
Sodium Metaborate Tetrahydrate (Na ₂ B ₂ O ₄ •4H ₂ O)	68.0%
Boron Trioxide (B ₂ O ₃) equivalent - 23.1%	
Sodium Chlorate (NaClO ₃)	30.0%
INERT INGREDIENTS	2.0%
TOTAL	100.0%
EPA REG. NO. 7001-341	EPA Est. No. 49620-MS-1

KEEP OUT OF REACH OF CHILDREN

DANGER

PRECAUTIONARY STATEMENTS

HAZARDS TO HUMANS AND DOMESTIC ANIMALS

Corrosive to eyes. Causes irreversible eye damage. Wear goggles, face mask, or safety glasses with side shields. Due to corrosive nature may be harmful or fatal if swallowed. Avoid contact with eyes, skin, or clothing. Wash thoroughly with soap and water after handling. Remove and wash contaminated clothing before reuse. Avoid breathing dust. Keep animals off treated area until product has leached into the soil either by rainfall or watering.

STATEMENT OF PRACTICAL TREATMENT

- IF IN EYES, hold eye open and wash with steady gentle streams of water for 15 minutes. Get medical attention.
- IF SWALLOWED, drink promptly, a large quantity of milk, egg whites, gelatin solution or, if these are not available, drink large quantities of water. Avoid alcohol. Call a physician or Poison Control Center. Get medical attention.
- IF ON SKIN, wash with plenty of soap and water. Get medical attention.
- IF INHALED, move to fresh air and give artificial respiration if not breathing. Get medical attention.
- NOTE TO PHYSICIAN: Probable mucosal damage may contraindicate the use of gastric lavage.

ENVIRONMENTAL HAZARDS

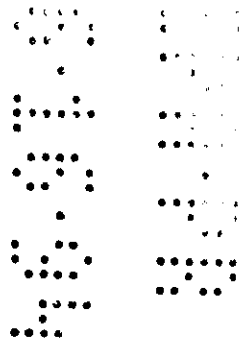
For terrestrial uses, do not apply directly to water, to areas where surface water is present or to intertidal areas below the mean high water mark. Do not apply where run-off is likely or where weather conditions favor movement away from target areas. Do not contaminate water when disposing of equipment wash waters.

STORAGE AND DISPOSAL

Do not contaminate water, food, or feed by storage or disposal. Pesticide wastes are acutely hazardous. Improper disposal of excess pesticide, spray mixture or rinsate is a violation of Federal law. If these wastes cannot be disposed of by use according to label instructions, contact your State Pesticide or Environmental Control Agency, or the Hazardous Waste representative at the nearest EPA Regional Office for guidance.

STORAGE: Avoid direct contact with floor and moisture.

DISPOSAL: Empty product from bag before disposal. Dispose of bag in a sanitary landfill or by incineration, or, if allowed by State and local authorities, by burning. If burned, stay out of smoke.



DIRECTIONS FOR USE

It is a violation of Federal law to use this product in any manner inconsistent with its labeling.

BareSpot® Monobor-Chlorate® is designed for non-selective kill of weeds and grasses with a single treatment. Use for quick knockdown of existing vegetation as well as short season effect in the soil for control of regrowth or new seedlings.

FOR USE ON NON-CROPPED AREAS

IMPORTANT: This material is not selective in action and may be toxic to all types of vegetation and may render the entire treated area totally or partially unproductive for one or more years. Care should be taken to continue the use of application to the particular area intended to be treated and to avoid its contact with lawns, trees, shrubs, crops and other desirable plants which are not intended to be destroyed or injured. This includes precautions in treating areas which may be underlaid by roots of adjacent desired growths. Careless application of this material, or washing by water run-off, to areas where desirable plants are growing or which will be used for later planting may result in injury to desirable plants. Do not drain or flush equipment on or near such areas. Do not contaminate domestic or irrigation water or waters used by fish and wildlife. Wash clothing and equipment after application. Keep animals off treated area until rainfall has leached all the herbicide into the soil. Mechanical equipment should be thoroughly cleaned after use.

WHERE TO USE

AROUND OR NEAR THE FOLLOWING: Bleachers, Bridge abutments, Buildings, Bunkers, Buried cable closures, Catwalks, Cemeteries, Compressor stations, Cooling towers, Cross connect boxes, Ditch banks, Electrical generators, Fence lines, Fire hydrants, plugs or walls, Fuel tanks, Generating plants, Guardrails, Helo pads, Highway & street markers, Loading stations, Lumber yards, Microwave towers, Oil & Gas pipelines, Oil refineries, Parking lots, Pump decks, Railroad lines & sidings, Runway lights, Runways, Sign posts, Storage & equipment yards, Utility poles & substations, Vacant lots, Valves & manifolds, Waste lagoons.

UNDER THE FOLLOWING: Asphalt, Concrete, Gravel Driveways, Sidewalks or walkways and other similar non-cropped areas.

WHEN TO USE: Use BareSpot Monobor-Chlorate anytime during the growing season. Weeds and grasses are easier to kill with BareSpot Monobor-Chlorate when they are young and growing rapidly.

INDUSTRIAL SITES OR SIMILAR NON-CROPPED AREAS

APPLICATION: BareSpot Monobor-Chlorate is ready to use! Apply with a hand operated spreader, such as a conventional cyclone type spreader, or a power spreader for larger areas. Apply granules uniformly over the area to be treated. The material becomes effective in soil, followed by rainfall or watering.

	Per 100 Sq. Feet		
	2#	3#	4#
2 ft. diameter	1 oz.	1 1/2 oz.	2 oz.
4 ft. diameter	4 oz.	6 oz.	8 oz.
6 ft. diameter	9 oz.	9 oz.	18 oz.

(1/2 rate can be used when weeds are young and growing rapidly)

GENERAL WEED CONTROL
2 LBS. PER 100 SQ. FT.

PERENNIAL WEED CONTROL
4 LBS. PER 100 SQ. FT.

Approximately 2 1/2 cups of Monobor-Chlorate equal 1 lb.

UNDER ASPHALT PAVING - For use as "preparing" residual herbicide under asphalt paving to prevent premature breakdown of paving due to weeds. It is recommended to apply BareSpot Monobor-Chlorate to the finished pre-asphalt grade. For dry application, 2-4 pounds per 100 square feet. After treatment apply at least 2 gallons of water per 100 square feet to dissolve and incorporate the herbicide in the soil. For spray application, dissolve 1-2 pounds per gallon of water and apply 1 1/2-2 gallons per 100 square feet. Where surfacing has already cracked by emergent vegetation, inject BareSpot Monobor-Chlorate in a solution of 2 pounds per gallon of water. Inject under pressure into the subsoil with a sharpened, perforated steel pipe.

NOTICE: Because of the many varying conditions affecting use and application, such as location, seasonal weather, soil composition and type of vegetation, manufacturer warns buyer that these and other conditions may impair or vary the results or effects of the use of this product. In any event, complete elimination of weeds is not guaranteed. It is advisable to consult your State Extension Service or Agricultural Experiment Station Weed Specialist on specific problems. Neither manufacturer nor seller shall be liable in respect to any injury or damages suffered by reason of the use of this product for a purpose not indicated by the label or when used contrary to the directions or instructions hereon nor with respect to breach of any warranty not expressly specified herein. Buyer accepts this material subject to these terms and assumes all risks of usage and handling except when used or handled in accordance with this label. Neither manufacturer nor seller makes, and their employees and agents are not permitted to make, any representations or warranties, express or implied by law, not specifically set forth herein.

DISCLAIMER: J. R. Simplot Company warrants only that the material contained herein conforms to the chemical description of the label and is reasonably fit for the use therein described when used in accordance with the DIRECTIONS FOR USE. It is impossible to eliminate all risks associated with use of this product. Injury to desired vegetation, ineffectiveness or other unintended consequences may result because of such factors such as weather conditions, presence of other minerals, soil conditions, or the manner of use or application, all of which are beyond consequential commercial damages such as loss of profits or values of any other special or indirect damage. J. R. Simplot Company makes no other expressed or implied warranty, including any other express or implied warranty, of FITNESS or of MERCHANTABILITY.

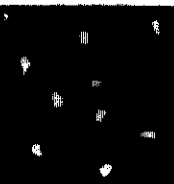
NET WEIGHT 50 LBS.

Compare with these illustrations to determine your approximate rate of application:

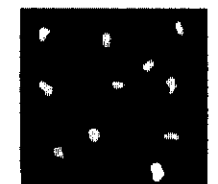
1/2 lb. per 100 sq. ft.



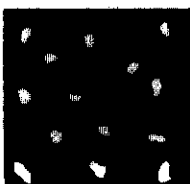
1 lb. per 100 sq. ft.



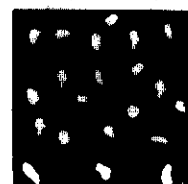
1 1/2 lbs. per 100 sq. ft.



2 lbs. per 100 sq. ft.



3 lbs. per 100 sq. ft.



Residential
Use Label



Monobor-Chlorate

Granular, Non-selective, Residual Herbicide

For Non-Selective Kill of Weeds and Grasses with a Single Treatment!

ACCEPTED
JUL 14 1994
Under the Federal Insecticide, Fungicide, and Herbicide Act as amended, for the pesticide registered under EPA Reg. No. 7001-341

USE AROUND OR NEAR:

- Asphalt
- Buildings
- Concrete
- Ditch banks
- Fence lines
- Gravel driveways
- Patios
- Picnic areas
- Sidewalks/Walkways
- Storage yards
- Vacant lots
- Wood Decks

Active Ingredients	By WT.
Sodium Metaborate Tetrahydrate (Na ₂ B ₂ O ₄ • 4H ₂ O)	68.0%
Boron Trioxide (B ₂ O ₃) equivalent -	23.1%
Sodium Chlorate (NaClO ₃)	30.0%
INERT INGREDIENTS	2.0%
TOTAL	100.0%

EPA REG. NO. 7001-341

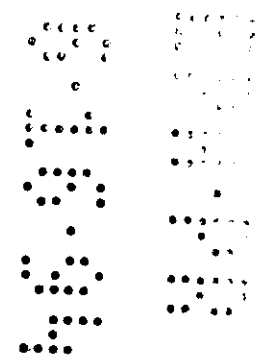
EPA EST. NO. 49620-MS-1

KEEP OUT OF REACH OF CHILDREN

DANGER

REFER TO BACK PANEL FOR PRECAUTIONARY STATEMENTS

NET WEIGHT: 20 LBS.



PRECAUTIONARY STATEMENTS HAZARDS TO HUMANS AND DOMESTIC ANIMALS

Corrosive to eyes. Causes irreversible eye damage. Wear goggles, face mask, or safety glasses with side shields. Due to corrosive nature, may be harmful or fatal if swallowed. Avoid contact with eyes, skin, or clothing. Wash thoroughly with soap and water after handling. Remove and wash contaminated clothing before reuse. Avoid breathing dust. Keep animals off treated area until product has leached into soil either by rainfall or watering.

DIRECTIONS FOR USE

It is a violation of Federal law to use this product in any manner inconsistent with its labeling. For quick knockdown of existing vegetation as well as short season effect in the soil for control of regrowth or new seedlings.

WHEN TO USE: Use BareSpot® Monobor-Chlorate® anytime during the growing season. Weeds and grasses are easier to kill when they are young and growing rapidly.

WHERE TO USE: Apply where bare ground is desired. Do not apply near lawns, trees, shrubs, crops, and other desirable plants. Do not treat areas which may be underlaid by roots of adjacent desired growths. Application to these areas may result in injury or destruction of the plant.

HOW IT WORKS: When applied as a granular, BareSpot Monobor-Chlorate is absorbed by the roots, causing weeds or grasses to turn brown. Smaller, succulent weeds are affected first. Larger plants will yellow and turn brown at the tips as growth stops. It will take several days before visual signs are noticeable. A residual barrier remains active in the upper soil to control later germinating weeds.

BareSpot Monobor-Chlorate kills the seedlings not the seeds. Seedlings will sprout. After they reach 1/2 to 1 inch of growth and the root contacts the soil, it will die. BareSpot Monobor-Chlorate can be expected to provide 3 to 6 months control depending on soil type and rainfall.

DRY APPLICATION: BareSpot Monobor-Chlorate is ready to use! Apply with a hand operated spreader, such as a conventional cyclone type spreader, or a power spreader for larger areas. Apply granules uniformly over the area to be treated. The material becomes effective in the soil, followed by rainfall or watering.

	Per 100 Sq. Feet		
	2#	3#	4#
2 ft. diameter	1 oz.	1 1/2 oz.	2 oz.
4 ft. diameter	4 oz.	6 oz.	8 oz.
6 ft. diameter	9 oz.	9 oz.	18 oz.

(1/2 rate can be used when weeds are young and growing rapidly)

GENERAL WEED CONTROL

2 LBS. PER 100 SQ. FT.

PERENNIAL WEED CONTROL

4 LBS. PER 100 SQ. FT.

Approximately 2 1/2 cups of Monobor-Chlorate equal 1 lb.

FOR USE ON NON-CROPPED AREAS

IMPORTANT: This material is not selective in action and may be toxic to all types of vegetation and may render the entire treated area totally or partially unproductive for one or more years. Care should be taken to continue the use of application to the particular area intended to be treated and to avoid its contact with lawns, trees, shrubs, crops and other desirable plants which are not intended to be destroyed or injured. This includes precautions in treating areas which may be underlaid by roots of adjacent desired growths. Careless application of this material, or washing by water run-off, to areas where desirable plants are growing or which will be used for later planting may result in injury to desirable plants. Do not drain or flush equipment on or near such areas. Do not

contaminate domestic or irrigation water or waters used by fish and wildlife. Wash clothing and equipment after application. Keep animals off treated area until rainfall has leached all the herbicide into the soil. Mechanical equipment should be thoroughly cleaned after use.

STATEMENT OF PRACTICAL TREATMENT

IF IN EYES: Hold eye open and wash with steady gentle stream of water for 15 minutes. Get medical attention. **IF SWALLOWED:** Drink promptly, a large quantity of milk, egg whites, gelatin solution or, if these are not available, drink large quantities of water. Avoid alcohol. Call a physician or Poison Control Center. Get medical attention. **IF ON SKIN:** Wash with plenty of soap and water. Get medical attention. **IF INHALED:** Move to fresh air and give artificial respiration if not breathing. Get medical attention. **NOTE TO PHYSICIAN:** Probable mucosal damage may contraindicate the use of gastric lavage.

ENVIRONMENTAL HAZARDS

For terrestrial uses, do not apply directly to water, to areas where surface water is present, or to intertidal areas below the mean high water mark. Do not apply where run-off is likely or where weather conditions favor movement away from target areas. Do not contaminate water when disposing of equipment wash waters.

STORAGE AND DISPOSAL

STORAGE: Avoid contact with floor and moisture. Store in an area inaccessible to children and pets. **DISPOSAL:** Securely wrap original container in several layers of newspaper and discard in trash. Do not reuse bag. Discard bag in trash.

NOTICE: Because of the many varying conditions affecting use and application, such as location, seasonal weather, soil composition and type of vegetation, manufacturer warns buyer that these and other conditions may impair or vary the results or effects of the use of this product. In any event, complete elimination of weeds is not guaranteed. It is advisable to consult your State Extension Service or Agricultural Experiment Station Weed Specialist on specific problems. Neither manufacturer nor seller shall be liable in respect to any injury or damages suffered by reason of the use of this product for a purpose not indicated by the label or when used contrary to the directions or instructions hereon nor with respect to breach of any warranty not expressly specified herein. Buyer accepts this material subject to these terms and assumes all risks of usage and handling except when used or handled in accordance with this label. Neither manufacturer nor seller makes, and their employees and agents are not permitted to make, any representations or warranties, express or implied by law, not specifically set forth herein.

DISCLAIMER: J.R. Simplot Company warrants only that the material contained herein conforms to the chemical description of the label and is reasonably fit for the use therein described when used in accordance with the DIRECTIONS. It is impossible to eliminate all risks associated with use of this product. Injury to desired vegetation, ineffectiveness or other unintended consequences may result because of such factors as weather conditions, presence of other minerals, soil conditions, or the manner of use or application, all of which are beyond consequential commercial damages, such as loss of profits or values of any other special or indirect damage. J.R. Simplot Company makes no other expressed or implied warranty, including any other express or implied warranty of FITNESS or MERCHANTABILITY.