

BEST AVAILABLE COPY

AUG 10 1984

CERTIFIED MAIL

Ms. Lisa J. Strong
J. R. Simplot Co.
P.O. Box 198
Lathrop, CA 95330

Dear Ms. Strong:

Subject: Dicofol 4EC
EPA Registration No. 7001-259

During the Agency's development of the registration standard for dicofol we noted several labeling discrepancies that exist with the current label which need to be corrected. The problems generally center on excessive and inadequate dosage rates, inappropriate preharvest intervals or crops listed on the labels with no finite tolerances. Please refer below for the specific problem(s) for your product.

Delete corn from the label since this one was cancelled by PR Notice 71-3.

The correct PHI for tomatoes is 21 days.

Please submit revised draft labeling correcting the labeling error(s) within six months. To assist me in resolving these discrepancies, the subject in your response letter heading should read "Dicofol Labeling Discrepancies" and should be addressed to Edward Allen, Assistant Manager (12). If you have any question regarding this letter please contact Mr. Allen at (703) 557-2386.

Sincerely yours,

Jay S. Ellenberger
Product Manager (12)
Insecticide-Rodenticide Branch
Registration Division (TS-767)

RD:Ellenberger:DCR-28572;WANG-0379K:bje:Raven:479-2023:8/2/84

CONCURRENCES

SYMBOL ▶								
SURNAME ▶								
DATE ▶								

Ms. Lisa J. Strong
J. R. Simplot Co.
P.O. Box 198
Lathrop, CA 95330

Dear Ms. Strong:

Subject: Dicofol 4EC
EPA Registration No. 7001-259
Your Application Dated October 19, 1983

The labeling referred to above, submitted in connection with registration under the Federal Insecticide, Fungicide and Rodenticide Act, as amended, is acceptable. A stamped copy is enclosed for your records.

Sincerely yours,

Jay S. Ellenberger
Product Manager (12)
Insecticide-Rodenticide Branch
Registration Division (TS-767)

Enclosure

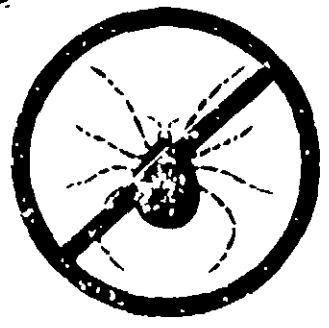
RD:ELLENBERGER:DCR-28442:WANG-1271C:vgr:Raven:479-2013:11/21/83

CONCURRENCES

SYMBOL ▶								
SURNAME ▶								
DATE ▶								

7001-259

Dicofol



ACTIVE INGREDIENTS:	BY WT.
1,1-Bis(4-chlorophenyl)-2,2,2-trichloroethanol	41.1%
INERT INGREDIENTS:	58.9%
TOTAL	100.0%

EPA Reg No 7001-259
EPA Est No 7001-CA-1 Contains 2.5 Oz. per gallon

KEEP OUT OF REACH OF CHILDREN
CAUTION

Avoid skin contact. Wash thoroughly after using. Avoid inhalation of dust. If swallowed, if taken internally get medical attention. Do not store near feed or foodstuffs.
This product will kill on contact if applied to water.

STATEMENT OF PRACTICAL TREATMENT

IF SWALLOWED: Call a physician immediately if no other treatment is available induce vomiting or give victim one or two glasses of water and insert finger in back of throat. Repeat until vomit fluid is clear. Do not induce vomiting or give anything by mouth to an unconscious person.
IF INHALED: Remove victim to fresh air. Apply respiration if necessary. If irregular or has stopped, call a physician immediately.
IF ON SKIN: Wash immediately with soap and water.
IF IN EYES: Flush eyes for at least 15 minutes with water. Call a physician immediately.

DEC 5 1983

7001-259

4000

BEST AVAILABLE COPY

20 4061
12/8 4 7001 229
p. 12

DIRECTIONS FOR USE

STORAGE AND DISPOSAL

Do not use this product in a manner inconsistent with its labeling.

Contaminate water, food or feed by storage or disposal. Open dumping prohibited.

Do not spray mixture or rinse that cannot be used or chemically reprocessed.

Do not be disposed of in a landfill approved for pesticides or buried in a safe place away from water supplies.

Triple rinse (or equivalent) and dispose of in an incinerator or landfill approved for pesticides or bury in a safe place.

Consult federal, state or local disposal authorities for approved alternative procedures such as limited open burning.

DIRECTIONS FOR DILUTION

DILUTE APPLICATION: *Ground Application:* Apply specified rate in 20 to 60 gallons of water per acre. *Orchard Application:* Apply specified rate in 100 to 800 gallons of water per acre.

CONCENTRATE APPLICATION: *Ground Application:* Apply specified rate in not less than 5 gallons of water per acre. *Orchard Application:* Apply specified rate in 20 to 100 gallons of water per acre. Special concentrate equipment necessary for these uses.

AIR APPLICATION: Apply specified rate in 5 to 20 gallons of water per acre. Orchard rates should not be applied in less than 10 gallons of water per acre.

Alfalfa, Clover (Both grown for seed only-use restricted to California, Idaho, Nevada, Oregon and Washington): *Carmine, Pacific, Strawberry and Two-Spotted Mites.* Apply 1/2 to 1-1/2 qts. per acre. Do not graze livestock in treated fields or feed crop residues or cuttings to livestock or bale it for feed. Field must be cleared by burning crop residues or by discing them into the soil.

Apples (Western states only): *Apple Rust, Brown, European Red, McDaniel, Pacific Spider, Schoene Spider, Willamette and Yellow Spider Mites.* Apply 1-1/2 to 4 qts. per acre. Do not apply within 7 days of harvest. Dicolol should not be used in late cover sprays with glyphid as plant injury may result. Dicolol may cause fruit spotting under certain conditions and only the lower dosages should be used. Control for *Brown Mite* and *European Red Mite* on pears are for clean-up of late spray population. Repeat as needed, but allow 30 days between treatments.

Apricots: *Brown, European Red, Pacific Spider, Peach Silver, Plum Rust, Two-Spotted Spider and Willamette Mites.* Apply 1-1/2 to 2-1/2 qts. per acre. Allow 30 days between treatments. Do not apply within 14 days of harvest.

Beans: *Carmine Spider, Strawberry Spider, Pacific Spider, Two-Spotted Mites.* Apply 1/3 to 1-1/2 qts. per acre other than California. Apply 7 days before harvest through 1/2 qt. per acre. Apply 1/2 to 1-1/2 qts. 21 days before harvest. *California Only:* Apply 3/4 to 1-1/2 qts. 45 days before harvest. Do not feed treated fresh hay or spent hay to dairy or meat animals.

Blackberries: *Brown, European Red, McDaniel Spider, Pacific Spider, Two-Spotted Spider, Willamette and Yellow Spider Mites.* Apply 1/2 to 1 qt. per acre. Do not apply within 2 days of harvest.

Cherries: *Brown, European Red, McDaniel Spider, Pacific Spider, Peach Silver, Plum Rust, Two-Spotted Spider, Willamette and Yellow Spider Mites.* Apply 1-1/2 to 2-1/2 qts. per acre. Do not apply within 7 days of harvest. Repeat if needed, but allow 30 days between treatment.

Citrus (Grapefruit, Kumquats, Lemons, Limes, Oranges, Tangelos, Tangerines): *Citrus Flat, Citrus Red, Citrus Rust, Six-Spotted, Texas Citrus, Yuma Spider, Pacific Spider, Two-Spotted Spider Mites.* Apply 1-1/2 to 4 qts. per acre. Do not apply within 7 days of harvest.

Corn (Desert): *Desert Spider, Pacific Spider, Two Spotted Spider, Strawberry Spider Mites.* Apply 3/4 to 1-1/2 qts. per acre. Do not apply within 14 days of harvest. Do not graze dairy or meat animals in treated fields or feed gin trash to them.

Corn (Field): *Two-Spotted Spider, Pacific Spider and Grass Mites.* Early Season Control. Only Apply 3 pints per acre. Apply when mites first appear and repeat if necessary. Do not apply after ears begin to form. Do not use treated corn plants for ensilage or as forage for livestock. The field must be cleared by burning residues or discing into the soil.

Cucumbers, Melons (Including Watermelons), Pumpkins, Squash: *Pacific Spider Mite, Two-spotted Spider Mite.* Apply 1/3 to 2/3 pts. per acre. Do not apply within 2 days of harvest.

Raspberries: *Apple Rust Mite, Brown Mite, European Red Mite, McDaniel Spider Mite, Pacific Spider Mite, Schoene Spider Mite, Yellow Spider Mite, Two Spotted Spider Mite, Willamette Mite.* Apply 1/2 to 4 qts. per acre. Claims for *Brown Mite* and *European Red Mite* are for clean-up of late spring populations. Repeat as needed, but allow 30 days between treatments. As a preventive schedule apply 1/2 pint per acre. Make two successive applications at 10 to 14 day intervals.

Dewberries (Including Boysenberries, Loganberries, Olalie Berries): *Brown, European Red, McDaniel Spider, Pacific Spider, Willamette, Yellow Spider Mite.* Apply 1/2 to 1 qt. per acre. Do not apply within 2 days of harvest.

Figs: *European Red Mite, Pacific Spider Mite, Two-Spotted Spider Mite.* Apply 1-1/2 to 2 qts. per acre. Do not apply within 7 days of harvest. Do not feed treated husks to livestock.

Flowers, Walnuts, Hickory Nuts, Pecans, Chestnuts: *Brown Mite, European Red, Two-Spotted Spider, Pacific Spider Mites, Yellow Spider Mite.* Apply 1-1/2 to 4 qts. per acre. Do not apply within 14 days of harvest. Do not feed treated husks to livestock.

Grapes: *European Red, McDaniel Spider, Pacific Spider, Two-Spotted Spider, Willamette Mites.* Apply 1/2 to 1 qt. per acre. Do not apply within 7 days of harvest.

Hops: *Pacific Spider, Two-Spotted Spider Mite.* Apply 1/2 to 1 qt. per acre. Do not apply within 7 days of harvest.

Mint (Peppermint & Spearmint for oil production): *Two-Spotted Spider Mite.* Apply 3/4 to 1 qt. per acre. Do not apply within 30 days of harvest. Do not make more than one application per crop season. Do not feed treated fresh hay or spent hay to livestock.

Nectarines, Peaches: *Brown Mite, European Red, McDaniel Spider, Pacific Spider, Peach Silver, Schoene Spider, Two-Spotted Spider, Yellow Spider Mites.* Apply 1-1/2 to 2-1/2 qts. per acre. Do not apply within 14 days of harvest.

Pears: *Apple Rust Mite, Brown Mite, European Red Mite, McDaniel Spider, Pacific Spider, Schoene Spider, Two-Spotted Spider, Willamette, Yellow Spider Mite.* Apply 1-1/2 to 4 qts. per acre. Claims for *Brown Mite* and *European Red Mite* are for clean-up of late spring populations. Repeat as needed, but allow 30 days between treatments. Dicolol should not be used in late cover sprays with glyphid as plant injury may result.

Peppers, Tomatoes: *Pacific Spider, Tomato Russet, Tropical Spider, Two-Spotted Spider Mites.* Apply 1/2 to 3/4 qts. per acre. Do not apply within 2 days of harvest.

Plums, Prunes: *Brown Mite, European Red, McDaniel Spider, Pacific Spider, Peach Silver, Plum Rust, Two-Spotted Spider Mites.* Apply 1-1/2 to 2 qts. per acre. Do not apply within 7 days of harvest. Repeat if needed, but allow 30 days between treatments.

Quince: *Apple Rust, Brown, European Red, McDaniel Spider, Pacific Spider, Schoene Spider, Two-Spotted Spider, Willamette, Yellow Spider Mites.* Apply 1-1/2 to 4 qts. per acre. Do not apply within 7 days of harvest.

Raspberries: *European Red, McDaniel Spider, Pacific Spider, Two-Spotted Spider, Willamette, Yellow Spider Mites.* Apply 1/2 to 1 qt. per acre. Do not apply within 2 days of harvest.

Strawberries: *Strawberry Spider, Two-Spotted Spider Mites.* Apply 1/4 to 2 qts. per acre.

Cyclamen Mites: Apply 2 qts. per acre. Do not apply within 2 days of harvest, to control.

Cyclamen Mites: make 2 or 3 applications at 10 to 20 day intervals starting when new spring growth begins. Sprays should be thoroughly drenching, high pressure applications. Small areas of infestation may also be treated during the production season.

ORNAMENTALS

Lawns, Turf: *Bermudagrass - Clover Mites.* Apply 1 oz. in 2.5 gallons of spray per 1,000 sq. ft. Repeat in 10 to 14 days if needed. For *Clover Mite* be sure to treat areas at base of buildings.

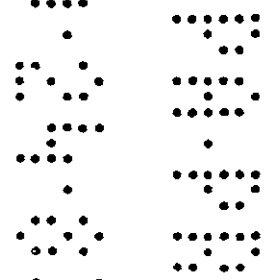
Flowering Plants (Including African Violets, Chrysanthemums, Sweet Peas), Orchids, Shrubs, Trees, Vines, Nursery Stock: *Mites.* Apply 1 oz. in 2.5 gallons of water. Thoroughly cover upper and lower leaf surfaces. Wet to the dripping point.

DISCLAIMER OF WARRANTIES: Seller warrants that the chemical composition of this product conforms to the chemical description given on this label. THIS WARRANTY IS EXPRESSLY IN LIEU OF ALL OTHER WARRANTIES AND REPRESENTATIONS EXPRESSED IMPLIED OR STATUTORY INCLUDING WARRANTIES OF MERCHANTABILITY AND FITNESS FOR A PARTICULAR USE. Timing, rate and method of application, weather and crop conditions, mixtures of chemicals not specifically recommended on this label or all accompanying written recommendations are beyond the control of seller. Buyer assumes all risks of use, storage and handling of this material not in strict accordance with directions given hereon. Buyer further agrees in the event of damages arising from the use of the product to accept a replacement of the product or a refund of the purchase price of the product or both, at seller's option, as the discharge of seller's liability. No one is authorized to make any other warranties, guarantees or directions concerning this product and no such warranties, guarantees or directions shall be validly binding upon seller.

J.R. SIMPLOT COMPANY
P.O. BOX 198
LATHROP, CA 95330

NET CONTENTS 5 GALLONS

STORAGE - THIS PRODUCT MUST BE STORED AT TEMPERATURES ABOVE 40 F.
STORAGE BELOW MAY AFFECT THE QUALITY OF THE PRODUCT.



OFFICIAL FILE COPY