



You Get Results With

**\$12<sup>95</sup>**

**BEST**

THIS BAG FEEDS 5,000 SQ. FT.

# Lawn Food

20-4-4 PLUS

## Crabgrass Preventer

GUARANTEED ANALYSIS	
Total Nitrogen	20.0%
Ammonia Nitrogen	6.0%
Water-Soluble Nitrogen Marketed from Urea	14.0%
Available Phosphoric Acid Marketed from Monocalcium Phosphate	4.0%
Water Soluble Potash Marketed from Potassium Chloride	4.0%
Crabgrass Control expressed as chemical Marketed from	
Diflufenican & Sulfentrazone	0.6%
Iron expressed as elemental Marketed from Sulfate & Sulfite	0.70%
Manganese expressed as elemental Marketed from	
Sulfate & Sulfite	0.05%
Zinc expressed as elemental Marketed from Sulfate & Sulfite	0.05%

**DESCRIPTION**

1. Balanced Fertilizer is designed to give lawns a complete feeding of nitrogen, phosphorus and potash. Iron has been added to correct iron deficiency common in Western soils.
2. Controls crabgrass, annual bluegrass (poa annua), goosegrass, hairywood, knotgrass, yellow and green foxtail by killing their seeds in the germination.

**WHEN TO USE**

Best Lawn Food Plus Crabgrass Preventer may be used in spring or fall. For crabgrass, apply in spring before crabgrass germination. For annual bluegrass, apply in late summer or early fall before annual bluegrass germination. Apply prior to weedgrass germination since this product will not control established weeds.

**DIRECTIONS FOR USE**

1. May be used for both warm season grasses, such as Bermudagrass, St. Augustinegrass, Zoysiagrass, Centipedegrass and Bahiagrass and cool season grasses, such as perennial Ryegrass, perennial Ryegrass and Fescue.
2. Spread the contents of this bag evenly over your lawn. The settings listed below are for one-half inch. Go over the lawn twice at right angles to ensure complete coverage.
3. Lawns may be watered after application. Keep children and pets off treated area until material is washed off leaf surfaces and the blades are dry.
4. Warm Season Grasses: Apply in late Winter or early Spring prior to crabgrass germination. A second application may be made four to six months later in areas where annual weed grasses continue to germinate into early Fall. For control of annual bluegrass (poa annua) apply in late Summer or early Fall. Warm Season grasses include Bermudagrass, St. Augustinegrass, Zoysiagrass, Centipedegrass and Bahiagrass. At the setting listed below the contents of this bag will treat 5,000 sq. ft.
5. Cool Season Grasses: Apply in early Spring prior to crabgrass germination. For control of annual bluegrass (poa annua), apply in late Summer or early Fall, or in the early Spring prior to annual bluegrass germination. Cool Season grasses include



You Get Results With

**\$12<sup>95</sup>**

**BEST**

THIS BAG FEEDS 5,000 SQ. FT.

You Get Results With

**BEST**

**Crabgrass Preventer**  
 20-4-4 PLUS  
**LAWN FOOD**

# Lawn Food

20-4-4 PLUS

## Crabgrass Preventer

**Lawn Food**  
 20-4-4 PLUS  
**Crabgrass Preventer**

**FOR GRASS LAWNS**

1. FEEDS YOUR LAWN
2. Prevents Crabgrass before it starts



You Get Results With  
**\$12.95** **BEST** **WEBS 5,000 SQ. FT.**

# Lawn Food

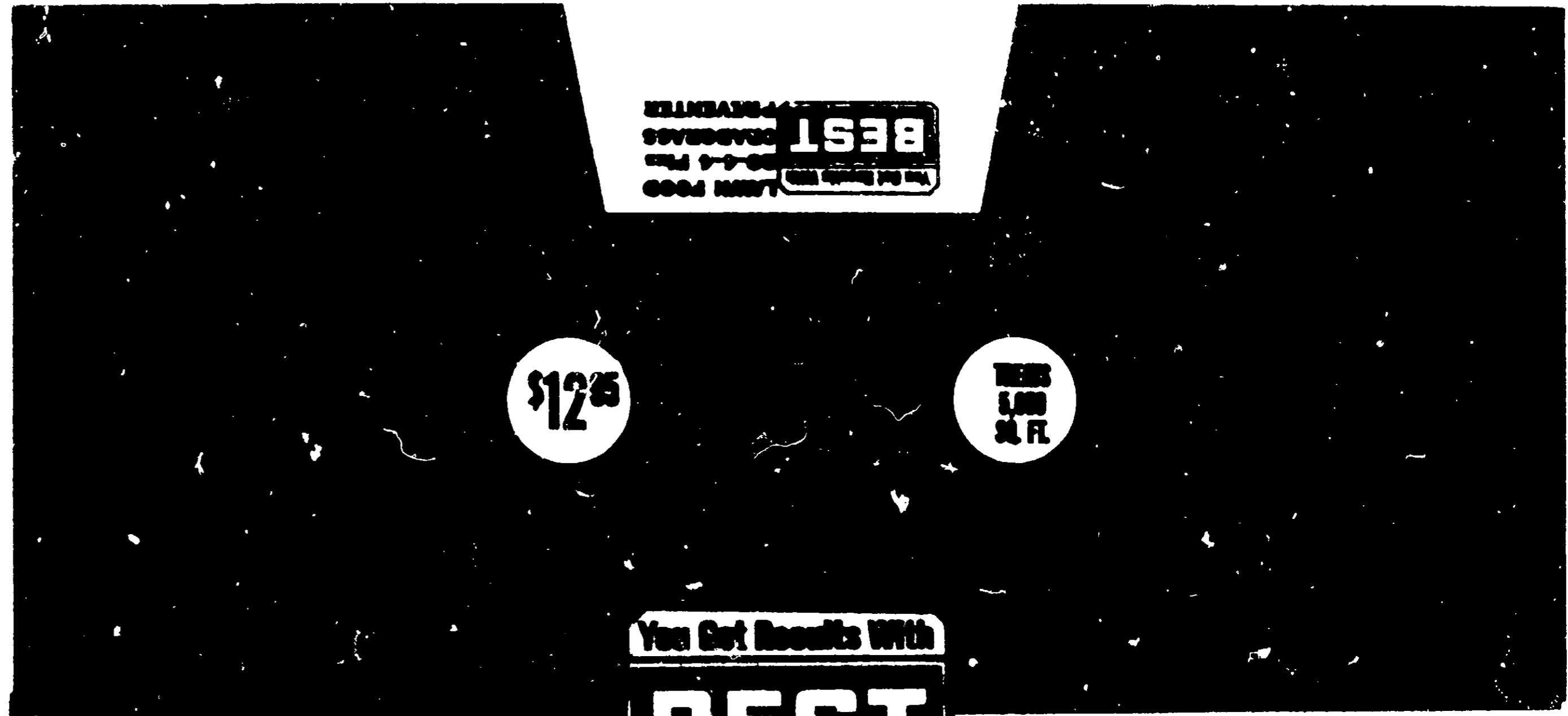
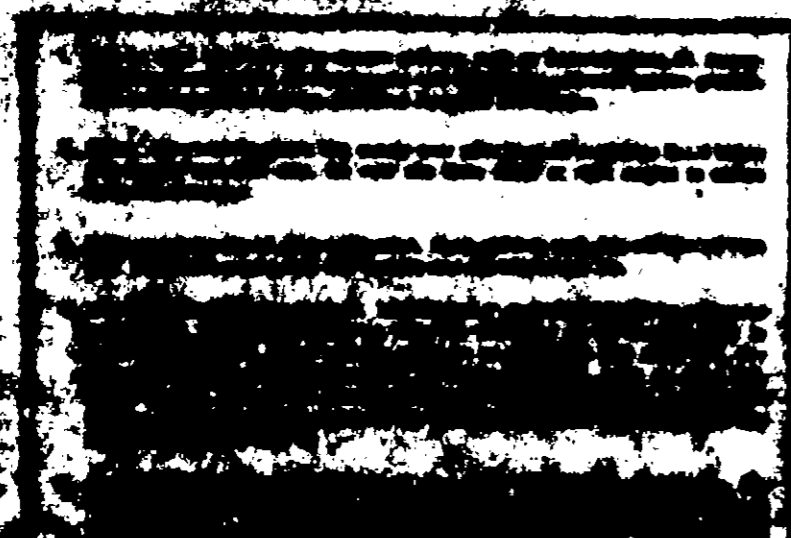
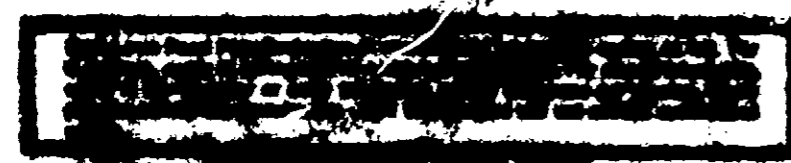
20-4-4 PLUS

## Crabgrass Preventer

<b>Total Weight:</b>	5.000	5.000
Ammonia Nitrogen (Nitrogen Source) Used	2.000	2.000
Available Phosphorus Acid (Phosphorus Source) P <sub>2</sub> O <sub>5</sub>	0.400	0.400
Water Soluble Potash (Potassium Source) K <sub>2</sub> O	0.400	0.400
Crabgrass Pre-emptive as directed (Crabgrass Pre-emptive)	0.200	0.200
Other Ingredients	0.000	0.000
Net Weight as directed (Net Weight) (Crabgrass Pre-emptive & Other)	0.000	0.000
Net Weight as directed (Net Weight) (Crabgrass Pre-emptive & Other)	0.000	0.000
Net Weight as directed (Net Weight) (Crabgrass Pre-emptive & Other)	0.000	0.000

1. Apply to lawn as directed to give lawn a complete feeding of nitrogen, phosphorus and potash. Use less than listed to correct a deficiency in any of these elements.

2. Apply to lawn as directed to prevent crabgrass, annual weeds, and other weeds from growing. Use less than listed to correct a deficiency in any of these elements.



**\$12.95** **BEST** **WEBS 5,000 SQ. FT.**

You Get Results With  
**BEST**

# Lawn Food

20-4-4 PLUS

## Crabgrass Preventer

Crabgrass Preventer  
 20-4-4 PLUS  
**LAWN FOOD**

**LAWN FOOD**  
 20-4-4 PLUS  
 Crabgrass Preventer

- FOR GRASS LAWNS**
1. FEEDS YOUR LAWN
  2. Prevents Crabgrass before it grows



You Get Results With

**\$12<sup>95</sup>**

**BEST**

20-4-4 PLUS

# Lawn Food

20-4-4 PLUS

## Crabgrass Preventer

DESCRIPTION	PERCENTAGE	AMOUNT
Fast Nitrogen	20.0%	20.0%
Ammonia Nitrogen	4.0%	4.0%
Water-Soluble Nitrogen (from Urea)	12.0%	12.0%
Available Phosphate Acid (from Super Phosphate)	4.0%	4.0%
Water Soluble Potash (from Potassium Sulfate)	4.0%	4.0%
Combined Sulfur (expressed as elemental Sulfur)	0.0%	0.0%
Sulfur & Sulfonol	0.0%	0.0%
Iron (expressed as elemental Iron from Sulfite & Sulfonol)	0.70%	0.70%
Manganese (expressed as elemental Manganese)	0.0%	0.0%
Zinc (expressed as elemental Zinc from Sulfite & Sulfonol)	0.0%	0.0%

- WHEN TO USE**
1. Balanced Fertilizer is designed to give lawn a complete feeding of nitrogen, phosphorus and potash. Iron has been added to correct a deficiency common in Western soils.
  2. Controls crabgrass, annual bluegrass (poa annua), goosegrass, bentgrass, green bromehead, yellow and green foxtail by killing their seeds as they germinate.

**DIRECTIONS FOR USE**

Best Lawn Food Plus Crabgrass Preventer may be used in spring or fall. For crabgrass, apply in spring before crabgrass germination. For annual bluegrass, apply in late summer or early fall before annual bluegrass germination. Apply prior to crabgrass germination since this product will not control established weeds.

1. May be used for both warm season grasses, such as Bermudagrass, St. Augustinegrass, Zoysiagrass, Centipedegrass and Bahiagrass and cool season grasses, such as perennial bluegrass, perennial ryegrass and Fescue.
2. Spread the contents of this bag evenly over your lawn. The settings listed below are for one-half inch. Go over the lawn twice at right angles to assure complete coverage.
3. Lawns may be mowed after application. Keep children and pets off treated area until mowed or washed off hot surface and the blades are dry.
4. Warm Season Grasses: Apply in late winter or early spring prior to crabgrass germination. A second application may be made later in the season later in the season when annual weed germination begins. For control of annual bluegrass (poa annua) apply in late summer or early fall. Warm Season grasses include Bermudagrass, St. Augustinegrass, Zoysiagrass, Centipedegrass and Bahiagrass. At the setting listed below the contents of this bag will treat 5,000 sq. ft.
5. Cool Season Grasses: Apply in early spring prior to crabgrass germination. For control of annual bluegrass (poa annua), apply in late summer or early fall, or in the early spring prior to poa annua germination. Cool Season grasses include perennial bluegrass, perennial ryegrass, Fescue. For cool season grasses the contents of this bag will treat 7,000 sq. ft.



Crabgrass Preventer

20-4-4 PLUS

**Lawn Food**

# Lawn Food

20-4-4 PLUS

## Crabgrass Preventer

Lawn Food

20-4-4 PLUS

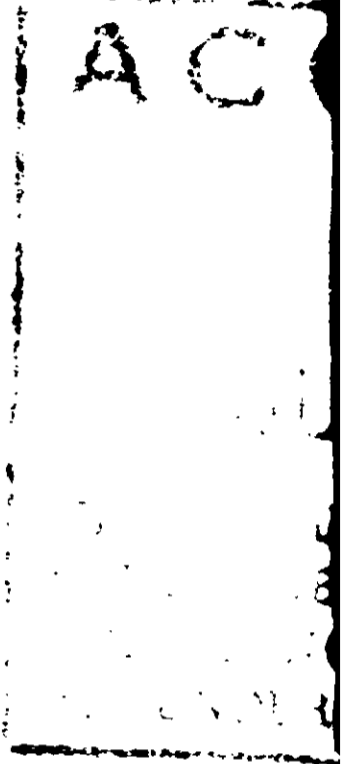
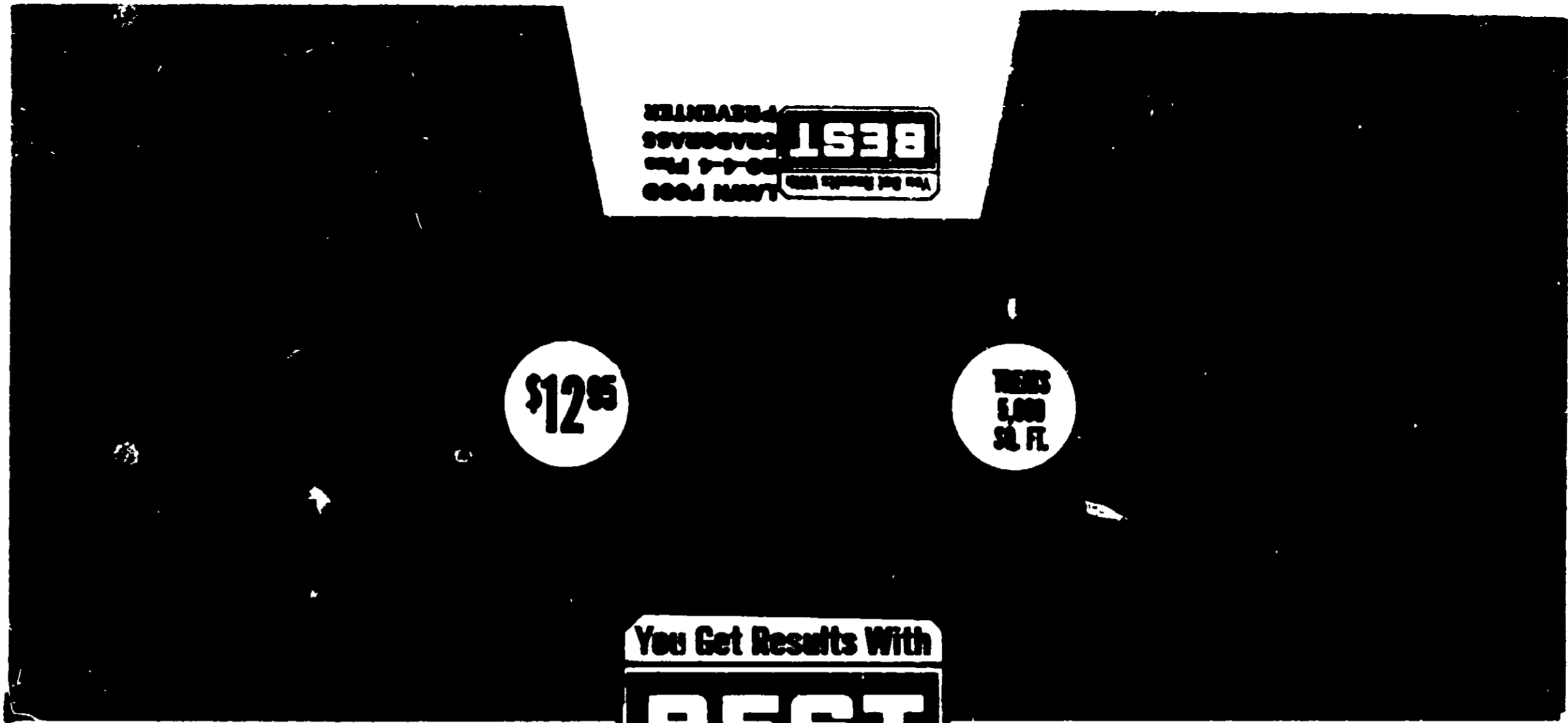
Crabgrass Preventer

- FOR GRASS LAWNS**
1. FEEDS YOUR LAWN
  2. Prevents Crabgrass before it grows

AC

JU

UNDER THE FUNGICIDE FOR ECON ED UNDEF



**\$12<sup>95</sup>** **You Get Results With**  
**BEST** **FEEDS 5,000 SQ. FT.**

**\$12<sup>95</sup>** **You Get Results With**  
**BEST** **FEEDS 5,000 SQ. FT.**

# Lawn Food

20-4-4 PLUS

## Crabgrass Preventer

**GUARANTEED ANALYSIS**

Total Nitrogen	20.0%	20.0%
Available Nitrogen	8.0%	
Water Soluble Nitrogen Derived from Urea	12.0%	
Available Phosphoric Acid Derived from Muratic Acid	4.0%	
Water Soluble Phosphoric Acid Derived from Muratic Acid	4.0%	
Condensed Sulfur expressed as elemental Sulfur derived from Sulfuric Acid	0.0%	
Iron expressed as elemental Iron derived from Sulfate & Sulfide	0.75%	
Manganese expressed as elemental Manganese derived from Sulfate & Sulfide	0.05%	
Zinc expressed as elemental Zinc derived from Sulfate & Sulfide	0.05%	

- DESCRIPTION**
1. Released fertilizer is designed to give lawn a complete feeding of nitrogen, phosphorus and potash. Iron has been added to correct a deficiency common in Western soils.
  2. Controls crabgrass, annual bluegrass (Poa annua), goosegrass, carpet grass, bermudagrass, yellow and green foxtail by killing their seeds as they germinate.

**WHEN TO USE**

Best Lawn Food Plus Crabgrass Preventer may be used in spring or fall. For annual bluegrass, apply in spring before crabgrass germination. For annual bluegrass, apply in late summer or early fall before annual bluegrass germination. Apply prior to crabgrass germination since this product will not control established weeds.

- DIRECTIONS FOR USE**
1. May be used for both warm season grasses, such as Bermudagrass, St. Augustinegrass, Zoysiagrass, Centipedegrass and Bahiagrass and cool season grasses, such as perennial bluegrass, perennial ryegrass and fescue.
  2. Spread the contents of the bag evenly over your lawn. The settings listed below are set for one-half rate. Go over the lawn twice at right angles to insure complete coverage.
  3. Lawn may be watered after application. Keep children and pets off treated area until material is washed off wet surface and the blades are dry.
  4. Warm Season Grasses: Apply in late winter or early spring prior to crabgrass germination. A second application may be made four to six weeks later in areas where a second crabgrass germination is predicted. For annual bluegrass, apply in late summer or early fall before annual bluegrass germination. For annual bluegrass, apply in late summer or early fall. Warm Season grasses include Bermudagrass, St. Augustinegrass, Zoysiagrass, Centipedegrass and Bahiagrass. At the setting listed below the contents of this bag will treat 5,000 sq. ft.
  5. Cool Season Grasses: Apply in early spring prior to crabgrass germination. For control of annual bluegrass (Poa annua), apply in late summer or early fall, or in the early spring prior to crabgrass germination. Cool Season grasses include perennial bluegrass, perennial ryegrass, fescue. For cool season grasses the contents of this bag will treat 7,000 sq. ft.
  6. Grass seed may be planted 12 to 14 weeks after application. When reseeding a lawn, further applications of this product should be delayed until the lawn is well established.
- CAUTION:** Do not use on Dandelion Lawns. Do not apply in the Spring to lawns dormant the previous Fall. Do not apply to putting greens. Do not apply to newly sprigged areas of Bermudagrass, St. Augustine or Centipedegrass.
7. Suggested Spreader Settings - 1 lb. per 500 sq. ft.
- SPREADER SETTINGS** (See Lawn Food Plus Crabgrass Preventer Bag for Details)

**Crabgrass Preventer**  
**Lawn Food**  
 20-4-4 PLUS

# Lawn Food

20-4-4 PLUS

## Crabgrass Preventer

**Lawn Food**  
 20-4-4 PLUS  
**Crabgrass Preventer**

- FOR GRASS LAWNS**
1. FEEDS YOUR LAWN
  2. Prevents Crabgrass before it grows
  3. Prevents Annual Bluegrass (Poa Annua)
  4. Prevents Goosegrass, Foxtail, Watergrass



Total Nitrogen	20.0%
Available Nitrogen	8.0%
Water Soluble Nitrogen (derived from Urea)	12.0%
Available Phosphorus (acid derived from Monoam. of Phosph.)	4.0%
Water Soluble Phosph. (derived from Monoam. of Phosph.)	4.0%
Combined Sulfur (expressed as elemental Sulfur)	0.0%
Sulfates & Sulfides	0.75%
Iron (expressed as elemental Iron)	0.0%
Manganese (expressed as elemental Manganese)	0.0%
Sulfates & Sulfides	0.0%
Zinc (expressed as elemental Zinc)	0.0%

**DESCRIPTION**

1. Balanced fertilizer is designed to give lawn a complete feeding of nitrogen, phosphorus and potash. Iron has been added to correct a deficiency common in Western soils.
2. Contains crabgrass seed inhibitor (see above), goosegrass, romney grass, watergrass, yellow and green foxtail by killing their seeds as they germinate.

**WHEN TO USE**

Use Lawn Food Plus Crabgrass Preventer only in spring or fall. For crabgrass apply in spring before crabgrass germinates. For annual bluegrass, apply in late summer or early fall before annual bluegrass germinates. Apply prior to seedling germination since this product will not control established weeds.

**DIRECTIONS FOR USE**

- May be used for both warm season grasses such as Bermudagrass, St. Augustine, Zoysiagrass, Centipedegrass and Seashore Paspalum and cool season grasses such as Perennial Ryegrass, Perennial Poa, and Fescue.
1. Spread the contents of the bag evenly over your lawn. The settings listed below are for the half rate. Use the same rate of application to ensure complete coverage.
  2. Lawn must be mowed for application. Keep children and pets off treated area until material is washed off soil surface and the blades are dry.
  3. Warm Season Grasses: Apply in late Winter or early Spring prior to crabgrass germination. A second application may be made four to six weeks later. In areas where annual weed grasses continue to germinate into early fall, for control of annual bluegrass (see below) apply in late Summer or early Fall.
  4. Warm Season Grasses: Apply in late Summer or early Fall. For control of annual bluegrass, germinate Bermudagrass, St. Augustinegrass, Zoysiagrass, Centipedegrass and Seashore Paspalum. At the setting listed below the contents of the bag will treat 5,000 sq. ft.
  5. Cool Season Grasses: Apply in early Spring prior to crabgrass germination. For control of annual bluegrass (see above), apply in late Summer or early Fall, or in the early Spring prior to cool season germination. Cool Season grasses include Perennial Ryegrass, Perennial Poa, and Fescue. For cool season grasses the contents of the bag will treat 7,500 sq. ft.
  6. Grass seed may be sown 12 to 18 weeks after application. When sowing a new lawn, further applications of this product should be delayed until the lawn is well established.
- AUTOMATIC:** Do not use on Bermuda Lawns. Do not apply in the Spring to areas cleared the previous Fall. Do not apply to putting greens. Do not apply to newly sprigged areas of Bermuda, St. Augustine or Centipede grasses.
- Suggested Spreader Settings** - 1 lb. per 200 sq. ft.
- | SPREADER         | Rate from bag         | SETTING |
|------------------|-----------------------|---------|
| Euro 800 Deluxe  | 1 lb. per 200 sq. ft. | 3       |
| Johnson Spreader | 1 lb. per 200 sq. ft. | 3       |
| Lawn Beauty      | 1 lb. per 200 sq. ft. | 3       |
| Scout Spreader   | 1 lb. per 200 sq. ft. | 3       |
| Scout Spreader   | 1 lb. per 200 sq. ft. | 3       |
- Settings for spreaders in use elsewhere. After use spreader will vary and should be checked for accuracy.

**CAUTION:** Keep out of reach of children. Use only in accordance with label directions. May be fatal if swallowed or inhaled. If swallowed, induce vomiting. Call physician immediately. Avoid contact with skin, eyes and clothing. Keep pets and children off treated areas until material has been washed into soil and lawn is dry. In case of contact with skin or eyes, flush with plenty of water. For eyes get medical attention. Wash hands with soap and water after handling and before eating or drinking. Wash clothing. Do not apply when weather conditions favor drift from treated areas. Do not apply directly on vegetables, fruits or crops. Do not reuse container. Dispose of empty container as directed.

This product is toxic to wildlife. Birds feeding on treated areas may be killed. This product is toxic to fish.

**KEEP OUT OF ANY BODY OF WATER. DO NOT USE WHERE RUNOFF WILL CONTAMINATE STREAMS, LAKES, PONDS, IRRIGATION OR DOMESTIC WATER.** Dispose of empty container or any spillage promptly—burn or bury. Do not contaminate water by cleaning of equipment or disposal of waste.

**NON-WARRANTY:** Seller makes no warranty, express or implied, concerning the use of this product other than indicated on the label. Buyer assumes all risk of use and/or handling of this material when such use and/or handling is contrary to label instructions. Because the time, place, rate of application and other conditions are beyond seller's control, seller's liability for the handling and use of this product is limited to replacement of product or refund of purchase price. Return unused portions of bag to your BEST dealer for refund if not satisfied with results.

**EXXY** Product of U.S.A.  
**OCCIDENTAL CHEMICAL COMPANY**  
 A DIVISION OF OCCIDENTAL PETROLEUM CO. INCORPORATED  
 P. O. BOX 100  
 LATHROP, CALIFORNIA 95008  
 PRODUCT CODE 80088



**Crabgrass Preventer**  
 20-4-4  
**Lawn Food**  
 PLUS  
**Crabgrass Preventer**

# Lawn Food

20-4-4 PLUS

# Crabgrass Preventer

**Lawn Food**  
 20-4-4  
 PLUS  
**Crabgrass Preventer**

- FOR GRASS LAWNS**
1. FEEDS YOUR LAWN
  2. Prevents Crabgrass before it grows
  3. Prevents Annual Bluegrass (Poa Annua)
  4. Prevents Goosegrass, Foxtail, Watergrass

SATISFACTION  
 GUARANTEED  
 OR  
 YOUR MONEY  
 REFUNDED

