

CONTENTS WILL TREAT 1,000 SQ. FT. OF DICHONDRA OR 1,400 SQ. FT. OF ORNAMENTALS.

DIRECTIONS FOR USE

ESTABLISHED DICHONDRA LAWNS: Apply BEFORE crabgrass or other annual grasses germinate in the Spring. Annual Bluegrass (Poa annua) and other grasses are usually controlled with only one application. Allow up to four weeks for control.

Bermuda grass requires two applications: in the Fall for most effective results; again in the Spring when new growth first appears. The Bermuda grass will be sufficiently weakened, allowing the dichondra to take over or be re-seeded.

NEW DICHONDRA LAWNS: Prepare lawn for seeding in either Fall or Spring. Apply Germain's Dichondra & Ornamental Weed Control; rake the soil one-half inch deep for a seedbed before planting Dichondra seed. It will not harm germinating Dichondra seed.

APPLICATION: Use a Germain's lawn sprayer or similar hose-end sprayer for ease of application. For large areas, place the entire contents of this can in sprayer jar and fill with water. Stir or shake well making sure material is thoroughly mixed and apply evenly to 1,000 square feet only (20 feet x 50 feet), water in well.

SMALL AREAS: Mix 4 level tablespoonfuls in sprayer jar and bring water to one gallon mark and apply to 100 square feet (10 feet x 10 feet). For sprinkling can or tank sprayer, use same dilution as above except mix in one gallon of water.

ORNAMENTALS: For use on most evergreens, shrubs, and trees including Azaleas, Juniper, Camellias, Maple, Pine, Rose, Rhododendron and Yew. Apply in Fall or Spring before weeds germinate. Place 2½ level tablespoonfuls in one gallon of water and apply to 100 square feet. Water area before and after application. Use on established plants only. NOTE: This product will not control weeds once they have germinated. Before application, cultivate all weed growth into soil.

GROUND COVERS: Ice plants, certain annual and perennial flowers such as Snapdragons, Chrysanthemums, Petunias, Phlox and Zinnias. Apply in Fall or early Spring before weeds germinate. Place 2½ tablespoonfuls in one gallon of water to 100 square feet (10 feet x 10 feet). NOTE: Do not apply to unrooted cuttings. Apply to established plantings only. Water immediately after application.



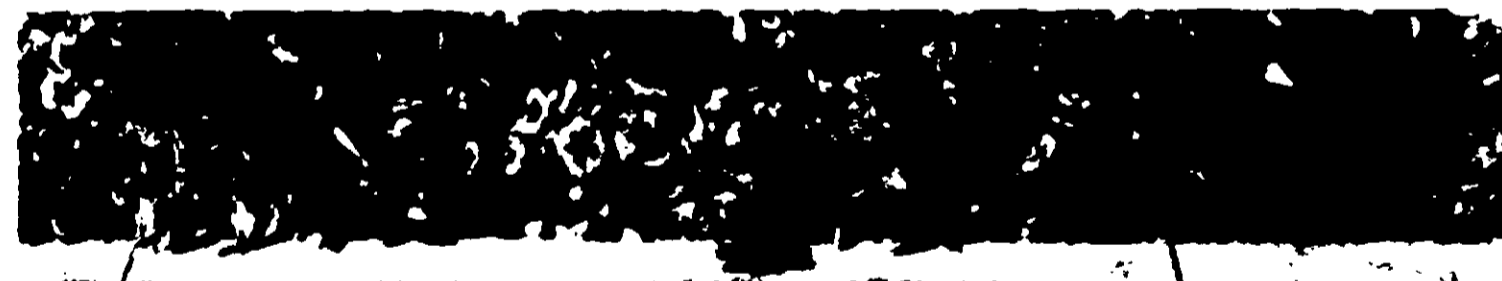
Dichondra & Ornamental Weed Control

For control of Bermuda Grass, Annual Bluegrass (Poa Annua), Crabgrass and Certain Other Weeds and Grasses in Dichondra Lawns, Certain Ground Covers and Ornamental Plantings.



BEFORE

AFTER



ENIDE*

WARNING: KEEP OUT OF REACH OF CHILDREN.
SEE RIGHT SIDE PANEL FOR ADDITIONAL WARNINGS.

NET WT. 7 OZ.

GERMAIN'S DICHONDRA & ORNAMENTAL WEED CONTROL

Read Entire Label Before Using.

Germain's Dichondra Weed Control is an effective herbicide for the control of the following grasses and weeds.

ACCEPTED

11-17-69

6993-34

ANNUAL GRASSES

- | | |
|------------------------------|------------|
| Annual Bluegrass (Poa annua) | Cheat |
| Barnyard Grass | Crabgrass |
| Bermuda Grass | Foxtail |
| Bluegrass | Goosegrass |
| | Stinkgrass |

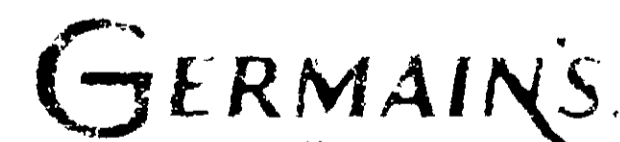
ANNUAL BROADLEAF WEEDS

- | | |
|--------------------|--------------|
| Chickweed (Common) | Lambsquarter |
| Carpetweed | Pigweed |
| Florida Pusley | Purslane |
| Knotweed | Red Sorrel |
| | Smartweed |

WARNING: Harmful if swallowed. Induce vomiting and call physician immediately. If spilled on hands or other skin areas, wash immediately with soap and water. In case of eye contact, wash with water for fifteen minutes and call physician. Avoid inhalation of dust and spray mist. Do not contaminate feed and foodstuffs.

CAUTION: DO NOT USE ON TURF GRASS LAWNS, SUCH AS BENTGRASS, BLUEGRASS, OR DESIRABLE BERMUDA GRASS LAWNS. DO NOT MIX WITH OTHER PESTICIDES. This package contains full net weight. Head space is provided to avoid spilling and for accurate withdrawal.

GERMAIN'S, INC. and Seller make no warranty, express or implied, as to merchantability, fitness for a particular purpose, or otherwise concerning the use of this product other than as indicated on the label. Germain's, Inc. and Seller shall not be liable for any injury, damage or loss resulting from the handling, storing or use of this product not in strict accordance with the directions given hereon.



Since 1871

Los Angeles, Calif. 90058

Product of U.S.A. • Mfg. in U.S.A. © 1969 by Germain's, Inc.
Stock No. 10-000-01 USDA Reg. No. 5994-51

CONTENTS WILL TREAT 1,000 SQ. FT. OF DICHONDRA OR 1,400 SQ. FT. OF ORNAMENTALS.

DIRECTIONS FOR USE

ESTABLISHED DICHONDRA LAWNS: Apply **BEFORE** crabgrass or other annual grasses germinate in the Spring. Annual Bluegrass (*Poa annua*) and other grasses are usually controlled with only one application. Allow up to four weeks for control.

Bermuda grass requires two applications: in the Fall for most effective results, again in the Spring when new growth first appears. The Bermuda grass will be sufficiently weakened, allowing the dichondra to take over or be reseeded.

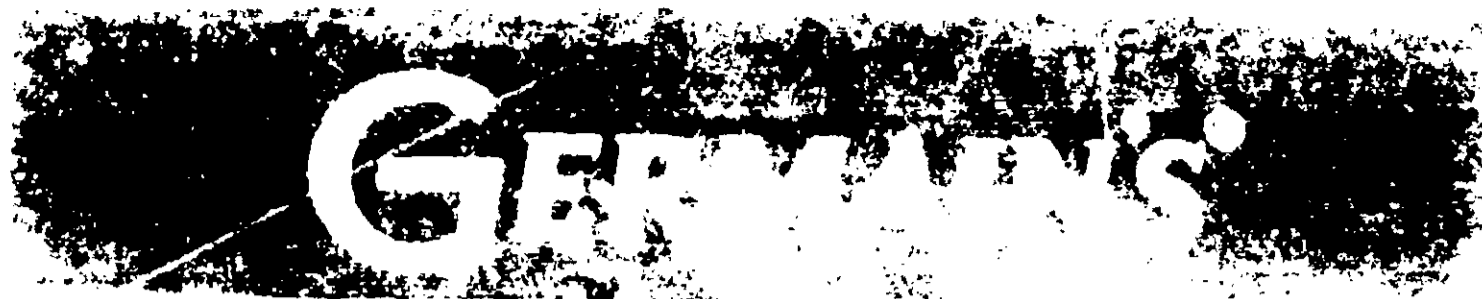
NEW DICHONDRA LAWNS: Prepare lawn for seeding in either Fall or Spring. Apply Germain's Dichondra & Ornamental Weed Control; rake the soil one-half inch deep for a seedbed before planting Dichondra seed. It will not harm germinating Dichondra seed.

APPLICATION: Use a Germain's lawn sprayer or similar hose end sprayer for ease of application. For large areas, place the entire contents of this can in sprayer jar and fill with water. Stir or shake well making sure material is thoroughly mixed and apply evenly to 1,000 square feet only (20 feet x 50 feet), water in well.

SMALL AREAS: Mix 4 level tablespoonfuls in sprayer jar and bring water to one gallon mark and apply to 100 square feet (10 feet x 10 feet). For sprinkling can or tank sprayer, use same dilution as above except mix in one gallon of water.

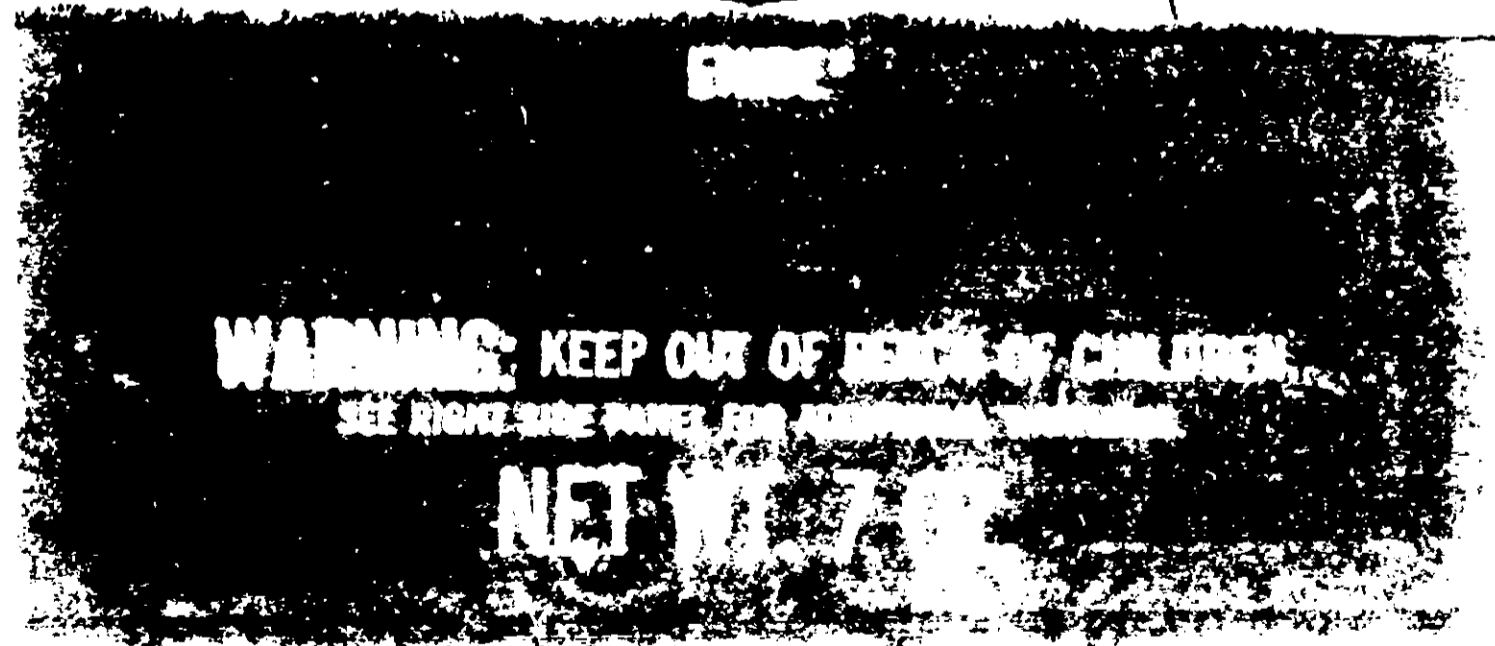
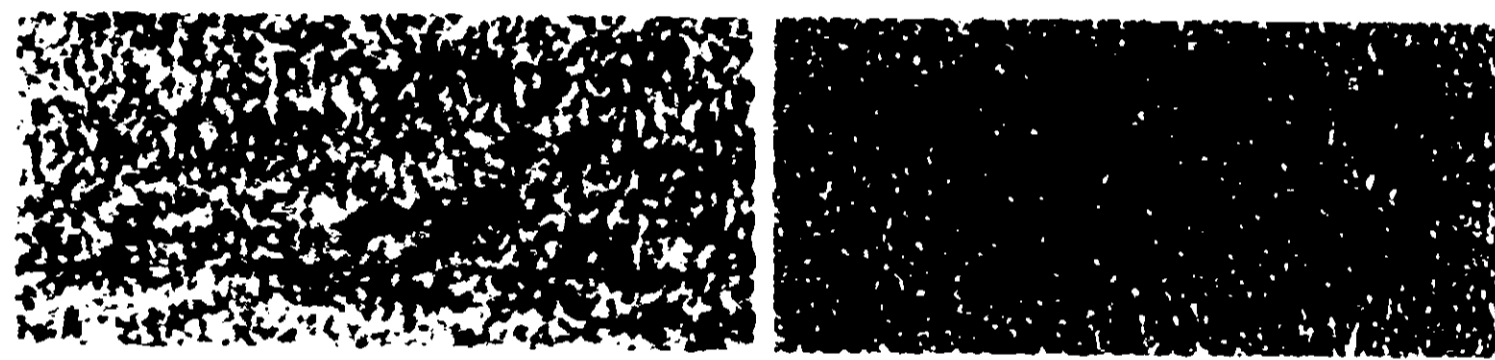
ORNAMENTALS: For use on most evergreens, shrubs, and trees including Azaleas, Juniper, Camellias, Maple, Pine, Rose, Rhododendron and Yew. Apply in Fall or Spring before weeds germinate. Place 2 1/2 level tablespoonfuls in one gallon of water and apply to 100 square feet. Water area before and after application. Use on established plants only. **NOTE:** This product will not control weeds once they have germinated. Before application cultivate all weed growth into soil.

GROUND COVERS: Use plants, certain annual and perennial flowers such as Snapdragons, Chrysanthemums, Petunias, Phlox and Zinnias. Apply in Fall or early Spring before weeds germinate. Place 2 1/2 level tablespoonfuls in one gallon of water to 100 square feet (10 feet x 10 feet). **NOTE:** Do not apply to unrooted cuttings. Apply to established plantings only. Water immediately after application.



Dichondra & Ornamental Weed Control

For control of Bermuda Grass, Annual Bluegrass (*Poa Annua*), Crabgrass and Certain Other Weeds and Grasses in Dichondra Lawns, Certain Ground Covers and Ornamental Plantings.



GERMAIN'S, INC. 11-11-71
 11-11-71
 11-11-71

Read Entire Label Before Using.

Germain's Dichondra Weed Control is an effective herbicide for the control of the following grasses and weeds:

ANNUAL GRASSES

- | | |
|------------------|------------|
| Annual Bluegrass | Cheat |
| Poa annua | Crabgrass |
| Barnyard Grass | Foxtail |
| Bermuda Grass | Goosegrass |
| Bluegrass | Stinkgrass |

ANNUAL BROADLEAF WEEDS

- | | |
|----------------|--------------|
| Chickweed | Lambsquarter |
| (Common) | Pigweed |
| Carpetweed | Purplane |
| Florida Pusley | Red Sorrel |
| Knotweed | Smartweed |

Harmful if swallowed. Induce vomiting and call physician immediately. If spilled on hands or other skin areas, wash immediately with soap and water. In case of eye contact, wash with water for fifteen minutes and call physician. Avoid inhalation of dust and spray mist. Do not contaminate feed and foodstuffs.

DO NOT USE ON TURF GRASS LAWNS, SUCH AS BENTGRASS, BLUEGRASS, OR DESIRABLE BERMUDA GRASS LAWNS. DO NOT MIX WITH OTHER PESTICIDES. This package contains full net weight. Head space is provided to avoid steam and for accurate withdrawal.

GERMAIN'S, INC. and Seller make no warranty, express or implied, as to merchantability, fitness for a particular purpose, or otherwise concerning the use of this product other than as indicated on the label. Germain's, Inc. and Seller shall not be liable for any injury, damage or loss resulting from the handling, storing or use of this product not in strict accordance with the directions given hereon.

CONTENTS WILL TREAT 1,000 SQ. FT. OF DICHONDRA OR 1,400 SQ. FT. OF ORNAMENTALS.

DIRECTIONS FOR USE

ESTABLISHED DICHONDRA LAWNS: Apply BEFORE crabgrass or other annual grasses germinate in the Spring. Annual Bluegrass (Poa annua) and other grasses are usually controlled with only one application. Allow up to four weeks for control.

Bermuda grass requires two applications: in the Fall for most effective results; again in the Spring when new growth first appears. The Bermuda grass will be sufficiently weakened, allowing the dichondra to take over or be re-seeded.

NEW DICHONDRA LAWNS: Prepare lawn for seeding in either Fall or Spring. Apply Germain's Dichondra & Ornamental Weed Control; rake the soil one-half inch deep for a seedbed before planting Dichondra seed. It will not harm germinating Dichondra seed.

APPLICATION: Use a Germain's lawn sprayer or similar hose-end sprayer for ease of application. For large areas, place the entire contents of this can in sprayer jar and fill with water. Stir or shake well making sure material is thoroughly mixed and apply evenly to 1,000 square feet only (20 feet x 50 feet), water in well.

SMALL AREAS: Mix 4 level tablespoonfuls in sprayer jar and bring water to one gallon mark and apply to 100 square feet (10 feet x 10 feet). For sprinkling can or tank sprayer, use same dilution as above except mix in one gallon of water.

ORNAMENTALS: For use on most evergreens, shrubs, and trees including Azaleas, Juniper, Camellias, Maple, Pine, Rose, Rhododendron and Yew. Apply in Fall or Spring before weeds germinate. Place 2 1/2 level tablespoonfuls in one gallon of water and apply to 100 square feet. Water area before and after application. Use on established plants only. NOTE: This product will not control weeds once they have germinated. Before application, cultivate all weed growth into soil.

GROUND COVERS: Ice plants, certain annual and perennial flowers such as Snapdragons, Chrysanthemums, Petunias, Phlox and Zinnias. Apply in Fall or early Spring before weeds germinate. Place 2 1/2 tablespoonfuls in one gallon of water to 100 square feet (10 feet x 10 feet). NOTE: Do not apply to unrooted cuttings. Apply to established plantings only. Water immediately after application.

GERMAIN'S

Dichondra & Ornamental Weed Control

For control of Bermuda Grass, Annual Bluegrass (Poa Annua), Crabgrass and Certain Other Weeds and Grasses in Dichondra Lawns, Certain Ground Covers and Ornamental Plantings.

ACCEPTED

11-17-69

UNDER THE FEDERAL INSECTICIDE AND FUNGICIDE ACT OF 1947, AS AMENDED, AND REGISTERED UNDER NO. 6993-54

GERMAIN'S DICHONDRA & ORNAMENTAL WEED CONTROL

Read Entire Label Before Using.

Germain's Dichondra Weed Control is an effective herbicide for the control of the following grasses and weeds:

- | | |
|-------------------------------|--------------|
| ANNUAL GRASSES | |
| Annual Bluegrass (Poa annua) | Cheat |
| Barley Grass | Crabgrass |
| Bermuda Grass | Foxtail |
| Bluegrass | Goosegrass |
| | Stinkgrass |
| ANNUAL BROADLEAF WEEDS | |
| Chickweed (Common) | Lambsquarter |
| Carpetweed | Pigweed |
| Florida Pusley | Purslane |
| Knotweed | Red Sorrel |
| | Smartweed |

WARNING: Harmful if swallowed. Induce vomiting and call physician immediately. If spilled on hands or other skin areas, wash immediately with soap and water. In case of eye contact, wash with water for fifteen minutes and call physician. Avoid inhalation of dust and spray mist. Do not contaminate feed and foodstuffs.

CAUTION: DO NOT USE ON TURF GRASS LAWNS, SUCH AS BENTGRASS, BLUEGRASS, OR DESIRABLE BERMUDA GRASS LAWNS. DO NOT MIX WITH OTHER PESTICIDES. This package contains full net weight. Head space is provided to avoid spilling and for accurate withdrawal.

GERMAIN'S, INC. and Seller make no warranty, express or implied, as to merchantability, fitness for a particular purpose, or otherwise concerning the use of this product other than as indicated on the label. Germain's, Inc. and Seller shall not be liable for any injury, damage or loss resulting from the handling, storing or use of this product not in strict accordance with the directions given hereon.

GERMAIN'S, inc.
Since 1871

Los Angeles, Calif. 90058

Product of U.S.A. • Litho in U.S.A. © 1969 by Germain's, Inc.
Stock No. 20-900 67 USDA Reg. No. 6993-34



BEFORE

AFTER



BEFORE

WARNING: KEEP OUT OF REACH OF CHILDREN
SEE RIGHT SIDE PANEL FOR ADDITIONAL WARNINGS

NET WT. 7 OZ.