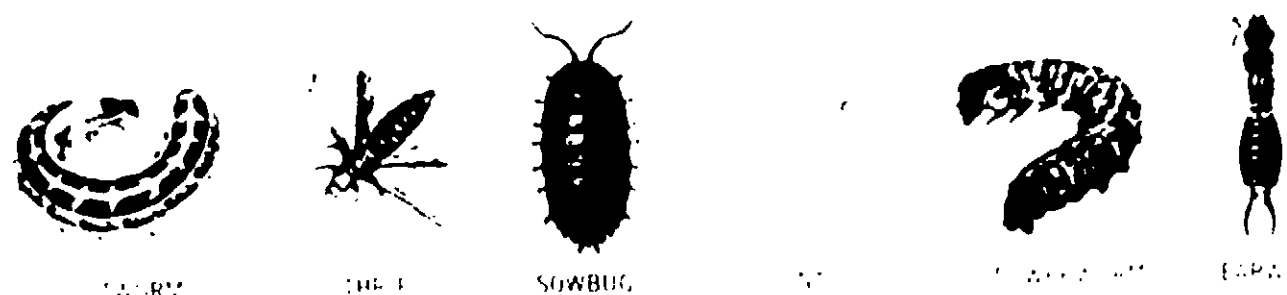


10%  
Chlordane  
Dust

Kills Ants, Earwigs, Beetle Grubs, Armyworms, Cutworms,  
Lawn Moths (Sod Webworms) and other similar pests.



ACTIVE INGREDIENT	BY WT
*Chlordane 10% (10.00%)	10.00%
INERT INGREDIENTS	90.00%
TOTAL	100.00%

\*Equivalent to 5% Deltamethrin 4:7 Methyltetrahydrochloride and 4% Deltamethrin 1:1:1

**CAUTION:** KEEP OUT OF REACH OF CHILDREN.  
SEE BACK PANEL FOR ADDITIONAL CAUTIONS

NET WT. 1 LB.

HOUSEHOLD

**ANTS OUTSIDE USE:** Dust along runways, in cracks, in cement walks and patios, around garbage containers, under porches, and under building foundations. Dust on soil around base of ornamentals. Spot treat nests in lawns. **NOTE:** Avoid contamination of feed and foodstuffs. Do not use in dwellings or dairy barns.

LAWNS AND TURF

**JAPANESE BEETLE GRUBS, WHITE GRUBS, CHAFER BEETLE GRUBS:** Apply 1 pound to 700 sq. ft. Water thoroughly after application. **LAWN MOTHS (SOD WEBWORMS), CUTWORMS, ARMYWORMS, CRICKETS, MOLE CRICKETS, EAR WIGS:** Apply 1 pound to 700 sq. ft. Sprinkle lightly after application. **NOTE:** Birds feeding over treated lawn may be harmed.

FLOWERS AND ORNAMENTALS

**ANTS, THRIPS, SOWBUGS, LEAF MINERS, LEAF ROLLERS, CERTAIN CATERPILLARS, LYGUS BUGS AND CERTAIN OTHER GARDEN PESTS:** Dust upper and lower leaf surfaces in early morning or evening when air is still. Repeat as necessary. **ARMYWORMS, CRICKETS, MOLE CRICKETS:** Apply 1 pound per 700 sq. ft. Apply to soil around base of plants and along rows. **EARWIGS:** Use same amount applying to soil around base of plants and along rows; in damp shady areas, around and under rocks, boards and similar places. **JAPANESE BEETLE GRUBS:** Apply 1 pound per 250 sq. ft. Work into top 4 inches of soil around base of plants. Repeat as necessary. See Caution.

**CAUTION:** Avoid inhalation. Avoid skin contact with solution. In case of contact with skin, wash with soap and water. Wash hands after use. Avoid contamination of feed and foodstuffs. Keep out of reach of children. Keep children and pets off treated lawns until dust is washed off, and the treated lawn has dried completely. Do not contaminate drinking water. Use near fish ponds. Do not apply on plants in bloom, as chlordane is toxic to pollinating insects. Do not apply to any food or feed crop. Do not contaminate ornamental fish ponds. Dispose of container promptly when empty.

Do not reuse empty container. Destroy it by burying with waste or burning. Stay away from smoke or flames.

This product is toxic to fish and wildlife. Birds feeding on treated areas may be killed. Keep out of any body of water. Do not apply where runoff is likely to occur. Apply this product only as specified on this label. Do not contaminate water by cleaning of equipment or disposal of wastes.

This product contains full net weight. Head space is provided to avoid spraying and for accurate withdrawal.

**GERMAIN'S INC.,** and Seller make no warranty, express or implied, as to merchantability, fitness for a particular purpose, or otherwise, concerning the use of this product other than as indicated on the label. Germain's, Inc., and Seller shall not be liable for any injury, damage or loss resulting from the handling, storing or use of this product not in strict accordance with the directions given hereon.

**GERMAIN'S, inc.**  
Since 1871

Los Angeles, Calif. 90058

REGISTERED PATENT OFFICE  
U.S. PAT. NO. 2,811,111