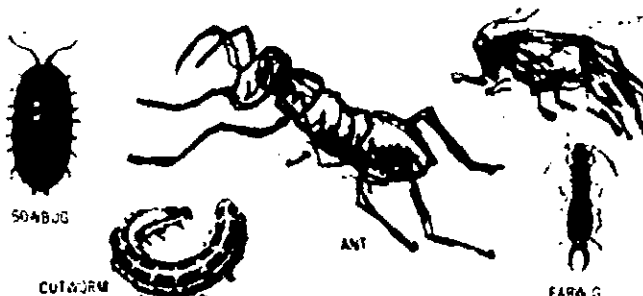


GERMAIN'S

Ant and Crawling Insect Control

Granular Diazinon kills Ants, Cutworms,
Bermuda Mites, Earwigs, Crickets, Fleas,
Sowbugs and certain other insects.



*Active Ingredient	
O, O-Diethyl O-(2-isopropyl-6-methyl-4-pyrimidinyl)	
phosphorothioate	2.00%
Inert Ingredients	98.00%
TOTAL	100.00%

*Diazinon Insecticide trademark of CIBA-GEIGY

KEEP OUT OF REACH OF CHILDREN

CAUTION

STATEMENT OF PRACTICAL TREATMENT

If swallowed, drink one or two glasses of water and induce vomiting by touching the back of the throat with finger. Repeat until vomit fluid is clear. Call a physician immediately. Do not induce vomiting or give anything by mouth to an unconscious person. If inhaled remove victim to fresh air. Apply respiration if indicated. If on skin remove contaminated clothing and wash affected area with soap and water. If in eyes flush eyes for at least 15 minutes with water. Call a physician if irritation persists.

NOTE TO PHYSICIAN: If symptoms of cholinergic poisoning occurs, administer atropine therapeutically.
SEE RIGHT SIDE PANEL FOR ADDITIONAL PRECAUTIONARY STATEMENTS

SPOT TREATMENT ANTS: Apply one tablespoon of granules over and around each individual ant hill.

DIGGER WASPS: Apply one tablespoon of granules in and around each individual ground nest opening. Make the application about dusk when the wasps are not active.

BAND TREATMENT AROUND FOUNDATION The following insects are commonly found around or near the foundation of houses as well as in the lawn. Certain of these insects may even enter the house. Ants, Brown dog ticks, Clover mites, Crickets, Earwigs, Fleas, Millipedes, Sowbugs and Springtails (Collembola). For control of the above insects, apply a five-foot band of Germain's Ant and Crawling Insect Control granules next to the foundation of the house. Distribute the granules uniformly using a rate of 8 oz. for each 5' by 20' area to be treated.

DISPOSAL

Do not reuse empty container. Wrap container and put it in trash collection.

Neither Germain's, Inc. nor the Seller MAKES ANY REPRESENTATIONS OR WARRANTIES OF ANY KIND, EXPRESS OR IMPLIED, WITH RESPECT TO THE CONTENTS HEREOF, WHETHER AS TO MERCHANTABILITY, FITNESS FOR A PARTICULAR PURPOSE, OR ANY OTHER MATTER, EXCEPT AS INDICATED ON THIS LABEL. Neither Germain's, Inc. nor the Seller shall be liable for any injury, damage or loss resulting from the handling, storage or use of this product not in strict accordance with the directions given hereon.

GERMAIN'S, Inc.

Sole 1971
Los Angeles, CA 90018



Product of U.S.A.
Made in U.S.A.
1530 E. Germain Ave.
Stock # 62 901 43
EPA Reg. # 333 CA 1
EPA Reg. # 6333 60

PRECAUTIONARY STATEMENT HAZARDS TO HUMANS AND DOMESTIC ANIMALS

CAUTION

Harmful if swallowed. May be absorbed through the skin. Avoid breathing dust. Avoid contact with skin, eyes, and clothing. Avoid contamination of feed and foodstuffs. Wash thoroughly after handling and before smoking or eating. Keep children and pets off treated areas until this material is washed into the soil and grass is dry.

ENVIRONMENTAL HAZARDS

This product is toxic to fish, birds, and other wildlife. Birds feeding on treated areas may be killed. Keep out of lakes, streams, or ponds. Do not contaminate water by cleaning of equipment or disposal of wastes. Apply this product only as specified on this label.

DIRECTIONS FOR USE

It is in violation of Federal Law to use this product in a manner inconsistent with its labeling.

Germain's Ant and Crawling Insect Control is for the following lawn insects on both grass and dichondra lawns: Chinch bugs, Earwigs, Ants, Lawn moths (Sod webworms), Bermuda mites, Crickets, Armyworms, Brown dog ticks, Chiggers, Clover mites, Cutworms, Fleas, Leafhoppers, Sowbugs, Millipedes. Scatter at the rate of 1 lb. per 200 sq. ft. (an area 20' by 10'). For heavy lawns such as St. Augustine lawns, application should be increased to 1 lb. per 130 sq. ft. (10' by 13').

Billbugs: White grubs of Japanese beetle, European chafer. Apply at the rate of 1 lb. to 160 sq. ft. (10' by 16'). Water grass thoroughly after application. For billbug control, apply when activity is first observed or when chewed or brown grass indicates damage from these insects. Repeat as necessary.