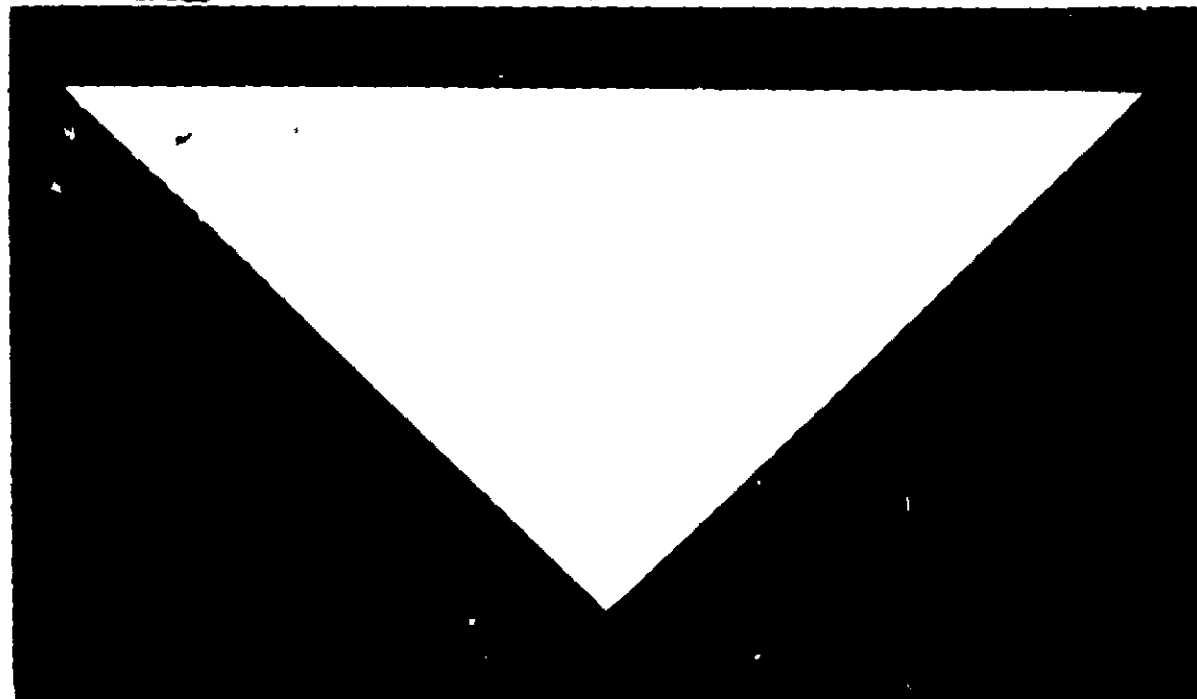
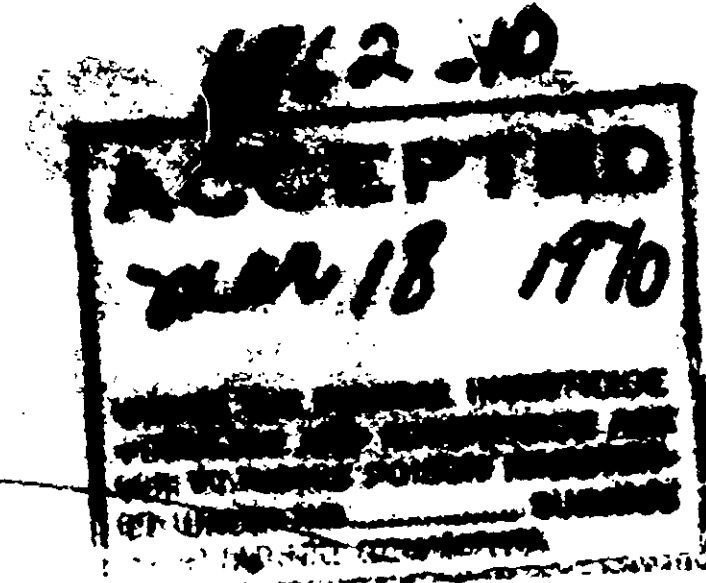


[6962-10]



Mothproofing



**100% ACTIVE INGREDIENTS**

**EFFECTIVE... RELIABLE**

**PLEASANT ODOR**

STRAFE is acceptable as a pesticide for use in all departments of USDA Officially Inspected Food Processing Plants.

Foods should be removed or covered during treatment. All food processing surfaces should be covered during treatment or thoroughly cleaned before using. When using the product as a space spray in these areas, apply only when plant is not in operation.

The important point to keep in mind is that a definite amount of STRAFE, uniformly distributed per unit of space, is necessary in order to perform an efficient job.

**ACTIVE INGREDIENTS** 100%  
Permethrin (20% Ester), N-Ortho-Butyl-1,3-Dichlorobenzene, Dicarboximide, Tetrahydro-2H-Pyridin-2(1H)-one, Pyrethrin and Essential Oils of Citronella, Eucalyptus, and Peppermint.

EPA REG. NO. 1962-10

**net contents      gallons**

© 1963    Made and Printed in U.S.A.    B-10-9

**DESCRIPTION**

Synergized pyrethrum products of this type may be used around humans and pets, but not on them.

STRAFE is an effective, fastacting insecticide for the control of roaches and many other injurious and annoying insects found in institutions and commercial buildings. It is highly useful for insect control in hospitals, hotels, restaurants, food stores, food processing plants, dairies, breweries, distilleries, grain mills and livestock barns.

**RECOMMENDED DOSAGE FOR SPACE SPRAYING.** Vaporizer, misting types of equipment which will produce a finely atomized spray that approaches the particle size range of aerosols are recommended for this kind of application.

For effective control of accessible, exposed stages of common insect pests, such as flies, mosquitoes, gnats, boxelder bugs, wasps, hornets and many other flying insects, direct the spray toward the upper portions of the area, using 1 oz. to each 2,000 cubic feet. Keep doors and other openings closed for 10 minutes after spraying. Do not spray more than 1 gal. in 40,000 cubic feet of enclosed space in order to avoid any fire hazard.

**CRAWLING INSECTS:** To control Roaches, Silverfish, Crickets, Spiders, Ants, Scorpions and Clover Mites, spray infested areas thoroughly and direct the mist behind baseboards, moldings, cabinets, shelves, sinks, door and window frames, and pipes; toward drains and dark corners, and into cracks, recesses, crevices and similar hiding places. Use 1 oz. per 500-750 cubic feet. Repeat treatment as necessary.

**FLEAS, TICKS, BEDBUGS, CLOTHES MOTHS & CARPET BEETLES:** If the premises are affected, initially, thoroughly spray floors, cracks and edges of the infested rooms and areas. Then, thoroughly spray infested textile articles such as upholstered furniture, mattresses, drapes, carpets, padding, clothes, etc., on all sides; pay particular attention to seams, tufts, folds and pleats. Closets, wardrobes, baseboards, springs, pantries, furniture, etc., must be sprayed thoroughly in every crack and crevice—back and front. Infested animal bedding should always be removed and destroyed.

**CONTROL STORED FOOD PRODUCTS INSECTS.** STRAFE kills on contact the exposed or accessible stages of Rice Weevil, Granary Weevil, C. Banded Flour Beetle, Rust Red Flour Beetle, Cadelle, Saw Toothed Grain Beetle, Spider Beetle, Angoumois Grain Moth, Mediterranean Flour Moth, Meal Worms, Cigarette Beetle, Drug Store Beetle and Grain Mites.

Spray floors, walls and partitions in flour and feed mills, elevators, empty grain and feed bins, box cars, food warehouses and processing plants with sufficient material to wet surfaces. Pay particular attention to cracks and corners where insects may be harbored. Accumulations of waste grain and dirt should be removed before treatment.

Use STRAFE at the rate of 1 gal. per 500-750 square feet of surface to be treated. Also spray sacked grain, and direct a light spray to hit all exposed ends, sides and tops of stored bags. Spray unloading, handling and processing areas, and apply STRAFE to conveying, processing and handling equipment such as the insides of reel conveyors, purifier conveyors, sifters, roll housings and hoppers, pick-up conveyors, etc.

Spray thoroughly around the base of heavy machinery and equipment. Repeat treatments as required to prevent infestations.

**CAUTION: COMBUSTIBLE. CONTAINS PETROLEUM DISTILLATE. HARMFUL IF SWALLOWED. KEEP OUT OF REACH OF CHILDREN.** Vacate area prior to treatment. Ventilate area after treatment is completed. Do not induce vomiting if swallowed. Call a physician. For skin contact, wash off with soap and water. If eye contact, flush with copious amounts of water. If irritation persists, call a physician. Keep container tightly closed and away from heat or open flame. Do not use in presence of sparks or open flame. Carefully dispose of empty container. Cover or remove fish bowls and house plants before spraying.

**MADISON CHEMICAL • MAYWOOD, ILLINOIS 60153 • NEW YORK • LOS ANGELES**