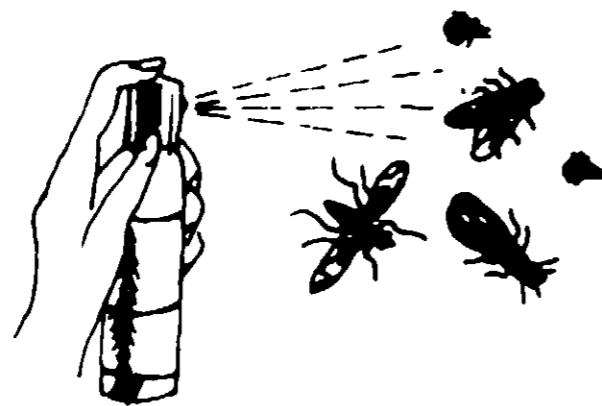
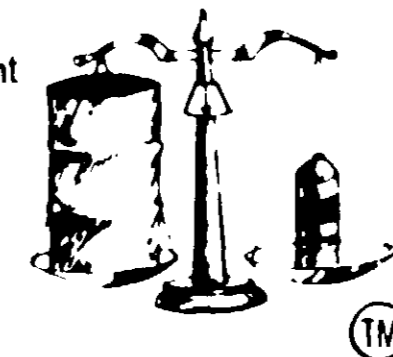


[6959-27]



Equivalent of 17 gals. of oil base spray



compressed into a 2 1/2 lb. Aerosol Spray

**INGREDIENTS**

<b>Active Ingredients:</b>	
Piperonyl Butoxide 1 & 11	700%
** Technical Piperonyl Butoxide	1.000%
Rotenoids and other Cube Resins	0.67
Rotenone	0.33
Refined Petroleum Oil	18.200%
<b>Inert Ingredient:</b>	80.000
**Equivalent to 8-(Butylcarbityl)-(6-Propylpiperonyl)-Ether and 2% of related compounds	

**TECHNICAL DATA-FLY CONTROL**

Dosage required	1 sec. per 1000 cu. ft.
Treatment per unit	1,135,000 cu. ft.
Cost of treatments	Approx. 1.2 cents per 1,000 cu. ft.
Delivery rate @ 70 F	1 gram per sec.
Cylinder	Aluminum
Propellent Gas	High pressure
Coverage	Each 2-1/2 lb. unit will effectively treat approximately the same area as 17 gallons of an oil base spray without the use of over 16 3/4 gallons of petroleum oil.

**CAUTION**

Hold dispenser three feet away from object being sprayed to avoid possible staining.  
 Do not use in edible products areas of food processing plants, restaurants or other areas where food is commercially prepared or processed. Do not use in living areas while food is exposed.  
 This cylinder is not to be refilled. Do not attempt to recharge. When cylinder is exhausted, discard in safe place. Do not attempt to treat humans. Ventilate the area after treatment is complete. Remove pets, plants and cover aquariums before spraying.  
 Apply this product only as specified on this label.

**CESSCO**  
**Professional Type Aerosol**  
**Highly Concentrated**

**CAUTION:**  
**Keep out of reach of children. See inside panel for additional cautions.**

**\$ 7 95**  
 price

A heavy duty, commercial formula insecticide for use in non-food areas of hospitals, restaurants, food plants, supermarkets, motels, hotels

**NET WT. 2 1/2 LBS.**  
**E.P.A. Reg. No. 6959-27**  
**E.P.A. Est. No. 6959-NC-1**

**Directions**

**Flying Insects:** Mosquitoes, Gnats, Wasps, Small Flying Moths, Fruit Flies. Close all windows and doors, and direct fog upward at a rate of 1 to 3 seconds per 1,000 cubic feet. Dispense in all locations. Keep area closed for 15 minutes. Sweep up and dispose of fallen insects. Repeat treatment when necessary.

**Mud Dauber and Wasp Nests:** Spray mist directly on insects and their nests from approximately 2 foot distance. Wasps contacted will fly away from fog. Applications should be made in late evening when insects are at rest.

**Chocolate Moth Carpet Beetles, Drug Store Beetles** in exposed adult and larval stages. Contact as many insects as possible when treating infested areas such as cracks, crevices, packaged store products, machinery, dark secluded areas. Spray 10 to 20 seconds per 100 square feet of floor space. Repeat weekly or as insects appear.

**Fleas In Buildings:** Close windows and doors. Hold aerosol 36" above floor and direct fog toward floor and lower walls at a rate of 10 seconds per 100 square feet, making sure that all floor surfaces are contacted. Also, treat the sleeping quarters of pets. Repeat treatments after 7 days.

**Roaches, Spiders, Waterbugs, Ants, Silverfish, Crickets:** Hold aerosol close to insects and mist directly into them, contacting as many insect places behind boards, sinks, cabinets, coffee makers, meter boxes, manhole covers. Repeat all treatments as necessary.

**Warning**

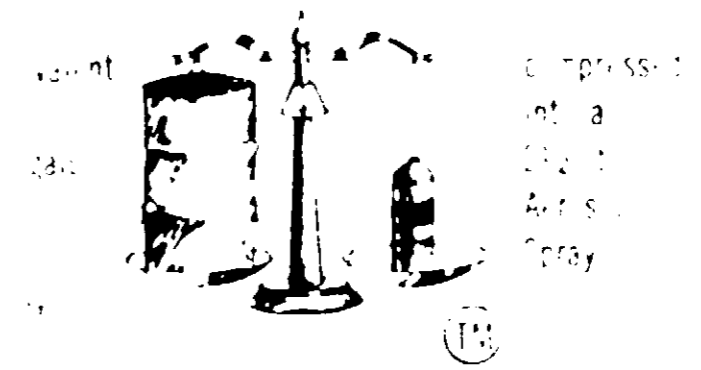
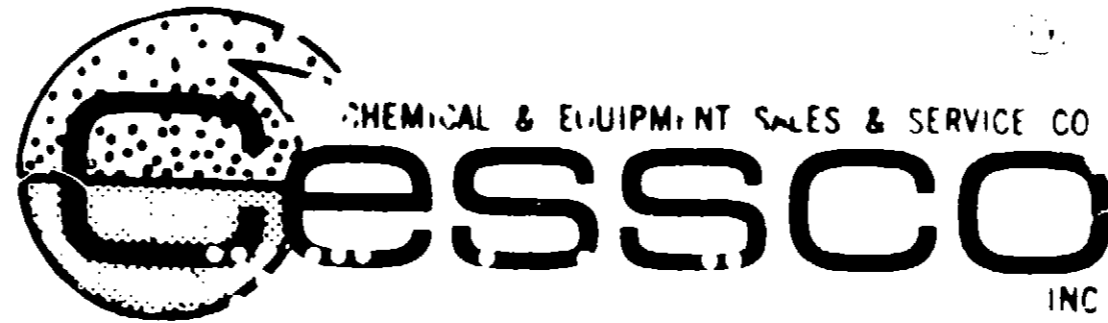
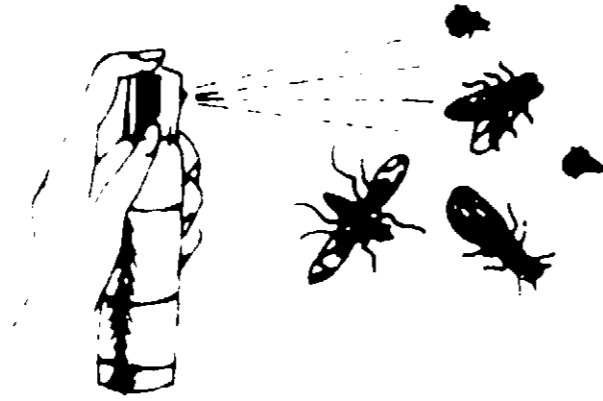
Contents under pressure. Do not puncture. Do not use or store near heat or flame. Exposure to temperatures above 130 F may cause bursting. Never throw container into fire or incinerator.  
 This product is toxic to fish. Keep out of lakes, streams, or ponds. Do not contaminate water by cleaning of equipment and disposal of waste.

**CHEMICAL AND EQUIPMENT SALES AND SERVICE CO. - CHARLOTTE, N.C.**

P.O. Box 12452 / Charlotte, N.C. 28205

A  
 JUN 18 1975

[6959-27]



**ACTIVE INGREDIENTS**

Active ingredients: 1,1,1-Trichloro-2,2,2-trifluoroethane (100%)

**INERT INGREDIENTS**

Inert ingredients: 0%

**TECHNICAL DATA**

Flash point: 100°F

Boiling point: 100°F

Freezing point: -100°F

Specific gravity: 1.4

Vapor pressure: 100 psi

Evaporation rate: 100%

Water solubility: 0%

Acidity: 0

Alkalinity: 0

Stability: Stable

Compatibility: Compatible with most insecticides

Corrosivity: Non-corrosive

Flammability: Non-flammable

Toxicity: LD50 1000 mg/kg

Environmental fate: Biodegradable

Environmental toxicity: No harm to fish, birds, or mammals

First aid: Wash with water

Precautions: Avoid contact with skin and eyes

Storage: Store in a cool, dry place

Disposal: Dispose of in accordance with local regulations

**CESSCO**  
Professional Type  
Highly Concentrated

**CAUTION:**  
Keep out of reach of children. See inside panel for additional cautions.

**\$ 7 95**  
price

NET WT 2 LBS  
E.P.A. Reg No 6959 27  
E.P.A. Est No 6959 N

**Directions:**

1. Shake well before use.

2. Spray thoroughly on all surfaces.

3. Repeat every 7-10 days.

**Use on:**

- 1. Fleas
- 2. Mosquitoes
- 3. Beetles
- 4. Spiders
- 5. Ticks
- 6. Lice
- 7. Flies
- 8. Ants
- 9. Crickets
- 10. Silverfish
- 11. Waterbugs
- 12. Cockroaches
- 13. Fleas
- 14. Mosquitoes
- 15. Beetles
- 16. Spiders
- 17. Ticks
- 18. Lice
- 19. Flies
- 20. Ants
- 21. Crickets
- 22. Silverfish
- 23. Waterbugs
- 24. Cockroaches

**CHEMICAL AND EQUIPMENT SALES AND SERVICE CO. - CHARLOTTE, N.C.**  
P.O. Box 12452 / Charlotte, N.C. 28205