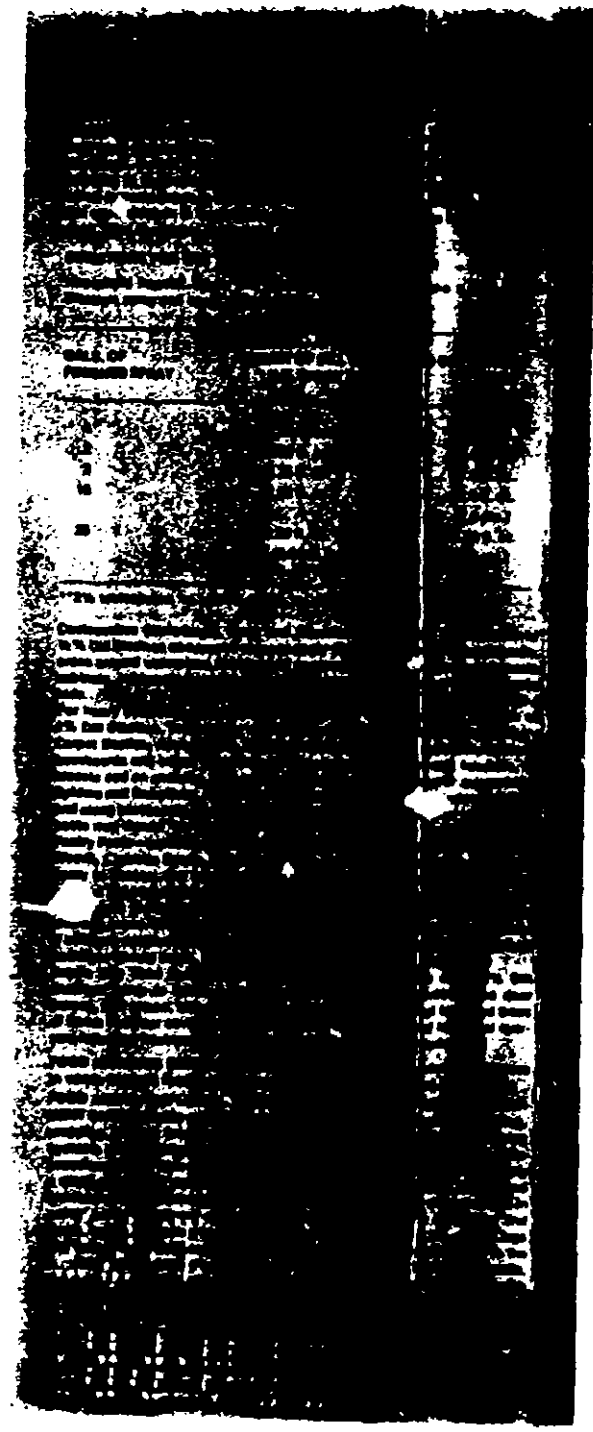


PM 15  
6900-148



# J. J. DILL COMPANY

ACCEPTED  
JUN 9 1977

## DILL DIAZINON® EMS INSECTICIDE

FOR USE BY PEST CONTROL OPERATORS ONLY  
For control of cockroaches, certain other household pests  
and turf and ornamental pests

1891

Conforms to the Federal Insecticide, Fungicide, and Rodenticide Act  
EPA Reg. No. 6900-148

|  |         |
|--|---------|
| 0,0-Dimethyl 0-(2-isopropyl 6-methyl 4-borimidinyl) phosphorothioate | 47.33%  |
| Aromatic petroleum derivative solvent                                | 29.94%  |
| INERT INGREDIENTS  | 22.73%  |
| TOTAL  | 100.00% |

DILL DIAZINON CONTAINS 4 LBS. DIAZINON PER GALLON  
DIAZINON REGISTERED TRADEMARK OF CIBA GEIGY CORPORATION

### WARNING

Keep out of reach of children

May be fatal if swallowed. May be absorbed through skin. Do not breathe spray mist. Do not get in eyes, on skin or on clothing. Wash thoroughly after handling. Avoid contamination of food and feed. Keep out of reach of domestic animals. Do not use on humans, household pets, or livestock. Do not permit children or pets to go onto the sprayed grass until spray has completely dried.

**Fish and Wildlife Caution**  
This product is toxic to fish and wildlife. Birds feeding on treated areas may be killed. Keep out of any body of water. Do not apply where runoff is likely to occur. Do not apply when weather conditions favor drift from areas treated. Do not contaminate water by cleaning of equipment or disposal of wastes. Apply this product only as specified on this label.

This product is highly toxic to bees exposed to direct treatment or residues on crops. Protective information may be obtained from your Cooperative Agricultural Extension Service.

**DO NOT REUSE EMPTY CONTAINER. DESTROY BY PERFORATING OR CRUSHING AND BURYING IN A SAFE PLACE.  
DO NOT USE OR STORE NEAR HEAT OR OPEN FLAME. MINIMUM FLASH POINT 105°F.**

**WARNING: COMBUSTIBLE MIXTURE**  
NOTE: Dill Diazinon is not recommended for use in conduits, meter housings, junction or switch boxes because of shock hazard.

**Ornamental Insects:** To control certain insects on ornamentals: Arbutus, Azalea, Birch, Boxwood, Camellia, Carnation, Chrysanthemum, Douglas Fir, Elm, Gladiolus, Hawthorn, Holly, Juniper, Lilac, Lorust, Maple, Oak, Pine, Plum, Poplar, Rhododendron, Rose, Spruce, and Willow, apply the recommended rates indicated below.

Do not use on certain Ferns, Poinsettia, Hibiscus, Papaya, Pineapple, Gardenia, since injury to the plants may occur.  
**Blattella germanica:** Mix 1/2 fl. oz. (1 tablespoon) in 3 gals. water (or 1 pt. in 170 gal. water) and apply as a thorough fog or spray when adults first appear. Make a second and third application at 4 to 5 week intervals.

#### DISCLAIMER

Seller's guarantee shall be limited to the terms of the label and subject to the buyer assumes any risks to person or property arising out of use or handling and accepts the product on these conditions.

EPA Reg. No. 6900-148  
EPA Est. No. 6900-01-1

MANUFACTURED BY THE J. J. DILL COMPANY  
4 TRAYNE ROAD, RAAMAZOON, MICHIGAN 48869