



OFFICE OF CHEMICAL SAFETY AND POLLUTION PREVENTION

WASHINGTON, D.C. 20460

February 18, 2025

SENT BY EMAIL

Aneta Kozlowska
aneta.kozlowska@arxada.com
ARXADA, LLC

Subject: Labeling Notification per Pesticide Registration Notice (PRN) 98-10 - To update label language, marketing claims and graphics
Product Name: Nugen Low Streak Disinfectant Wipes
Admin Number: 6836-382
EPA Receipt Date: 08/30/2024
Action Case Number: 00627443

Dear Aneta Kozlowska:

The U.S. Environmental Protection Agency is in receipt of your application for notification under Pesticide Registration Notice 98-10 for the above referenced product. The EPA has conducted a review of this request for its applicability under PRN 98-10 and finds that the action requested falls within the scope of PRN 98-10.

The labeling submitted with this application has been stamped "Notification" and will be placed in our records.

Should you wish to add/retain a reference to your company's website on your label, then please be aware that the website becomes labeling under the Federal Insecticide, Fungicide, and Rodenticide Act and is subject to review by the EPA. If the website is false or misleading, the product will be considered to be misbranded and sale or distribution of the product is unlawful under FIFRA section 12(a)(1)(E). 40 CFR § 156.10(a)(5) lists examples of statements the EPA may consider false or misleading. In addition, regardless of whether a website is referenced on your product's label, claims made on the website may not substantially differ from those claims approved through the registration process. Therefore, should the EPA find or if it is brought to our attention that a website contains statements or claims substantially differing from statements or claims made in connection with obtaining a FIFRA section 3 registration, the website will be referred to the EPA's Office of Enforcement and Compliance Assurance.

If you have questions, please contact Emilia Oiguenblik via email at oiguenblik.emilia@epa.gov.

Sincerely,

Luisa C Samalot-Freire, Product Manager -
Team 31
RMB1, AD
Office of Pesticide Programs
U.S. Environmental Protection Agency

Note to Reviewer: [Language in brackets [AAA] is optional or interchangeable]
{Language in braces {AAA} is for informational purposes and will not appear on the final label}

NUGEN® Low Streak Disinfectant Wipes

~~[One-Step⁶] / [Disinfectant⁴] / [Virucide^{*}] / [Sanitizer⁵]~~

~~{Note to reviewer: each scent below may also be represented by a graphic depicting the corresponding scent with the exception of apple which will be submitted to the Agency for review.}~~

~~FRESH / [SUMMER] CITRUS / FLORAL / MINT / PINE / LEMON / WOODY / LIME / MELON / CLEAN /
WATERFALL / [ULTIMATE] ORANGE / [SPARKLING] APPLE / INVIGORATING BREEZE / SPRING GARDEN
/ LAVENDER [FRESH] / GRAPEFRUIT FRAGRANCE / [ULTRA FRESH] SCENT / SCENTED~~

~~Kills Flu Virus^{*,6}~~

Active Ingredients:

Octyl decyl dimethyl ammonium chloride	0.0909%
Diocetyl dimethyl ammonium chloride.....	0.0364%
Didecyl dimethyl ammonium chloride.....	0.0545%
Alkyl (C14, 50%; C12, 40%; C16, 10%) dimethyl benzyl ammonium chloride	0.1212%
Other Ingredients:.....	99.6970%
Total.....	100.0000% ¹

KEEP OUT OF REACH OF CHILDREN

CAUTION [PRECAUCIÓN]

See [left] [side] [right] [back] [bottom] panel for Precautionary Statements and First Aid

Manufactured by:

Arxada, LLC

412 Mount Kemble Avenue, Suite 200S

Morristown, NJ 07960

NOTIFICATION

6836-382

The applicant has certified that no changes, other than those reported to the Agency have been made to the labeling. The Agency acknowledges this notification by letter dated:

02/18/2025

EPA Reg. No. 6836-382

EPA Est. No. (as indicated on container)

Net Contents: (insert #) [premoistened] [towelettes] [wipes] [disinfecting] [antimicrobial] [cleaning] [wet] [multi-purpose] [touch-up] [pre-moistened cloths] [sheets]

Net Contents: [expressed as avoirdupois pounds and ounces] [optional: wipe dimensions:] X x X [inches] [in.]

[Minimum WT.] [Barcode]

[DOT Symbols]

[QR Code]

[Country of origin (insert country)]

[Manufactured in (insert country) [with Domestic and Imported Ingredients]]

{Note to Reviewer: for multi-packs}

[2][3][x][canister] [pack] [[Bonus] Twin pack]



[Do not flush]

NUGEN® Low Streak Disinfectant Wipes

EPA Reg. No. 6836-382

EPA Submission February 22, 2024

PRECAUTIONARY STATEMENTS**HAZARDS TO HUMANS AND DOMESTIC ANIMALS**

Caution. Causes moderate eye irritation. Avoid contact with eyes or clothing. Wash thoroughly with soap and water after handling and before eating, drinking, chewing gum, using tobacco or using the toilet.

FIRST AID

IF IN EYES: Hold eye open and rinse slowly and gently with water for 15-20 minutes. Remove contact lenses, if present, after first 5 minutes, then continue rinsing eye.

Call a poison control center or doctor for treatment advice. Have the product container or label with you when calling poison control center or doctor or going for treatment.

{Optional Emergency contact information}

[For emergency information on [product, usage, etc.], call [1-XXX-XXX-XXXX], Monday through Friday, 9 a.m. to 5 p.m. After 5 p.m. call your poison control center at 1-800-222-1222.]

{Note to reviewer: Pages 3-20 are considered optional marketing language. All designators (i.e. asterisks and numbers) used throughout the label may be interchanged as needed on final printed label.}

{Note to reviewer: The following claims containing "New" may only be used for a period of six months after EPA's approval of a revised or alternate formula, beginning when the product is first sold or distributed.}

- 2 New Wipes
- Introducing [new]
- New [and Improved!]
- New [Convenient] [Amazing] Package
- New easy-glide dispensing top
- New Easy [Start Lid] [Start Package] [Grab Lid]
- New easy to dispense
- New EZ [to start lid] [start package] [Grab Lid]
- New larger [bigger]-sized wipe
- New Larger Size
- New More Scrubbing Power
- [New] [Now] [low-streak] formula
- New Strong wipe for tougher [jobs] [messes]
- New Stronger Wipe for tougher [jobs] [messes]
- New [thick] [textured] wipe
- New Top
- New tougher wipe for tougher cleaning [messes]
- New tougher wipe for [your] tough[er] jobs
- New Wipes

[One-Step⁶] / [Disinfectant⁴] / [Virucide^{*}] / [Sanitizer⁵]

{Note to reviewer: each scent below may also be represented by a graphic depicting the corresponding scent with the exception of apple which will be submitted to the Agency for review.}

FRESH / [SUMMER] CITRUS/ FLORAL/ MINT/ PINE / LEMON / WOODY/ LIME / MELON/ CLEAN / WATERFALL / [ULTIMATE] ORANGE / [SPARKLING] APPLE / INVIGORATING BREEZE / SPRING GARDEN / LAVENDER [FRESH] / GRAPEFRUIT FRAGRANCE / [ULTRA FRESH] SCENT / SCENTED

Kills Flu Virus^{*,6}

CLEANING CLAIMS:

- [XX%] more grease cleaning power
- [A] Clean you can trust
- [All] [Multi-purpose] kitchen [everyday] [daily] [touch-up] [cleaning]
- [Also] [Great] [Made] [Works [well]] [Appropriate] [on] [for] [stainless steel] [metal] [glass surfaces] [stovetop exteriors⁷] [microwave exteriors⁷] [refrigerator exteriors⁷] [faucets] [sinks] [mirrors] [dark tile] [with] [because of] [due to] [the] [low-streak] [residue formula]
- Clean more with less
- Clean to a virtually streak-free shine
- Clean with just a wipe or a touch up
- Cleaning
- Cleaning just got a whole lot easier
- Clean surfaces⁶ at your fingertips
- Cleans
- Cleans [away] [up] dirt, dust and hair
- Cleans [grease] better than ever
- Cleans faster because the [scrubbies] [texture] removes [stubborn] [stuck on] [dirt] [messes]
- Cleans more than ever
- Cleans things you never thought a wipe could
- Cleans to a [Sparkle] [Shine]
- Cleans what you can't see

CLEANING CLAIMS (CON'T):

- Convenience of a wipe [a cloth]
- Convenient
- Cuts through [tough] [dirt] [stains] [grime] [soils] [dried on stains] [dried on soils]
- Cuts Through [Tough] [Messes] [Grease] [Grime]
- [Everyday] [Regular] Cleaning [Wipes]
- [Everyday] [Regular] Wiping
- Extra Power for your tough cleaning jobs Picks up more messes than other wipes
- Extra Power wipe for cleaning extra tough [jobs] [messes]
- Fast drying; leaves no dull or sticky residue
- Faster cleaning and drying [wipe] formula
- For a Powerful Clean
- For everyday messes
- For [light touch ups] [quick clean-ups] [in one easy step]
- For the quick cleaning, try NUGEN® Low Streak Disinfecting Wipes
- For when a regular wipe [just] can't get the job done
- Gets up stuck-on messes [so you don't have to get on hands and knees]
- Cleans greasy messes
- [Great] [Designed] [Built] [Tough] [Textured Design] for your Toughest Messes
- [Great] [Designed] [Built] for Tough [Messes] [Cleaning]
- [Great] for [Spring] [Home] [Kitchen] [Bathroom] [Dorm] [Office] [Cart] [Car] Cleaning
- Great for cleaning around the toilet
- [Great] for Cleaning Your [Home] [Kitchen] [Bathroom] [Room] [Dorm] [Office] [Cart] [Car]
- Great for Cleaning a Classroom
- Great on kitchen grease
- Grimy messes
- Handles daily clean-ups with no need for additional sprays, sponges or buckets.
- Helps you finish cleaning [fast] [quickly]
- [Improved formula] [for] [low] [less] [lower] streaking!
- Leaves your bathroom fresh and clean
- Leaves your [house] [bathroom] [kitchen] fresh and clean
- Life doesn't stop for messes, [Wipe] [Clean] it up
- Life is Messy, [Wipe] [Clean] it up
- [Long lasting] [lasts a long time] [goes further] [last longer]
- [Look] Less streaking
- Low-streak formula [dries clear] [eliminates need to wipe down after use]
- Low-streak formula [for] [cleans] shiny surfaces⁶!
- Low-streak formula is great on [glass] [mirrors] [stainless steel] [stainless]
- [Low-Streak] [Low-Film] [No-Film] [Clear-Drying] [Formula] [Wipe] [cleans] [disinfects] [for] [Shiny] [Multiple Surfaces]
- [Low-Streak] [Low-Film] [No-Film] [Clear-Drying] [Formula] [Wipe]. [For a] [more] [visible] [apparent] [noticeable] [satisfying clean] [Multi-Surface⁶ Wipe]
- [Low-Streak] [Low-Film] [No-Film] [Clear-Drying] [Formula] [Wipe] [Delivers] a Clean you can [see] [smell] [feel] [notice]
- [Low-Streak] [Low-Film] [No-Film] [Clear-Drying] [Formula] [Wipe]. [For a] [more] [visible] [apparent] [noticeable] [satisfying clean] [Multi-Surface⁶ Wipe]
- [Low-Streak] [Low-Film] [No-Film] [Clear-Drying] [Formula] [Wipe] clean[s] thoroughly
- [Low-streak] [Formula] [Wipe] [Cleans] [[is] [even] appropriate] [great for] [kitchen] [bathroom] [household] [surfaces] [places] [like] [stainless steel] [[other] metal] [glass] [mirrors] [[dark] tile] [exterior surfaces of stovetops⁷] [microwaves⁷] [refrigerators⁷] [faucets] [sinks]] [stovetop exteriors⁷] [microwave exteriors⁷] [refrigerator exteriors⁷] [, too]
- [Low-streak] [Formula] [Wipe] For all of your [kitchen] [bathroom] [household] surfaces⁶ [like] [stainless steel] [metal] [glass] [mirrors] [exterior surfaces of stovetops⁷] [microwaves⁷] [refrigerators⁷] [faucets] [sinks]] [stovetop exteriors⁷] [microwave exteriors⁷] [refrigerator exteriors⁷]
- [Low-streak] [Formula] [Wipe] [Great] [Use it] [For] [cleaning] [disinfecting] Every day[,] [on]

hard, non-porous [surface[s]]

CLEANING CLAIMS (cont.):

- [Low-streak] [Formula] [Wipe] [leaves] Less] [Fewer [visible] spots] [spotting] [blotches] [marks [than [ever] before]
- [Low-streak] [Formula] [Wipe] [Lets you] Clean multiple [household] surfaces⁶ [with wipes]
- [Low-streak] [Formula] [Wipe] [Lets you] Clean[s] [throughout] [around] [in] [the] [your] [house]
- Low/lower streak[ing] formula
- Makes [your job] cleaning [easier] [easy]
- No [mixing] [spraying] [mess] [and / or fuss] [no muss]
- No more need to get on your hands and knees to [scrub] [or clean] stubborn spots.
- No sprays, no sponges, no mess
- Now [2x] [3x] [4x] [5x] the [grease] cleaning power
- Now cleaning is [faster] [easier] than [ever] [before]
- Now cleans better on grease
- [One] [Versatile] [low-streaking] wipes for [all] hard, non-porous [kitchen] [bathroom] [household] surfaces
- Our most powerful cleaning formula ever
- Our most powerful [grease] [deep] cleaning wipe ever
- Picks up more messes than other wipes
- Powerful cleaner for kitchen and bath
- Powers through tough messes all over the house
- Powers through [tough messes] [the dirt] [the grime]
- Quick easy clean-ups.
- Removes the grime to give you more time [alt: Removes the grime so you have more time]
- Scrub-N-Wipe[s]
- Scrubs and cleans better than ever
- Scrubs and cleans like no other [wipe]
- See the [low-streak] [low-film] [no-film] [clear-drying] difference [on mirrors] [glass] [shiny surfaces]
- Sticky messes
- Textured wipe reduces streaks [on]
- The convenient way to keep your home looking “just cleaned”
- The wipe to use when you don’t have much time
- [Thick] [Low-Streak] Wipe
- Thick, Low-Streak Wipe[s] [for] [Cleaning] [Clean[s]] Multiple Surfaces⁶ [Anywhere] [Around] [Throughout the] [Home] [Office] [School]!
- Thick, Low-Streak Wipe[s] for [Everyday] [Daily] [Tough] [Cleaning] [Messes] [Anywhere] [Around] [Throughout the Home] [Office] [School]!
- Thick Wipe[s] and Low-Streak Formula for [Everyday] [Daily] [Tough] [Cleaning] [Messes] [Anywhere] [Around] [Throughout the Home] [Office] [School]!
- Touch Up
- Tough cleaning [made easy] [made easier] [at your fingertips]
- Tough cleaning without the tough cleaning smell
- Tough Enough to Clean a Classroom
- Tough enough to do the bigger cleaning jobs.
- Traps & locks away [dirt] [grease] [messes] [crumbs] [hair] [lint] [dust] [dirty greasy messes]
- Traps and locks away dirt
- Traps and locks grease and grime
- Use [daily] to clean bathroom soils such as soap, soap scum, toothpaste, hair spray, hair gel, cosmetics, shaving cream, hand or body lotion.
- No [streaks] [film] [trace left behind]
- [streak-free] [film-free] [shine] [clean]
- Wipes are good for quick touchups
- Wipes Away [Tough] [Everyday] [Messes] [Grease] [Grime]

- Wipe down your seat. Bring [wet] [wipes] [or] [handi-wipes] to wipe down the [arm rests] [window areas] [seatbelt clasps] [and] [tray table] where you'll be sitting.

CLEANING CLAIMS (cont.):

- Wipes Out [Tough] [Everyday] Messes
- Wipes Out [Tough] [Everyday] Grease
- Wipes Out [Tough] [Everyday] Grime
- Wipes Up [Tough] [Everyday] [Messes] [Grease] [Grime]

FRESHNESS CLAIMS:

- Deodorizes
- For a cleaner, fresher [home] [house], great for [all around] the [house] [home] [kitchen] [bath]
- For a long lasting scent experience
- Fresh, clean scent
- Freshens [as you clean]
- Leaves a clean, fresh scent
- Leaves a [light] [clean] [fresh] scent
- Light, clean scent
- Long lasting scent
- [With a] [fresh] [clean] [citrus] [lemon] fragrance

Scent Names

{Note to reviewer: each block below also represents a graphic depicting the corresponding scent with the exception of citrus, apple, and berries, which will be submitted to the Agency for review.}

• [with] [fresh scent] [scent name] [fresh scent]	• Linen & Sky
• [scent names]	• Rocky Springs & Cool
• Meadows & Rain	• Apple Spice & Delight
• Lavender Vanilla & Comfort	• Powder & Elegance
• Vanilla Lavender & Comfort	• Blossoms & Breeze
• Citrus & Light	• Summer & Splash
• Spring & Renewal	• Berries & Paradise

BACTERIOSTATIC CLAIMS:

- 24 [hour] [h] [hr] odor-causing bacteriostatic barrier
- [24 [hour] [h] [hr]] Odor-causing bacteria prevention [for 24 hours]
- [Prevents] [controls] odor-causing bacteria for 24 [hours] [h] [hr]
- [Prevents] [controls] growth of odor-causing bacteria for 24 [hours] [h] [hr]
- [24 hour] [24 h] [24 hr] odor-causing bacteriostatic barrier
- [[24 hour] [24 h] [24 hr]] odor-causing bacteria prevention [for 24 hours]
- Controls the growth of odor-causing bacteria [for 24 hours]

ANTIMICROBIAL CLAIMS:

- 3 [steps] in 1- wipes, scrubs *{must choose one:}* [tough [messes][stains]] [[stubborn][dried-on] spots] and [disinfects⁴] [sanitizes⁵] [so you finish faster]
- All around the house⁶ [disinfecting] [cleaning formula]
- Antimicrobial
- Antimicrobial Formula
- [Antimicrobial] [antimicrobial] [disinfecting] [sanitizing]
- Bacteria that grows in the shower/bathroom
- Clean and [Disinfect] [Sanitize] from Classroom to Playground [and everything in between]
- [Clean and] [disinfect] [commonly touched] [household] hard, non-porous surfaces⁶ in [just] 4 minutes[!]
- [Clean and] [disinfect] in just [4] [four] minutes
- [Clean and] [disinfect] [sanitize] [commonly touched] hard, non-porous surfaces
- Cleans and [disinfects] [sanitizes] [without scratching] [surfaces⁶]

ANTIMICROBIAL CLAIMS (cont.):

- Cleans and [disinfects⁴] [sanitizes⁵] in one step
- Cuts [tough] grease, kills bacteria
- Daily [Surface⁶] [Disinfectant] [Sanitizer] [Cleaner]
- [Designed] [Built] for [disinfecting] [sanitizing] and [cleaning] [wiping] everyday
- [Designed] [Built] for Everyday [Disinfecting] [Sanitizing] [Cleaning] [Wiping]
- [Disinfect] [Sanitize] [Surfaces⁶] [Daily] [Everyday]
- [Disinfect] [Sanitize][Daily] [Everyday]
- [Disinfecting] [Sanitizing] Formula
- [Disinfecting] [Sanitizing] Wipes
- Disinfecting wipes with scrubbing action
- [Disinfects] [Sanitizes]
- Disinfects surfaces⁶ by killing [99.9%] SARS-Related Coronavirus 2 [SARS-CoV-2] [USA-WA1/2020] [in one-step⁴]
- Effective against SARS-Related Coronavirus 2⁶ [SARS-CoV-2] [USA-WA1/2020] [in 15 seconds]
- [Effective against] [Disinfects] [Kills] [99.9%] SARS-CoV-2⁶ [virus]
- [Effective against] [Disinfects] [Kills] [99.9%] SARS-CoV-2⁶ virus, the cause of COVID-19
- Effective in sanitizing [surfaces⁶]
- Effective in the presence of 5% serum contamination
- Eliminate 99.9% of bacteria in [just] 4 minutes[!]
- Eliminates 99.9% [Pseudomonas aeruginosa] [Staphylococcus aureus - Methicillin-Resistant] [Staphylococcus aureus - Community Associated Methicillin-Resistant] [Escherichia coli] [Campylobacter jejuni] [Enterococcus faecalis- Vancomycin Resistant] [Salmonella enterica] in [just] 4 minutes[!]
- Everyday [Surface⁶] [Disinfectant] [Sanitizer] [Cleaner]
- [Finally] a wipe that cleans and [disinfects] [sanitizes]
- Great for Everyday [Disinfecting] [Sanitizing] [Cleaning] [Wiping]
- Hospital Disinfectant
- Kills 99.9% of Germs² [Bacteria] [Viruses*] [Bacteria and Viruses*]
- Kills Cold & Flu Virus^{*,6}
- Kills coronavirus^{3,6} that causes COVID-19
- [Kills] [Effective against] the virus^{3,6} that causes COVID-19
- [Kills] [Eliminates] 99.9% SARS-Related Coronavirus⁶ [SARS-CoV-2] [USA-WA1/2020] [causative agent of COVID-19] [the virus that causes COVID-19]
- [Kills] [Eliminates] [Destroys] 99.9% germs² [in] [just] [4 minutes]
- [Kills] [Removes] [Destroys] {Insert pathogen or pathogens other than avian influenza A from lists on pages 17-18} [on] [pre-cleaned] hard, non-porous environmental surfaces⁶
- [Kills] [Eliminates] [Removes] [Destroys] 99.9% of bacteria
- [Kills] [Eliminates] [Removes] [Destroys] 99.9% of bacteria, leaves [leaving] surfaces⁶ [clean and] disinfected
- [Kills] [Removes] [Destroys] Avian Influenza A H3N2 [and] H5N1 on pre-cleaned environmental surfaces⁶
- Kills Germs² [Influenza Type A, the Flu Virus] [Bacteria] [Bacteria and Viruses*] [Viruses*]
- [Kills] [Wipe Out] 99.9% of [Germs²] [Influenza Type A, the Flu Virus] [Bacteria] [Viruses*]
- Kills germs²
- Kills Salmonella enterica ,Staphylococcus aureus - Methicillin-Resistant & Flu Virus^{*,6}!
- Kills the coronavirus^{3,6} that causes COVID-19
- Kills [the] COVID-19 virus^{3,6}
- Kills the virus^{3,6} that causes COVID-19
- Kills [99.9% of] SARS-CoV-2⁶, which causes COVID-19
- Kills the Flu Virus* on hard, non-porous surfaces
- Kills [Wipes Out] 99.9% [of] [Listeria monocytogenes] [Methicillin-Resistant Staphylococcus Aureus] [Norwalk Virus] on hard, non-porous surfaces
- Leaves hard, non-porous surfaces clean and disinfected
- [Proven to] kill[s] the coronavirus^{3,6} that causes COVID-19

ANTIMICROBIAL CLAIMS (cont.):

- [Proven to] kill[s] the virus^{3,6} that causes COVID-19
- [Proven to] wipe out⁴ 99.9% of the coronavirus^{3,6} that causes COVID-19
- Reduce cross contamination between treated hard, non-porous surfaces
- Remove [99.9% of] [Bacteria] [Germs²] [from] [Kitchen] [Bathroom] [Office] Surfaces⁶
- [Sanitize][Disinfect] [airplane][airliner] [tray[s]] [tray table[s]]
- [Sanitize][Disinfect] the surfaces⁶ of any room in the house
- [Sanitize][Disinfect] [baby][children's] toys^{6,9}
- [Sanitize][Disinfect] [bathroom][sink[s]] [faucet[s]] [toilet[s]] [flush handle][seat] [light switch] [door][handle][knob]
- [Sanitize][Disinfect] the hard, non-porous surfaces of [cabinets], [chairs⁴], [counter[s]top[s]], [shower][door[s]][stalls], [bathtub[s]], [sink[s]], [vanities], [vanity][top[s]], [bathroom][fixture[s]][faucet[s]]
- [Sanitize][Disinfect] the surfaces⁶ of [camping][hiking][boating] equipment
- [Sanitize][Disinfect] the surfaces⁶ of [cell][mobile][phones]
- [Sanitize][Disinfect] [common] [surfaces⁶][items]:[such as] [cribs] [tables] [tabletops] [counters] [countertops] [appliances] [sinks] [glazed tiles] [light switches] [door handles] [railings] [telephones] [trash][garbage][can[s]][receptacle[s]][bin[s]]
- [Sanitize][Disinfect] [computers[s]][keyboards] [touchpads] [mouse]
- [Sanitize][Disinfect] [daycare][childcare] [facilities⁶]
- [Sanitize][Disinfect] [desk tops] [work tables] [work areas] [school desks] [shared equipment⁶]
- [Sanitize][Disinfect] [hotel][motel][public][shared] [TV][television[s]] [remote control[s]][remote[s]] [telephone[s]][phone[s]] [computer[s]][keyboard[s]] [fax machine[s]]
- [Sanitize][Disinfect] [shopping][grocery] cart[s] [handle[s]]
- [Sanitize][Disinfect] the hard, non-porous surfaces¹⁰ of [personal protective equipment][PPE][respirators][full face breathing apparatus][gas masks][goggles][face shields][hearing protection][ear covers][safety ear muffs][helmets][protective head gear][hard hats]
- [Sanitize][Disinfect] the hard non-porous surfaces of [sports][sporting][gym][athletic][workout] [equipment][machines]
- [Sanitize][Disinfect] the hard, non-porous surfaces of [wrestling] [gymnastic] [gym] [athletic] [yoga] [tumbling] [mats] [pads]
- [Sanitize][Disinfect] the [interior][exterior] of hard, non-porous surfaces of [common] [household] [kitchen] [appliances]
- [Sanitize][Disinfect] [your][common] [surfaces⁶][items]:[such as] [high chairs] [booster seats] [strollers] [car seats] [cribs] [tables] [tabletops] [counters] [countertops] [appliances] [sinks] [glazed tiles] [light switches] [door handles] [railings] [telephones] [trash][garbage][can[s]][receptacle[s]][bin[s]]
- [Sanitize][Disinfect] [waiting rooms⁶] [public areas⁶]
- The convenient way to [disinfect] [sanitize] your household hard, non-porous surfaces
- The smart [way to] clean [and disinfect] [and sanitize]
- This product will clean and disinfect hard, non-porous surfaces.
- The wipe that cleans [up [stubborn] [stuck-on] messes]
- This product will clean and disinfect hard, non-porous, non-food surfaces.
- Two in one action [cleans and [disinfects⁴] [sanitizes⁵] in one step]
- Wipe Away⁴ 99.9% of [Germs²] [Influenza Type A, the Flu Virus] [Bacteria] [Viruses*]
- Wipes out⁴ 99.9% of COVID-19-causing coronavirus^{3,6}
- Wipes out⁴ 99.9% of COVID-19-causing virus^{3,6}
- Wipes out⁴ 99.9% of the COVID-19 virus^{3,6}
- Wipe out⁴ 99.9% of germs²
- Wipes out⁴ 99.9% of the coronavirus^{3,6} that causes COVID-19
- Wipes out⁴ 99.9% of the virus^{3,6} that causes COVID-19
- Wipe Up⁴ 99.9% of [Germs²] [Influenza Type A, the Flu Virus] [Bacteria] [Viruses*]
- [With proven] Antimicrobial Action

SANITIZATION CLAIMS:

- 99.9% effective against [Staphylococcus aureus] [Klebsiella pneumoniae] [Campylobacter jejuni] in [just] 15 seconds[!]⁵
- 99.9% effective against bacteria in [just] 15 seconds[!]⁵
- Kills 99.9% of bacteria in [just] 15 seconds[!]⁵
- Kills 99.9% of {note: choose one or more of the following pathogens} [Staphylococcus aureus] [Klebsiella pneumoniae] [Campylobacter jejuni] in [just] 15 seconds[!]⁵
- Sanitize [commonly touched] [household] hard, non-porous surfaces in [just] 15 seconds[!]⁵
- Sanitizing Wipes
- [This product or product name] is an effective sanitizer against [Staphylococcus aureus] [Klebsiella pneumoniae] [Campylobacter jejuni]⁵.

USAGE CLAIMS:

- For Homes, Institutional and Industrial Use
- For hard, non-porous household surfaces [all around the house] indoor and outdoor
- For Institutional and Industrial Use
- For use [at home], [away from home], [in public places] [on the go]
- Multi-purpose
- Multi-surface⁶
- [Send] [Bring] [Wipes] [Me] to School
- Specially formulated for use in the [kitchen] [bathroom]

VALUE CLAIMS:

- [XX]% More [Free] Wipes, Bonus Size, [Bonus] [Free] [27-ct] [35-ct] [XX-ct] Wipes, XX for the Price of [YY]
- [2] [Two] [1] [One] For You [1] [One] For School
- [2] [Two] Free Cloths
- Assorted] [Mixed] [Special] [Variety] [Multiple] [Multi] [Canister] [Bundle] [Pack]
- Back to School [Variety] [Special] [Canister] [Bundle] [Pack]
- Bonus Size
- Convenient [size]
- Get more cleaning done with one wipe
- Guaranteed [to clean longer] [you'll use fewer wipes to clean more]
- Large Size, Small Size, Bonus Pack
- More cleaning in one wipe
- More cleaning power per wipe
- One wipe goes a long way to clean messes
- One wipe can be used to clean messes
- [Special] School [Variety] [Canister] [Bundle] [Pack]
- Spring Cleaning [Special] [Value] [Bonus] [Canister] [Pack]
- Travel [Size] [pack]
- Value Size
- Variety Pack

SURFACE SAFETY CLAIMS:

- Non-abrasive
- Non-scratch[ing]
- Not recommended for use on computer or television monitor screens.
- These [wipes] [towelettes] [cloths] will not harm [most] surfaces.
- Will not scratch

SUBSTRATE CLAIMS:

- 2 sided wipe
- 2 Sides
- [Cloth-like texture] [Textured] for scrubbing power

- Cloth-like [textured] [strong]
- Cloths [Wipes] quickly remove dirt, spots and smudges
- Dual [action] [purpose] [scrubs] [wipes]
- Grooved for [Grime] [Tough Messes] [Grease]
- Improved scrubbing texture
- [Our] toughest wipe ever
- Premoistened
- [Premoistened] [wet] disinfecting [textured] [antimicrobial] [wipes] [towelettes] [cloths]
- [Quilted Texture] [Textured] to [Scrub] [Power] [Fight] Through Tough Messes
- [Special] [Unique] 3-D Texture for Tough Messes
- [Strong] [Thick] wipe
- Strong wipe for Heavy Duty cleaning
- Strong wipe for tougher [jobs] [messes]
- Stronger Wipe for tougher [jobs] [messes]
- [Textured cloth] gets up stubborn stuck on messes
- Textured [cloths] [towelettes] clean floors faster [and easier]
- Textured [Wipe] [cloth] [towelette] [for tough jobs] [for tough cleaning]
- Textured for better [cleaning] [scrubbing] power
- Textured to Pick Up Particles
- The wipe that is [strong] [durable] [thick] [heavy] enough to scrub [and] [clean]
- Thick [wipe], cloth-like texture
- Thicker
- Thicker than an ordinary wipe
- Thicker wipe [cushionyTHICK™]
- Thicker, cloth-like feel for tough messes
- Tough like a towel
- Tough [Textured] Wipes
- [Tough] [Thick] wipe[s] for tough [cleaning] [messes]
- Tough[er] wipe for tough[er] cleaning [jobs]
- [Unique] [Special] [Thick] [Quilted] Texture for Tough [Messes] [Cleaning]
- With [Magic Lock] [Magic Scrub] [Trap n' Lock] [Magic Quilt] fiber[s]
- With a cloth-like 3D texture
- With extra cleaning power [wipes] [sheets] [cloths]
- With [extra] scrubbing power
- With extra strength {*Must choose one:*} [wipes] [sheets] [cloths]

Note to reviewer: A representative graphic of a substrate may be added to the label. Only a graphic of the substrate actually being used can be added to the final printed label.

PACKAGING CLAIMS:

- Better [package] [dispensing]
- Breakthrough package
- [Convenient] [Hassle-free] [One-hand] dispensing
- Dispenses better
- Dispenses Like A Tissue [Tough Like A Cloth [Towel]]
- Dispenses like a tissue, cleans like a cloth
- Easier dispensing
- Easy [dispensing] [Glide Lid]
- Easy dispense [lid] [package]
- Easy dispensing [and] [tough texture] [for the ultimate wipes experience]
- [Easy] [EZ] start
- Easy to [open] [thread] [access lid] [dispense]
- Easy to use
- Easy-glide dispensing top
- [Eco-shape Canister]
- Energy Efficient Canister
- Fewer rips, bunches, and snags
- [Just like a tissue box] [Tissue box dispensing]
- Just [pull] [pop] wipe and toss.
- [Less Oil Consumption], [Landfill Waste], [Production Energy], [and] [Freight Energy]
- No [more] [pinched fingers] [rips] [tears]
- One at a time [dispensing, like a tissue box]
- One wipe at a time dispensing
- Only use approved refill packs.
- Package breakthrough
- Pop up
- Pop and go
- Pop and Clean
- Portable
- Produced with [Wind] [Solar] Energy
- Recyclable packaging
- Refill [size] [pack] [Refill for **NUGEN® Low Streak Disinfectant Wipes container**] [tub]
- [Regular] [and] [Everyday] Wipe Pack
- Specially designed package that easily dispenses one at a time

{Note to reviewer: The following may only be used if the Supplemental Registrant has documentation to support these claims.}

- [XX%] Thicker and Quilted Texture [for Tough] [Messes] [Cleaning]
- [XX%] thicker wipes
- 100% Cotton Wipe fabric
- Converted with 100% [xx%] [wind] [solar] energy
- [Made with] [xx%] less plastic
- [Made with] [xx%] less plastic [than similar size containers][than previous[ly] used container[s]]
- Package contains xx% recycled materials
- Package contains xx% post-consumer waste
- Package is 100% recyclable
- Packaged with 100% [xx%] [wind] [solar] energy
- Packaging contains xx% [post-consumer waste] [recycled materials]
- [Substrate] [Wipe] [Towelette] [Cloth] composed of [100%] [xx%] recycled materials
- [Substrate] [Wipe] [Towelette] [Cloth] composed of [100%] [xx%] renewable materials
- [Substrate] [Wipe] [Towelette] [Cloth] [material] derived 100% from [wood pulp] [cotton] [cellulose] [recycled cellulose]
- [[The][This] product was] [Produced] [Manufactured] with [100%] [xx%] [wind] [solar] energy
- Wipe fabric made from 100% renewable resources

FLOOR MOP CLAIMS:

- Fits [insert name of mop]
- Fits Lysol® Quick Clean & Swiffer® Tools.
- Fits Swiffer®
- Fits Swiffer® Mop-Head
- Fits Swiffer® or Pledge Grab-It® Mop Heads
- For Mopping

LYSOL® is a registered trademark of Reckitt Benckiser Inc.

PLEDGE GRAB-IT® is a registered trademark of S.C. Johnson & Son Inc.

SWIFFER® is a registered trademark of the Proctor & Gamble Company

OTHER CLAIMS:

- [After use], just toss wipe away [in trash][in garbage].
- Bleach Free [formula]
- Call {Insert phone number}
- Comments?
- Contains No Phosphate
- Do not use as a diaper wipe or for personal cleansing.
- Do not use for personal cleansing.
- Does not contain [chlorine] bleach.
- Fragrance-free {Note to reviewer: This claim can only be included on the label when a formula with no fragrance is used.}
- Phosphate free
- Quality Guaranteed
- Questions?
- Ready to Use
- Save time with [this product or product name][!]
- Saves steps
- Saves Time
- This product contains no [phosphates or] phosphorous [compounds].
- Will not bleach surfaces.

NUGEN® Low Streak Disinfecting Wipes:

- [are disinfectant cleaner that] cleans, disinfects⁴ and deodorizes in one labor saving step.
- are designed for your toughest tasks. They are [thick and strong] [thicker and stronger] to stand up to [tough] [your toughest] messes, and they have a cloth-like texture for extra scrubbing power. Plus they kill bacteria to [help] keep your [family's] [home] [clean]. Try it [them] on [your] tough [toughest] messes in the kitchen and bathroom, like baked-on grease on your stove [top]⁷, sticky messes on your counters, and built-up grime on your bathroom sinks.
- deliver disinfectant and cleaning performance
- deodorizes by killing microorganisms [bacteria] that cause offensive odors.
- [help] take the hassle out of dispensing disinfecting wipes. The Easy-Glide Lid dispenses wipes one-at-a-time, like a tissue-box, so you get the number of wipes you want with no pinched fingers, [torn wipes], [or] [jammed lids]. Use it on hard, non-porous bathroom surfaces like countertops, door handles, light switches, toilets, sinks, and tubs.
- help you accomplish things you never thought a wipe could do
- effectively controls malodors.
- is a [one-step] [hospital] disinfectant⁴ cleaner that is effective against a broad spectrum of bacteria when used as directed.
- is a proven "one-step" disinfectant⁴ - cleaner which is effective in the presence of 5% serum contamination.
- is formulated for use in daily maintenance programs with a balance of detergents and malodor counteractants that deliver effective cleaning, disinfecting and malodor control.
- Kills [eliminates] 99.9% of bacteria.
- [Kills] [eliminates] [kitchen] [bathroom] [household] 99.9% of bacteria.
- will disinfect, clean and deodorize hard, non-porous surfaces in restrooms and toilet areas, garbage cans and garbage storage areas, and other places where bacterial growth can cause malodors.
- will not leave grit or soap scum.
- [wipes] [cloths] [sheets] help you to accomplish things you never thought a wipe could do

Cross-contamination is of major [housekeeping] concern. **NUGEN® Low Streak Disinfecting Wipes** have been formulated to aid in the reduction of cross-contamination between treated hard, non-porous surfaces [in the home, schools, institutions and industry.]

Use **NUGEN® Low Streak Disinfecting Wipes:**

- as a disinfectant on hard, non-porous surfaces.
- for non-scratch cleaning of showers and tubs, shower doors and curtains, fixtures and exterior toilet bowl surfaces.
- in federally inspected Meat & Poultry Plants as a disinfectant on all hard, non-porous surfaces in inedible product processing areas, non-processing areas and / or exterior areas.
- to clean and disinfect finished floors, sinks and tubs.
- to clean and disinfect hard, non-porous surfaces of gym equipment, exercise machines, wrestling mats and gymnastic equipment.
- to clean and disinfect the hard, non-porous surfaces¹⁰ of personal [safety] [protection] equipment, protective headgear, hard hats, half mask respirators, full face breathing apparatus, gas masks, goggles, spectacles, face shields, silicone rubber or PVC hearing protectors and vinyl covered ear muffs. Rinse all equipment that comes in contact with skin before reuse with clean warm water [about 120°F], and allow to air dry.
[Precaution: Cleaning at 120°F temperature will avoid overheating and distortion of the personal [safety] [protection] equipment that would necessitate replacement.

[Insert Brand name] is registered in the United States and Trademark Office to [Insert Company Name].

[Insert Brand name] is a registered trademark of [Insert Company Name]

{Note to reviewer: Each entry below also represents a graphic depicting the corresponding area of use. The graphics will only represent individual objects or outsides or insides of buildings as described below. No people, animal, or food will be depicted in graphics.}

[AREAS OF USE:]

Use **NUGEN® Low Streak Disinfecting Wipes** in:

Bathrooms	Barber shops
Children's room	Business and office buildings
Family Rooms [Dens]	Convenience stores
Homes [households]	Food processing plants ³
Kitchens ³	Food storage areas
Living room	Hotels
Playrooms	Institutional facilities
	Institutions
Dental offices	Laundry rooms
Hospitals	Locker rooms
Medical Offices	Motels
Nursing homes	Prisons
	Public facilities
Camp grounds	Public rest rooms
Day care centers	Restaurants ³
Nurseries	Salons
Play ground equipment	Schools
	Shower and bath areas
Bars ³	Sick rooms
Cafeterias ³	
Institutional kitchens ³	Airplanes
USDA inspected food processing facilities ³	Airports
	Ambulances
Athletic facilities	Buses
Colleges	Campers
Correctional facilities	Cars
Dressing rooms	Emergency [Police] [EMS] [Fire] [Rescue] vehicles
Exercise facilities	Mobile homes
Factories	Ships
Health clubs	Taxis
	Trailers
	Trains
	Transportation terminals

Non Food Contact Sanitizing Use Areas: Schools, transportations, airplanes, trains, automobiles, office buildings, dairies, meat processing plants, food processing areas, food handling areas, bars, restaurants, healthclubs, gyms, grocery stores, weight rooms, exercise rooms.

{Note to reviewer: Each entry below also represents a graphic depicting the corresponding type of surface. No people, animal, or food will be depicted in graphics. Only exteriors of microwaves and refrigerators will be depicted. Toy graphics will be submitted to Agency for review.}

[TYPES OF SURFACES:]

Use **NUGEN® Low Streak Disinfecting Wipes** on washable hard, non-porous surfaces of:

Appliances	Toilet seats
Bathroom fixtures	Toys ⁹
Bathtubs [Fiberglass]	Tub walls
Cabinets	Tubs
Cages	Tiles, glazed
Car seat	Walls
Chairs	
Computer keyboards	Non-critical medical device surfaces:
Counters [countertops] [Bathroom] [Kitchen]	Beds [Medical] [Hospital]
Cupboards	Bed frames
Desks	Bed rails
Diaper changing [tables][counters]	Crutches
Diaper pails	Defibrillators
Doorknobs	Gurneys
Equipment tables	Non-critical [hospital] [medical] equipment surfaces
Faucets	[Medical] Examining tables
Faucet Handles	[Medical] [Hospital] Lamps
Floors	Rescue tools
Finished floors	Resuscitators
Garbage cans	[Medical] [Hospital] Scales
Glass	Stands
Highchairs	Stretchers
Lab benches	Stethoscopes
Linoleum	Walkers
Light switches	Wheel chairs
Laminate flooring	Ultra-sound transducers and equipment
Microwave ovens – exteriors ⁷	
Non-Wooden Outdoor [patio] furniture except cushions and wood frames	Other hard, non-porous surfaces made of:
Refrigerators - exteriors	Acrylic
Refrigerated storage and display equipment ⁷	Finished woodwork
Sealed floors	Formica®
Showers	Glass
Shopping cart handles	Glazed ceramic
Shower [stalls] [walls]	Glazed enameled surfaces
Sinks [bathroom, kitchen]	Glazed porcelain
Storage areas	Metal
Stoves ⁷ [stovetops ⁷]	Plastic [such as polystyrene or polypropylene]
Tables, [picnic tables]	Sealed granite
Tanning Beds	Sealed marble
Telephones	Sealed quartz
Exterior Toilet bowl surfaces	Sealed stone
	Stainless steel
	Upholstery- vinyl and plastic

Formica® is a registered trademark of the Diller Corporation

Note: Do not use on unpainted wood, natural marble or brass.

NUGEN® Low Streak Disinfecting Wipes are a one-step [Hospital] disinfectant^{4,5} and Bactericidal [tested according to the modified germicidal spray test] in the presence of 5% organic serum against:
{or}

NUGEN® Low Streak Disinfecting Wipes [are effective against] [Kills][Removes] [Destroys]:

[Bacteria:]

Pseudomonas aeruginosa [*Pseudomonas*] [ATCC 15442]

Salmonella enterica [*Salmonella*] [ATCC 10708]

Staphylococcus aureus [*Staph*] [ATCC 6538]

Acinetobacter baumannii [ATCC BAA-1709]

Burkholderia cepacia [ATCC 25416]

Campylobacter jejuni [*Campylobacter*] [ATCC 29428]

Corynebacterium ammoniagenes [ATCC 6872]

Enterobacter aerogenes [ATCC 13048]

Enterococcus faecalis [*Enterococcus*] [ATCC 29212]

Enterococcus faecalis- Vancomycin Resistant [VRE] [ATCC 51575]

Escherichia coli [*E. coli*] [ATCC 11229]

Escherichia coli O157:H7 [ATCC 35150]

ESBL *Escherichia coli* – [Extended spectrum beta-lactamase producing *E. coli*] [ATCC BAA-196]

Klebsiella pneumoniae [*Klebsiella*] [ATCC 4352]

Klebsiella pneumoniae (NDM-1) [New Delhi metallo-beta-lactamase 1] [CDC 1000527]

Legionella pneumophila [ATCC 33153]

Listeria monocytogenes [ATCC 19117]

Salmonella schottmuelleri [*Salmonella*] [ATCC 8759]

Salmonella typhi [*Salmonella*] [ATCC 6539]

Serratia marcescens [*Serratia*] [ATCC 14756]

Shigella dysenteriae [*Shigella*] [ATCC 11835]

Staphylococcus aureus - Community Associated Methicillin-Resistant [CA-MRSA] [NRS384] [USA300]

Staphylococcus aureus - Community Associated Methicillin-Resistant [CA-MRSA] [NRS123] [USA400]

Staphylococcus aureus - Methicillin-Resistant [MRSA] [ATCC 33592]

Staphylococcus aureus - Multi-Drug Resistant [resistant to tetracycline [Tc], penicillin [Pc], streptomycin [Sm] and erythromycin [Em] and susceptible to chloramphenicol [Cm] *in vitro*] [ATCC 14154]

Staphylococcus aureus-Vancomycin Intermediate Resistant – [VISA] [CDC HIP 5836]

Streptococcus pyogenes [Strep] [a cause of scarlet fever] [ATCC 14289]

Vibrio cholerae [ATCC 14035]

[Viruses:]

*Hepatitis B Virus [HBV] [7/31/07 strain of duck Hepatitis B virus (DHBV), Hepadnavirus]

*Hepatitis C Virus [HCV] [Oregon C24v-genotype 1 Strain]

*Herpes Simplex Virus Type 1 [HSV-1 Sabin]

*Herpes Simplex Virus Type 2 [HSV-2 Sabin]

*HIV-1 [AIDS Virus] [Strain HTLV IIIB]

*Human Coronavirus [ATCC VR-740, Strain 229E]

*Influenza Type A Virus [Influenza] [[the] Flu [Virus]] [A/11/1978]

*Influenza A Virus H1N1 [ATCC VR-1469, Strain A/PR/8/34]

*Influenza A Virus (H7N9) [A/Anhui/1, Centers for Disease Control and Prevention CCID/NCIRD/ID/MVVB]

*Respiratory Syncytial Virus [RSV] [ATCC VR-26, Strain Long]

*Rotavirus [ATCC VR-2018, WA strain]

*SARS Associated Coronavirus [SARS] [cause of Severe Acute Respiratory Syndrome] [CDC#200300592, ZeptoMetrix]

*SARS-Related Coronavirus 2 [SARS-CoV-2] [cause of COVID-19] [strain 1/2020, Source: BEI Resources, NR-52281]

*Vaccinia Virus [ATCC VR-119, WR strain]

[Animal Viruses:]

Avian Influenza Virus H3N2 [ATCC VR-2072]

Avian Influenza Virus H5N1 [CDC # 2006719965]

Canine Distemper Virus [ATCC VR-128, Strain Lederle]

Newcastle's Disease Virus [ATCC VR-108 Strain B1, Hitchner or Blacksburg]

Pseudorabies Virus [ATCC VR-135, Strain Aujeszky]

{Note to Reviewer: These statements for claims against enveloped and large, non-enveloped viruses, shall not appear on marketed (final print) product labels.}

EMERGING VIRAL PATHOGENS

This product qualifies for emerging viral pathogen claims per the EPA's 'Guidance to Registrants: Process for Making Claims Against Emerging Viral Pathogens not on EPA-Registered Disinfectant Labels' when used in accordance with the appropriate use directions indicated below.

This product meets the criteria to make claims against certain emerging viral pathogens from the following viral category[ies]:

- Enveloped Viruses

For an emerging viral pathogen that is a/an...	...follow the directions for use for the following organisms on the label:
Enveloped virus	Rotavirus

[NUGEN® Low Streak Disinfectant Wipes] has demonstrated effectiveness against viruses similar to [name of emerging virus] on hard, non-porous surfaces. Therefore, [NUGEN® Low Streak Disinfectant Wipes] can be used against [name of emerging virus] when used in accordance with the directions for use against Rotavirus on hard, non-porous surfaces. Refer to the [CDC or OIE] website at [pathogen-specific website address] for additional information.

OR

[Name of illness/outbreak] is caused by [name of emerging virus]. [NUGEN® Low Streak Disinfectant Wipes] kills similar viruses and therefore can be used against [name of emerging virus] when used in accordance with the directions for use against Rotavirus on hard, non-porous surfaces. Refer to the [CDC or OIE] website at [website address] for additional information.

{Note to reviewer: Representative graphic of wipe tub and/or hand pulling out wipe fabric may be added to the label}

{For canister}

To Open Package:

Remove cover. Pull up [towelette] [wipe] [cloth] corner from center of roll. Thread through hole in the cover. Replace cover. Open center cap on cover to remove wipe. When not in use [When not using], close center cap [securely] to prevent moisture loss.

or {For carton or tub}

To Open Package: Open cover and slowly. Remove [Pull out] [wipe] [towelette] [cloth] as needed. To retain moisture, reseal [carton] [tub] by firmly closing [carton or tub] cover.

or

To Open Package: [Remove package seal[s]] [Remove safety seal[s]] [Flip] Open lid. To remove first wipe [sheet] [wet cloth] [cloth] pull up on wipe and remove wipe through [dispensing] opening [wavy dispensing opening] [orifice]. [The next wipe will pop up automatically]. [Always] close [snap] lid securely between uses [to retain moisture].

or

To Open Package: [Remove package seal[s]] [Remove safety seal[s]]. Open [Flip open lid [package]]. To start [remove] [first] wipe [sheet] [wet cloth] take the edge of wipe from large opening to the small dispensing opening and pull up. [The next wipe [sheet] [wet cloth] [cloth] will pop up automatically.] [Always] close [snap] lid securely between uses [to retain moisture].

or

To Open Package: Open Lid. To start wipes, pull up on wipe and move wipe into the small dispensing opening [orifice] [aperture] [hole] [wave] and [pull sheet up to remove wipe] remove wipe. [The next wipe [sheet] [wet cloth] will pop up automatically]. [Always] close [snap] lid securely between uses [to retain moisture].

or

To Open Package: Flip open[up] the lid[cover][top][cap][dispensing lid]. Thread the wipe [first wipe][cloth][first cloth][sheet] through the dispensing lid and pull up to remove wipe from package. The next wipe [sheet][cloth] pops up automatically. Close lid securely between uses to retain moisture [prevent moisture loss].

or

To Open Package: Press the three [3] ridges with your thumb and push up on the cap[top][lid] to open[lid]. To remove wipe [sheet] [wet cloth] [cloth] [towelette] pull up on wipe and remove wipe through [dispensing] opening [wavy dispensing opening] [orifice]. [The next wipe will pop up automatically].

or

To Open Package: Press the three [3] ridges with your thumb and push up on the cap[top][lid] to open[lid]. Thread the wipe [sheet] [wet cloth] [cloth] [towelette] through the dispensing lid and pull up to remove wipe from package. The next wipe will pop[pull] up automatically. [Always] Close [snap] lid securely between uses [to retain moisture].

or

To Open Package: Press the three [3] ridges with your thumb and push up on the lid to open. Thread the wipe through the dispensing lid and pull up to remove wipe from package. The next wipe will pop up automatically. Close lid securely between uses to retain moisture.

or

To Open Package: Push the area marked ["Press"] ["Push"] ["Press Here"] ["Push Here"] with your thumb and push up on the lid to open. Thread the wipe through the dispensing lid and pull up to remove wipe from package. The next wipe will pop up automatically. Close lid securely between uses to retain moisture.

or

To Open Package: Open dispenser and top of bag. Pull out the first wipe approximately 6 to 8 inches from the center of the roll. Place the entire bag inside of dispenser. Thread the wipe through the opening on the dispenser lid. Close the lid to retain moisture.

or

To Open Package: Open cover and slowly peel back label. Remove cloth as needed. To retain moisture, close cover.

or

To Open Package: Open cover and slowly peel back label. Remove wipe as needed. To retain moisture, re-close by firmly pressing and close tub cover.

or {For refill, pouch or bag}

To Open Package:

[Slowly] peel back the label [open seal]. Remove [Pull out] [wipe] [towelette] [cloth] as needed. To retain moisture, reseal [pouch] [bag] by firmly pressing seal back on the [pouch] [bag]

or

To Open Package:

[Tear] [Cut] open wipe [pouch] [bag] [along dotted line]. Remove canister lid and place [bag with] roll into empty canister. Locate wipe [edge] at center of roll and thread wipe through canister opening [at angle]. Do not push finger through opening. Replace lid on canister and close tightly. Finish pulling wipe through opening. Wipes will feed automatically

or {For the Travel Pack size}

To Open Package: Slowly peel back label. [Pull out] [Remove] [wipes] [towelettes] [cloths] as needed. Reseal label to retain moisture.

or **To Open Package:** Open ziplock [Tear edge of pack]. [Pull out] [Remove] [wipes] [towelettes] [cloths] as needed. Reseal ziplock to retain moisture.

or {For the single cloth or sample pack}

To Open Package: Tear [pouch] open [at top edge of pouch] [at tear notch] [along dotted line] [where indicated] [edge of pack]. [Pull out] [Remove] [Wipe] [Towelette] [Cloth].

{For product supplied in a single use pouch with a folded towellete, include the following:}

Unfold [Wipe] [Towelette] [Cloth]

DIRECTIONS FOR USE:

It is a violation of Federal law to use this product in a manner inconsistent with its labeling.

[Do not use as a diaper wipe or for personal cleansing.]

[This is not a baby wipe!]

[Do not flush [in toilet].]

[For plastic and painted surfaces, spot test on an inconspicuous area before use.]

[This product *or product name*] will not harm most surfaces: including acrylic, sealed fiberglass and vinyl.

[Do not use on unpainted wood.]

[Note: Not recommended for unpainted wood, natural marble or brass.]

TO CLEAN AND DEODORIZE:

Wipe hard, non-porous surface with [wipe] [towelette] [cloth] [sheet]. Let air dry. Discard used [wipe] [towelette] [cloth] [sheet] in trash. Do not flush [in toilet].

[TO] CLEAN [CLEANING] AND DISINFECT [DISINFECTION / VIRUCIDAL*] DIRECTIONS:

Wipe hard, non-porous surface with [wipe] [towelette] [cloth] [sheet] until surface is visibly wet. [Use enough wipes to visibly wet surfaces.] [Use [enough] [extra] wipes to keep surfaces visibly wet for 4 minutes.] [Keep surfaces visibly wet for 4 minutes.] [Wipe surface and let it remain visibly wet for 4 minutes.] Allow surface to remain visibly wet for 4 minutes. *{Note to reviewer: if using claims for Rotavirus, the following sentence will be required:}* [For **Rotavirus** treated surfaces must remain visibly wet for 10 minutes.] *{Note to reviewer: if using claims for SARS-CoV-2, the following sentence may be used:}* [For **SARS-CoV-2**, treated surfaces must remain visibly wet for 15 seconds.] [Let air dry.] [[Let] [Permit] surface to [air] dry.]

If surfaces are visibly dirty, clean first with another [wipe] [towelette] [cloth] [sheet] before disinfecting.

Discard used [wipe] [towelette] [cloth] [sheet] in trash. Do not flush [in toilet].

Rinse food contact surfaces with clean, potable water after disinfecting. Do not use to disinfect dishes, glassware or utensils.

For mold and mildew stain control: NUGEN® Low Streak Disinfecting Wipes will effectively inhibit the growth of mold and mildew and the odors caused by them when applied to hard, non-porous surfaces. Wipe surface and let it remain visibly wet for 4 minutes. Repeat treatment every seven days, or more often if new growth appears.

***KILLS HIV AND HBV AND HCV ON PRE-CLEANED HARD, NON-POROUS ENVIRONMENTAL SURFACES / OBJECTS PREVIOUSLY SOILED WITH BLOOD / BODY FLUIDS** in health care settings or other settings in which there is an expected likelihood of soiling of inanimate surfaces / objects with blood or body fluids, and in which the surfaces / objects likely to be soiled with blood or body fluids can be associated with the potential for transmission of Human Immunodeficiency Virus Type 1 [HIV-1] [associated with AIDS] or Hepatitis B Virus [HBV] or Hepatitis C Virus [HCV].

Special Instructions for Cleaning and Decontamination against HIV-1 or HBV or HCV on Surfaces / Objects Soiled With Blood / Body Fluids.

Personal protection: Clean-up must always be done wearing protective gloves, gowns, masks and eye protection.

Cleaning procedure: Blood and other body fluids containing HIV or HBV or HCV must be visibly cleaned from surfaces and objects before application of **NUGEN® Low Streak Disinfecting Wipes**. **NUGEN® Low Streak Disinfecting Wipes** [this product] [wipe] [towelette] [cloth] [sheet] can be used for this purpose.

Contact time: Leave surface visibly wet for 1 minute [60 seconds] for HIV-1. Use appropriate contact time as listed on label for all other viruses[,] [and] bacteria claimed.

Disposal of infectious material: Blood, body fluids, cleaning materials and clothing must be disposed of according to local regulations for infectious waste disposal.

{Note to reviewer: If Avian Influenza A is listed on the label the following statement is required.}

This product is for use on hard, non-porous surfaces not conducive to treatment by immersion or excess liquid against Avian Influenza A.

Note for reviewer: For labels that list medical premises and metal and / or stainless steel surfaces, one of the following statements must be used:}

This product is not to be used as a terminal sterilant / high level disinfectant on any surface or instrument that [1] is introduced directly into the human body, either into or in contact with the bloodstream or normally sterile areas of the body, or [2] contacts intact mucous membranes but which does not ordinarily penetrate the blood barrier or otherwise enter normally sterile areas of the body. [This product may be used to pre-clean or decontaminate critical or semi-critical medical devices prior to sterilization or high level disinfection.]

{or}

This product is not for use on medical device surfaces.

SANITIZING [DEODORIZING]:

To sanitize [deodorize] hard, non-porous, non-food contact surfaces, wipe surface, using enough [wipes] [towelettes] [cloths] to allow treated surface to remain visibly wet for 15 seconds for *Staphylococcus aureus* [ATCC 6538], *Klebsiella pneumoniae* [ATCC 4352], and *Campylobacter jejuni* [ATCC 29428]. Let surface dry. For visibly soiled surfaces, clean visible soil first.

For bacteriostatic use: NUGEN® NR Disinfectant Wipes will effectively inhibit the growth of odor causing bacteria when applied to hard, non-porous surfaces. For visibly soiled surfaces, clean visible dirt [from the surface] first. Wipe surface and let it remain visibly wet for 4 minutes. Repeat treatment every 24 hours, or more often if new growth appears.

DIRECTIONS FOR FLOOR WIPE USE:

It is a violation of Federal Law to use this product in a manner inconsistent with its labeling.

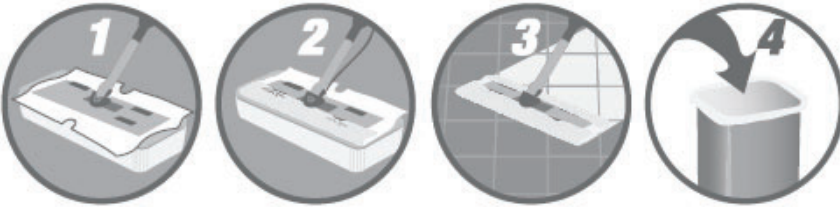
TO CLEAN AND DEODORIZE: Wipe floor with wipe. Let air dry. Discard used wipe in trash. Do not flush [in toilet].

TO CLEAN AND DISINFECT FLOORS: For visibly soiled surfaces, clean visible dirt [from the surface] first. [Attach a premoistened wipe to the mop head using the [velcro] [fasteners] provided.] Visibly wet floor with wipes. [Change wipe when soiled.] or [Replace with a fresh wipe once visibly soiled or no longer visibly wetting the surface.] Allow surface to remain visibly wet for 4 minutes. Let air dry. On average, one wipe will clean [10] [x] square feet of floor. For a larger area you may need to use more than one wipe. Discard used wipe in trash. Do not flush [in toilet]. Contact manufacturer of wood floors prior to use.

Note: Not recommended for unpainted wood, natural marble or brass.
Do not use on unfinished, oiled or waxed wood, unsealed tiles or carpet. Keep container flat and lid securely closed to keep cloths moist.

Do not use to disinfect dishes, glassware or utensils. Do not use as a diaper wipe or for personal cleansing.

Use on
mop
head.



[Optional representative graphic]

TO OPEN:

1. Cut off top of pouch with scissors.
2. Remove wipes from pouch.
3. Place wipes in plastic tub.
4. Discard empty pouch into trash.

TO USE WITH MOP:

1. Unfold top wipe in tub by pulling sides of the cloth over edges of tub.
2. Place sweeper on head.
3. Wrap wipe around head of sweeper.
4. Push edges of wipe into top of sweeper head.
5. Begin wiping. No rinsing required.
6. After use, remove soiled wipe and discard in trash. Do not flush [in toilet].

{Note to reviewer: Nonrefillable container}

STORAGE AND DISPOSAL

Nonrefillable container. Store in original container in areas inaccessible to children. Keep securely closed. Do not reuse or refill this container. Discard empty container in trash or recycle [if available].

{Note to reviewer: Refillable container}

STORAGE AND DISPOSAL

Refillable container. Store in original container in areas inaccessible to children. Keep securely closed. [Reuse] [Refill] empty container only with **NUGEN® Low Streak Disinfecting Wipes** [refills]. Do not reuse this container except as described. If not refilling, discard empty container in trash or recycle [if available].

Footnotes:

¹ Includes weight of absorbent wipe.

² **Note to reviewer:** *If a supplemental label is using the “Germs” claim, per the EPA Guidance on use of the term “Germs” in order to make a qualified “germ” claim the supplemental label must be a broad spectrum disinfectant and list additional claims against: Viruses and must bear disinfectant directions. The front panel of the label for a qualified claim must contain a designator [such as **] that refers the user to the qualified statements that describes the type of germ the product is efficacious against.*

³ SARS-Related Coronavirus 2

⁴ When used according to the disinfection directions

⁵ When used according to the sanitization directions

⁶ On hard, non-porous, non-food surfaces

⁷ Allow the surface to adjust to room temperature before disinfection

⁸ X-hour prevention of odor-causing bacteria when used according to the bacteriostatic directions

⁹ Rinse toys with clean, potable water after disinfecting.

¹⁰ External surfaces only.

{PACKET LABEL TO BE USED WITH MASTER CONTAINER LABEL}

NUGEN® LOW STREAK DISINFECTING WIPES

Active Ingredients:

Octyl decyl dimethyl ammonium chloride.....	0.0909%
Dioctyl dimethyl ammonium chloride.....	0.0364%
Didecyl dimethyl ammonium chloride.....	0.0545%
Alkyl (C ₁₄ , 50%; C ₁₂ , 40%; C ₁₆ , 10%) dimethyl benzyl ammonium chloride	0.1212%
Other Ingredients:.....	<u>99.6970%</u>
Total.....	100.0000% ¹

¹ Includes weight of absorbent wipe.

KEEP OUT OF REACH OF CHILDREN

CAUTION [PRECAUCIÓN]

See outer container for Precautionary Statements and Use directions

DISPOSAL: Dispose [wipe] [towelette] [Cloth] in trash after use. Discard empty [pouch] [packet] in trash.

EPA. Reg. No. 6836-382
EPA. Est. No. *(insert EPA Est. No. here)*
Net Contents:
Net Weight:
[optional - wipe dimensions:] X x X [inches] [in.]

Arxada, LLC
412 Mount Kemble Avenue
Suite 200S
Morristown, NJ 07960

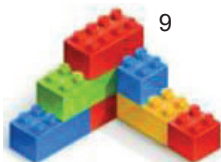
{Note to reviewer: The following are optional graphics. Please refer to Note 9 on page 24 regarding toys. Any final printed label containing an EPA-approved toy graphic will be required to include the text of footnote 3 about rinsing.}



{Note to Reviewer: Similar representative graphics may be added for the final printed label}



9



9

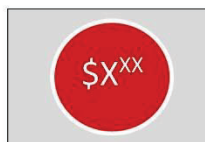
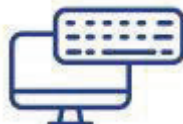


9

{Note to reviewer: The following is an optional graphic that will be used to illustrate the scent.}



{Note to reviewer: The following are considered optional graphics and marketing language.}



{Note to reviewer: The following is an optional graphic that may be used to illustrate non-public health bacteriostatic claims for odor-causing bacteria.}





Preparing Material for Recycling

Information is provided to ensure the proper steps are taken to effectively recycle materials.



The Multi-Component Labels

We want to be sure that you know how to recycle your whole package, not just a part of it! For a How2Recycle label like the one at right, each "tile" represents a different part of the package. This is really helpful when you're trying to know how to recycle different parts of your package. How2Recycle labels are intended to be read left to right, based on which part of the packaging you encounter first.



How2Recycle

Information and locational instructions let you know if an item can be recycled traditionally or by other means.



Widely Recycled



Limited Recycling

If not recycled in all communities



Not Yet Recycled



Store Drop-off



Type of Recyclable Material

Lists what type of material the packaging is made from.



Lists Recyclable Parts of Packaging

Information on what parts of the packaging needs to be recycled in this specific way.



{RECYCLING LOGO: The below graphics can be used to build a recycling logo. Any combination of top, middle, material, and bottom section can be used to build the logo. A recycling logo is optional and may be presented as shown below or may differ slightly in graphic design but not intent on the final marketed product label.}

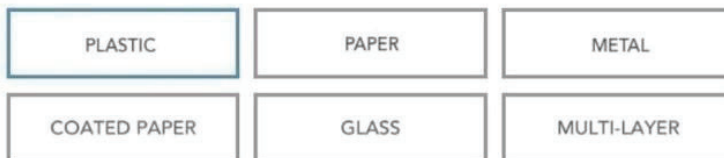
{TOP SECTION:}



{MIDDLE SECTION:}



{MATERIAL SECTION:}



{BOTTOM SECTION:}



{OPTIONAL TEXT:}

*Not recycled in all communities
how2recycle.info

{Examples of final logos built from above sections:}

