



UNITED STATES ENVIRONMENTAL PROTECTION AGENCY  
WASHINGTON, DC 20460

OFFICE OF CHEMICAL SAFETY  
AND POLLUTION PREVENTION

December 12, 2022

Jennifer DePietro  
Regulatory Assurance Specialist  
Arxada, LLC  
Electronic Transmittal: Jennifer.depietro@arxada.com

Subject: PRIA Label Amendment – Revision of SARS-CoV-2 and other efficacy claims  
Product Name: Lonza Disinfectant Wipes Plus 2  
EPA Registration Number: 6836-340  
Received Date: 7/22/2022  
Action Case Number: 00380787

Dear Ms. DePietro:

The amended label referred to above, submitted in connection with registration under the Federal Insecticide, Fungicide and Rodenticide Act, as amended, is acceptable. This approval does not affect any conditions that were previously imposed on this registration. You continue to be subject to existing conditions on your registration and any deadlines connected with them.

A stamped copy of your labeling is enclosed for your records. This labeling supersedes all previously accepted labeling. Pursuant to 40 CFR 156.10(a)(6), you must submit one copy of the final printed labeling before you release the product for shipment with the new labeling. In accordance with 40 CFR 152.130(c), you may distribute or sell this product under the previously approved labeling for 18 months from the date of this letter. After 18 months, you may only distribute or sell this product if it bears this new revised labeling or subsequently approved labeling. "To distribute or sell" is defined under FIFRA section 2(gg) and its implementing regulation at 40 CFR 152.3.

Should you wish to add/retain a reference to the company's website on your label, then please be aware that the website becomes labeling under FIFRA and is subject to review by the Agency. See FIFRA section 2(p)(2). If the website is false or misleading, the product would be misbranded and unlawful to sell or distribute under FIFRA section 12(a)(1)(E). 40 CFR 156.10(a)(5) lists examples of statements EPA may consider false or misleading. In addition, regardless of whether a website is referenced on your product's label, claims made on the website may not substantially differ from those claims approved through the registration process, FIFRA section 12(a)(1)(B). Therefore, should the Agency find or if it is brought to our attention that a website contains false or misleading statements or claims substantially differing from the EPA approved registration, the website will be referred to the EPA's Office of Enforcement and Assurance.

Your release for shipment of the product constitutes acceptance of these conditions. If these conditions are not complied with, the registration will be subject to cancellation in accordance

Page 2 of 2  
EPA Reg. No. 6836-340  
Action Case No. 00380787

with FIFRA section 6. If you have any questions, please contact Tara Flint Silva via email at [flintsilva.tara@epa.gov](mailto:flintsilva.tara@epa.gov).

Sincerely,

A handwritten signature in black ink that reads "Tara M. Flint Silva". The signature is written in a cursive, flowing style.

Tara Flint Silva, Acting Product Manager 31  
Regulatory Management Branch I  
Antimicrobials Division  
Office of Pesticide Programs

Enclosure: Stamped label

Note to Reviewer: [Items in brackets [AAA] and the brackets themselves are optional and may/may not be included on final label]  
{Language in braces {AAA} is for informational purposes and will not appear on the final label}

# LONZA DISINFECTANT WIPES PLUS 2

[One-Step<sup>4</sup>] / [Disinfectant<sup>6</sup>] / [Virucide\*] / [Sanitizer<sup>7</sup>]

Kills Flu Virus\*<sup>4</sup>

Active Ingredients:

Octyl decyl dimethyl ammonium chloride .....	0.0909%
Dioctyl dimethyl ammonium chloride .....	0.0364%
Didecyl dimethyl ammonium chloride .....	0.0545%
Alkyl (C <sub>14</sub> , 50%; C <sub>12</sub> , 40%; C <sub>16</sub> , 10%) dimethyl benzyl ammonium chloride.....	0.1212%
Other Ingredients: .....	99.6970%
Total.....	100.0000% <sup>1</sup>

## KEEP OUT OF REACH OF CHILDREN CAUTION [PRECAUCIÓN]

See [left] [side] [right] [back] [bottom] panel for Precautionary Statements and First Aid

Manufactured by:  
Arxada, LLC  
412 Mount Kemble Avenue  
Suite 200S  
Morristown, NJ 07960

EPA Reg. No. 6836-340

EPA Est. No. (as indicated on container)

Net Contents: (insert #) [premoistened] [towelettes] [wipes] [disinfecting] [antimicrobial] [cleaning] [wet] [multi-purpose] [touch-up] [pre-moistened cloths] [sheets]

Net Contents: [expressed as avoirdupois pounds and ounces]

[optional: wipe dimensions:] X x X [inches] [in.]

[Minimum WT.]

[Barcode]

[DOT Symbols]

[QR Code]

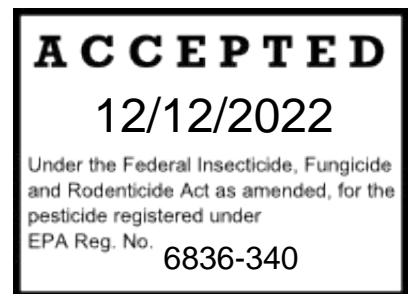
[Country of origin (insert country)]

[Manufactured in (insert country)] [with Domestic and Imported Ingredients]

{Note to Reviewer: for multi-packs}

[2][3][x][canister] [pack]

[[Bonus] Twin pack]



[Do not flush]

**PRECAUTIONARY STATEMENTS**

**HAZARDS TO HUMANS AND DOMESTIC ANIMALS**

Caution. Causes moderate eye irritation. Avoid contact with eyes or clothing. Wash thoroughly with soap and water after handling and before eating, drinking, chewing gum, using tobacco or using the toilet.

**FIRST AID**

**IF IN EYES:** Hold eye open and rinse slowly and gently with water for 15-20 minutes. Remove contact lenses, if present, after first 5 minutes, then continue rinsing eye.

Call a poison control center [*insert phone number*] or doctor for treatment advice. Have the product container or label with you when calling poison control center or doctor or going for treatment.

*{Optional Emergency contact information}*

*[For emergency information on [product, usage, etc.], call [1-XXX-XXX-XXXX], Monday through Friday, 9 a.m. to 5 p.m. After 5 p.m. call your poison control center at 1-800-222-1222.]*

*{Note to reviewer: Pages 3-17 are considered optional marketing language. All designators (i.e. asterisks and numbers) used throughout the label may be interchanged as needed on final printed label.}*

*{Note to reviewer: The following claims containing "New" may only be used for a period of six months after EPA's approval of a revised or alternate formula, beginning when the product is first sold or distributed.}*

- 2 New Wipes
- New
- New easy to dispense
- New easy-glide dispensing top
- New Easy [Start Lid] [Start Package] [Grab Lid]
- New EZ [to start lid] [start package] [Grab Lid]
- New larger [bigger]-sized wipe
- New Larger Size
- New More Scrubbing Power
- New Strong wipe for tougher [jobs] [messes]
- New Stronger Wipe for tougher [jobs] [messes]
- New [thick] [textured] wipe
- New Top
- New tougher wipe for tougher cleaning [messes]
- New tougher wipe for [your] tough[er] jobs
- New Wipes
- [New] [Now] [low-streak] formula

#### **CLEANING CLAIMS:**

- Clean more with less
- Clean to a virtually streak-free shine
- Cleans [away] [up] dirt, dust and hair
- Convenience of a wipe [a cloth]
- [Everyday] [Regular] [Cleaning] Wipes
- Fast drying; leaves no dull or sticky residue
- Faster acting [wipe] formula
- For [light touch ups] [quick clean-ups] [in one easy step]
- For the quick touch ups, try Lonza Disinfectant Wipes Plus 2
- For when a regular wipe [just] can't get the job done
- Great for cleaning around the toilet
- Great on kitchen grease
- Grimy messes
- Handles daily clean-ups with no need for additional sprays, sponges or buckets.
- Heavy [light] duty [jobs]
- Helps you finish [cleaning] fast [quickly]
- Leaves [a streak free shine]
- Leaves your [bathroom] fresh and clean
- Low-streak formula is great on [glass] [mirrors] [stainless steel] [stainless]
- Makes [your job] [cleaning] [easier] [easy]
- No [mixing] [spraying] [mess] [and / or fuss] [no muss]
- No sprays, no sponges, no mess
- Our most powerful [grease] [deep] cleaning wipe ever
- Our most powerful cleaning formula ever
- Picks up more messes than other wipes
- Powers through [tough messes] [the dirt] [the grime]
- Powers through tough messes
- Quick easy clean-ups.
- Streakfree
- Touch Up
- Tough cleaning [made easy] [made easier] [at your fingertips]
- Wipes are good for quick touchups

## FRESHNESS AND ODOR ELIMINATION CLAIMS:

- Deodorizes
- Don't just mask odors – [eliminate][neutralize] them
- [Eliminates][Neutralizes] odors [and freshens] on contact
- Leaves a [light] [clean] [fresh] scent
- Leaves a clean, fresh scent

### Scent Names

*{Note to reviewer: each scent below may also be represented by a graphic depicting the corresponding scent with the exception of apple which will be submitted to the Agency for review.}*

FRESH / [SUMMER] CITRUS/ FLORAL/ MINT/ PINE / LEMON / WOODY/ LIME / MELON/ CLEAN / WATERFALL / [ULTIMATE] ORANGE / [SPARKLING] APPLE / INVIGORATING BREEZE / SPRING GARDEN / LAVENDER [FRESH] / GRAPEFRUIT / FRAGRANCE / [ULTRA FRESH] SCENT / SCENTED

*{Note to reviewer: each block below also represents a graphic depicting the corresponding scent with the exception of citrus, apple, and berries, which will be submitted to the Agency for review.}*

- [with] [fresh scent] [scent name] [fresh scent]
- [scent names]
- Meadows & Rain
- Lavender Vanilla & Comfort
- Vanilla Lavender & Comfort
- Citrus & Light
- Spring & Renewal
- Linen & Sky
- Rocky Springs & Cool
- Apple Spice & Delight
- Powder & Elegance
- Blossoms & Breeze
- Summer & Splash
- Berries & Paradise

## CLEANING AND ODOR ELIMINATION CLAIMS:

- A fresh take on tough cleaning
- An effective way to clean and deodorize against odor-causing bacteria.
- Eliminate dirt and [neutralize] odor
- Freshens [as you clean]
- Power[s] through [tough] [messes] [dirt] [and grease] and [help[s]] [eliminate[s]][neutralize[s]] odors

## BACTERIOSTATIC CLAIMS:

- 24 [hour] [h] [hr] odor-causing bacteriostatic barrier
- [24 [hour] [h] [hr]] Odor-causing bacteria prevention [for 24 hours]
- [Prevents] [controls] odor-causing bacteria for 24 [hours] [h] [hr]
- [Prevents] [controls] growth of odor-causing bacteria for 24 [hours] [h] [hr]
- [24 hour] [24 h] [24 hr] [48 hour] [48 h] [48 hr] [72 hour] [72 h] [72 hr] odor-causing bacteriostatic barrier
- [[24 hour] [24 h] [24 hr] [48 hour] [48 h] [48 hr] [72 hour] [72 h] [72 hr]] Odor-causing bacteria prevention [for [24] [48] [72] hours]
- Controls the growth of odor-causing bacteria [for [24] [48] [72] hours]

## ANTIMICROBIAL CLAIMS:

- 3 [steps] in 1- wipes, scrubs *{must choose one:}* [tough [messes][stains]] [[stubborn][dried-on] spots] and [disinfects<sup>6</sup>] [sanitizes<sup>7</sup>] [so you finish faster]
- Antimicrobial
- Antimicrobial Formula
- [Antimicrobial] [disinfecting] [sanitizing]
- [Clean and] [disinfect] in just [4] [four] minutes
- [Clean and] [disinfect] [sanitize] [commonly touched] surfaces<sup>4</sup>
- Cleans and [disinfects] [sanitizes] [without scratching] [surfaces<sup>4</sup>]
- Cleans and [disinfects<sup>6</sup>] [sanitizes<sup>7</sup>] in one step
- Daily [Surface<sup>4</sup>] [Disinfectant] [Sanitizer] [Cleaner]
- [Designed] [Built] for [cleaning] [wiping] everyday
- [Designed] [Built] for Everyday [Disinfecting] [Sanitizing] [Cleaning] [Wiping]
- [Disinfect] [Sanitize] [Surfaces<sup>4</sup>] [Daily] [Everyday]
- [Disinfect] [Sanitize][Daily] [Everyday]
- [Disinfecting] [Sanitizing] Formula
- [Disinfecting] [Sanitizing] Wipes

## ANTIMICROBIAL CLAIMS (cont.):

- Disinfecting wipes with scrubbing action
- [Disinfects] [Sanitizes]
- [Disinfects<sup>6</sup>] [Sanitizes<sup>7</sup>] [as it cleans] [and scrubs {*must choose one*:}] [tough [messes][stains]] [[stubborn][dried-on] spots] in one step] [without [a] [the] [that] disinfectant smell]
- Disinfects surfaces<sup>4</sup> by killing [99.9%] SARS-Related Coronavirus 2 [SARS-CoV-2] [USA-WA1/2020] [in one-step<sup>6</sup>]
- Effective against SARS-Related Coronavirus 2<sup>4</sup> [SARS-CoV-2] [USA-WA1/2020] [in 15 seconds]
- [Effective against] [Disinfects] [Kills] [99.9%] SARS-CoV-2<sup>4</sup> [virus]
- [Effective against] [Disinfects] [Kills] [99.9%] SARS-CoV-2<sup>4</sup> virus, the cause of COVID-19
- Effective in the presence of 5% serum contamination
- Eliminate 99.9% of bacteria in [just] 4 minutes[!]
- Eliminates 99.9% [Pseudomonas aeruginosa] [Staphylococcus aureus - Methicillin-Resistant] [Staphylococcus aureus - Community Associated Methicillin-Resistant] [Escherichia coli] [Campylobacter jejuni [Campylobacter]] [Enterococcus faecalis- Vancomycin Resistant] [Salmonella enterica] in [just] 4 minutes[!]
- Everyday [Surface<sup>4</sup>] [Disinfectant] [Sanitizer] [Cleaner]
- [Finally] a wipe that cleans and [disinfects] [sanitizes]
- Great for Everyday [Disinfecting] [Sanitizing] [Cleaning] [Wiping]
- Hospital Disinfectant
- Kills 99.9% of Germs<sup>2</sup> [Bacteria] [Viruses\*] [Bacteria and Viruses\*]
- Kills bacteria [while it cleans]
- Kills Cold & Flu Virus\*.<sup>4</sup>
- [Kills] [Destroys] 99.9% germs<sup>2</sup> [in] [just] [4 minutes]
- Kills coronavirus<sup>4,5</sup> that causes COVID-19
- [Kills] [Effective against] the virus<sup>4,5</sup> that causes COVID-19
- [Kills] [Eliminates] 99.9% SARS-Related Coronavirus<sup>4</sup> [SARS-CoV-2] [USA-WA1/2020] [causative agent of COVID-19] [the virus that causes COVID-19]
- [Kills] [Removes] [Destroys] (*Insert pathogen or pathogens other than avian influenza A from lists on pages 15-16*) [on [pre-cleaned] environmental surfaces<sup>4</sup>]
- [Kills] [Removes] [Destroys] 99.9% of bacteria
- [Kills] [Removes] [Destroys] 99.9% of bacteria, leaves [leaving] surfaces<sup>4</sup> [clean and] disinfected
- [Kills] [Removes] [Destroys] Avian Influenza A H3N2 [and] H5N1 on pre-cleaned environmental surfaces<sup>4</sup>
- Kills Germs<sup>2</sup> [Influenza Type A, the Flu Virus] [Bacteria] [Bacteria and Viruses\*] [Viruses\*]
- [Kills] [Wipe Out] 99.9% of [Germs<sup>2</sup>] [Influenza Type A, the Flu Virus] [Bacteria] [Viruses\*]
- Kills germs<sup>2</sup>
- Kills Salmonella enterica ,Staphylococcus aureus - Methicillin-Resistant & Flu Virus\*.<sup>4</sup>!
- Kills the coronavirus<sup>4,5</sup> that causes COVID-19
- Kills the Flu Virus\*.<sup>4</sup>
- Kills [the] COVID-19 virus<sup>4,5</sup>
- Kills the virus<sup>4,5</sup> that causes COVID-19
- Kills [99.9% of] SARS-CoV-2<sup>4</sup>, which causes COVID-19
- Kills [Wipes Out] 99.9% [of] [Listeria monocytogenes ] [Methicillin-Resistant Staphylococcus Aureus] [Norwalk Virus]
- Leaves surfaces<sup>4</sup> clean and disinfected
- [Proven to] kill[s] the coronavirus<sup>4,5</sup> that causes COVID-19
- [Proven to] kill[s] the virus<sup>4,5</sup> that causes COVID-19
- [Proven to] wipe out<sup>6</sup> 99.9% of the coronavirus<sup>4,5</sup> that causes COVID-19
- Reduce risk of cross contamination between treated surfaces<sup>4</sup>
- Remove [99.9% of] [Bacteria] [Germs<sup>2</sup>] [from] [Kitchen<sup>4</sup>] [Bathroom<sup>4</sup>] [Office<sup>4</sup>] Surfaces<sup>4</sup>
- [Sanitize][Disinfect] [bathroom][sink[s]] [faucet[s]] [toilet[s]] [flush handle][seat] [light switch] [door][handle][knob]
- [Sanitize][Disinfect] the surfaces<sup>4</sup> of [cabinets], [chairs<sup>4</sup>], [counter[s]top[s]], [shower][door[s]][stalls]], [bathtub[s]], [sink[s]], [vanities], [vanity][top[s]], [bathroom][fixture[s]][faucet[s]]
- [Sanitize][Disinfect] the surfaces<sup>4</sup> of [personal protective equipment<sup>4</sup>][PPE<sup>4</sup>][respirators<sup>4</sup>][full face breathing apparatus<sup>4</sup>]
- [Sanitize][Disinfect] [waiting rooms<sup>4</sup>] [public areas<sup>4</sup>]

### ANTIMICROBIAL CLAIMS (cont.):

- [Sanitize][Disinfect] [common] [surfaces<sup>4</sup>][items][:] [such as] [cribs<sup>4</sup>] [tables] [tabletops] [counters] [countertops] [appliances] [sinks] [glazed tiles] [light switches] [door handles] [railings] [telephones] [trash][garbage][can[s]][receptacle[s]][bin[s]]
- The smart [way to] clean [and disinfect] [and sanitize]
- The wipe that cleans [up [stubborn] [stuck-on] messes]
- This product will clean and disinfect hard, non-porous, non-food surfaces.
- Two in one action [cleans and [disinfects<sup>6</sup>] [sanitizes<sup>7</sup>] in one step]
- Wipe Away<sup>6</sup> 99.9% of [Germs<sup>2</sup>] [Influenza Type A, the Flu Virus] [Bacteria] [Viruses\*]
- Wipes out<sup>6</sup> 99.9% of COVID-19-causing coronavirus<sup>4,5</sup>
- Wipes out<sup>6</sup> 99.9% of COVID-19-causing virus<sup>4,5</sup>
- Wipe out<sup>6</sup> 99.9% of germs<sup>2</sup>
- Wipes out<sup>6</sup> 99.9% of the coronavirus<sup>4,5</sup> that causes COVID-19
- Wipes out<sup>6</sup> 99.9% of the virus<sup>4,5</sup> that causes COVID-19
- Wipes out<sup>6</sup> 99.9% of the COVID-19 virus<sup>4,5</sup>
- Wipe Up<sup>6</sup> 99.9% of [Germs<sup>2</sup>] [Influenza Type A, the Flu Virus] [Bacteria] [Viruses\*]
- [With proven] Antimicrobial Action

### SANITIZATION CLAIMS:

- 99.9% effective against [Staphylococcus aureus] [Klebsiella pneumoniae] [Campylobacter jejuni] in [just] 15 seconds[!]<sup>7</sup>
- 99.9% effective against bacteria in [just] 15 seconds[!]<sup>7</sup>
- Kills 99.9% of bacteria in [just] 15 seconds[!]<sup>7</sup>
- Kills 99.9% of {note: choose one or more of the following pathogens} [Staphylococcus aureus] [Klebsiella pneumoniae] [Campylobacter jejuni] in [just] 15 seconds[!]<sup>7</sup>
- Sanitize [commonly touched] surfaces<sup>4</sup> in [just] 15 seconds[!]<sup>7</sup>
- Sanitizing Wipes
- [This product or product name] is an effective sanitizer against [Staphylococcus aureus] [Klebsiella pneumoniae] [Campylobacter jejuni]<sup>7</sup>.

### USAGE CLAIMS:

- For Institutional and Industrial Use
- Multi-purpose
- Multi-surface<sup>4</sup>

### VALUE CLAIMS:

- Bonus Size
- Convenient [size]
- More cleaning in one wipe
- More cleaning power per wipe
- One wipe goes a long way to clean messes
- One wipe can be used to clean messes

### SURFACE SAFETY CLAIMS:

- Non-abrasive
- Non-scratch[ing]
- Not recommended for use on computer or television monitor screens.
- These [wipes] [towelettes] [cloths] will not harm [most] surfaces.
- Will not scratch



**SUBSTRATE CLAIMS:**

- 2 sided wipe
- 2 Sides
- [Cloth-like texture] [Textured] for scrubbing power
- Cloth-like [textured] [strong]
- Cloths [Wipes] quickly remove dirt, spots and smudges
- Dual [action] [purpose] [scrubs] wipes]
- Grooved for [Grime] [Tough Messes] [Grease]
- Improved scrubbing texture
- [Our] toughest wipe ever
- Premoistened
- [Premoistened] [wet] disinfecting [textured] [antimicrobial] [wipes] [towelettes] [cloths]
- [Quilted Texture] [Textured] to [Scrub] [Power] [Fight] Through Tough Messes
- [Special] [Unique] 3-D Texture for Tough Messes
- [Strong] [Thick] wipe
- Strong wipe for Heavy Duty cleaning
- Strong wipe for tougher [jobs] [messes]
- Stronger Wipe for heavy duty cleaning
- [Textured cloth] gets up stubborn stuck on messes
- Textured [cloths] [towelettes] clean floors faster [and easier]
- Textured [Wipe] [cloth] [towelette] [for tough jobs] [for tough cleaning]
- Textured for better [cleaning] [scrubbing] power
- Textured to Pick Up Particles
- The wipe that is [strong] [durable] [thick] [heavy] enough to scrub [and] [clean]
- Thick [wipe], cloth-like texture
- Thicker
- Thicker than an ordinary wipe
- Thicker wipe [cushionyTHICK™]
- Thicker, cloth-like feel for tough messes
- Tough like a towel
- Tough [Textured] Wipes
- [Tough] [Thick] wipe[s] for tough [cleaning] [messes]
- Tough[er] wipe for tough[er] cleaning [jobs]
- [Unique] [Special] [Thick] [Quilted] Texture for Tough [Messes] [Cleaning]
- With [Magic Lock] [Magic Scrub] [Trap n' Lock] [Magic Quilt] fiber[s]
- With a cloth-like 3D texture
- With extra cleaning power [wipes] [sheets] [cloths]
- With [extra] scrubbing power
- With extra strength {*must choose one:*} [wipes] [sheets] [cloths]

*Note to reviewer: A representative graphic of a substrate may be added to the label. Only a graphic of the substrate actually being used can be added to the final printed label.*

**PACKAGING CLAIMS:**

- Better [package] [dispensing]
- Breakthrough package
- [Convenient] [Hassle-free] [One-hand] dispensing
- Dispenses better
- Dispenses Like A Tissue [Tough Like A Cloth [Towel]]
- Dispenses like a tissue, cleans like a cloth
- Easier dispensing
- Easy [dispensing] [Glide Lid]
- Easy dispense [lid] [package]
- Easy dispensing [and] [tough texture] [for the ultimate wipes experience]
- [Easy] [EZ] start
- Easy to [open] [thread] [access lid] [dispense]

### **PACKAGING CLAIMS (Cont.):**

- Easy to use
- Easy-glide dispensing top
- [Eco-shape Canister]
- Energy Efficient Canister
- Fewer rips, bunches, and snags
- [Just like a tissue box] [Tissue box dispensing]
- Just [pull] [pop] wipe and toss.
- [Less Oil Consumption], [Landfill Waste], [Production Energy], [and] [Freight Energy]
- No [more] [pinched fingers] [rips] [tears]
- One at a time [dispensing, like a tissue box]
- One wipe at a time dispensing
- Only use approved refill packs.
- Package breakthrough
- Pop up
- Pop and go
- Pop and Clean
- Portable
- Produced with [Wind] [Solar] Energy
- Recyclable packaging
- Refill [size] [pack] [Refill for **Lonza Disinfectant Wipes Plus 2** container] [tub]
- [Regular] [and] [Everyday] Wipe Pack
- Specially designed package that easily dispenses one at a time

**{Note to reviewer: The following may only be used if the Supplemental Registrant has documentation to support these claims.}**

- [30%] [xx%] Thicker and Quilted Texture [for Tough] [Messes] [Cleaning]
- [30%] thicker wipes
- 100% Cotton Wipe fabric
- Converted with 100% [xx%] [wind] [solar] energy
- [Made with] [xx%] less plastic
- [Made with] [xx%] less plastic [than similar size containers][than previous[ly] used container[s]]
- Package contains xx% recycled materials
- Package contains xx% post-consumer waste
- Package is 100% recyclable
- Packaged with 100% [xx%] [wind] [solar] energy
- Packaging contains xx% [post-consumer waste] [recycled materials]
- [Substrate] [Wipe] [Towelette] [Cloth] composed of [100%] [xx%] recycled materials
- [Substrate] [Wipe] [Towelette] [Cloth] composed of [100%] [xx%] renewable materials
- [Substrate] [Wipe] [Towelette] [Cloth] [material] derived 100% from [wood pulp] [cotton] [cellulose] [recycled cellulose]
- [[The][This] product was] [Produced] [Manufactured] with [100%] [xx%] [wind] [solar] energy
- Wipe fabric made from 100% renewable resources

### **FLOOR MOP CLAIMS:**

- Fits [insert name of mop]

**OTHER CLAIMS:**

- [After use], just toss wipe away [in trash][in garbage].
- Call {*Insert phone number*}
- Comments?
- Contains No Phosphate
- Do not use as a diaper wipe or for personal cleansing.
- Do not use for personal cleansing.
- Fragrance-free {*Note to reviewer: This claim can only be included on the label when a formula with no fragrance is used.*}
- Made in the USA [of] [U.S.] [and [imported] [global] [parts] [components]]
- Phosphate free
- Quality Guaranteed
- Questions?
- Ready to Use
- Save time with [this product or product name][!]
- Saves steps
- Saves Time
- This product contains no [phosphates or] phosphorous [compounds].
- Will not bleach surfaces.

### **Lonza Disinfectant Wipes Plus 2:**

- deliver disinfectant and cleaning performance
- [are disinfectant cleaner that] cleans, disinfects and deodorizes in one labor saving step<sup>6</sup>.
- deodorizes by killing microorganisms [bacteria] that cause offensive odors.
- effectively controls malodors.
- will disinfect, clean and deodorize surfaces<sup>4</sup> in rest rooms and toilet areas, garbage cans and garbage storage areas, and other places where bacterial growth can cause malodors.
- is formulated for use in daily maintenance programs with a balance of detergents and malodor counteractants that deliver effective cleaning, disinfecting and malodor control.
- will not leave grit or soap scum.
- is a [one-step] [hospital] disinfectant<sup>6</sup> that is effective against a broad spectrum of bacteria when used as directed.
- is a proven "one-step" disinfectant<sup>6</sup> which is effective in the presence of 5% serum contamination.
- [Kills] [eliminates] 99.9% of bacteria.
- Kills [eliminates] 99.9% of bacteria
- [help] take the hassle out of dispensing disinfecting wipes. The Easy-Glide Lid dispenses wipes one-at-a-time, like a tissue-box, so you get the number of wipes you want with no pinched fingers, [torn wipes], [or] [jammed lids]. Use it on bathroom surfaces like countertops, door handles, light switches, toilets, sinks, and tubs.

Cross-contamination is of major [housekeeping] concern. **Lonza Disinfectant Wipes Plus 2** have been formulated to aid in the reduction of cross-contamination between treated hard, non-porous surfaces.

### **Use Lonza Disinfectant Wipes Plus 2:**

- in federally inspected Meat & Poultry Plants as a disinfectant on all hard, non-porous surfaces in inedible product processing areas, non-processing areas and / or exterior areas.
- as a disinfectant on hard, nonporous surfaces.
- to clean and disinfect finished floors, sinks and tubs.
- for non-scratch cleaning of showers and tubs, shower doors and curtains, fixtures and exterior toilet bowl surfaces<sup>4</sup>.
- to clean and disinfect hard, non-porous surfaces<sup>9</sup> of personal [safety] [protection] equipment, protective headgear, hard hats, half mask respirators, full face breathing apparatus, gas masks, goggles, spectacles, face shields, silicone rubber or PVC hearing protectors and vinyl covered ear muffs. Rinse all equipment that comes in contact with skin before reuse with clean warm water [about 120°F], and allow to air dry. [Precaution: Cleaning at 120°F temperature will avoid overheating and distortion of the personal [safety] [protection] equipment that would necessitate replacement.
- to clean and disinfect hard, non-porous surfaces of gym equipment, exercise machines, wrestling mats and gymnastic equipment.

[Insert Brand name] is registered in the United States and Trademark Office to [Insert Company Name].

[Insert Brand name] is a registered trademark of [Insert Company Name]

{Note to reviewer: Each entry below also represents a graphic depicting the corresponding area of use. The graphics will only represent individual objects or outsides or insides of buildings as described below. No people, animal, or food will be depicted in graphics.}

**[AREAS OF USE:]**

Use **Lonza Disinfectant Wipes Plus 2** in:

Bathrooms  
Homes [households]  
Kitchens

Dental offices  
Hospitals  
Medical Offices  
Nursing homes

Day care centers  
Nurseries

Bars  
Cafeterias  
Institutional kitchens  
USDA inspected food processing facilities

Colleges  
Correctional facilities  
Dressing rooms  
Exercise facilities  
Factories  
Health clubs

Hotels  
Institutional facilities  
Institutions  
Laundry rooms  
Locker rooms  
Motels  
Prisons  
Public facilities  
Public rest rooms  
Salons  
Schools  
Shower and bath areas  
Sick rooms

Airplanes  
Airports  
Ambulances  
Buses  
Emergency [Police] [EMS] [Fire] [Rescue] vehicles

Ships  
Taxis  
Trailers  
Trains  
Transportation terminals

Non Food Contact Sanitizing Use Areas: Schools, transportations, airplanes, trains, automobiles, office buildings, dairies, meat processing plants, food processing areas, food handling areas, bars, restaurants, healthclubs, gyms, grocery stores, weight rooms, exercise rooms.

{Note to reviewer: Each entry below also represents a graphic depicting the corresponding type of surface. No people, animal, or food will be depicted in graphics. Only exteriors of microwaves and refrigerators will be depicted. Toy graphics will be submitted to Agency for review.}

**[TYPES OF SURFACES:]**

Use **Lonza Disinfectant Wipes Plus 2** on washable hard, nonporous surfaces of:

- |   |  |
|---|--|
| Bathroom fixtures                                       | Toilet seats                                   |
| Bathtubs [Fiberglass]                                   | Toys <sup>3</sup>                              |
| Cabinets  | Tub walls                                      |
| Cages   | Tubs   |
| Chairs  | Tiles, glazed                                  |
| Computer keyboards                                      | Walls  |
| Counters [countertops] [Bathroom] [Kitchen]             |  |
| Cupboards   | Other hard nonporous surfaces made of:         |
| Desks   | ABS  |
| Diaper changing [tables][counters]                      | Acrylic  |
| Diaper pails  | Aluminum, Brass, Chrome,                       |
| Doorknobs   | Finished woodwork                              |
| Equipment tables  | Formica®                                       |
| Faucets   | Glass  |
| Faucet Handles  | Glazed ceramic                                 |
| Floors  | Glazed enameled surfaces                       |
| Finished floors   | Glazed porcelain                               |
| Garbage cans  | LDPE, HDPE                                     |
| Glass   | Metal  |
| Highchairs  | Plastic [such as polystyrene or polypropylene] |
| Lab benches   | Polycarbonate                                  |
| Linoleum  | PVC  |
| Light switches  | Sealed granite                                 |
| Laminate flooring                                       | Sealed marble                                  |
| Refrigerators - exteriors <sup>8</sup>                  | Sealed quartz                                  |
| Refrigerated storage and display equipment <sup>8</sup> | Sealed stone                                   |
| Sealed floors   | Stainless steel                                |
| Showers   | Upholstery- vinyl and plastic                  |
| Shopping cart handles                                   |  |
| Shower [stalls] [walls]                                 |  |
| Sinks [bathroom, kitchen]                               |  |
| Storage areas   |  |
| Stoves <sup>8</sup> [stovetops <sup>8</sup> ]           |  |
| Tables, [picnic tables]                                 |  |
| Tanning Beds  |  |
| Telephones  |  |
| Exterior Toilet bowl surfaces                           |  |

*Formica® is a registered trademark of the Diller Corporation*

[TYPES OF SURFACES:] [cont.]

Use Lonza Disinfectant Wipes Plus 2 on washable hard, nonporous surfaces of:

Non-critical medical device surfaces:	[Medical] [Hospital] Lamps
Amalgamators and dental curing lights	[Medical] [Hospital] Scales
Ambulance equipment surfaces	[Medical] Examining tables
Anesthesia machines and respiratory therapy equipment	Non-critical [hospital] [medical] equipment surfaces
Apheresis machines	Operating room tables and lights
Bed frames	Operatory light switches
Bed rails	Ophthalmoscopes
Beds [Medical] [Hospital]	Otoscopies
Bladder scan	Oxygen hoods
Blood glucose meters	Patient lift equipment
Cardiac gym equipment	Patient monitoring equipment
Crutches	Patient support and delivery equipment
Defibrillators	Physical therapy (PT) equipment surfaces
Dental chairs	Pulp testers and motors
Dental countertops	Pulse oximeter
Dental unit instrument trays	Radiology equipment
Diagnostic equipment	Rescue tools
Dialysis machines	Resuscitators
Dopplers	Slit lamps
Electronic thermometers	Spine back boards
Endodontic equipment such as apex locators	Stands
Gurneys	Stethoscopes
Infant incubators [interior and exterior surfaces of]	Stools
Infant warmers [interior and exterior surfaces of]	Stretchers
Isolettes	Telemetry equipment
IV poles	Tympanic thermometers
IV pumps	Ultrasound monitors
Laboratory equipment and surfaces	Ultra-sound transducers and equipment
Loupes	Ultrasound transducers and probes
	Walkers
	Wheel chairs

*{Note to Reviewer: These statements for claims against enveloped and large, non-enveloped viruses, shall not appear on marketed (final print) product labels.}*

**EMERGING VIRAL PATHOGENS**

This product qualifies for emerging viral pathogen claims per the EPA's 'Guidance to Registrants: Process for Making Claims Against Emerging Viral Pathogens not on EPA-Registered Disinfectant Labels' when used in accordance with the appropriate use directions indicated below.

This product meets the criteria to make claims against certain emerging viral pathogens from the following viral category[ies]:

- Enveloped Viruses
- Large, non-enveloped virus

For an emerging viral pathogen that is a/an...	...follow the direction for use for the following organisms on the label:
Enveloped virus	Feline Calicivirus / Norovirus
Large, non-enveloped virus	Feline Calicivirus / Norovirus

***[Lonza Disinfectant Wipes Plus 2]*** has demonstrated effectiveness against viruses similar to ***[name of emerging virus]*** on ***hard, non-porous surfaces***. Therefore, ***[Lonza Disinfectant Wipes Plus 2]*** can be used against ***[name of emerging virus]*** when used in accordance with the directions for use against Norovirus [Norwalk Virus] on ***hard, non-porous surfaces***. Refer to the ***[CDC or OIE]*** website at ***[pathogen-specific website address]*** for additional information.

OR

***[Name of illness/outbreak]*** is caused by ***[name of emerging virus]***. ***[Lonza Disinfectant Wipes Plus 2]*** kills similar viruses and therefore can be used against ***[name of emerging virus]*** when used in accordance with the directions for use against Norovirus [Norwalk Virus] on ***hard, non-porous surfaces***. Refer to the ***[CDC or OIE]*** website at ***[website address]*** for additional information.



**Lonza Disinfectant Wipes Plus 2** are a one-step [Hospital] disinfectant<sup>6,7</sup> and Bactericidal [tested according to the modified germicidal spray test] in the presence of 5% organic serum against:

{or}

**Lonza Disinfectant Wipes Plus 2** [are effective against] [Kills] [Removes] [Destroys]:

[Bacteria:]

*Pseudomonas aeruginosa* [*Pseudomonas*] [ATCC 15442]

*Salmonella enterica* [*Salmonella*] [ATCC 10708]

*Staphylococcus aureus* [Staph] [ATCC 6538]

*Acinetobacter baumannii* [ATCC BAA-1709]

*Burkholderia cepacia* [ATCC 25416]

*Campylobacter jejuni* [*Campylobacter*] [ATCC 29428]

*Corynebacterium ammoniagenes* [ATCC 6872]

*Enterobacter aerogenes* [ATCC 13048]

*Enterococcus faecalis* [*Enterococcus*] [ATCC 29212]

*Enterococcus faecalis*- Vancomycin Resistant [VRE] [ATCC 51575]

*Escherichia coli* [*E. coli*] [ATCC 11229]

*Escherichia coli* O157:H7 [ATCC 35150]

ESBL *Escherichia coli* – [Extended spectrum beta-lactamase producing *E. coli*] [ATCC BAA-196]

*Klebsiella pneumoniae* [*Klebsiella*] [ATCC 4352]

*Klebsiella pneumoniae* (NDM-1) [New Delhi metallo-beta-lactamase 1] [CDC 1000527]

*Legionella pneumophila* [ATCC 33153]

*Listeria monocytogenes* [ATCC 19117]

*Salmonella schottmuelleri* [*Salmonella*] [ATCC 8759]

*Salmonella typhi* [*Salmonella*] [ATCC 6539]

*Serratia marcescens* [*Serratia*] [ATCC 14756]

*Shigella dysenteriae* [*Shigella*] [ATCC 11835]

*Staphylococcus aureus* - Community Associated Methicillin-Resistant [CA-MRSA] [NRS384] [USA300]

*Staphylococcus aureus* - Community Associated Methicillin-Resistant [CA-MRSA] [NRS123] [USA400]

*Staphylococcus aureus* - Methicillin-Resistant [MRSA] [ATCC 33592]

*Staphylococcus aureus* - Multi-Drug Resistant [resistant to tetracycline [Tc], penicillin [Pc], streptomycin [Sm] and erythromycin [Em] and susceptible to chloramphenicol [Cm] *in vitro*] [ATCC 14154]

*Staphylococcus aureus*-Vancomycin Intermediate Resistant – [VISA] [CDC HIP 5836]

*Streptococcus pyogenes* [Strep] [a cause of scarlet fever] [ATCC 14289]

*Vibrio cholerae* [ATCC 14035]

[Viruses:]

\*Hepatitis B Virus [HBV] [7/31/07 strain of duck Hepatitis B virus (DHBV), Hepadnavirus]

\*Hepatitis C Virus [HCV] [Oregon C24v-genotype 1 Strain]

\*Herpes Simplex Virus Type 1 [HSV-1 Sabin]

\*Herpes Simplex Virus Type 2 [HSV-2 Sabin]

\*HIV-1 [AIDS Virus] [Strain HTLV IIIB]

\*Human Coronavirus [ATCC VR-740, Strain 229E]

\*Influenza Type A Virus [Influenza] [[the] Flu [Virus]] [A/11/1978]

\*Influenza A Virus H1N1 [ATCC VR-1469, Strain A/PR/8/34]

\*Influenza A Virus (H7N9) [A/Anhui/1, Centers for Disease Control and Prevention CCID/NCIRD/ID/MVVB]

\*Norwalk Virus [Feline Calicivirus] [Norovirus] [ATCC VR-782, F9 strain]

\*Respiratory Syncytial Virus [RSV] [ATCC VR-26, Strain Long]

\*Rotavirus [ATCC VR-2018, WA strain]

\*SARS Associated Coronavirus [SARS] [cause of Severe Acute Respiratory Syndrome] [CDC#200300592, ZeptoMetrix]

\*SARS-Related Coronavirus 2 [SARS-CoV-2] [cause of COVID-19] [strain 1/2020, Source: BEI Resources, NR-52281]

\*Vaccinia Virus [ATCC VR-119, WR strain]

[Animal Viruses:]

Avian Influenza Virus H3N2 [ATCC VR-2072]

Avian Influenza Virus H5N1 [CDC # 2006719965]

Canine Distemper Virus [ATCC VR-128, Strain Lederle]

Feline Calicivirus [ATCC VR-782, F9 strain]

Newcastle's Disease Virus [ATCC VR-108 Strain B1, Hitchner or Blacksburg]

Pseudorabies Virus [ATCC VR-135, Strain Aujeszky]

*{Note to reviewer: Representative graphic of wipe tub and/or hand pulling out wipe fabric may be added to the label}*

*{For canister}*

**To Open Package:**

Remove cover. Pull up [towelette] [wipe] [cloth] corner from center of roll. Thread through hole in the cover.

Replace cover. Open center cap on cover to remove wipe. When not in use [When not using], close center cap [securely] to prevent moisture loss.

*or {For carton or tub}*

**To Open Package:** Open cover and slowly. Remove [Pull out] [wipe] [towelette] [cloth] as needed. To retain moisture, reseal [carton] [tub] by firmly closing [carton or tub] cover.

*or*

**To Open Package:** [Remove package seal[s]] [Remove safety seal[s]] [Flip] Open lid. To remove first wipe [sheet] [wet cloth] [cloth] pull up on wipe and remove wipe through [dispensing] opening [wavy dispensing opening] [orifice]. [The next wipe will pop up automatically]. [Always] close [snap] lid securely between uses [to retain moisture].

*or*

**To Open Package:** [Remove package seal[s]] [Remove safety seal[s]]. Open [Flip open lid [package]]. To start [remove] [first] wipe [sheet] [wet cloth] take the edge of wipe from large opening to the small dispensing opening and pull up. [The next wipe [sheet] [wet cloth] [cloth] will pop up automatically.] [Always] close [snap] lid securely between uses [to retain moisture].

*or*

**To Open Package:** Open Lid. To start wipes, pull up on wipe and move wipe into the small dispensing opening [orifice] [aperture] [hole] [wave] and [pull sheet up to remove wipe] remove wipe. [The next wipe [sheet] [wet cloth] will pop up automatically]. [Always] close [snap] lid securely between uses [to retain moisture].

*or*

**To Open Package:** Flip open[up] the lid[cover][top][cap][dispensing lid]. Thread the wipe [first wipe][cloth][first cloth][sheet] through the dispensing lid and pull up to remove wipe from package. The next wipe [sheet][cloth] pops up automatically. Close lid securely between uses to retain moisture[prevent moisture loss].

*or*

**To Open Package:** Press the three [3] ridges with your thumb and push up on the cap[top][lid] to open[lid]. To remove wipe [sheet] [wet cloth] [cloth] [towelette] pull up on wipe and remove wipe through [dispensing] opening [wavy dispensing opening] [orifice]. [The next wipe will pop up automatically].

*or*

**To Open Package:** Press the three [3] ridges with your thumb and push up on the cap[top][lid] to open[lid]. Thread the wipe [sheet] [wet cloth] [cloth] [towelette] through the dispensing lid and pull up to remove wipe from package. The next wipe will pop[pull] up automatically. [Always] Close [snap] lid securely between uses [to retain moisture].

*or*

**To Open Package:** Press the three [3] ridges with your thumb and push up on the lid to open. Thread the wipe through the dispensing lid and pull up to remove wipe from package. The next wipe will pop up automatically. Close lid securely between uses to retain moisture.

or

**To Open Package:** Push the area marked ["Press"] ["Push"] ["Press Here"] ["Push Here"] with your thumb and push up on the lid to open. Thread the wipe through the dispensing lid and pull up to remove wipe from package. The next wipe will pop up automatically. Close lid securely between uses to retain moisture.

or

**To Open Package:** Open dispenser and top of bag. Pull out the first wipe approximately 6 to 8 inches from the center of the roll. Place the entire bag inside of dispenser. Thread the wipe through the opening on the dispenser lid. Close the lid to retain moisture.

or

**To Open Package:** Open cover and slowly peel back label. Remove cloth as needed. To retain moisture, close cover.

or

**To Open Package:** Open cover and slowly peel back label. Remove wipe as needed. To retain moisture, re-close by firmly pressing and close tub cover.

or {For refill, pouch or bag}

**To Open Package:**

[Slowly] peel back the label [open seal]. Remove [Pull out] [wipe] [towelette] [cloth] as needed. To retain moisture, reseal [pouch] [bag] by firmly pressing seal back on the [pouch] [bag]

or

**To Open Package:**

[Tear] [Cut] open wipe [pouch] [bag] [along dotted line]. Remove canister lid and place [bag with] roll into empty canister. Locate wipe [edge] at center of roll and thread wipe through canister opening [at angle]. Do not push finger through opening. Replace lid on canister and close tightly. Finish pulling wipe through opening. Wipes will feed automatically

or {For the Travel Pack size}

**To Open Package:** Slowly peel back label. [Pull out] [Remove] [wipes] [towelettes] [cloths] as needed. Reseal label to retain moisture.

or **To Open Package:** Open ziplock [Tear edge of pack]. [Pull out] [Remove] [wipes] [towelettes] [cloths] as needed. Reseal ziplock to retain moisture.

or {For the single cloth or sample pack}

**To Open Package:** Tear [pouch] open [at top edge of pouch] [at tear notch] [along dotted line] [where indicated] [edge of pack]. [Pull out] [Remove] [Wipe] [Towelette] [Cloth].

{For product supplied in a single use pouch with a folded towellete, include the following:}

Unfold [Wipe] [Towelette] [Cloth]

## DIRECTIONS FOR USE:

It is a violation of Federal law to use this product in a manner inconsistent with its labeling.

Do not use as a diaper wipe or for personal cleansing.

This is not a baby wipe!

Do not flush [in toilet].

For plastic and painted surfaces, spot test on an inconspicuous area before use.

[This product or product name] will not harm most surfaces: including acrylic, sealed fiberglass and vinyl.

## TO CLEAN AND DEODORIZE:

Wipe hard, non-porous surface with [wipe] [towelette] [cloth] [sheet]. Let air dry. Discard used [wipe] [towelette] [cloth] [sheet] in trash. Do not flush [in toilet].

## [TO] CLEAN [CLEANING] AND DISINFECT [DISINFECTION / VIRUCIDAL\*] DIRECTIONS:

Wipe hard, nonporous surface with [wipe] [towelette] [cloth] [sheet] until surface is visibly wet. [Use enough wipes to visibly wet surfaces.] [Use [enough] [extra] wipes to keep surfaces visibly wet for 4 minutes.] [Keep surfaces visibly wet for 4 minutes.] [Wipe surface and let it remain visibly wet for 4 minutes.] Allow surface to remain visibly wet for 4 minutes. *{Note to reviewer: if using claims for Norwalk Virus [Feline Calicivirus] [Norovirus] and/or Rotavirus, the following sentence will be required:}* **[For [Norwalk Virus] [Feline Calicivirus] [Norovirus]] [and] [Rotavirus]**, treated surfaces must remain visibly wet for 10 minutes. *{Note to reviewer: if using claims for SARS-CoV-2, the following sentence may be used:}* **[For SARS-CoV-2]**, treated surfaces must remain visibly wet for 15 seconds. [Let air dry.] [[Let] [Permit surface to [air] dry.]

If surfaces are visibly dirty, clean first with another [wipe] [towelette] [cloth] [sheet] before disinfecting.

Discard used [wipe] [towelette] [cloth] [sheet] in trash. Do not flush [in toilet].

[Spot test on an inconspicuous area before use.]

**For bacteriostatic use: Lonza Disinfectant Wipes Plus** will effectively inhibit the growth of odor-causing bacteria when applied to hard, non-porous surfaces. For visibly soiled surfaces, clean visible dirt [from the surface] first. Wipe surface and let it remain visibly wet for 4 minutes. Repeat treatment every [24 hours] [48 hours] [72 hours], or more often if new growth appears.

**For mold and mildew stain control: Lonza Disinfectant Wipes Plus 2** will effectively inhibit the growth of mold and mildew and the odors caused by them when applied to hard, non-porous surfaces. Wipe surface and let it remain visibly wet for 4 minutes. Repeat treatment every seven days, or more often if new growth appears.

## \*KILLS HIV AND HBV AND HCV ON PRE-CLEANED ENVIRONMENTAL SURFACES / OBJECTS

**PREVIOUSLY SOILED WITH BLOOD / BODY FLUIDS** in health care settings or other settings in which there is an expected likelihood of soiling of inanimate surfaces / objects with blood or body fluids, and in which the surfaces / objects likely to be soiled with blood or body fluids can be associated with the potential for transmission of Human Immunodeficiency Virus Type 1 [HIV-1] [associated with AIDS] or Hepatitis B Virus [HBV] or Hepatitis C Virus [HCV].

### Special Instructions for Cleaning and Decontamination against HIV-1 or HBV or HCV on Surfaces / Objects Soiled With Blood / Body Fluids.

**Personal protection:** Clean-up must always be done wearing protective gloves, gowns, masks and eye protection.

**Cleaning procedure:** Blood and other body fluids containing HIV or HBV or HCV must be visibly cleaned from surfaces and objects before application of **Lonza Disinfectant Wipes Plus 2**. **Lonza Disinfectant Wipes Plus 2** [this product] [wipe] [towelette] [cloth] [sheet] can be used for this purpose.

**Contact time:** Leave surface visibly wet for 1 minute [60 seconds] for HIV-1. Use appropriate contact time as listed on label for all other viruses[,] [and] bacteria claimed.

**Disposal of infectious material:** Blood, body fluids, cleaning materials and clothing must be disposed of according to local regulations for infectious waste disposal.

*{Note to reviewer: If Avian Influenza A is listed on the label the following statement is required.}*

This product is for use on hard, nonporous surfaces not conducive to treatment by immersion or excess liquid against Avian Influenza A.

*Note for reviewer: For labels that list medical premises and metal and / or stainless steel surfaces, one of the following statements must be used:}*

This product is not to be used as a terminal sterilant / high level disinfectant on any surface or instrument that [1] is introduced directly into the human body, either into or in contact with the bloodstream or normally sterile areas of the body, or [2] contacts intact mucous membranes but which does not ordinarily penetrate the blood barrier or otherwise enter normally sterile areas of the body. [This product may be used to preclean or decontaminate critical or semi-critical medical devices prior to sterilization or high level disinfection.]

*{or}*

This product is not for use on medical device surfaces.

**SANITIZING [DEODORIZING]:**

To sanitize [deodorize] hard, non-porous, non-food contact surfaces, wipe surface, using enough [wipes] [towelettes] [cloths] to allow treated surface to remain visibly wet for 15 seconds for *Staphylococcus aureus* [ATCC 6538], *Klebsiella pneumoniae* [ATCC 4352], and *Campylobacter jejuni* [ATCC 29428]. Let surface dry. For visibly soiled surfaces, clean visible soil first.

**DIRECTIONS FOR FLOOR WIPE USE:**

It is a violation of Federal Law to use this product in a manner inconsistent with its labeling.

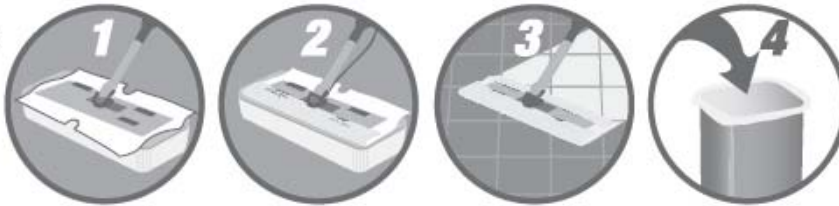
**TO CLEAN AND DEODORIZE:** Wipe floor with wipe. Let air dry. Discard used wipe in trash. Do not flush [in toilet].

**TO CLEAN AND DISINFECT:** For visibly soiled surfaces, clean visible dirt [from the surface] first. [Attach a premoistened wipe to the mop head using the [velcro] [fasteners] provided.] Visibly wet floor with wipes. [Change wipe when soiled.] or [Replace with a fresh wipe once visibly soiled or no longer visibly wetting the surface.] Allow surface to remain visibly wet for 4 minutes. Let air dry. On average, one wipe will clean [10] [x] square feet of floor. For a larger area you may need to use more than one wipe. Discard used wipe in trash. Do not flush [in toilet]. Rinse food contact surfaces with clean, potable water after disinfecting. Do not use to disinfect dishes, glassware or utensils. Do not use as a diaper wipe or for personal cleansing. Contact manufacturer of wood floors prior to use.

[Spot test on an inconspicuous area before use.]

Keep container flat and lid securely closed to keep cloths moist.

Use on  
mop  
head.



*[Optional representative graphic]*

TO OPEN:

1. Cut off top of pouch with scissors.
2. Remove wipes from pouch.
3. Place wipes in plastic tub.
4. Discard empty pouch into trash.

TO USE WITH MOP:

1. Unfold top wipe in tub by pulling sides of the cloth over edges of tub.
2. Place sweeper on head.
3. Wrap wipe around head of sweeper.
4. Push edges of wipe into top of sweeper head.
5. Begin wiping. No rinsing required.
6. After use, remove soiled wipe and discard in trash. Do not flush [in toilet].7

*{Note to reviewer: Nonrefillable container}*

## **STORAGE AND DISPOSAL**

Store in original container in areas inaccessible to children. Keep securely closed. Nonrefillable container. Do not reuse or refill this container. Discard empty container in trash or recycle [if available].

*{Note to reviewer: Refillable container}*

## **STORAGE AND DISPOSAL**

Store in original container in areas inaccessible to children. Keep securely closed. Refillable container. [Reuse] [Refill] empty container only with **Lonza Disinfectant Wipes Plus 2** [refills]. Do not reuse this container except as described. If not refilling, discard empty container in trash or recycle [if available].

---

Footnotes:

<sup>1</sup> Includes weight of absorbent wipe.

<sup>2</sup> For qualified claims insert some pathogens from pages 15-16.

<sup>2</sup> **Note to reviewer:** If a supplemental label is using the “**Germ**s” claim, per the EPA Guidance on use of the term “Germ

s” in order to make a qualified “germ” claim the supplemental label must be a broad spectrum disinfectant and list additional claims against Viruses and must bear disinfectant directions. The front panel of the label for a qualified claim must contain a designator [such as \*\*] that refers the user to the qualified statements that describes the type of germ the product is efficacious against

<sup>3</sup> Rinse toys with clean, potable water after disinfecting.

<sup>4</sup> On hard, non-porous, non-food surfaces

<sup>5</sup> SARS-CoV-2

<sup>6</sup> When used according to the disinfection directions

<sup>7</sup> When used according to the sanitization directions

<sup>8</sup> Allow the surface to adjust to room temperature before disinfection

<sup>9</sup> External surfaces only

{PACKET LABEL TO BE USED WITH MASTER CONTAINER LABEL}

## LONZA DISINFECTANT WIPES PLUS 2

Active Ingredients:

Octyl decyl dimethyl ammonium chloride.....	0.0909%
Dioctyl dimethyl ammonium chloride.....	0.0364%
Didecyl dimethyl ammonium chloride.....	0.0545%
Alkyl (C <sub>14</sub> , 50%; C <sub>12</sub> , 40%; C <sub>16</sub> , 10%) dimethyl benzyl ammonium chloride .....	0.1212%
Other Ingredients:.....	<u>99.6970%</u>
Total.....	100.0000% <sup>1</sup>

<sup>1</sup> Includes weight of absorbent wipe.

**KEEP OUT OF REACH OF CHILDREN**

**CAUTION [PRECAUCIÓN]**

See outer container for Precautionary Statements and Use directions

DISPOSAL: Dispose [wipe] [towelette] [Cloth] in trash after use. Discard empty [pouch] [packet] in trash.

EPA. Reg. No. 6836-340

EPA. Est. No. (insert EPA Est. No. here)

Net Contents:

Net Weight:

[optional - wipe dimensions:] X x X [inches] [in.]

Arxada, LLC

412 Mount Kemble Avenue

Suite 200S

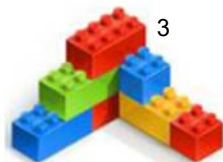
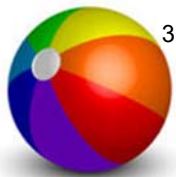
Morristown, NJ 07960



{Note to reviewer: The following are optional graphics. The graphics may be presented as seen below or may differ slightly in graphic design but not intent on the market container label. Please refer to Note 3 on page 21 regarding toys. Any final printed label containing an EPA-approved toy graphic will be required to include the text of footnote 3 about rinsing.}



{Note to Reviewer: Similar representative graphics may be added for the final printed label}



{Note to reviewer: The following is an optional graphic that will be used to illustrate the scent.}



{Note to reviewer: The following is considered optional graphics and marketing language.}

{Note to reviewer. Allowed on back or side panel only.}



[NSF Listed]  
(Insert 6-Digit NSF Listing Number here)



{Note to reviewer: The following are optional graphics that may be used to illustrate non-public health bacteriostatic claims for odor-causing bacteria.}





### Preparing Material for Recycling

Information is provided to ensure the proper steps are taken to effectively recycle materials.

Rinse & Insert Lid	Empty & Replace Cap
Empty Before Recycling	Rinse Before Recycling
Rinse & Replace Lid	Recycle If Clean & Dry
See Website For Cap	Remove Label Before Recycling
Empty & Discard Sprayer	Empty & Reattach Sprayer
Empty & Discard Pump	Empty & Reattach Pump

### The Multi-Component Labels

We want to be sure that you know how to recycle your whole package, not just a part of it! For a How2Recycle label like the one at right, each "tile" represents a different part of the package. This is really helpful for when you're trying to know how to recycle different parts of your package. How2Recycle labels are intended to be read left to right, based on which part of the packaging you encounter first.



### How2Recycle

Information and locational instructions let you know if an item can be recycled traditionally or by other means.

Widely Recycled	Limited Recycling <small>* Not recycled in all communities</small>
Not Yet Recycled	Store Drop-Off

PAPER BOX	PLASTIC WRAP	PLASTIC TRAY

\*Not recycled in all communities

how2recycle.info



### Type of Recyclable Material

Lists what type of material the packaging is made from.

PLASTIC	PAPER
METAL	COATED PAPER
GLASS	MULTI-LAYER



### Lists Recyclable Parts of Packaging

Information on what parts of the packaging needs to be recycled in this specific way.

BOTTLE	TRAY
INSERT	BOX
BAG	WRAP
CAN	FILM
POUCH	

{RECYCLING LOGO: The below graphics can be used to build a recycling logo. Any combination of top, middle, material, and bottom section can be used to build the logo. A recycling logo is optional and may be presented as shown below or may differ slightly in graphic design but not intent on the final marketed product label.}

{TOP SECTION:}



{MIDDLE SECTION:}



{MATERIAL SECTION:}



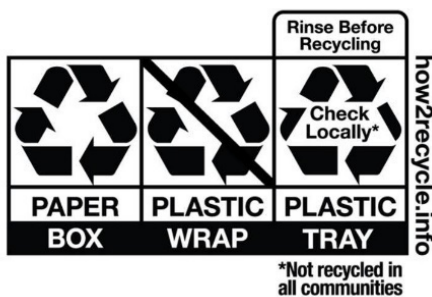
{BOTTOM SECTION:}

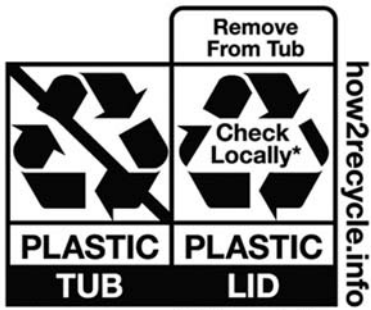


{OPTIONAL TEXT:}

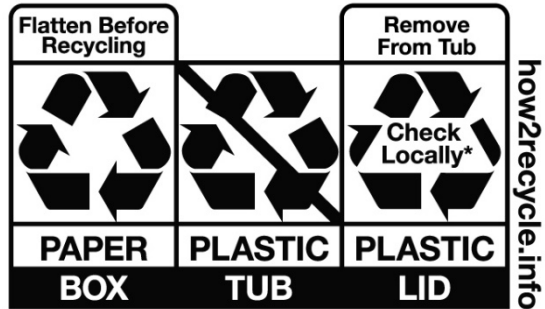
\*Not recycled in all communities  
[how2recycle.info](http://how2recycle.info)

{Examples of final logos built from above sections:}





\*Not recycled in all communities



\*Not recycled in all communities



\*NOT RECYCLED IN ALL AREAS



**THE FOLLOWING SECTIONS CONTAIN PROPRIETARY  
LANGUAGE AND GRAPHICS.**

**THESE SECTIONS ARE ONLY AVAILABLE FOR  
SUPPLEMENTAL REGISTRANTS APPROVED FOR ITS USE.**



{Note to reviewer: The following are considered optional proprietary graphics and claims.}  
{Section 1}



**Cleans. Disinfects. Guaranteed.**  
Return the package and the receipt  
for replacement or money back.

1-877-505-2267 or visit us online at [walmart.com](http://walmart.com)



**Great Quality. Great Price.  
Guaranteed.**

Our guarantee is our promise that you'll be fully  
satisfied with the quality of every Great Value product.  
If for any reason you aren't happy, we'll replace it  
or return your money. Whichever you prefer.  
All you need is the package. It's that simple. Guaranteed.

Tell us what you think... 1-877-505-2267  
or online at [walmart.com/greatvalue](http://walmart.com/greatvalue)



**Great Quality. Guaranteed.**  
Return the package and the receipt  
for replacement or money back.

1-877-505-2267 or visit us  
online at [walmart.com](http://walmart.com)



**Great Quality. Guaranteed.**  
Return the package for  
replacement or money back.  
1-877-505-2267 or visit us  
online at [walmart.com](http://walmart.com)



{Note to reviewer: The following are considered optional proprietary graphics and claims.}  
{Section 2}





*{Note to reviewer: The following are considered optional proprietary graphics and claims.}*  
**{Section 3}**



{Note to reviewer: The following are considered optional proprietary graphics and claims.}  
{Section 4}



{Note to reviewer: The following is an optional graphic that will be used to illustrate the scent.}



**CLEANING CLAIMS:**

*{Note to reviewer: The following are considered optional proprietary graphics and claims.}*

**{Section 4}**

- Introducing
- Introducing new
- New and Improved!
- New [Convenient] [Amazing] Package
- [25%] [30%] [50%] more grease cleaning power
- [A] Clean you can trust
- [All] [Multi-purpose] kitchen [everyday] [daily] [touch-up] [cleaning]
- Clean with just a wipe or a touch up
- Cleaning
- Cleaning just got a whole lot easier
- Clean surfaces at your fingertips
- Cleans
- Cleans [grease] better than ever
- Cleans faster because the [scrubbies] [texture] removes [stubborn] [stuck on] [dirt] [messes]
- Cleans more than ever
- Cleans things you never thought a wipe could
- Cleans to a [Sparkle] [Shine]
- Cleans what you can't see
- Convenient
- Cuts through [tough] [dirt] [stains] [grime] [soils] [dried on stains] [dried on soils]
- Cuts Through [Tough] [Messes] [Grease] [Grime]
- [Everyday] [Regular] Cleaning
- [Everyday] [Regular] Wiping
- Extra Power for your tough cleaning jobs
- Extra Power wipe for cleaning extra tough [jobs] [messes]
- For a Powerful Clean
- For everyday messes
- Gets up stuck-on messes [so you don't have to get on hands and knees]
- Greasy messes
- [Great] [Designed] [Built] [Tough] [Textured Design] for your Toughest Messes
- [Great] [Designed] [Built] for Tough [Messes] [Cleaning]
- [Great] for [Spring] [Home] [Kitchen] [Bathroom] [Dorm] [Office] [Cart] [Car] Cleaning
- [Great] for Cleaning Your [Home] [Kitchen] [Bathroom] [Room] [Dorm] [Office] [Cart] [Car]
- Great for Cleaning a Classroom
- Leaves your [house] [bathroom] [kitchen] fresh and clean
- Life doesn't stop for messes, [Wipe] [Clean] it up
- Life is Messy, [Wipe] [Clean] it up
- [Long lasting] [lasts a long time] [goes further] [last longer]
- More scrubbing power
- No more need to get on your hands and knees to [scrub] [or clean] stubborn spots.
- Now [2x] [3x] [4x] [5x] the [grease] cleaning power
- Now cleaning is [faster] [easier] than [ever] [before]
- Now cleans better on grease
- Powerful cleaner for kitchen and bath

## **CLEANING CLAIMS (cont.):**

*{Note to reviewer: The following are considered optional proprietary graphics and claims.}*

### **{Section 4}**

- Powers through tough messes all over the house
- Removes the grime to give you more time [alt: Removes the grime so you have more time]
- Scrub-N-Wipe[s]
- Scrubs and cleans better than ever
- Scrubs and cleans like no other [wipe] [cloth]
- Sticky messes
- The convenient way to keep your home looking “just cleaned”
- The wipe to use when you don’t have much time
- Tough Cleaning at your Fingertips!
- Tough cleaning without the tough cleaning smell
- Tough Enough to Clean a Classroom
- Tough enough to do the bigger cleaning jobs.
- Traps & locks away [dirt] [grease] [messes] [crumbs] [hair] [lint] [dust] [dirty greasy messes]
- Traps and locks away dirt
- Traps and locks grease and grime
- Use [daily] to clean bathroom soils such as soap, soap scum, toothpaste, hair spray, hair gel, cosmetics, shaving cream, hand or body lotion.
- Wipe down your seat. Bring [wet] [wipes] [or] [handi-wipes] to wipe down the [arm rests] [window areas] [seatbelt clasps] [and] [tray table] where you’ll be sitting.
- Wipes Away [Tough] [Everyday] [Messes] [Grease] [Grime]
- Wipes Out [Tough] [Everyday] Messes
- Wipes Out [Tough] [Everyday] Grease
- Wipes Out [Tough] [Everyday] Grime
- Wipes Through [Tough] [Everyday] [Messes] [Grease] [Grime]
- Wipes to a [Clean] Shine [Sparkle]
- Wipes Up [Tough] [Everyday] [Messes] [Grease] [Grime]

## **CLEANING AND ODOR ELIMINATION CLAIMS:**

- For a cleaner, fresher [home] [house], great for [all around] the [house] [home] [kitchen] [bath]
- For a long lasting scent experience
- Fresh, clean scent
- Light, clean scent
- Long lasting scent
- Powers through odor
- Tough on odor
- Wipes out odors
- [With a] [fresh] [clean] [citrus] [lemon] fragrance

## **ANTIMICROBIAL CLAIMS**

- All around the house<sup>4</sup> [disinfecting] [cleaning formula]
- Clean and [Disinfect] [Sanitize] from Classroom to Playground [and everything in between<sup>4</sup>]
- [Clean and] [disinfect] [sanitize] [commonly touched] [household] surfaces<sup>4</sup>
- Cuts [tough] grease, kills bacteria
- [Disinfect] [Sanitize] [Surfaces<sup>4</sup>] [Your House<sup>4</sup>] [Your Kitchen<sup>4</sup>] [Your Bathroom<sup>4</sup>] [Daily] [Everyday]
- [Disinfect] [Sanitize] [Your Desk<sup>4</sup>] [Your Office<sup>4</sup>] [Your Room<sup>4</sup>] [Daily] [Everyday]
- Effective in sanitizing [your][household<sup>4</sup>][kitchen<sup>4</sup>][bathroom<sup>4</sup>][surfaces<sup>4</sup>]
- Effectively [disinfects] [sanitizes] common household surfaces<sup>4</sup>
- Remove [99.9% of] [Bacteria] [Germs<sup>2</sup>] [from Your] [Home<sup>4</sup>] [Kitchen<sup>4</sup>] [Bathroom<sup>4</sup>] [Office<sup>4</sup>] Surfaces<sup>4</sup>
- Sanitize [commonly touched] [household] surfaces<sup>4</sup> in [just] seconds[!]
- [Sanitize][Disinfect] [airplane][airliner] [tray[s]] [tray table[s]]

## ANTIMICROBIAL CLAIMS (cont.):

{Note to reviewer: The following are considered optional proprietary graphics and claims.}

### {Section 4}

- [Sanitize][Disinfect] any room in the house
- [Sanitize][Disinfect] [baby][children's] toys<sup>3</sup>
- [Sanitize][Disinfect] [bathroom<sup>4</sup>][kitchen<sup>4</sup>] [sink[s]] [faucet[s]] [toilet[s]] [flush handle][seat] [light switch] [door][handle][knob]
- [Sanitize][Disinfect] hard, non-porous surfaces of [camping][hiking][boating] equipment<sup>4</sup>
- [Sanitize][Disinfect] [cell][mobile][phones]
- [Sanitize][Disinfect] [computers[s]][keyboards] [touchpads] [mouse]
- [Sanitize][Disinfect] [daycare][childcare] [facilities<sup>4</sup>]
- [Sanitize][Disinfect] [desk tops] [work tables] [work areas] [school desks] [shared equipment<sup>4</sup>]
- [Sanitize][Disinfect] [hotel][motel][public][shared] [TV][television[s]] [remote control[s]][remote[s]] [telephone[s]][phone[s]] [computer[s]][keyboard[s]] [fax machine[s]]
- [Sanitize][Disinfect] [shopping][grocery] cart[s] [handle[s]]
- [Sanitize][Disinfect] the hard, non-porous surfaces<sup>9</sup> of [personal protective equipment][PPE][respirators][full face breathing apparatus][gas masks][goggles][face shields][hearing protection][ear covers][safety ear muffs][helmets][protective head gear][hard hats]
- [Sanitize][Disinfect] the hard, non-porous surfaces of [sports][sporting][gym][athletic][workout] [equipment][machines]
- [Sanitize][Disinfect] the hard, non-porous surfaces of [wrestling][gymnastic][gym][athletic][yoga][tumbling] [mats][pads]
- [Sanitize][Disinfect] the [interior][exterior] of [common] [household][kitchen] appliances
- [Sanitize][Disinfect] [your][common] [household] [surfaces<sup>4</sup>][items][:][such as] [high chairs<sup>4</sup>] [booster seats<sup>4</sup>] [strollers<sup>4</sup>] [car seats<sup>4</sup>] [cribs<sup>4</sup>] [tables] [tabletops] [counters] [countertops] [appliances] [sinks] [glazed tiles] [light switches] [door handles] [railings] [telephones] [trash][garbage][can[s]][receptacle[s]][bin[s]]
- The convenient way to [disinfect] [sanitize] your household surfaces<sup>4</sup>

### USAGE CLAIMS:

- For Homes, Institutional and Industrial Use
- For household hard, nonporous surfaces [all around the house] indoor and outdoor
- For use [at home], [away from home], [in public places] [on the go]
- [Send] [Bring] [Wipes] [Me] to School
- Specially formulated for use in the [kitchen] [bathroom]

### VALUE CLAIMS:

- [2] [Two] [1] [One] For You [1] [One] For School
- [Assorted] [Mixed] [Special] [Variety] [Multiple] [Multi] [Canister] [Bundle] [Pack]
- Back to School [Variety] [Special] [Canister] [Bundle] [Pack]
- Get more cleaning done with one wipe
- Guaranteed to clean longer
- Guaranteed you'll use fewer wipes to clean more
- Large Size, Small Size, Bonus Pack
- [Special] School [Variety] [Canister] [Bundle] [Pack]
- Spring Cleaning [Special] [Value] [Bonus] [Canister] Pack
- Travel [Size] [pack]
- [2] [Two] Free Cloths
- Value Size
- Value Pack
- Variety Pack
- XX% More [Free] Wipes, Bonus Size, [Bonus] [Free] [27-ct] [35-ct] [XX-ct] Wipes, XX for the Price of YY.

### FLOOR MOP CLAIMS:

- Fits Lysol® Quick Clean & Swiffer® Tools.
- Fits Swiffer®
- Fits Swiffer® Mop-Head
- Fits Swiffer® or Pledge Grab-It® Mop Heads
- For Mopping

{Note to reviewer: The following are considered optional proprietary graphics and claims.}

**{Section 4}**

LYSOL® is a registered trademark of Reckitt Benckiser Inc.

SWIFFER® is a registered trademark of the Proctor & Gamble Company

PLEDGE GRAB-IT® is a registered trademark of S.C. Johnson & Son Inc.

**OTHER CLAIMS:**

- Cleaning Advice? Visit [www.mrclean.com](http://www.mrclean.com)
- If you are not completely satisfied with this product, return it for a refund or replacement.

**Lonza Disinfectant Wipes Plus 2:**

- Kills 99.9% of bacteria.
- help you accomplish things you never thought a wipe could do
- [wipes] [cloths] [sheets] help you to accomplish things you never thought a wipe could do
- [help] take the hassle out of dispensing disinfecting wipes. The Easy-Glide Lid dispenses wipes one-at-a-time, like a tissue-box, so you get the number of wipes you want with no pinched fingers, [torn wipes], [or] [jammed lids]. Plus they kill bacteria to keep your [family's] home [clean]. Use it on bathroom and kitchen surfaces like countertops, appliances, door handles, light switches, toilets, sinks, and tubs.
- are designed for your toughest tasks. They are [thick and strong] [thicker and stronger] to stand up to [tough] [your toughest] messes, and they have a cloth-like texture for extra scrubbing power. Plus they kill bacteria to [help] keep your [family's] [home] [clean]. Try it [them] on [your] tough [toughest] messes in the kitchen and bathroom, like baked-on grease on your stove [top]<sup>8</sup>, sticky messes on your counters, and built-up grime on your bathroom sinks.

Cross-contamination is of major [housekeeping] concern. **Lonza Disinfectant Wipes Plus 2** have been formulated to aid in the reduction of cross-contamination between treated surfaces in the home, schools, institutions and industry.

Use **Lonza Disinfectant Wipes Plus 2** in (kitchens, bathrooms and other household areas):

Children's room	Athletic facilities	Camp grounds
Living room	Barber shops	Play ground equipment
Convenience stores	Business and office buildings	Boats
Food processing plants	Family Rooms [Dens]	Campers
Food storage areas	Playrooms	Cars
Restaurants		Mobile homes

Non Food Contact Sanitizing Use Areas: Homes, Schools, transportations, airplanes, trains, automobiles, office buildings, dairies, meat processing plants, food processing areas, food handling areas, bars, restaurants, healthclubs, gyms, grocery stores, weight rooms, exercise rooms.

Use **Lonza Disinfectant Wipes Plus 2** on washable hard, nonporous surfaces of:

Appliances  
Car seat  
Microwave ovens – exteriors<sup>8</sup>  
Non-Wooden Outdoor [patio] furniture except cushions and wood frames

{Note to reviewer: a customer-specific, proprietary graphic depicting fresh scent



{Note to reviewer: The following are considered optional proprietary graphics and claims.}  
{Section 5}



- ✓ item replaced
- ✓ money refunded

{Note to reviewer: The following are considered optional proprietary graphics and claims.}  
{Section 6}

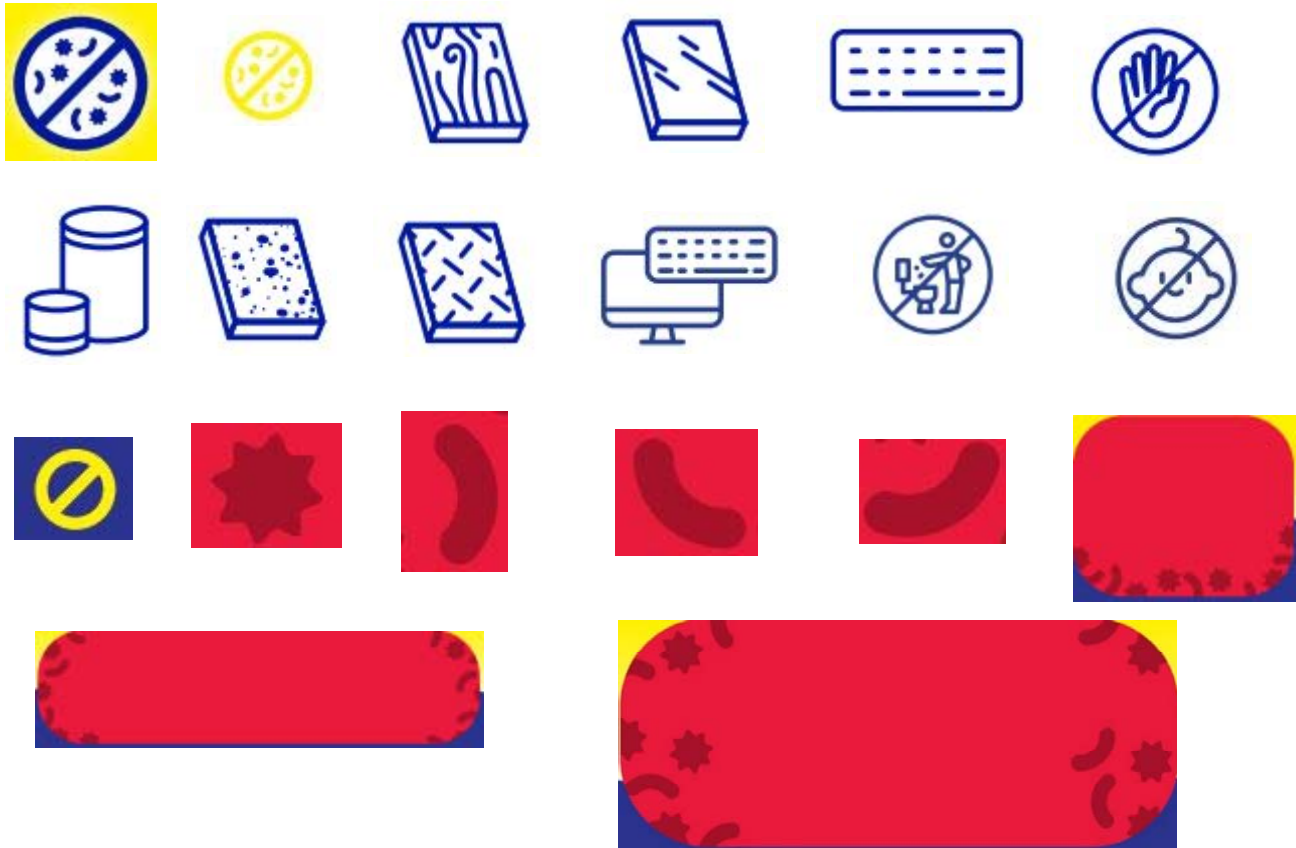




{Note to reviewer: The following are considered optional proprietary graphics and claims.}  
{Section 7}



{Note to reviewer: The following are considered optional proprietary graphics and claims.}  
{Section 8}



{Note to reviewer: The following are considered optional proprietary graphics and claims.}  
{Section 9}



*{Note to reviewer: The following are considered optional proprietary graphics and claims.}*  
**{Section 10}**



{Note to reviewer: The following are considered optional proprietary graphics and claims.}  
{Section 11}



{Note to reviewer: The following are considered optional proprietary graphics and claims.}  
{Section 12}



*{Note to reviewer: The following are considered optional proprietary graphics and claims. The graphics may be presented as seen below or may differ slightly in graphic design but not intent on the market container label.}*  
**{Section 13}**



**OTHER CLAIMS:**

- Signature SELECT QUALITY GUARANTEED
- OUR PROMISE, QUALITY & SATISFACTION 100% GUARANTEED OR YOUR MONEY BACK *{Note to reviewer: This guarantee statement may be depicted in a logo format.}*

{Note to reviewer: The following are considered optional proprietary graphics and claims. The graphics may be presented as seen below or may differ slightly in graphic design but not intent on the market container label.}  
{Section 14}



**OTHER CLAIMS:**

- LOVE IT OR IT'S ON US



{Note to reviewer: The following are considered optional proprietary graphics. The graphics may be presented as seen below or may differ slightly in graphic design but not intent on the market container label.}  
{Section 15}



*{Note to reviewer: The following are considered optional proprietary graphics. The graphics may be presented as seen below or may differ slightly in graphic design but not intent on the market container label.}*  
**{Section 16}**

