



UNITED STATES ENVIRONMENTAL PROTECTION AGENCY
WASHINGTON, DC 20460

OFFICE OF CHEMICAL SAFETY
AND POLLUTION PREVENTION

June 14, 2023

Desiree Valentin
Regulatory Affairs Specialist
Arxada LLC
Electronic Transmittal: desiree.valentin@arxada.com

Subject: Notification per PRN 98-10 – To add optional marketing graphics and claims per PRN 98-10
Product name: LONZA DISINFECTANT WIPES PLUS
EPA Registration Number: 6836-336
Received Date: 5/31/2023
Action Case Number: 00452529

Dear Ms. Valentin:

The Agency is in receipt of your Application for Pesticide Notification under Pesticide Registration Notice (PRN) 98-10 for the above referenced product. The Antimicrobials Division (AD) has conducted a review of this request for its applicability under PRN 98-10 and finds that the action requested falls within the scope of PRN 98-10.

The label submitted with the application has been stamped “Notification” and will be placed in our records.

Should you wish to add/retain a reference to the company’s website on your label, then please be aware that the website becomes labeling under the Federal Insecticide Fungicide and Rodenticide Act and is subject to review by the Agency. If the website is false or misleading, the product would be misbranded and unlawful to sell or distribute under FIFRA section 12(a)(1)(E). 40 CFR 156.10(a)(5) lists examples of statements EPA may consider false or misleading. In addition, regardless of whether a website is referenced on your product’s label, claims made on the website may not substantially differ from those claims approved through the registration process. Therefore, should the Agency find or if it is brought to our attention that a website contains false or misleading statements or claims substantially differing from the EPA approved registration, the website will be referred to the EPA’s Office of Enforcement and Assurance.

If you have any questions, please contact FlintSilva.Tara@epa.gov or Oiguenblik.Emilia@epa.gov.

Sincerely,

A handwritten signature in black ink that reads "Tara M. Flint Silva".

Tara Flint Silva, Acting Product Manager 31
Regulatory Management Branch I
Antimicrobials Division
Office of Pesticide Programs

Note to reviewer:

[Items in brackets [AAA] and the brackets themselves are optional and may/may not be included on final label]

{Items in braces {AAA} are for information purposes and will not appear on final label}

LONZA DISINFECTANT WIPES PLUS NOTIFICATION

6836-336

The applicant has certified that no changes, other than those reported to the Agency have been made to the labeling. The Agency acknowledges this notification by letter dated:

06/14/2023

[One-Step⁴] and/or [Disinfectant⁵] and/or [Virucide*] and/or [Sanitizer⁶]

Kills Flu Virus*⁴

Active Ingredients:

Octyl decyl dimethyl ammonium chloride.....	0.0909%
Diocetyl dimethyl ammonium chloride.....	0.0364%
Didecyl dimethyl ammonium chloride.....	0.0545%
Alkyl (C ₁₄ , 50%; C ₁₂ , 40%; C ₁₆ , 10%) dimethyl benzyl ammonium chloride	0.1212%
Other Ingredients:.....	99.6970%
Total.....	100.0000% ¹

KEEP OUT OF REACH OF CHILDREN CAUTION [PRECAUCIÓN]

See [left] [side] [right] [back] [bottom] panel for Precautionary Statements and First Aid

Manufactured by:

Arxada, LLC

412 Mt. Kemble Ave., Suite 200S

Morristown, NJ 07960

EPA Reg. No. 6836-336

EPA Est. No. (as indicated on container)

[circled letter is last [digit] [number] of lot [code] [number]]

Net Contents: insert # [premoistened] [towelettes] [wipes] [disinfecting] [antimicrobial] [cleaning] [wet] [multi-purpose] [touch-up] [pre-moistened cloths] [sheets]

Net Contents: (expressed as avoirdupois pounds and ounces)

[Minimum Wt.]

[optional: wipe dimensions:] X x X [inches] [in.]

[Barcode]

[DOT symbols]

[QR Code]

[Country of origin (insert country)]

[Manufactured in (insert country)]

[Beginning of] [See] [End of] [bottom] [side] [for] [batch] [lot] [date] [code for EPA] [code indicates EPA] [Est.] [Establishment]

[No.] [Number] [#]

[Alpha character will precede] [batch] [lot] [date] [code on product]

[Manufactured For:] [Distributed by:] [Sold by:] [Marketed By:] [Insert address]

{Note to Reviewer: for multi-packs}

[2][3][x]- [canister] [pack]

[[Bonus] Twin pack]



[Do not flush]

Lonza Disinfectant Wipes Plus

EPA Reg. No. 6836-336

EPA Label Notification 2023-05-19

PRECAUTIONARY STATEMENTS

HAZARDS TO HUMANS AND DOMESTIC ANIMALS

Caution. Causes moderate eye irritation. Avoid contact with eyes or clothing. Wash thoroughly with soap and water after handling and before eating, drinking, chewing gum, using tobacco or using the toilet.

FIRST AID

If in eyes: Hold eye open and rinse slowly and gently with water for 15-20 minutes. Remove contact lenses, if present, after first 5 minutes, then continue rinsing eye.

Call a poison control center [*insert phone number*] or doctor for treatment advice. Have the product container or label with you when calling poison control center or doctor or going for treatment.

{Optional Emergency contact information}

[For emergency information on (product, usage, etc.), call (1-XXX-XXX-XXXX), Monday through Friday, 9 a.m. to 5 p.m. After 5 p.m. call your poison control center at 1-800-222-1222.]

{Note to reviewer: Pages 3-22 are considered optional marketing language. All designators (i.e. asterisks and numbers) used throughout the label may be interchanged as needed on final printed label.}

{Note to reviewer: The following claims containing "New" may only be used for a period of six months after EPA's approval of a revised or alternate formula, beginning when the product is first sold or distributed.}

- 2 New Wipes
- Introducing
- Introducing new
- New
- New and Improved!
- New [Convenient] [Amazing] Package
- New easy to dispense
- New easy-glide dispensing top
- New Easy [Start Lid] [Start Package] [Grab Lid]
- New EZ [to start lid] [start package] [Grab Lid]
- New larger [bigger]-sized wipe
- New Larger Size
- New More Scrubbing Power
- New Strong wipe for tougher [jobs] [messes]
- New Stronger Wipe for tougher [jobs] [messes]
- New [thick] [textured] wipe
- New Top
- New tougher wipe for tougher cleaning [messes]
- New tougher wipe for [your] tough[er] jobs
- New Wipes
- [New] [Now] [low-streak] formula

CLEANING CLAIMS:

- [{{Insert number less than 10}}x] [tougher][stronger][more powerful] [better] cleaning [power] [on] [{{insert one or more soils from soil table}}] [and] [tough messes] [than previous] [wipe][cloth]
- [{{Insert number less than 10}}x] more absorbant than previous [wipe][cloth]
- [25%] [30%] [50%] more grease cleaning power
- [A] Clean you can trust
- [All] [Multi-purpose] kitchen [everyday] [daily] [touch-up] [cleaning]
- Clean more with less
- Clean surfaces⁴ at your fingertips
- Clean to a virtually streak-free shine
- Clean with just a wipe or a touch up
- Cleaning
- Cleaning just got a whole lot easier
- Cleans
- Cleans [away] [up] dirt, dust and hair
- Cleans [grease] better than ever
- Cleans faster because the [scrubbies] [texture] removes [stubborn] [stuck on] [dirt] [messes]
- Cleans more than ever
- Cleans things you never thought a wipe could
- Cleans to a [Sparkle] [Shine]
- Cleans what you can't see
- Convenience of a wipe [a cloth]
- Convenient
- Cuts through [tough] [dirt] [stains] [grime] [soils] [dried on stains] [dried on soils]
- Cuts Through [Tough] [Messes] [Grease] [Grime]
- [Everyday] [Regular] [Cleaning] Wipes
- [Everyday] [Regular] Cleaning
- [Everyday] [Regular] Wiping
- Extra Power for your tough cleaning jobs
- Extra Power wipe for cleaning extra tough [jobs] [messes]

CLEANING CLAIMS (Cont.):

- Fast drying
- For [light touch ups] [quick clean-ups] [in one step⁴]
- For a Powerful Clean
- For everyday messes
- For the quick touch ups, try **Lonza Disinfectant Wipes Plus**
- [For] when a regular wipe [just] can't get the job done
- Gets up stuck-on messes [so you don't have to get on hands and knees]
- Greasy messes
- [Great] [Designed] [Built] [Tough] [Textured Design] for your Toughest Messes
- [Great] [Designed] [Built] for Tough [Messes] [Cleaning]
- [Great] for [Spring] [Home] [Kitchen] [Bathroom] [Dorm] [Office] [Cart] [Car] Cleaning
- [Great] for Cleaning Your [Home] [Kitchen] [Bathroom] [Room] [Dorm] [Office] [Cart] [Car]
- Great for Cleaning a Classroom
- Great for cleaning around the toilet
- [Great] [for] Cleans [cleaning] [up] *{insert one or more soils from Types of Soils table}* *{insert one or more Area of Use}* *{insert one or more Types of Surfaces}*
- Great on kitchen grease
- Grimy messes
- Handles daily clean-ups with no need for additional sprays, sponges or buckets.
- Helps you finish cleaning fast [quickly]
- Leaves a streak free shine
- Leaves your [house] [bathroom] [kitchen] fresh and clean
- Life doesn't stop for messes, [Wipe] [Clean] it up
- Life is Messy, [Wipe] [Clean] it up
- Low-streak formula is great on [glass] [mirrors] [stainless steel] [stainless]
- Makes [your job] [cleaning] [easier] [easy]
- More scrubbing power
- No [mixing] [spraying] [mess]
- No fuss no muss
- No more need to get on your hands and knees to [scrub] [or clean] stubborn spots.
- No sprays, no sponges, no mess
- Now cleaning is [faster] [easier] than [ever] [before]
- Now cleans better on grease
- Our most powerful [grease] [deep] cleaning wipe ever
- Our most powerful cleaning formula ever
- Picks up more messes than other wipes
- Powerful cleaner for kitchen and bath
- Powers through to clean [tough messes] [the dirt] [the grime] [all over the house]
- Quick easy clean-ups.
- [reduces the following allergens⁹] {or} [removes X% of the following allergens⁹] *{insert one or more allergens from Allergens table}*[:]
- [Removes][Reduces][Controls][Traps][and][&][Locks][Cleans][Picks up][Wipes off] [up to] [more] [than] [90%] [95%] [99%] [of] [common] [pet] [household] [inanimate] [messes] [allergens⁹] [soils] [on [from] surfaces] [with *{insert product name}*][:] *{insert one or more allergens from Allergens table}*] *{insert one or more soils from Types of Soils table }* [.] [even] [dirt][,] [and] [dust][,] [and] [crumbs][,] [and] [hair]
- Removes the grime to give you more time [alt: Removes the grime so you have more time]
- Scrub-N-Wipe[s]
- Scrubs and cleans better than ever
- Scrubs and cleans like no other [wipe]
- Sticky messes

CLEANING CLAIMS (Cont.):

- Streak-free
- Textured for [Quick][er][.] [Tough][er] Cleaning
- The convenient way to keep your home looking “just cleaned”
- The wipe to use when you don't have much time
- Touch Up
- Tough cleaning [made easy] [made easier] [at your fingertips]
- Tough Cleaning at your Fingertips!
- Tough cleaning without the tough cleaning smell
- Tough Enough to Clean a Classroom
- Tough enough to do the bigger cleaning jobs.
- Tough on [pet] [stains] [and] [dirt] [pets leave behind]
- Traps & locks away [dirt] [grease] [messes] [crumbs] [hair] [lint] [dust] [dirty greasy messes]
- Traps and locks away dirt
- Traps and locks grease and grime
- Use [daily] to clean bathroom soils such as soap, soap scum, toothpaste, hair spray, hair gel, cosmetics, shaving cream, hand or body lotion.
- Wipe down your seat. Bring [wet] [wipes] [or] [handi-wipes] to wipe down the [arm rests] [window areas] [seatbelt clasps] [and] [tray table] where you'll be sitting.
- Wipes are good for quick touchups
- Wipes Away [Tough] [Everyday] [Messes] [Grease] [Grime]
- Wipes Out [Tough] [Everyday] Messes
- Wipes Out [Tough] [Everyday] Grease
- Wipes Out [Tough] [Everyday] Grime
- Wipes Through [Tough] [Everyday] [Messes] [Grease] [Grime]
- Wipes to a [Clean] Shine [Sparkle]
- Wipes Up [Tough] [Everyday] [Messes] [Grease] [Grime]

FRESHNESS AND ODOR ELIMINATION CLAIMS:

- Deodorizes
- Don't just mask odors – [eliminate][neutralize] them
- [Eliminates][Neutralizes] odors [and freshens] on contact
- For a cleaner, fresher [home] [house], great for [all around] the [house⁴] [home⁴] [kitchen⁴] [bath⁴]
- For a long lasting scent experience
- Fresh, clean scent
- Leaves a [light] [clean] [fresh] scent
- Leaves a clean, fresh scent
- Light, clean scent
- Long lasting scent
- Odor-neutralizing [Deodorizing] [fresh] [scents][,] [and] [technology][,][and] [formulas]
- Powers through odor
- Tough on odor
- Wipes out odors
- [With a] [fresh] [clean] [citrus] [lemon] fragrance

Scent Names

{Note to reviewer: each scent below may also be represented by a graphic depicting the corresponding scent with the exception of apple which will be submitted to the Agency for review.}

FRESH / [SUMMER] CITRUS/ FLORAL/ MINT/ PINE / LEMON / WOODY/ LIME / MELON/ CLEAN / WATERFALL / [ULTIMATE] ORANGE / [SPARKLING] APPLE / INVIGORATING BREEZE / SPRING GARDEN / LAVENDER [FRESH] / GRAPEFRUIT / ORIGINAL / NEW CAR / OUTDOOR ESSENCE/[ULTRA FRESH] FRAGRANCE / SCENT / SCENTED

{Note to reviewer: each block below also represents a graphic depicting the corresponding scent with the exception of citrus, apple, and berries, which will be submitted to the Agency for review.}

- [with] [fresh scent] [scent name] [fresh scent]
- [scent names]
- Meadows & Rain
- Lavender Vanilla & Comfort
- Vanilla Lavender & Comfort
- Citrus & Light
- Spring & Renewal
- Seaside [Escape] [Scent]
- Linen & Sky
- Rocky Springs & Cool
- Apple Spice & Delight
- Powder & Elegance
- Blossoms & Breeze
- Summer & Splash
- Berries & Paradise
- Herbal Lavender

Scent Names (Cont.)

{Note to reviewer: The following can be used in any order as a fragrance descriptor:}

[Air] [Almond] [Aloe] [and] [&] [Apple] [Bay] [Berries] [Blast] [Blend] [Bliss] [Bloom] [Blossom] [Blue] [Bouquet] [Breeze] [Burst] [Calming] [Cascading] [Citrus] [Cool] [Country] [Crisp] [Crystal] [Cucumber] [Dew] [Early] [Energy] [Escape] [Escape] [Essence] [Fields] [Floral] [French] [Fresh] [Freshcut] [Fresh-picked] [Fruit[y]] [Fruits] [Fusion] [Garden] [Gentle] [Glacier] [Green] [Harvest] [Herbal] [Herbs] [Hint of] [Honey] [Infusion] [Invigorating] [Jasmine] [Island] [Lavender] [Lemon] [Lime] [Linen] [Lush] [Mango] [Meadows] [Medley] [Minerals] [Mist[y] [s]] [Modern] [Moonlight] [Morning] [Orange] [Papaya] [Peach] [Petals] [Pine] [Pomegranate] [Power] [Pure] [Rain] [Red] [Refreshing] [Ripe] [Rose Water] [Rustic] [Sage] [Sea] [Scent] [Sea Salt] [Sea Mineral(s)] [Serene] [Sheer] [Shower] [Simple] [Simply] [Sky] [Soft] [Sparkling] [Spice] [Spritz] [Stream] [Summer] [Sun-Kissed] [Sunrise] [Tea] [Tropical] [Ultimate] [Valley] [Water(s)] [Waterfall] [Wave[s]] [Whisper] [Wild] [Wildberry] [Wisp] [Zest]

CLEANING AND ODOR ELIMINATION CLAIMS:

- A fresh take on tough cleaning
- An effective way to clean and deodorize against odor-causing bacteria.
- Eliminate dirt and [neutralize] odor
- Eliminates [Removes] [kitchen] [and] [bathroom] odors
- Freshens [as you clean]
- Power[s] through [tough] [messes] [dirt] [and grease] and [help[s]] [eliminate[s]] [neutralize[s]] odors

BACTERIOSTATIC CLAIMS:

- 24 [hour] [h] [hr] odor-causing bacteriostatic barrier
- [24 [hour] [h] [hr]] Odor-causing bacteria prevention [for 24 hours]
- [Prevents] [controls] odor-causing bacteria for 24 [hours] [h] [hr]
- [Prevents] [controls] growth of odor-causing bacteria for 24 [hours] [h] [hr]
- [24 hour] [24 h] [24 hr] [48 hour] [48 h] [48 hr] [72 hour] [72 h] [72 hr] odor-causing bacteriostatic barrier
- [[24 hour] [24 h] [24 hr] [48 hour] [48 h] [48 hr] [72 hour] [72 h] [72 hr]] Odor-causing bacteria prevention [for [24] [48] [72] hours]
- Controls the growth of odor-causing bacteria [for [24] [48] [72] hours]

ANTIMICROBIAL CLAIMS:

- 2 [steps] in 1- wipes, scrubs {must choose one:} [tough [messes][stains]] [[stubborn][dried-on] spots] and disinfects⁵ [so you finish faster]
- 2 [steps] in 1- wipes, scrubs {must choose one:} [tough [messes][stains]] [[stubborn][dried-on] spots] and sanitizes⁶ [so you finish faster]
- All around the house⁴ [disinfecting] [cleaning formula]
- Antimicrobial
- Antimicrobial Formula
- [Antimicrobial] [disinfecting] [sanitizing]
- Bacteria that grows in the shower/bathroom
- Clean and [Disinfect⁵] [Sanitize⁶] from Classroom to Playground [and everything in between⁴]
- [Clean and] [disinfect⁵] [sanitize⁶] in just [4] [four] minutes⁴
- [Clean and] [disinfect⁵] [sanitize⁶] [commonly touched] [household] surfaces⁴
- Cleans and [disinfects⁵] [sanitizes⁶] [without scratching] [surfaces⁴]

ANTIMICROBIAL CLAIMS (Cont.):

- Cleans and [disinfects⁵] [sanitizes⁶] in one step⁴
- Cleans, Disinfects, and Freshens^{4,5}
- Cuts [tough] grease, kills bacteria
- Daily [Surface⁴] [Disinfectant] [Sanitizer] [Cleaner]
- [Designed] [Built] for [disinfecting] [sanitizing] and [cleaning] [wiping] everyday
- [Designed] [Built] for Everyday [Disinfecting] [Sanitizing] [Cleaning] [Wiping]
- [Disinfect] [Sanitize] [Surfaces⁴] [Your House⁴] [Your Kitchen⁴] [Your Bathroom⁴] [Daily] [Everyday]
- [Disinfect] [Sanitize] [Your Desk⁴] [Your Office⁴] [Your Room⁴] [Daily] [Everyday]
- [Disinfecting] [Sanitizing] Formula
- [Disinfecting] [Sanitizing] Wipes
- [Disinfects] [Sanitizes]
- [Disinfects⁵] [Sanitizes⁶] [as it cleans] [and scrubs tough messes in one step⁴]
- Disinfects surfaces⁴ by killing [99.9%] SARS-Related Coronavirus 2 [SARS-CoV-2] [USA-WA1/2020] [in one-step⁵]
- Disinfecting wipes with scrubbing action
- Effective against SARS-Related Coronavirus 2⁴ [SARS-CoV-2] [USA-WA1/2020] [in 15 seconds]
- [Effective against] [Disinfects] [Kills] [99.9%] SARS-CoV-2⁴ [virus]
- [Effective against] [Disinfects] [Kills] [99.9%] SARS-CoV-2⁴ virus, the cause of COVID-19
- Effective in sanitizing [your][household⁴][kitchen⁴][bathroom⁴][surfaces⁴]
- Effective in the presence of 5% serum contamination
- Effectively [disinfects] [sanitizes] common household surfaces⁴
- Everyday [Surface⁴] [Disinfectant] [Sanitizer] [Cleaner]
- [Finally] a wipe that cleans and [disinfects] [sanitizes]
- Great for Everyday [Disinfecting] [Sanitizing] [Cleaning] [Wiping]
- Kills 99.9% of Germs² [Bacteria] [Viruses*] [Bacteria and Viruses*]
- Kill[s] [99.9%] [of] [kitchen] [bathroom] [bedroom] [living room] Germs² [in 4 minutes] [in 10 minutes]
- Kills bacteria [while it cleans]
- Kills [99.9%] [of] Cold & Flu Virus[es]*⁴
- Kills coronavirus^{4,8} that causes COVID-19
- [Kills] [Effective against] the virus^{4,8} that causes COVID-19
- [Kills] [Eliminates] 99.9% SARS-Related Coronavirus⁴ [SARS-CoV-2] [USA-WA1/2020] [causative agent of COVID-19] [the virus that causes COVID-19]
- [Kills] [[Destroys] 99.9% germs² [in] [just] [4 minutes]
- [Kills] [Removes] [Destroys] 99.9% (*Insert pathogen or pathogens other than avian influenza A from lists on pages 19-20*) [on [pre-cleaned] environmental surfaces⁴]
- [Kills] [[Removes] [Destroys] 99.9% of bacteria⁴
- [Kills] [Removes] [Destroys] 99.9% of bacteria, leaves [leaving] surfaces⁴ [clean and] disinfected
- [Kills] [Removes] [Destroys] 99.9% Avian Influenza A H3N2 [and] H5N1 on pre-cleaned environmental surfaces⁴
- [Kills] [Removes 99.9%] [Effective against] Coronavirus⁴
- Kills Germs² [Influenza Type A, the Flu Virus⁴] [Bacteria] [Bacteria and Viruses*] [Viruses*]
- [Kills] [Wipe Out] 99.9% of [Germs²] [Influenza Type A, the Flu Virus⁴] [Bacteria] [Viruses*]
- Kills germs²
- Kills Salmonella enterica, Methicillin-Resistant Staphylococcus Aureus & Flu Virus*⁴!
- Kills the coronavirus^{4,8} that causes COVID-19
- Kills the virus^{4,8} that causes COVID-19
- Kills [the] COVID-19 virus^{4,8}
- Kills [99.9% of] SARS-CoV-2⁴, which causes COVID-19
- Kills [Wipes Out⁵] 99.9% [of] [Listeria monocytogenes] [MRSA] [Methicillin-Resistant Staphylococcus Aureus]
- Leaves surfaces⁴ clean and disinfected
- [Proven to] kill[s] the coronavirus^{4,8} that causes COVID-19

ANTIMICROBIAL CLAIMS (Cont.):

- [Proven to] kill[s] the virus^{4,8} that causes COVID-19
- [Proven to] wipe out⁵ 99.9% of the coronavirus^{4,8} that causes COVID-19
- [One-Step] Clean[s][Cleaning] and Disinfect[s][Disinfection][Disinfectant] [Wipe] [in one step]^{4,5}
- Aids in the reduction of cross contamination between treated, hard, non-porous surfaces
- Remove [99.9% of] [Bacteria] [Germs²] [from Your] [Surfaces⁴] [Home⁴] [Kitchen⁴] [Bathroom⁴] [Office⁴]
- [Sanitize][Disinfect] [airplane][airliner] [tray[s]] [tray table[s]]
- [Sanitize][Disinfect] any room in the house⁴
- [Sanitize] [Disinfect] [baby][children's] toys^{3,4}
- [Sanitize][Disinfect] [bathroom⁴][kitchen⁴] [sink[s]] [faucet[s]] [toilet[s]] [flush handle][seat] [light switch] [door][handle][knob]
- [Sanitize][Disinfect] hard, non-porous surfaces of [camping][hiking][boating] equipment⁴
- [Sanitize][Disinfect] [cell][mobile][phones]
- [Sanitize][Disinfect] [computers[s]][keyboards] [touchpads] [mouse]
- [Sanitize][Disinfect] [daycare][childcare] [facilities⁴]
- [Sanitize][Disinfect] [desk tops] [work tables] [work areas] [school desks] [shared equipment⁴]
- [Sanitize][Disinfect] [hotel][motel][public][shared] [TV][television[s]] [remote control[s]][remote[s]] [telephone[s]][phone[s]] [computer[s]][keyboard[s]] [fax machine[s]]
- [Sanitize][Disinfect] [shopping][grocery] cart[s] [handle[s]]
- [Sanitize][Disinfect] the hard, non-porous surfaces of [cabinets], [chairs], [counter[s]top[s]], [shower][door[s]][stalls], [bathtub[s]], [sink[s]], [vanities], [vanity][top[s]], [bathroom][fixture[s]][faucet[s]]
- [Sanitize][Disinfect] the hard, non-porous surfaces¹⁰ of [personal protective equipment⁴] [PPE⁴] [respirators⁴] [full face breathing apparatus⁴] [gas masks⁴] [goggles⁴] [face shields⁴] [hearing protection⁴] [ear covers⁴] [safety ear muffs⁴] [helmets⁴] [protective head gear⁴] [hard hats⁴]
- [Sanitize][Disinfect] the hard, non-porous surfaces of [sports][sporting][gym][athletic][workout] [equipment][machines]
- [Sanitize][Disinfect] the hard, non-porous surfaces of [wrestling][gymnastic][gym][athletic][yoga][tumbling] [mats][pads]
- [Sanitize][Disinfect] the [interior][exterior] of [common] [household][kitchen] appliances
- [Sanitize][Disinfect] [waiting rooms⁴] [public areas⁴]
- [Sanitize][Disinfect] [your][common] [household] [surfaces⁴][items][:] [such as] [high chairs⁴] [booster seats⁴] [strollers⁴] [car seats⁴] [cribs⁴] [tables] [tabletops] [counters] [countertops] [appliances] [sinks] [glazed tiles] [light switches] [door handles] [railings] [telephones] [trash][garbage][can[s]][receptacle[s]][bin[s]]
- [Sanitize][Disinfect] [your] [[automobile] [automotive] [car] interior surfaces⁴][:] [such as] [floormats] [door knobs] [steering wheels] [gear shifts] [center consoles] [dashboards] [windshields] [windows] [vinyl] [plastic] [vinyl seats]
- The convenient way to [disinfect] [sanitize] your household surfaces⁴
- The scrubbing [side] of a sponge in a disinfecting wipe
- The smart [way to] clean [and disinfect⁵] [and sanitize⁶]
- The wipe that [disinfects⁵] [sanitizes⁶] while it cleans
- This product will clean and disinfect⁵ hard, non-porous surfaces.
- Two in one action [cleans and [disinfects⁵] [sanitizes⁶] in one step⁴]
- Wipe Away⁵ 99.9% of [Germs²] [Influenza Type A, the Flu Virus⁴] [Bacteria] [Viruses*]
- Wipes out⁵ 99.9% of COVID-19-causing coronavirus^{4,8}
- Wipes out⁵ 99.9% of COVID-19-causing virus^{4,8}
- Wipe out⁵ 99.9% of germs²
- Wipes out⁵ 99.9% of the coronavirus^{4,8} that causes COVID-19
- Wipes out⁵ 99.9% of the COVID-19 virus^{4,8}
- Wipes out⁵ 99.9% of the virus^{4,8} that causes COVID-19
- Wipe Up⁵ [Germs²] [Influenza Type A, the Flu Virus⁴] [Bacteria] [Viruses*]
- [With proven] Antimicrobial Action

SANITIZATION CLAIMS:

- 99.9% effective against [Staphylococcus aureus] [Klebsiella pneumoniae] [Campylobacter jejuni] in [just] 15 seconds[!]⁶
- 99.9% effective against bacteria in [just] 15 seconds[!]⁶
- Kills 99.9% of bacteria in [just] 15 seconds[!]⁶
- Kills 99.9% of {note: choose one or more of the following pathogens} [bacteria] [Staphylococcus aureus] [Klebsiella pneumoniae] [Campylobacter jejuni] in [just] 15 seconds[!]⁶
- Sanitize [commonly touched] [household] surfaces⁴ in [just] 15 seconds[!]⁶
- Sanitizing Wipes
- [This product or product name] is an effective sanitizer against [Staphylococcus aureus [Staph]] [Klebsiella pneumoniae [Klebsiella]] [Campylobacter jejuni [Campylobacter]]⁶.

H1N1 CLAIMS:

- Kills Pandemic 2009 H1N1 influenza A virus⁴.
- Kills Pandemic 2009 H1N1 influenza A virus⁴ (formerly called swine flu).

USAGE CLAIMS:

- [Buy] [x] for [your] {Insert Use Area} [!][+][and][&] [x] for [your] {Insert Use Area}
- [Easy to use] [Everyday] [General Purpose] [Multi-Action] [Multi-Clean] [Multi-Purpose] [Multi-Surface⁴] [Multi-Use] [Triple Action] [Wipes] [Cloths]
- For Homes, Institutional and Industrial Use
- For household surfaces⁴ [all around the house] indoor and outdoor
- [For use] [Great for] [Easy to use] [at home], [in the car], [away from home], [in public places] [on the go]
- Multi-purpose
- Multi-surface⁴
- [Send] [Bring] [Wipes] [Me] to School
- Specially formulated for use in the [kitchen] [bathroom]

VALUE CLAIMS:

- \$X.XX Amazing Value
- [2] [Two] [1] [One] For You [1] [One] For School
- Amazing Value
- [Assorted] [Mixed] [Special] [Variety] [Multiple] [Multi] [Canister] [Bundle] [Pack]
- Back[-]to[-]school [essential]
- Back to School [Variety] [Special] [Canister] [Bundle] [Pack]
- Bonus Size
- Convenient [size]
- Convenience
- Family Pack
- Get more cleaning done with one wipe
- Guaranteed [to clean longer] [you'll use fewer wipes to clean more]
- Large Size, Small Size, Bonus Pack
- More cleaning in one wipe
- More cleaning power per wipe
- One wipe goes a long way to clean messes
- One wipe can be used to clean messes
- Purse Size[d] Pack
- [Special] School [Variety] [Canister] [Bundle] [Pack]
- Spring Cleaning [Special] [Value] [Bonus] [Canister] Pack
- Travel [Size] [pack]
- [2] [Two] Free Cloths
- Value
- [Value] [Multi] Pack
- Value Size
- Variety Pack
- XX% More [Free] Wipes, Bonus Size, [Bonus] [Free] [27-ct] [35-ct] [XX-ct] Wipes, XX for the Price of YY.

SURFACE SAFETY CLAIMS:

- Do not use on surfaces that are hot to the touch. Allow all surfaces to come to room temperature.
- Non-abrasive
- Non-scratch[ing]
- Not recommended for use on computer or television monitor screens.
- Testing recommended on an inconspicuous area prior to using.
- These [wipes] [towelettes] [cloths] will not harm [most] surfaces.
- Will not scratch

SUBSTRATE CLAIMS:

- 2 sided wipe
- 2 Sides
- [2 Sides:] [scrubbing power for tough messes] [wiping side for quick cleanups]
- [Cloth-like texture] [Textured] for scrubbing power
- Cloth-like [textured] [strong]
- Cloths [Wipes] quickly remove dirt, spots and smudges
- Dual [action] [purpose] [scrubs] [side] [wipes] for tough messes
- Grooved for [Grime] [Tough Messes] [Grease]
- Improved scrubbing texture
- [Long lasting] [substrate] [wipe] [towelette] [cloth] [material]
- Our thickest wipe [ever]
- [Our] toughest wipe ever
- Made with scrubbing fibers
- Premoistened
- [Premoistened] [wet] disinfecting [textured] [antimicrobial] [wipes] [towelettes] [cloths]
- [Quilted Texture] [Textured] to [Scrub] [Power] [Fight] Through Tough Messes
- Scrubbing Action Wipes
- [Scrubbing] [Smooth] Side
- [Special] [Unique] 3-D Texture for Tough Messes
- [Strong] [Thick] wipe
- Strong wipe for Heavy Duty cleaning
- Strong wipe for tougher [jobs] [messes]
- Stronger Wipe for heavy duty cleaning
- [Substrate] [Wipe] [Towelette] [Cloth] [material] derived 100% from [wood pulp] [cotton] [cellulose] [recycled cellulose]
- [Substrate] [Wipe] [Towelette] [Cloth] [Material] [lasts a long time] [goes further] [lasts longer]
- [Textured cloth] gets up stubborn stuck on messes
- Textured [cloths] [towelettes] clean floors faster [and easier]
- Textured [Wipe] [cloth] [towelette] [for tough jobs] [for tough cleaning]
- Textured for better [cleaning] [scrubbing] power
- Textured to Pick Up Particles
- The wipe that is [strong] [durable] [thick] [heavy] enough to scrub [and] [clean]
- Thick [wipe], cloth-like texture
- Thicker
- Thicker than an ordinary wipe
- Thicker wipe [cushionyTHICK™]
- Thicker, cloth-like feel for tough messes
- Tough like a towel
- Tough [Textured] Wipes
- [Tough] [Thick] wipe[s] for tough [cleaning] [messes]
- Tough[er] wipe for tough[er] cleaning [jobs]
- [Unique] [Special] [Thick] [Quilted] Texture for Tough [Messes] [Cleaning]
- Wipe fabric made from 100% renewable resources
- With [Magic Lock] [Magic Scrub] [Trap n' Lock] [Magic Quilt] fiber[s]
- With a cloth-like 3D texture
- With extra cleaning power [wipes] [sheets] [cloths]
- With [extra] scrubbing power
- With extra strength {*Must choose one:*} [wipes] [sheets] [cloths]

Note to reviewer: A representative graphic of a substrate may be added to the label. Only a graphic of the substrate actually being used can be added to the final printed label.

PACKAGING CLAIMS:

- Better [package] [dispensing]
- Breakthrough package
- [Convenient] [Hassle-free] [One-hand] dispensing
- Dispenses better
- Dispenses Like A Tissue [Tough Like A Cloth [Towel]]
- Dispenses like a tissue, cleans like a cloth
- Easier dispensing
- Easy [dispensing] [Glide Lid]
- Easy dispense [lid] [package]
- Easy dispensing [and] [tough texture] [for the ultimate wipes experience]
- Easy [EZ] Dispenser
- [Easy] [EZ] start
- Easy to [open] [thread] [access lid] [dispense]
- Easy to use
- Easy-glide dispensing top
- [Eco-shape Canister]
- Energy Efficient Canister
- EZ dispensing Lid
- EZ [Easy] to use lid
- Fewer rips, bunches, and snags
- Great dispensing lid
- [Just like a tissue box] [Tissue box dispensing]
- Just [pull] [pop] clean and toss.
- No [more] [pinched fingers] [rips] [tears]
- One at a time [dispensing, like a tissue box]
- One wipe at a time dispensing
- Only use approved refill packs.
- Package breakthrough
- Pop up
- Pop and go
- Pop and Clean
- Portable
- Recyclable packaging
- Refill [size] [pack] [Refill for **Lonza Disinfectant Wipes Plus** container] [tub]
- [Regular] [and] [Everyday] Wipe Pack
- Specially designed package that easily dispenses one at a time
- Zip Strip
- Zipper Bag

{Note to reviewer: The following may only be used if the Supplemental Registrant has documentation to support these claims.}

- X% PCR (Post-Consumer Recycled) Plastics
- 100% Post-Consumer Recycled Canisters
- [30][xx]% Thicker and Quilted Texture [for Tough] [Messes] [Cleaning]
- [30%] thicker wipes
- Canister contains xx% post-consumer recycled plastic
- Converted with [100%] [xx%] wind energy
- Less Oil Consumption], [Landfill Waste], [Production Energy], [and] [Freight Energy]
- [Made with] xx% less plastic
- [Made with] xx% less plastic [than similar size containers][than previous[ly] used container[s]]
- Package contains xx% post-consumer waste
- Package contains xx% recycled materials
- Package is 100% recyclable
- Packaged with 100% [xx%] wind energy

- Packaging contains xx% [post-consumer waste] [recycled materials]
- Produced with [Wind][Solar] Energy
- [Substrate] [Towelette] [Cloth] composed of 100% [xx%] recycled materials
- [Substrate] [Towelette] [Cloth] composed of 100% [xx%] renewable materials
- The product was manufactured with 100%[xx%] [Wind] [Solar] Energy
- [This product was] [Produced] [Manufactured] with [100%] [xx%] [wind] [solar] energy
- Wipe fabric made from 100% renewable resources

FLOOR MOP CLAIMS:

- Fits [insert name of mop]
- Fits Lysol® Quick Clean & Swiffer® Tools.
- Fits Swiffer®
- Fits Swiffer® Mop-Head
- Fits Swiffer® or Pledge Grab-It® Mop Heads
- For Mopping

LYSOL® is a registered trademark of Reckitt Benckiser Inc.

SWIFFER® is a registered trademark of the Proctor & Gamble Company

PLEDGE GRAB-IT® is a registered trademark of S.C. Johnson & Son Inc.

OTHER CLAIMS:

- [After use], just toss wipe away [in trash][in garbage].
- Assembled in [the] USA [of US and foreign components.]
- Best if used by {insert date}
- [Call] {insert phone number}
- Cleaning Advice? Visit www.mrclean.com
- Clear drying formula
- Comments?
- Contains No Phosphate
- Do not use as a diaper wipe or for personal cleansing.
- Do not use for personal cleansing.
- For full ingredient information please visit our website.
- For full ingredient information please visit {insert supplemental registrant's website address from table}.

https://www.samsclub.com/cmembers-mark/4710101	https://www.meijer.com/	https://www.wegmans.com/
https://www.walmart.com/	https://www.walmart.ca/brand/great-value/1019684	https://www.uline.com/
https://www.target.com/	https://www.aholdelhaize.com/	https://www.essentialeveryday.com/
https://www.dollargeneral.com/	https://besimplydone.com/	https://www.hannaford.com/
https://www.kroger.com/	https://www.loblaw.ca/en/home	https://www.harristeeter.com/
https://www.amazon.com/	https://www.heb.com/	https://www.boxed.com/
https://www.costco.com/kirkland-signature.html	https://www.foodlion.com/	https://www.cleancutwipes.com/
https://www.bjs.com/	https://www.wincofoods.com/	

- For full ingredient information please call [Customer Service] [at] {or} {insert supplemental registrant's customer service number}.
- [For information call: [phone number to be inserted]]
- Fragrance-free {Note to reviewer: This claim can only be included on the label when a formula with no fragrance is used.}
- If you are not completely satisfied with this product, return it for a refund or replacement.
- Made in the USA [of] [U.S.] [and [imported] [global] [parts] [components]]

- [Made] [Assembled] [in the USA] [of] [with] [U.S.] [and] [imported] [global] [foreign] [parts] [raw materials] [components] [ingredients]
- Not for individual sale
- Not for sale [or use] after {insert date}

OTHER CLAIMS (Cont.):

- Quality Guaranteed [or your money back]
- Questions?
- Ready to Use
- Save time with [this product or product name][!]
- Saves steps
- Saves Time
- The Supermarket Low Price Leader®
- This product contains no [phosphates or] phosphorous [compounds].
- Try our [other] [{Insert branding/logo wording}] [family] of [disinfecting][sanitizing] products
- Use by {insert date}

Lonza Disinfectant Wipes Plus:

- deliver disinfectant and cleaning performance
- deodorizes by killing microorganisms [bacteria] that cause offensive odors.
- effectively controls malodors.
- will disinfect⁵, clean and deodorize surfaces⁴ in rest rooms and toilet areas, garbage cans and garbage storage areas, and other places where bacterial growth can cause malodors.
- is formulated for use in daily maintenance programs with a balance of detergents and malodor counteractants that deliver effective cleaning, disinfecting and malodor control.
- will not leave grit or soap scum.
- is a [one-step⁴] disinfectant⁵ cleaner that is effective against a broad spectrum of bacteria when used as directed [on the following surfaces:] *{insert one or more Types of Surfaces}*
- is a proven "one-step⁴" disinfectant⁵ - cleaner which is effective in the presence of 5% serum contamination.
- Kills [kitchen] [bathroom] bacteria.
- Kills bacteria
- help you accomplish things you never thought a wipe could do
- [wipes] [cloths] [sheets] help you to accomplish things you never thought a wipe could do
- [help] take the hassle out of dispensing disinfecting wipes. The Easy-Glide Lid dispenses wipes one-at-a-time, like a tissue-box, so you get the number of wipes you want with no pinched fingers, [torn wipes], [or] [jammed lids]. Plus they kill bacteria to keep your [family's] home [clean]. Use it on bathroom and kitchen surfaces⁴ like countertops, appliances, door handles, light switches, toilets, sinks, and tubs.
- are designed for your toughest tasks. They are [thick and strong] [thicker and stronger] to stand up to [tough] [your toughest] messes, and they have a cloth-like texture for extra scrubbing power. Plus they kill bacteria to [help] keep your [family's] [home] [clean]. Try it [them] on [your] tough [toughest] messes in the kitchen and bathroom, like baked-on grease on your stove [top]⁷, sticky messes on your counters, and built-up grime on your bathroom sinks.

Cross-contamination is of major [housekeeping] concern. **Lonza Disinfectant Wipes Plus** have been formulated to aid in the reduction of cross-contamination between treated surfaces⁴ in the home, schools, institutions and industry.

Use Lonza Disinfectant Wipes Plus:

- in federally inspected Meat & Poultry Plants as a disinfectant on all surfaces⁴ in inedible product processing areas, non-processing areas and / or exterior areas.
- as a disinfectant on hard, non-porous surfaces.
- in kitchens, bathrooms and other household areas.
- to clean and disinfect⁵ finished floors, sinks and tubs.
- for non-scratch cleaning of showers and tubs, shower doors and curtains, fixtures and exterior toilet bowl surfaces.
- to clean and disinfect⁵ hard, non-porous surfaces¹⁰ of personal [safety] [protection] equipment, protective headgear, hard hats, half mask respirators, full face breathing apparatus, gas masks, goggles, spectacles, face shields, silicone rubber or PVC hearing protectors and vinyl covered ear muffs. Rinse all equipment that comes in contact with skin before reuse with clean warm water [about 120°F], and allow to air dry. [Precaution: Cleaning at 120°F temperature will avoid overheating and distortion of the personal [safety] [protection] equipment that would necessitate replacement.
- to clean and disinfect⁵ hard, non-porous surfaces of gym equipment, exercise machines, wrestling mats and gymnastic equipment.

[*Insert Brand name*] is registered in the United States and Trademark Office to [*Insert Company Name*].

[*Insert Brand name*] is a registered trademark of [*Insert Company Name*]

{Note to reviewer: The following is considered optional marketing language. Each item below also represents a graphic depicting the corresponding area of use. The graphics will only represent individual objects or outsides or insides of buildings as described below. No people, animal, or food will be depicted in graphics.}

[AREAS OF USE:]

Use **Lonza Disinfectant Wipes Plus** in:

Bathroom[s]
Children's room
Garage[s]
Home[s] [households]
Kitchen[s]
Living room

Dental offices
Hospitals
Medical Offices
Nursing homes

Day care [centers]
Nurseries
Preschool[s]

Bars
Cafeterias
Convenience stores
Food processing plants
Food storage areas
Institutional kitchens
Restaurants
USDA inspected food processing facilities

Athletic facilities
Barber shops
Business and office buildings
Colleges
Correctional facilities
Dressing rooms
Exercise facilities
Factories
Family Rooms [Dens]
Health clubs

Hotels
Institutional facilities
Institutions
Laundry rooms
Locker rooms
Motels
Office[s]
Playrooms
Prisons
Public facilities
Public rest rooms
Salons
School[s]
Shower and bath areas
Sick rooms
Work

Camp grounds
Play ground equipment

Airplanes
Airports
Ambulances
Boats
Buses
Campers
Car[s]
Emergency [Police] [EMS] [Fire] [Rescue] vehicles
[Mobile homes] [RVs]
Ships
Taxis
Trailers
Trains
Transportation terminals
Trucks

Non-Food Contact Sanitizing Use Areas: Homes, Schools, transportations, airplanes, trains, automobiles, office buildings, dairies, meat processing plants, food processing areas, food handling areas, bars, restaurants, healthclubs, gyms, grocery stores, weight rooms, exercise rooms.

{Note to reviewer: Each item below also represents a graphic depicting the corresponding type of surface. No people, animal, or food will be depicted in graphics. Only exteriors of microwaves and refrigerators will be depicted. Toy graphics will be submitted to Agency for review.}

[TYPES OF SURFACES:]

[Use **Lonza Disinfectant Wipes Plus** on washable hard, non-porous surfaces of:]

{or}

[This product] will clean and disinfect⁵ washable hard, non-porous surfaces of:

Appliance[s] [handles]	Storage areas
Baby carriages	Stoves ⁷ [stovetops ⁷]
Baseboards	Strollers
Bathroom fixtures	Tables, [picnic tables]
Bathtubs [Fiberglass]	Tanning Beds
Blinds	Telephones
Cabinets	Exterior Toilet bowl surfaces
Cages	Toilet seats
Car seat	[Tool] [Toy] box[es]
Ceiling fan blades	Toys ³
Chairs	Tub walls
[Computer] [Keyboards] [Mouse]	Tubs
Counters [countertops] [Bathroom] [Kitchen]	Tiles, glazed
Cupboards	[Washable] Walls
Desks	Window Sills
Diaper changing [tables][counters]	Non-critical medical device surfaces:
Diaper pails	Beds [Medical] [Hospital]
Doorknobs	Bed frames
Equipment tables	Bed rails
Faucets	Crutches
Faucet Handles	Defibrillators
Floors	Gurneys
Finished floors	Non-critical [hospital] [medical] equipment surfaces
Garbage cans	[Medical] Examining tables
Glass	[Medical] [Hospital] Lamps
[Hand] Rails	Rescue tools
Highchairs	Resuscitators
Lab benches	[Medical] [Hospital] Scales
Laminate flooring	Stands
Light switches	Stretchers
Linoleum	Stethoscopes
Litter boxes	Walkers
Microwave ovens - exteriors ⁷	Wheel chairs
Non-Wooden Outdoor [patio] furniture except cushions and wood frames	Ultra-sound transducers and equipment
[Plastic] Booster Seats	Automobile interiors:
Plastic [Laundry Basket] [Hamper]	Center consoles
Potty trainer [seats]	[Car] Dashboard[s]
Range hoods	Door knobs
Refrigerator[s] [exteriors] [shelves] ⁷	[Floormats] [Mats]
Refrigerated storage and display equipment ⁷	Gear shifts
Remote control	Plastic
Sealed floors	[Car] Steering wheel[s]
Showers	Vinyl
Shopping cart handles	Windows
Shower [stalls] [walls]	Windshields
Sinks [bathroom, kitchen]	
Sports equipment	

[TYPES OF SURFACES:] (Cont.)

Other hard, non-porous surfaces made of:

Acrylic
Finished woodwork
Formica®
Glass
Glazed ceramic
Glazed enameled surfaces
Glazed porcelain
Metal
Plastic [such as polystyrene or polypropylene]
Sealed granite
Sealed marble
Sealed quartz
Sealed stone
Stainless steel
Upholstery- vinyl and plastic

Formica® is a registered trademark of the Diller Corporation

Note: Do not use on unpainted wood, natural marble or brass.

[TYPES OF SOILS:]

[Build Up]	Grime
[Built] Up]	Hard Water [stain]
[Burnt on] Food [stains]	Honey
[Burnt on] Grease	Jelly
[Dried on] Toothpaste	Juice stains
[Heel] [scuff] marks	Limescale
[Pen] [or] [ink] marks	Lint
[Pet] Hair	Makeup
[Tough] messes	Mildew [mold] stains
Bacon fat	Mud
Baked on cheese	Oil
Bathtub rings	Outdoor grime
Beverage stains	Pancake mix
Chicken juice	Particles [residues]
Coffee stains	Peanut butter
Cooking splashes	Pencil
Cosmetics	Pet messes
Crayon	Pet stain[s]
Crumbs	Small spills
Dirt	Smudges
Dried on food	Soap Scum
Dust	Stains
Everyday messes	Sticky messes
Fingerprint	Tea [stains]
Food [residues] [particles]	Tomato sauce
Footprints	Tough soil
Gravy	Wine [stains]
Grease	

[ALLERGENS:]

cockroach debris
cockroach matter
cockroach particles
[cat] [dog] [pet] [dander] [hair]
dust mite debris
dust mite matter
dust mite particles

hair
household surface dust
pollen [particles] [from timothy grass]
residue from [burning materials] [fireplace soot]
[cigarette smoke] [candles]
rodent feces
rodent saliva

Lonza Disinfectant Wipes Plus are a one-step disinfectant^{4,5} and Bactericide [tested according to the modified Germicidal Spray test] in the presence of 5% organic serum against:

{or}

Lonza Disinfectant Wipes Plus [are effective against⁵] [Kills 99.9%⁵] [Removes 99.9%⁵] [Destroys 99.9%⁵]:

[Bacteria:]

Staphylococcus aureus [Staph] [ATCC 6538]

Salmonella enterica [Salmonella] [ATCC 10708]

Pseudomonas aeruginosa [Pseudomonas] [ATCC 15442]

Acinetobacter baumannii [ATCC BAA-1709]

Burkholderia cepacia [ATCC 25416]

Campylobacter jejuni [Campylobacter] [ATCC 29428]

Corynebacterium ammoniagenes [ATCC 6872]

Enterobacter aerogenes [ATCC 13048]

Enterococcus faecalis [*Enterococcus*] [ATCC 29212]

Enterococcus faecalis- Vancomycin Resistant [VRE] [ATCC 51575]

Escherichia coli [E. coli] [ATCC 11229]

Escherichia coli O157:H7 [E. coli O157:H7] [ATCC 35150]

ESBL *Escherichia coli* – [Extended spectrum beta-lactamase producing E. coli] [ATCC BAA-196]

Klebsiella pneumoniae [Klebsiella] [ATCC 4352]

Klebsiella pneumoniae (NDM-1) [New Delhi metallo-beta-lactamase 1] [CDC 1000527]

Legionella pneumophila [ATCC 33153]

Listeria monocytogenes [ATCC 19117]

Salmonella schottmuelleri [Salmonella] [ATCC 8759]

Salmonella typhi [Salmonella] [ATCC 6539]

Serratia marcescens [Serratia] [ATCC 14756]

Shigella dysenteriae [Shigella] [ATCC 11835]

Staphylococcus aureus - Community Associated Methicillin-Resistant [CA-MRSA] [NRS384] [USA300]

Staphylococcus aureus - Community Associated Methicillin-Resistant [CA-MRSA] [NRS123] [USA400]

Staphylococcus aureus - Methicillin-Resistant [MRSA] [ATCC 33592]

Staphylococcus aureus - Multi-Drug Resistant [resistant to tetracycline (Tc), penicillin (Pc), streptomycin (Sm) and erythromycin (Em) and susceptible to chloramphenicol (Cm) *in vitro*] [ATCC 14154]

Staphylococcus aureus-Vancomycin Intermediate Resistant – [VISA] [CDC HIP 5836]

Streptococcus pyogenes [Strep] [a cause of scarlet fever] [ATCC 14289]

Vibrio cholerae [ATCC 14035]

[Viruses:]

*Hepatitis C Virus [HCV] [Oregon C24v-genotype 1 Strain]

*Herpes Simplex Virus Type 1 [HSV-1 Sabin]

*Herpes Simplex Virus Type 2 [HSV-2 Sabin]

*HIV-1 [AIDS Virus] [Strain HTLV IIIB]

*Human Coronavirus [ATCC VR-740, Strain 229E]

*Influenza Type A Virus [Influenza] [[the] Flu [Virus]] [A/11/1978]

*Influenza A Virus H1N1 [ATCC VR-1469, Strain A/PR/8/34]

*Influenza A Virus (H7N9) [A/Anhui/1, Centers for Disease Control and Prevention CCID/NCIRD/ID/MVVB]

*Respiratory Syncytial Virus [RSV] [ATCC VR-26, Strain Long]

*Rotavirus [ATCC VR-2018, WA strain]

*SARS Associated Coronavirus [SARS] [cause of Severe Acute Respiratory Syndrome] [CDC#200300592, ZeptoMetrix]

*SARS-Related Coronavirus 2 [SARS-CoV-2] [(cause of COVID-19)] [strain 1/2020, Source: BEI Resources, NR-52281]

*Vaccinia Virus [Pox Virus] [ATCC VR-119, WR strain]

[Animal Viruses:]

- Avian Influenza Virus H3N2 [ATCC VR-2072]
- Avian Influenza Virus H5N1 [CDC # 2006719965]
- Canine Distemper Virus [ATCC VR-128, Strain Lederle]
- Newcastle's Disease Virus [ATCC VR-108 Strain B1, Hitchner or Blacksburg]
- Pseudorabies Virus [ATCC VR-135, Strain Aujeszky]

{Note to reviewer: Below claims will only be used when Sanitizing directions are included on final label}

Lonza Disinfectant Wipes Plus [are] [99.9%] [effective against⁶] [Kills 99.9%⁶] [Removes 99.9%⁶] [Destroys 99.9%⁶]:

[Bacteria]

- Staphylococcus aureus* [Staph] [ATCC 6538]
- Klebsiella pneumoniae* [Klebsiella] [ATCC 4352]
- Campylobacter jejuni* [ATCC 29428]
- Escherichia coli* O157:H7 [E. coli O157:H7] [ATCC 35150]
- Listeria monocytogenes* [ATCC 19117]

{Note to Reviewer: These statements for claims against enveloped and large, non-enveloped viruses, shall not appear on marketed (final print) product labels.}

EMERGING VIRAL PATHOGENS

This product qualifies for emerging viral pathogen claims per the EPA's 'Guidance to Registrants: Process for Making Claims Against Emerging Viral Pathogens not on EPA-Registered Disinfectant Labels' when used in accordance with the appropriate use directions indicated below.

This product meets the criteria to make claims against certain emerging viral pathogens from the following viral category[ies]:

-Enveloped Viruses

For an emerging viral pathogen that is a/an...	...follow the directions for use for the following organisms on the label:
Enveloped virus	Rotavirus, Strain WA (TC Adapted), ATCC VR-2018

[Lonza Disinfectant Wipes Plus] has demonstrated effectiveness against viruses similar to **[name of emerging virus]** on **hard, non-porous surfaces**. Therefore, **[Lonza Disinfectant Wipes Plus]** can be used against **[name of emerging virus]** when used in accordance with the directions for use against **Rotavirus** on **hard, non-porous surfaces**. Refer to the **[CDC or OIE]** website at **[pathogen-specific website address]** for additional information.

OR

[Name of illness/outbreak] is caused by **[name of emerging virus]**. **[Lonza Disinfectant Wipes Plus]** kills similar viruses and therefore can be used against **[name of emerging virus]** when used in accordance with the directions for use against **Rotavirus** on **hard, non-porous surfaces**. Refer to the **[CDC or OIE]** website at **[website address]** for additional information."

{Note to reviewer: Representative graphic of wipe tub and/or hand pulling out wipe fabric may be added to the label}

{For canister}

To Open Package:

Remove cover. Pull up [towelette] [wipe] [cloth] corner from center of roll. Thread through hole in the cover. Replace cover. Open center cap on cover to remove wipe. When not in use [When not using], close center cap [securely] to prevent moisture loss.

or *{For carton or tub}*

To Open Package: Open cover and slowly peel back label on pouch. Remove [Pull out] [wipe] [towelette] [cloth] as needed. To retain moisture, reseal [pouch] [bag] by firmly pressing seal back on the [pouch] [bag] and close [carton or tub] cover.

{For Tub Without Pouch}

To Open Package: Open cover and slowly peel back label. Remove [Pull out] [wipe] [towelette] [cloth] as needed. To retain moisture, [reseal] [reclose] by firmly pressing and close [tub] cover.

or *{For refill, pouch or bag:}*

To Open Package:

[Slowly] peel back the label [open seal]. Remove [Pull out] [wipe] [towelette] [cloth] as needed. To retain moisture, reseal [pouch] [bag] by firmly pressing seal back on the [pouch] [bag]

or

To Open Package:

[Tear] [Cut] open wipe [pouch] [bag] [along dotted line]. Remove canister lid and place [bag with] roll into empty canister. Locate wipe [edge] at center of roll and thread wipe through canister opening [at angle]. Do not push finger through opening. Replace lid on canister and close tightly. Finish pulling wipe through opening. Wipes will feed automatically

or *{for the Travel Pack size}*

To Open Package: [Open cover and] slowly peel back label. [Pull out] [Remove] [wipe(s)] [towelette(s)] [cloth(s)] as needed. [Reseal label] to retain moisture [close cover].

or **To Open Package:** Open ziplock [Tear edge of pack]. [Pull out] [Remove] [wipes] [towelettes] [cloths] as needed. Reseal ziplock to retain moisture.

or *{for the single cloth or sample pack:}*

To Open Package: Tear [pouch] open [at top edge of pouch] [at tear notch] [along dotted line] [where indicated] [edge of pack]. [Pull out] [Remove] [Wipe] [Towelette] [Cloth].

{For product supplied in a single use pouch with a folded towellete, include the following:}

Unfold [Wipe] [Towelette] [Cloth]

or

To Open Package: [Remove package seal[s]] [Remove safety seal[s]] [Flip] Open lid. To remove first wipe [sheet] [wet cloth] [cloth] pull up on wipe and remove wipe through [dispensing] opening [wavy dispensing opening] [orifice]. [The next wipe will pop up automatically]. [Always] close [snap] lid securely between uses [to retain moisture].

or

To Open Package: [Remove package seal[s]] [Remove safety seal[s]]. Open [Flip open lid [package]]. To start [remove] [first] wipe [sheet] [wet cloth] take the edge of wipe from large opening to the small dispensing opening and pull up. [The next wipe [sheet] [wet cloth] [cloth] will pop up automatically.] [Always] close [snap] lid securely between uses [to retain moisture].

or

To Open Package: Open Lid. To start wipes, pull up on wipe and move wipe into the small dispensing opening [orifice] [aperture] [hole] [wave] and [pull sheet up to remove wipe] remove wipe. [The next wipe [sheet] [wet cloth] will pop up automatically]. [Always] close [snap] lid securely between uses [to retain moisture].

or

To Open Package: Flip open[up] the lid[cover][top][cap][dispensing lid]. Thread the wipe [first wipe][cloth][first cloth][sheet] through the dispensing lid and pull up to remove wipe from package. The next wipe [sheet][cloth] pops up automatically. Close lid securely between uses to retain moisture[prevent moisture loss].

or

To Open Package: Press the three [3] ridges with your thumb and push up on the cap[top][lid] to open[lid]. To remove wipe [sheet] [wet cloth] [cloth] [towelette] pull up on wipe and remove wipe through [dispensing] opening [wavy dispensing opening] [orifice]. [The next wipe will pop up automatically].

or

To Open Package: Press the three [3] ridges with your thumb and push up on the cap[top][lid] to open[lid]. Thread the wipe [sheet] [wet cloth] [cloth] [towelette] through the dispensing lid and pull up to remove wipe from package. The next wipe will pop[pull] up automatically. [Always] Close [snap] lid securely between uses [to retain moisture].

or

To Open Package: Press the three [3] ridges with your thumb and push up on the lid to open. Thread the wipe through the dispensing lid and pull up to remove wipe from package. The next wipe will pop up automatically. Close lid securely between uses to retain moisture.

or

To Open Package: Push the area marked ["Press"] ["Push"] ["Press Here"] ["Push Here"] with your thumb and push up on the lid to open. Thread the wipe through the dispensing lid and pull up to remove wipe from package. The next wipe will pop up automatically. Close lid securely between uses to retain moisture.

or

To Open Package: Open dispenser and top of bag. Pull out the first wipe approximately 6 to 8 inches from the center of the roll. Place the entire bag inside of dispenser. Thread the wipe through the opening on the dispenser lid. Close the lid to retain moisture.

Or {For flat pack or pouch or bag}

To Open Package: [Open] [closure][lid][pouch] [and] [by] [slowly] [peel][peeling][remove][removing] [back] [the] [front] [seal][label]. Remove [one] [wet] [mopping] [wipe[s]][towelette[s]][cloth[s]] [as needed]. [Reseal][Close] [pouch][closure][lid] [to prevent moisture loss][to retain moisture] [by] [firmly] [pressing][running thumb] [on][over] [the] [seal][label]. [Use abrasive side for tougher soils and soft side for light duty cleaning.]

DIRECTIONS FOR USE:

It is a violation of Federal law to use this product in a manner inconsistent with its labeling.

Do not use as a diaper wipe or for personal cleansing.

This is not a baby wipe[!]

Do not flush [in toilet].

For plastic and painted surfaces, spot test on an inconspicuous area before use.

[This product or product name] will not harm most surfaces: including acrylic, sealed fiberglass and vinyl.

Do not use on unpainted wood.

[Note: Not recommended for unpainted wood, natural marble or brass.]

TO CLEAN AND DEODORIZE:

Wipe hard, non-porous surface with [wipe] [towelette] [cloth] [sheet]. Let air dry. Discard used [wipe] [towelette] [cloth] [sheet] in trash. Do not flush [in toilet].

Rinse food contact surfaces with clean, potable water after cleaning. Do not use to clean dishes, glassware or utensils.

[TO] CLEAN [CLEANING] AND DISINFECT [DISINFECTION / VIRUCIDAL* DIRECTIONS]:

Wipe hard, non-porous-surface with [wipe] [towelette] [cloth] [sheet] until surface is visibly wet. [Use enough wipes to visibly wet surfaces.] [Use [enough] [extra] wipes to keep surfaces visibly wet for 4 minutes.] [Keep surfaces visibly wet for 4 minutes.] [Wipe surface and let it remain visibly wet for 4 minutes.] Allow surface to remain visibly wet for 4 minutes. *{Note to reviewer: if using claims for Rotavirus, the following sentence will be required:}* **[For Rotavirus**, treated surfaces must remain visibly wet for 10 minutes.] *{Note to reviewer: if using claims for SARS-CoV-2, the following sentence may be used:}* **[For SARS-CoV-2**, treated surfaces must remain visibly wet for 15 seconds.] [Let air dry.] [[Let] Permit surface to [air] dry.]

If surfaces are visibly dirty, clean first with another [wipe] [towelette] [cloth] [sheet] before disinfecting.

Discard used [wipe] [towelette] [cloth] [sheet] in trash. Do not flush [in toilet].

Rinse food contact surfaces with clean, potable water after disinfecting. Do not use to disinfect dishes, glassware or utensils.

For bacteriostatic use: Lonza Disinfectant Wipes Plus will effectively inhibit the growth of odor-causing bacteria when applied to hard, non-porous surfaces. For visibly soiled surfaces, clean visible dirt [from the surface] first. Wipe surface and let it remain visibly wet for 4 minutes. Repeat treatment every [24 hours] [48 hours] [72 hours], or more often if new growth appears.

For mold and mildew stain control: Lonza Disinfectant Wipes Plus will effectively inhibit the growth of odor-causing mold and mildew and the odors caused by them when applied to hard, non-porous surfaces. Wipe surface and let it remain visibly wet for 4 minutes. Repeat treatment every seven days, or more often if new growth appears.

***KILLS HIV ON PRE-CLEANED ENVIRONMENTAL SURFACES / OBJECTS PREVIOUSLY SOILED WITH BLOOD / BODY FLUIDS** in health care settings or other settings in which there is an expected likelihood of soiling of inanimate surfaces / objects with blood or body fluids, and in which the surfaces / objects likely to be soiled with blood or body fluids can be associated with the potential for transmission of Human Immunodeficiency Virus Type 1 [HIV-1] [associated with AIDS].

Special Instructions for Cleaning and Decontamination against HIV-1 On Surfaces / Objects Soiled With Blood / Body Fluids.

Personal protection: Clean-up must always be done wearing protective gloves, gowns, masks and eye protection.

Cleaning procedure: Blood and other body fluids containing HIV must be visibly cleaned from surfaces and objects before application of **Lonza Disinfectant Wipes Plus**. **Lonza Disinfectant Wipes Plus** [this product] [wipe] [towelette] [cloth] [sheet] can be used for this purpose.

Contact time: Leave surface visibly wet for 1 minute [60 seconds] for HIV-1. Use appropriate contact time as listed on label for all other viruses[,] [and] bacteria claimed.

Disposal of infectious material: Blood, body fluids, cleaning materials and clothing must be autoclaved and disposed of according to local regulations for infectious waste disposal.

{Note to reviewer: If Avian Influenza A is listed on the label the following statement is required.}

This product is for use on hard, non-porous surfaces not conducive to treatment by immersion or excess liquid against Avian Influenza A.

Note for reviewer: For labels that list medical premises and metal and / or stainless steel surfaces, one of the following statements must be used:}

This product is not to be used as a terminal sterilant / high level disinfectant on any surface or instrument that [1] is introduced directly into the human body, either into or in contact with the bloodstream or normally sterile areas of the body, or [2] contacts intact mucous membranes but which does not ordinarily penetrate the blood barrier or otherwise enter normally sterile areas of the body. [This product may be used to preclean or decontaminate critical or semi-critical medical devices prior to sterilization or high level disinfection.]

{or}

This product is not for use on medical device surfaces.

SANITIZING [DEODORIZING]:

To sanitize [deodorize] hard, non-porous, non-food contact surfaces; wipe surface, using enough [wipes] [towelettes] [cloths] to allow treated surface to remain visibly wet for 15 seconds [for] [*Staphylococcus aureus*] [Staph] [ATCC 6538], [*Klebsiella pneumoniae*] [Klebsiella] [ATCC 4352], [*Campylobacter jejuni*] [ATCC 29428], [*Escherichia coli*] [O157:H7] [*E. coli* O157:H7] and [*Listeria monocytogenes*]. Let surface dry. For visibly soiled surfaces, clean visible dirt [from the surface] first.

DIRECTIONS FOR FLOOR WIPE USE:

It is a violation of Federal Law to use this product in a manner inconsistent with its labeling.

TO CLEAN AND DEODORIZE: Wipe hard, non-porous surface with wipe. Let air dry. Discard used wipe in trash. Do not flush [in toilet].

TO CLEAN AND DISINFECT: For visibly soiled surfaces, clean visible dirt [from the surface] first. [Attach a premoistened wipe to the mop head using the [velcro] [fasteners] provided.] Visibly wet floor with wipes. [Change wipe when soiled.] or [Replace with a fresh wipe once visibly soiled or no longer visibly wetting the surface.] Allow surface to remain visibly wet for 4 minutes. Let air dry. On average, one wipe will clean [10] [x] square feet of floor. For a larger area you may need to use more than one wipe. Discard used wipe in trash. Do not flush. Do not use to disinfect dishes, glassware or utensils. Do not use as a diaper wipe or for personal cleansing. Contact manufacturer of wood floors prior to use.

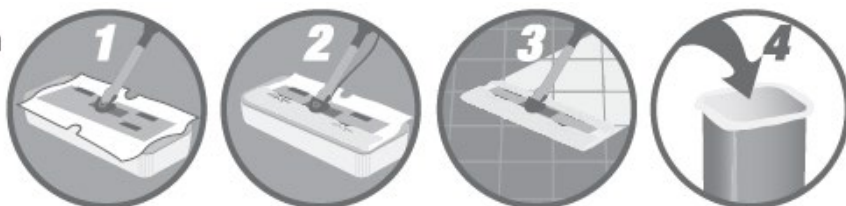
[Note: Not recommended for unpainted wood, natural marble or brass.]

[Do not use on unfinished, oiled or waxed wood, unsealed tiles or carpet.]

[Keep container flat and lid securely closed to keep cloths moist.]

{Optional representative graphic}

Use on
mop
head.



TO OPEN:

1. Cut off top of pouch with scissors.
2. Remove wipes from pouch.
3. Place wipes in plastic tub.
4. Discard empty pouch into trash.

TO USE WITH MOP:

1. Unfold top wipe in tub by pulling sides of the cloth over edges of tub.
2. Place sweeper on head.
3. Wrap wipe around head of sweeper.
4. Push edges of wipe into top of sweeper head.
5. Begin wiping. No rinsing required.
6. After use, remove soiled wipe and discard in trash. Do not flush.

{Note to reviewer: Nonrefillable container}

STORAGE AND DISPOSAL

Store in original container in areas inaccessible to children. Keep securely closed. Nonrefillable container. Do not reuse or refill this container. Discard empty container in trash or recycle (if available).

{Note to reviewer: Refillable container}

STORAGE AND DISPOSAL

Store in original container in areas inaccessible to children. Keep securely closed. Refillable container. [Reuse] [Refill] empty container only with **Lonza Disinfectant Wipes Plus** [refills]. Do not reuse this container except as described. If not refilling, discard empty container in trash or recycle (if available).

Footnotes:

¹Includes weight of absorbent wipe.

² For qualified claims insert some pathogens from pages 19-20.

Note to reviewer: *If a supplemental label is using the “Germs” claim, per the EPA Guidance on use of the term “Germs” in order to make a qualified “germ” claim the supplemental label must be a broad spectrum disinfectant and list additional claims against: Viruses and must bear disinfectant directions. The front panel of the label for a qualified claim must contain a designator (such as “”) that refers the user to the qualified statements that describes the type of germ the product is efficacious against.*

³Rinse toys with clean, potable water after disinfecting.

⁴On hard, non-porous, non-food surfaces

⁵When used according to the disinfection directions.

⁶When used according to the sanitization directions.

⁷Allow the surface to adjust to room temperature before disinfection.

⁸SARS-Related Coronavirus 2

⁹This product removes the following allergens: [cockroach debris] [,] [cockroach matter] [,] [cockroach particles] [,] [[cat] [dog] [pet] [dander] [hair]] [,] [dust mite debris] [,] [dust mite matter] [,] [dust mite particles] [,] [hair] [,] [household surface dust] [,] [pollen [particles] [from timothy grass]] [,] [residue from [burning materials] [fireplace soot] [cigarette smoke] [candles]] [,] [rodent feces] [,] rodent saliva

¹⁰ External surfaces only

{PACKET LABEL TO BE USED WITH MASTER CONTAINER LABEL}

LONZA DISINFECTANT WIPES PLUS

EPA. Reg. No. 6836-336

EPA. Est. No. *(insert EPA Est. No. here)*

Net Contents:

Net Weight:

[optional - wipe dimensions:] X x X [inches] [in.]

Active Ingredients:

Octyl decyl dimethyl ammonium chloride	0.0909%
Dioctyl dimethyl ammonium chloride.....	0.0364%
Didecyl dimethyl ammonium chloride.....	0.0545%
Alkyl (C ₁₄ , 50%; C ₁₂ , 40%; C ₁₆ , 10%) dimethyl benzyl ammonium chloride	0.1212%
Other Ingredients:.....	99.6970%
Total.....	100.0000% ¹

¹ Includes weight of absorbent wipe.

KEEP OUT OF REACH OF CHILDREN

CAUTION [PRECAUCIÓN]

See outer container for Precautionary Statements and Use directions

DISPOSAL: Dispose [wipe] [towelette] [Cloth] in trash after use. Discard empty [pouch] [packet] in trash.

Arxada, LLC

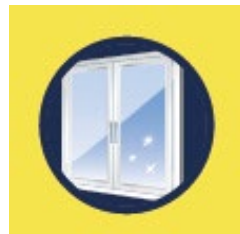
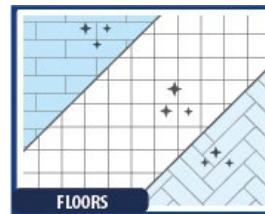
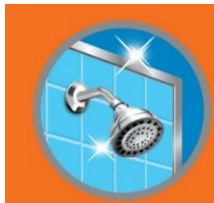
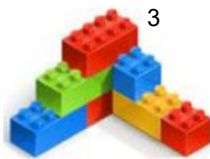
412 Mt. Kemble Ave., Suite 200S

Morristown, NJ 07960

{Note to reviewer: The following are optional graphics. The graphics may be presented as seen below or may differ slightly in graphic design but not intent on the market container label. Please refer to footnote 3 on page 26 regarding toys. Any final printed label containing an EPA-approved toy graphic will be required to include the text of footnote 3 about rinsing.}



{Note to Reviewer: Similar representative graphics may be added for the final printed label.}



{Note to reviewer: The following is an optional graphic that will be used to illustrate the scent.}



{Note to reviewer. Allowed on back or side panel only.}

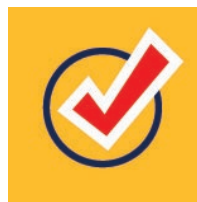


[NSF Listed]
(Insert 6-Digit NSF Listing Number here)

{Note to reviewer. The following may be used only if the supplemental registrant has obtained the appropriate certification.}



{Note to reviewer: The following are optional graphics that may be used to illustrate non-public health bacteriostatic claims for odor-causing bacteria.}





Preparing Material for Recycling

Information is provided to ensure the proper steps are taken to effectively recycle materials.

Rinse & Insert Lid	Empty & Replace Cap
Empty Before Recycling	Rinse Before Recycling
Rinse & Replace Lid	Recycle If Clean & Dry
See Website For Cap	Remove Label Before Recycling
Empty & Discard Sprayer	Empty & Reattach Sprayer
Empty & Discard Pump	Empty & Reattach Pump

The Multi-Component Labels

We want to be sure that you know how to recycle your whole package, not just a part of it! For a How2Recycle label like the one at right, each "tile" represents a different part of the package. This is really helpful for when you're trying to know how to recycle different parts of your package. How2Recycle labels are intended to be read left to right, based on which part of the packaging you encounter first.



How2Recycle

Information and locational instructions let you know if an item can be recycled traditionally or by other means:

Widely Recycled	Limited Recycling <small>* Not recycled in all communities</small>
Not Yet Recycled	Store Drop-Off

PAPER BOX	PLASTIC WRAP	PLASTIC TRAY

how2recycle.info
*Not recycled in all communities



Type of Recyclable Material

Lists what type of material the packaging is made from.

PLASTIC	PAPER
METAL	COATED PAPER
GLASS	MULTI-LAYER



Lists Recyclable Parts of Packaging

Information on what parts of the packaging needs to be recycled in this specific way.

BOTTLE	TRAY
INSERT	BOX
BAG	WRAP
CAN	FILM
POUCH	

{RECYCLING LOGO: The below graphics can be used to build a recycling logo. Any combination of top, middle, material, and bottom section can be used to build the logo. A recycling logo is optional and may be presented as shown below or may differ slightly in graphic design but not intent on the final marketed product label.}

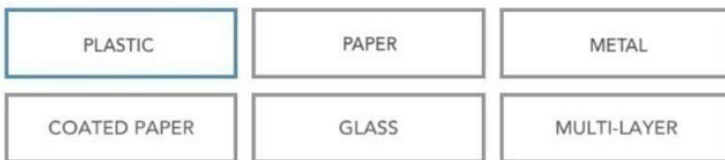
{TOP SECTION:}



{MIDDLE SECTION:}



{MATERIAL SECTION:}



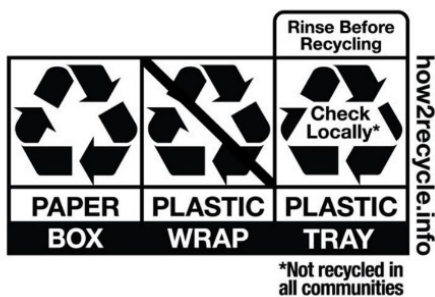
{BOTTOM SECTION:}

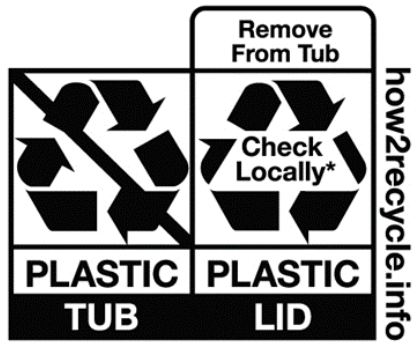


{OPTIONAL TEXT:}

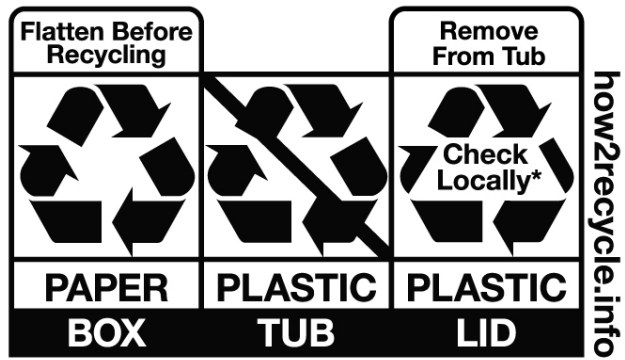
*Not recycled in all communities
how2recycle.info

{Examples of final logos built from above sections:}





***Not recycled in all communities**



***Not recycled in all communities**



***NOT RECYCLED IN ALL AREAS**



**THE FOLLOWING SECTIONS CONTAIN PROPRIETARY
LANGUAGE AND GRAPHICS.**

**THESE SECTIONS ARE ONLY AVAILABLE FOR
SUPPLEMENTAL REGISTRANTS APPROVED FOR ITS USE.**

{Note to reviewer: The following are optional proprietary graphics.}
{Section 1}



OTHER CLAIMS:

- 100% Satisfaction guaranteed or your money back.
- We welcome any questions you may have at [Target.com/comments](https://www.target.com/comments) or 1-800-910-6874
- Each year we give 5% of our profit to communities. See all the good we do together at [Target.com/Community](https://www.target.com/Community).
- Made for Target Brands, Inc.
- TM & ©XXXX Target Brands, Inc.

{Note to reviewer: The following are optional proprietary graphics.}
{Section 2}



{Note to reviewer: The following are optional proprietary graphics.}
 {Section 3}



Great Quality. Great Price. Guaranteed.

Our guarantee is our promise that you'll be fully satisfied with the quality of every Great Value product. If for any reason you aren't happy, we'll replace it or return your money. Whichever you prefer. All you need is the package. It's that simple. Guaranteed.

Tell us what you think... 1-877-505-2267 or online at walmart.com/greatvalue



Great Quality. Guaranteed.

Return the package for replacement or money back.
 1-877-505-2267 or visit us online at walmart.com



{Note to reviewer: The following are optional proprietary claims and graphics.}

{Section 4}

OTHER CLAIMS:

- Manufactured and Distributed by {Insert company name}

SANITIZATION CLAIMS:

{Note to reviewer: Below claim will only be used when Sanitizing directions are included on final label}

Lonza Disinfectant Wipes Plus [are] [99.9%] [effective against⁶] [Kills 99.9%⁶] [Removes 99.9%⁶] [Destroys 99.9%⁶]:

[Bacteria]

Salmonella enterica [Salmonella] [ATCC 10708]

SANITIZING [DEODORIZING]:

To sanitize [deodorize] hard, non-porous, non-food contact surfaces; wipe surface, using enough [wipes] [towelettes] [cloths] to allow treated surface to remain visibly wet for 15 seconds [for] [*Salmonella enterica*] [*Salmonella*] [ATCC 10708], [*Staphylococcus aureus*] [Staph] [ATCC 6538], [*Klebsiella pneumoniae*] [Klebsiella] [ATCC 4352], [*Campylobacter jejuni*] [ATCC 29428], [*Escherichia coli*] O157:H7 [*E. coli* O157:H7] and *Listeria monocytogenes*. Let surface dry. For visibly soiled surfaces, clean visible soil first.

Lonza Disinfectant Wipes Plus

[Proven to] kill[s] coronavirus⁸

[Proven to] kill[s] the virus⁸ that causes COVID-19

[Proven to] wipe out⁵ 99.9% coronavirus⁸

Kills coronavirus⁸ that causes COVID-19

Kills the coronavirus⁸ that causes COVID-19

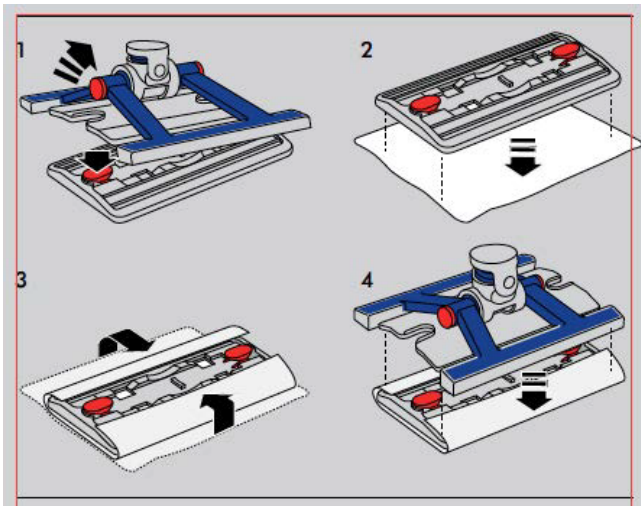
Kills the virus⁸ that causes COVID-19

Wipes out⁵ 99.9% of COVID-19-causing coronavirus⁸

Wipes out⁵ 99.9% of COVID-19-causing virus⁸

Wipes out⁵ 99.9% of the coronavirus⁸ that causes COVID-19

Wipes out⁵ 99.9% of the virus⁸ that causes COVID-19



*{Note to reviewer: The following is an optional proprietary graphic}
{Section 5}*



{Note to reviewer: The following is an optional graphic that will be used to illustrate the scent.}



{Note to reviewer: The following are optional proprietary graphics.}
{Section 6}



- ✔ item replaced
- ✔ money refunded



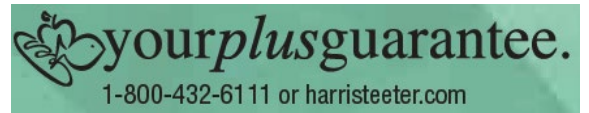
{Note to reviewer: The following are optional proprietary graphics.}
{Section 7}



{Note to reviewer: The following are optional proprietary graphics.}
{Section 8}



{Note to reviewer: The following are optional proprietary graphics.}
{Section 9}



{Note to reviewer: The following are optional proprietary claims and graphics. The graphics may be presented as seen below or may differ slightly in graphic design but not intent on the market container label. To be used by trademark holder only.}

{Section 10}



CLEANING CLAIMS:

- [PowerHex][PowerDot][Bounty®][Quilted][Cloth-like] Texture [Technology] for Better Cleaning
- [with the] [grease fighting] power of Dawn®
- 2[3][4][5][6][7]-in-1 *{Note to reviewer: The number of benefits chosen will match the number indicated}*: [Disinfects⁵][,] [+] [and] [Cleans][Scrubs] [Tough Messes][,] [+] [and] [Traps Grease][,] [+] [and] [Dissolves Soap Scum][,] [+] [and] [Kills⁵ [99.9% of] Germs²][,] [+] [and] [Breaks Down][Lifts] Dirt[,] [+] [and] [Sanitizes⁶][,] [+] [and] [Removes [More than] [99% of] [inanimate] Allergens⁹] [with] [PowerDot][PowerHex][Bounty® Quilted] [Texture]

SCENT NAMES:

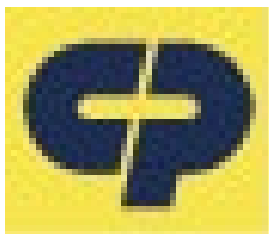
- Dawn Original [scent]
- Gain Original [Fresh] [scent]
- Gain Tropical Sunrise [scent]
- Febreze Linen & Sky [scent]
- Febreze Meadows & Rain [scent]
- Gain Moonlight Breeze [scent]

{Note to reviewer: The following are optional proprietary graphics.}
{Section 11}



{Note to reviewer: The following are optional proprietary graphics and may be presented as seen below or may differ slightly in graphic design but not intent on the market container label. To be used by trademark holder only.}

{Section 12}



{Note to reviewer: The following are optional proprietary graphics.}
{Section 13}



{Note to reviewer: The following is an optional proprietary graphic.}
{Section 14}



{Note to reviewer: The following are optional proprietary graphics.}
{Section 15}



{Note to reviewer: The following are optional proprietary claims and graphics.}
{Section 16}



OTHER CLAIMS:

- Made for Food Lion Brands.
- Foodlion.com
- Made for Hannaford Brands.
- Hannaford.com
- ©XXXX Ahold Delhaize Licensing Sàrl

{Note to reviewer: The following are optional proprietary graphics.}
{Section 17}



{Note to reviewer: The following are optional proprietary graphics.}
{Section 18}



{Note to reviewer: The following are optional proprietary graphics.}
{Section 19}



OUR PROMISE
QUALITY & SATISFACTION
100% GUARANTEED
OR YOUR MONEY BACK.

{Note to reviewer: The following are optional proprietary graphics.}
{Section 20}



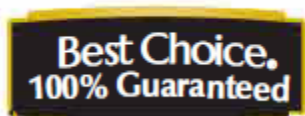
When you're Our Family, you're guaranteed to be satisfied. That's the promise behind Our Family® Guarantee. If you're not satisfied with the quality of any Our Family® brand product, simply return it to the store where purchased, and we'll refund your money AND replace it with a like item of the brand of your choice, free. That's our guarantee. **Because no matter the family, you're Our Family.™**



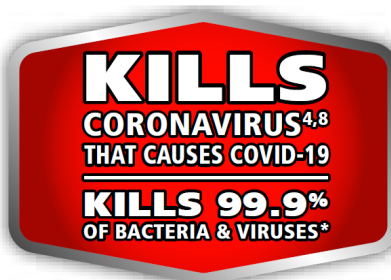
{Note to reviewer: The following are optional proprietary graphics.}
{Section 21}



{Note to reviewer: The following are optional proprietary graphics.}
{Section 22}



{Note to reviewer: The following are optional proprietary graphics.}
{Section 23}



{Note to reviewer: The following are optional proprietary graphics.}
{Section 24}



{Note to reviewer: The following are optional proprietary graphics.}
{Section 25}



The Supermarket Low Price Leader®



The Supermarket
Low Price Leader®



{Note to reviewer: The following are optional proprietary graphics.}
{Section 26}



{Note to reviewer: The following are optional proprietary graphics.}
{Section 27}



{Note to reviewer: The following are optional proprietary claims and graphics.}
{Section 28}



OTHER CLAIMS:

- We would love to hear about your Member's Mark experience! Visit us at: samsclub.com/membersmarkhelp

{Note to reviewer: The following is an optional proprietary graphic.}
{Section 29}



{Note to reviewer: The following is an optional proprietary graphic.}
{Section 30}

PRINCE & SPRING™

{Note to reviewer: The following are optional proprietary graphics.}
{Section 31}



{Note to reviewer: The following are optional proprietary graphics.}
{Section 32}



Like it or let us make it right.
That's our quality promise.
877-932-7948
essentialeveryday.com



{Note to reviewer: The following are optional proprietary claims and graphics.}
{Section 33}

amazon basics

OTHER CLAIMS:

- Alexa, reorder Amazon Basics Disinfecting Wipes

{Note to reviewer: The following is an optional proprietary graphic.}
{Section 34}

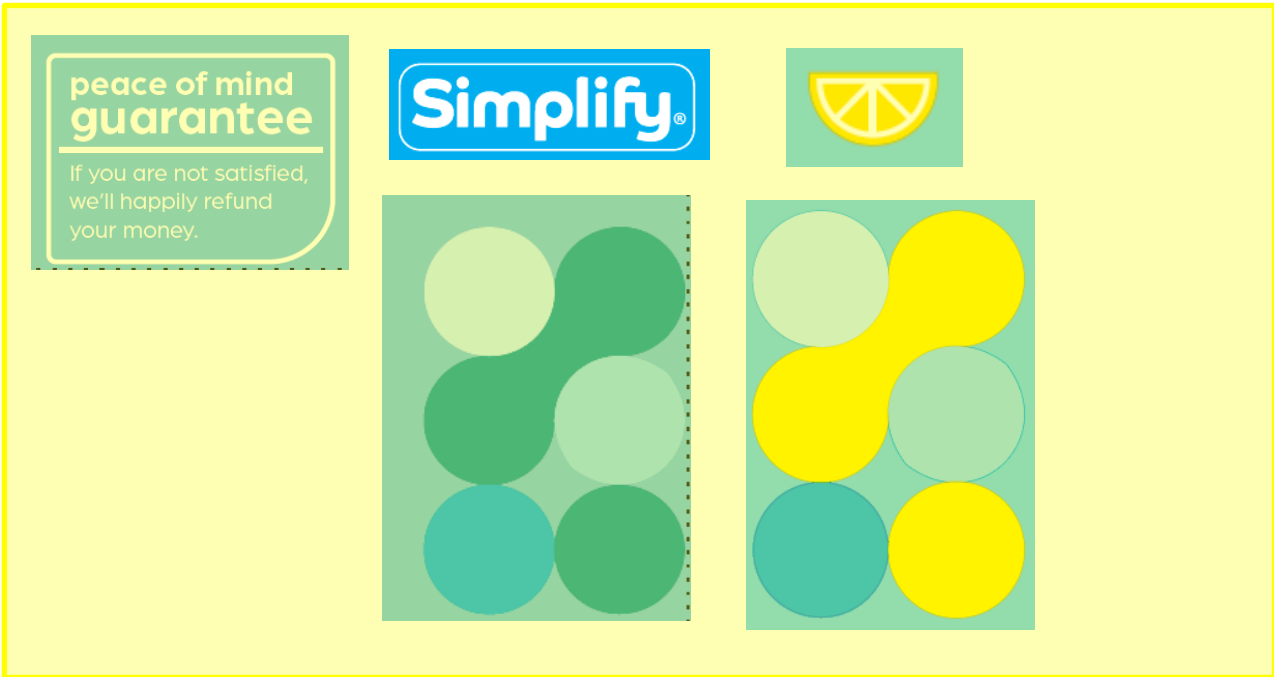


{Note to reviewer: The following are optional proprietary graphics. **Optional graphics in Black and White or Color.**}

{Section 35}



{Note to reviewer: The following is an optional proprietary graphic.}
{Section 36}



{Note to reviewer: The following is an optional proprietary graphic.}
{Section 37}



{Note to reviewer: The following is an optional proprietary graphic.}
{Section 38}



{Note to reviewer: The following is an optional proprietary graphic.}
{Section 39}

