



UNITED STATES ENVIRONMENTAL PROTECTION AGENCY  
WASHINGTON, DC 20460

OFFICE OF CHEMICAL SAFETY  
AND POLLUTION PREVENTION

December 8, 2020

Desiree Valentin  
Regulatory Specialist for,  
Lonza, LLC  
412 Mount Kemble Avenue, Suite 200S  
Morristown, NJ 07960

Subject: Notification per PRN 98-10 – To add graphics to the product labeling  
Product Name: Lonza Disinfectant Wipes Plus  
EPA Registration Number: 6836-336  
Application Date: November 10, 2020  
Decision Number: 567940

Dear Ms. Valentin:

The Agency is in receipt of your Application for Pesticide Notification under Pesticide Registration Notice (PRN) 98-10 for the above referenced product. The Antimicrobials Division (AD) has conducted a review of this request for its applicability under PRN 98-10 and finds that the action requested falls within the scope of PRN 98-10.

The label submitted with the application has been stamped “Notification” and will be placed in our records.

Should you wish to add/retain a reference to the company’s website on your label, then please be aware that the website becomes labeling under the Federal Insecticide Fungicide and Rodenticide Act and is subject to review by the Agency. If the website is false or misleading, the product would be misbranded and unlawful to sell or distribute under FIFRA section 12(a)(1)(E). 40 CFR 156.10(a)(5) lists examples of statements EPA may consider false or misleading. In addition, regardless of whether a website is referenced on your product’s label, claims made on the website may not substantially differ from those claims approved through the registration process. Therefore, should the Agency find or if it is brought to our attention that a website contains false or misleading statements or claims substantially differing from the EPA approved registration, the website will be referred to the EPA’s Office of Enforcement and Assurance.

Page 2 of 2  
EPA Reg. No. 6836-336  
Decision No. 567940

If you have any questions, you may contact Karen M. Leavy at (703)-308-6237 or via email at [Leavy.Karen@epa.gov](mailto:Leavy.Karen@epa.gov).

Sincerely,

A handwritten signature in black ink that reads "Karen M. Leavy, Esq.". The signature is written in a cursive style with a large initial "K" and a long, sweeping underline.

Eric Miederhoff  
Product Manager 31  
Regulatory Management Branch I  
Antimicrobials Division(7510P)  
Office of Pesticide Programs

Note to reviewer:

[Items in brackets [AAA] are optional and may/may not be included on final label]

{Items in braces {AAA} are for information purposes and will not appear on final label}

## LONZA DISINFECTANT WIPES PLUS

[One-Step<sup>4</sup>] and/or [Disinfectant<sup>5</sup>] and/or [Virucide\*] and/or [Sanitizer<sup>6</sup>]

{Note to reviewer: each scent below may also be represented by a graphic depicting the corresponding scent with the exception of apple which will be submitted to the Agency for review.}

FRESH / [SUMMER] CITRUS/ FLORAL/ MINT/ PINE / LEMON / WOODY/ LIME / MELON/ CLEAN / WATERFALL / [ULTIMATE] ORANGE / [SPARKLING] APPLE / INVIGORATING BREEZE / SPRING GARDEN / LAVENDER [FRESH] / GRAPEFRUIT / ORIGINAL / NEW CAR / OUTDOOR ESSENCE/[ULTRA FRESH] FRAGRANCE / SCENT / SCENTED

Kills Flu Virus\*<sup>4</sup>

Active Ingredients:

Octyl decyl dimethyl ammonium chloride.....	0.0909%
Dioctyl dimethyl ammonium chloride.....	0.0364%
Didecyl dimethyl ammonium chloride.....	0.0545%
Alkyl (C <sub>14</sub> , 50%; C <sub>12</sub> , 40%; C <sub>16</sub> , 10%) dimethyl benzyl ammonium chloride .....	0.1212%
Other Ingredients:.....	99.6970%
Total.....	100.0000% <sup>1</sup>

KEEP OUT OF REACH OF CHILDREN

**CAUTION [PRECAUCIÓN]**

See [left] [side] [right] [back] [bottom] panel for Precautionary Statements and First Aid

Manufactured by:

Lonza, LLC  
412 Mt. Kemble Ave., Suite 200S  
Morristown, NJ 07960

EPA Reg. No. 6836-336

EPA Est. No. (as indicated on container)

Net Contents: insert # [premoistened] [towelettes] [wipes] [disinfecting] [antibacterial] [cleaning] [wet] [multi-purpose] [touch-up] [pre-moistened cloths] [sheets]

Net Contents: (expressed as avoirdupois pounds and ounces)

[Minimum Wt.]

[optional: wipe dimensions:] X x X [inches] [in.]

[Barcode]

[DOT symbols]

[QR Code]

[Country of origin (insert country)]

[Manufactured in (insert country)]

{Note to Reviewer: for multi-packs}

[2][3][x]- [canister] [pack]

[[Bonus] Twin pack]

### NOTIFICATION

6836-336

The applicant has certified that no changes, other than those reported to the Agency have been made to the labeling. The Agency acknowledges this notification by letter dated:

12/08/2020

**PRECAUTIONARY STATEMENTS**  
**HAZARDS TO HUMANS AND DOMESTIC ANIMALS**

Caution. Causes moderate eye irritation. Avoid contact with eyes or clothing. Wash thoroughly with soap and water after handling and before eating, drinking, chewing gum, using tobacco or using the toilet.

**FIRST AID**

**If in eyes:** Hold eye open and rinse slowly and gently with water for 15-20 minutes. Remove contact lenses, if present, after first 5 minutes, then continue rinsing eye.

Call a poison control center or doctor for treatment advice. Have the product container or label with you when calling poison control center or doctor or going for treatment.

*{Optional Emergency contact information}*

*[For emergency information on (product, usage, etc.), call (1-XXX-XXX-XXXX), Monday through Friday, 9 a.m. to 5 p.m. After 5 p.m. call your poison control center at 1-800-222-1222.]*

{Note to reviewer: Pages 3-17 are considered optional marketing language. All designators (i.e. asterisks and numbers) used throughout the label may be interchanged as needed on final printed label.}

{Note to reviewer: The following claims containing "New" may only be used for a period of six months after EPA's approval of a revised or alternate formula, beginning when the product is first sold or distributed.}

- 2 New Wipes
- Introducing
- Introducing new
- New
- New and Improved!
- New [Convenient] [Amazing] Package
- New easy to dispense
- New easy-glide dispensing top
- New Easy [Start Lid] [Start Package] [Grab Lid]
- New EZ [to start lid] [start package] [Grab Lid]
- New larger [bigger]-sized wipe
- New Larger Size
- New More Scrubbing Power
- New Strong wipe for tougher [jobs] [messes]
- New Stronger Wipe
- New [thick] [textured] wipe
- New Top
- New tougher wipe for tougher cleaning [messes]
- New tougher wipe for [your] tough[er] jobs
- New Wipes
- [New] [Now] [less-residue] [low-residue] [low-streak] formula

#### **CLEANING CLAIMS:**

- [25%] [30%] [50%] more grease cleaning power
- [A] Clean you can trust
- [All] [Multi-purpose] kitchen [everyday] [daily] [touch-up] [cleaning]
- Clean more with less
- Clean surfaces at your fingertips
- Clean to a virtually streak-free shine
- Clean with just a wipe or a touch up
- Cleaning
- Cleaning just got a whole lot easier
- Cleans
- Cleans [away] [up] dirt, dust and hair
- Cleans [grease] better than ever
- Cleans faster because the [scrubbies] [texture] removes [stubborn] [stuck on] [dirt] [messes]
- Cleans more than ever
- Cleans things you never thought a wipe could
- Cleans to a [Sparkle] [Shine]
- Cleans what you can't see
- Convenience of a wipe [a cloth]
- Convenient
- Cuts through [tough] [dirt] [stains] [grime] [soils] [dried on stains] [dried on soils]
- Cuts Through [Tough] [Messes] [Grease] [Grime]
- [Everyday] [Regular] [Cleaning] Wipes
- [Everyday] [Regular] Cleaning
- [Everyday] [Regular] Wiping
- Extra Power for your tough cleaning jobs
- Extra Power wipe for cleaning extra tough [jobs] [messes]
- Fast drying; leaves no dull or sticky residue

#### **CLEANING CLAIMS (Cont.):**

- For [light touch ups] [quick clean-ups] [in one easy step]

- For a Powerful Clean
- For everyday messes
- For the quick touch ups, try **Lonza Disinfectant Wipes Plus**
- For when a regular wipe [just] can't get the job done
- Gets up stuck-on messes [so you don't have to get on hands and knees]
- Greasy messes
- [Great] [Designed] [Built] [Tough] [Textured Design] for your Toughest Messes
- [Great] [Designed] [Built] for Tough [Messes] [Cleaning]
- [Great] for [Spring] [Home] [Kitchen] [Bathroom] [Dorm] [Office] [Cart] [Car] Cleaning
- [Great] for Cleaning Your [Home] [Kitchen] [Bathroom] [Room] [Dorm] [Office] [Cart] [Car]
- Great for Cleaning a Classroom
- Great for cleaning around the toilet
- Great on kitchen grease
- Grimy messes
- Handles daily clean-ups with no need for additional sprays, sponges or buckets.
- Helps you finish cleaning fast [quickly]
- Leaves [no residue] [a streak free shine]
- Leaves your [house] [bathroom] [kitchen] fresh and clean
- Life doesn't stop for messes, [Wipe] [Clean] it up
- Life is Messy, [Wipe] [Clean] it up
- Low-streak formula is great on [glass] [mirrors] [stainless steel] [stainless]
- Makes [your job] [cleaning] [easier] [easy]
- More scrubbing power
- No [mixing] [spraying] [mess] [and / or fuss] [no muss]
- No more need to get on your hands and knees to [scrub] [or clean] stubborn spots.
- No rinsing required
- No sprays, no sponges, no mess
- Now cleaning is [faster] [easier] than [ever] [before]
- Now cleans better on grease
- Our most powerful [grease] [deep] cleaning wipe ever
- Our most powerful cleaning formula ever
- Picks up more messes than other wipes
- Powerful cleaner for kitchen and bath
- Powers through [tough messes] [the dirt] [the grime]
- Powers through tough messes
- Powers through tough messes all over the house
- Quick easy clean-ups.
- Removes the grime to give you more time [alt: Removes the grime so you have more time]
- Scrub-N-Wipe[s]
- [Scrubs] [cleans] better than ever
- Scrubs like no other [wipe]
- Sticky messes
- Streak-free
- The convenient way to keep your home looking "just cleaned"
- The wipe to use when you don't have much time
- Touch Up
- Tough cleaning [made easy] [made easier] [at your fingertips]
- Tough Cleaning at your Fingertips!
- Tough cleaning without the tough cleaning smell
- Tough Enough to Clean a Classroom
- Tough enough to do the bigger cleaning jobs.
- Traps & locks away [dirt] [grease] [messes] [crumbs] [hair] [lint] [dust] [dirty greasy messes]

### **CLEANING CLAIMS (Cont.):**

- Traps and locks away dirt
- Traps and locks grease and grime
- Use [daily] to clean bathroom soils such as soap, soap scum, toothpaste, hair spray, hair gel, cosmetics, shaving cream, hand or body lotion.
- Wipe down your seat. Bring [wet] [wipes] [or] [handi-wipes] to wipe down the [arm rests] [window areas] [seatbelt clasps] [and] [tray table] where you'll be sitting.
- Wipes are good for quick touchups
- Wipes Away [Tough] [Everyday] [Messes] [Grease] [Grime]
- Wipes Out [Tough] [Everyday] [Messes] [Grease] [Grime]
- Wipes Through [Tough] [Everyday] [Messes] [Grease] [Grime]
- Wipes to a [Clean] Shine [Sparkle]
- Wipes Up [Tough] [Everyday] [Messes] [Grease] [Grime]

### **FRESHNESS AND ODOR ELIMINATION CLAIMS:**

- Deodorizes
- Don't just mask odors – [eliminate][neutralize] them
- [Eliminates][Neutralizes] odors [and freshens] on contact
- For a cleaner, fresher [home] [house], great for [all around] the [house<sup>4</sup>] [home<sup>4</sup>] [kitchen<sup>4</sup>] [bath<sup>4</sup>]
- For a long lasting scent experience
- Fresh, clean scent
- Leaves a [light] [clean] [fresh] scent
- Leaves a clean, fresh scent
- Light, clean scent
- Long lasting scent
- Powers through odor
- Tough on odor
- Wipes out odors
- [With a] [fresh] [clean] [citrus] [lemon] fragrance

#### **Scent Names**

*{Note to reviewer: each block below also represents a graphic depicting the corresponding scent with the exception of citrus, apple, and berries, which will be submitted to the Agency for review.}*

- |                                                   |                         |
|---------------------------------------------------|-------------------------|
| • [with] [fresh scent] [scent name] [fresh scent] | • Linen & Sky           |
| • [scent names]                                   | • Rocky Springs & Cool  |
| • Meadows & Rain                                  | • Apple Spice & Delight |
| • Lavender Vanilla & Comfort                      | • Powder & Elegance     |
| • Vanilla Lavender & Comfort                      | • Blossoms & Breeze     |
| • Citrus & Light                                  | • Summer & Splash       |
| • Spring & Renewal                                | • Berries & Paradise    |
| • Seaside [Escape] [Scent]                        | • Herbal Lavender       |

### **CLEANING AND ODOR ELIMINATION CLAIMS:**

- A fresh take on tough cleaning
- An effective way to clean and deodorize against odor-causing bacteria.
- Eliminate dirt and [neutralize] odor
- Freshens [as you clean]
- Power[s] through [tough] [messes] [dirt] [and grease] and [help[s]] [eliminate[s]][neutralize[s]] odors

## ANTIBACTERIAL CLAIMS:

- 2 [steps] in 1- wipes, scrubs and disinfects<sup>5</sup> [sanitizes<sup>6</sup>] [so you finish faster]
- All around the house<sup>4</sup> [disinfecting] [cleaning formula]
- Antibacterial
- Antibacterial Formula
- [Antimicrobial] [antibacterial] [disinfecting] [sanitizing]
- Bacteria that grows in the shower/bathroom
- Clean and [Disinfect<sup>5</sup>] [Sanitize<sup>6</sup>] from Classroom to Playground [and everything in between<sup>4</sup>]
- [Clean and] [disinfect<sup>5</sup>] [sanitize<sup>6</sup>] in just [4] [four] minutes<sup>4</sup>
- [Clean and] [disinfect<sup>5</sup>] [sanitize<sup>6</sup>] [commonly touched] [household] surfaces<sup>4</sup>
- Cleans and [disinfects<sup>5</sup>] [sanitizes<sup>6</sup>] [without scratching] [surfaces<sup>4</sup>]
- Cleans and [disinfects<sup>5</sup>] [sanitizes<sup>6</sup>] in one [easy] step<sup>4</sup>
- Cuts [tough] grease, kills bacteria
- Daily [Surface<sup>4</sup>] [Disinfectant] [Sanitizer] [Cleaner]
- [Designed] [Built] for [disinfecting] [sanitizing] and [cleaning] [wiping] everyday
- [Designed] [Built] for Everyday [Disinfecting] [Sanitizing] [Cleaning] [Wiping]
- [Disinfect] [Sanitize] [Surfaces<sup>4</sup>] [Your House<sup>4</sup>] [Your Kitchen<sup>4</sup>] [Your Bathroom<sup>4</sup>] [Daily] [Everyday]
- [Disinfect] [Sanitize] [Your Desk<sup>4</sup>] [Your Office<sup>4</sup>] [Your Room<sup>4</sup>] [Daily] [Everyday]
- [Disinfecting] [Sanitizing] Formula
- [Disinfecting] [Sanitizing] Wipes
- [Disinfects] [Sanitizes]
- [Disinfects<sup>5</sup>] [Sanitizes<sup>6</sup>] [as it cleans] [and scrubs in one easy step<sup>4</sup>] [without [a] [the] [that] disinfectant smell]
- Disinfects surfaces<sup>4</sup> by killing [99.9%] SARS-Related Coronavirus 2 [SARS-CoV-2] [USA-WA1/2020] [in one-step<sup>5</sup>]
- Disinfecting wipes with scrubbing action
- [Easy] way to [clean and] disinfect<sup>5</sup> [in one-step<sup>4</sup>]
- Effective against SARS-Related Coronavirus 2<sup>4</sup> [SARS-CoV-2] [USA-WA1/2020] [in 4 minutes]
- [Effective against] [Disinfects] [Kills] [99.9%] SARS-CoV-2<sup>4</sup> [virus]
- [Effective against] [Disinfects] [Kills] [99.9%] SARS-CoV-2<sup>4</sup> virus, the cause of COVID-19
- Effective in sanitizing [your][household<sup>4</sup>][kitchen<sup>4</sup>][bathroom<sup>4</sup>][surfaces<sup>4</sup>]
- Effective in the presence of 5% serum contamination
- Effectively [disinfects] [sanitizes] common household surfaces<sup>4</sup>
- Everyday [Surface] [Disinfectant] [Sanitizer] [Cleaner]
- [Finally] a wipe that cleans and [disinfects] [sanitizes]
- Great for Everyday [Disinfecting] [Sanitizing] [Cleaning] [Wiping]
- Kills 99.9% of Germs<sup>2</sup> [Bacteria] [Viruses\*] [Bacteria and Viruses\*]
- Kills bacteria [while it cleans]
- Kills Cold & Flu Virus<sup>\*,4</sup>
- Kills common household bacteria
- Kills common [household][kitchen][bathroom] bacteria
- Kills coronavirus<sup>4,8</sup> that causes COVID-19
- [Kills] [Effective against] the virus<sup>4,8</sup> that causes COVID-19
- [Kills] [Eliminates] 99.9% SARS-Related Coronavirus<sup>4</sup> [SARS-CoV-2] [USA-WA1/2020] [causative agent of COVID-19] [the virus that causes COVID-19]
- [Kills] [Destroys] 99.9% germs<sup>2</sup> [in] [just] [4 minutes]
- [Kills] [Removes] [Destroys] (*Insert pathogen or pathogens other than avian influenza A from lists on pages 15-16*) [on [pre-cleaned] environmental surfaces]
- [Kills] [Removes] [Destroys] 99.9% of bacteria
- [Kills] [Removes] [Destroys] 99.9% of bacteria, leaves [leaving] surfaces<sup>4</sup> [clean and] disinfected
- [Kills] [Removes] [Destroys] Avian Influenza A H3N2 [and] H5N1 on pre-cleaned environmental surfaces<sup>4</sup>
- [Kills] [Fights] Germs<sup>2</sup> [Influenza Type A/Brazil, the Flu Virus<sup>4</sup>] [Bacteria] [Bacteria and Viruses\*] [Viruses\*]
- [Kills] [Fights] Wipe Out 99.9% of [Germs<sup>2</sup>] [Influenza Type A/Brazil, the Flu Virus<sup>4</sup>] [Bacteria] [Viruses\*]
- Kills germs<sup>2</sup>
- Kills Salmonella enterica, Methicillin-Resistant Staphylococcus Aureus & Flu Virus<sup>\*,4</sup>

## ANTIBACTERIAL CLAIMS (Cont.):

- Kills the coronavirus<sup>4,8</sup> that causes COVID-19

Lonza Disinfectant Wipes Plus

EPA Reg. No. 6836-336

EPA Notification Submission 2020-11-10



- Kills the virus<sup>4,8</sup> that causes COVID-19
- Kills [99.9% of] SARS-CoV-2<sup>4</sup>, which causes COVID-19
- Kills [Wipes Out] 99.9% [of] [Listeria monocytogenes] [MRSA] [Methicillin-Resistant Staphylococcus Aureus]
- Leaves surfaces<sup>4</sup> clean and disinfected
- [Proven to] kill[s] coronavirus<sup>4,8</sup>
- [Proven to] kill[s] the virus<sup>4,8</sup> that causes COVID-19
- [Proven to] wipe out<sup>5</sup> 99.9% coronavirus<sup>4,8</sup>
- Reduce risk of cross contamination between treated, hard non-porous surfaces
- Remove [99.9% of] [Bacteria] [Germs<sup>2</sup>] [from Your] [Surfaces<sup>4</sup>] [Home<sup>4</sup>] [Kitchen<sup>4</sup>] [Bathroom<sup>4</sup>] [Office<sup>4</sup>]
- [Sanitize][Disinfect] [airplane][airliner] [tray[s]] [tray table[s]]
- [Sanitize][Disinfect] any room in the house<sup>4</sup>
- [Sanitize][Disinfect] [baby][children's] toys<sup>3,4</sup>
- [Sanitize][Disinfect] [bathroom<sup>4</sup>][kitchen<sup>4</sup>] [sink[s]] [faucet[s]] [toilet[s]] [flush handle][seat] [light switch] [door][handle][knob]
- [Sanitize][Disinfect] [camping][hiking][boating] equipment<sup>4</sup>
- [Sanitize][Disinfect] [cell][mobile][phones]
- [Sanitize][Disinfect] [computers[s]][keyboards] [touchpads] [mouse]
- [Sanitize][Disinfect] [daycare][childcare] [facilities<sup>4</sup>]
- [Sanitize][Disinfect] [desk tops] [work tables] [work areas] [school desks] [shared equipment<sup>4</sup>]
- [Sanitize][Disinfect] [hotel][motel][public][shared] [TV][television[s]] [remote control[s]][remote[s]] [telephone[s]][phone[s]] [computer[s]][keyboard[s]] [fax machine[s]]
- [Sanitize][Disinfect] [shopping][grocery] cart[s] [handle[s]]
- [Sanitize][Disinfect] the hard, non-porous surfaces of [cabinets], [chairs], [counter[s]top[s]], [shower][door[s]][stalls], [bathtub[s]], [sink[s]], [vanities], [vanity][top[s]], [bathroom][fixture[s]][faucet[s]]
- [Sanitize][Disinfect] the hard, non-porous surfaces of [personal protective equipment<sup>4</sup>] [PPE<sup>4</sup>] [respirators<sup>4</sup>] [full face breathing apparatus<sup>4</sup>] [gas masks<sup>4</sup>] [goggles<sup>4</sup>] [face shields<sup>4</sup>] [hearing protection<sup>4</sup>] [ear covers<sup>4</sup>] [safety ear muffs<sup>4</sup>] [helmets<sup>4</sup>] [protective head gear<sup>4</sup>] [hard hats<sup>4</sup>]
- [Sanitize][Disinfect] the hard, non-porous surfaces of [sports][sporting][gym][athletic][workout] [equipment][machines]
- [Sanitize][Disinfect] the hard, non-porous surfaces of [wrestling][gymnastic][gym][athletic][yoga][tumbling] [mats][pads]
- [Sanitize][Disinfect] the [interior][exterior] of [common] [household][kitchen] appliances
- [Sanitize][Disinfect] [waiting rooms<sup>4</sup>] [public areas<sup>4</sup>]
- [Sanitize][Disinfect] [your][common] [household] [surfaces<sup>4</sup>][items][:] [such as] [high chairs<sup>4</sup>] [booster seats<sup>4</sup>] [strollers<sup>4</sup>] [car seats<sup>4</sup>] [cribs<sup>4</sup>] [tables] [tabletops] [counters] [countertops] [appliances] [sinks] [glazed tiles] [light switches] [door handles] [railings] [telephones] [trash][garbage][can[s]][receptacle[s]][bin[s]]
- The convenient way to [disinfect] [sanitize] your household surfaces<sup>4</sup>
- The smart [way to] clean [and disinfect<sup>5</sup>] [and sanitize<sup>6</sup>]
- The wipe that [disinfects] [sanitizes] while it cleans
- This product will clean and disinfect<sup>5</sup> hard, non-porous surfaces.
- Two in one action [cleans and [disinfects<sup>5</sup>] [sanitizes<sup>6</sup>] in one easy step<sup>4</sup>]
- Wipe Away<sup>5</sup> 99.9% of [Germs<sup>2</sup>] [Influenza Type A/Brazil, the Flu Virus<sup>4</sup>] [Bacteria] [Viruses\*]
- Wipes out<sup>5</sup> 99.9% of COVID-19 causing coronavirus<sup>4,8</sup>
- Wipes out<sup>5</sup> 99.9% of COVID-19 causing virus<sup>4,8</sup>
- Wipe out<sup>5</sup> 99.9% of germs<sup>2</sup>
- Wipes out<sup>5</sup> 99.9% of the coronavirus<sup>4,8</sup> that causes COVID-19
- Wipes out<sup>5</sup> 99.9% of the virus<sup>4,8</sup> that causes COVID-19
- Wipe Up<sup>5</sup> [Germs<sup>2</sup>] [Influenza Type A/Brazil, the Flu Virus<sup>4</sup>] [Bacteria] [Viruses\*]
- [With proven] Antibacterial Action

#### **SANITIZATION CLAIMS:**

- 99.9% effective against [Staphylococcus aureus [Staph]] [Klebsiella pneumoniae [Klebsiella]] [Campylobacter jejuni [Campylobacter] in [just] 15 seconds[!]]
- 99.9% effective against bacteria in [just] 15 seconds[!]
- Kills 99.9% of bacteria in [just] 15 seconds[!]
- Kills 99.9% of [bacteria] [Staphylococcus aureus [Staph]] [Klebsiella pneumoniae [Klebsiella]] [Campylobacter jejuni [Campylobacter] in [just] 15 seconds[!]

- Sanitize [commonly touched] [household] surfaces in [just] 15 seconds[!]
- Sanitizing Wipes
- [This product or product name] is an effective sanitizer against [Staphylococcus aureus [Staph]] [Klebsiella pneumoniae [Klebsiella]] [Campylobacter jejuni [Campylobacter]].

#### **H1N1 CLAIMS:**

- Kills Pandemic 2009 H1N1 influenza A virus<sup>4</sup>.
- Kills Pandemic 2009 H1N1 influenza A virus<sup>4</sup> (formerly called swine flu).

#### **USAGE CLAIMS:**

- For Homes, Institutional and Industrial Use
- For household surfaces<sup>4</sup> [all around the house] indoor and outdoor
- For use [at home], [away from home], [in public places] [on the go]
- Multi-purpose
- Multi-surface
- [Send] [Bring] [Wipes] [Me] to School
- Specially formulated for use in the [kitchen] [bathroom]

#### **VALUE CLAIMS:**

- [2] [Two] [1] [One] For You [1] [One] For School
- [Assorted] [Mixed] [Special] [Variety] [Multiple] [Multi] [Canister] [Bundle] [Pack]
- Back to School [Variety] [Special] [Canister] [Bundle] [Pack]
- Bonus Size
- Convenient [size]
- Convenience
- Family Pack
- Get it done with one
- Guaranteed [to clean longer] [you'll use fewer wipes to clean more]
- Large Size, Small Size, Bonus Pack
- More cleaning in one wipe
- More cleaning power per wipe
- One wipe goes a long way
- One wipe will get it done
- [Special] School [Variety] [Canister] [Bundle] [Pack]
- Spring Cleaning [Special] [Value] [Bonus] [Canister] Pack]
- Travel [Size] [pack]
- [2] [Two] Free Cloths
- Value
- Value Pack
- Value Size
- Variety Pack
- XX% More [Free] Wipes, Bonus Size, [Bonus] [Free] [27-ct] [35-ct] [XX-ct] Wipes, XX for the Price of YY.

#### **SURFACE SAFETY CLAIMS:**

- Non-abrasive
- Non-scratch[ing]
- Not recommended for use on computer or television monitor screens.
- These [wipes] [towelettes] [cloths] will not harm [most] surfaces.
- Will not scratch

**SUBSTRATE CLAIMS:**

- 2 sided wipe
- 2 Sides
- [2 Sides:] [scrubbing power for tough messes] [wiping side for quick cleanups]
- [Cloth-like texture] [Textured] for scrubbing power
- Cloth-like [textured] [strong]
- Cloths [Wipes] quickly remove dirt, spots and smudges
- Dual [action] [purpose] [scrubs] [side] [wipes]
- Grooved for [Grime] [Tough Messes] [Grease]
- Improved scrubbing texture
- [Long lasting] [substrate] [wipe] [towelette] [cloth] [material]
- [Our] toughest wipe ever
- Made with scrubbing fibers
- Premoistened
- [Premoistened] [wet] disinfecting [textured] [antibacterial] [wipes] [towelettes] [cloths]
- [Quilted Texture] [Textured] to [Scrub] [Power] [Fight] Through Tough Messes
- Scrubbing Action Wipes
- [Scrubbing] [Smooth] Side
- [Special] [Unique] 3-D Texture for Tough Messes
- [Strong] [Thick] wipe
- Strong wipe for Heavy Duty cleaning
- Strong wipe for tougher [jobs] [messes]
- Stronger Wipe
- [Substrate] [Wipe] [Towelette] [Cloth] [material] derived 100% from [wood pulp] [cotton] [cellulose] [recycled cellulose]
- [Substrate] [Wipe] [Towelette] [Cloth] [Material] [lasts a long time] [goes further] [lasts longer]
- [Textured cloth] gets up stubborn stuck on messes
- Textured [cloths] [towelettes] clean floors faster [and easier]
- Textured [Wipe] [cloth] [towelette] [for tough jobs] [for tough cleaning]
- Textured for better [cleaning] [scrubbing] power
- Textured to Pick Up Particles
- The wipe that is [strong] [durable] [thick] [heavy] enough to scrub [and] [clean]
- Thick [wipe], cloth-like texture
- Thicker
- Thicker than an ordinary wipe
- Thicker wipe [cushionyTHICK™]
- Thicker, cloth-like feel for tough messes
- Tough like a towel
- Tough [Textured] Wipes
- [Tough] [Thick] wipe[s] for tough [cleaning] [messes]
- Tough[er] wipe for tough[er] cleaning [jobs]
- [Unique] [Special] [Thick] [Quilted] Texture for Tough [Messes] [Cleaning]
- Wipe fabric made from 100% renewable resources
- With [Magic Lock] [Magic Scrub] [Trap n' Lock] [Magic Quilt] fiber[s]
- With a cloth-like 3D texture
- With extra cleaning power [wipes] [sheets] [cloths]
- With [extra] scrubbing power
- With extra strength [wipes] [sheets] [cloths]

*Note to reviewer: A representative graphic of a substrate may be added to the label. Only a graphic of the substrate actually being used can be added to the final printed label.*

**PACKAGING CLAIMS:**

- Better [package] [dispensing]
- Breakthrough package
- [Convenient] [Hassle-free] [One-hand] dispensing

### PACKAGING CLAIMS (Cont.):

- Dispenses better
- Dispenses Like A Tissue [Tough Like A Cloth [Towel]]
- Dispenses like a tissue, cleans like a cloth
- Easier dispensing
- Easy [dispensing] [Glide Lid]
- Easy dispense [lid] [package]
- Easy dispensing [and] [tough texture] [for the ultimate wipes experience]
- Easy [EZ] Dispenser
- [Easy] [EZ] start
- Easy to [open] [thread] [access lid] [dispense]
- Easy to use
- Easy-glide dispensing top
- [Eco-shape Canister]
- Energy Efficient Canister
- EZ dispensing Lid
- EZ [Easy] to use lid
- Fewer rips, bunches, and snags
- Great dispensing lid
- [Just like a tissue box] [Tissue box dispensing]
- Just [pull] [pop] clean and toss.
- No [more] [pinched fingers] [rips] [tears]
- One at a time [dispensing, like a tissue box]
- One wipe at a time dispensing
- Only use approved refill packs.
- Package breakthrough
- Pop up
- Pop and go
- Pop and Clean
- Portable
- Recyclable packaging
- Refill [size] [pack] [Refill for **Lonza Disinfectant Wipes Plus** container] [tub]
- [Regular] [and] [Everyday] Wipe Pack
- Specially designed package that easily dispenses one at a time

**{Note to reviewer: The following may only be used if the Supplemental Registrant has documentation to support these claims.}**

- [30][xx]% Thicker and Quilted Texture [for Tough] [Messes] [Cleaning]
- [30%] thicker wipes
- Converted with [100%] [xx%] wind energy
- Less Oil Consumption], [Landfill Waste], [Production Energy], [and] [Freight Energy]
- [Made with] xx% less plastic
- [Made with] xx% less plastic [than similar size containers][than previous[ly] used container[s]]
- Package contains xx% post-consumer waste
- Package contains xx% recycled materials
- Package is 100% recyclable
- Packaged with 100% [xx%] wind energy
- Packaging contains xx% [post-consumer waste] [recycled materials]
- Produced with [Wind][Solar] Energy
- [Substrate] [Wipe] [Towelette] [Cloth] composed of 100% [xx%] recycled materials
- [Substrate] [Wipe] [Towelette] [Cloth] composed of 100% [xx%] renewable materials
- The product was manufactured with 100%[xx%] [Wind] [Solar] Energy
- [This product was] [Produced] [Manufactured] with [100%] [xx%] [wind] [solar] energy
- Wipe fabric made from 100% renewable resources

### FLOOR MOP CLAIMS:

Lonza Disinfectant Wipes Plus  
EPA Reg. No. 6836-336  
EPA Notification Submission 2020-11-10

- Fits [insert name of mop]
- Fits Lysol® Quick Clean & Swiffer® Tools.
- Fits Swiffer®
- Fits Swiffer® Mop-Head
- Fits Swiffer® or Pledge Grab-It® Mop Heads
- For Mopping

*LYSOL® is a registered trademark of Reckitt Benckiser Inc.*

*SWIFFER® is a registered trademark of the Proctor & Gamble Company*

*PLEDGE GRAB-IT® is a registered trademark of S.C. Johnson & Son Inc.*

**OTHER CLAIMS:**

- [After use], just toss wipe away [in trash][in garbage].
- Assembled in the USA
- Best if used by {insert date}
- Call (Insert phone number)
- Cleaning Advice? Visit [www.mrcclean.com](http://www.mrcclean.com)
- Clear drying formula
- Comments?
- Contains No Phosphate
- Do not use as a diaper wipe or for personal cleansing.
- Do not use for personal cleansing.
- Fragrance-free
- If you are not completely satisfied with this product, return it for a refund or replacement.
- No harsh scent
- Not for sale [or use] after {insert date}
- Quality Guaranteed
- Questions?
- Ready to Use
- Save time with [this product or product name][!]
- Saves steps
- Saves Time
- This product contains no [phosphates or] phosphorous [compounds].
- Use by {insert date}

**Lonza Disinfectant Wipes Plus:**

- deliver non-acid disinfectant and cleaning performance
- deodorizes by killing microorganisms [bacteria] that cause offensive odors.
- [improves labor results by] effectively controls [controlling] malodors.
- will disinfect<sup>5</sup>, clean and deodorize surfaces in rest rooms and toilet areas, behind and under sinks and counters, garbage cans and garbage storage areas, and other places where bacterial growth can cause malodors.
- is formulated for use in daily maintenance programs with a balance of detergents and malodor counteractants that deliver effective cleaning, disinfecting and malodor control.
- is a complete, chemically balanced disinfectant
- will not leave grit or soap scum.
- is a [one-step<sup>4</sup>] disinfectant<sup>5</sup> cleaner that is effective against a broad spectrum of bacteria when used as directed.
- is a proven "one-step<sup>4</sup>" disinfectant<sup>5</sup> - cleaner which is effective in the presence of 5% serum contamination.
- Kills [kitchen] [bathroom] [household] bacteria.
- Kills common household bacteria.
- Kills bacteria
- help you accomplish things you never thought a wipe could do
- [wipes] [cloths] [sheets] help you to accomplish things you never thought a wipe could do
- [help] take the hassle out of dispensing disinfecting wipes. The Easy-Glide Lid dispenses wipes one-at-a-time, like a tissue-box, so you get the number of wipes you want with no pinched fingers, [torn wipes], [or] [jammed lids]. Plus they kill bacteria to keep your [family's] home [clean]. Use it on bathroom and kitchen surfaces like countertops, appliances, door handles, light switches, toilets, sinks, and tubs.
- are designed for your toughest tasks. They are [thick and strong] [thicker and stronger] to stand up to [tough] [your toughest] messes, and they have a cloth-like texture for extra scrubbing power. Plus they kill bacteria to [help] keep your [family's] [home] [clean]. Try it [them] on [your] tough [toughest] messes in the kitchen and bathroom, like baked-on grease on your stove [top], sticky messes on your counters, and built-up grime on your bathroom sinks.

Cross-contamination is of major [housekeeping] concern. **Lonza Disinfectant Wipes Plus** have been formulated to aid in the reduction of cross-contamination between treated surfaces in the home, schools, institutions and industry.

**Use Lonza Disinfectant Wipes Plus:**

- in federally inspected Meat & Poultry Plants as a disinfectant on all surfaces<sup>4</sup> in inedible product processing areas, non-processing areas and / or exterior areas.
- as a disinfectant on hard, nonporous surfaces.
- in kitchens, bathrooms and other household areas.
- to clean and disinfect<sup>5</sup> finished floors, sinks and tubs.
- for non-scratch cleaning of showers and tubs, shower doors and curtains, fixtures and exterior toilet bowl surfaces.
- to clean and disinfect<sup>5</sup> non-porous personal [safety] [protection] equipment, protective headgear, hard hats, half mask respirators, full face breathing apparatus, gas masks, goggles, spectacles, face shields, silicone rubber or PVC hearing protectors and vinyl covered ear muffs. Rinse all equipment that comes in contact with skin before reuse with clean warm water [about 120°F], and allow to air dry. [Precaution: Cleaning at 120°F temperature will avoid overheating and distortion of the personal [safety] [protection] equipment that would necessitate replacement.
- to clean and disinfect<sup>5</sup> hard non-porous surfaces of gym equipment, exercise machines, wrestling mats and gymnastic equipment.

[Insert Brand name] is registered in the United States and Trademark Office to [Insert Company Name].

[Insert Brand name] is a registered trademark of [Insert Company Name]

{Note to reviewer: The following is considered optional marketing language. Each item below also represents a graphic depicting the corresponding area of use. The graphics will only represent individual objects or outsides or insides of buildings as described below. No people, animal, or food will be depicted in graphics.}

**[AREAS OF USE:]**

Use **Lonza Disinfectant Wipes Plus** in:

Bathrooms  
Children's room  
Homes [households]  
Kitchens  
Living room

Dental offices  
Hospitals  
Medical Offices  
Nursing homes

Day care centers  
Nurseries

Bars  
Cafeterias  
Convenience stores  
Food processing plants  
Food storage areas  
Institutional kitchens  
Restaurants  
USDA inspected food processing facilities

Athletic facilities  
Barber shops  
Business and office buildings  
Colleges  
Correctional facilities  
Dressing rooms  
Exercise facilities  
Factories  
Family Rooms [Dens]  
Health clubs

Hotels  
Institutional facilities  
Institutions  
Laundry rooms  
Locker rooms  
Motels  
Playrooms  
Prisons  
Public facilities  
Public rest rooms  
Salons  
Schools  
Shower and bath areas  
Sick rooms

Camp grounds  
Play ground equipment

Airplanes  
Airports  
Ambulances  
Boats  
Buses  
Campers  
Cars  
Emergency [Police] [EMS] [Fire] [Rescue] vehicles  
Mobile homes  
Ships  
Taxis  
Trailers  
Trains  
Transportation terminals

Non-Food Contact Sanitizing Use Areas: Homes, Schools, transportations, airplanes, trains, automobiles, office buildings, dairies, meat processing plants, food processing areas, food handling areas, bars, restaurants, healthclubs, gyms, grocery stores, weight rooms, exercise rooms.



{Note to reviewer: Each item below also represents a graphic depicting the corresponding type of surface. No people, animal, or food will be depicted in graphics. Only exteriors of microwaves and refrigerators will be depicted. Toy graphics will be submitted to Agency for review.}

**[TYPES OF SURFACES:]**

[Use **Lonza Disinfectant Wipes Plus** on washable hard, nonporous surfaces of:]

{or}

[This product] will clean and disinfect<sup>5</sup> washable hard, nonporous surfaces of:

Appliances	Toilet seats
Bathroom fixtures	Toys <sup>3</sup>
Bathtubs [Fiberglass]	Tub walls
Cabinets	Tubs
Cages	Tiles, glazed
Car seat	Walls
Chairs	
Computer keyboards	Non-critical medical device surfaces:
Counters [countertops] [Bathroom] [Kitchen]	Beds [Medical] [Hospital]
Cupboards	Bed frames
Desks	Bed rails
Diaper changing [tables][counters]	Crutches
Diaper pails	Defibrillators
Doorknobs	Gurneys
Equipment tables	Non-critical [hospital] [medical] equipment surfaces
Faucets	[Medical] Examining tables
Faucet Handles	[Medical] [Hospital] Lamps
Floors	Rescue tools
Finished floors	Resuscitators
Garbage cans	[Medical] [Hospital] Scales
Glass	Stands
Highchairs	Stretchers
Lab benches	Stethoscopes
Linoleum	Walkers
Light switches	Wheel chairs
Laminate flooring	Ultra-sound transducers and equipment
Microwave ovens - exteriors	
Non-Wooden Outdoor [patio] furniture except cushions and wood frames	Other hard nonporous surfaces made of:
Refrigerators - exteriors	Acrylic
Refrigerated storage and display equipment <sup>7</sup>	Finished woodwork
Sealed floors	Formica <sup>®</sup>
Showers	Glass
Shopping cart handles	Glazed ceramic
Shower [stalls] [walls]	Glazed enameled surfaces
Sinks [bathroom, kitchen]	Glazed porcelain
Storage areas	Metal
Stoves <sup>7</sup> [stovetops <sup>7</sup> ]	Plastic [such as polystyrene or polypropylene]
Tables, [picnic tables]	Sealed granite
Tanning Beds	Sealed marble
Telephones	Sealed quartz
Exterior Toilet bowl surfaces	Sealed stone
	Stainless steel
	Upholstery- vinyl and plastic

*Formica<sup>®</sup> is a registered trademark of the Diller Corporation*

Note: Do not use on unpainted wood, natural marble or brass.



**Lonza Disinfectant Wipes Plus** are a one-step disinfectant<sup>4,5</sup> and Bactericide [tested according to the modified Germicidal Spray test] in the presence of 5% organic serum against:

{or}

**Lonza Disinfectant Wipes Plus** [are effective against<sup>5</sup>] [Kills<sup>5</sup>] [Removes<sup>5</sup>] [Destroys<sup>5</sup>]:

[Bacteria:]

*Staphylococcus aureus* [Staph] [ATCC 6538]

*Salmonella enterica* [Salmonella] [ATCC 10708]

*Pseudomonas aeruginosa* [Pseudomonas] [ATCC 15442]

*Acinetobacter baumannii* [ATCC BAA-1709]

*Burkholderia cepacia* [ATCC 25416]

*Campylobacter jejuni* [Campylobacter] [ATCC 29428]

*Corynebacterium ammoniagenes* [ATCC 6872]

*Enterobacter aerogenes* [ATCC 13048]

*Enterococcus faecalis* [Enterococcus] [ATCC 29212]

*Enterococcus faecalis*- Vancomycin Resistant [VRE] [ATCC 51575]

*Escherichia coli* [E. coli] [ATCC 11229]

*Escherichia coli* O157:H7 [E. coli O157:H7] [ATCC 35150]

ESBL *Escherichia coli* – [Extended spectrum beta-lactamase producing E. coli] [ATCC BAA-196]

*Klebsiella pneumoniae* [Klebsiella] [ATCC 4352]

*Klebsiella pneumoniae* (NDM-1) [New Delhi metallo-beta-lactamase 1] [CDC 1000527]

*Legionella pneumophila* [ATCC 33153]

*Listeria monocytogenes* [ATCC 19117]

*Salmonella schottmuelleri* [Salmonella] [ATCC 8759]

*Salmonella typhi* [Salmonella] [ATCC 6539]

*Serratia marcescens* [Serratia] [ATCC 14756]

*Shigella dysenteriae* [Shigella] [ATCC 11835]

*Staphylococcus aureus* - Community Associated Methicillin-Resistant [CA-MRSA] [NRS384] [USA300]

*Staphylococcus aureus* - Community Associated Methicillin-Resistant [CA-MRSA] [NRS123] [USA400]

*Staphylococcus aureus* - Methicillin-Resistant [MRSA] [ATCC 33592]

*Staphylococcus aureus* - Multi-Drug Resistant [resistant to tetracycline (Tc), penicillin (Pc), streptomycin (Sm) and erythromycin (Em) and susceptible to chloramphenicol (Cm) *in vitro*] [ATCC 14154]

*Staphylococcus aureus*-Vancomycin Intermediate Resistant – [VISA] [CDC HIP 5836]

*Streptococcus pyogenes* [Strep] [a cause of scarlet fever] [ATCC 14289]

*Vibrio cholerae* [ATCC 14035]

[Viruses:]

\*Hepatitis C Virus [HCV] [Oregon C24v-genotype 1 Strain]

\*Herpes Simplex Virus Type 1 [HSV-1 Sabin]

\*Herpes Simplex Virus Type 2 [HSV-2 Sabin]

\*HIV-1 [AIDS Virus] [Strain HTLV IIIB]

\*Human Coronavirus [ATCC VR-740, Strain 229E]

\*Influenza Type A Virus / Brazil [Influenza] [[the] Flu [Virus]] [A/Brazil/11/1978]

\*Influenza A Virus H1N1 [ATCC VR-1469. Strain A/PR/8/34]

[\*2013] Influenza A Virus (H7N9) [A/Anhui/1/2013, Centers for Disease Control and Prevention CCID/NCIRD/ID/MVVB]

\*Respiratory Syncytial Virus [RSV] [ATCC VR-26, Strain Long]

\*Rotavirus [Diarrhea-causing virus]

\*SARS Associated Coronavirus [SARS] [cause of Severe Acute Respiratory Syndrome] [CDC#200300592, ZeptoMetrix]

\*SARS-Related Coronavirus 2 [SARS-CoV-2] [cause of COVID-19]

\*Vaccinia Virus [Pox Virus] [Wyeth Strain]

[Animal Viruses:]

Avian Influenza Virus H3N2 [ATCC VR-2072]

Avian Influenza Virus H5N1 [CDC # 2006719965]

Canine Distemper Virus [ATCC VR-128, Strain Lederle]

Newcastle's Disease Virus [ATCC VR-108 Strain B1, Hitchner or Blacksburg]

Pseudorabies Virus [ATCC VR-135, Strain Aujeszky]

Lonza Disinfectant Wipes Plus

EPA Reg. No. 6836-336

EPA Notification Submission 2020-11-10

{Note to reviewer: Below claims will only be used when Sanitizing directions are included on final label}  
**Lonza Disinfectant Wipes Plus** [are] [99.9%] [effective against<sup>6</sup>] [Kills<sup>6</sup>] [Removes<sup>6</sup>] [Destroys<sup>6</sup>]:

[Bacteria]

*Staphylococcus aureus* [Staph] [ATCC 6538]

*Klebsiella pneumoniae* [Klebsiella] [ATCC 4352]

*Campylobacter jejuni* [ATCC 29428]

*Escherichia coli* O157:H7 [E. coli O157:H7] [ATCC 35150]

*Listeria monocytogenes* [ATCC 19117]

{Note to Reviewer: These statements for claims against enveloped and large, non-enveloped viruses, shall not appear on marketed (final print) product labels.}

### **EMERGING VIRAL PATHOGENS**

This product qualifies for emerging viral pathogen claims per the EPA's 'Guidance to Registrants: Process for Making Claims Against Emerging Viral Pathogens not on EPA-Registered Disinfectant Labels' when used in accordance with the appropriate use directions indicated below.

This product meets the criteria to make claims against certain emerging viral pathogens from the following viral category[ies]:

-Enveloped Viruses

For an emerging viral pathogen that is a/an...	...follow the directions for use for the following organisms on the label:
Enveloped virus	Rotavirus, Strain WA (TC Adapted), ATCC VR-2018

**[Lonza Disinfectant Wipes Plus]** has demonstrated effectiveness against viruses similar to **[name of emerging virus]** on **hard, non-porous surfaces**. Therefore, **[Lonza Disinfectant Wipes Plus]** can be used against **[name of emerging virus]** when used in accordance with the directions for use against **Rotavirus** on **hard, non-porous surfaces**. Refer to the **[CDC or OIE]** website at **[pathogen-specific website address]** for additional information.

OR

**[Name of illness/outbreak]** is caused by **[name of emerging virus]**. **[Lonza Disinfectant Wipes Plus]** kills similar viruses and therefore can be used against **[name of emerging virus]** when used in accordance with the directions for use against **Rotavirus** on **hard, non-porous surfaces**. Refer to the **[CDC or OIE]** website at **[website address]** for additional information."

*{Note to reviewer: Representative graphic of wipe tub and/or hand pulling out wipe fabric may be added to the label}*

*{For canister}*

**To Open Package:**

Remove cover. Pull up [towelette] [wipe] [cloth] corner from center of roll. Thread through hole in the cover. Replace cover. Open center cap on cover to remove wipe. When not in use [When not using], close center cap [securely] to prevent moisture loss.

or *{For carton or tub}*

**To Open Package:** Open cover and slowly peel back label on pouch. Remove [Pull out] [wipe] [towelette] [cloth] as needed. To retain moisture, reseal [pouch] [bag] by firmly pressing seal back on the [pouch] [bag] and close [carton or tub] cover.

*{For Tub Without Pouch}*

**To Open Package:** Open cover and slowly peel back label. Remove [Pull out] [wipe] [towelette] [cloth] as needed. To retain moisture, [reseal] [reclose] by firmly pressing and close [tub] cover.

or *{For refill, pouch or bag:}*

**To Open Package:**

[Slowly] peel back the label [open seal]. Remove [Pull out] [wipe] [towelette] [cloth] as needed. To retain moisture, reseal [pouch] [bag] by firmly pressing seal back on the [pouch] [bag]

or

**To Open Package:**

[Tear] [Cut] open wipe [pouch] [bag] [along dotted line]. Remove canister lid and place [bag with] roll into empty canister. Locate wipe [edge] at center of roll and thread wipe through canister opening [at angle]. Do not push finger through opening. Replace lid on canister and close tightly. Finish pulling wipe through opening. Wipes will feed automatically

or *{for the Travel Pack size}*

**To Open Package:** [Open cover and] slowly peel back label. [Pull out] [Remove] [wipe(s)] [towelette(s)] [cloth(s)] as needed. [Reseal label] to retain moisture [close cover].

or **To Open Package:** Open ziplock [Tear edge of pack]. [Pull out] [Remove] [wipes] [towelettes] [cloths] as needed. Reseal ziplock to retain moisture.

or *{for the single cloth or sample pack:}*

**To Open Package:** Tear [pouch] open [at top edge of pouch] [at tear notch] [along dotted line] [where indicated] [edge of pack]. [Pull out] [Remove] [Wipe] [Towelette] [Cloth].

*{For product supplied in a single use pouch with a folded towellete, include the following:}*

Unfold [Wipe] [Towelette] [Cloth]

or

**To Open Package:** [Remove package seal[s]] [Remove safety seal[s]] [Flip] Open lid. To remove first wipe [sheet] [wet cloth] [cloth] pull up on wipe and remove wipe through [dispensing] opening [wavy dispensing opening] [orifice]. [The next wipe will pop up automatically]. [Always] close [snap] lid securely between uses [to retain moisture].

or

**To Open Package:** [Remove package seal[s]] [Remove safety seal[s]]. Open [Flip open lid [package]]. To start [remove] [first] wipe [sheet] [wet cloth] take the edge of wipe from large opening to the small dispensing opening and pull up. [The next wipe [sheet] [wet cloth] [cloth] will pop up automatically.] [Always] close [snap] lid securely between uses [to retain moisture].

or

**To Open Package:** Open Lid. To start wipes, pull up on wipe and move wipe into the small dispensing opening [orifice] [aperture] [hole] [wave] and [pull sheet up to remove wipe] remove wipe. [The next wipe [sheet] [wet cloth] will pop up automatically]. [Always] close [snap] lid securely between uses [to retain moisture].

*or*

**To Open Package:** Flip open[up] the lid[cover][top][cap][dispensing lid]. Thread the wipe [first wipe][cloth][first cloth][sheet] through the dispensing lid and pull up to remove wipe from package. The next wipe [sheet][cloth] pops up automatically. Close lid securely between uses to retain moisture[prevent moisture loss].

*or*

**To Open Package:** Press the three [3] ridges with your thumb and push up on the cap[top][lid] to open[lid]. To remove wipe [sheet] [wet cloth] [cloth] [towelette] pull up on wipe and remove wipe through [dispensing] opening [wavy dispensing opening] [orifice]. [The next wipe will pop up automatically].

*or*

**To Open Package:** Press the three [3] ridges with your thumb and push up on the cap[top][lid] to open[lid]. Thread the wipe [sheet] [wet cloth] [cloth] [towelette] through the dispensing lid and pull up to remove wipe from package. The next wipe will pop[pull] up automatically. [Always] Close [snap] lid securely between uses [to retain moisture].

*or*

**To Open Package:** Press the three [3] ridges with your thumb and push up on the lid to open. Thread the wipe through the dispensing lid and pull up to remove wipe from package. The next wipe will pop up automatically. Close lid securely between uses to retain moisture.

*or*

**To Open Package:** Push the area marked ["Press"] ["Push"] ["Press Here"] ["Push Here"] with your thumb and push up on the lid to open. Thread the wipe through the dispensing lid and pull up to remove wipe from package. The next wipe will pop up automatically. Close lid securely between uses to retain moisture.

*or*

**To Open Package:** Open dispenser and top of bag. Pull out the first wipe approximately 6 to 8 inches from the center of the roll. Place the entire bag inside of dispenser. Thread the wipe through the opening on the dispenser lid. Close the lid to retain moisture.

**DIRECTIONS FOR USE:**

It is a violation of Federal law to use this product in a manner inconsistent with its labeling.

Do not use as a diaper wipe or for personal cleansing.

This is not a baby wipe[!]

Do not flush [in toilet].

For plastic and painted surfaces, spot test on an inconspicuous area before use.

[This product or product name] will not harm most surfaces: including acrylic, sealed fiberglass and vinyl.

Do not use on unpainted wood.

[Note: Not recommended for unpainted wood, natural marble or brass.]

**TO CLEAN AND DEODORIZE:**

Wipe surface with [wipe] [towelette] [cloth] [sheet]. Let air dry. Discard used [wipe] [towelette] [cloth] [sheet] in trash. Do not flush [in toilet].

**[TO] CLEAN [CLEANING] AND DISINFECT [DISINFECTION / VIRUCIDAL\* DIRECTIONS]:**

Wipe hard, nonporous-surface with [wipe] [towelette] [cloth] [sheet] until surface is visibly wet. [Use enough wipes to thoroughly wet surfaces.] [Use [enough] [extra] wipes to keep surfaces [visibly] wet for 4 minutes.] [Keep surfaces [visibly] wet for 4 minutes.] [Wipe surface and let it remain [visible] wet for 4 minutes.] Allow surface to remain wet for 4 minutes. {Note to reviewer: if using claims for Rotavirus, the following sentence will be required:} **[For Rotavirus, treated surfaces must remain wet for 10 minutes.]** [Let air dry.] [[Let] Permit surface to [air] dry.]

If surfaces are visibly dirty, clean first with another [wipe] [towelette] [cloth] [sheet] before disinfecting.

Discard used [wipe] [towelette] [cloth] [sheet] in trash. Do not flush [in toilet].

Rinse food contact surfaces with clean, potable water after disinfecting. Do not use to disinfect dishes, glassware or utensils.

**Mold and mildew stain control, Lonza Disinfectant Wipes Plus** will effectively inhibit the growth of mold and mildew and the odors caused by them when applied to hard, nonporous surfaces. Wipe surface and let it remain [visibly] wet for 4 minutes. Repeat treatment every seven days, or more often if new growth appears.

**\*KILLS HIV ON PRE-CLEANED ENVIRONMENTAL SURFACES / OBJECTS PREVIOUSLY SOILED WITH BLOOD / BODY FLUIDS** in health care settings or other settings in which there is an expected likelihood of soiling of inanimate surfaces / objects with blood or body fluids, and in which the surfaces / objects likely to be soiled with blood or body fluids can be associated with the potential for transmission of Human Immunodeficiency Virus Type 1 [HIV-1] [associated with AIDS].

**Special Instructions for Cleaning and Decontamination against HIV-1 On Surfaces / Objects Soiled With Blood / Body Fluids.**

**Personal protection:** Clean-up must always be done wearing protective gloves, gowns, masks and eye protection.

**Cleaning procedure:** Blood and other body fluids containing HIV must be thoroughly cleaned from surfaces and objects before application of **Lonza Disinfectant Wipes Plus**. **Lonza Disinfectant Wipes Plus** [this product] [wipe] [towelette] [cloth] [sheet] can be used for this purpose.

**Contact time:** Leave surface wet for 1 minute [60 seconds] for HIV-1. Use appropriate contact time as listed on label for all other viruses[,] [and] bacteria claimed.

**Disposal of infectious material:** Blood, body fluids, cleaning materials and clothing must be autoclaved and disposed of according to local regulations for infectious waste disposal.

*{Note to reviewer: If Avian Influenza A is listed on the label the following statement is required.}*

This product is for use on hard nonporous surfaces not conducive to treatment by immersion or excess liquid against Avian Influenza A.

*Note for reviewer: For labels that list medical premises and metal and / or stainless steel surfaces, one of the following statements must be used:}*

This product is not to be used as a terminal sterilant / high level disinfectant on any surface or instrument that [1] is introduced directly into the human body, either into or in contact with the bloodstream or normally sterile areas of the body, or [2] contacts intact mucous membranes but which does not ordinarily penetrate the blood barrier or otherwise enter normally sterile areas of the body. [This product may be used to preclean or decontaminate critical or semi-critical medical devices prior to sterilization or high level disinfection.]

*{or}*

This product is not for use on medical device surfaces.

**SANITIZING [DEODORIZING]:**

To sanitize [deodorize] hard, non-porous, non-food contact surfaces; wipe surface, using enough [wipes] [towelettes] [cloths] to allow treated surface to remain wet for 15 seconds [for] [*Staphylococcus aureus*] [Staph] [ATCC 6538], [*Klebsiella pneumoniae*] [Klebsiella] [ATCC 4352], [*Campylobacter jejuni*] [ATCC 29428], [*Escherichia coli*] [O157:H7] [*E. coli* O157:H7] and [*Listeria monocytogenes*]. Let surface dry. For visibly soiled surfaces, clean visible dirt [from the surface] first.

**DIRECTIONS FOR FLOOR WIPE USE:**

It is a violation of Federal Law to use this product in a manner inconsistent with its labeling.

**TO CLEAN AND DEODORIZE:** Wipe surface with wipe. Let air dry. Discard used wipe in trash. Do not flush [in toilet].

**TO CLEAN AND DISINFECT:** Pre-clean floor in normal manner. [Attach a premoistened wipe to the mop head using the [velcro] [fasteners] provided.] Thoroughly wet floor with wipes. [Change wipe when soiled.] or [Replace with a fresh wipe once visibly soiled or no longer thoroughly wetting the surface.] Allow surface to remain visibly wet for 4 minutes. Let air dry. On average, one wipe will clean [10] [x] square feet of floor. For a larger area you may need to use more than one wipe. Discard used wipe in trash. Do not flush. Do not use to disinfect dishes, glassware or utensils. Do not use as a diaper wipe or for personal cleansing. Contact manufacturer of wood floors prior to use.

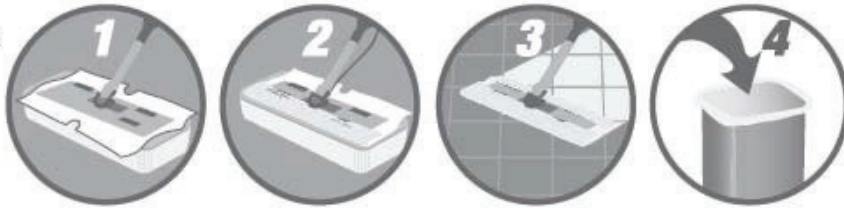
[Note: Not recommended for unpainted wood, natural marble or brass.]

[Do not use on unfinished, oiled or waxed wood, unsealed tiles or carpet.]

[Keep container flat and lid securely closed to keep cloths moist.]

*{Optional representative graphic}*

Use on  
mop  
head.



TO OPEN:

1. Cut off top of pouch with scissors.
2. Remove wipes from pouch.
3. Place wipes in plastic tub.
4. Discard empty pouch into trash.

TO USE WITH MOP:

1. Unfold top wipe in tub by pulling sides of the cloth over edges of tub.
2. Place sweeper on head.
3. Wrap wipe around head of sweeper.
4. Push edges of wipe into top of sweeper head.
5. Begin wiping. No rinsing required.
6. After use, remove soiled wipe and discard in trash. Do not flush.



*{Note to reviewer: Nonrefillable container}*

## **STORAGE AND DISPOSAL**

Store in original container in areas inaccessible to children. Keep securely closed. Nonrefillable container. Do not reuse or refill this container. Discard empty container in trash or recycle (if available).

*{Note to reviewer: Refillable container}*

## **STORAGE AND DISPOSAL**

Store in original container in areas inaccessible to children. Keep securely closed. Refillable container. [Reuse] [Refill] empty container only with **Lonza Disinfectant Wipes Plus** [refills]. Do not reuse this container except as described. If not refilling, discard empty container in trash or recycle (if available).

---

<sup>1</sup>Includes weight of absorbent wipe.

<sup>2</sup> For qualified claims insert some pathogens from page 15.

**Note to reviewer:** *If a supplemental label is using the “Germs” claim, per the EPA Guidance on use of the term “Germs” in order to make an unqualified “germ” claim the supplemental label must list all 3 of the major classes of organisms: Virus, Bacteria, Fungi and label must bear disinfectant directions. In order to make a qualified “germ” claim the supplemental label must be a broad spectrum disinfectant and list additional claims against one of the following two major classes of organisms: Fungi or Viruses and must bear disinfectant directions. The front panel of the label for a qualified claim must contain a designator (such as “”) that refers the user to the qualified statements that describes the type of germ the product is efficacious against. An unqualified claim can appear on front or back panel and does not require a designator.*

<sup>3</sup>Rinse toys with clean, potable water after disinfecting.

<sup>4</sup>On hard, non-porous, non-food surfaces

<sup>5</sup>When used according to the disinfection directions.

<sup>6</sup>When used according to the sanitization directions.

<sup>7</sup>Allow the surface to adjust to room temperature before disinfection.

<sup>8</sup>SARS-Related Coronavirus 2



{PACKET LABEL TO BE USED WITH MASTER CONTAINER LABEL}

## LONZA DISINFECTANT WIPES PLUS

EPA. Reg. No. 6836-336

EPA. Est. No. (insert EPA Est. No. here)

Net Contents:

Net Weight:

[optional - wipe dimensions:] X x X [inches] [in.]

Active Ingredients:

Octyl decyl dimethyl ammonium chloride.....	0.0909%
Dioctyl dimethyl ammonium chloride.....	0.0364%
Didecyl dimethyl ammonium chloride.....	0.0545%
Alkyl (C <sub>14</sub> , 50%; C <sub>12</sub> , 40%; C <sub>16</sub> , 10%) dimethyl benzyl ammonium chloride .....	0.1212%
Other Ingredients:.....	99.6970%
Total.....	100.0000% <sup>1</sup>

<sup>1</sup> Includes weight of absorbent wipe.

**KEEP OUT OF REACH OF CHILDREN**

**CAUTION [PRECAUCIÓN]**

See outer container for Precautionary Statements and Use directions

DISPOSAL: Dispose [wipe] [towelette] [Cloth] in trash after use. Discard empty [pouch] [packet] in trash.

Lonza, LLC

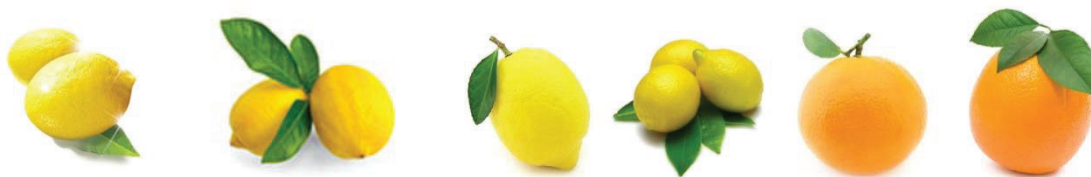
412 Mt. Kemble Ave., Suite 200S

Morristown, NJ 07960

{Note to reviewer: The following are optional graphics. Please refer to endnote 3 on page 21 regarding toys. Any final printed label containing an EPA-approved toy graphic will be required to include the text of endnote 3 about rinsing.}



{Note to reviewer: The following is an optional graphic that will be used to illustrate the scent.}



{Note to reviewer. Allowed on back or side panel only.}



[NSF Listed]  
(Insert 6-Digit NSF Listing Number here)



**THE FOLLOWING SECTIONS CONTAIN PROPRIETARY  
LANGUAGE AND GRAPHICS.**

**THESE SECTIONS ARE ONLY AVAILABLE FOR  
SUPPLEMENTAL REGISTRANTS APPROVED FOR ITS USE.**

*{Note to reviewer: The following are optional proprietary graphics.}*  
**{Section 1}**



*{Note to reviewer: The following are optional proprietary graphics.}*  
**{Section 2}**



{Note to reviewer: The following are optional proprietary graphics.}  
 {Section 3}

**Great Quality. Great Price. Guaranteed.**

Our guarantee is our promise that you'll be fully satisfied with the quality of every Great Value product. If for any reason you aren't happy, we'll replace it or return your money. Whichever you prefer. All you need is the package. It's that simple. Guaranteed.

Tell us what you think... 1-877-505-2267 or online at [walmart.com/greatvalue](http://walmart.com/greatvalue)

**Great Quality. Guaranteed.**

Return the package for replacement or money back. 1-877-505-2267 or visit us online at [walmart.com](http://walmart.com)



{Note to reviewer: The following is an optional, proprietary claim and graphic}

#### {Section 4}

{Note to reviewer: Below claim will only be used when Sanitizing directions are included on final label}

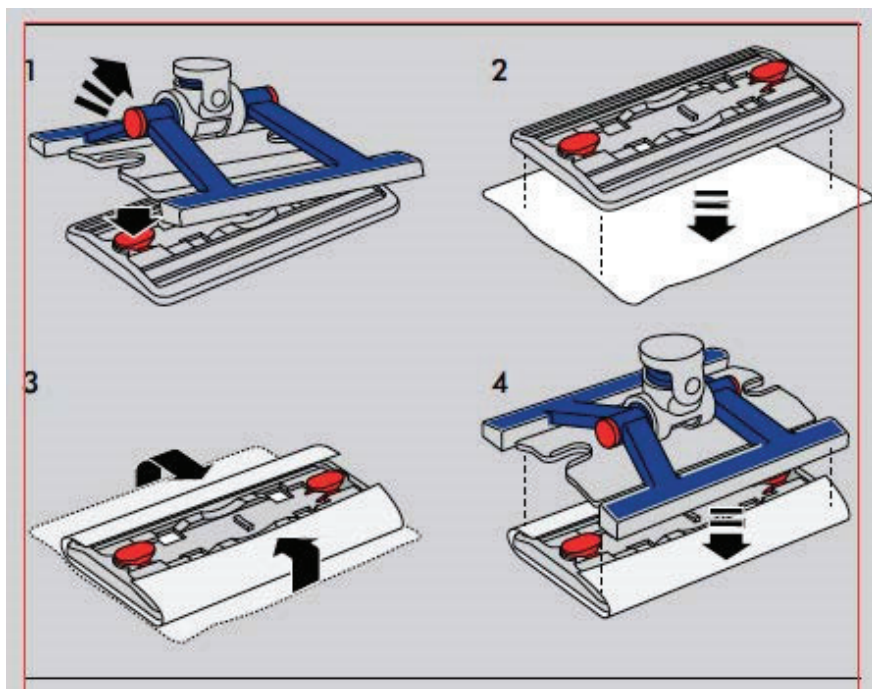
**Lonza Disinfectant Wipes Plus** [are] [99.9%] [effective against<sup>6</sup>] [Kills<sup>6</sup>] [Removes<sup>6</sup>] [Destroys<sup>6</sup>]:

[Bacteria]

*Salmonella enterica* [Salmonella] [ATCC 10708]

#### **SANITIZING [DEODORIZING]:**

To sanitize [deodorize] hard, non-porous, non-food contact surfaces; wipe surface, using enough [wipes] [towelettes] [cloths] to allow treated surface to remain wet for 15 seconds [for] [*Salmonella enterica*] [Salmonella] [ATCC 10708], [*Staphylococcus aureus*] [Staph] [ATCC 6538], [*Klebsiella pneumoniae*] [Klebsiella] [ATCC 4352], [*Campylobacter jejuni*] [ATCC 29428], [*Escherichia coli*] O157:H7 [*E. coli* O157:H7] and *Listeria monocytogenes*. Let surface dry. For visibly soiled surfaces, clean excess dirt first.



#### **Lonza Disinfectant Wipes Plus**

[Proven to] kill[s] coronavirus<sup>8</sup>

[Proven to] kill[s] the virus<sup>8</sup> that causes COVID-19

[Proven to] wipe out<sup>5</sup> 99.9% coronavirus<sup>8</sup>

Kills coronavirus<sup>8</sup> that causes COVID-19

Kills the coronavirus<sup>8</sup> that causes COVID-19

Kills the virus<sup>8</sup> that causes COVID-19

Wipes out<sup>5</sup> 99.9% of COVID-19 causing coronavirus<sup>8</sup>

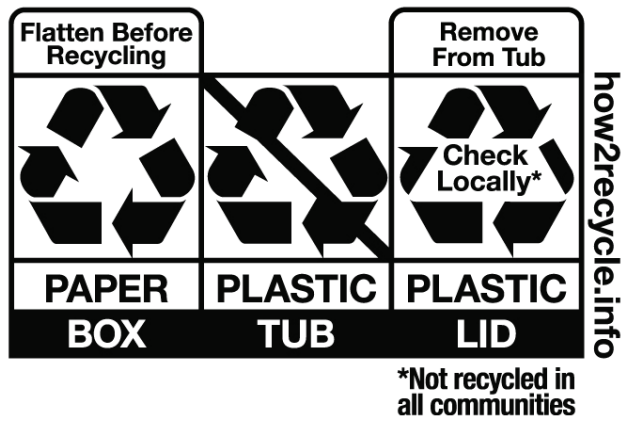
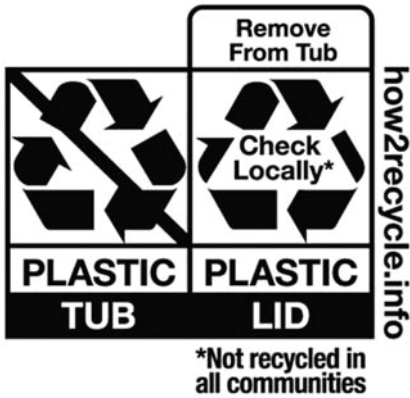
Wipes out<sup>5</sup> 99.9% of COVID-19 causing virus<sup>8</sup>

Wipes out<sup>5</sup> 99.9% of the coronavirus<sup>8</sup> that causes COVID-19

Wipes out<sup>5</sup> 99.9% of the virus<sup>8</sup> that causes COVID-19



{Note to reviewer: The following is an optional proprietary graphic}  
{Section 5}



{Note to reviewer: The following is an optional graphic that will be used to illustrate the scent.}





{Note to reviewer: The following are optional proprietary graphics.}  
{Section 6}



\*NOT RECYCLED  
IN ALL AREAS

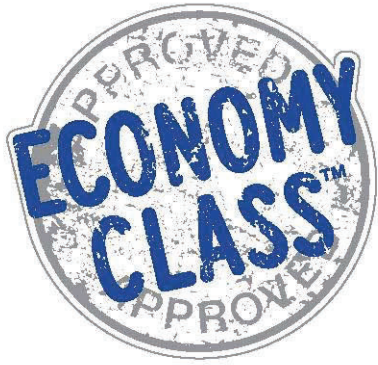


- ✓ item replaced
- ✓ money refunded

{Note to reviewer: The following are optional proprietary graphics.}  
{Section 7}



{Note to reviewer: The following are optional proprietary graphics.}  
{Section 8}



{Note to reviewer: The following are optional proprietary graphics.}  
{Section 9}

