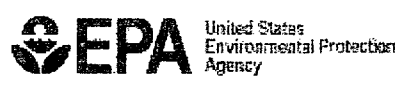


6836-336

7/28/2011

10/24

UNITED STATES ENVIRONMENTAL PROTECTION AGENCY
WASHINGTON, D.C. 20460



Office of Pesticide Programs

Joanna Holcombe,
Lonza Inc.
90 Boroline Rd.,
Allendale, NJ 07401

JUL 28 2011

Subject: Lonza Disinfectant Wipes **PIUS**
EPA Registration #: 6836-336
Application Dated: 3/4/2011
EPA Received Date: 3/7/2011
Submission #: 891540

Dear Ms. Holcombe,

The following amendment, submitted in connection with registration under the Federal Insecticide, Fungicide, and Rodenticide Act (FIFRA), section 3(C)(7)(A) is acceptable with the conditions below.

Proposed Amendment

- Add optional H1N1 claims.
- Submission of Toxicity Data
- Update CSF

Conditions

Revise the label as follows:

- 1) The test strain Influenza A (H1N1), ATCC VR-1469, Strain A/PR/8/34 only supports the claims provided in the EPA Guidance. The tested strain's origin is inconsistent with Pandemic 2009 H1N1 Influenza A Virus (formerly Swine Flu). Only the claims provided in the document, "Guidance for Testing and Labeling Claims against Pandemic 2009 H1N1 Influenza A Virus (Formerly called Swine Flu)" (<http://www.epa.gov/oppad001/h1n1-guide.html>) are acceptable on the label.
Note: The acceptability of the study was determined in April 2010.
- 2) For Multi-drug resistant claims, the antibiotics for which resistance has been demonstrated must be included on the Master Label.
- 3) The following revisions to the proposed label are required:
 - On the proposed label, the verbiage "quick" associated with disinfection and sanitization claims is not acceptable. The Agency has not defined a contact time consist with this term.
 - H1N1 claims must be consistent with Agency guidelines (<http://www.epa.gov/oppad001/h1n1-guide.html>).

CONCURRENCES

SYMBOL							
SURNAME							
DATE							

FINDINGS:

1. The primary eye irritation and the dermal irritation studies are **acceptable**.
2. The current acute toxicity profile for EPA Registration No. 6836-336 is:

Study	MRID Number	Toxicity Category	Status
Acute Oral Toxicity	42205001	IV	Acceptable
Acute Dermal Toxicity	48227501	IV	Acceptable
Acute Inhalation Toxicity	Waiver	IV	Waived
Primary Eye Irritation	48411401	III	Acceptable
Primary Skin Irritation	48411402	III	Acceptable
Dermal Sensitization	45206508	Nonsensitizer	Acceptable

Conclusions

The CSFs, dated 02/18/11, for the basic and alternate #s (1, 2 & 3) formulations are acceptable. The proposed technical minor formulation amendment meets the Agency Guidelines. The justification for the use of wider certified limits is acceptable.

Note: The policy on antimicrobial towelettes and wipes is under consideration by the Antimicrobial Division. Once the policy has been finalized, registrants will be informed if there are changes that need to be made regarding the registration process and if there are any additional data that must be submitted to the Division for review.

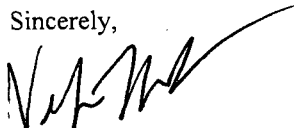
General Comments

Enclosed please find your chemistry, toxicology and efficacy data. A stamped copy of the accepted labeling with conditions is enclosed. Submit 1 copy of your final printed label before distributing or selling the product bearing the revised labeling.

Submit and/or cite all data required for registration/reregistration of your product under FIFRA section 3 (c) (5) and section 4 (a) when the Agency requires all registrants of similar products to submit such data.

If the above conditions are not complied with, the registration will be subject to cancellation in accordance with FIFRA section 6 (e). Your release for shipment of the product bearing the amended labeling constitutes acceptance of these conditions. Should you have any questions concerning this letter, please contact Velma Noble at (703) 308-6233 or Jamil Mixon at (703) 308-8032.

Sincerely,



Velma Noble
 Product Manager (31)
 Regulatory Management Branch I
 Antimicrobials Division (7510P)

SYMBOL	SURNAME	DATE	CONCURRENCES								

LONZA DISINFECTANT WIPES PLUS

One Step Cleaner / Disinfectant / Deodorizer / Sanitizer

FRESH / (SUMMER) CITRUS/ FLORAL/ MINT/ PINE / LEMON / WOODY/
LIME / MELON/ CLEAN / WATERFALL / (ULTIMATE) ORANGE / (SPARKLING) APPLE / INVIGORATING
BREEZE / SPRING GARDEN / LAVENDER (FRESH) / GRAPEFRUIT
FRAGRANCE / (ULTRA FRESH) SCENT / SCENTED

*Kills Flu Virus***

Active Ingredients:

Octyl decyl dimethyl ammonium chloride	0.0909%
Dioctyl dimethyl ammonium chloride	0.0364%
Didecyl dimethyl ammonium chloride	0.0545%
Alkyl (C ₁₄ , 50%; C ₁₂ , 40%; C ₁₆ , 10%) dimethyl benzyl ammonium chloride	0.1212%
Other Ingredients:	99.6970%
Total	100.0000% ¹

¹ Includes weight of absorbent wipe.

KEEP OUT OF REACH OF CHILDREN CAUTION

See (left) (side) (right) (back) panel for Precautionary Statements and First Aid

Manufactured by:
Lonza Inc.
90 Boroline Road
Allendale, NJ 07401

EPA Reg. No. 6836-336

EPA Est. No. (as indicated on container)

Net Contents: *insert # (premoistened) (towelettes) (wipes) (disinfecting) (antibacterial) (cleaning) (wet) (multi-purpose) (touch-up) (pre-moistened cloths) (sheets)*

Net Contents: (expressed as avoirdupois pounds and ounces)
(optional: wipe dimensions:) X x X [inches] [in.]

[Barcode]

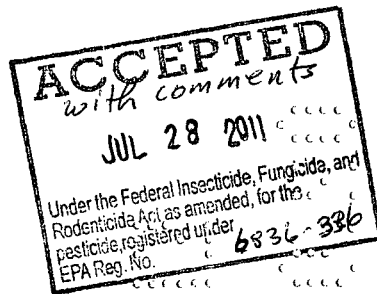
(Note to Reviewer: for multi-packs)

(2-pack)

((Bonus) Twin pack)

(3-pack)

**On hard non-porous surfaces



**PRECAUTIONARY STATEMENTS
HAZARDS TO HUMANS AND DOMESTIC ANIMALS**

Caution. Causes moderate eye irritation. Avoid contact with eyes or clothing. Wash thoroughly with soap and water after handling and before eating, drinking, chewing gum, using tobacco or using the toilet.

FIRST AID

If in eyes: Hold eye open and rinse slowly and gently with water for 15-20 minutes. Remove contact lenses, if present, after first 5 minutes, then continue rinsing eye.

Call a poison control center or doctor for treatment advice. Have the product container or label with you when calling poison control center or doctor or going for treatment.

(Optional Emergency contact information)

(For emergency information on (product, usage, etc.), call (1-XXX-XXX-XXXX), Monday through Friday, 9 a.m. to 5 p.m. After 5 p.m. call your poison control center at 1-800-222-1222.)

(Note to reviewer: Nonrefillable container)

STORAGE AND DISPOSAL

Store in original container in areas inaccessible to children. Keep securely closed. Nonrefillable container. Do not reuse or refill this container. Discard empty container in trash or recycle (if available).

(Note to reviewer: Refillable container)

STORAGE AND DISPOSAL

Store in original container in areas inaccessible to children. Keep securely closed. Refillable container. (Reuse) (Refill) empty container only with Lonza Disinfectant Wipes Plus (refills). Do not reuse this container except as described. If not refilling, discard empty container in trash or recycle (if available).

Questions?

Comments?

Call *(Insert phone number)*

(Note to reviewer: The following claims containing "New" may only be used for a period of six months after EPA's approval of a revised or alternate formula, beginning when the product is first sold or distributed.)

- 2 New Wipes
- Introducing
- Introducing new
- New
- New and Improved!
- New (Convenient) (Amazing) Package
- New easy to dispense
- New easy-glide dispensing top
- New Easy (Start Lid) (Start Package) (Grab Lid)
- New EZ (to start lid) (start package) (Grab Lid)
- New, faster acting (disinfecting) (antimicrobial) (cleaning) (wipes)!
- New larger (bigger)-sized wipe
- New Larger Size
- New (thick) (textured) wipe
- New Top
- New tougher wipe for tougher cleaning
- New tougher wipe for your tough(er) jobs
- New Wipes
- (New) (Now) (less-residue) (low-residue) (low-streak) formula

CLEANING CLAIMS:

- (25%) (30%) (50%) more grease cleaning power
- (A) Clean you can trust
- (All) (Multi-purpose) kitchen (everyday) (daily) (touch-up) (cleaning)
- Clean more with less
- Clean to a virtually streak-free shine
- Clean with just a wipe or a touch up
- Cleaning
- Cleaning just got a whole lot easier
- Cleans
- Cleans (grease) better than ever
- Cleans faster because the (scrubbies) (texture) removes (stubborn) (stuck on) (dirt) (messes)
- Cleans more than ever
- Cleans things you never thought a wipe could
- Cleans to a (Sparkle) (Shine)
- Cleans what you can't see
- Convenience of a wipe (a cloth)
- Convenient
- Cuts through (tough) (dirt) (stains) (grime) (soils) (dried on stains) (dried on soils)
- Cuts Through (Tough) (Messes) (Grease) (Grime)
- (Everyday) (Regular) (Cleaning) Wipes
- (Everyday) (Regular) Cleaning
- (Everyday) (Regular) Wiping
- Extra Power for your tough cleaning jobs
- Extra Power wipe for cleaning extra tough (jobs) (messes)
- Fast drying; leaves no dull or sticky residue
- Faster acting (wipe) formula
- For (light touch ups) (quick clean-ups) (in one easy step)
- For a Powerful Clean
- For everyday messes
- For the quick touch ups, try Lonza Disinfectant Wipes Plus
- For when a regular wipe (just) can't get the job done

CLEANING CLAIMS (Cont.):

- Gets up stuck-on messes (so you don't have to get on hands and knees)
- Greasy messes
- (Great) (Designed) (Built) (Tough) (Textured Design) for your Toughest Messes
- (Great) (Designed) (Built) for Tough (Messes) (Cleaning)
- (Great) for (Spring) (Home) (Kitchen) (Bathroom) (Dorm) (Office) (Cart) (Car) Cleaning
- (Great) for Cleaning Your (Home) (Kitchen) (Bathroom) (Room) (Dorm) (Office) (Cart) (Car)
- Great for Cleaning a Classroom
- Great for cleaning around the toilet
- Grimy messes
- Handles daily clean-ups with no need for additional sprays, sponges or buckets.
- Heavy (light) duty (jobs)
- Helps you finish (cleaning) fast (quickly)
- Leaves (no residue) (a streak free shine)
- Leaves your (house) (bathroom) (kitchen) fresh and clean
- Life doesn't stop for messes, (Wipe) (Clean) it up
- Life is Messy, (Wipe) (Clean) it up
- (Long lasting) (lasts a long time) (goes further) (last longer)
- Low-streak formula is great on (glass) (mirrors) (stainless steel) (stainless)
- Makes (your job) (cleaning) (easier) (easy)
- More scrubbing power
- No (mixing) (spraying) (mess) (and / or fuss) (no muss)
- No more need to get on your hands and knees to (scrub) (or clean) stubborn spots.
- No rinsing required
- No sprays, no sponges, no mess
- Now (2x) (3x) (4x) (5x) the (grease) cleaning power
- Now cleaning is (faster) (easier) than (ever) (before)
- Now cleans better on grease
- One step (clean) (cleaning)
- Our most powerful (grease) (deep) cleaning wipe ever
- Our most powerful cleaning formula ever
- Picks up more messes than other wipes
- Powerful cleaner for kitchen and bath
- Powers through (tough messes) (the dirt) (the grime)
- Powers through tough messes
- Powers through tough messes all over the house
- Quick easy clean-ups.
- Removes the grime to give you more time (alt: Removes the grime so you have more time)
- Scrub-N-Wipe(s)
- (Scrubs) (cleans) better than ever
- Scrubs like no other (wipe)
- Sticky messes
- Streakfree
- The convenient way to keep your home looking "just cleaned"
- The wipe to use when you don't have much time
- Touch Up
- Tough cleaning (made easy) (made easier) (at your fingertips)
- Tough Cleaning at your Fingertips!
- Tough cleaning without the tough cleaning smell
- Tough Enough to Clean a Classroom
- Tough enough to do the bigger cleaning jobs.
- Traps & locks away (dirt) (grease) (messes) (crumbs) (hair) (lint) (dust) (dirty greasy messes)
- Traps and locks away dirt

CLEANING CLAIMS (Cont.):

- Traps and locks grease and grime
- Use (daily) to clean bathroom soils such as soap, soap scum, toothpaste, hair spray, hair gel, cosmetics, shaving cream, hand or body lotion.
- Wipe down your seat. Bring [wet] [wipes] [or] [handi-wipes] to wipe down the [arm rests] [window areas] [seatbelt clasps] [and] [tray table] where you'll be sitting.
- Wipes are good for quick touchups
- Wipes Away (Tough) (Everyday) (Messes) (Grease) (Grime)
- Wipes Out (Tough) (Everyday) (Messes) (Grease) (Grime)
- Wipes Through (Tough) (Everyday) (Messes) (Grease) (Grime)
- Wipes to a (Clean) Shine (Sparkle)
- Wipes Up (Tough) (Everyday) (Messes) (Grease) (Grime)
- Worry free cleaning

FRESHNESS AND ODOR ELIMINATION CLAIMS:

- Deodorizes
- Don't just mask odors – (eliminate)(neutralize) them
- (Eliminates)(Neutralizes) odors (and freshens) on contact
- For a cleaner, fresher (home) (house), great for (all around) the (house) (home) (kitchen) (bath)
- For a long lasting scent experience
- Fresh, clean scent
- Leaves a (light) (clean) (fresh) scent
- Leaves a clean, fresh scent
- Light, clean scent
- Long lasting scent
- Powers through odor
- Tough on odor
- Wipes out odors
- (With a) (fresh) (clean) (citrus) (lemon) fragrance

Scent Names

(Note to reviewer: each block below also represents a graphic depicting the corresponding scent with the exception of citrus, apple, and berries, which will be submitted to the Agency for review.)

• (with) (fresh scent) [scent name] (fresh scent)
• [scent names]
• Meadows & Rain
• Lavender Vanilla & Comfort
• Vanilla Lavender & Comfort
• Citrus & Light
• Spring & Renewal
• Linen & Sky
• Rocky Springs & Cool
• Apple Spice & Delight
• Powder & Elegance
• Blossoms & Breeze
• Summer & Splash
• Berries & Paradise

CLEANING AND ODOR ELIMINATION CLAIMS:

- A fresh take on tough cleaning
- An effective way to clean and deodorize against odor-causing bacteria.
- Eliminate dirt and (neutralize) odor
- Freshens (as you clean)
- Power(s) through (tough) (messes) (dirt) (and grease) and (help(s)) (eliminate(s))(neutralize(s)) odors

ANTIBACTERIAL CLAIMS:

- 3 (steps) in 1- wipes, scrubs and disinfects (sanitizes) (so you finish faster)
- 99.9% effective against (Staph)(Klebsiella)(Campylobacter) in (just) 15 seconds(!)
- 99.9% effective against bacteria in (just) 15 seconds(!)
- All around the house (disinfecting) (cleaning formula)
- Antibacterial
- Antibacterial Formula
- (Antimicrobial) (antibacterial) (disinfecting) (sanitizing)
- Bacteria that grows in the shower/bathroom
- Clean and (Disinfect) (Sanitize) from Classroom to Playground (and everything in between)
- (Clean and) (disinfect) (sanitize) in just (4) (four) minutes
- (Clean and) (disinfect) (sanitize) (commonly touched) (household) surfaces in (just) minutes(!)
- Cleans and (disinfects) (sanitizes) (without scratching) (surfaces)
- Cleans and (disinfects) (sanitizes) in one (easy) step
- Cuts (tough) grease, kills bacteria
- Daily (Surface) (Disinfectant) (Sanitizer) (Cleaner)
- (Designed) (Built) for (disinfecting) (sanitizing) and (cleaning) (wiping) everyday messes
- (Designed) (Built) for Everyday (Disinfecting) (Sanitizing) (Cleaning) (Wiping) (Messes)
- (Disinfect) (Sanitize) (Surfaces) (Your House) (Your Kitchen) (Your Bathroom) (Daily) (Everyday)
- (Disinfect) (Sanitize) (Your Desk) (Your Office) (Your Room) (Daily) (Everyday)
- (Disinfecting) (Sanitizing) Formula
- (Disinfecting) (Sanitizing) Wipes
- (Disinfects) (Sanitizes)
- (Disinfects) (Sanitizes) (as it cleans) (and scrubs in one easy step) (without (a) (the) (that) disinfectant smell)
- (Disinfects) (Sanitizes) while cleaning (up) stubborn messes
- Dual action-cleans up stubborn messes while it (disinfects) (sanitizes)
- Effective in sanitizing (your)(household)(kitchen)(bathroom)(surfaces)
- Effective in the presence of 5% serum contamination
- Effectively (disinfects) (sanitizes) common household surfaces
- Eliminate bacteria in (just) 4 minutes(!)
- Eliminates (Pseudomonas) (MRSA) (CA-MRSA) (E.coli) (Campylobacter) (VRE) (Salmonella) in (just) 4 minutes(!)
- Everyday (Surface) (Disinfectant) (Sanitizer) (Cleaner)
- (Finally) a wipe that cleans and (disinfects) (sanitizes)
- Great for Everyday (Disinfecting) (Sanitizing) (Cleaning) (Wiping) (Messes)
- Kills 99.9% of bacteria in (just) 15 seconds(!)
- Kills 99.9% of Germs² (Bacteria) (Viruses) (Bacteria and Viruses)
- Kills 99.9% of (Staph)(Klebsiella)(Campylobacter) in (just) 15 seconds(!)
- Kills bacteria (while it cleans)
- Kills Bathroom shower mold
- Kills Cold & Flu Virus
- Kills common household bacteria
- Kills common (household)(kitchen)(bathroom) bacteria
- (Kills) (Eliminates) (Destroys) germs² (in) (just) (4) minutes)
- (Kills) (Eliminates) (Removes) (Destroys) [Insert pathogen or pathogens other than avian influenza A from lists on page 14] (on (pre-cleaned) environmental surfaces)
- (Kills) (Eliminates) (Removes) (Destroys) 99.9% of bacteria

ANTIBACTERIAL CLAIMS (Cont.):

- (Kills) (Eliminates) (Removes) (Destroys) 99.9% of bacteria, leaves (leaving) surfaces (clean and) disinfected
- (Kills) (Eliminates) (Removes) (Destroys) Avian Influenza A H3N2 (and) H5N1 on pre-cleaned environmental surfaces
- (Kills) (Fights) Germs² (Influenza Type A/Brazil, the Flu Virus) (Bacteria) (Bacteria and Viruses) (Viruses)
- (Kills) (Fights) Wipe Out (Germs²) (Influenza Type A/Brazil, the Flu Virus) (Bacteria) (Viruses)
- Kills germs²
- Kills Mold & Mildew
- Kills Salmonella, MRSA & Flu Virus!
- Kills the Flu Virus* On Hard Nonporous Surfaces
- Kills (Wipes Out) (99.9%) (of) (Listeria) (MRSA) (Methicillin-Resistant Staphylococcus Aureus) (Norwalk)
- Leaves surfaces clean and disinfected
- (Quick) (easy) way to (clean and) disinfect (in one step)
- Reduce (risk of cross contamination) (on hard non-porous surfaces)
- Remove (99.9% of) (Bacteria) (Germs²) (from Your) (Surfaces) (Home) (Kitchen) (Bathroom) (Office)
- Sanitize (commonly touched) (household) surfaces in (just) seconds(!)
- (Sanitize)(Disinfect) (airplane)(airliner) (tray(s)) (tray table(s))
- (Sanitize)(Disinfect) any room in the house
- (Sanitize)(Disinfect) (baby)(children's) toys
- (Sanitize)(Disinfect) (bathroom)(kitchen) (sink(s)) (faucet(s)) (toilet(s)) (flush handle)(seat) (light switch) (door)(handle)(knob)
- (Sanitize)(Disinfect) (camping)(hiking)(boating) equipment
- (Sanitize)(Disinfect) (cell)(mobile)(phones)
- (Sanitize)(Disinfect) (computers(s))(keyboards) (touchpads) (mouse)
- (Sanitize)(Disinfect) (daycare)(childcare) (facilities)
- (Sanitize)(Disinfect) (desk tops) (work tables) (work areas) (school desks) (shared equipment)
- (Sanitize)(Disinfect) (hotel)(motel)(public)(shared) (TV)(television(s)) (remote control(s))(remote(s)) (telephone(s))(phone(s)) (computer(s))(keyboard(s)) (fax machine(s))
- (Sanitize)(Disinfect) (shopping)(grocery) cart(s) (handle(s))
- (Sanitize)(Disinfect) the hard, non-porous surfaces of (cabinets), (chairs), (counter(s)top(s)), (shower)(door(s))(stalls), (bathtub(s)), (sink(s)), (vanities), (vanity)(top(s)), (bathroom)(fixture(s))(faucet(s))
- (Sanitize)(Disinfect) the hard, non-porous surfaces of (personal protective equipment)(PPE)(respirators)(full face breathing apparatus)(gas masks)(goggles)(face shields)(hearing protection)(ear covers)(safety ear muffs)(helmets)(protective head gear)(hard hats)
- (Sanitize)(Disinfect) the hard, non-porous surfaces of (sports)(sporting)(gym)(athletic)(workout) (equipment)(machines)
- (Sanitize)(Disinfect) the hard, non-porous surfaces of (wrestling)(gymnastic)(gym)(athletic)(yoga)(tumbling) (mats)(pads)
- (Sanitize)(Disinfect) the (interior)(exterior) of (common) (household)(kitchen) appliances
- (Sanitize)(Disinfect) (waiting rooms) (public areas)
- (Sanitize)(Disinfect) (your)(common) (household) (surfaces)(items)(:)(such as) (high chairs) (booster seats) (strollers) (car seats) (cribs) (tables) (tabletops) (counters) (countertops) (appliances) (sinks) (glazed tiles) (light switches) (door handles) (railings) (telephones) (trash)(garbage)(can(s))(receptacle(s))(bin(s))
- Sanitizing Wipes
- The convenient way to (disinfect) (sanitize) your household surfaces
- The smart (way to) clean (and disinfect) (and sanitize)
- The wipe that (disinfects) (sanitizes) while it cleans (up) (stubborn) (stuck-on) messes)
- (This product or product name) is an effective sanitizer against (Staph)(Klebsiella)(Campylobacter).
- Two in one action (cleans and) (disinfects) (sanitizes) in one easy step)
- Wipe Away (Germs²) (Influenza Type A/Brazil, the Flu Virus) (Bacteria) (Viruses*)

ANTIBACTERIAL CLAIMS (Cont.):

- Wipe out germs² (in just minutes)
- Wipe Up (Germs²) (Influenza Type A/Brazil, the Flu Virus) (Bacteria) (Viruses*)
- (With proven) Antibacterial Action
- Worry free (disinfecting) (sanitizing) (cleaning)

² **Note to reviewer:** *If a supplemental label is using the "Germs" claim, per the EPA Guidance on use of the term "Germs" in order to make an unqualified "germ" claim the supplemental label must list all 3 of the major classes of organisms: Virus, Bacteria, Fungi and label must bear disinfectant directions. In order to make a qualified "germ" claim the supplemental label must be a broad spectrum disinfectant and list additional claims against one of the following two major classes of organisms: Fungi or Viruses and must bear disinfectant directions. The front panel of the label for a qualified claim must contain a designator (such as **) that refers the user to the qualified statements that describes the type of germ the product is efficacious against. An unqualified claim can appear on front or back panel and does not require a designator.*

H1N1 CLAIMS:

- (Effective against)(Kills)(Disinfects) the H1N1 strain of Influenza A on hard, nonporous surfaces(!)
- (EFFECTIVE AGAINST) (KILLS) (THE) (PANDEMIC) (2009) (H1N1) (SWINE) FLU VIRUS
- Influenza Type A (virus) (H1N1)/(formerly called swine flu)
- (Kills) (Eliminates) (Destroys) (the) (Pandemic 2009) H1N1 (Influenza) virus on hard non-porous surfaces
- Kills Pandemic 2009 H1N1 influenza A virus.
- Kills Pandemic 2009 H1N1 influenza A virus (formerly called swine flu).
- Respiratory illnesses attributable to Pandemic 2009 H1N1 are caused by influenza A virus. This product (Product Name) is a broad-spectrum hard surface disinfectant that has been shown to be effective against (influenza A virus tested and listed on the label) and is expected to inactivate all influenza A viruses including Pandemic 2009 H1N1 (formerly called swine flu).
- This product has demonstrated effectiveness against influenza A virus and is expected to inactivate all influenza A viruses including Pandemic 2009 H1N1 influenza A virus.
- This product has demonstrated effectiveness against (influenza A virus tested and listed on the label) and is expected to inactivate all influenza A viruses including Pandemic 2009 H1N1 (formerly called swine flu).

USAGE CLAIMS:

- For Homes, Institutional and Industrial Use
- For household surfaces (all around the house) indoor and outdoor
- For use (at home), (away from home), (in public places) (on the go)
- Multi-purpose
- Multi-surface
- (Send) (Bring) (Wipes) (Me) to School
- Specially formulated for use in the (kitchen) (bathroom)

VALUE CLAIMS:

- (2) (Two) (1) (One) For You (1) (One) For School
- (Assorted) (Mixed) (Special) (Variety) (Multiple) (Multi) (Bundle) (Pack)
- Back to School (Variety) (Special) (Bundle) (Pack)
- Bonus Size
- Convenient (size)
- Get it done with one
- Guaranteed (to clean longer) (you'll use fewer wipes to clean more)
- Large Size, Small Size, Bonus Pack
- More cleaning in one wipe
- More cleaning power per wipe
- One wipe goes a long way
- One wipe will get it done
- (Special) School (Variety) (Bundle) (Pack)
- Spring Cleaning (Special) (Value) (Bonus) Pack)
- Travel (Size) (pack)

VALUE CLAIMS (Cont.):

- (2) (Two) Free Cloths
- Value Size
- Variety Pack
- XX% More (Free) Wipes, Bonus Size, (Bonus) (Free) (27-ct) (35-ct) (XX-ct) Wipes, XX for the Price of YY.

SURFACE SAFETY CLAIMS:

- Non-abrasive
- Non-scratch(ing)
- Not recommended for use on computer or television monitor screens.
- These (wipes) (towelettes) (cloths) will not harm (most) surfaces.
- Will not scratch

SUBSTRATE CLAIMS:

- 100% Cotton Wipe fabric
- 2 sided wipe
- 2 Sides
- 30% Thicker and Quilted Texture (for Tough) (Messes) (Cleaning)
- (30%) thicker wipes
- Biodegradable wipe fabric
- (Cloth-like texture) (Textured) for scrubbing power
- Cloth-like (textured) (strong)
- Cloths (Wipes) quickly remove dirt, spots and smudges
- Dual (action) (purpose) (scrubs) wipes
- Grooved for (Grime) (Tough Messes) (Grease)
- Improved scrubbing texture
- (Our) toughest wipe ever
- Premoistened
- (Premoistened) (wet) disinfecting (textured) (antibacterial) (wipes) (towelettes) (cloths)
- (Quilted Texture) (Textured) to (Scrub) (Power) (Fight) Through Tough Messes
- (Special) (Unique) 3-D Texture for Tough Messes
- (Strong) (Thick) wipe
- Strong wipe for Heavy Duty cleaning
- Strong wipe for tougher (jobs) (messes)
- Stronger Wipe
- [Substrate] [Wipe] [Towelette] [Cloth] composed of 100% [x%] recycled materials
- [Substrate] [Wipe] [Towelette] [Cloth] composed of 100% [x%] renewable materials
- [Substrate] [Wipe] [Towelette] [Cloth] [material] derived 100% from [wood pulp] [cotton] [cellulose] [recycled cellulose]
- (Textured cloth) gets up stubborn stuck on messes
- Textured (cloths) (towelettes) clean floors faster (and easier)
- Textured (Wipe) (cloth) (towelette) (for tough jobs) (for tough cleaning)
- Textured for better (cleaning) (scrubbing) power
- Textured to Pick Up Particles
- The wipe that is (strong) (durable) (thick) (heavy) enough to scrub (and) (clean)
- Thick (wipe), cloth-like texture
- Thicker
- Thicker than an ordinary wipe
- Thicker wipe (cushionyTHICK™)
- Thicker, cloth-like feel for tough messes
- Tough like a towel
- Tough (Textured) Wipes
- (Tough) (Thick) wipe(s) for tough (cleaning) (messes)
- Tough(er) wipe for tough(er) cleaning (jobs)

SUBSTRATE CLAIMS (Cont.):

- (Unique) (Special) (Thick) (Quilted) Texture for Tough (Messes) (Cleaning)
- Wipe fabric made from 100% renewable resources
- With (Magic Lock) (Magic Scrub) (Trap n' Lock) (Magic Quilt) fiber(s)
- With a cloth-like 3D texture
- With extra cleaning power (wipes) (sheets) (cloths)
- With (extra) scrubbing power
- With extra strength (wipes) (sheets) (cloths)

PACKAGING CLAIMS:

- Better (package) (dispensing)
- Breakthrough package
- (Convenient) (Hassle-free) (One-hand) dispensing
- Converted with 100% [x%] wind energy
- Dispenses better
- Dispenses Like A Tissue (Tough Like A Cloth (Towel))
- Dispenses like a tissue, cleans like a cloth
- Easier dispensing
- Easy (dispensing) (Glide Lid)
- Easy dispense (lid) (package)
- Easy dispensing (and) (tough texture) (for the ultimate wipes experience)
- (Easy) (EZ) start
- Easy to (open) (thread) (access lid) (dispense)
- Easy to use
- Easy-glide dispensing top
- [Eco-shape Canister]
- Energy Efficient Canister
- Fewer rips, bunches, and snags
- (Just like a tissue box) (Tissue box dispensing)
- Just (pull) (pop) wipe and toss.
- [Less Oil Consumption], [Landfill Waste], [Production Energy], [and] [Freight Energy]
- [Made with] X% less plastic
- [Made with] X% less plastic [than similar size containers][than previous(ly) used container(s)]
- No (more) (pinched fingers) (rips) (tears)
- One at a time (dispensing, like a tissue box)
- One wipe at a time dispensing
- Only use approved refill packs.
- Package breakthrough
- Package is 100% recyclable
- Package contains xx% recycled materials
- Package contains xx% post consumer waste
- Packaged with 100% [x%] wind energy
- Packaging contains XX% (post-consumer waste) (recycled materials)
- Pop up
- Pop and go
- Pop and Clean
- Portable
- Produced with Wind Energy
- Recyclable packaging
- Refill (size) (pack) (*Refill for Lonza Disinfectant Wipes Plus container*) (*tub*)
- (Regular) (and) (Everyday) Wipe Pack
- Specially designed package that easily dispenses one at a time
- The product was manufactured with 100% Wind Energy
- [This product was] [Produced] [Manufactured] with [100%] [x%] wind energy

FLOOR MOP CLAIMS:

- Fits (insert name of mop)
- Fits Lysol® Quick Clean & Swiffer® Tools.
- Fits Swiffer®
- Fits Swiffer® Mop-Head
- Fits Swiffer® or Pledge Grab-It® Mop Heads
- For Mopping

LYSOL® is a registered trademark of Reckitt Benckiser Inc.

SWIFFER® is a registered trademark of the Proctor & Gamble Company

PLEDGE GRAB-IT® is a registered trademark of S.C. Johnson & Son Inc.,

OTHER CLAIMS:

- (After use), just toss wipe away (in trash)(in garbage).
- Ammonia Free (formula)
- Bleach Free (formula)
- Cleaning Advice? Visit www.mrclean.com
- Contains No Phosphate
- Does not contain (chlorine) bleach or ammonia.
- Fragrance-free
- No harsh scent
- Patent pending
- Phosphate free
- Quality Guaranteed
- If you are not completely satisfied with this product, return it for a refund or replacement.
- Ready to Use
- Save time with (this product or product name)(!)
- Saves steps
- Saves Time
- This product contains no (phosphates or) phosphorous (compounds).
- Do not use as a diaper wipe or for personal cleansing.
- Do not use for personal cleansing.

Lonza Disinfectant Wipes Plus:

- deliver non-acid disinfectant and cleaning performance
- (are a heavy duty disinfectant cleaner that) cleans, disinfects and deodorizes in one labor saving step.
- deodorizes by killing microorganisms (bacteria) that cause offensive odors.
- (improves labor results by) effectively controls (controlling) malodors.
- will disinfect, clean and deodorize surfaces in rest rooms and toilet areas, behind and under sinks and counters, garbage cans and garbage storage areas, and other places where bacterial growth can cause malodors.
- is formulated for use in daily maintenance programs with a balance of detergents, biocides and malodor counteractants that deliver effective cleaning, disinfecting and malodor control.
- is a complete, chemically balanced disinfectant
- will not leave grit or soap scum.
- is a (one-step) disinfectant cleaner that is effective against a broad spectrum of bacteria when used as directed.
- is a proven "one-step" disinfectant - cleaner which is effective in the presence of 5% serum contamination.
- (Kills) (eliminates) (kitchen) (bathroom) (household) bacteria.
- (Kills) (eliminates) common household bacteria.
- Starts killing (bacteria) on contact
- Kills (eliminates) bacteria
- help you accomplish things you never thought a wipe could do
- (wipes) (cloths) (sheets) help you to accomplish things you never thought a wipe could do
- (help) take the hassle out of dispensing disinfecting wipes. The Easy-Glide Lid dispenses wipes one-at-a-time, like a tissue-box, so you get the number of wipes you want with no pinched fingers, (torn wipes), (or) (jammed lids). Plus they kill bacteria to keep your (family's) home (clean). Use it on bathroom and kitchen surfaces like countertops, appliances, door handles, light switches, toilets, sinks, and tubs.
- are designed for your toughest tasks. They are (thick and strong) (thicker and stronger) to stand up to (tough) (your toughest) messes, and they have a cloth-like texture for extra scrubbing power. Plus they kill bacteria to (help) keep your (family's) (home) (clean). Try it (them) on (your) tough (toughest) messes in the kitchen and bathroom, like baked-on grease on your stove (top), sticky messes on your counters, and built-up grime on your bathroom sinks.

Cross-contamination is of major (housekeeping) concern. **Lonza Disinfectant Wipes Plus** have been formulated to aid in the reduction of cross-contamination in the home, schools, institutions and industry.

Use Lonza Disinfectant Wipes Plus:

- in federally inspected Meat & Poultry Plants as a disinfectant on all surfaces in inedible product processing areas, non-processing areas and / or exterior areas..
- as a disinfectant on hard, nonporous surfaces.
- in kitchens, bathrooms and other household areas.
- to clean and disinfect finished floors, sinks and tubs.
- for non-scratch cleaning of showers and tubs, shower doors and curtains, fixtures and exterior toilet bowl surfaces.
- to clean and disinfect non-porous personal (safety) (protection) equipment, protective headgear, hard hats, half mask respirators, full face breathing apparatus, gas masks, goggles, spectacles, face shields, silicone rubber or PVC hearing protectors and vinyl covered ear muffs. Rinse all equipment that comes in contact with skin before reuse with clean warm water (about 120°F), and allow to air dry. (Precaution: Cleaning at 120°F temperature will avoid overheating and distortion of the personal (safety) (protection) equipment that would necessitate replacement.
- to clean and disinfect hard non-porous surfaces of gym equipment, exercise machines, wrestling mats and gymnastic equipment.

Lonza Disinfectant Wipes Plus are a one-step disinfectant and Bactericidal according to the current AOAC Use-Dilution Test Method modified in the presence of 5% organic serum against:

or

Lonza Disinfectant Wipes Plus are effective against (Kills) (Eliminates) (Removes) (Destroys):

[Bacteria]

- Staphylococcus aureus [Staph]
- Salmonella enterica [Salmonella]
- Pseudomonas aeruginosa [Pseudomonas]
- Campylobacter jejuni [Campylobacter]

- Acinetobacter baumannii
- Brevibacterium ammoniagenes [Brevibacterium]
- Community Associated Methicillin-Resistant Staphylococcus aureus - [CA-MRSA] (NRS384) (USA300)
- Community Associated Methicillin-Resistant Staphylococcus aureus - [CA-MRSA] (NRS123) (USA400)
- Enterobacter aerogenes
- Enterococcus faecalis [Enterococcus]
- Enterococcus faecalis- Vancomycin Resistant [VRE]
- Escherichia coli [E. coli]
- Escherichia coli O157:H7
- ESBL Escherichia coli – [Extended spectrum beta-lactamase producing E. coli]
- Klebsiella pneumoniae [Klebsiella]
- Legionella pneumophila
- Listeria monocytogenes
- Pseudomonas cepacia [Pseudomonas]
- Salmonella schottmuelleri [Salmonella]
- Salmonella typhi [Salmonella]
- Serratia marcescens [Serratia]
- Shigella dysenteriae [Shigella]
- Staphylococcus aureus - Methicillin-Resistant [MRSA]
- Staphylococcus aureus - Multi-Drug Resistant
- Staphylococcus aureus-Vancomycin Intermediate Resistant – [VISA]
- Streptococcus pyogenes [Strep] [a cause of scarlet fever]
- Vibrio cholerae

[Viruses:]

- *Herpes Simplex Virus Type 1
- *Herpes Simplex Virus Type 2
- *HIV-1 [AIDS Virus]
- *Human Coronavirus
- *Influenza Type A Virus / Brazil [Influenza] [(the) Flu (Virus)]
- *Influenza A Virus H1N1
- *Respiratory Syncytial Virus [RSV]
- *SARS Associated Coronavirus [SARS] [cause of Severe Acute Respiratory Syndrome]
- *Vaccinia Virus [Pox Virus]

[Animal Viruses:]

- Avian Influenza Virus H3N2
- Avian Influenza Virus H5N1
- Avian Infectious Bronchitis Virus
- Canine Distemper Virus
- Newcastle's Disease Virus
- Pseudorabies Virus

(Note to reviewer: each block below also represents a graphic depicting the corresponding area of use. The graphics will only represent individual objects or outsides or insides of buildings as described below. No people or food will be depicted in graphics.)

(AREAS OF USE:)

Use Lonza Disinfectant Wipes Plus in:

Bathrooms	Hotels
Children's room	Institutional facilities
Homes (households)	Institutions
Kitchens	Laundry rooms
Living room	Locker rooms
	Motels
Dental offices	Playrooms
Hospitals	Prisons
Medical Offices	Public facilities
Nursing homes	Public rest rooms
	Salons
Day care centers	Schools
Nurseries	Shower and bath areas
	Sick rooms
Bars	
Cafeterias	Camp grounds
Convenience stores	Play ground equipment
Food processing plants	
Food storage areas	Airplanes
Institutional kitchens	Airports
Restaurants	Ambulances
USDA inspected food processing facilities	Boats
	Buses
Athletic facilities	Campers
Barber shops	Cars
Business and office buildings	
Colleges	Emergency (Police) (EMS) (Fire) (Rescue) vehicles
Correctional facilities	Mobile homes
Dressing rooms	Ships
Exercise facilities	Taxis
Factories	Trailers
Family Rooms (Dens)	Trains
Health clubs	Transportation terminals

Non Food Contact Sanitizing Use Areas: Homes, Schools, transportations, airplanes, trains, automobiles, office buildings, daieres, meat processing plants, food processing areas, food handling areas, bars, restaurants, healthclubs, gyms, grocery stores, weight rooms, exercise rooms.

(Note to reviewer: each block below also represents a graphic depicting the corresponding type of surface. No people or food will be depicted in graphics. Only exteriors of microwaves and refrigerators will be depicted. Toy graphics will be submitted to Agency for review.)

(TYPES OF SURFACES:)

Use **Lonza Disinfectant Wipes Plus** on washable hard, nonporous surfaces of:

Appliances	Shower stalls
Bathroom fixtures	Sinks (bathroom, kitchen)
Bathtubs [Fiberglass]	Storage areas
Cabinets	Stoves (stovetops)
Cages	Tables, (picnic tables)
Car seat	Telephones
Chairs	Exterior Toilet bowl surfaces
Computer keyboards	Toilet seats
Counters (countertops)	Toys ³
Cupboards	Tubs
Desks	Tiles, glazed
Diaper changing (tables)(counters)	Walls
Diaper pails	Tanning Beds
Doorknobs	Non-critical medical device surfaces:
Equipment tables	Beds [Medical] [Hospital]
Faucets	Bed frames
Faucet Handles	Bed rails
Floors	Crutches
Finished floors	Defibrillators
Garbage cans	Gurneys
Glass	
Highchairs	Non-critical [hospital] [medical] equipment surfaces
Lab benches	[Medical] Examining tables
Linoleum	[Medical] [Hospital] Lamps
Light switches	Rescue tools
Laminate flooring	Resuscitators
Microwave ovens - exteriors	[Medical] [Hospital] Scales
Non-Wooden Outdoor (patio) furniture except cushions and wood frames	Stands
	Stretchers
Refrigerators - exteriors	Stethoscopes
Refrigerated storage and display equipment	Walkers
Sealed floors	Wheel chairs
Showers	Ultra-sound transducers and equipment
Shopping cart handles	

³Rinse toys with clean, potable water after disinfecting.

(TYPES OF SURFACES:)

Use **Lonza Disinfectant Wipes Plus** on washable hard, nonporous surfaces of:

Other hard nonporous surfaces made of:
Acrylic
Finished woodwork
Formica®
Glass
Glazed ceramic
Glazed enameled surfaces
Glazed porcelain
Metal
Plastic (such as polystyrene or polypropylene)
Sealed granite
Sealed marble
Sealed quartz
Sealed stone
Stainless steel
Upholstery- vinyl and plastic

Formica® is a registered trademark of the Formica Corporation

Note: Do not use on unpainted wood, natural marble or brass.

(For canister)

To Open Package:

Remove cover. Pull up (towelette) (wipe) (cloth) corner from center of roll. Thread through hole in the cover. Replace cover. Open center cap on cover to remove wipe. When not in use (When not using), close center cap (securely) to prevent moisture loss.

or (For carton or tub)

To Open Package: Open cover and slowly peel back label on pouch. Remove (Pull out) (wipe) (towelette) (cloth) as needed. To retain moisture, reseal (pouch) (bag) by firmly pressing seal back on the (pouch) (bag) and close (carton or tub) cover.

or (For refill, pouch or bag:)

To Open Package:

(Slowly) peel back the label (open seal). Remove (Pull out) (wipe) (towelette) (cloth) as needed. To retain moisture, reseal (pouch) (bag) by firmly pressing seal back on the (pouch) (bag)

or (for the Travel Pack size):

To Open Package: Slowly peel back label. (Pull out) (Remove) (wipes) (towelettes) (cloths) as needed. Reseal label to retain moisture.

or **To Open Package:** Open ziplock (Tear edge of pack). (Pull out) (Remove) (wipes) (towelettes) (cloths) as needed. Reseal ziplock to retain moisture.

or (for the single cloth or sample pack):

To Open Package: Tear (pouch) open (at top edge of pouch) (at tear notch) (along dotted line) (where indicated) (edge of pack). (Pull out) (Remove) (Wipe) (Towelette) (Cloth).

(For product supplied in a single use pouch with a folded towellete, include the following:)

Unfold (Wipe) (Towelette) (Cloth)

or

To Open Package: (Remove package seal(s)) (Remove safety seal(s)) (Flip) Open lid. To remove first wipe (sheet) (wet cloth) cloth pull up on wipe and remove wipe through (dispensing) opening (wavy dispensing opening) (orifice). (The next wipe will pop up automatically). (Always) close (snap) lid securely between uses (to retain moisture).

or

To Open Package: (Remove package seal(s)) (Remove safety seal(s)). Open (Flip open lid (package)). To start (remove) (first) wipe (sheet) (wet cloth) take the edge of wipe from large opening to the small dispensing opening and pull up. (The next wipe (sheet) (wet cloth) (cloth) will pop up automatically.) (Always) close (snap) lid securely between uses (to retain moisture).

or

To Open Package: Open Lid. To start wipes, pull up on wipe and move wipe into the small dispensing opening (orifice) (aperture) (hole) (wave) and (pull sheet up to remove wipe) remove wipe. (The next wipe (sheet) (wet cloth) will pop up automatically). (Always) close (snap) lid securely between uses (to retain moisture).

or

To Open Package: Flip open(up) the lid(cover)(top)(cap)(dispensing lid). Thread the wipe (first wipe)(cloth)(first cloth)(sheet) through the dispensing lid and pull up to remove wipe from package. The next wipe (sheet)(cloth) pops up automatically. Close lid securely between uses to retain moisture(prevent moisture loss).

or
To Open Package: Press the three (3) ridges with your thumb and push up on the cap(top)(lid) to open(lid). To remove wipe (sheet) (wet cloth) (cloth) (towelette) pull up on wipe and remove wipe through (dispensing) opening (wavy dispensing opening) (orifice). (The next wipe will pop up automatically).

or
To Open Package: Press the three (3) ridges with your thumb and push up on the cap(top)(lid) to open(lid). Thread the wipe (sheet) (wet cloth) (cloth) (towelette) through the dispensing lid and pull up to remove wipe from package. The next wipe will pop(pull) up automatically. (Always) Close (snap) lid securely between uses (to retain moisture).

or
To Open Package: Press the three (3) ridges with your thumb and push up on the lid to open. Thread the wipe through the dispensing lid and pull up to remove wipe from package. The next wipe will pop up automatically. Close lid securely between uses to retain moisture.

or
To Open Package: Push the area marked ("Press") ("Push") ("Press Here") ("Push Here") with your thumb and push up on the lid to open. Thread the wipe through the dispensing lid and pull up to remove wipe from package. The next wipe will pop up automatically. Close lid securely between uses to retain moisture.

DIRECTIONS FOR USE:

It is a violation of Federal law to use this product in a manner inconsistent with its labeling.

Do not use as a diaper wipe or for personal cleansing.
This is not a baby wipe!
Do not flush in toilet.

For plastic and painted surfaces, spot test on an inconspicuous area before use.
(This product or product name) will not harm most surfaces: including acrylic, sealed fiberglass and vinyl.
Do not use on unpainted wood.
(Note: Not recommended for unpainted wood, natural marble or brass.)

TO CLEAN AND DEODORIZE:

Wipe surface with (wipe) (towelette) (cloth) (sheet). Let air dry. Discard used (wipe) (towelette) (cloth) (sheet) in trash. Do not flush in toilet.

TO CLEAN AND DISINFECT (DISINFECTION / VIRUCIDAL* / MOLD AND MILDEW CONTROL DIRECTIONS):

Wipe (hard, nonporous) surface with (wipe) (towelette) (cloth) (sheet) until surface is visibly wet. (Use enough wipes to thoroughly wet surfaces.) (Use (enough) (extra) wipes to keep surfaces (visibly) wet for 4 minutes.) (Keep surfaces (visibly) wet for 4 minutes.) (Wipe surface and let it remain (visible) wet for 4 minutes.) Allow surface to remain wet for 4 minutes. (Let air dry.) ((Let) Permit surface to (air) dry.)
If surfaces are extremely dirty, clean first with another (wipe) (towelette) (cloth) (sheet) before disinfecting.
Discard used (wipe) (towelette) (cloth) (sheet) in trash. Do not flush (in toilet).

Rinse food contact surfaces with clean, potable water after disinfecting. Do not use to disinfect dishes, glassware or utensils.

For mold and mildew, Lonza Disinfectant Wipes Plus will effectively inhibit the growth of mold and mildew and the odors caused by them when applied to hard, nonporous surfaces. Follow disinfection instructions. Repeat treatment every seven days, or more often if new growth appears.

***KILLS HIV ON PRE-CLEANED ENVIRONMENTAL SURFACES / OBJECTS PREVIOUSLY SOILED WITH BLOOD / BODY FLUIDS** in health care settings or other settings in which there is an expected likelihood of soiling of inanimate surfaces / objects with blood or body fluids, and in which the surfaces / objects likely to be soiled with blood or body fluids can be associated with the potential for transmission of Human Immunodeficiency Virus Type 1 (HIV-1) (associated with AIDS).

SPECIAL INSTRUCTIONS FOR CLEANING AND DECONTAMINATION AGAINST HIV-1 ON SURFACES / OBJECTS SOILED WITH BLOOD / BODY FLUIDS.

Personal protection: Clean-up must always be done wearing protective gloves, gowns, masks and eye protection.

Cleaning procedure: Blood and other body fluids containing HIV must be thoroughly cleaned from surfaces and objects before application of Lonza Disinfectant Wipes Plus. Lonza Disinfectant Wipes Plus (this product) (wipe) (towelette) (cloth) (sheet) can be used for this purpose.

Contact time: Leave surface wet for 1 minute (60 seconds) for HIV-1. Use a 4-minute contact time for disinfection against all other viruses and bacteria claimed.

Disposal of infectious material: Blood, body fluids, cleaning materials and clothing must be autoclaved and disposed of according to local regulations for infectious waste disposal.

(Note to reviewer: If Avian Influenza A is listed on the label the following statement is required.)

This product is for use on hard nonporous surfaces not conducive to treatment by immersion or excess liquid against Avian Influenza A.

SANITIZING (DEODORIZING):

To sanitize (deodorize) hard, non-porous, non-food contact surfaces; wipe surface, using enough (wipes) (towelettes) (cloths) to allow treated surface to remain wet for 15 seconds for Staphylococcus aureus (Staph) (ATCC 6538), Klebsiella pneumoniae (ATCC 4352), and Campylobacter jejuni (ATCC 29428). Let surface dry. For highly soiled surfaces, clean excess dirt first.

DIRECTIONS FOR FLOOR WIPE USE:

It is a violation of Federal Law to use this product in a manner inconsistent with its labeling.

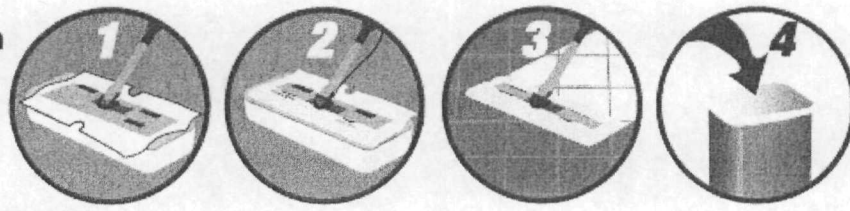
TO CLEAN AND DEODORIZE: Wipe surface with wipe. Let air dry. Discard used wipe in trash. Do not flush in toilet.

TO CLEAN AND DISINFECT: Pre-clean floor in normal manner. (Attach a premoistened wipe to the mop head using the (velcro) (fasteners) provided.) Thoroughly wet floor with wipes. (Change wipe when soiled.) or (Replace with a fresh wipe once visibly soiled or no longer thoroughly wetting the surface.) Allow surface to remain visibly wet for 4 minutes. Let air dry. On average, one wipe will clean [10] [x] square feet of floor. For a larger area you may need to use more than one wipe. Discard used wipe in trash. Do not flush. Do not use to disinfect dishes, glassware or utensils. Do not use as a diaper wipe or for personal cleansing. Contact manufacturer of wood floors prior to use.

Note: Not recommended for unpainted wood, natural marble or brass. Do not use on unfinished, oiled or waxed wood, unsealed tiles or carpet. Keep container flat and lid securely closed to keep cloths moist.

(Optional representative graphic)

Use on mop head.



TO OPEN:

1. Cut off top of pouch with scissors.
2. Remove wipes from pouch.
3. Place wipes in plastic tub.
4. Discard empty pouch into trash.

TO USE WITH MOP:

1. Unfold top wipe in tub by pulling sides of the cloth over edges of tub.
2. Place sweeper on head
3. Wrap wipe around head of sweeper.
4. Push edges of wipe into on top of sweeper head.
5. Begin wiping. No rinsing required.
6. After use, remove soiled wipe and discard in trash. Do not flush.

PACKET LABEL TO BE USED WITH MASTER CONTAINER LABEL

LONZA DISINFECTANT WIPES PLUS

EPA. Reg. No. 6836-336
EPA. Est. No. *(insert EPA Est. No. here)*

Net Contents:
Net Weight:
(optional - wipe dimensions:) X x X [inches] [in.]

Active Ingredients:

Octyl decyl dimethyl ammonium chloride	0.0909%
Dioctyl dimethyl ammonium chloride	0.0364%
Didecyl dimethyl ammonium chloride	0.0545%
Alkyl (C ₁₄ , 50%; C ₁₂ , 40%; C ₁₆ , 10%) dimethyl benzyl ammonium chloride	0.1212%
Other Ingredients:	99.6970%
Total	100.0000 ¹ %

¹ Includes weight of absorbent wipe.

KEEP OUT OF REACH OF CHILDREN

CAUTION

See outer container for Precautionary Statements and Use directions

DISPOSAL: Dispose (wipe) (towelette) (Cloth) in trash after use. Discard empty (pouch) (packet) in trash.

Lonza Inc.
90 Boroline Road
Allendale, NJ 07401

(Note to reviewer: The following are optional proprietary graphics)

