



UNITED STATES ENVIRONMENTAL PROTECTION AGENCY  
WASHINGTON, DC 20460

OFFICE OF CHEMICAL SAFETY  
AND POLLUTION PREVENTION

November 1, 2021

Jennifer DePietro  
Regulatory Assurance Specialist  
Lonza, LLC  
412 Mt. Kemble Avenue, Suite 200S  
Morristown, NJ 07960

Subject: Label Amendment – Add non-public health claims and optional marketing claims  
Product Name: Lonza Disinfectant Wipes  
EPA Registration Number: 6836-313  
Received Date: September 20, 2021  
Action Case Number/Decision Number: 00323807

Dear Jennifer DePietro:

The amended label referred to above, submitted in connection with registration under the Federal Insecticide, Fungicide and Rodenticide Act (FIFRA), as amended, is acceptable. This approval does not affect any conditions that were previously imposed on this registration. You continue to be subject to existing conditions on your registration and any deadlines connected with them.

A stamped copy of your labeling is enclosed for your records. This labeling supersedes all previously accepted labeling. Pursuant to 40 CFR 156.10(a)(6) you must submit one copy of the final printed labeling before you release the product for shipment with the new labeling. In accordance with 40 CFR 152.130(c), you may distribute or sell this product under the previously approved labeling for 18 months from the date of this letter. After 18 months, you may only distribute or sell this product if it bears this new revised labeling or subsequently approved labeling. "To distribute or sell" is defined under FIFRA section 2(gg) and its implementing regulation at 40 CFR 152.3.

Should you wish to add/retain a reference to the company's website on your label, then please be aware that the website becomes labeling under FIFRA and is subject to review by the Agency. See FIFRA section 2(p)(2). If the website is false or misleading, the product would be misbranded and unlawful to sell or distribute under FIFRA section 12(a)(1)(E). 40 CFR 156.10(a)(5) lists examples of statements EPA may consider false or misleading. In addition, regardless of whether a website is referenced on your product's label, claims made on the website may not substantially differ from those claims approved through the registration process, FIFRA section 12(a)(1)(B). Therefore, should the Agency find or if it is brought to our attention that a website contains false or misleading statements or claims substantially differing from the EPA approved registration, the website will be referred to the EPA's Office of Enforcement and Assurance.

Page 2 of 2  
EPA Reg. No. 6836-313  
Action Case Number/Decision No. 00323807

Your release for shipment of the product constitutes acceptance of these conditions. If these conditions are not complied with, the registration will be subject to cancellation in accordance with FIFRA section 6. If you have any questions, you may contact Joseph Daniels via email at [Daniels.joseph@epa.gov](mailto:Daniels.joseph@epa.gov).

Sincerely,



For Eric Miederhoff  
Product Manager Team 31  
Regulatory Management Branch I  
Antimicrobials Division (7510P)  
Office of Pesticide Programs

Enclosure: Stamped Label

Note to reviewer:

[Items in brackets [AAA] are optional and may/may not be included on final label]

{Items in braces {AAA} are for information purposes and will not appear on final label}

# LONZA DISINFECTANT WIPES

[One-Step<sup>10</sup> Disinfectant<sup>14</sup> / Sanitizer<sup>15</sup>]

Active Ingredients:

Octyl decyl dimethyl ammonium chloride.....	0.069%
Dioctyl dimethyl ammonium chloride.....	0.028%
Didecyl dimethyl ammonium chloride.....	0.042%
Alkyl (C <sub>14</sub> , 50%; C <sub>12</sub> , 40%; C <sub>16</sub> , 10%) dimethyl benzyl ammonium chloride .....	0.093%
Other Ingredients:.....	99.768%
Total.....	100.000% <sup>1</sup>

**KEEP OUT OF REACH OF CHILDREN**

**CAUTION [PRECAUCIÓN]**

See [left] [side] [right] [back] [bottom] panel for Precautionary Statements and First Aid

Manufactured by:

Lonza, LLC  
412 Mount Kemble Avenue  
Suite 200S  
Morristown, NJ 07960

EPA Reg. No. 6836-313

EPA Est. No. (as indicated on container)

Net Contents: insert # [premoistened] [towelettes] [wipes] [cloths] [disinfecting] [sanitizing] [antibacterial]  
[cleaning] [wet] [multi-purpose] [touch-up] [pre-moistened cloths] [sheets]

Net Contents: (expressed as avoirdupois pounds and ounces)

Minimum Wt.

[optional: wipe dimensions:] X x X [inches] [in.]

[Barcode]

Made in [insert country of production]

{Note to Reviewer: for multi-packs}

[2-pack]

[3-pack]

[QR Code]



[Do not flush]

**ACCEPTED**

Nov 01, 2021

Under the Federal Insecticide, Fungicide  
and Rodenticide Act as amended, for the  
pesticide registered under  
EPA Reg. No. 6836-313

## **PRECAUTIONARY STATEMENTS**

### **HAZARDS TO HUMANS AND DOMESTIC ANIMALS**

Caution. Causes moderate eye irritation. Avoid contact with eyes or clothing. Wash thoroughly with soap and water after handling and before eating, drinking, chewing gum, using tobacco or using the toilet.

### **FIRST AID**

**If in eyes:** Hold eye open and rinse slowly and gently with water for 15-20 minutes. Remove contact lenses, if present, after first 5 minutes, then continue rinsing eye.

Call a poison control center or doctor for treatment advice. Have the product container or label with you when calling poison control center or doctor or going for treatment.

*{Optional Emergency contact information}*

*[For emergency information on [product, usage, etc.], call (1-XXX-XXX-XXXX), Monday through Friday, 9 a.m. to 5 p.m. After 5 p.m. call your poison control center at 1-800-222-1222.]*

*{Note to reviewer: Nonrefillable container}*

### **STORAGE AND DISPOSAL**

Store in original container in areas inaccessible to children. Keep securely closed. Nonrefillable container. Do not reuse or refill this container. Discard empty container in trash or recycle (if available).

*{Note to reviewer: Refillable container}*

### **STORAGE AND DISPOSAL**

Store in original container in areas inaccessible to children. Keep securely closed. Refillable container. [Reuse] [Refill] empty container only with Lonza Disinfectant Wipes [refills]. Do not reuse this container except as described. If not refilling, discard empty container in trash or recycle (if available).

*{Note to reviewer: Pages 3-20 are considered optional marketing language. All designators (i.e. asterisks and numbers) used throughout the label may be interchanged as needed on final printed label.}*

*{ Note to reviewer: The following claims containing “New” or “Improved” may only be used for a period of six months after a supplemental registrant obtains a new distributor registration or uses a revised or alternate formula, beginning when the supplemental product is first sold or distributed.}*

- 2 New Wipes
- Introducing
- Introducing new
- New[!]
- New [Convenient] [Amazing] Package
- New [Disinfecting] [Sanitizing] [Wipes] [cloths]
- New Dual Action [Wipes] [Cloths] [!]
- New easy to dispense
- New easy-glide dispensing top
- New Easy [Start Lid] [Start Package] [Grab Lid]
- New EZ [to start lid] [start package] [Grab Lid]
- New larger [bigger]-sized [wipe] [cloth]
- New Larger Size
- New [thick] [textured] [wipe] [cloth]
- New Top
- New tougher [wipe] [cloth] for tougher cleaning
- New tougher [wipe] [cloth] for your tough[er] jobs
- New [Wipes] [cloths]
- [New] [Now] [less-residue] [low-residue] [low-streak] formula

#### **CLEANING CLAIMS:**

- [25%] [30%] [50%] more grease cleaning power
- [A] Clean you can trust
- [All] [Multi-purpose] kitchen [everyday] [daily] [touch-up] [cleaning]
- Baked-on messes
- Clean more with less
- Clean surfaces at your fingertips.
- Clean[s] to a virtually streak-free shine
- Clean with just a wipe or a touch up
- Cleaning
- Cleaning just got a whole lot easier
- Cleans
- Cleans [away] [up] dirt, dust and hair
- Cleans [grease] better than ever
- Cleans faster because the [scrubbies] [texture] removes [stubborn] [stuck on] [dirt] [messes]
- Cleans more than ever
- Cleans things you never thought a [wipe] [cloth] could
- Cleans to a [Sparkle] [Shine]
- Cleans [tough messes] [tough grease] [baked on grease] [sticky messes]
- Cleans what you can't see
- Convenience of a wipe [a cloth]
- Convenient
- Cuts through [tough] [dirt] [stains] [grime] [soils] [dried on stains] [dried on soils]
- Cuts Through [Tough] [Messes] [Grease] [Grime]
- Deep Clean
- [Dissolve[s] ] [Cleans] [Removes] [Eliminates] dirt and soils
- Dual Action [Wipes] [Cloths]
- Dual Action Deep Clean
- [Everyday] [Regular] [Cleaning] Wipes
- [Everyday] [Regular] Cleaning

## **CLEANING CLAIMS (Cont.):**

- [Everyday] [Regular] Wiping
- Extra Power for your tough cleaning jobs
- Extra Power wipe for cleaning extra tough [jobs] [messes]
- Fast drying; leaves [virtually] no dull or sticky residue
- [For] [deep] scrubbing
- [For] [deep] scrubbing PLUS surface cleaning
- [For] deep cleaning
- For [light touch ups] [quick clean-ups] [in one easy step]
- For a Powerful Clean
- For everyday messes
- For the quick touch ups, try Lonza Disinfectant Wipes
- For when a regular [wipe] [cloth] [just] can't get the job done
- Gets up stuck-on messes [so you don't have to get on hands and knees]
- Greasy messes
- [Great] [Designed] [Built] [Tough] [Textured Design] for your Toughest Messes
- [Great] [Designed] [Built] for Tough [Messes] [Cleaning]
- [Great] for [Spring] [Home] [Kitchen] [Bathroom] [Dorm] [Office] [Cart] [Car] Cleaning
- [Great] for Cleaning Your [Home] [Kitchen] [Bathroom] [Room] [Dorm] [Office] [Cart] [Car]
- Great for Cleaning a Classroom
- Great for cleaning around the toilet
- Great on Kitchen grease
- Grimy messes
- Handles daily clean-ups with no need for additional sprays, sponges or buckets.
- Heavy [light] duty [jobs]
- Helps you finish [cleaning] fast [quickly]
- Leaves [no residue] [a streak free shine]
- Leaves your [house] [bathroom] [kitchen] fresh and clean
- Life doesn't stop for messes, [Wipe] [Clean] it up
- Life is Messy, [Wipe] [Clean] it up
- [Long lasting] [lasts a long time] [goes further] [last longer]
- Low-streak formula is great on [glass] [mirrors] [dark countertops] [stainless steel] [stovetops] [stainless]
- Makes [your job] [cleaning] [easier] [easy]
- More scrubbing power
- No [mixing] [spraying] [mess] [and / or fuss] [no muss]
- No more need to get on your hands and knees to [scrub] [or clean] stubborn spots.
- No rinsing required
- No sprays, no sponges, no mess
- Now [2x] [3x] [4x] [5x] the [grease] cleaning power
- Now cleaning is [faster] [easier] than [ever] [before]
- Now cleans better on grease
- Our most powerful [grease] [deep] cleaning wipe ever
- Our most powerful cleaning formula ever
- Picks up more messes than other [wipes] [cloths]
- Powerful cleaner for kitchen and bath
- Powers through [tough messes] [the dirt] [the grime]
- Powers through tough messes
- Powers through tough messes all over the house
- Quick easy clean-ups.
- Removes the grime to give you more time [alt: Removes the grime so you have more time]
- Scrub-N-Wipe[s]
- [Scrubs] [cleans] better than ever
- Scrubs like no other [wipe] [cloth]
- Sticky messes
- Streakfree
- The convenient way to keep your home looking "just cleaned"

### **CLEANING CLAIMS (Cont.):**

- The wipe to use when you don't have much time
- Touch Up
- Tough cleaning [made easy] [made easier] [at your fingertips]
- Tough Cleaning at your Fingertips!
- Tough cleaning without the tough cleaning smell
- Tough Enough to Clean a Classroom
- Tough enough to do the bigger cleaning jobs.
- Traps & locks away [dirt] [grease] [messes] [crumbs] [hair] [lint] [dust] [dirty greasy messes]
- Traps and locks away dirt
- Traps and locks grease and grime
- Use [daily] to clean bathroom soils such as soap, soap scum, toothpaste, hair spray, hair gel, cosmetics, shaving cream, hand or body lotion.
- Wipe down your seat. Bring [wet] [wipes] [or] [handi-wipes] to wipe down the [arm rests] [window areas] [seatbelt clasps] [and] [tray table] where you'll be sitting.
- [Wipes] [Cloths] are good for quick touchups
- Wipes Away [Tough] [Everyday] [Messes] [Grease] [Grime]
- Wipes Out [Tough] [Everyday] [Messes] [Grease] [Grime]
- Wipes Through [Tough] [Everyday] [Messes] [Grease] [Grime]
- Wipes to a [Clean] Shine [Sparkle]
- Wipes Up [Tough] [Everyday] [Messes] [Grease] [Grime]
- Won't leave greasy residue on hands
- Worry free cleaning

### **FRESHNESS, CLEANING AND ODOR ELIMINATION CLAIMS:**

- A fresh take on tough cleaning
- An effective way to clean and deodorize against odor-causing bacteria.
- Deodorizes
- Don't just mask odors – [eliminate][neutralize] them
- Eliminate dirt and [neutralize] odor
- [Eliminates][Neutralizes] odors [and freshens] on contact
- For a cleaner, fresher [home] [house], great for [all around] the [house] [home] [kitchen] [bath]
- For a long lasting scent experience
- Fresh, clean scent
- Freshens [as you clean]
- Leaves a [light] [clean] [fresh] scent
- Leaves a clean, fresh scent
- Light, clean scent
- Long lasting scent
- Powers through odor
- Power[s] through [tough] [messes] [dirt] [and grease] and [help[s]] [eliminate[s]][neutralize[s]] odors
- Tough on odor
- Wipes out odors
- [With a] [fresh] [clean] [citrus] [lemon] fragrance

### **Scent Names**

*{Note to reviewer: each scent below may also be represented by a graphic depicting the corresponding scent with the exception of apple which will be submitted to the Agency for review.}*

**[ULTRA FRESH] / [FRESH] / [SUMMER] CITRUS/ FLORAL/ MINT/ PINE / LEMON / WOODY / LIME / MELON/  
CLEAN / WATERFALL / [ULTIMATE] ORANGE / [SPARKLING] APPLE / INVIGORATING BREEZE / SPRING  
GARDEN / LAVENDER [FRESH] / GRAPEFRUIT]  
[FRAGRANCE / SCENT / SCENTED]**

## Scent Names (Cont.)

{Note to reviewer: each block below also represents a graphic depicting the corresponding scent with the exception of citrus, apple, and berries, which will be submitted to the Agency for review.}

- [with] [fresh scent] [scent name] [fresh scent]
- (scent names)
- Meadows & Rain
- Lavender Vanilla & Comfort
- Vanilla Lavender & Comfort
- Citrus & Light
- Spring & Renewal
- Cool Mist
- Eucalyptus Pine
- Fresh Lavender
- Island Retreat
- Mountain Air
- New Car
- Linen & Sky
- Rocky Springs & Cool
- Apple Spice & Delight
- Powder & Elegance
- Blossoms & Breeze
- Summer & Splash
- Berries & Paradise
- Pure Linen
- Vanilla
- Warm Apple Spice
- Wild Berry
- Orange
- Fresh Outdoors

## BACTERIOSTATIC CLAIMS:

- 24 [hour] [h] [hr] odor-causing bacteriostatic barrier
- [24 [hour] [h] [hr]] Odor-causing bacteria prevention [for 24 hours]
- [Prevents] [controls] odor-causing bacteria for 24 [hours] [h] [hr]
- [Prevents] [controls] growth of odor-causing bacteria for 24 [hours] [h] [hr]
- [24 hour] [24 h] [24 hr] [48 hour] [48 h] [48 hr] [72 hour] [72 h] [72 hr] odor-causing bacteriostatic barrier
- [[24 hour] [24 h] [24 hr] [48 hour] [48 h] [48 hr] [72 hour] [72 h] [72 hr]] Odor-causing bacteria prevention [for 24] [48] [72] hours]
- Controls the growth of odor-causing bacteria [for 24] [48] [72] hours]

## ANTIBACTERIAL CLAIMS:

- 3 [steps] in 1- wipes, scrubs and disinfects [so you finish faster]
- 3 [steps] in 1- wipes, scrubs and [sanitizes] [so you finish faster]
- All around the house<sup>10</sup> [disinfecting] [sanitizing] [cleaning formula]
- Antibacterial
- Antibacterial Formula
- [Antimicrobial] [antibacterial] [disinfecting] [sanitizing]
- Clean and [Disinfect] [Sanitize] from Classroom to Playground [and everything in between<sup>10</sup>]
- Cleans and disinfects<sup>14</sup> in one [easy] step
- Cleans and sanitizes<sup>15</sup> in one [easy] step
- Cleans and [disinfects] [sanitizes] [without scratching] [surfaces<sup>10</sup>]
- Cleans and [disinfects][sanitizes] external electronic surfaces including tv's, radios, cell phones, PDA devices, computer keyboards, lap tops, gaming consoles, etc.
- Cuts [tough] grease, kills bacteria
- Daily [Surface<sup>10</sup>] [Disinfectant] [Sanitizer] [Cleaner]
- Deep Clean and Disinfect [!]
- Deep Clean and [Sanitize] [!]
- [Designed] [Built] for [cleaning] [wiping] everyday
- [Designed] [Built] for Everyday [Disinfecting] [Sanitizing] [Cleaning] [Wiping]
- [Disinfect] [Sanitize] [Surfaces<sup>10</sup>] [Your House<sup>10</sup>] [Your Kitchen<sup>10</sup>] [Your Bathroom<sup>10</sup>] [Daily] [Everyday]
- [Disinfect] [Sanitize] [Your Desk] [Your Office] [Your Room] [Daily] [Everyday]
- [Disinfecting] [Sanitizing] Formula
- [Disinfecting] [Sanitizing] [Wipes] [Cloths]
- [Disinfects] [Sanitizes]
- [Disinfects<sup>14</sup>] [as it cleans] [and scrubs in one easy step] [without [a] [the] [that] disinfectant smell]
- [Sanitizes<sup>15</sup>] [as it cleans] [and scrubs in one easy step] [without [a] [the] [that] sanitizer smell]
- [Disinfects] [Sanitizes] as it Deep Cleans [!]
- Disinfects [Sanitizes], deep scrubs and surface<sup>10</sup> cleans



## ANTIBACTERIAL CLAIMS (Cont):

- Disinfects surfaces<sup>10</sup> by killing [99.9%] SARS-Related Coronavirus 2 [SARS-CoV-2] [USA-WA1/2020] [in one-step<sup>14</sup>]
- Disinfecting wipes with scrubbing action
- Each pre-moistened wipe kills 99.9% of germs<sup>2</sup>, including the Flu Virus\*, while cleaning [vinyl], [glass] [and more] to a virtually streak free finish.
- Ease of disinfection has never been simpler
- [Easy] way to [clean and] disinfect<sup>14</sup> [in one-step]
- [Easy] way to [clean and] [sanitize<sup>15</sup>] [in one-step]
- Effective against SARS-Related Coronavirus 2<sup>10</sup> [SARS-CoV-2] [USA-WA1/2020] [in 4 minutes]
- [Effective against] [Disinfects] [Kills] [99.9%] SARS-CoV-2<sup>10</sup> [virus]
- [Effective against] [Disinfects] [Kills] [99.9%] SARS-CoV-2<sup>10</sup> virus, the cause of COVID-19
- Effective in the presence of 5% serum contamination
- Effectively [disinfects] [sanitizes] common household surfaces<sup>10</sup>
- Everyday [Surface] [Disinfectant] [Sanitizer] [Cleaner]
- [Finally] a [wipe] [cloth] that cleans [and] [disinfects] [sanitizes]
- Great for Everyday [Disinfecting] [Sanitizing] [Cleaning] [Wiping]
- Hospital Disinfectant
- Kills 99.9% of [Germs<sup>2</sup>] [Bacteria] [Viruses\*] [Bacteria and Viruses\*]
- Kills bacteria [while it cleans]
- Kills Cold (and Flu virus\*)
- Kills coronavirus<sup>10,13</sup> that causes COVID-19
- [Kills] [Effective against] the virus<sup>10,13</sup> that causes COVID-19
- Kills [the] COVID-19 virus<sup>10,13</sup>
- [Kills] [Eliminates] 99.9% SARS-Related Coronavirus<sup>10</sup> [SARS-CoV-2] [USA-WA1/2020] [causative agent of COVID-19] [the virus that causes COVID-19]
- [Kills] [Removes] [Destroys] [*Insert pathogen or pathogens other than avian influenza A from lists on pages 19-20*] on [pre-cleaned] environmental surfaces<sup>10</sup>
- [Kills] [Removes] [Destroys] 99.9% of bacteria
- [Kills] [Removes] [Destroys] 99.9% of bacteria, leaves [leaving] surfaces<sup>10</sup> [clean and] disinfected
- [Kills] [Removes] [Destroys] avian influenza A H3N2 [and] H5N1 on pre-cleaned environmental surfaces<sup>10</sup>
- [Kills] [Fights] Germs<sup>2</sup> [Influenza Type A/Brazil, the Flu Virus] [Bacteria] [Bacteria and Viruses\*] [Viruses\*]
- [Kills] [Fights] Wipe Out 99.9% of [Germs<sup>2</sup>] [Influenza Type A/Brazil, the Flu Virus] [Bacteria] [Viruses\*]
- Kills germs<sup>2</sup>
- Kills Salmonella enterica, Methicillin-Resistant Staphylococcus Aureus & Flu Virus\*.<sup>10</sup> [!]
- Kills the coronavirus<sup>10,13</sup> that causes COVID-19
- Kills the Flu Virus\*.<sup>10</sup>
- Kills the virus<sup>13,10</sup> that causes COVID-19
- Kills [99.9% of] SARS-CoV-2<sup>10</sup>, which causes COVID-19
- Kills [Wipes Out] 99.9% [of] [Rotavirus] [Listeria monocytogenes] [MRSA] [Methicillin-Resistant Staphylococcus Aureus] [Norwalk]
- Leaves surfaces<sup>10</sup> clean and [disinfected] [sanitized]
- [Proven to] kill[s] coronavirus<sup>10,13</sup>
- [Proven to] kill[s] the virus<sup>10,13</sup> that causes COVID-19
- [Proven to] wipe out<sup>14</sup> 99.9% of coronavirus<sup>10,13</sup>
- Reduce risk of cross contamination between treated surfaces<sup>10</sup>
- Remove [99.9% of] [Bacteria] [Germs<sup>2</sup>] [from Your] [Home<sup>10</sup>] [Kitchen<sup>10</sup>] [Bathroom<sup>10</sup>] [Office<sup>10</sup>] Surfaces<sup>10</sup>
- Sanitize [commonly touched] [household] surfaces<sup>10</sup> in [just] seconds[!]
- [Sanitize][Disinfect] [shopping][grocery] cart[s] [handle[s]]
- [Sanitize][Disinfect] [airplane][airliner] [tray[s]] [tray table[s]]
- [Sanitize][Disinfect] any room in the house
- [Sanitize][Disinfect] [bathroom][kitchen] [sink[s]] [faucet[s]] [toilet[s]] [flush handle][seat] [light switch] [door][handle][knob]
- [Sanitize][Disinfect] [camping][hiking][boating] equipment

## ANTIBACTERIAL CLAIMS (Cont.):

- [Sanitize][Disinfect] [cell][mobile][phones]
- [Sanitize][Disinfect] [computers[s]][keyboards] [touchpads] [mouse]
- [Sanitize][Disinfect] [daycare][childcare] [facilities]
- [Sanitize][Disinfect] [desk tops] [work tables] [work areas] [school desks] [shared equipment]
- [Sanitize][Disinfect] [hotel][motel][public][shared] [TV][television[s]] [remote control[s]][remote[s]] [telephone[s]][phone[s]] [computer[s]][keyboard[s]] [fax machine[s]]
- [Sanitize][Disinfect] the surfaces<sup>10</sup> of [cabinets], [chairs], [counter[s]top[s]], [shower][door[s]][stalls], [bathtub[s]], [sink[s]], [vanities], [vanity][top[s]], [bathroom][fixture[s]][faucet[s]]
- [Sanitize][Disinfect] the surfaces<sup>10</sup> of [personal protective equipment<sup>10</sup>][PPE<sup>10</sup>][respirators<sup>10</sup>][full face breathing apparatus<sup>10</sup>][gas masks<sup>10</sup>][goggles<sup>10</sup>][face shields<sup>10</sup>][hearing protection<sup>10</sup>][ear covers<sup>10</sup>][safety ear muffs<sup>10</sup>][helmets<sup>10</sup>][protective head gear<sup>10</sup>][hard hats<sup>10</sup>]
- [Sanitize][Disinfect] the hard, non-porous surfaces of [sports][sporting][gym][athletic][workout] [equipment][machines]
- Sanitize][Disinfect] the hard, non-porous surfaces of [wrestling][gymnastic][gym][athletic][yoga][tumbling] [mats][pads]
- [Sanitize][Disinfect] the [exterior] of [common] [household][kitchen] appliances
- [Sanitize][Disinfect] [waiting rooms<sup>10</sup>] [public areas<sup>10</sup>]
- [Sanitize][Disinfect] [your][common] [household] [surfaces<sup>10</sup>][items[:][such as] [high chairs<sup>10</sup>] [booster seats<sup>10</sup>] [strollers<sup>10</sup>] [car seats<sup>10</sup>] [cribs<sup>10</sup>] [tables] [tabletops] [counters] [countertops] [appliances] [sinks] [glazed tiles] [light switches] [door handles] [railings] [telephones] [trash][garbage][can[s]][receptacle[s]][bin[s]]
- The convenient way to [disinfect] [sanitize] your household surfaces<sup>10</sup>
- The smart [way to] clean [and disinfect] [and sanitize]
- The wipe that [disinfects] [sanitizes] while it cleans
- Two in one action [cleans and [disinfects<sup>14</sup>] in one easy step]
- Two in one action [cleans and [sanitizes<sup>15</sup>] in one easy step]
- Wet [Mopping] Cloths [wipes] clean and disinfect
- Wet [Mopping] Cloths [wipes] clean and sanitize
- Wipe Away 99.9% of [Germs<sup>2</sup>] [Influenza Type A/Brazil, the Flu Virus<sup>10</sup>] [Bacteria] [Viruses\*]
- Wipes out<sup>14</sup> 99.9% of COVID-19-causing coronavirus<sup>10,13</sup>
- Wipes out<sup>14</sup> 99.9% of COVID-19-causing virus<sup>10,13</sup>
- Wipe out<sup>14</sup> 99.9% of germs<sup>2</sup>
- Wipes out<sup>14</sup> 99.9% of the coronavirus<sup>10,13</sup> that causes COVID-19
- Wipes out<sup>14</sup> 99.9% of the COVID-19 virus<sup>10,13</sup>
- Wipes out<sup>14</sup> 99.9% of the virus<sup>10,13</sup> that causes COVID-19
- Wipe Up 99.9% of [Germs<sup>2</sup>] [Influenza Type A/Brazil, the Flu Virus<sup>10</sup>] [Bacteria] [Viruses\*]
- [With proven] Antibacterial Action
- Worry free [disinfecting] [sanitizing] [cleaning]

## SANITIZING CLAIMS: {Below claims will only be used when Sanitizing directions are included on final label}

- 99.9% effective against [Staphylococcus aureus] [Klebsiella pneumoniae] [Campylobacter jejuni ] in [just] 15 seconds[!]<sup>15</sup>
- 99.9% effective against bacteria in [just] 15 seconds[!]
- Effective in sanitizing [your][household][kitchen][bathroom][hard, nonporous surfaces]<sup>15</sup>
- Kills 99.9% of bacteria in [just] 15 seconds[!]<sup>15</sup>
- Kills 99.9% of {*note: choose one or more of the following pathogens*} [Staphylococcus aureus ] [Klebsiella pneumoniae ] [Campylobacter jejuni ] in [just] 15 seconds[!]<sup>15</sup>
- Sanitizing Wipes
- [This product or product name] is an effective sanitizer against [Staphylococcus aureus] [Klebsiella pneumoniae ] [Campylobacter jejuni ]<sup>15</sup>

**USAGE CLAIMS:**

- For Homes, Institutional and Industrial Use
- For household hard, nonporous surfaces [all around the house] indoor and outdoor
- For use [at home], [away from home], [in public places] [on the go]
- Multi-purpose
- Multi-surface
- [Send] Bring Wipes [Me] to School
- Specially formulated for use in the [kitchen] [bathroom]

**VALUE CLAIMS:**

- [2] [Two] [1] [One] For You [1] [One] For School
- 2 Free Cloths
- 2 [Wipe] [cloth] Trial Pack
- 2 [Wipe] [cloth] Starter Size
- [Assorted] [Mixed] [Special] [Variety] [Multiple] [Multi] [Bundle] [Pack]
- Back to School [Variety] [Special] [Bundle] [Pack]
- Bonus Pack[!]
- Bonus Twin Pack
- Bonus Size
- Convenient [size]
- Convenience
- Family Pack
- Get it done with one
- Guaranteed [to clean longer] [you'll use fewer wipes to clean more]
- Large Size, Small Size, Bonus Pack
- More cleaning in one wipe
- More cleaning power per wipe
- One wipe goes a long way
- One wipe will get it done
- Sample Size
- [Special] School [Variety] [Bundle] [Pack]
- Spring Cleaning [Special] [Value] [Bonus] Pack]
- Travel [Size] [pack]
- Value
- Value Size
- Value Pack
- Variety Pack
- XX% More [Free] Wipes, Bonus Size, [Bonus] [Free] [27-ct] [35-ct] [XX-ct] Wipes, XX for the Price of YY.

#### **SURFACE SAFETY CLAIMS:**

- Non-abrasive
- Non-scratch[ing]
- Non-scratching
- Not recommended for use on LCD computer and/or television screens.
- These [wipes] [towelettes] [cloths] will not harm [most] surfaces.
- Will not harm vinyl, laminate wood and ceramic<sup>3</sup>
- Will not scratch

#### **SUBSTRATE CLAIMS:**

- XX% thicker [\*] [than an ordinary wipe] [and] [&]
- [XX] [XX%] Larger [\*] [and] [&]
- XX [insert brand name] wipes = YY [ordinary] [regular] wipes [\*]  
\*compared to [ordinary] [regular] X" [by] [x] Y" [wipe][s] [towel][s], [cloth][s]
- 100% Cotton Wipe fabric
- 2 sided wipe [cloth]
- 2 Sides
- [2 Sides:] [scrubbing power for tough messes] [wiping side for quick cleanups]
- [2 sides:] [one for scrubbing] [one for mopping]
- 30% Thicker and Quilted Texture [for Tough] [Messes] [Cleaning]
- [30%] thicker wipes
- [Big] [, tough] cleaning wipe built to [last through every day and tough jobs][do more so that you can use less][fewer].
- Cleans [up to] [3x][3 times][2x][2 times] the area of an ordinary wipe<sup>12</sup>
- [Cloth-like texture] [Textured] for scrubbing power
- Cloth-like [textured] [strong]
- Cloths [Wipes] quickly remove dirt, spots and smudges
- Dual [action] [purpose] [scrubs] [wipes]
- Dual Action [Cloths] [Wipes]
- Durable [giant][mega] wipe for heavy duty cleaning
- [Flushable] [and Dispersible] substrates [wipes] [towelette] [cloth]
- Get surfaces clean with fewer wipes
- Grooved for [Grime] [Tough Messes] [Grease]
- Improved scrubbing texture
- Larger [bigger]-sized wipe
- Larger Size
- Lint-free
- Long-lasting wipe handles the job from start to finish
- Made with scrubbing fibers
- [Our] toughest wipe ever
- Premoistened
- [Premoistened] [wet] [disinfecting] [sanitizing] [textured] [antibacterial] [wipes] [towelettes] [cloths]
- [Quilted Texture] [Textured] to [Scrub] [Power] [Fight] Through Tough Messes
- Scrubbing Action Wipes
- [Special] [Unique] 3-D Texture for Tough Messes
- [Strong] [Thick] wipe
- Strong wipe for Heavy Duty cleaning
- Strong wipe for tougher [jobs] [messes]
- Stronger Wipe
- [Substrate] [Wipe] [Towelette] [Cloth] [material] derived 100% from [wood pulp] [cotton] [cellulose] [recycled cellulose]
- Takes on the tough stuff

**SUBSTRATE CLAIMS (Cont.):**

- Takes on tough cleaning
- [Textured cloth] gets up stubborn stuck on messes
- Textured [cloths] [towelettes] clean floors faster [and easier]
- Textured cloth [wipe] traps and locks dirt [deep into ridges]
- Textured [Wipe] [cloth] [towelette] [for tough jobs] [for tough cleaning]
- Textured for better [cleaning] [scrubbing] power
- Textured to Pick Up Particles
- The wipe that is [strong] [durable] [thick] [heavy] enough to scrub [and] [clean]
- Thick, strong wipe
- Thick [wipe], cloth-like texture
- Thicker
- Thicker than an ordinary wipe
- Thicker wipe [cushionyTHICK®]
- Thicker, cloth-like feel for tough messes
- Tough cleaning power
- Tough like a towel
- Tough [Textured] Wipes
- [Tough] [Thick] wipe[s] for tough [cleaning] [messes]
- Tough[er] wipe for tough[er] cleaning [jobs]
- [Unique] [Special] [Thick] [Quilted] Texture for Tough [Messses] [Cleaning]
- With [Magic Lock] [Magic Scrub] [Trap n' Lock] [Magic Quilt] fiber[s]
- With a cloth-like 3D texture
- With extra cleaning power [wipes] [sheets] [cloths]
- With [extra] scrubbing power
- With extra strength [wipes] [sheets] [cloths]
- Works like a cloth

*{Note to reviewer: A representative graphic of a substrate may be added to the label. Only a graphic of the substrate actually being used can be added to the final printed label}.*

**PACKAGING CLAIMS:**

- Better [package] [dispensing]
- Breakthrough package
- [Convenient] [Hassle-free] [One-hand] dispensing
- Dispenses better
- Dispenses Like A Tissue [Tough Like A Cloth [Towel]]
- Dispenses like a tissue, cleans like a cloth
- Easier dispensing
- Easy [dispensing] [Glide Lid]
- Easy dispense [lid] [package]
- Easy dispensing [and] [tough texture] [for the ultimate wipes experience]
- [Easy] [EZ] start
- Easy [EZ] Dispenser
- Easy [Start Lid] [Start Package] [Grab Lid]
- EZ [to start lid] [start package] [Grab Lid]
- EZ dispensing lid
- EZ [Easy] to use lid
- Easy to [open] [thread] [access lid] [dispense]
- Easy to use
- Easy-glide dispensing top
- [Eco-shape Canister]
- Energy Efficient Canister
- Fewer rips, bunches, and snags
- Great dispensing lid
- [Just like a tissue box] [Tissue box dispensing]
- Just [pull] [pop] wipe and toss.
- No [more] [pinched fingers] [rips] [tears]
- One at a time [dispensing, like a tissue box]
- One wipe at a time dispensing
- Only use approved refill packs.
- Package breakthrough
- Package is 100% recyclable
- Package contains xx% recycled materials
- Package contains xx% post consumer waste
- Pop up
- Pop and go
- Pop and Clean
- Portable
- Recyclable packaging
- Refill [size] [pack] (*Refill for Lonza Disinfectant Wipes container*) [tub]
- [Regular] [and] [Everyday] Wipe Pack
- Specially designed package that easily dispenses one at a time

{Note to reviewer: The following may only be used if the Supplemental Registrant has documentation to support these claims.}

- Wipe fabric made from 100% renewable resources
- [Substrate] [Wipe] [Towelette] [Cloth] composed of 100% [x%] recycled materials
- [Substrate] [Wipe] [Towelette] [Cloth] composed of 100% [x%] renewable materials
- Converted with 100% [x%] wind energy
- Less Oil Consumption], [Landfill Waste], [Production Energy], [and] [Freight Energy]
- [Made with] X% less plastic
- [Made with] X% less plastic [than similar size containers][than previous[ly] used container[s]]
- Package contains xx% recycled materials
- Package contains xx% post consumer waste
- Packaged with 100% [x%] wind energy
- Packaging contains XX% [post-consumer waste] [recycled materials]
- Produced with Wind Energy
- The product was manufactured with 100% Wind Energy
- [This product was] [Produced] [Manufactured] with [100%] [x%] wind energy

#### FLOOR MOP CLAIMS:

- Fits most sweepers
- Fits (*insert name of mop*)
- Fits leading sweeper products [tools]
- Fits leading sweepers
- Fits Lysol Quick Clean & Swiffer®<sup>4</sup> Tools.
- Fits Most Popular Brands
- Fits Swiffer®<sup>4</sup>
- Fits Swiffer®<sup>4</sup> Mop-Head
- Fits Swiffer®<sup>4</sup> or Pledge Grab-It®<sup>5</sup> Mop Heads
- For Mopping

#### STARTER KIT CLAIMS:

- 2 in 1 Starter Kit
- \$X in [LYSOL®]<sup>9</sup> refill coupons inside
- Assemble [[4]-piece mop]
- [Attach [cloth to mopping head]] [Clean] [Toss]
- (*Brand/Sub-brand/Product Name*) Dry [Mopping] [cloths] [wipes] refills [are available] [separately]
- (*Brand/Sub-brand/Product Name*) Wet [Mopping] [cloths] [wipes] refills [are available] [separately]
- Cleans the floor and baseboard simultaneously
- Coupons inside
- Dry [Mopping] Cloths [wipes] pick up dust, dirt and hair. [Deep ridges and grooves trap and lock it in.]
- [Flaps] Flip[s] up [to clean] [corners] [and] [baseboards]
- [Flaps] Flip[s] up to get into hard to reach areas
- [For] [deep] corner and baseboard cleaning
- [For] [quick] [easy] Assembly
- For Sweeping and [&] Mopping
- Gets into corners [and small spaces] easily
- Includes: (*Brand/Sub-brand/Product Name*) Mop, [2] Wet Mopping Cloths [wipes] and [2] Dry Mopping Cloths [wipes]
- [LYSOL®]<sup>9</sup> [Sub-brand/Product name] [Mopping] Kit
- [No-touch,] easy attachment of cloth [wipe] [to mop]
- Push [activation] slide [in] [one] direction] to [raise] [engage] flaps
- Push [activation] slide [in] [other][opposite] [direction] to [disengage] [lower flaps]
- Refills for (*Brand/Sub-brand/Product Name*) Wet [mopping] [cloths] [wipes] and (*Brand/Sub-brand/Product Name*) Dry [mopping] [wipes] [cloths] are available [separately]
- Starter [Mopping] Kit

**STARTER KIT CLAIMS (Cont.):**

- Use [the] (*Brand/Sub-brand/Product Name*) wet [mopping] cloths [wipes] to clean as directed
- Use[s] 100% of the surface of the cloth [sheet] when used with [Clean-Flip™] (*Brand Name*) Mop.
- Use[s] the whole surface of the cloth [or sheet] when used with [Clean-Flip™] (*Brand Name*) Mop.

**OTHER CLAIMS:**

- 100% satisfaction guaranteed or your money back. If you are unsatisfied for any reason, contact us for a full refund
- [After use], just toss wipe away [in trash][in garbage].
- Bleach Free [formula]
- Cleaning Advice? Visit “insert website address”
- Clear drying formula
- Clear,drying formula for multiple surfaces.
- Comments?
- Contains No Phosphate
- Do not flush [in toilet].
- Do not use as a diaper wipe or for personal cleansing.
- Do not use for personal cleansing.
- Does not contain [chlorine] bleach.
- For more Tips & Tricks, visit (insert website)
- For questions or comments please call (*Insert phone #*) or visit our website at (*insert website*)
- Fragrance-free
- Call “Insert phone #”
- Made in the USA [of] [U.S.] [and [imported] [global] [parts] [components]]
- Mail the original UPC and purchase receipt within 30 days
- Money Back Guarantee
- No harsh scent
- [NOTE:] Not for personal cleansing.
- Phosphate free
- Quality Guaranteed
- Questions [or comments]? [Please] [Visit] [(“insert website”)] [or] [Call] [(“Insert phone #”)]
- If you are not completely satisfied with this product, return it for a refund or replacement.
- Ready to Use
- Save time with [this product or product name][!]
- Saves steps
- Saves Time
- This is not a baby wipe!
- This product contains no [phosphates or] phosphorous [compounds].
- Try the full line of (*insert company name*) Wipes
- [Visit] “insert website address” [for details]
- Visit our website for additional products and product information
- We work hard so you don't have to!®



### **Lonza Disinfectant Wipes:**

- deliver non-acid [disinfectant] [sanitizer] and cleaning performance
- deodorizes by killing microorganisms [bacteria] that cause offensive odors.
- disinfects and deodorizes in one labor saving step.
- [help] take the hassle out of dispensing [disinfecting] [sanitizing] wipes. The Easy-Glide Lid dispenses wipes one-at-a-time, like a tissue-box, so you get the number of wipes you want with no pinched fingers, [torn wipes], [or] [jammed lids]. Plus they kill bacteria to keep your [family's] home [clean]. Use it on bathroom and kitchen surfaces like countertops, appliances, door handles, light switches, toilets, sinks, and tubs.
- help you accomplish things you never thought a wipe could do
- [improves labor results by] effectively controls [controlling] malodors.
- will [disinfect] [sanitize], clean and deodorize surfaces in rest rooms and toilet areas, behind and under sinks and counters, garbage cans and garbage storage areas, and other places where bacterial growth can cause malodors.
- is formulated for use in daily maintenance programs with a balance of detergents and malodor counteractants that deliver effective cleaning, [disinfecting] [sanitizing] and malodor control.
- is a complete, chemically balanced disinfectant
- will not leave grit or soap scum.
- is a [one-step] disinfectant<sup>14</sup> that is effective against a broad spectrum of bacteria when used as directed.
- is a proven "one-step" disinfectant<sup>14</sup> which is effective in the presence of 5% serum contamination.
- Kills bacteria
- Sanitizes and deodorizes in one labor saving step.
- Starts killing [bacteria] on contact
- [wipes] [cloths] [sheets] help you to accomplish things you never thought a wipe could do
- are designed for your toughest tasks. They are [thick and strong] [thicker and stronger] to stand up to [tough] [your toughest] messes, and they have a cloth-like texture for extra scrubbing power. Plus they kill bacteria to [help] keep your [family's] [home] [clean]. Try it [them] on [your] tough [toughest] messes in the kitchen and bathroom, like baked-on grease on your stove [top], sticky messes on your counters, and built-up grime on your bathroom sinks.

Cross-contamination is of major [housekeeping] concern. **Lonza Disinfectant Wipes** have been formulated to aid in the reduction of cross-contamination between treated surfaces in the home, schools, institutions and industry.

### **Use Lonza Disinfectant Wipes:**

- in federally inspected Meat & Poultry Plants as a disinfectant on all surfaces in inedible product processing areas, non-processing areas and / or exterior areas.
- as a [disinfectant] [sanitizer] on hard, nonporous surfaces.
- in kitchens, bathrooms and other household areas.
- to clean and [disinfect] [sanitize] finished floors, sinks and tubs.
- for non-scratch cleaning of showers and tubs, shower doors and curtains, fixtures and exterior toilet bowl surfaces.
- to clean and disinfect hard non-porous personal [safety] [protection] equipment, protective headgear, hard hats, half mask respirators, full face breathing apparatus, gas masks, goggles, spectacles, face shields, silicone rubber or PVC hearing protectors and vinyl covered ear muffs. Rinse all equipment that comes in contact with skin before reuse with clean warm water [about 120°F], and allow to air dry. [Caution: Cleaning at 120°F temperature will avoid overheating and distortion of the personal [safety] [protection] equipment that would necessitate replacement.
- to clean and [disinfect] [sanitize] hard non-porous surfaces of gym equipment, exercise machines, wrestling mats and gymnastic equipment.
- to clean and [disinfect] [sanitize] hard non-porous [safety] [protection] equipment, protective headgear, gym equipment, exercise machines, wrestling mats, gymnastic equipment and equipment tables.

[Insert Brand name] is registered in the United States and Trademark Office to [Insert Company Name].

*{Note to reviewer: Each entry below also represents a graphic depicting the corresponding area of use. The graphics will only represent individual objects or outsides or insides of buildings as described below. No people, animal, or food will be depicted in graphics.}*

**[AREAS OF USE:]**

Use **Lonza Disinfectant Wipes** in:

- |   |   |
|---|---|
| Bathrooms                                 | Hotels  |
| Children's room                           | Institutional facilities                          |
| Homes [households]                        | Institutions                                      |
| Kitchens                                  | Laundry rooms                                     |
| Living room                               | Locker rooms                                      |
|   | Motels  |
| Dental offices                            | Playrooms   |
| Hospitals                                 | Prisons   |
| Medical Offices                           | Public facilities                                 |
| Nursing homes                             | Public rest rooms                                 |
|   | Salons  |
| Day care centers                          | Schools   |
| Nurseries                                 | Shower and bath areas                             |
|   | Sick rooms  |
| Bars                                      |   |
| Cafeterias                                | Camp grounds                                      |
| Convenience stores                        | Play ground equipment                             |
| Food processing plants                    |   |
| Food storage areas                        | Airplanes   |
| Institutional kitchens                    | Airports  |
| Restaurants                               | Ambulances  |
| USDA inspected food processing facilities | Boats   |
|   | Buses   |
| Athletic facilities                       | Campers   |
| Barber shops                              | Cars  |
| Business and office buildings             | Emergency [Police] [EMS] [Fire] [Rescue] vehicles |
| Colleges                                  | Mobile homes                                      |
| Correctional facilities                   | Ships   |
| Dressing rooms                            | Taxis   |
| Exercise facilities                       | Trailers  |
| Factories                                 | Trains  |
| Family Rooms [Dens]                       | Transportation terminals                          |
| Health clubs                              |   |

Non Food Contact Sanitizing Use Areas: Homes, Schools, transportations, airplanes, trains, automobiles, office buildings, dairies, meat processing plants, food processing areas, food handling areas, bars, restaurants, healthclubs, gyms, grocery stores, weight rooms, exercise rooms.

{Note to reviewer: Each entry below also represents a graphic depicting the corresponding type of surface. No people, animal, or food will be depicted in graphics. Only exteriors of microwaves and refrigerators will be depicted. Toy graphics will be submitted to Agency for review.}

**[TYPES OF SURFACES:]**

Use **Lonza Disinfectant Wipes** on [washable] hard, nonporous surfaces of: {or}

Use [**Lonza Disinfectant Wipes**] on hard nonporous surfaces including: {or}

[This product] will clean and disinfect washable hard, nonporous surfaces of:

- |   |   |
|---|---|
| Athletic Equipment  | Sealed floors   |
| Appliances - exteriors  | Seats   |
| Audio equipment   | Showers   |
| Bathroom fixtures   | Shopping cart handles                                 |
| Bathtubs [Fiberglass]   | Shower [stalls] [walls]                               |
| Cabinets  | Sinks [bathroom, kitchen]                             |
| Cages   | Storage areas   |
| Car seat[s]   | Stoves <sup>16</sup> [stovetops <sup>16</sup> ]       |
| Chairs  | Tables, [picnic tables]                               |
| Computer keyboards  | Terrazzo [Flooring]                                   |
| Counters [countertops] [Bathroom] [Kitchen]                             | Tanning Beds  |
| Cup holders   | Telephones  |
| Cupboards   | Exterior Toilet bowl surfaces                         |
| Desks   | Toilet seats  |
| Diaper changing [tables][counters]                                      | Toys <sup>6</sup>                                     |
| Diaper pails  | Tub walls   |
| Door handles  | Tubs  |
| Doors   | Tiles, glazed   |
| Doorknobs   | Walls   |
| Equipment tables  | Vinyl [Flooring]                                      |
| Faucets   |   |
| Faucet Handles  | Non-critical medical device surfaces:                 |
| Floors [Bathroom] [Kitchen]   | Beds [Medical] [Hospital]                             |
| Finished floors   | Bed frames  |
| Garbage cans  | Bed rails   |
| Glass   | Crutches  |
| Hardwood [Flooring]   | Defibrillators  |
| Highchairs  | Gurneys   |
| Lab benches   | Non-critical [hospital] [medical] equipment surfaces: |
| Linoleum  | [Medical] Examining tables                            |
| Light switches  | [Medical] [Hospital] Lamps                            |
| Laminate flooring   | [Medical] [Hospital] Scales                           |
| Microwave ovens - exteriors   | Rescue tools  |
| Non-Wooden Outdoor [patio] furniture except cushions<br>and wood frames | Resuscitators   |
| Painted surfaces  | Stands  |
| Parquet [Flooring]  | Stretchers  |
| Refrigerators - exteriors   | Stethoscopes  |
| Refrigerated storage and display equipment <sup>16</sup>                | Walkers   |
|   | Wheel chairs  |
|   | Ultra-sound transducers and equipment                 |

Other hard nonporous surfaces made of:

Acrylic

Carbon fiber

Fiberglass

Finished woodwork

Formica®

Glass

Glazed ceramic

Glazed enameled surfaces

Glazed porcelain

*Formica® is a registered trademark of the Diller Corporation*

Metal

Plastic (such as polystyrene or polypropylene)

Sealed granite

Sealed marble

Sealed quartz

Sealed stone

Stainless steel

Upholstery- vinyl and plastic

For plastic and painted surfaces, spot test on an inconspicuous area before use.

[This product or product name] will not harm most surfaces: including acrylic, sealed fiberglass and vinyl.

*{Note to reviewer: Below claims will only be used when Disinfectant directions are included on final label}*

**Lonza Disinfectant Wipes** are a one-step disinfectant<sup>14,15</sup> and Bactericidal tested according to the current AOAC Use-Dilution Test Method modified in the presence of 5% organic serum against:

*{or}*

**Lonza Disinfectant Wipes** are effective against [Kills] [Removes] [Destroys]:

[Bacteria]

Staphylococcus aureus [Staph]

Salmonella enterica [Salmonella]

Pseudomonas aeruginosa [Pseudomonas]

Campylobacter jejuni [Campylobacter]

Acinetobacter baumannii

Burkholderia cepacia

Campylobacter jejuni

Corynebacterium ammoniagenes

Enterobacter aerogenes

Enterococcus faecalis [Enterococcus]

Enterococcus faecalis- Vancomycin Resistant [VRE]

Escherichia coli [E. coli]

ESBL Escherichia coli – [Extended spectrum beta-lactamase producing E. coli]

Klebsiella pneumoniae [Klebsiella]

Legionella pneumophila

Listeria monocytogenes

Salmonella schottmuelleri [Salmonella]

Salmonella typhi [Salmonella]

Serratia marcescens [Serratia]

Shigella dysenteriae [Shigella]

Staphylococcus aureus - Community Associated Methicillin-Resistant [CA-MRSA] [NRS384] [USA300]

Staphylococcus aureus - Community Associated Methicillin-Resistant [CA-MRSA] [NRS123] [USA400]

Staphylococcus aureus - Methicillin-Resistant [MRSA]

Staphylococcus aureus - Multi-Drug Resistant

Staphylococcus aureus-Vancomycin Intermediate Resistant – [VISA]

Streptococcus pyogenes [Strep] [a cause of scarlet fever]

Vibrio cholerae

[Viruses:]

\*Hepatitis B Virus [HBV]

\*Hepatitis C Virus [HCV]

\*Herpes Simplex Virus Type 1

\*Herpes Simplex Virus Type 2

\*HIV-1 [AIDS Virus]

\*Human Coronavirus

\*Influenza Type A Virus / Brazil [Influenza] [[the] Flu [Virus]]

\*Respiratory Syncytial Virus [RSV]

\*Rotavirus [Diarrhea-causing virus]

\*SARS Associated Coronavirus [SARS] [cause of Severe Acute Respiratory Syndrome]

\*SARS-Related Coronavirus 2 [SARS-CoV-2] [cause of COVID-19]

\*Vaccinia Virus

{Continued from previous page}

[Animal Viruses:]

- Avian Influenza A [virus] (H3N2)
- Avian Influenza A [virus] (H5N1)
- Avian Infectious Bronchitis Virus
- Canine Distemper Virus
- Newcastle's Disease Virus
- Pseudorabies Virus

{Note to reviewer: Below claims will only be used when Sanitizing directions are included on final label}  
**Lonza Disinfectant Wipes** are [99.9%] effective against [Kills] [Removes] [Destroys]:

[Bacteria]

- Staphylococcus aureus [Staph]
- Klebsiella pneumoniae [Klebsiella]
- Campylobacter jejuni

{Note to Reviewer: These statements for claims against enveloped and large, non-enveloped viruses, shall not appear on marketed (final print) product labels.}  
**EMERGING VIRAL PATHOGENS**

This product qualifies for emerging viral pathogen claims per the EPA's 'Guidance to Registrants: Process for Making Claims Against Emerging Viral Pathogens not on EPA-Registered Disinfectant Labels' when used in accordance with the appropriate use directions indicated below.

This product meets the criteria to make claims against certain emerging viral pathogens from the following viral category[ies]:

-Enveloped Viruses

For an emerging viral pathogen that is a/an...	...follow the directions for use for the following organisms on the label:
Enveloped virus	Rotavirus

**[Lonza Disinfectant Wipes]** has demonstrated effectiveness against viruses similar to **[name of emerging virus]** on **hard, non-porous surfaces**. Therefore, **[Lonza Disinfectant Wipes]** can be used against **[name of emerging virus]** when used in accordance with the directions for use against **Rotavirus** on **hard, non-porous surfaces**. Refer to the **[CDC or OIE]** website at **[pathogen-specific website address]** for additional information.

OR

**[Name of illness/outbreak]** is caused by **[name of emerging virus]**. **[Lonza Disinfectant Wipes]** kills similar viruses and therefore can be used against **[name of emerging virus]** when used in accordance with the directions for use against **Rotavirus** on **hard, non-porous surfaces**. Refer to the **[CDC or OIE]** website at **[website address]** for additional information."

*{For canister}*

**To Open Package:**

Remove cover. Pull up [towelette] [wipe] [cloth] corner from center of roll. Thread through hole in the cover. Replace cover. Open center cap on cover to remove wipe. When not in use [When not using], close center cap [securely] to prevent moisture loss.

or *{For carton or tub}*

**To Open Package:** Open cover and slowly peel back label on pouch. Remove [Pull out] [wipe] [towelette] [cloth] as needed. To retain moisture, reseal [pouch] [bag] by firmly pressing seal back on the [pouch] [bag] and close [carton or tub] cover.

*{For Tub Without Pouch}*

**To Open Package:** Open cover and slowly peel back label. [Remove] [Pull out] [wipe] [towelette] [cloth] as needed. To retain moisture, reseal by firmly pressing and close [tub] cover.

or *{For refill, pouch or bag:}*

**To Open Package:**

[Slowly] peel back the label [open seal]. Remove [Pull out] [wipe] [towelette] [cloth] as needed. To retain moisture, reseal [pouch] [bag] by firmly pressing seal back on the [pouch] [bag].

or *{for the Travel Pack size:}*

**To Open Package:** [Open cover and] slowly peel back label. [Pull out] [Remove] [wipe(s)] [towelette(s)] [cloth(s)] as needed. [Reseal label] to retain moisture [close cover].

or **To Open Package:** Open ziplock [Tear edge of pack]. [Pull out] [Remove] [wipes] [towelettes] [cloths] as needed. Reseal ziplock to retain moisture.

or *{for the single cloth or sample pack:}*

**To Open Package:** Tear [pouch] open [at top edge of pouch] [at tear notch] [along dotted line] [where indicated] [edge of pack]. [Pull out] [Remove] [Wipe] [Towelette] [Cloth].

*{For product supplied in a single use pouch with a folded towellete, include the following:}*

Unfold [Wipe] [Towelette] [Cloth]

or

**To Open Package:** [Remove package seal(s)] [Remove safety seal(s)] [Flip] Open lid. To remove first wipe [sheet] [wet cloth] cloth pull up on wipe and remove wipe through [dispensing] opening [wavy dispensing opening] [orifice]. [The next wipe will pop up automatically]. [Always] close [snap] lid securely between uses [to retain moisture].

or

**To Open Package:** [Remove package seal(s)] [Remove safety seal(s)]. Open [Flip open lid [package]]. To start [remove] [first] wipe [sheet] [wet cloth] take the edge of wipe from large opening to the small dispensing opening and pull up. [The next wipe [sheet] [wet cloth] [cloth] will pop up automatically.] [Always] close [snap] lid securely between uses [to retain moisture].

or

**To Open Package:** Open Lid. To start wipes, pull up on wipe and move wipe into the small dispensing opening [orifice] [aperture] [hole] [wave] and [pull sheet up to remove wipe] remove wipe. [The next wipe [sheet] [wet cloth] will pop up automatically]. [Always] close [snap] lid securely between uses [to retain moisture].

*or*

**To Open Package:** Flip open[up] the lid[cover][top][cap][dispensing lid]. Thread the wipe [first wipe][cloth][first cloth][sheet] through the dispensing lid and pull up to remove wipe from package. The next wipe [sheet][cloth] pops up automatically. Close lid securely between uses to retain moisture[prevent moisture loss].

*or*

**To Open Package:** Press the three [3] ridges with your thumb and push up on the cap[top][lid] to open[lid]. To remove wipe [sheet] [wet cloth] [cloth] [towelette] pull up on wipe and remove wipe through [dispensing] opening [wavy dispensing opening] [orifice]. [The next wipe will pop up automatically].

*or*

**To Open Package:** Press the three [3] ridges with your thumb and push up on the cap[top][lid] to open[lid]. Thread the wipe [sheet] [wet cloth] [cloth] [towelette] through the dispensing lid and pull up to remove wipe from package. The next wipe will pop[pull] up automatically. [Always] Close [snap] lid securely between uses [to retain moisture].

*or*

**To Open Package:** Press the three [3] ridges with your thumb and push up on the lid to open. Thread the wipe through the dispensing lid and pull up to remove wipe from package. The next wipe will pop up automatically. Close lid securely between uses to retain moisture.

*or*

**To Open Package:** Push the area marked ["Press"] ["Push"] ["Press Here"] ["Push Here"] with your thumb and push up on the lid to open. Thread the wipe through the dispensing lid and pull up to remove wipe from package. The next wipe will pop up automatically. Close lid securely between uses to retain moisture.



*{If the following Spanish statement is used, it must appear directly above DIRECTIONS FOR USE.}  
Si usted no entiende la etiqueta, busque a alguien para que se la explique a usted en detalle. [If you do not understand the label, find someone to explain it to you in detail.]*

#### **DIRECTIONS FOR USE:**

It is a violation of Federal law to use this product in a manner inconsistent with its labeling.

#### **TO CLEAN AND DEODORIZE:**

Wipe surface with [wipe] [towellete] [cloth] [sheet]. Let air dry. Discard used [wipe] [towellete] [cloth] [sheet] in trash. Do not flush [in toilet].

#### **[TO] CLEAN [CLEANING] AND DISINFECT [DISINFECTION / VIRUCIDAL\*]:**

Wipe hard, nonporous surface with [wipe] [towellete] [cloth] [sheet] until surface is visibly wet. [Use enough wipes to visibly wet surfaces.] [Use [enough] [extra] wipes to keep surfaces visibly wet for 10 minutes.] [Keep surfaces visibly wet for 10 minutes.] [Wipe surface and let it remain visibly wet for 10 minutes.] Allow surface to remain visibly wet for 10 minutes. *{Note to reviewer: if using claims for SARS-CoV-2, the following sentence may be used:}* **[For SARS-CoV-2, treated surfaces must remain visibly wet for 4 minutes.]** [Let air dry.] [[Let] Permit surface to [air] dry.]

If surfaces are visibly dirty or soiled, clean first with another [wipe] [towellete] [cloth] [sheet] before disinfecting. Discard used [wipe] [towellete] [cloth] [sheet] in trash. Do not flush [in toilet].

Rinse food contact surfaces with clean, potable water after disinfecting. Do not use to disinfect dishes, glassware or utensils.

Do not use as a diaper wipe or for personal cleansing.

[Spot test on an inconspicuous area before use.]

**For bacteriostatic use: Lonza Disinfectant Wipes Plus** will effectively inhibit the growth of odor-causing bacteria when applied to hard, nonporous surfaces. Preclean. Wipe surface and let it remain visibly wet for 4 minutes. Repeat treatment every [24 hours] [48 hours] [72 hours], or more often if new growth appears.

**\*KILLS HIV AND HBV AND HCV ON PRE-CLEANED ENVIRONMENTAL SURFACES / OBJECTS PREVIOUSLY SOILED WITH BLOOD / BODY FLUIDS** in health care settings or other settings in which there is an expected likelihood of soiling of inanimate surfaces / objects with blood or body fluids, and in which the surfaces / objects likely to be soiled with blood or body fluids can be associated with the potential for transmission of Human Immunodeficiency Virus Type 1 [HIV-1] [associated with AIDS] or Hepatitis B Virus [HBV] or Hepatitis C Virus [HCV].

#### **Special Instructions for Cleaning and Decontamination against HIV-1 or HBV or HCV on Surfaces / Objects Soiled With Blood / Body Fluids.**

**Personal protection:** Clean-up must always be done wearing protective gloves, gowns, masks and eye protection.

**Cleaning procedure:** Blood and other body fluids containing HIV or HBV or HCV must be thoroughly cleaned from surfaces and objects before application of Lonza Disinfectant Wipes. Lonza Disinfectant Wipes [this product] [wipe] [towellete] [cloth] [sheet] can be used for this purpose.

**Contact time:** Leave surface visibly wet for 1 minute [60 seconds] for HIV-1 and 10 minutes for HBV and HCV. Use a 10-minute contact time for disinfection against all other viruses and bacteria claimed.

**Disposal of infectious material:** Blood, body fluids, cleaning materials and clothing must be autoclaved and disposed of according to local regulations for infectious waste disposal.

*{Note to reviewer: If Avian Influenza A is listed on the label the following statement is required.}*

This product is for use on hard nonporous surfaces not conducive to treatment by immersion or excess liquid against Avian Influenza A.

### **SANITIZING [DEODORIZING]:**

To sanitize [deodorize] hard, non-porous, non-food contact surfaces; wipe surface, using enough [wipes] [towelettes] [cloths] to allow treated surface to remain visibly wet for 15 seconds for *Staphylococcus aureus* [Staph] (ATCC 6538), *Klebsiella pneumoniae* (ATCC 4352), and *Campylobacter jejuni* (ATCC 29428). Let surface dry. For highly soiled surfaces, clean excess dirt first.

### **DIRECTIONS FOR FLOOR WIPE USE:**

It is a violation of Federal Law to use this product in a manner inconsistent with its labeling.

**TO CLEAN AND DEODORIZE:** Wipe surface<sup>10</sup> with wipe. Let air dry. Discard used wipe in trash. Do not flush [in toilet].

### **TO CLEAN AND DISINFECT [DISINFECTION / VIRUCIDAL\*]**

Pre-clean floor in normal manner. [Attach a premoistened wipe to the mop head using the [Velcro] [fasteners] provided.] Visibly wet floor with wipes. [Change wipe when soiled.] {or} [Replace with a fresh wipe once visibly soiled or no longer visibly wetting the surface.] Allow surface to remain visibly wet for 10 minutes. Let air dry. On average, one wipe will clean [10] [x] square feet of floor. For a larger area you may need to use more than one wipe. Discard used wipe in trash. Do not flush. Rinse food contact surfaces with clean, potable water after disinfecting. Do not use to disinfect dishes, glassware or utensils. Do not use as a diaper wipe or for personal cleansing. Contact manufacturer of wood floors prior to use.

[Spot test on an inconspicuous area before use.]

Keep [container] [pouch] flat and [lid] securely closed to keep cloths moist.

*{Optional representative graphic}*



#### **TO OPEN:**

1. Cut off top of pouch with scissors.
2. Remove wipes from pouch.
3. Place wipes in plastic tub.
4. Discard empty pouch into trash.

#### **TO USE WITH MOP:**

1. Unfold top wipe in tub by pulling sides of the cloth over edges of tub.
2. Place sweeper on head.
3. Wrap wipe around head of sweeper.
4. Push edges of wipe into top of sweeper head.
5. Begin wiping. No rinsing required.
6. After use, remove soiled wipe and discard in trash. Do not flush.

---

<sup>1</sup> Includes weight of absorbent wipe.

<sup>2</sup> For qualified claims insert some pathogens from pages 19-20.

**Note to reviewer:** *If a supplemental label is using the “Germs” claim, per the EPA Guidance on use of the term “Germs” in order to make a qualified “germ” claim the supplemental label must be a broad spectrum disinfectant and list additional claims against: Viruses and must bear disinfectant directions. The front panel of the label for a qualified claim must contain a designator (such as \*\*) that refers the user to the qualified statements that describes the type of germ the product is efficacious against.*

<sup>3</sup> Do not use on unfinished oiled or waxed wooden boards, non-sealed tiles or carpeted floors because they may be water sensitive

<sup>4</sup> Swiffer® is a registered trademark of the Procter & Gamble Company.

<sup>5</sup> Pledge Grab-It® is a registered trademark of S. C. Johnson & Son, Inc.

<sup>6</sup> Rinse toys with clean, potable water after disinfecting.

<sup>7</sup> cushionyThick® is a registered trademark of U.S. Non-Wovens Corporation

<sup>8</sup> We work hard so you don't have to!® is a registered trademark of S. C. Johnson & Son, Inc.

<sup>9</sup> Lysol is a registered trademark of Reckitt Benckiser Inc.

<sup>10</sup> On hard, non-porous, non-food surfaces

<sup>11</sup> All rights reserved. Brawny®, Brawny® Man Image and the Georgia-Pacific Logo are trademarks owned by or licensed to Georgia-Pacific Consumer Products LP.

<sup>12</sup> 8"x7" disinfecting wipes

<sup>13</sup> SARS-CoV-2

<sup>14</sup> When used according to the disinfection directions

<sup>15</sup> When used according to the sanitization directions

<sup>16</sup> Allow the surface to adjust to room temperature before disinfection

{PACKET LABEL TO BE USED WITH MASTER CONTAINER LABEL}

## LONZA DISINFECTANT WIPES

Active Ingredients:

Octyl decyl dimethyl ammonium chloride.....	0.069%
Dioctyl dimethyl ammonium chloride.....	0.028%
Didecyl dimethyl ammonium chloride.....	0.042%
Alkyl (C <sub>14</sub> , 50%; C <sub>12</sub> , 40%; C <sub>16</sub> , 10%) dimethyl benzyl ammonium chloride .....	0.093%
Other Ingredients:.....	99.768%
Total.....	100.000% <sup>1</sup>

<sup>1</sup> Includes weight of absorbent wipe.

### KEEP OUT OF REACH OF CHILDREN

## CAUTION [PRECAUCIÓN]

See outer container for Precautionary Statements and Use directions

DISPOSAL: Dispose [wipe] [towelette] [Cloth] in trash after use. Discard empty [pouch] [packet] in trash.

EPA Reg. No. 6836-313

EPA Est. No. *(insert EPA Est. No. here)*

Net Contents: *(expressed as avoirdupois pounds and ounces)*

*[optional - wipe dimensions:]* X x X [inches] [in.]

Lonza, LLC

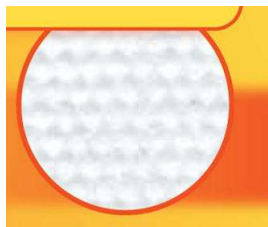
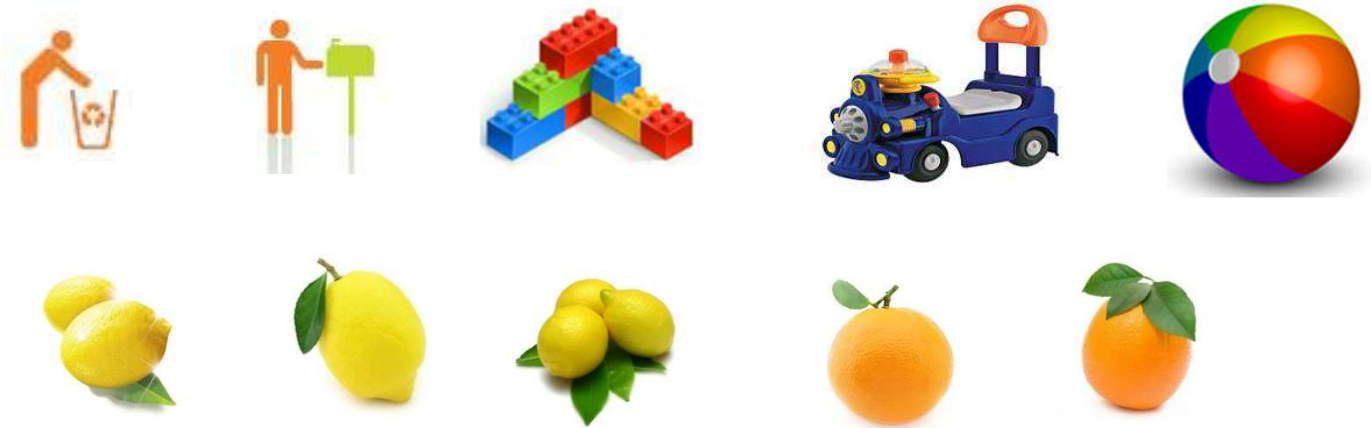
412 Mount Kemble Avenue

Suite 200S

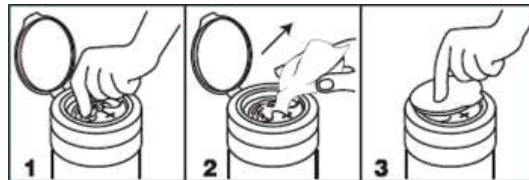
Morristown, NJ 07960

{Optional graphics}

{Note to reviewer: The following are optional generic graphics. Please refer to Note 6 on page 25 regarding toys. Any final printed label containing an EPA-approved toy graphic will be required to include the text of footnote 6 about rinsing.}



{Note to reviewer: the graphic to the left denotes a picture of a substrate. It will only be added to the final printed label if this substrate is actually in the canister can.}



Note to reviewer: Representative graphic of wipe tub and/or hand pulling out wipe fabric may be added to the final printed label.

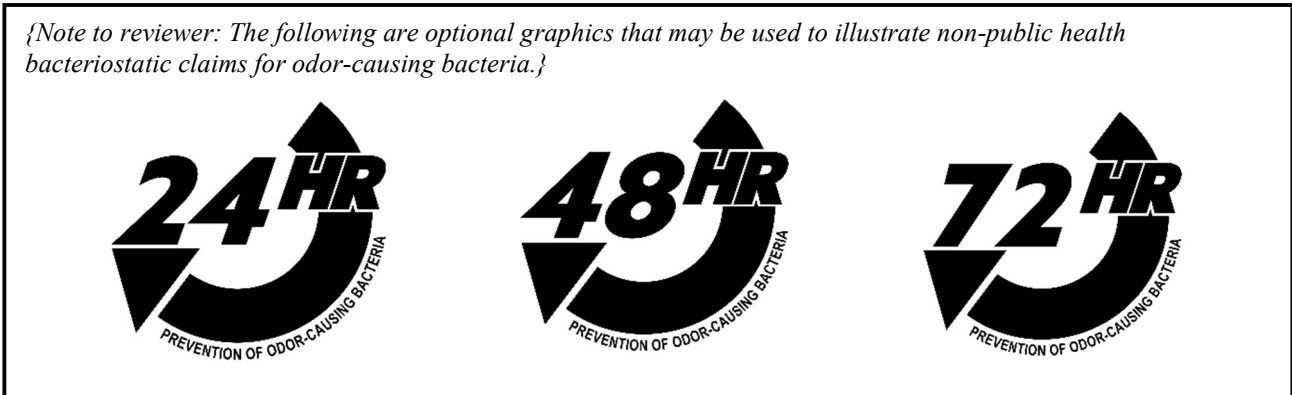
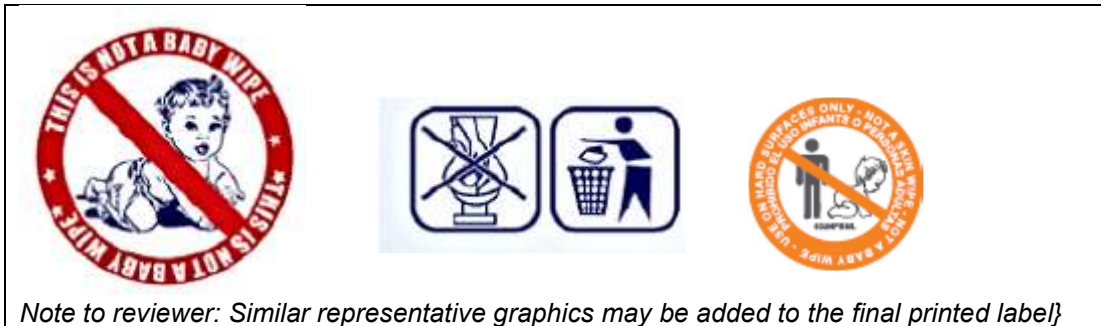
Note to reviewer: A representative graphic of a substrate may be added to the label. Only a graphic of the substrate actually in the canister can be added to the final printed label.

{Optional graphics}



**TO OPEN PACKAGE:**

- Flip open dispensing cap and remove entire lid from canister by lifting upward.
- Locate wipe at center of roll, twist corner to a point and thread through small opening in lid. **DO NOT PUSH FINGER THROUGH OPENING.**
- Replace lid and pull sheet up at an angle. Remaining wipes feed automatically.
- When finished, snap lid cap shut to retain moisture.



**THE FOLLOWING SECTIONS CONTAIN PROPRIETARY  
LANGUAGE AND GRAPHICS.**

**THESE SECTIONS ARE ONLY AVAILABLE FOR  
SUPPLEMENTAL REGISTRANTS APPROVED FOR ITS USE.**

{Note to reviewer: The following are optional proprietary graphics}  
{Section 1}



**Press & Go**

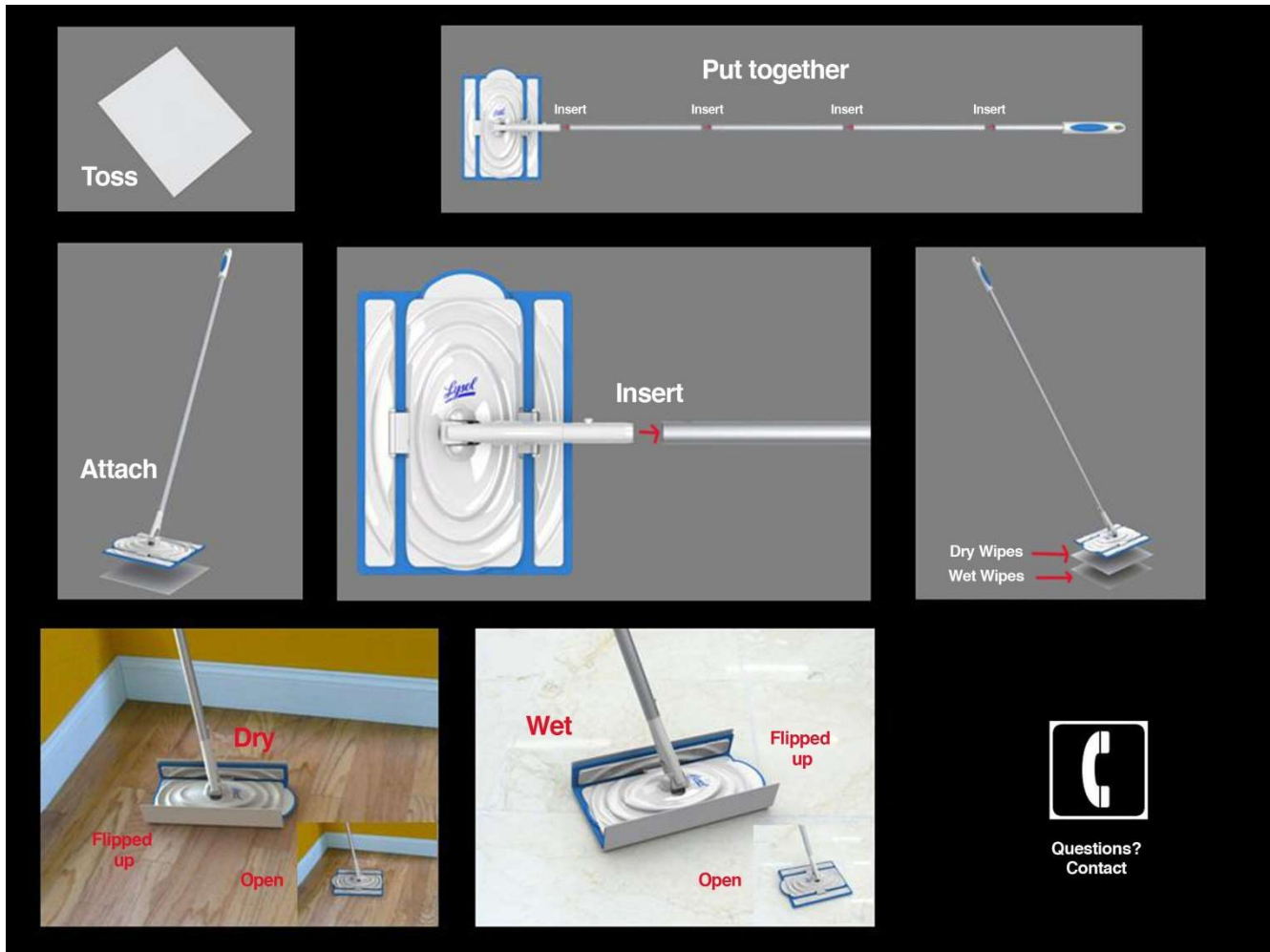


**Wrap & Go**

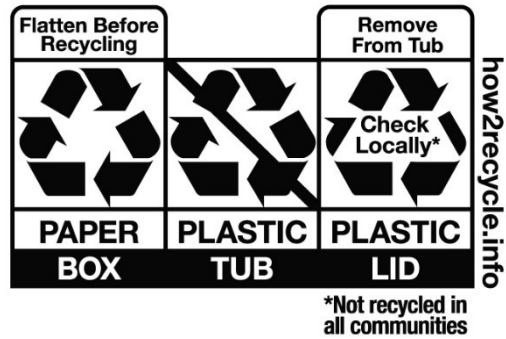
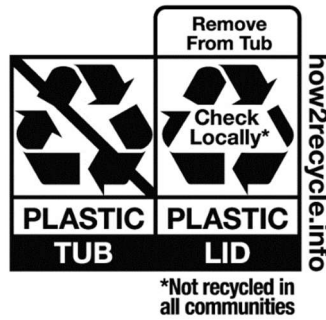




{Note to reviewer: The following are optional proprietary graphics}  
{Section 2}



{Note to reviewer: The following are considered optional proprietary graphics.}  
{Section 3}




{Note to reviewer: The following is an optional graphic that will be used to illustrate the scent.}



*{Note to reviewer: The following are considered optional proprietary graphics.}*  
**{Section 4}**



*{Note to reviewer: The following are considered optional proprietary graphics.}*  
**{Section 5}**

	<p><b>We Promise</b> to make good products at good prices for good people. Enjoy!</p>
	<p><b>Thank You</b> Target gives 5% of its income to the community to support education, the arts, social services and volunteerism.</p>



{Note to reviewer: The following are considered optional proprietary graphics.}  
{Section 6}



*{Note to reviewer: The following are optional, proprietary claims}*

**{Section 7}**

**ANTIBACTERIAL CLAIMS:**

- Each pre-moistened wipe kills 99.9% of germs<sup>2</sup> including the Flu Virus\*, while cleaning [your] [dash], [steering wheel], [vinyl], [glass] [and more] to a virtually streak free finish. <sup>10,14</sup>

**SURFACE SAFETY CLAIMS:**

- Won't dry out, damage or fade automotive surfaces.

**PACKAGING CLAIMS:**

- Fits conveniently in your glove box or drink holder

**OTHER CLAIMS:**

- The interior of your vehicle is not only susceptible to dirt and dust, but can also harbor germs<sup>2</sup>, especially during Flu season.
- [Tips & Tricks:] Keep a canister in your car for clean-up on the go.

*{Note to reviewer: Each entry below also represents a graphic depicting the corresponding type of surface. No people, animal, or food will be depicted in graphics. Only exteriors of microwaves and refrigerators will be depicted. Toy graphics will be submitted to Agency for review.}*

**[TYPES OF SURFACES:]**

Use **Lonza Disinfectant Wipes** on [washable] hard, nonporous surfaces of: {or}

Use [**Lonza Disinfectant Wipes**] on hard, nonporous surfaces including: {or}

[This product] will clean and disinfect washable hard, nonporous surfaces of:

Car console	Rear view mirrors
Center console	Seat belt buckle
Gear shift	Side view mirrors
GPS navigation device	Steering wheel
Interior dashboard	Stick shift
Instrument panel and gauges	Switch gear
Navigation screen	Turn signal
Radio knob	Window [opener]

To open package:

1. Open lid and pull out wipe from center of roll
2. The next sheet pops up automatically
3. When finished, close lid to retain moisture

or

To open package:

1. Open lid, pull out wipe from center of roll and slide through slot.
2. Pull wipe up and slightly to the side.
3. The next sheet pops up automatically.
4. When finished, close lid to retain moisture.

*{Note to reviewer: The following are optional, proprietary claims}*  
**{Section 8}**

- Brawny® strong<sup>11</sup>

{Note to reviewer: The following are considered optional proprietary graphics.}  
{Section 9}

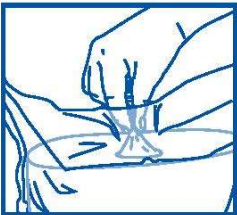
To Open Package



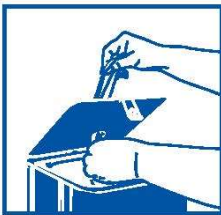
Open dispenser  
and top of bag.



Pull out the first wipe  
approximately 6 to 8  
inches from the  
center of the roll.



Place the entire  
bag inside of  
dispenser.



Thread the wipe through the opening on the  
dispenser lid.  
Close the lid to retain moisture.

- OR -





*{Note to reviewer: The following are considered optional proprietary graphics.}*  
**{Section 10}**



{Note to reviewer: The following are considered optional proprietary graphics.}  
{Section 11}



\*NOT RECYCLED  
IN ALL AREAS



- ✓ item replaced
- ✓ money refunded

*{Note to reviewer: The following are considered optional proprietary graphics.}*  
**{Section 12}**

