



UNITED STATES ENVIRONMENTAL PROTECTION AGENCY  
WASHINGTON, DC 20460

OFFICE OF CHEMICAL SAFETY  
AND POLLUTION PREVENTION

February 11, 2016

Jonathan Walsh  
Senior Regulatory Compliance Specialist  
Lonza Inc.  
90 Boroline Road  
Allendale, NJ 07401

Subject: Notification per PRN 98-10 – To update label language  
Product Name: Lonza Disinfectant Wipes  
EPA Registration Number: 6836-313  
Application Date: September 28, 2015  
Decision Number: 510070

Dear Mr. Walsh:

The Agency is in receipt of your Application for Pesticide Notification under Pesticide Registration Notice (PRN) 98-10 for the above referenced product. The Antimicrobials Division (AD) has conducted a review of this request for its applicability under PRN 98-10 and finds that the action requested falls within the scope of PRN 98-10.

The label submitted with the application has been stamped “Notification” and will be placed in our records.

Should you wish to add/retain a reference to the company’s website on your label, then please be aware that the website becomes labeling under the Federal Insecticide Fungicide and Rodenticide Act and is subject to review by the Agency. If the website is false or misleading, the product would be misbranded and unlawful to sell or distribute under FIFRA section 12(a)(1)(E). 40 CFR 156.10(a)(5) list examples of statements EPA may consider false or misleading. In addition, regardless of whether a website is referenced on your product’s label, claims made on the website may not substantially differ from those claims approved through the registration process. Therefore, should the Agency find or if it is brought to our attention that a website contains false or misleading statements or claims substantially differing from the EPA approved registration, the website will be referred to the EPA’s Office of Enforcement and Compliance.

If you have any questions, you may contact Eric Miederhoff by phone at 703 347 8028, or via email at [Miederhoff.eric@epa.gov](mailto:Miederhoff.eric@epa.gov)

Sincerely,

A handwritten signature in blue ink that reads "E. Miederhoff".

Eric Miederhoff  
Product Manager 31  
Regulatory Management Branch I  
Antimicrobials Division (7510P)  
Office of Pesticide Programs

Note to reviewer:

[Items in brackets [AAA] are optional and may/may not be included on final label]

{Items in braces {AAA} are for information purposes and will not appear on final label}

## LONZA DISINFECTANT WIPES

[One Step Cleaner / Disinfectant / Deodorizer / Sanitizer]

{Note to reviewer: each scent below may also be represented by a graphic depicting the corresponding scent with the exception of apple which will be submitted to the Agency for review.}

[ULTRA FRESH] / [FRESH / [SUMMER] CITRUS/ FLORAL/ MINT/ PINE / LEMON / WOODY / LIME / MELON/  
CLEAN / WATERFALL / [ULTIMATE] ORANGE / [SPARKLING] APPLE / INVIGORATING BREEZE / SPRING  
GARDEN / LAVENDER [FRESH] / GRAPEFRUIT]  
[FRAGRANCE / SCENT / SCENTED]

Active Ingredients:

Octyl decyl dimethyl ammonium chloride.....	0.069%
Dioctyl dimethyl ammonium chloride.....	0.028%
Didecyl dimethyl ammonium chloride.....	0.042%
Alkyl (C <sub>14</sub> , 50%; C <sub>12</sub> , 40%; C <sub>16</sub> , 10%) dimethyl benzyl ammonium chloride .....	0.093%
Other Ingredients:.....	99.768%
Total.....	<sup>1</sup> 100.000%

<sup>1</sup> Includes weight of absorbent wipe.

**KEEP OUT OF REACH OF CHILDREN**

**CAUTION [PRECAUCIÓN]**

See [left] [side] [right] [back] [bottom] panel for Precautionary Statements and First Aid

Manufactured by:

Lonza Inc.

90 Boroline Road

Allendale, NJ 07401

EPA Reg. No. 6836-313

EPA Est. No. (as indicated on container)

Net Contents: insert # [premoistened] [towelettes] [wipes] [cloths] [disinfecting] [sanitizing] [antibacterial]  
[cleaning] [wet] [multi-purpose] [touch-up] [pre-moistened cloths] [sheets]

Net Contents: (expressed as avoirdupois pounds and ounces)

Minimum Wt.

[optional: wipe dimensions:] X x X [inches] [in.]

[Barcode]

Made in [insert country of production]

{Note to Reviewer: for multi-packs}

[2-pack]

[3-pack]

[QR Code]

### NOTIFICATION

6836-313

The applicant has certified that no changes, other than those reported to the Agency have been made to the labeling. The Agency acknowledges this notification by letter dated:

02/11/2016

Lonza Disinfectant Wipes

EPA Reg. No. 6836-313

EPA Stamped Label 2015-07-07with Notif 2015-09-28

## **PRECAUTIONARY STATEMENTS**

### **HAZARDS TO HUMANS AND DOMESTIC ANIMALS**

Caution. Causes moderate eye irritation. Avoid contact with eyes or clothing. Wash thoroughly with soap and water after handling and before eating, drinking, chewing gum, using tobacco or using the toilet.

### **FIRST AID**

**If in eyes:** Hold eye open and rinse slowly and gently with water for 15-20 minutes. Remove contact lenses, if present, after first 5 minutes, then continue rinsing eye.

Call a poison control center or doctor for treatment advice. Have the product container or label with you when calling poison control center or doctor or going for treatment.

*{Optional Emergency contact information}*

*[For emergency information on [product, usage, etc.], call (1-XXX-XXX-XXXX), Monday through Friday, 9 a.m. to 5 p.m. After 5 p.m. call your poison control center at 1-800-222-1222.]*

*{Note to reviewer: Nonrefillable container}*

### **STORAGE AND DISPOSAL**

Store in original container in areas inaccessible to children. Keep securely closed. Nonrefillable container. Do not reuse or refill this container. Discard empty container in trash or recycle (if available).

*{Note to reviewer: Refillable container}*

### **STORAGE AND DISPOSAL**

Store in original container in areas inaccessible to children. Keep securely closed. Refillable container. [Reuse] [Refill] empty container only with Lonza Disinfectant Wipes [refills]. Do not reuse this container except as described. If not refilling, discard empty container in trash or recycle (if available).

{Note to reviewer: Pages 3-21 are considered optional marketing language. All designators (i.e. asterisks and numbers) used throughout the label may be interchanged as needed on final printed label.}

{ Note to reviewer: The following claims containing “New” or “Improved” may only be used for a period of six months after a supplemental registrant obtains a new distributor registration or uses a revised or alternate formula, beginning when the supplemental product is first sold or distributed.}

- 2 New Wipes
- Introducing
- Introducing new
- New[!]
- New [Convenient] [Amazing] Package
- New [Disinfecting] [Sanitizing] [Wipes] [cloths]
- New Dual Action [Wipes] [Cloths] [!]
- New easy to dispense
- New easy-glide dispensing top
- New Easy [Start Lid] [Start Package] [Grab Lid]
- New EZ [to start lid] [start package] [Grab Lid]
- New larger [bigger]-sized [wipe] [cloth]
- New Larger Size
- New [thick] [textured] [wipe] [cloth]
- New Top
- New tougher [wipe] [cloth] for tougher cleaning
- New tougher [wipe] [cloth] for your tough[er] jobs
- New [Wipes] [cloths]
- [New] [Now] [less-residue] [low-residue] [low-streak] formula

#### **CLEANING CLAIMS:**

- [25%] [30%] [50%] more grease cleaning power
- [A] Clean you can trust
- [All] [Multi-purpose] kitchen [everyday] [daily] [touch-up] [cleaning]
- Baked-on messes
- Clean more with less
- Clean surfaces at your fingertips.
- Clean[s] to a virtually streak-free shine
- Clean with just a wipe or a touch up
- Cleaning
- Cleaning just got a whole lot easier
- Cleans
- Cleans [away] [up] dirt, dust and hair
- Cleans [grease] better than ever
- Cleans faster because the [scrubbies] [texture] removes [stubborn] [stuck on] [dirt] [messes]
- Cleans more than ever
- Cleans things you never thought a [wipe] [cloth] could
- Cleans to a [Sparkle] [Shine]
- Cleans [tough messes] [tough grease] [baked on grease] [sticky messes]
- Cleans what you can't see
- Convenience of a wipe [a cloth]
- Convenient
- Cuts through [tough] [dirt] [stains] [grime] [soils] [dried on stains] [dried on soils]
- Cuts Through [Tough] [Messes] [Grease] [Grime]
- Deep Clean
- [Dissolve[s] ] [Cleans] [Removes] [Eliminates] dirt and soils
- Dual Action [Wipes] [Cloths]
- Dual Action Deep Clean
- [Everyday] [Regular] [Cleaning] Wipes

**CLEANING CLAIMS (Cont.):**

- [Everyday] [Regular] Cleaning
- [Everyday] [Regular] Wiping
- Extra Power for your tough cleaning jobs
- Extra Power wipe for cleaning extra tough [jobs] [messes]
- Fast drying; leaves [virtually] no dull or sticky residue
- [For] [deep] scrubbing
- [For] [deep] scrubbing PLUS surface cleaning
- [For] deep cleaning
- For [light touch ups] [quick clean-ups] [in one easy step]
- For a Powerful Clean
- For everyday messes
- For the quick touch ups, try Lonza Disinfectant Wipes
- For when a regular [wipe] [cloth] [just] can't get the job done
- Gets up stuck-on messes [so you don't have to get on hands and knees]
- Greasy messes
- [Great] [Designed] [Built] [Tough] [Textured Design] for your Toughest Messes
- [Great] [Designed] [Built] for Tough [Messes] [Cleaning]
- [Great] for [Spring] [Home] [Kitchen] [Bathroom] [Dorm] [Office] [Cart] [Car] Cleaning
- [Great] for Cleaning Your [Home] [Kitchen] [Bathroom] [Room] [Dorm] [Office] [Cart] [Car]
- Great for Cleaning a Classroom
- Great for cleaning around the toilet
- Great on Kitchen grease
- Grimy messes
- Handles daily clean-ups with no need for additional sprays, sponges or buckets.
- Heavy [light] duty [jobs]
- Helps you finish [cleaning] fast [quickly]
- Leaves [no residue] [a streak free shine]
- Leaves your [house] [bathroom] [kitchen] fresh and clean
- Life doesn't stop for messes, [Wipe] [Clean] it up
- Life is Messy, [Wipe] [Clean] it up
- [Long lasting] [lasts a long time] [goes further] [last longer]
- Low-streak formula is great on [glass] [mirrors] [dark countertops] [stainless steel] [stovetops] [stainless]
- Makes [your job] [cleaning] [easier] [easy]
- More scrubbing power
- No [mixing] [spraying] [mess] [and / or fuss] [no muss]
- No more need to get on your hands and knees to [scrub] [or clean] stubborn spots.
- No rinsing required
- No sprays, no sponges, no mess
- Now [2x] [3x] [4x] [5x] the [grease] cleaning power
- Now cleaning is [faster] [easier] than [ever] [before]
- Now cleans better on grease
- One step [clean] [cleaning]
- Our most powerful [grease] [deep] cleaning wipe ever
- Our most powerful cleaning formula ever
- Picks up more messes than other [wipes] [cloths]
- Powerful cleaner for kitchen and bath
- Powers through [tough messes] [the dirt] [the grime]
- Powers through tough messes
- Powers through tough messes all over the house
- Quick easy clean-ups.
- Removes the grime to give you more time [alt: Removes the grime so you have more time]
- Scrub-N-Wipe[s]
- [Scrubs] [cleans] better than ever
- Scrubs like no other [wipe] [cloth]
- Sticky messes

**CLEANING CLAIMS (Cont.):**

- Streakfree
- The convenient way to keep your home looking “just cleaned”
- The wipe to use when you don’t have much time
- Touch Up
- Tough cleaning [made easy] [made easier] [at your fingertips]
- Tough Cleaning at your Fingertips!
- Tough cleaning without the tough cleaning smell
- Tough Enough to Clean a Classroom
- Tough enough to do the bigger cleaning jobs.
- Traps & locks away [dirt] [grease] [messes] [crumbs] [hair] [lint] [dust] [dirty greasy messes]
- Traps and locks away dirt
- Traps and locks grease and grime
- Use [daily] to clean bathroom soils such as soap, soap scum, toothpaste, hair spray, hair gel, cosmetics, shaving cream, hand or body lotion.
- Wipe down your seat. Bring [wet] [wipes] [or] [handi-wipes] to wipe down the [arm rests] [window areas] [seatbelt clasps] [and] [tray table] where you'll be sitting.
- [Wipes] [Cloths] are good for quick touchups
- Wipes Away [Tough] [Everyday] [Messes] [Grease] [Grime]
- Wipes Out [Tough] [Everyday] [Messes] [Grease] [Grime]
- Wipes Through [Tough] [Everyday] [Messes] [Grease] [Grime]
- Wipes to a [Clean] Shine [Sparkle]
- Wipes Up [Tough] [Everyday] [Messes] [Grease] [Grime]
- Won't leave greasy residue on hands
- Worry free cleaning

**FRESHNESS, CLEANING AND ODOR ELIMINATION CLAIMS:**

- A fresh take on tough cleaning
- An effective way to clean and deodorize against odor-causing bacteria.
- Deodorizes
- Don't just mask odors – [eliminate][neutralize] them
- Eliminate dirt and [neutralize] odor
- [Eliminates][Neutralizes] odors [and freshens] on contact
- For a cleaner, fresher [home] [house], great for [all around] the [house] [home] [kitchen] [bath]
- For a long lasting scent experience
- Fresh, clean scent
- Freshens [as you clean]
- Leaves a [light] [clean] [fresh] scent
- Leaves a clean, fresh scent
- Light, clean scent
- Long lasting scent
- Powers through odor
- Power[s] through [tough] [messes] [dirt] [and grease] and [help[s]] [eliminate[s]][neutralize[s]] odors
- Tough on odor
- Wipes out odors
- [With a] [fresh] [clean] [citrus] [lemon] fragrance

## Scent Names

{Note to reviewer: each block below also represents a graphic depicting the corresponding scent with the exception of citrus, apple, and berries, which will be submitted to the Agency for review.}

• [with] [fresh scent] [scent name] [fresh scent]	• Linen & Sky
• (scent names)	• Rocky Springs & Cool
• Meadows & Rain	• Apple Spice & Delight
• Lavender Vanilla & Comfort	• Powder & Elegance
• Vanilla Lavender & Comfort	• Blossoms & Breeze
• Citrus & Light	• Summer & Splash
• Spring & Renewal	• Berries & Paradise
• Cool Mist	• Pure Linen
• Eucalyptus Pine	• Vanilla
• Fresh Lavender	• Warm Apple Spice
• Island Retreat	• Wild Berry
• Mountain Air	• Orange
• New Car	• Fresh Outdoors

## ANTIBACTERIAL CLAIMS:

- 3 [steps] in 1- wipes, scrubs and disinfects [so you finish faster]
- 3 [steps] in 1- wipes, scrubs and [sanitizes] [so you finish faster]
- All around the house [disinfecting] [sanitizing] [cleaning formula]
- Antibacterial
- Antibacterial Formula
- [Antimicrobial] [antibacterial] [disinfecting] [sanitizing]
- As the leader in automotive car care, (*insert company name*) delivers this Disinfecting Wipe to give you the power of deep cleaning and disinfecting in one easy step.
- Clean and [Disinfect] [Sanitize] from Classroom to Playground [and everything in between]
- Cleans and disinfects in one [easy] step
- Cleans and sanitizes in one [easy] step
- Cleans and [disinfects] [sanitizes] [without scratching] [surfaces]
- Cleans and [disinfects][sanitizes] external electronic surfaces including tv's, radios, cell phones, PDA devices, computer keyboards, lap tops, gaming consoles, etc.
- Cuts [tough] grease, kills bacteria\*\*\*\*
- Daily [Surface] [Disinfectant] [Sanitizer] [Cleaner]
- Deep Clean and Disinfect [!]
- Deep Clean and [Sanitize] [!]
- [Designed] [Built] for [disinfecting] [sanitizing] and [cleaning] [wiping] everyday messes
- [Designed] [Built] for Everyday [Disinfecting] [Sanitizing] [Cleaning] [Wiping] [Messes]
- [Disinfect] [Sanitize] [Surfaces] [Your House] [Your Kitchen] [Your Bathroom] [Daily] [Everyday]
- [Disinfect] [Sanitize] [Your Desk] [Your Office] [Your Room] [Daily] [Everyday]
- [Disinfecting] [Sanitizing] Formula
- [Disinfecting] [Sanitizing] [Wipes] [Cloths]
- [Disinfects] [Sanitizes]
- [Disinfects] [as it cleans] [and scrubs in one easy step] [without [a] [the] [that] disinfectant smell]
- [Sanitizes] [as it cleans] [and scrubs in one easy step] [without [a] [the] [that] [sanitizer] smell]
- Disinfects as it Deep Cleans [!]
- [Sanitizes] as it Deep Cleans [!]
- Disinfects [Sanitizes], deep scrubs and surface cleans
- Disinfecting wipes with scrubbing action
- Disinfects while cleaning [up] stubborn messes
- Sanitizes while cleaning [up] stubborn messes
- Dual action-cleans up stubborn messes while it disinfects
- Dual action-cleans up stubborn messes while it sanitizes
- Each pre-moistened wipe kills 99.9% of germs and bacteria, including the \*Flu Virus, while cleaning [your] [dash], [steering wheel], [vinyl], [glass] [and more] to a virtually streak free finish.

## ANTIBACTERIAL CLAIMS (Cont):

- Ease of disinfection has never been simpler
- Effective in sanitizing [your][household][kitchen][bathroom][surfaces]
- Effective in the presence of 5% serum contamination
- Effectively [disinfects] [sanitizes] common household surfaces
- Everyday [Surface] [Disinfectant] [Sanitizer] [Cleaner]
- [Finally] a [wipe] [cloth] that cleans [and] [disinfects] [sanitizes]
- Great for Everyday [Disinfecting] [Sanitizing] [Cleaning] [Wiping] [Messes]
- Hospital Disinfectant
- Kills 99.9% of [Germs] [Bacteria] [Viruses\*] [Bacteria and Viruses\*]
- Kills Athletes Foot Fungus, Trichophyton mentagrophytes
- Kills bacteria\*\*\*\* [while it cleans]
- Kills Bathroom shower mold
- Kills Cold (and Flu virus<sup>9</sup>)  
<sup>9</sup>On Hard Nonporous Surfaces
- Kills common household bacteria
- Kills common [household][kitchen][bathroom] bacteria
- [Kills] [Eliminates] [Removes] [Destroys] [*Insert pathogen or pathogens other than avian influenza A from lists on pages 18-19*] [on [pre-cleaned] environmental surfaces]
- [Kills] [Eliminates] [Removes] [Destroys] 99.9% of bacteria
- [Kills] [Eliminates] [Removes] [Destroys] 99.9% of bacteria, leaves [leaving] surfaces [clean and] disinfected
- [Kills] [Eliminates] [Removes] [Destroys] avian influenza A H3N2 [and] H5N1 on pre-cleaned environmental surfaces
- [Kills] [Fights] Germs [Influenza Type A/Brazil, the Flu Virus<sup>9</sup>] [Bacteria] [Bacteria and Viruses\*] [Viruses\*]  
<sup>9</sup>On Hard Nonporous Surfaces
- [Kills] [Fights] Wipe Out [Germs] [Influenza Type A/Brazil, the Flu Virus<sup>9</sup>] [Bacteria] [Viruses\*]  
<sup>9</sup>On Hard Nonporous Surfaces
- Kills Foot Fungus, Trichophyton mentagrophytes
- Kills germs
- Kills Mold, Mildew, & Fungus, Trichophyton mentagrophytes
- Kills Salmonella, MRSA & Flu Virus\* On Hard Nonporous Surfaces [!]
- Kills the Flu Virus<sup>9</sup>  
<sup>9</sup>On Hard Nonporous Surfaces
- Kills [Wipes Out] [99.9%] [of] [Rotavirus, the Diarrhea Causing Virus] [Listeria] [MRSA] [Methicillin-Resistant Staphylococcus Aureus] [Norwalk]
- Leaves surfaces clean and [disinfected] [sanitized]
- [Quick] [easy] way to [clean and] disinfect [in one step]
- [Quick] [easy] way to [clean and] [sanitize] [in one step]
- Reduce [risk of cross contamination] [on hard non-porous surfaces]
- Remove [99.9% of] [Bacteria] [Germs] [from Your] [Surfaces] [Home] [Kitchen] [Bathroom] [Office]
- Sanitize [commonly touched] [household] surfaces in [just] seconds[!]
- [Sanitize][Disinfect] [shopping][grocery] cart[s] [handle[s]]
- [Sanitize][Disinfect] [airplane][airliner] [tray[s]] [tray table[s]]
- [Sanitize][Disinfect] any room in the house
- [Sanitize][Disinfect] [bathroom][kitchen] [sink[s]] [faucet[s]] [toilet[s]] [flush handle][seat] [light switch] [door][handle][knob]
- [Sanitize][Disinfect] [camping][hiking][boating] equipment
- [Sanitize][Disinfect] [cell][mobile][phones]
- [Sanitize][Disinfect] [computers[s]][keyboards] [touchpads] [mouse]
- [Sanitize][Disinfect] [daycare][childcare] [facilities]
- [Sanitize][Disinfect] [desk tops] [work tables] [work areas] [school desks] [shared equipment]
- [Sanitize][Disinfect] [hotel][motel][public][shared] [TV][television[s]] [remote control[s]][remote[s]] [telephone[s]][phone[s]] [computer[s]][keyboard[s]] [fax machine[s]]
- [Sanitize][Disinfect] the hard, non-porous surfaces of [cabinets], [chairs], [counter[s]top[s]], [shower][door[s]][stalls], [bathtub[s]], [sink[s]], [vanities], [vanity][top[s]], [bathroom][fixture[s]][faucet[s]]
- [Sanitize][Disinfect] the hard, non-porous surfaces of [personal protective equipment][PPE][respirators][full face breathing apparatus][gas masks][goggles][face shields][hearing protection][ear covers][safety ear



muffs][helmets][protective head gear][hard hats]

#### ANTIBACTERIAL CLAIMS (Cont.):

- [Sanitize][Disinfect] the hard, non-porous surfaces of [sports][sporting][gym][athletic][workout] [equipment][machines]
- Sanitize][Disinfect] the hard, non-porous surfaces of [wrestling][gymnastic][gym][athletic][yoga][tumbling] [mats][pads]
- [Sanitize][Disinfect] the [exterior] of [common] [household][kitchen] appliances
- [Sanitize][Disinfect] [waiting rooms] [public areas]
- [Sanitize][Disinfect] [your][common] [household] [surfaces][items]:[such as] [high chairs] [booster seats] [strollers] [car seats] [cribs] [tables] [tabletops] [counters] [countertops] [appliances] [sinks] [glazed tiles] [light switches] [door handles] [railings] [telephones] [trash][garbage][can[s]][receptacle[s]][bin[s]]
- Sanitizing Wipes
- The convenient way to [disinfect] [sanitize] your household surfaces
- The interior of your vehicle is not only susceptible to dirt and dust, but can also harbor germs, especially during Flu season.
- The smart [way to] clean [and disinfect] [and sanitize]
- The wipe that disinfects while it cleans [up [stubborn] [stuck-on] messes]
- The wipe that sanitizes while it cleans [up [stubborn] [stuck-on] messes]
- [This product or product name] is an effective sanitizer against [Staph][Klebsiella][Campylobacter].
- Two in one action [cleans and [disinfects] in one easy step]
- Two in one action [cleans and [sanitizes] in one easy step]
- Wet [Mopping] Cloths [wipes] clean and disinfect
- Wet [Mopping] Cloths [wipes] clean and sanitize
- Wipe Away [Germs] [Influenza Type A/Brazil, the Flu Virus<sup>9</sup>] [Bacteria] [Viruses\*]  
<sup>9</sup>On Hard Nonporous Surfaces
- Wipe out germs [in just minutes]
- Wipe Up [Germs] [Influenza Type A/Brazil, the Flu Virus<sup>9</sup>] [Bacteria] [Viruses\*]  
<sup>9</sup>On Hard Nonporous Surfaces
- [With proven] Antibacterial Action
- Worry free [disinfecting] [sanitizing] [cleaning]

<sup>2</sup> For qualified claims insert some pathogens from page 19.

**Note to reviewer:** If a supplemental label is using the “Germs” claim, per the EPA Guidance on use of the term “Germs” in order to make an unqualified “germ” claim the supplemental label must list all 3 of the major classes of organisms: Virus, Bacteria, Fungi and label must bear disinfectant directions. In order to make a qualified “germ” claim the supplemental label must be a broad spectrum disinfectant and list additional claims against one of the following two major classes of organisms: Fungi or Viruses and must bear disinfectant directions. The front panel of the label for a qualified claim must contain a designator (such as \*\*) that refers the user to the qualified statements that describes the type of germ the product is efficacious against. An unqualified claim can appear on front or back panel and does not require a designator.

**H1N1 CLAIMS:**

- Kills Pandemic 2009 H1N1 influenza A virus.
- Kills Pandemic 2009 H1N1 influenza A virus (formerly called swine flu).
- Respiratory illnesses attributable to Pandemic 2009 H1N1 are caused by influenza A virus. This product [Product Name] is a broad-spectrum hard surface disinfectant that has been shown to be effective against (*influenza A virus tested and listed on the label*) and is expected to inactivate all influenza A viruses including Pandemic 2009 H1N1 (formerly called swine flu).
- This product has demonstrated effectiveness against influenza A virus and is expected to inactivate all influenza A viruses including Pandemic 2009 H1N1 influenza A virus.
- This product has demonstrated effectiveness against (*influenza A virus tested and listed on the label*) and is expected to inactivate all influenza A viruses including Pandemic 2009 H1N1 (formerly called swine flu).

**SANITIZING CLAIMS:** {Below claims will only be used when Sanitizing directions are included on final label}

- 99.9% effective against [Staphylococcus aureus [Staph]] [Klebsiella pneumoniae [Klebsiella]] [Campylobacter jejuni [Campylobacter]] in [just] 15 seconds[!]  
99.9% effective against bacteria<sup>5</sup> in [just] 15 seconds[!]
- Kills 99.9% of bacteria<sup>5</sup> in [just] 15 seconds[!]
- Kills 99.9% of [Staphylococcus aureus [Staph]] [Klebsiella pneumoniae [Klebsiella]] [Campylobacter jejuni [Campylobacter]] in [just] 15 seconds[!]

<sup>5</sup> [Bacteria]

Staphylococcus aureus [Staph]  
Klebsiella pneumoniae [Klebsiella]  
Campylobacter jejuni

**USAGE CLAIMS:**

- For Homes, Institutional and Industrial Use
- For household surfaces [all around the house] indoor and outdoor
- For use [at home], [away from home], [in public places] [on the go]
- Multi-purpose
- Multi-surface
- [Send] Bring Wipes [Me] to School
- Specially formulated for use in the [kitchen] [bathroom]

#### VALUE CLAIMS:

- [2] [Two] [1] [One] For You [1] [One] For School
- 2 Free Cloths
- 2 [Wipe] [cloth] Trial Pack
- 2 [Wipe] [cloth] Starter Size
- [Assorted] [Mixed] [Special] [Variety] [Multiple] [Multi] [Bundle] [Pack]
- Back to School [Variety] [Special] [Bundle] [Pack]
- Bonus Pack[!]
- Bonus Twin Pack
- Bonus Size
- Convenient [size]
- Convenience
- Family Pack
- Get it done with one
- Guaranteed [to clean longer] [you'll use fewer wipes to clean more]
- Large Size, Small Size, Bonus Pack
- More cleaning in one wipe
- More cleaning power per wipe
- One wipe goes a long way
- One wipe will get it done
- Sample Size
- [Special] School [Variety] [Bundle] [Pack]
- Spring Cleaning [Special] [Value] [Bonus] Pack
- Travel [Size] [pack]
- Value
- Value Size
- Variety Pack
- XX% More [Free] Wipes, Bonus Size, [Bonus] [Free] [27-ct] [35-ct] [XX-ct] Wipes, XX for the Price of YY.

#### SURFACE SAFETY CLAIMS:

- Non-abrasive
- Non-scratch[ing]
- Non-scratching
- Not recommended for use on LCD computer and/or television screens.
- These [wipes] [towelettes] [cloths] will not harm [most] surfaces.
- Will not harm vinyl, laminate wood and ceramic<sup>2</sup>  
<sup>2</sup>Do not use on unfinished oiled or waxed wooden boards, non-sealed tiles or carpeted floors because they may be water sensitive
- Will not scratch
- Won't dry out, damage or fade automotive surfaces.

#### SUBSTRATE CLAIMS:

- XX% thicker [\*] [than an ordinary wipe] [and] [&]
- [XX] [XX%] Larger [\*] [and] [&]
- XX [insert brand name] [Brawny®] [Giant] [Durable] wipes = YY [ordinary] [regular] wipes [\*]
- \* [vs.] [than] [compared to] [leading] [ordinary] [regular] [X" [by] [x] Y"] [8"x7"] wipe[s] [towel[s], [cloth[s]
- 100% Cotton Wipe fabric
- 2 sided wipe [cloth]
- 2 Sides
- [2 Sides:] [scrubbing power for tough messes] [wiping side for quick cleanups]
- [2 sides:] [one for scrubbing] [one for mopping]
- 30% Thicker and Quilted Texture [for Tough] [Messes] [Cleaning]
- [30%] thicker wipes
- [Big] [, tough] cleaning wipe built to [last through every day and tough jobs][do more so that you can use [less][fewer].

- Biodegradable wipe fabric
- Brawny® strong<sup>10</sup>
- Cleans [up to] [3x][3 times][2x][2 times] the area of an ordinary wipe<sup>11</sup>

**SUBSTRATE CLAIMS (Cont.):**

- [Cloth-like texture] [Textured] for scrubbing power
- Cloth-like [textured] [strong]

<sup>10</sup> All rights reserved. Brawny®, Brawny® Man Image and the Georgia-Pacific Logo are trademarks owned by or licensed to Georgia-Pacific Consumer Products LP.

<sup>11</sup> 8"x7" disinfecting wipes

- Cloths [Wipes] quickly remove dirt, spots and smudges
- Dual [action] [purpose] [scrubs] [wipes]
- Dual Action [Cloths] [Wipes]
- Durable [giant][mega] wipe for heavy duty cleaning
- [Flushable] [and Dispersible] substrates [wipes] [towelette] [cloth]
- Get surfaces clean with fewer wipes
- Grooved for [Grime] [Tough Messes] [Grease]
- Improved scrubbing texture
- Larger [bigger]-sized wipe
- Larger Size
- Lint-free
- Long-lasting wipe handles the job from start to finish
- Made with scrubbing fibers
- [Our] toughest wipe ever
- Premoistened
- [Premoistened] [wet] [disinfecting] [sanitizing] [textured] [antibacterial] [wipes] [towelettes] [cloths]
- [Quilted Texture] [Textured] to [Scrub] [Power] [Fight] Through Tough Messes
- Scrubbing Action Wipes
- [Special] [Unique] 3-D Texture for Tough Messes
- [Strong] [Thick] wipe
- Strong wipe for Heavy Duty cleaning
- Strong wipe for tougher [jobs] [messes]
- Stronger Wipe
- [Substrate] [Wipe] [Towelette] [Cloth] [material] derived 100% from [wood pulp] [cotton] [cellulose] [recycled cellulose]
- Takes on the tough stuff
- Takes on tough cleaning
- [Textured cloth] gets up stubborn stuck on messes
- Textured [cloths] [towelettes] clean floors faster [and easier]
- Textured cloth [wipe] traps and locks dirt [deep into ridges]
- Textured [Wipe] [Cloth] [towelette] [for tough jobs] [for tough cleaning]
- Textured for better [cleaning] [scrubbing] power
- Textured to Pick Up Particles
- The wipe that is [strong] [durable] [thick] [heavy] enough to scrub [and] [clean]
- Thick, strong wipe
- Thick [wipe], cloth-like texture
- Thicker
- Thicker than an ordinary wipe
- Thicker wipe [cushionyTHICK®<sup>6</sup>]
- Thicker, cloth-like feel for tough messes
- Tough cleaning power
- Tough like a towel
- Tough [Textured] Wipes
- [Tough] [Thick] wipe[s] for tough [cleaning] [messes]
- Tough[er] wipe for tough[er] cleaning [jobs]
- [Unique] [Special] [Thick] [Quilted] Texture for Tough [Messes] [Cleaning]
- With [Magic Lock] [Magic Scrub] [Trap n' Lock] [Magic Quilt] fiber[s]
- With a cloth-like 3D texture

- With extra cleaning power [wipes] [sheets] [cloths]
- With [extra] scrubbing power

**SUBSTRATE CLAIMS (Cont.):**

- With extra strength [wipes] [sheets] [cloths]
- Works like a cloth

<sup>6</sup> cushionyThick® is a registered trademark of U.S. Non-Wovens Corporation

{Note to reviewer: A representative graphic of a substrate may be added to the label. Only a graphic of the substrate actually being used can be added to the final printed label}.

**PACKAGING CLAIMS:**

- Better [package] [dispensing]
- Breakthrough package
- [Convenient] [Hassle-free] [One-hand] dispensing
- Dispenses better
- Dispenses Like A Tissue [Tough Like A Cloth [Towel]]
- Dispenses like a tissue, cleans like a cloth
- Easier dispensing
- Easy [dispensing] [Glide Lid]
- Easy dispense [lid] [package]
- Easy dispensing [and] [tough texture] [for the ultimate wipes experience]
- [Easy] [EZ] start
- Easy [EZ] Dispenser
- Easy [Start Lid] [Start Package] [Grab Lid]
- EZ [to start lid] [start package] [Grab Lid]
- EZ dispensing lid
- EZ [Easy] to use lid
- Easy to [open] [thread] [access lid] [dispense]
- Easy to use
- Easy-glide dispensing top
- [Eco-shape Canister]
- Energy Efficient Canister
- Fewer rips, bunches, and snags
- Great dispensing lid
- Fits conveniently in your glove box or drink holder
- [Just like a tissue box] [Tissue box dispensing]
- Just [pull] [pop] wipe and toss.
- No [more] [pinched fingers] [rips] [tears]
- One at a time [dispensing, like a tissue box]
- One wipe at a time dispensing
- Only use approved refill packs.
- Package breakthrough
- Package is 100% recyclable
- Package contains xx% recycled materials
- Package contains xx% post consumer waste
- Pop up
- Pop and go
- Pop and Clean
- Portable
- Recyclable packaging
- Refill [size] [pack] (*Refill for Lonza Disinfectant Wipes container*) [tub]
- [Regular] [and] [Everyday] Wipe Pack

- Specially designed package that easily dispenses one at a time

**{Note to reviewer: The following may only be used if the Supplemental Registrant has documentation to support these claims.}**

- Wipe fabric made from 100% renewable resources
- [Substrate] [Wipe] [Towelette] [Cloth] composed of 100% [x%] recycled materials
- [Substrate] [Wipe] [Towelette] [Cloth] composed of 100% [x%] renewable materials
- Converted with 100% [x%] wind energy
- Less Oil Consumption], [Landfill Waste], [Production Energy], [and] [Freight Energy]
- [Made with] X% less plastic
- [Made with] X% less plastic [than similar size containers][than previous[ly] used container[s]]
- Package contains xx% recycled materials
- Package contains xx% post consumer waste
- Packaged with 100% [x%] wind energy
- Packaging contains XX% [post-consumer waste] [recycled materials]
- Produced with Wind Energy
- The product was manufactured with 100% Wind Energy
- [This product was] [Produced] [Manufactured] with [100%] [x%] wind energy

#### **FLOOR MOP CLAIMS:**

- Fits most sweepers
- Fits (*insert name of mop*)
- Fits leading sweeper products [tools]
- Fits leading sweepers
- Fits Lysol Quick Clean & Swiffer®<sup>3</sup> Tools.
- Fits Most Popular Brands
- Fits Swiffer®<sup>3</sup>
- Fits Swiffer®<sup>3</sup> Mop-Head
- Fits Swiffer®<sup>3</sup> or Pledge Grab-It®<sup>4</sup> Mop Heads
- For Mopping

<sup>3</sup> Swiffer® is a registered trademark of the Procter & Gamble Company.

<sup>4</sup> Pledge Grab-It® is a registered trademark of S. C. Johnson & Son, Inc.

#### **STARTER KIT CLAIMS:**

- 2 in 1 Starter Kit
- \$X in [LYSOL®]<sup>8</sup> refill coupons inside
- Assemble [[4]-piece mop]
- [Attach [cloth to mopping head]] [Clean] [Toss]
- (*Brand/Sub-brand/Product Name*) Dry [Mopping] [cloths] [wipes] refills [are available] [separately]
- (*Brand/Sub-brand/Product Name*) Wet [Mopping] [cloths] [wipes] refills [are available] [separately]
- Cleans the floor and baseboard simultaneously
- Coupons inside
- Dry [Mopping] Cloths [wipes] pick up dust, dirt and hair. [Deep ridges and grooves trap and lock it in.]
- [Flaps] Flip[s] up [to clean] [corners] [and] [baseboards]
- [Flaps] Flip[s] up to get into hard to reach areas
- [For] [deep] corner and baseboard cleaning
- [For] [quick] [easy] Assembly
- For Sweeping and [&] Mopping
- Gets into corners [and small spaces] easily
- Includes: (*Brand/Sub-brand/Product Name*) Mop, [2] Wet Mopping Cloths [wipes] and [2] Dry Mopping Cloths [wipes]
- [LYSOL®]<sup>8</sup> [Sub-brand/Product name] [Mopping] Kit
- [No-touch,] easy attachment of cloth [wipe] [to mop]

Lonza Disinfectant Wipes

EPA Reg. No. 6836-313

EPA Stamped Label 2015-07-07with Notif 2015-09-28

- Push [activation] slide [in] [one] direction] to [raise] [engage] flaps
- Push [activation] slide [in] [other][opposite] [direction] to [disengage] [lower flaps]

**STARTER KIT CLAIMS (Cont.):**

- Refills for (*Brand/Sub-brand/Product Name*) Wet [mopping] [cloths] [wipes] and (*Brand/Sub-brand/Product Name*) Dry [mopping] [wipes] [cloths] are available [separately]
- Starter [Mopping] Kit
- Use [the] (*Brand/Sub-brand/Product Name*) wet [mopping] cloths [wipes] to clean as directed
- Use[s] 100% of the surface of the cloth [sheet] when used with [Clean-Flip™] (*Brand Name*) Mop.
- Use[s] the whole surface of the cloth [or sheet] when used with [Clean-Flip™] (*Brand Name*) Mop.

<sup>8</sup> Lysol is a registered trademark of Reckitt Benckiser Inc.

**OTHER CLAIMS:**

- 100% satisfaction guaranteed or your money back. If you are unsatisfied for any reason, contact us for a full refund
- [After use], just toss wipe away [in trash][in garbage].
- Ammonia Free [formula]
- As the leader in quality car care, (*insert company name*) absolutely guarantees its products will meet or exceed your highest standards.
- Bleach Free [formula]
- Cleaning Advice? Visit “insert website address”
- Clear drying formula
- Clear,drying formula for multiple surfaces.
- Comments?
- Contains No Phosphate
- Do not flush in toilet.
- Do not use as a diaper wipe or for personal cleansing.
- Do not use for personal cleansing.
- Does not contain [chlorine] bleach or ammonia.
- For more Tips & Tricks, visit (insert website)
- For questions or comments please call (*Insert phone #*) or visit our website at (*insert website*)
- Fragrance-free
- Call “Insert phone #”
- Mail the original UPC and purchase receipt within 30 days
- Money Back Guarantee
- No harsh scent
- [NOTE:] Not for personal cleansing.
- Phosphate free
- Quality Guaranteed
- Questions [or comments]? [Please] [Visit] [(“insert website”)] [or] [Call] [(“Insert phone #”)]
- If you are not completely satisfied with this product, return it for a refund or replacement.
- Ready to Use
- Save time with [this product or product name][!]
- Saves steps
- Saves Time
- This is not a baby wipe!
- This product contains no [phosphates or] phosphorous [compounds].
- [Tips & Tricks:] Keep a canister in your car for clean-up on the go.
- Try the full line of (*insert company name*) Wipes
- [Visit] “insert website address” [for details]
- Visit our website for additional products and product information
- We work hard so you don’t have to!®<sup>7</sup>

<sup>7</sup> We work hard so you don’t have to!® is a registered trademark of S. C. Johnson & Son, Inc.

### **Lonza Disinfectant Wipes:**

- deliver non-acid [disinfectant] [sanitizer] and cleaning performance
- [are a heavy duty disinfectant cleaner that] cleans, disinfects and deodorizes in one labor saving step.
- [are a heavy duty sanitizer cleaner that] cleans, sanitizes and deodorizes in one labor saving step.
- deodorizes by killing microorganisms [bacteria] that cause offensive odors.
- [improves labor results by] effectively controls [controlling] malodors.
- will [disinfect] [sanitize], clean and deodorize surfaces in rest rooms and toilet areas, behind and under sinks and counters, garbage cans and garbage storage areas, and other places where bacterial growth can cause malodors.
- is formulated for use in daily maintenance programs with a balance of detergents, biocides and malodor counteractants that deliver effective cleaning, [disinfecting] [sanitizing] and malodor control.
- is a complete, chemically balanced disinfectant
- will not leave grit or soap scum.
- is a [one-step] disinfectant cleaner that is effective against a broad spectrum of bacteria when used as directed.
- is a proven "one-step" disinfectant - cleaner which is effective in the presence of 5% serum contamination.
- [Kills] [eliminates] [kitchen] [bathroom] [household] bacteria.
- [Kills] [eliminates] common household bacteria.
- Starts killing [bacteria] on contact
- Kills [eliminates] bacteria
- help you accomplish things you never thought a wipe could do
- [wipes] [cloths] [sheets] help you to accomplish things you never thought a wipe could do
- [help] take the hassle out of dispensing [disinfecting] [sanitizing] wipes. The Easy-Glide Lid dispenses wipes one-at-a-time, like a tissue-box, so you get the number of wipes you want with no pinched fingers, [torn wipes], [or] [jammed lids]. Plus they kill bacteria\*\*\*\* to keep your [family's] home [clean]. Use it on bathroom and kitchen surfaces like countertops, appliances, door handles, light switches, toilets, sinks, and tubs.
- are designed for your toughest tasks. They are [thick and strong] [thicker and stronger] to stand up to [tough] [your toughest] messes, and they have a cloth-like texture for extra scrubbing power. Plus they kill bacteria\*\*\*\* to [help] keep your [family's] [home] [clean]. Try it [them] on [your] tough [toughest] messes in the kitchen and bathroom, like baked-on grease on your stove [top], sticky messes on your counters, and built-up grime on your bathroom sinks.

Cross-contamination is of major [housekeeping] concern. **Lonza Disinfectant Wipes** have been formulated to aid in the reduction of cross-contamination on treated surfaces in the home, schools, institutions and industry.

### **Use Lonza Disinfectant Wipes:**

- in federally inspected Meat & Poultry Plants as a disinfectant on all surfaces in inedible product processing areas, non-processing areas and / or exterior areas..
- as a [disinfectant] [sanitizer] on hard, nonporous surfaces.
- in kitchens, bathrooms and other household areas.
- to clean and [disinfect] [sanitize] finished floors, sinks and tubs.
- for non-scratch cleaning of showers and tubs, shower doors and curtains, fixtures and exterior toilet bowl surfaces.
- to clean and disinfect hard non-porous personal [safety] [protection] equipment, protective headgear, hard hats, half mask respirators, full face breathing apparatus, gas masks, goggles, spectacles, face shields, silicone rubber or PVC hearing protectors and vinyl covered ear muffs. Rinse all equipment that comes in contact with skin before reuse with clean warm water [about 120°F], and allow to air dry. [Caution: Cleaning at 120°F temperature will avoid overheating and distortion of the personal [safety] [protection] equipment that would necessitate replacement.
- to clean and [disinfect] [sanitize] hard non-porous surfaces of gym equipment, exercise machines, wrestling mats and gymnastic equipment.
- to clean and [disinfect] [sanitize] hard non-porous [safety] [protection] equipment, protective headgear, gym equipment, exercise machines, wrestling mats, gymnastic equipment and equipment tables.



[Insert Brand name] is registered in the United States and Trademark Office to [Insert Company Name].  
{Note to reviewer: Each entry below also represents a graphic depicting the corresponding area of use. The graphics will only represent individual objects or outsides or insides of buildings as described below. No people, animal, or food will be depicted in graphics.}

**[AREAS OF USE:]**

Use **Lonza Disinfectant Wipes** in:

Bathrooms	Hotels
Children's room	Institutional facilities
Homes [households]	Institutions
Kitchens	Laundry rooms
Living room	Locker rooms
	Motels
Dental offices	Playrooms
Hospitals	Prisons
Medical Offices	Public facilities
Nursing homes	Public rest rooms
	Salons
Day care centers	Schools
Nurseries	Shower and bath areas
	Sick rooms
Bars	
Cafeterias	Camp grounds
Convenience stores	Play ground equipment
Food processing plants	
Food storage areas	Airplanes
Institutional kitchens	Airports
Restaurants	Ambulances
USDA inspected food processing facilities	Boats
	Buses
Athletic facilities	Campers
Barber shops	Cars
Business and office buildings	Emergency [Police] [EMS] [Fire] [Rescue] vehicles
Colleges	Mobile homes
Correctional facilities	Ships
Dressing rooms	Taxis
Exercise facilities	Trailers
Factories	Trains
Family Rooms [Dens]	Transportation terminals
Health clubs	

Non Food Contact Sanitizing Use Areas: Homes, Schools, transportations, airplanes, trains, automobiles, office buildings, dairies, meat processing plants, food processing areas, food handling areas, bars, restaurants, healthclubs, gyms, grocery stores, weight rooms, exercise rooms.

{Note to reviewer: Each entry below also represents a graphic depicting the corresponding type of surface. No people, animal, or food will be depicted in graphics. Only exteriors of microwaves and refrigerators will be depicted. Toy graphics will be submitted to Agency for review.}

**[TYPES OF SURFACES:]**

Use **Lonza Disinfectant Wipes** on [washable] hard, nonporous surfaces of: {or}

Use [**Lonza Disinfectant Wipes**] on hard nonporous surfaces including: {or}

[This product] will clean and disinfect washable hard, nonporous surfaces of:

- |  |   |
|--|---|
| Athletic Equipment   | Sealed floors   |
| Appliances - exteriors   | Seat belt buckle                                      |
| Audio equipment  | Seats   |
| Bathroom fixtures  | Showers   |
| Bathtubs [Fiberglass]  | Shopping cart handles                                 |
| Cabinets   | Shower [stalls] [walls]                               |
| Cages  | Side view mirrors                                     |
| Car console  | Sinks [bathroom, kitchen]                             |
| Car seat[s]  | Steering wheel  |
| Center console   | Stick shift   |
| Chairs   | Storage areas   |
| Change holder  | Stoves [stovetops]                                    |
| Computer keyboards   | Switch gear   |
| Counters [countertops] [Bathroom] [Kitchen]                          | Tables, [picnic tables]                               |
| Cup holders  | Terrazzo [Flooring]                                   |
| Cupboards  | Tanning Beds  |
| Desks  | Telephones  |
| Diaper changing [tables][counters]                                   | Exterior Toilet bowl surfaces                         |
| Diaper pails   | Toilet seats  |
| Door handles   | Toys <sup>12</sup>                                    |
| Doors  | Tub walls   |
| Doorknobs  | Tubs  |
| Equipment tables   | Tiles, glazed   |
| Faucets  | Turn signal   |
| Faucet Handles   | Walls   |
| Floors [Bathroom] [Kitchen]  | Window [opener]                                       |
| Finished floors  | Vinyl [Flooring]                                      |
| Garbage cans   |   |
| Gear shift   | Non-critical medical device surfaces:                 |
| Glass  | Beds [Medical] [Hospital]                             |
| GPS navigation device  | Bed frames  |
| Hardwood [Flooring]  | Bed rails   |
| Highchairs   | Crutches  |
| Interior dashboard   | Defibrillators  |
| Instrument panel and gauges  | Gurneys   |
| Lab benches  | Non-critical [hospital] [medical] equipment surfaces: |
| Linoleum   | [Medical] Examining tables                            |
| Light switches   | [Medical] [Hospital] Lamps                            |
| Laminate flooring  | [Medical] [Hospital] Scales                           |
| Microwave ovens - exteriors  | Rescue tools  |
| Navigation screen  | Resuscitators   |
| Non-Wooden Outdoor [patio] furniture except cushions and wood frames | Stands  |
| Painted surfaces   | Stretchers  |
| Parquet [Flooring]   | Stethoscopes  |
| Radio knob   | Walkers   |
| Rear view mirrors  | Wheel chairs  |
| Refrigerators - exteriors  | Ultra-sound transducers and equipment                 |
| Refrigerated storage and display equipment                           |   |

<sup>12</sup>Rinse toys with clean, potable water after disinfecting.

Other hard nonporous surfaces made of:

Acrylic  
Carbon fiber  
Fiberglass  
Finished woodwork  
Formica®  
Glass  
Glazed ceramic  
Glazed enameled surfaces  
Glazed porcelain  
Metal  
Plastic (such as polystyrene or polypropylene)  
Sealed granite  
Sealed marble  
Sealed quartz  
Sealed stone  
Stainless steel  
Upholstery- vinyl and plastic

*Formica® is a registered trademark of the Formica Corporation*

Note: Do not use on unpainted wood, natural marble or brass.

For plastic and painted surfaces, spot test on an inconspicuous area before use.

[This product or product name] will not harm most surfaces: including acrylic, sealed fiberglass and vinyl.

Do not use on unpainted wood.

{Note to reviewer: Below claims will only be used when Disinfectant directions are included on final label}

**Lonza Disinfectant Wipes** are a one-step disinfectant and Bactericidal according to the current AOAC Use-Dilution Test Method modified in the presence of 5% organic serum against:

{or}

**Lonza Disinfectant Wipes** are effective against [Kills] [Eliminates] [Removes] [Destroys]:

\*\*\*\*[Bacteria]

Staphylococcus aureus [Staph]

Salmonella enterica [Salmonella]

Pseudomonas aeruginosa [Pseudomonas]

Campylobacter jejuni [Campylobacter]

Acinetobacter baumannii

Burkholderia cepacia

Campylobacter jejuni

Corynebacterium ammoniagenes

Enterobacter aerogenes

Enterococcus faecalis [Enterococcus]

Enterococcus faecalis- Vancomycin Resistant [VRE]

Escherichia coli [E. coli]

ESBL Escherichia coli – [Extended spectrum beta-lactamase producing E. coli]

Klebsiella pneumoniae [Klebsiella]

Legionella pneumophila

Listeria monocytogenes

Salmonella schottmuelleri [Salmonella]

Salmonella typhi [Salmonella]

Serratia marcescens [Serratia]

Shigella dysenteriae [Shigella]

Staphylococcus aureus - Community Associated Methicillin-Resistant [CA-MRSA] [NRS384] [USA300]

Staphylococcus aureus - Community Associated Methicillin-Resistant [CA-MRSA] [NRS123] [USA400]

Staphylococcus aureus - Methicillin-Resistant [MRSA]

Staphylococcus aureus - Multi-Drug Resistant

Staphylococcus aureus-Vancomycin Intermediate Resistant – [VISA]

Streptococcus pyogenes [Strep] [a cause of scarlet fever]

Vibrio cholerae

[Viruses:]

\*Hepatitis B Virus [HBV]

\*Hepatitis C Virus [HCV]

\*Herpes Simplex Virus Type 1

\*Herpes Simplex Virus Type 2

\*HIV-1 [AIDS Virus]

\*Human Coronavirus

\*Influenza Type A Virus / Brazil [Influenza] [[the] Flu [Virus]]

\*Norwalk Virus [Norovirus]

\*Respiratory Syncytial Virus [RSV]

\*Rotavirus [Diarrhea-causing virus]

\*SARS Associated Coronavirus [SARS] [cause of Severe Acute Respiratory Syndrome]

\*Vaccinia Virus [Pox Virus]

*{Continued from previous page}*

[Animal Viruses:]

Avian Influenza A [virus] (H3N2)

Avian Influenza A [virus] (H5N1)

Avian Infectious Bronchitis Virus

Canine Distemper Virus

Feline Calicivirus

Newcastle's Disease Virus

Pseudorabies Virus

[Fungi:]

Aspergillus niger

Trichophyton mentagrophytes [the Athlete's Foot Fungus] [A cause of Ringworm of the foot]

*{Note to reviewer: Below claims will only be used when Sanitizing directions are included on final label}*

**Lonza Disinfectant Wipes** are [99.9%] effective against [Kills] [Eliminates] [Removes] [Destroys]:

<sup>5</sup>[Bacteria]

Staphylococcus aureus [Staph]

Klebsiella pneumoniae [Klebsiella]

Campylobacter jejuni

*{For canister}*

**To Open Package:**

Remove cover. Pull up [towelette] [wipe] [cloth] corner from center of roll. Thread through hole in the cover. Replace cover. Open center cap on cover to remove wipe. When not in use [When not using], close center cap [securely] to prevent moisture loss.

or *{For carton or tub}*

**To Open Package:** Open cover and slowly peel back label on pouch. Remove [Pull out] [wipe] [towelette] [cloth] as needed. To retain moisture, reseal [pouch] [bag] by firmly pressing seal back on the [pouch] [bag] and close [carton or tub] cover.

*{For Tub Without Pouch}*

**To Open Package:** Open cover and slowly peel back label. Remove [Pull out] [wipe] [towelette] [cloth] as needed. To retain moisture, reseal by firmly pressing and close [tub] cover.

or *{For refill, pouch or bag:}*

**To Open Package:**

[Slowly] peel back the label [open seal]. Remove [Pull out] [wipe] [towelette] [cloth] as needed. To retain moisture, reseal [pouch] [bag] by firmly pressing seal back on the [pouch] [bag].

or *{for the Travel Pack size:}*

**To Open Package:** Slowly peel back label. [Pull out] [Remove] [wipes] [towelettes] [cloths] as needed. Reseal label to retain moisture.

or **To Open Package:** Open ziplock [Tear edge of pack]. [Pull out] [Remove] [wipes] [towelettes] [cloths] as needed. Reseal ziplock to retain moisture.

or *{for the single cloth or sample pack:}*

**To Open Package:** Tear [pouch] open [at top edge of pouch] [at tear notch] [along dotted line] [where indicated] [edge of pack]. [Pull out] [Remove] [Wipe] [Towelette] [Cloth].

*{For product supplied in a single use pouch with a folded towellete, include the following:}*

Unfold [Wipe] [Towelette] [Cloth]

or

**To Open Package:** [Remove package seal[s]] [Remove safety seal[s]] [Flip] Open lid. To remove first wipe [sheet] [wet cloth] [cloth] pull up on wipe and remove wipe through [dispensing] opening [wavy dispensing opening] [orifice]. [The next wipe will pop up automatically]. [Always] close [snap] lid securely between uses [to retain moisture].

or

**To Open Package:** [Remove package seal[s]] [Remove safety seal[s]]. Open [Flip open lid [package]]. To start [remove] [first] wipe [sheet] [wet cloth] take the edge of wipe from large opening to the small dispensing opening and pull up. [The next wipe [sheet] [wet cloth] [cloth] will pop up automatically.] [Always] close [snap] lid securely between uses [to retain moisture].

or

**To Open Package:** Open Lid. To start wipes, pull up on wipe and move wipe into the small dispensing opening [orifice] [aperture] [hole] [wave] and [pull sheet up to remove wipe] remove wipe. [The next wipe [sheet] [wet cloth] will pop up automatically]. [Always] close [snap] lid securely between uses [to retain moisture].

or

**To Open Package:** Flip open[up] the lid[cover][top][cap][dispensing lid]. Thread the wipe [first wipe][cloth][first cloth][sheet] through the dispensing lid and pull up to remove wipe from package. The next wipe [sheet][cloth] pops up automatically. Close lid securely between uses to retain moisture[prevent moisture loss].

or

**To Open Package:** Press the three [3] ridges with your thumb and push up on the cap[top][lid] to open[lid]. To remove wipe [sheet] [wet cloth] [cloth] [towelette] pull up on wipe and remove wipe through [dispensing] opening [wavy dispensing opening] [orifice]. [The next wipe will pop up automatically].

or

**To Open Package:** Press the three [3] ridges with your thumb and push up on the cap[top][lid] to open[lid]. Thread the wipe [sheet] [wet cloth] [cloth] [towelette] through the dispensing lid and pull up to remove wipe from package. The next wipe will pop[pull] up automatically. [Always] Close [snap] lid securely between uses [to retain moisture].

or

**To Open Package:** Press the three [3] ridges with your thumb and push up on the lid to open. Thread the wipe through the dispensing lid and pull up to remove wipe from package. The next wipe will pop up automatically. Close lid securely between uses to retain moisture.

or

**To Open Package:** Push the area marked ["Press"] ["Push"] ["Press Here"] ["Push Here"] with your thumb and push up on the lid to open. Thread the wipe through the dispensing lid and pull up to remove wipe from package. The next wipe will pop up automatically. Close lid securely between uses to retain moisture.

or

To open package:

1. Open lid and pull out wipe from center of roll
2. The next sheet pops up automatically
3. When finished, close lid to retain moisture

or

To open package:

1. Open lid, pull out wipe from center of roll and slide through slot.
2. Pull wipe up and slightly to the side.
3. The next sheet pops up automatically.

When finished, close lid to retain moisture.

*{If the following Spanish statement is used, it must appear directly above DIRECTIONS FOR USE.}  
Si usted no entiende la etiqueta, busque a alguien para que se la explique a usted en detalle. [If you do not understand the label, find someone to explain it to you in detail.]*

#### **DIRECTIONS FOR USE:**

It is a violation of Federal law to use this product in a manner inconsistent with its labeling.

#### **TO CLEAN AND DEODORIZE:**

Wipe surface with [wipe] [towellete] [cloth] [sheet]. Let air dry. Discard used [wipe] [towellete] [cloth] [sheet] in trash. Do not flush in toilet.

#### **[TO] CLEAN [CLEANING] AND DISINFECT [DISINFECTION / VIRUCIDAL\* / MOLD AND MILDEW CONTROL] DIRECTIONS]:**

Wipe [hard, nonporous] surface with [wipe] [towellete] [cloth] [sheet] until surface is visibly wet. [Use enough wipes to thoroughly wet surfaces.] [Use [enough] [extra] wipes to keep surfaces [visibly] wet for 10 minutes.] [Keep surfaces [visibly] wet for 10 minutes.] [Wipe surface and let it remain [visible] wet for 10 minutes.] Allow surface to remain wet for 10 minutes. [Let air dry.] [[Let] Permit surface to [air] dry.]

If surfaces are extremely dirty, clean first with another [wipe] [towellete] [cloth] [sheet] before disinfecting. Discard used [wipe] [towellete] [cloth] [sheet] in trash. Do not flush [in toilet].

Rinse food contact surfaces with clean, potable water after disinfecting. Do not use to disinfect dishes, glassware or utensils.

Do not use as a diaper wipe or for personal cleansing.

[Note: Not recommended for unpainted wood, natural marble or brass.]

**For fungicidal activity**, Lonza Disinfectant Wipes is an effective fungicide against Trichophyton mentagrophytes [the athlete's foot fungus] in areas such as locker rooms, dressing rooms, shower and bath areas and exercise facilities.

Lonza Disinfectant Wipes is a one-step fungicide.

**For mold and mildew**, Lonza Disinfectant Wipes will effectively inhibit the growth of mold and mildew and the odors caused by them when applied to hard, nonporous surfaces. Follow disinfection instructions. Repeat treatment every seven days, or more often if new growth appears.

**\*KILLS HIV AND HBV AND HCV ON PRE-CLEANED ENVIRONMENTAL SURFACES / OBJECTS PREVIOUSLY SOILED WITH BLOOD / BODY FLUIDS** in health care settings or other settings in which there is an expected likelihood of soiling of inanimate surfaces / objects with blood or body fluids, and in which the surfaces / objects likely to be soiled with blood or body fluids can be associated with the potential for transmission of Human Immunodeficiency Virus Type 1 [HIV-1] [associated with AIDS] or Hepatitis B Virus [HBV] or Hepatitis C Virus [HCV].

#### **Special Instructions for Cleaning and Decontamination against HIV-1 or HBV or HCV on Surfaces / Objects Soiled With Blood / Body Fluids.**

**Personal protection:** Clean-up must always be done wearing protective gloves, gowns, masks and eye protection.

**Cleaning procedure:** Blood and other body fluids containing HIV or HBV or HCV must be thoroughly cleaned from surfaces and objects before application of Lonza Disinfectant Wipes. Lonza Disinfectant Wipes [this product] [wipe] [towellete] [cloth] [sheet] can be used for this purpose.

**Contact time:** Leave surface wet for 1 minute [60 seconds] for HIV-1 and 10 minutes for HBV and HCV. Use a 10-minute contact time for disinfection against all other viruses, bacteria and fungi claimed.

**Disposal of infectious material:** Blood, body fluids, cleaning materials and clothing must be autoclaved and disposed of according to local regulations for infectious waste disposal.



*{Note to reviewer: If Avian Influenza A is listed on the label the following statement is required.}*

This product is for use on hard nonporous surfaces not conducive to treatment by immersion or excess liquid against Avian Influenza A.

**SANITIZING [DEODORIZING]:**

To sanitize [deodorize] hard, non-porous, non-food contact surfaces; wipe surface, using enough [wipes] [towelettes] [cloths] to allow treated surface to remain wet for 15 seconds for Staphylococcus aureus [Staph] (ATCC 6538), Klebsiella pneumoniae (ATCC 4352), and Campylobacter jejuni (ATCC 29428). Let surface dry. For highly soiled surfaces, clean excess dirt first.

**DIRECTIONS FOR FLOOR WIPE USE:**

It is a violation of Federal Law to use this product in a manner inconsistent with its labeling.

**TO CLEAN AND DEODORIZE:** Wipe surface with wipe. Let air dry. Discard used wipe in trash. Do not flush in toilet.

**TO CLEAN AND DISINFECT [DISINFECTION / VIRUCIDAL\* / FUNGICIDAL / MOLD AND MILDEW CONTROL DIRECTIONS]:**

Pre-clean floor in normal manner. [Attach a premoistened wipe to the mop head using the [Velcro] [fasteners] provided.] Thoroughly wet floor with wipes. [Change wipe when soiled.] *{or}* [Replace with a fresh wipe once visibly soiled or no longer thoroughly wetting the surface.] Allow surface to remain visibly wet for 10 minutes. Let air dry. On average, one wipe will clean [10] [x] square feet of floor. For a larger area you may need to use more than one wipe. Discard used wipe in trash. Do not flush. Do not use to disinfect dishes, glassware or utensils. Do not use as a diaper wipe or for personal cleansing. Contact manufacturer of wood floors prior to use.

Note: Not recommended for unpainted wood, natural marble or brass.  
Do not use on unfinished, oiled or waxed wood, unsealed tiles or carpet.  
Keep [container] [pouch] flat and [lid] securely closed to keep cloths moist.

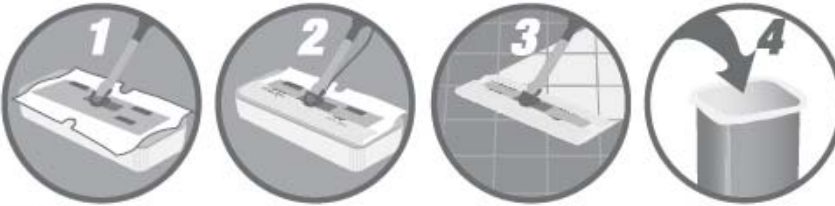
**For fungicidal activity,** Lonza Disinfectant Wipes is an effective fungicide against Trichophyton mentagrophytes [the athlete's foot fungus] in areas such as locker rooms, dressing rooms, shower and bath areas and exercise facilities.

Lonza Disinfectant Wipes is a one-step fungicide.

**For mold and mildew,** Lonza Disinfectant Wipes will effectively inhibit the growth of mold and mildew and the odors caused by them when applied to hard, nonporous surfaces. Follow disinfection instructions. Repeat treatment every seven days, or more often if new growth appears.

{Optional graphics}

Use on mop head.



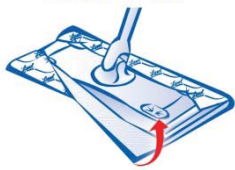
TO OPEN:

1. Cut off top of pouch with scissors.
2. Remove wipes from pouch.
3. Place wipes in plastic tub.
4. Discard empty pouch into trash.

TO USE WITH MOP:

1. Unfold top wipe in tub by pulling sides of the cloth over edges of tub.
2. Place sweeper on head
3. Wrap wipe around head of sweeper.
4. Push edges of wipe into on top of sweeper head.
5. Begin wiping. No rinsing required.
6. After use, remove soiled wipe and discard in trash. Do not flush.

**Tuck & Go**



*Note to reviewer: Similar representative graphics may be added to the final printed label!*

*Note to reviewer: Representative graphic of wipe tub and/or hand pulling out wipe fabric may be added to the final printed label.*

*Note to reviewer: A representative graphic of a substrate may be added to the label. Only a graphic of the substrate actually in the canister can be added to the final printed label.*

{PACKET LABEL TO BE USED WITH MASTER CONTAINER LABEL}

## LONZA DISINFECTANT WIPES

Active Ingredients:

Octyl decyl dimethyl ammonium chloride.....	0.069%
Dioctyl dimethyl ammonium chloride.....	0.028%
Didecyl dimethyl ammonium chloride.....	0.042%
Alkyl (C <sub>14</sub> , 50%; C <sub>12</sub> , 40%; C <sub>16</sub> , 10%) dimethyl benzyl ammonium chloride .....	0.093%
Other Ingredients:.....	99.768%
Total.....	<sup>1</sup> 100.000%

<sup>1</sup> Includes weight of absorbent wipe.

### KEEP OUT OF REACH OF CHILDREN

## CAUTION [PRECAUCIÓN]

See outer container for Precautionary Statements and Use directions

DISPOSAL: Dispose [wipe] [towelette] [Cloth] in trash after use. Discard empty [pouch] [packet] in trash.

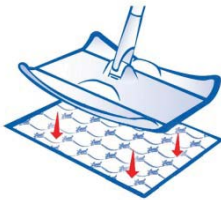
EPA. Reg. No. 6836-313  
EPA. Est. No. (*insert EPA Est. No. here*)  
Net Contents: (*expressed as avoirdupois pounds and ounces*)  
[*optional - wipe dimensions:*] X x X [inches] [in.]

Lonza Inc.  
90 Boroline Road  
Allendale, NJ 07401

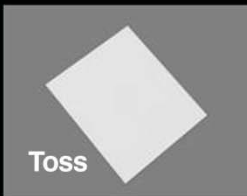
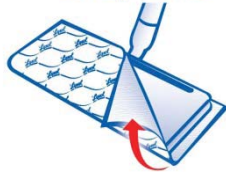
{Note to reviewer: The following are optional proprietary graphics}



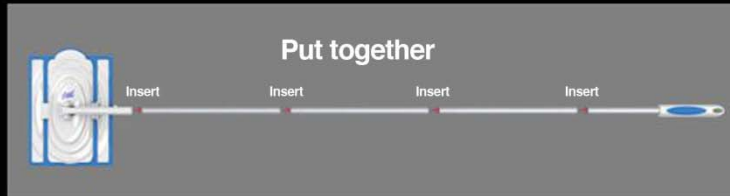
**Press & Go**



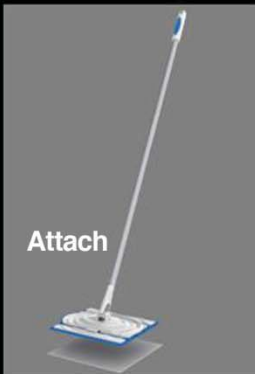
**Wrap & Go**



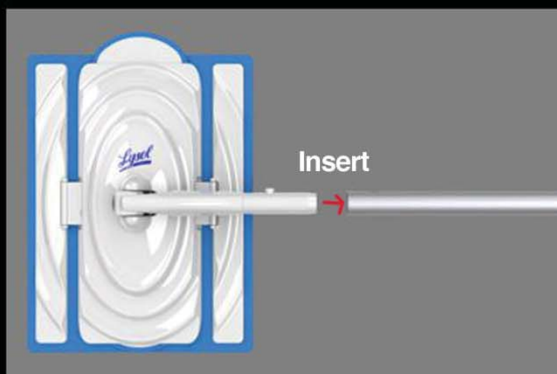
Toss



Put together



Attach



Insert



Dry Wipes  
Wet Wipes



Dry

Flipped up

Open



Wet

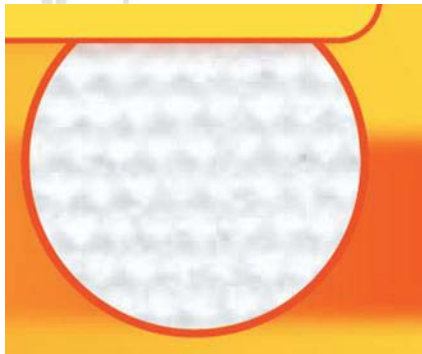
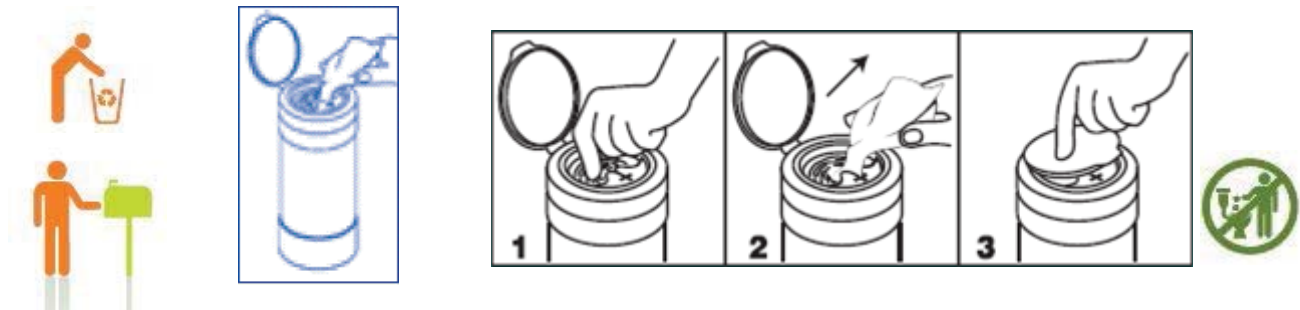
Flipped up

Open



Questions?  
Contact

{Note to reviewer: The following are optional proprietary graphics. Please refer to Note on page 17 regarding toys. Any final printed label containing an EPA-approved toy graphic will be required to include the text of footnote 12 about rinsing.}



{Note to reviewer: the above graphic denotes a picture of a substrate. It will only be added to the final printed label if this substrate is actually in the canister can.}

	<p><b>We Promise</b> to make good products at good prices for good people. Enjoy!</p>
	<p><b>Thank You</b> Target gives 5% of its income to the community to support education, the arts, social services and volunteerism.</p>



**Great Value**<sup>®</sup>

**Cleans. Disinfects. Guaranteed.**  
Return the package and the receipt for replacement or money back.  
1-877-505-2267 or visit us online at walmart.com

**Great Quality. Guaranteed.**  
Return the package and the receipt for replacement or money back.  
1-877-505-2267 or visit us online at walmart.com



{Note to reviewer: The following are optional proprietary graphics}



{Note to reviewer: The following are optional graphics}

