

DESCRIPTION

LETHAL is a specially designed insecticide for insects that have developed a resistance to chlorinated insecticides, such as DDT. LETHAL is recommended to control mosquitoes and flies in Residential Areas, Tidal Marshes, Swamps, Woodlands, Livestock Pastures and Feed Lots. It is not recommended for indoor use.

DIRECTIONS

For most effective results in the control against adult flies, mosquitoes, and gnats, use Lethal diluted with Diesel Oil. Recommended use is one gallon of Lethal per minute when the fogging machine is moving 10 mph covering a 300 ft. swath. For course spraying, Lethal should be applied at the rate of 9 oz./acre.

Lethal may be used around yards, sheds, garbage cans and fences; dairy barns, but not in places where milk is stored.

CAUTION: Do not reuse empty drum or container. Return to drum reconditioner or destroy by perforating or crushing and burying in a safe place away from water supplies.

LETHAL

(READY TO USE)

★ RESIDUAL FOGGING INSECTICIDE ★ QUICK

AN OIL SOLUBLE PHOSPHATE INSECTICIDE FOR KILLING FLIES, MOSQUITOES, GNATS.

ACTIVE INGREDIENTS:

| | |
|--|--------|
| Malathion (0,0-Dimethyl dithiophosphate of diethyl mercaptosuccinate | 6.05% |
| Beta-butoxy beta'-thiocyano-diethyl ether* | 3.37% |
| Xylene | 5.45% |
| Petroleum Distillates | 84.81% |


INERT INGREDIENTS:32%

*From LETHANE 384

CAUTION: KEEP OUT OF REACH OF CHILDREN.
SEE SIDE PANEL FOR REQUIRED PRECAUTIONS.

DO NOT USE, POUR, SPILL OR STORE NEAR HEAT OR OPEN FLAME.

AN EXCLUSIVE PRODUCT OF



STERN CHEMICAL CORPORATION
HOME OFFICE AND LABORATORY: 318 / 325-4333
2725 DESIARD STREET, MONROE, LOUISIANA 71201
NEW ORLEANS • BATON ROUGE • SHREVEPORT

WARNING

This product is toxic to fish, birds and other wildlife. Keep out of lakes, streams or ponds. Do not apply where runoff is likely to occur. Do not contaminate water by cleaning of equipment or disposal of wastes. Apply this product only as specified on this label.

Do not use on pets. Do not spray near open flame.

CAUTION

HARMFUL IF SWALLOWED.

Avoid contact with skin, eyes or clothing.

Avoid breathing spray mist.

Should the concentrate contact the skin, wash the affected areas thoroughly with soap and water.

LETHAL may cause cholinesterase inhibition upon use. Should LETHAL be swallowed, call a physician. Atropine is antidotal.

CALL A PHYSICIAN IMMEDIATELY

NET CONTENTS: _____

EPA Reg. No. 6762-25

Accepted With Comments

ACCEPTED
 APR 16 1973
 U.S. DEPARTMENT OF AGRICULTURE
 FEDERAL AGENCY FOR PROTECTION OF THE ENVIRONMENT
 OFFICE OF PESTICIDE REGISTRATION
 WASHINGTON, D.C. 20501

6762-25

DESCRIPTION

LETHAL is a specially designed insecticide for insects that have developed a resistance to chlorinated insecticides, such as DDT. LETHAL is recommended to control mosquitoes and flies in Residential Areas, Tidal Marshes, Swamps, Woodlands, Livestock Pastures and Feed Lots. It is not recommended for indoor use.

DIRECTIONS

For most effective results in the control against adult flies, mosquitoes, and gnats, use Lethal diluted with Diesel Oil. Recommended use is one gallon of Lethal per minute when the fogging machine is moving 10 mph covering a 100 ft. swath. For coarse spraying, Lethal should be applied at the rate of 9 oz./acre.

Lethal may be used around yards, sheds, garbage cans and fences; dairy barns, but not in places where milk is stored.

CAUTION: Do not reuse empty drum or container. Return to drum reconditioner or destroy by perforating or crushing and burying in a safe place away from water supplies.

LETHAL

(READY TO USE)

★ RESIDUAL FOGGING INSECTICIDE ★ QUICK

AN OIL SOLUBLE PHOSPHATE INSECTICIDE FOR KILLING FLIES, MOSQUITOES, GNATS.

ACTIVE INGREDIENTS:

| | |
|--|--------|
| Malathion (O,O-Dimethyl dithiophosphate of diethyl mercaptosuccinate | 6.05% |
| Beta-butoxy beta'-thiocyano-diethyl ether* | 3.37% |
| Xylene | 5.45% |
| Petroleum Distillates | 84.81% |
| INERT INGREDIENTS: | .32% |

*From LETHANE 384

CAUTION: KEEP OUT OF REACH OF CHILDREN.
 SEE SIDE PANEL FOR REQUIRED PRECAUTIONS.

DO NOT USE, POUR, SPILL OR STORE NEAR HEAT OR OPEN FLAME.

WARNING

This product is toxic to fish, birds and other wildlife. Keep out of lakes, streams or ponds. Do not apply where runoff is likely to occur. Do not contaminate water by cleaning of equipment or disposal of wastes. Apply this product only as specified on this label.

Do not use on pets. Do not spray near open flame.

CAUTION

HARMFUL IF SWALLOWED.
 Avoid contact with skin, eyes or clothing.

Avoid breathing spray mist.
 Should the concentrate contact the skin, wash the affected areas thoroughly with soap and water.

LETHAL may cause cholinesterase inhibition upon use. Should LETHAL be swallowed, call a physician. Atropine is antidotal.

CALL A PHYSICIAN IMMEDIATELY

NET CONTENTS: _____

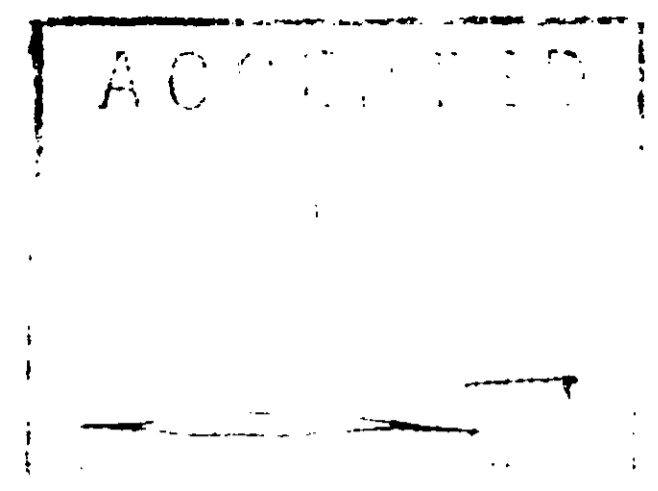
EPA Reg. No. 6762-25

AN EXCLUSIVE PRODUCT OF

STERN CHEMICAL CORPORATION

HOME OFFICE AND LABORATORY: 318 / 325-4333
 2725 DEVIARD STREET MONROE LOUISIANA 71201
 NEW ORLEANS • BATON ROUGE • SHREVEPORT





DESCRIPTION

LETHAL is a specially designed insecticide for insects that have developed a resistance to chlorinated insecticides, such as DDT. LETHAL is recommended to control mosquitoes and flies in Residential Areas, Tidal Marshes, Swamps, Woodlands, Livestock Pastures and Feed Lots. It is not recommended for indoor use.

DIRECTIONS

For most effective results in the control against adult flies, mosquitoes, and gnats, use Lethal diluted with Diesel Oil. Recommended use is one gallon of Lethal per minute when the fogging machine is moving 10 mph covering a 300 ft. swath. For coarse spraying, Lethal should be applied at the rate of 9 oz./acre.

Lethal may be used around yards, sheds, garbage cans and fences; dairy barns, but not in places where milk is stored.

CAUTION: Do not reuse empty drum or container. Return to drum reconditioner or destroy by perforating or crushing and burying in a safe place away from water supplies.

LETHAL

(READY TO USE)

★ RESIDUAL FOGGING INSECTICIDE ★ QUICK

AN OIL SOLUBLE PHOSPHATE INSECTICIDE FOR KILLING FLIES, MOSQUITOES, GNATS.

ACTIVE INGREDIENTS:

| | |
|--|--------|
| Malathion (0,0-Dimethyl dithiophosphate of diethyl mercaptosuccinate | 6.05% |
| Beta-butoxy beta'-thiocyano-diethyl ether* | 3.37% |
| Xylene | 5.45% |
| Petroleum Distillates | 84.81% |

INERT INGREDIENTS: 3.2%

*From LETHANE 384

CAUTION: KEEP OUT OF REACH OF CHILDREN.
SEE SIDE PANEL FOR REQUIRED PRECAUTIONS.

DO NOT USE, POUR, SPILL OR STORE NEAR HEAT OR OPEN FLAME.

WARNING

This product is toxic to fish, birds and other wildlife. Keep out of lakes, streams or ponds. Do not apply where runoff is likely to occur. Do not contaminate water by cleaning of equipment or disposal of wastes. Apply this product only as specified on this label.

Do not use on pets. Do not spray near open flame.

CAUTION

HARMFUL IF SWALLOWED.

Avoid contact with skin, eyes or clothing.

Avoid breathing spray mist.

Should the concentrate contact the skin, wash the affected areas thoroughly with soap and water.

LETHAL may cause cholinesterase inhibition upon use. Should LETHAL be swallowed, call a physician. Atropine is antidotal.

CALL A PHYSICIAN IMMEDIATELY

NET CONTENTS: _____


EPA Reg. No. 6762-25

AN EXCLUSIVE PRODUCT OF:

STERN CHEMICAL CORPORATION

HOME OFFICE AND LABORATORY: 318 / 325-4333
2725 DeSIARD STREET, MONROE, LOUISIANA 71201

NEW ORLEANS • BATON ROUGE • SHREVEPORT



DESCRIPTION

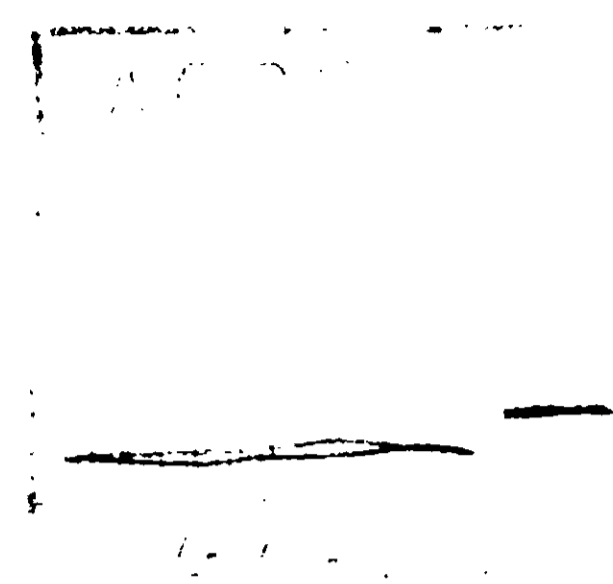
LETHAL is a specially designed insecticide for insects that have developed a resistance to chlorinated insecticides, such as DDT. LETHAL is recommended to control mosquitoes and flies in Residential Areas, Tidal Marshes, Swamps, Woodlands, Livestock Pastures and Feed Lots. It is not recommended for indoor use.

DIRECTIONS

For most effective results in the control against adult flies, mosquitoes, and gnats, use Lethal diluted with Diesel Oil. Recommended use is 40-45 oz. of Lethal per minute when the fogging machine is moving 10 mph covering a 300 ft. swath. For course spraying, Lethal should be applied at the rate of 4 oz./acre.

Lethal may be used around yards, sheds, garbage cans and fences; dairy barns, but not in places where milk is stored.

CAUTION: Do not reuse empty drum or container. Return to drum reconditioner or destroy by perforating or crushing and burying in a safe place away from water supplies.



LETHAL #2

★ RESIDUAL FOGGING INSECTICIDE
★ QUICK ★ CONCENTRATED

AN OIL SOLUBLE PHOSPHATE INSECTICIDE FOR KILLING FLIES, MOSQUITOES, GNATS.


ACTIVE INGREDIENTS:

| | |
|---|-------------|
| Malathion (0,0-Dimethyl dithiophosphate of diethyl mercaptosuccinate) | 16.63% |
| Beta-butoxy beta-thiocyano-diethyl ether* | 9.28% |
| Xylene | 15.00% |
| Petroleum Distillates | 58.21% |
| INERT INGREDIENTS | .88% |
| *From LETHANE 384 | |

CAUTION: KEEP OUT OF REACH OF CHILDREN
See side panel for required precautions.

DO NOT USE, POUR, SPILL, OR STORE NEAR HEAT OR OPEN FLAME

AN EXCLUSIVE PRODUCT OF:



STERN CHEMICAL CORPORATION
 HOME OFFICE AND LABORATORY: 318 / 325-4333
 275 DESARD STREET, MONROE, LOUISIANA 71201
 NEW ORLEANS • BATON ROUGE • SHREVEPORT

WARNING

This product is toxic to fish, birds and other wildlife. Keep out of lakes, streams or ponds. Do not apply where runoff is likely to occur. Do not contaminate water by cleaning of equipment or disposal of wastes. Apply this product only as specified on this label.

Do not use on pets. Do not spray near open flame.

CAUTION

HARMFUL IF SWALLOWED.

Avoid contact with skin, eyes or clothing.

Avoid breathing spray mist.

Should the concentrate contact the skin, wash the affected areas thoroughly with soap and water.

LETHAL may cause cholinesterase inhibition upon use. Should LETHAL be swallowed, call a physician. Atropine is antidotal.

CALL A PHYSICIAN IMMEDIATELY.

NET CONTENTS: _____

EPA Reg. No. 6762-26