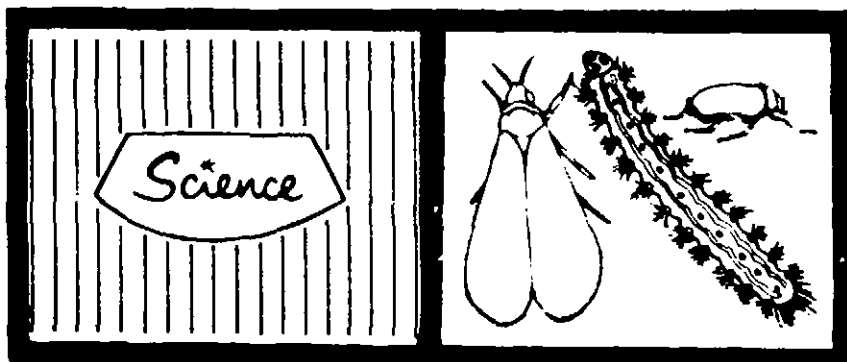


BEST AVAILABLE COPY



GARDEN INSECT SPRAY

KILLS: WHITEFLIES • JAPANESE BEETLES •
• GYPSY MOTH •

and Other Listed Insects on Flowers, Ornamentals,
Fruits & Vegetables, Flies & Mosquitoes, too.

ACTIVE INGREDIENTS	BY WEIGHT
**Malathion	12.5%
**Methoxychlor technical	12.5%
Aromatic Petroleum Solvent	69.66%
INERT INGREDIENTS	5.34%
TOTAL	100.00%

*Equivalent to 1.1% of 2-methyl-4-ethylmercaptosulfonate
**Equivalent to 1.1% of 2-methyl-4-phenyl-1,1,1-trichloroethane
†Methoxychlor 4-115-117-118-119-120-121-122-123-124-125-126-127-128-129-130-131-132-133-134-135-136-137-138-139-140-141-142-143-144-145-146-147-148-149-150-151-152-153-154-155-156-157-158-159-160-161-162-163-164-165-166-167-168-169-170-171-172-173-174-175-176-177-178-179-180-181-182-183-184-185-186-187-188-189-190-191-192-193-194-195-196-197-198-199-200-201-202-203-204-205-206-207-208-209-210-211-212-213-214-215-216-217-218-219-220-221-222-223-224-225-226-227-228-229-230-231-232-233-234-235-236-237-238-239-240-241-242-243-244-245-246-247-248-249-250-251-252-253-254-255-256-257-258-259-260-261-262-263-264-265-266-267-268-269-270-271-272-273-274-275-276-277-278-279-280-281-282-283-284-285-286-287-288-289-290-291-292-293-294-295-296-297-298-299-300-301-302-303-304-305-306-307-308-309-310-311-312-313-314-315-316-317-318-319-320-321-322-323-324-325-326-327-328-329-330-331-332-333-334-335-336-337-338-339-340-341-342-343-344-345-346-347-348-349-350-351-352-353-354-355-356-357-358-359-360-361-362-363-364-365-366-367-368-369-370-371-372-373-374-375-376-377-378-379-380-381-382-383-384-385-386-387-388-389-390-391-392-393-394-395-396-397-398-399-400-401-402-403-404-405-406-407-408-409-410-411-412-413-414-415-416-417-418-419-420-421-422-423-424-425-426-427-428-429-430-431-432-433-434-435-436-437-438-439-440-441-442-443-444-445-446-447-448-449-450-451-452-453-454-455-456-457-458-459-460-461-462-463-464-465-466-467-468-469-470-471-472-473-474-475-476-477-478-479-480-481-482-483-484-485-486-487-488-489-490-491-492-493-494-495-496-497-498-499-500-501-502-503-504-505-506-507-508-509-510-511-512-513-514-515-516-517-518-519-520-521-522-523-524-525-526-527-528-529-530-531-532-533-534-535-536-537-538-539-540-541-542-543-544-545-546-547-548-549-550-551-552-553-554-555-556-557-558-559-560-561-562-563-564-565-566-567-568-569-570-571-572-573-574-575-576-577-578-579-580-581-582-583-584-585-586-587-588-589-590-591-592-593-594-595-596-597-598-599-600-601-602-603-604-605-606-607-608-609-610-611-612-613-614-615-616-617-618-619-620-621-622-623-624-625-626-627-628-629-630-631-632-633-634-635-636-637-638-639-640-641-642-643-644-645-646-647-648-649-650-651-652-653-654-655-656-657-658-659-660-661-662-663-664-665-666-667-668-669-670-671-672-673-674-675-676-677-678-679-680-681-682-683-684-685-686-687-688-689-690-691-692-693-694-695-696-697-698-699-700-701-702-703-704-705-706-707-708-709-710-711-712-713-714-715-716-717-718-719-720-721-722-723-724-725-726-727-728-729-730-731-732-733-734-735-736-737-738-739-740-741-742-743-744-745-746-747-748-749-750-751-752-753-754-755-756-757-758-759-760-761-762-763-764-765-766-767-768-769-770-771-772-773-774-775-776-777-778-779-780-781-782-783-784-785-786-787-788-789-790-791-792-793-794-795-796-797-798-799-800-801-802-803-804-805-806-807-808-809-810-811-812-813-814-815-816-817-818-819-820-821-822-823-824-825-826-827-828-829-830-831-832-833-834-835-836-837-838-839-840-841-842-843-844-845-846-847-848-849-850-851-852-853-854-855-856-857-858-859-860-861-862-863-864-865-866-867-868-869-870-871-872-873-874-875-876-877-878-879-880-881-882-883-884-885-886-887-888-889-890-891-892-893-894-895-896-897-898-899-900-901-902-903-904-905-906-907-908-909-910-911-912-913-914-915-916-917-918-919-920-921-922-923-924-925-926-927-928-929-930-931-932-933-934-935-936-937-938-939-940-941-942-943-944-945-946-947-948-949-950-951-952-953-954-955-956-957-958-959-960-961-962-963-964-965-966-967-968-969-970-971-972-973-974-975-976-977-978-979-980-981-982-983-984-985-986-987-988-989-990-991-992-993-994-995-996-997-998-999-1000

EPA Reg. No. 275-519

EPA EST. No. 72 PA 1

KEEP OUT OF REACH OF CHILDREN
CAUTION **CAUCIÓN**

PRECAUCION AL USAR: O: Si usted no lee ingles, no use este producto hasta que la etiqueta haya sido explicado ampliamente

STATEMENT OF PRACTICAL TREATMENT

IF SWALLOWED: Call a physician or Poison Control Center immediately. Do not induce vomiting. Gastric lavage is indicated if taken internally. Do not give anything by mouth to an unconscious or convulsing person.

IF INHALED: Remove victim to fresh air.

IF ON SKIN: Remove contaminated clothing and wash affected area with soap and water. Launder clothing before reusing.

IF IN EYES: Flush with plenty of water. Call a physician.

NOTE TO PHYSICIAN: Malathion may cause cholinesterase inhibition. **ATROPINE ONLY BY INJECTION IS ANTIDOTAL.** PAM may be an effective adjunct to atropine.

SEE SIDE PANEL FOR ADDITIONAL PRECAUTIONARY STATEMENTS

SCIENCE PRODUCTS DIVISION

MILLER CHEMICAL & FERTILIZER CORPORATION

Hanover, Pennsylvania 17331

NET CONTENTS: 1 QUART

PRECAUTIONARY STATEMENT: Hazards to Humans and Domestic Animals—
CAUTION: Harmful if swallowed inhaled or absorbed through the skin. Avoid contact with skin, eyes, and clothing. Do not contaminate feed or food. **Environmental Hazard:** This product is toxic to fish, shrimp, crabs and other wildlife. Keep out of any body of water. Do not apply where runoff is likely to occur or when weather conditions favor drift from areas treated. Do not contaminate any body of water by direct application or by cleaning of equipment or disposal of waste. This product is highly toxic to bees exposed to direct treatment or residue. Do not apply this product while bees are actively visiting treatment area. Protective information may be obtained from Cooperative Agricultural Extension Service. **Physical Hazard:** Do not use or store near heat or open flame.

DIRECTIONS FOR USE: It is a violation of Federal law to use this product in a manner inconsistent with this label.

STORAGE AND DISPOSAL: Store this product in its closed, original container in a safe place away from children and domestic animals. Do not reuse empty container. For disposal, securely wrap original container in several layers of newspaper and discard in trash.

DIRECTIONS: Add 2 tablespoons (1 oz.) per gallon of water or 1 1/2 teaspoons per quart. Apply spray thoroughly to both upper and lower plant surfaces as soon as insects appear. Start spraying fruit trees at petal fall. Repeat as needed at 7 to 14 day intervals. For scale insects, use double strength. Do not spray food crops within the number of days of harvest shown in parentheses for each crop listed.

FLOWERS ORNAMENTALS TREES: Roses, azaleas, begonias, camellias, chrysanthemums, dahlias, gladioli, zinnias, evergreens, shade trees. **CONTROLS:** Aphids, tent caterpillars, Japanese beetle, gypsy moth, red spider mites, leafhoppers, leaf miners, lacebugs, mealybugs, thrips, tarnished plant bug, whitefly, bagworms, scale insects (crawlers). May cause injury to ferns, maidenhair, plenis and crassula. **FLIES MOSQUITOES—**Outdoors only. Also ants, clover mites, crickets, earwigs, roaches, and spiders around the home and in refuse piles. Use 6 tablespoons (3 oz.) in enough water to make 1 quart, or 1 quart in 2 gallons and 3 quarts water. Spray thoroughly surfaces on which insects alight. Repeat as needed.

VEGETABLES: Tomatoes (7), beans (3), cabbage (7), cauliflower (7), carrots (14), egg plant (7), peas (7), lettuce (14), peppers (7), potatoes (7), cucumbers (7), melons (7), squash (7), spinach (14).

CONTROLS: Aphids, bean leaf beetle, blister beetle, imported cabbage worm, Colorado potato beetle, fall armyworm, flea beetles, Japanese beetle, cucumber beetle, leafhopper, Mexican bean beetle, tomato fruitworm, webworms, spider mites, lacebug, thrips.

FRUITS: Apples (7), apricots (21), blueberries (14), blackberries (14), cherries (7), grapes (14), peaches (21), pears (7), plums (7), gooseberries (14), cranberries (14), raspberries (14), strawberries (14). May injure McIntosh and Cortland apples if applied within four weeks of harvest.

CONTROLS: Aphids, budmoth, cherry fruitfly, cherry fruitworm, codling moth, grape berry moth, grape leaf skeletonizer, Japanese beetle, Oriental fruit moth, red spider, plum curculio, spittlebug, strawberry weevil, San Jose scale (crawlers), leafhoppers, pear psylla.

IMPORTANT RESTRICTIONS—Observe carefully. Do not spray food crops within the number of days of harvest shown in parentheses for each crop listed. Edible foods should be washed, wiped, or brushed at harvest to remove possible residues. Do not apply to cucurbits unless plants are dry.

LIMITED WARRANTY: BUYER ASSUMES ALL RISKS OF USE, STORAGE AND HANDLING OF THIS MATERIAL NOT IN STRICT ACCORDANCE WITH DIRECTIONS GIVEN HEREWITH.