

MULTI-PURPOSE SPRAY

CONTROLS MANY DISEASES AND INSECTS AFFECTING
BERRIES • FRUITS • FLOWERS • ORNAMENTAL PLANTS

Active Ingredients:	BY WEIGHT
Methoxychlor Technical*.....	19.75%
Malathion**.....	7.50%
Captan***.....	14.67%
Related Derivatives.....	0.33%
INERT INGREDIENTS:.....	57.75%
Total.....	100.00%

*Equivalent to 17.40 2,2Bis (p-methoxyphenyl)-1, 1,1-trichloroethane 17.40%
and related compounds 2.35%

**O,O-dimethyl phosphorodithioate of diethyl mercaptosuccinate

***N-Trichloromethylthio-4-cyclohexene-1,2-dicarboximide

EPA Reg. No. 2125-14

EPA Est. No. 6720-FL-1

KEEP OUT OF REACH OF CHILDREN

DANGER

PELIGRO

PRECAUCION AL USUARIO: Si usted no lee ingles, no use este producto hasta que la etiqueta haya sido explicado ampliamente.

STATEMENT OF PRACTICAL TREATMENT

IF IN EYES: Flush with plenty of water. Call a physician.

IF SWALLOWED: Drink promptly a large quantity of milk, egg whites, gelatin solutions, or if these are not available drink large quantities of water. Avoid alcohol.

NOTE TO PHYSICIAN: Probable mucosal damage may contraindicate the use of gastric lavage.

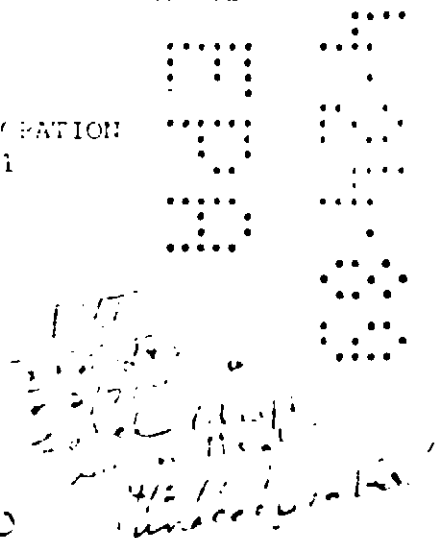
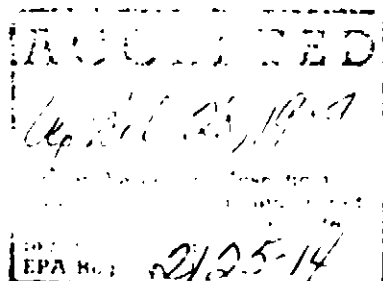
IF INHALED: Remove victim to fresh air. If not breathing give artificial respiration, preferably mouth-to-mouth. Get medical attention.

IF ON SKIN: Remove contaminated clothing. Wash affected area with soap and water. Launder clothing before reusing.

SEE BACK PANEL FOR ADDITIONAL PRECAUTIONARY STATEMENTS

Manufactured For
Science Products Division
MILLER CHEMICAL & FERTILIZER CORPORATION
Hanover, Pennsylvania 17331

NET WEIGHT: 1 POUND



PRECAUTIONARY STATEMENTS

HAZARDS TO HUMANS AND DOMESTIC ANIMALS: DANGER--Causes irreversible eye damage. Harmful if swallowed or inhaled. May cause allergic skin reactions. Do not get in eyes. Avoid contact with skin and clothing. Keep children and pets out of treated areas until spray has dried or dust has settled. Do not contaminate food or feed. Wash hands thoroughly after handling. Food utensils, such as tablespoons, should not be used for food after use with pesticides.

ENVIRONMENTAL HAZARDS

This pesticide is toxic to fish, aquatic invertebrates, and aquatic life stages of amphibians. Do not apply directly to water or wetlands (i.e., swamps, bogs, marshes, and potholes). Drift and runoff may be hazardous to aquatic organisms in areas near the application site. Do not clean equipment or dispose of equipment washwaters in a manner that will contaminate water resources.

This product is highly toxic to bees exposed to direct treatment on blooming crops or weeds. Do not apply this product or allow it to drift to blooming crops or weeds if bees are visiting the treatment area.

PHYSICAL OR CHEMICAL HAZARDS

Do not use or store near heat or open flame.

HIGHLY EFFECTIVE: The Methoxychlor-Malathion-Captan combination is a highly effective, one-formula control for many common diseases, pests of certain fruits, berries, flowers, and ornamentals.

DIRECTIONS FOR USE

It is a violation of Federal Law to use this product in a manner inconsistent with its labeling.

Wear goggles or face shield when handling. Remove contaminated clothing and separately launder clothing before reuse.

Wear chemical resistant gloves when using indoors or outdoors. When using wear long pants and long-sleeved shirt and apply with the wind to you back. Wash non-disposable gloves thoroughly with soap and water before removing.

STORAGE & DISPOSAL

Do not contaminate water, food, or feed by storage or disposal. Store in tightly closed original container in a locked area away from children and domestic animals. Do not reuse empty container. Securely wrap closed container in several layers of newspaper and discard in trash.

DIRECTIONS

MIXING: SCIENCE MULTI-PURPOSE SPRAY is a wettable powder. Mix thoroughly with water as follows: 4 tablespoons (1 oz.) in 1 gallon; 8 oz. in 8 gallons; 1 lb. in 16 gallons.

SPRAYING: Start applications before insects become numerous and before disease symptoms appear. Repeat applications as needed to maintain effective control, usually at 7 to 14 day intervals, except as noted. Spray all exposed surfaces of plant thoroughly. Keep mixture agitated while spraying to maintain effective dispersion of particles.

FRUIT AND BERRIES: Do not use within 14 days of an oil spray. Consult your State Agricultural Experiment Station or State Extension Service for exact timing. For tree spraying, apply spray mix as follows: small or dwarf trees, (6 to 8 ft.) use 1 to 3 pints, medium size trees (8 to 12 ft.) use 3 to 8 pints and large trees (12 ft. or taller) use 1 to 3 gallons.

APPLES: Make first application when leaves begin to appear. Repeat at 7 to 14 day intervals up to within 7 days of harvest, except during bloom. Controls Aphids, Bud Moth, Codling Moth, Forbes Scale, Japanese Beetles, Plum Curculio, Red-banded Leafroller, Red Spider Mites; also Apple Scab, Bitter Rot, Black Rot, Brooks Spot.

PEACHES: Make first application when buds begin to show pink. Apply again when petals fall. Repeat at 7 to 10 day intervals until 21 days before harvest. Controls Aphids, European Red Mites, Oriental Fruit Moth, Plum Curculio, Red Spider Mites; also Brown Rot and Peach Scab.

CHERRIES, PLUMS: Apply as for PEACHES above. Controls Aphids, Cherry Maggot, Cherry Fruit-fly, Fruit-tree Leafroller. Also controls Brown Rot, Leaf Spot on cherries. Applications may be made up until 7 days before harvest.

STRAWBERRIES, GRAPES: Make first application in pre-bloom stage, before infestation first appears. Repeat as needed, usually at 10 to 14 day intervals, more frequently if needed. Apply 1 quart spray mix per 100 sq. ft. to strawberries. Apply 1 quart of spray mix per 64 sq. ft. of grapevine. For example, 1 quart of spray mix should be used on 8 running feet of grapevines, four foot in height or apply 1 pint of spray mix on one side of the row and 1 pint on the other side. Do not apply to strawberries or grapes within 14 days of harvest. Controls Aphids, Grape Berry Moth, Flea Beetles, Japanese Beetles, Leafhoppers, Mealybugs, Spider Mites, Spittlebugs, Strawberry Weevil, Strawberry Leafroller, also Botrytis Fruit Rot.

NOTE: Remove residues remaining at harvest from edible portions of fruits by thoroughly washing, wiping, brushing or other effective means.

FLOWERS, SHRUBS, SHADE TREES: Control Aphids, Bagworms, Birch Leaf Miner, Boxwood Leaf Miner, Lace Bugs, Leafhoppers, Rose Chafers, Tarnished Plant Bugs, Tent Caterpillars, Thrips, Red Spider Mites. For control of Black Spot on Roses, apply often enough to maintain coverage of new growth.

LIMITED WARRANTY: Seller makes no warranty or guarantee of any kind, express or implied, concerning effects of use of this product, other than those specified on this label. Buyer, or User, accepts all responsibility for results due to misuse of this product.