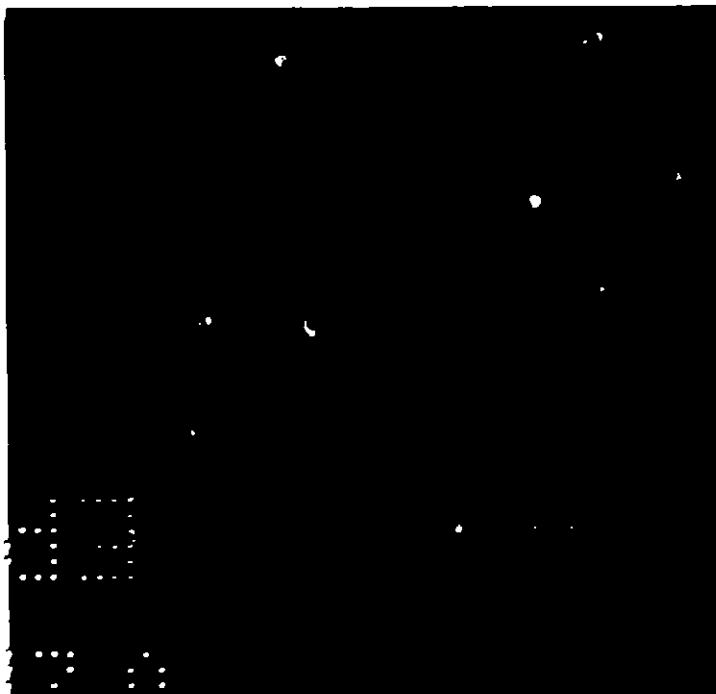


RED ARROW[®] INSECT SPRAY

A BOTANICAL INSECTICIDE CONCENTRATE
CONTAINING PYRETHRUM AND ROTENONE



PRECAUTIONARY STATEMENTS: HAZARDS TO HUMANS AND DOMESTIC ANIMALS—WARNING: Harmful if swallowed, inhaled, or absorbed through the skin. Avoid contact with eyes, skin and clothing. Avoid breathing vapors—spray. Wash thoroughly after handling. Wash hands, face and arms with soap and water before eating and smoking. Wear gloves and long-sleeved work clothing. Change to clean clothing daily. Wash all clothing with soap and water before reuse. Keep children and pets out of treated area until spray dries. Do not contaminate food or feed. Food utensils such as teaspoons or tablespoons should not be used for food purposes after use in measuring this product. **ENVIRONMENTAL HAZARDS:** This product is toxic to fish. Do not apply directly to water or wetlands. Do not contaminate water by cleaning of equipment or disposal of wastes. Do not apply when weather conditions favor drift from area treated. Apply this product only as specified on this label. **PHYSICAL OR CHEMICAL HAZARDS:** Do not use or store near heat or open flame. Keep container closed and store in a cool place.

DIRECTIONS FOR USE: It is a violation of Federal law to use this product in a manner inconsistent with its labeling.

STORAGE & DISPOSAL

Do not contaminate water, food or feed by storage or disposal. **STORAGE:** Store in tightly closed, original container in a locked area away from children and domestic animals. **FOR DISPOSAL:** Securely wrap original container in several layers of newspaper and discard in trash. Do not reuse empty container.

AGITATE WHILE USING: FOLIAR SPRAY: Mix 1 tablespoonful (½ fl. oz.) of RED ARROW INSECT SPRAY in each gallon of water for a general insect spray on FLOWERS, FRUITS, VEGETABLES, SHADE TREES, and ORNAMENTALS around Homes, Estates, Parks and Institutions. When insects appear, direct spray to hit as many as possible and to thoroughly cover all plant surfaces, particularly the undersides of leaves. Repeat at weekly intervals or as necessary. Application may be made on FRUITS and VEGETABLES up to within one day of harvest.

LIST OF INSECTS CONTROLLED

Aphids, Leafhoppers, exposed Thrips, adult Japanese Beetle, and Mites such as European Red Mite, Two spotted Spider Mites, and Clover Mite on FRUITS*, FLOWERS, VEGETABLES**, SHADE TREES and ORNAMENTALS. Mealy Bugs and Whitefly on potted and greenhouse plants. Rose Chafer, Midge, and Slug on Roses. Mexican Bean Beetles and Bean Leaf Beetles on Beans. Flea Beetle on Tomatoes. Cankerworm and Lace Bug on Ornamentals.

*To be used on the following FRUITS: Apples, Blackberries, Currants, Cherries, Peaches, Pears, Grapes.

**To be used for pre-harvest spray on the following VEGETABLES: Asparagus, Cucumbers, Squash, Beets, Turnips, Celery, Tomatoes, Beans, Carrots.

Do not apply in excess of one gallon of RED ARROW INSECT SPRAY per acre on FRUITS AND VEGETABLES.

PATIO SPRAY: To reduce the annoyance of Mosquitoes and Gnats on PATIOS around the home grounds, and in other recreational areas, apply a solution of six tablespoonful (3 fl. oz.) of RED ARROW INSECT SPRAY in each gallon of water. Use a fine mist to penetrate hiding and resting places such as grass, shrubs and ornamentals. Treat as large an area as possible surrounding the patio or grounds to be kept mosquito and gnat free. Repeat application as necessary. Apply at the rate of two pints of RED ARROW INSECT SPRAY per acre.

LIMITED WARRANTY: BUYER ASSUMES ALL RISKS OF USE, STORAGE AND HANDLING OF THIS MATERIAL NOT IN STRICT ACCORDANCE WITH DIRECTIONS GIVEN HEREWITH.

58M3 6MP

Batch No 158149

Prod No 12717

COPYRIGHT - 1983 - MILLER CHEMICAL & FERTILIZER CORPORATION

