

PM-10

Reg # 6718-20

192

(FRONT PANEL)

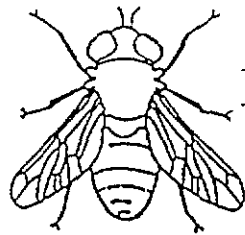
ER
 RECEIVED
 FEB 26 1997
 Under the Federal Insecticide,
 Fungicide, and Rodenticide Act
 No. 6718-20

Quick-Killing
Amway®

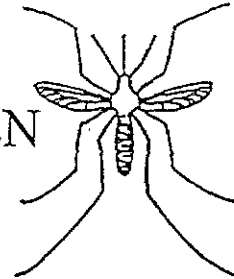
BUG SPRAY

96 SEP 25 A9:04

RECD LHA/APP/DPDI



FOR
HOUSE & GARDEN
INSECTS



Kills houseflies, mosquitoes, gnats, wasps, roaches, earwigs,
two-spotted mites, sowbugs, spiders, ants, biting flies, aphids
(plant lice), leafhoppers, exposed thrips, adult whiteflies.

ACTIVE INGREDIENTS:

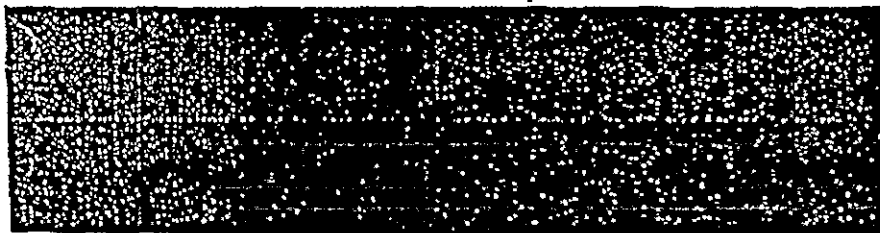
- *Resmethrin [5-(phenylmethyl)-3-furanyl]
methyl 2,2-dimethyl-3-(2-methyl-1-propenyl)
cyclopropanecarboxylate0.200%w/w
- d-trans Allethrin0.125%w/w
- INERT INGREDIENTS:.....99.675%w/w
100.000%w/w

6195

*Cis/trans Isomers ratio: max. 30% (±) cis and min. 70% (±) trans.
U.S. Patent No. 3,465,007

E.P.A. Reg. No. 6718-20 E.P.A. Est. No. 7056-TX-1

MADE IN U.S.A.



KEEP OUT OF REACH OF CHILDREN

CAUTION

HARMFUL IF SWALLOWED;
CONTENTS UNDER PRESSURE

Read carefully other precautions on side panel.

NET WT. 16 OZ. (1 LB.) 454g

(side panel)

DIRECTIONS FOR USE

It is a violation to use this product in a manner inconsistent with its labeling.

Shake well before each use. Remove protective cap. Aim spray opening away from person. Push button to spray.

NOTICE: When used in bakeries, restaurants and food processing establishments, foods should be removed or covered before treatment. All food processing surfaces should be covered before treatment or thoroughly cleaned with an effective cleaning compound and rinsed with potable water before using. When using this product in these areas, apply only when the facility is not in operation.

INDOORS-TO CONTROL HOUSEHOLD PESTS: For Houseflies, Mosquitoes, and Gnats: Close all doors and windows. Point nozzle upward. Direct the spray mist to all parts of the room, especially windows and other light sources which attract these insects. Fill the room with mist, then leave the treated area. Keep the room closed for at least 15 minutes. Ventilate the room when treatment is completed.

For Crawling Insects: Roaches, earwigs, sowbugs, spiders. Spray thoroughly into hiding places such as cracks, crevices, moist areas, opening around pipes and sinks, under refrigerators, baseboards, and storage areas. Spray on ants where possible. Repeat as necessary.

NUISANCE PESTS-ON OR ENTERING BUILDINGS:

Wasps: Applications should be made in late evening when insects are at rest. Spray liberally into hiding and breeding places, contacting as many insects as possible. Repeat as necessary. Spray directly on stray wasps that enter buildings. Spiders: Direct short burst of spray on spiders and repeat as necessary. Earwigs: Spray directly on earwigs in crevices and other hiding places on outdoor porches, patio floor and doorway entrances.

OUTDOORS-TO REDUCE ANNOYANCE FROM FLYING INSECTS: Reduce mosquitoes, gnats (midges), houseflies, biting flies and pyralid and noctuid flying moths by spraying their resting areas. Follow precautions on side panel. Hold container 18 to 24 inches from shrubs, bushes and grassy areas. Spray these areas with a slow sweeping motion at a rate of from 1 to 3 seconds per cubic yard of space while moving away from the treated area. Repeat as necessary.

TO PROTECT ORNAMENTAL PLANTS: To control aphids, exposed thrips, adult whiteflies, leafhoppers, two spotted mites, on smaller rhododendrons, pines, spruce, hemlock, spirea, dogwood, palm, mimosa, toyon, viburnum, euonymus, oaks, maples, locust, forsythia and althea; and mimosa webworm larvae on mimosa, spray directly on insects. Hold container 18 inches from the infested plants. Spray in short spray burst of one to three seconds or spray at the rate of one linear foot of growth per second. Direct spray to all sides covering foliage until slightly moist. Avoid heavy wetting. Repeat as necessary to obtain control.

Spray peonies, iris, zinnia, snapdragons, ageratums, chrysanthemums, nasturtiums daisies, geraniums, marigolds, daphne, fatshedera, ivy, tobira, queen sago and broad leaf acacia for control of aphids, exposed thrips, adult whiteflies, leafhoppers. Spray as directed above.