

OUTDOORS — TO REDUCE ANNOYANCE FROM FLYING INSECTS: Reduce mosquitoes, gnats (midges), houseflies, biting flies and pyralid and noctuid flying moths by spraying their resting areas. Follow precautions on right panel. Hold container 18 to 24 inches from shrubs, bushes and grassy areas. Spray these areas with a slow sweeping motion at the rate of from 1 to 3 seconds per cubic yard of space while moving away from the treated areas. To reduce annoyance from these flying insects, treat open porches and patios in a similar manner. Spray only when the air is still. Allow spray to dissipate before occupying the treated area. Repeat as necessary.

TO PROTECT ORNAMENTAL PLANTS: To control aphids, exposed thrips, adult whiteflies, leafhoppers, two spotted mites, on smaller rhododendrons, pines, spruce, hemlock, spirea, dogwood, palm, mimosa, toyon, viburnum, euonymus, oaks, maples, locust, forsythia and althea; and mimosa webworm larvae on mimosa, spray directly on insects. Hold container 18 inches from the infested plants. Spray in short spray bursts of one to three seconds or spray at the rate of one linear foot of growth per second. Direct spray to all sides covering foliage until slightly moist. Avoid heavy wetting. Repeat as necessary to obtain control.

Spray peonies, iris, zinnia, snapdragons, ageratum, chrysanthemums, nasturtiums, daisies, geraniums, marigolds, daphne, fatsheeda, ivy, tobira, queen sago and broad leaf acacia for control of aphids, exposed thrips, adult whiteflies, leafhoppers. Spray as directed above.

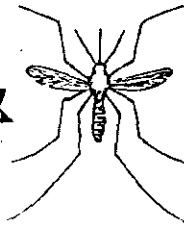
USE WITH CAUTION on azaleas, junipers, roses, including hybrid tea roses, flowering quince, ash and camellias. These plants may be subject to leaf or flower burn under certain conditions of use.

For adult whiteflies, two-spotted mites and mealybugs be sure to direct spray to contact these pests. Thoroughly cover the infested area. Use several repeat applications at two day intervals if necessary.

TO PROTECT HOUSE PLANTS: Spray infested African violets, philodendron, geraniums, begonias, coleus for listed pests. Leave the sprayed area when done indoors, and ventilate area after treatment is completed.

NUISANCE PESTS — ON OR ENTERING BUILDINGS: Wasps: Applications should be made in late evening when insects are at rest. Spray liberally into hiding and breeding places, contacting as many insects as possible. Repeat as necessary. Spray directly on stray wasps that enter buildings. Spiders: Direct short burst of spray on spiders and repeat as necessary. Earwigs: Spray directly on earwigs in crevices and other hiding places on outdoor porches, patio floor and doorway entrances.

Quick-Killing
BUG SPRAY
for
house & garden



ACTIVE INGREDIENTS:

*[(5-Benzyl-3-furyl)methyl 2,2-dimethyl-3-(2-methylpropenyl)cyclopropanecarboxylate	0.200%	w/w
Related compounds	0.027%	
d-trans Allethrin (allyl homolog of Cinerin I)	0.125%	
Related compounds	0.009%	
Aromatic petroleum hydrocarbons	0.265%	
INERT INGREDIENTS:	99.374%	
	100.000%	

*Cis/trans isomers ratio: max. 30% (±) cis and min. 70% (±) trans.

U.S. Patent No. 3,465,007

EPA Reg. No. 6718-20



CAUTION
KEEP OUT OF REACH OF CHILDREN
HARMFUL IF SWALLOWED
CONTENTS UNDER PRESSURE
Read carefully other cautions on side panel.

NET WT 16 OZ (1 LB)

Amway

**Quick-Killing
BUG SPRAY**

Kills houseflies, mosquitoes, gnats, wasps, roaches, earwigs, two-spotted mites, sowbugs, spiders, ants, biting flies, aphids (plant lice), leafhoppers, exposed thrips, adult whiteflies.

DIRECTIONS

Shake well before each use. Remove protective cap. Aim spray opening away from person. Push button to spray.

INDOORS — TO CONTROL HOUSEHOLD PESTS: For Houseflies, Mosquitoes, and Gnats: Close all doors and windows. Point nozzle upward. Direct the spray mist to all parts of the room, especially windows and other light sources which attract these insects. Fill the room with mist, then leave the treated area. Keep the room closed for at least 15 minutes. Ventilate the room when treatment is completed.

For Crawling Insects: Roaches, earwigs, sowbugs, spiders. Spray thoroughly into hiding places such as cracks, crevices, moist areas, opening around pipes and sinks, under refrigerators, baseboards, and storage areas. Spray directly on insects where possible.

Ants: Spray trails, nests and points of entry. Spray on ants where possible. Repeat as necessary.

CAUTION

Keep out of reach of children. Harmful if swallowed. Avoid contamination of feed and foodstuffs. Remove pets, birds and cover fish aquariums before spraying. Do not use on edible crops.

NOTICE: When used in bakeries, restaurants and food processing establishments, foods should be removed or covered before treatment. All food processing surfaces should be covered before treatment or thoroughly cleaned before using. When using the product in these areas, apply only when the facility is not in operation.

WARNING: Contents under pressure. Do not puncture. Do not use or store near heat or open flame. Exposure to temperatures above 130°F. may cause bursting. Never throw container into fire or incinerator.

Sold only in homes by Amway distributors
SAISFACTION GUARANTEED ... OR YOUR MONEY BACK

Mfg. by Amway Corp.,
Ann, Mich., U.S.A. 49301
© 1973 Amway Corp., Ann, Mich., U.S.A.

RED
PLATE
PMS WARM RED

BROWN
PLATE
PMS 457

BLACK PLAT
6718-20

ACCEPTED
FEB 27 1973
UNDER THE
PUNCH CARD SYSTEM
FOR
EDUCATIONAL INSTITUTIONS
TO AVOID THE NEED FOR
APPROVALS

LABEL APPROVAL

CLAVER 11-2-76

ZYSK _____

COOMBS _____

HUNTER _____

JONES _____

6718-20

2/27/73

15 181